

**Significant Wildlife Observations**

**DOUGAN & ASSOCIATES**  
ECOLOGICAL CONSULTING & DESIGN  
77 Wyndham Street South • Guelph, ON N1E 5R3  
T 519.822.1609 • F 519.822.5389 • www.dougan.ca

**Nunavut ENVIRONMENTAL CONSULTING LTD**

PROJECT: Whale Tail Pit & Haul Road

CLIENT: Agnico Eagle Mines Limited

DATE: NOVEMBER 2015

SCALE: 1:30,000

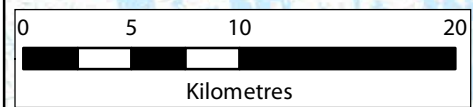
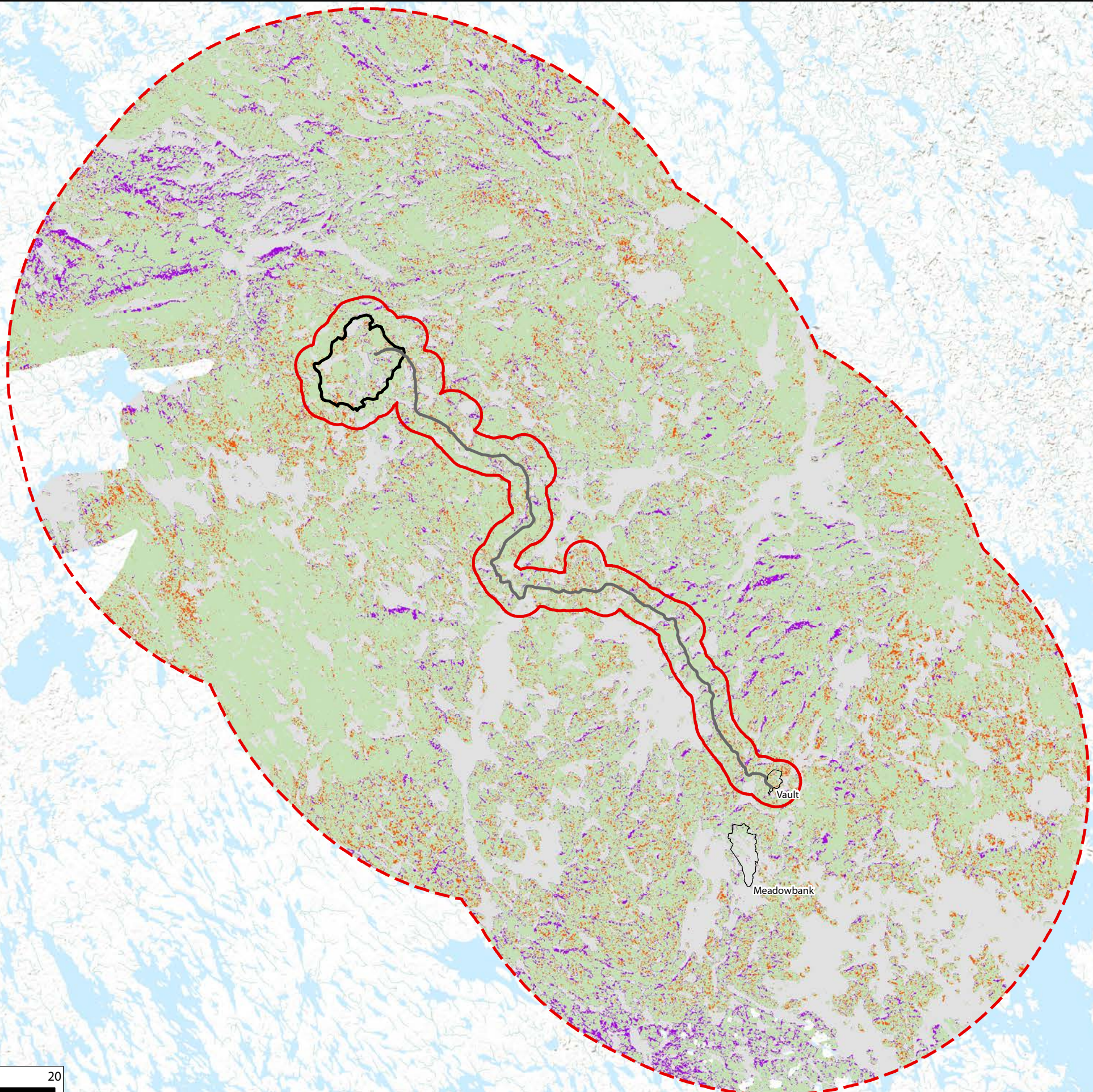
DRAWN BY: LC

CHECKED BY: MAY

Figure: 9.7

The information displayed on this map has been compiled from various sources. While every effort has been made to accurately depict the information, this map should not be relied on as being a precise indicator of locations, features, or roads, nor as a guide to navigation. MNR data provided by Queen's Printer of Ontario. Use of the data in any derivative product does not constitute an endorsement by the MNR or the Ontario Government of such products.





Sources: Esri, HERE, DeLorme, Intermap, increment P Corp., GEBCO, USGS, FAO, NPS, NRCAN, GeoBase, IGN, Kadaster NL, Ordnance Survey, Esri Japan, METI, Esri China (Hong Kong), swisstopo, MapmyIndia, © OpenStreetMap contributors, and the GIS User Community

**Legend**  

Proposed Haul Road  
(AEM, Nov. 2015)

Existing Minesite

Whale Tail Pit Study Area

LSA Boundary

RSA Boundary

**Caribou: Growing Season**  
**Habitat Suitability**  

High

Moderate


Low

Nil

Terrestrial Baseline Characterization Report


**Habitat Suitability**

**Caribou: Growing Season**



DOUGAN  
& ASSOCIATES  
ECOLOGICAL CONSULTING & DESIGN

77 Wyndham Street South • Guelph, ON N1E 5R3  
T 519.822.1609 • F 519.822.5389 • www.dougan.ca



**Nunavut** ENVIRONMENTAL  
CONSULTING LTD

PROJECT: Whale Tail Pit & Haul Road

CLIENT: Agnico Eagle Mines Limited

N

W

S

E

UTM Zone 14 NAD83

DATE: NOVEMBER 2015

SCALE: 1:350,000

DRAWN BY: LC

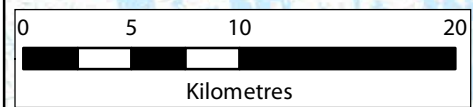
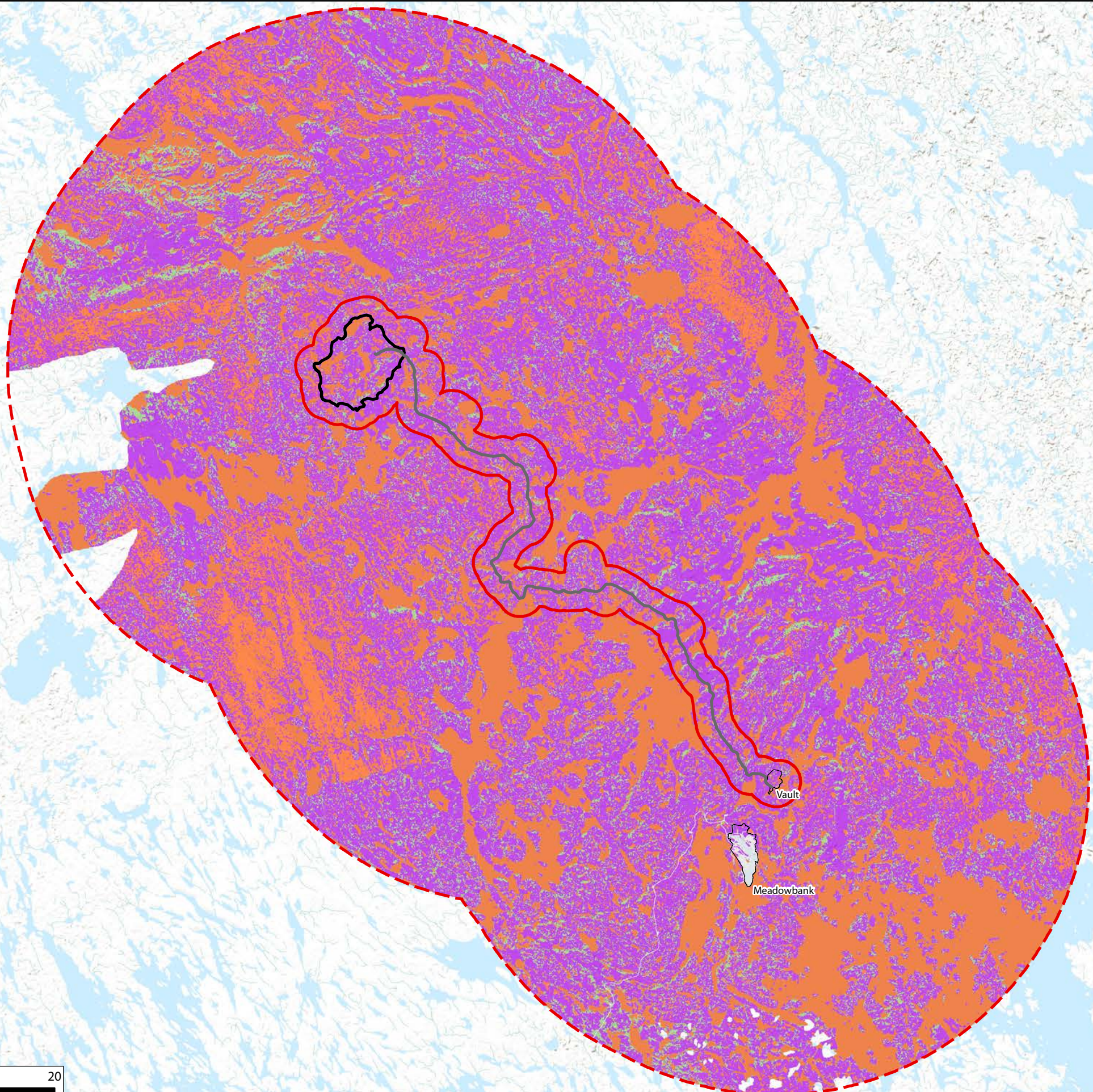
CHECKED BY: MAY

Figure:

10.1

The information displayed on this map has been compiled from various sources. While every effort has been made to accurately depict the information, this map should not be relied on as being a precise indicator of locations, features, or roads, nor as a guide to navigation. MNR data provided by Queen's Printer of Ontario. Use of the data in any derivative product does not constitute an endorsement by the MNR or the Ontario Government of such products.





Sources: Esri, HERE, DeLorme, Intermap, increment P Corp., GEBCO, USGS, FAO, NPS, NRCAN, GeoBase, IGN, Kadaster NL, Ordnance Survey, Esri Japan, METI, Esri China (Hong Kong), swisstopo, MapmyIndia, © OpenStreetMap contributors, and the GIS User Community

**Legend**

- Proposed Haul Road (AEM, Nov. 2015)
- Existing Minesite
- Whale Tail Pit Study Area
- LSA Boundary
- RSA Boundary
- Caribou: Winter Habitat Suitability**
  - High
  - Medium
  - Low
  - Nil

Terrestrial Baseline Characterization Report

**Habitat Suitability**

**Caribou: Winter**

77 Wyndham Street South • Guelph ON N1E 5R3  
T 519.822.1609 • F 519.822.5389 • www.dougan.ca

PROJECT: Whale Tail Pit & Haul Road

CLIENT: Agnico Eagle Mines Limited

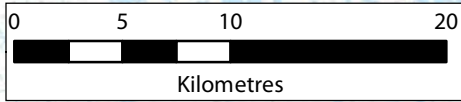
	DATE: NOVEMBER 2015
	SCALE: 1:350,000
	DRAWN BY: LC
	CHECKED BY: MAY

Figure:

10.2

The information displayed on this map has been compiled from various sources. While every effort has been made to accurately depict the information, this map should not be relied on as being a precise indicator of locations, features, or roads, nor as a guide to navigation. MNR data provided by Queen's Printer of Ontario. Use of the data in any derivative product does not constitute an endorsement by the MNR or the Ontario Government of such products.





Sources: Esri, HERE, DeLorme, Intermap, increment P Corp., GEBCO, USGS, FAO, NPS, NRCAN, GeoBase, IGN, Kadaster NL, Ordnance Survey, Esri Japan, METI, Esri China (Hong Kong), swisstopo, MapmyIndia, © OpenStreetMap contributors, and the GIS User Community

**Legend**

- Proposed Haul Road  
(AEM, Nov. 2015)
- Existing Minesite
- Whale Tail Pit Study Area
- LSA Boundary
- RSA Boundary

**Muskox: Growing Season**

**Habitat Suitability**

- High
- Medium
- Low
- Nil

Terrestrial Baseline Characterization Report

**Habitat Suitability  
Muskox: Growing Season**



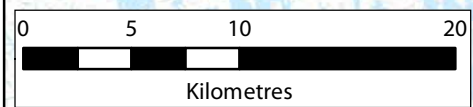
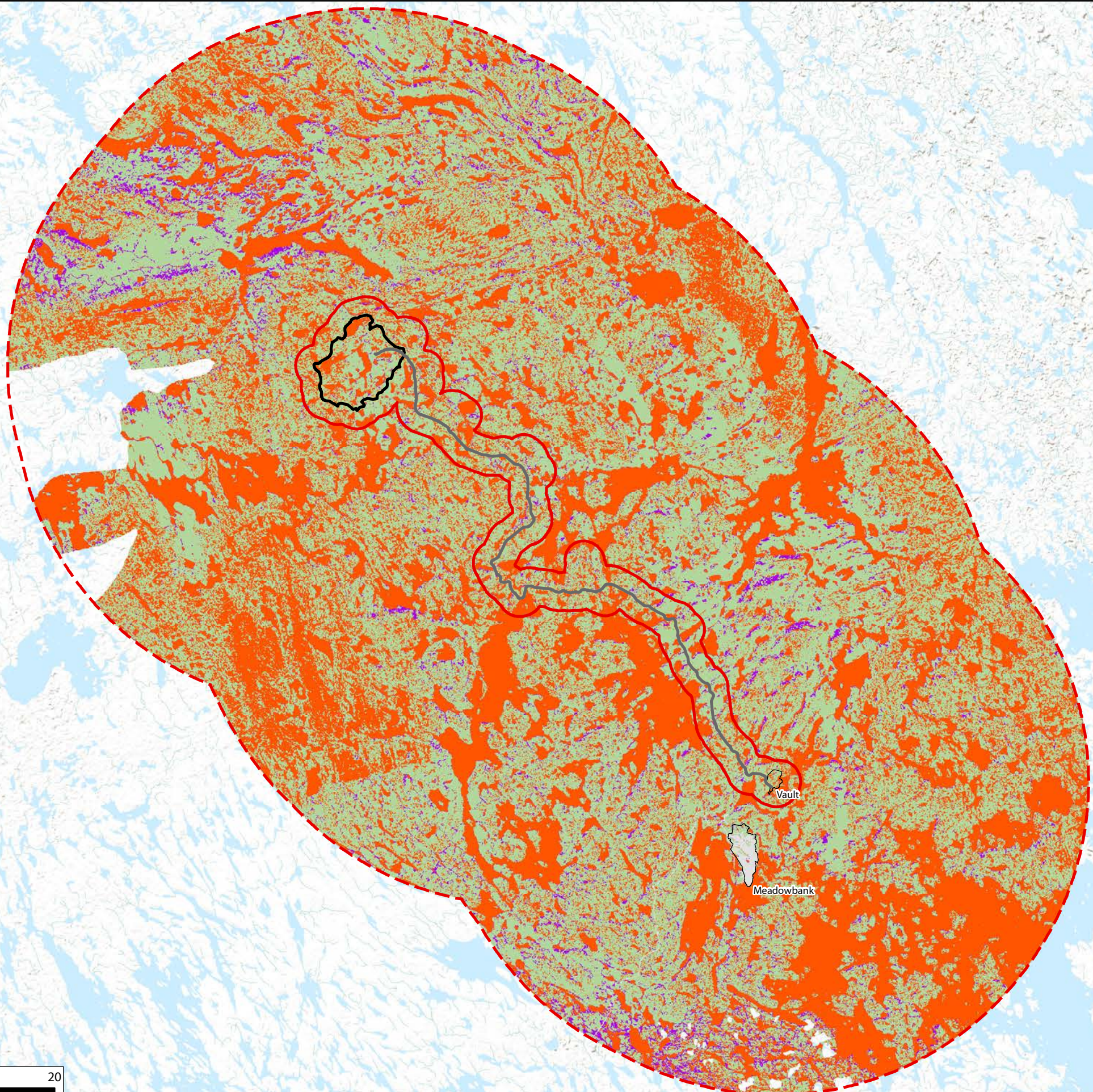
CLIENT: Agnico Eagle Mines Limited

	DATE: NOVEMBER 2015
	SCALE: 1:350,000
	DRAWN BY: LC
	CHECKED BY: MAY

Figure:  
**10.3**

The information displayed on this map has been compiled from various sources. While every effort has been made to accurately depict the information, this map should not be relied on as being a precise indicator of locations, features, or roads, nor as a guide to navigation. MNR data provided by Queen's Printer of Ontario. Use of the data in any derivative product does not constitute an endorsement by the MNR or the Ontario Government of such products.





Sources: Esri, HERE, DeLorme, Intermap, increment P Corp., GEBCO, USGS, FAO, NPS, NRCAN, GeoBase, IGN, Kadaster NL, Ordnance Survey, Esri Japan, METI, Esri China (Hong Kong), swisstopo, MapmyIndia, © OpenStreetMap contributors, and the GIS User Community

**Legend**  

Proposed Haul Road  
(AEM, Nov. 2015)

Existing Minesite

Whale Tail Pit Study Area

LSA Boundary

RSA Boundary

**Muskox: Winter  
Habitat Suitability**

High

Medium

Low

Nil

Terrestrial Baseline Characterization Report

**Habitat Suitability  
Muskox: Winter**

 DOUGAN  
& ASSOCIATES  
ECOLOGICAL CONSULTING & DESIGN  
77 Wyndham Street South • Guelph, ON N1E 5R3  
T 519.822.1609 • F 519.822.5389 • www.dougan.ca

 **Nunavut** ENVIRONMENTAL  
CONSULTING LTD

PROJECT: Whale Tail Pit & Haul Road

CLIENT: Agnico Eagle Mines Limited



DATE: NOVEMBER 2015

SCALE: 1:350,000

DRAWN BY: LC

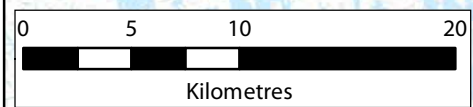
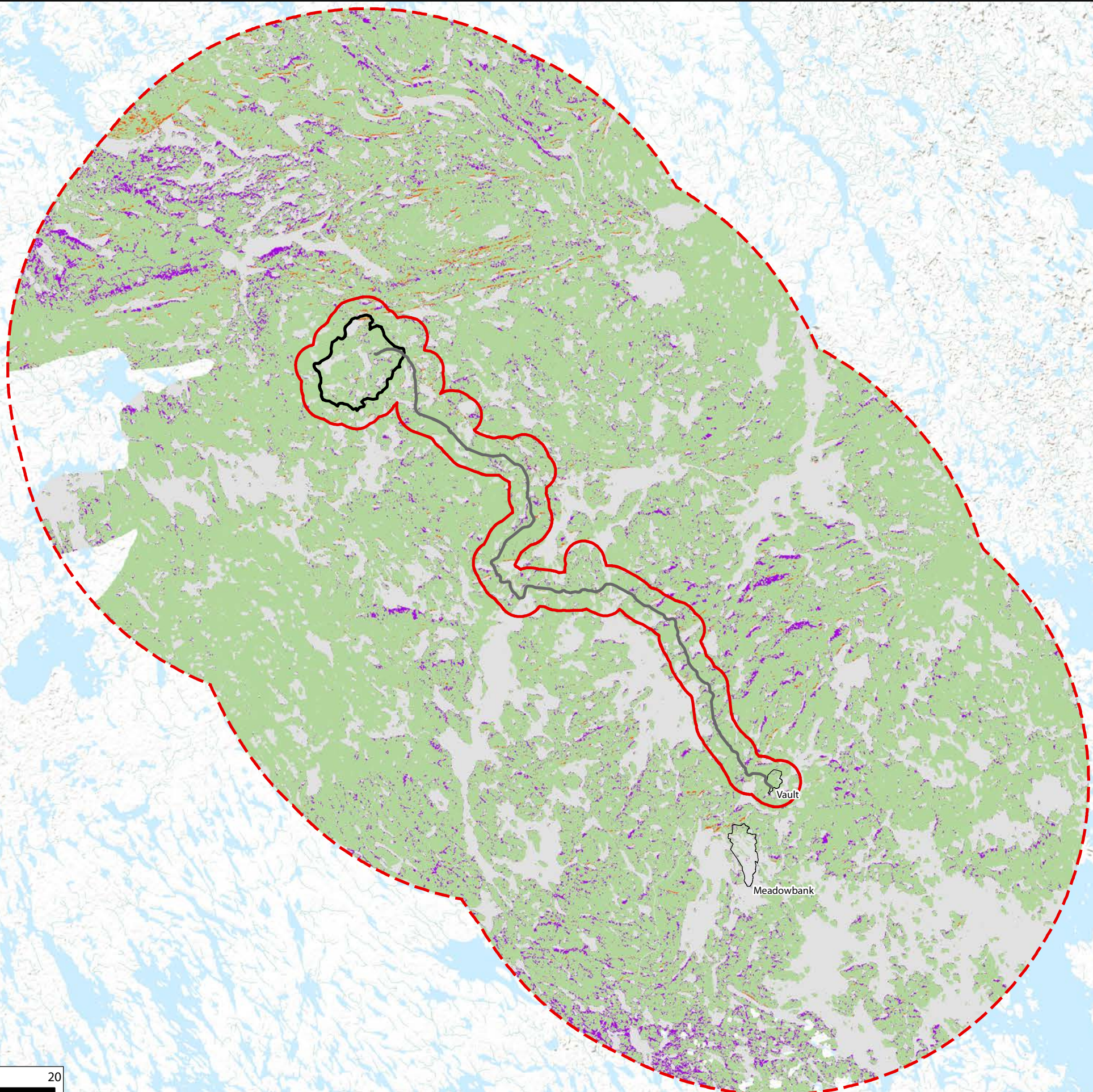
CHECKED BY: MAY

Figure:

10.4

The information displayed on this map has been compiled from various sources. While every effort has been made to accurately depict the information, this map should not be relied on as being a precise indicator of locations, features, or roads, nor as a guide to navigation. MNR data provided by Queen's Printer of Ontario. Use of the data in any derivative product does not constitute an endorsement by the MNR or the Ontario Government of such products.





Sources: Esri, HERE, DeLorme, Intermap, increment P Corp., GEBCO, USGS, FAO, NPS, NRCAN, GeoBase, IGN, Kadaster NL, Ordnance Survey, Esri Japan, METI, Esri China (Hong Kong), swisstopo, MapmyIndia, © OpenStreetMap contributors, and the GIS User Community

**Legend**

- Proposed Haul Road (AEM, Nov. 2015)
- Existing Minesite
- Whale Tail Pit Study Area
- LSA Boundary
- RSA Boundary


**Predatory Mammals: Growing Season Habitat Suitability**

- High
- Medium
- Low
- Nil


Terrestrial Baseline Characterization Report

**Habitat Suitability**

**Predatory Mammals: Growing Season (except denning)**



77 Wyndham Street South • Guelph ON N1E 5R3  
T 519.822.1609 • F 519.822.5389 • www.dougan.ca



**Nunavut ENVIRONMENTAL CONSULTING LTD**

PROJECT: Whale Tail Pit & Haul Road

CLIENT: Agnico Eagle Mines Limited

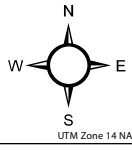
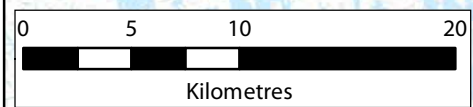
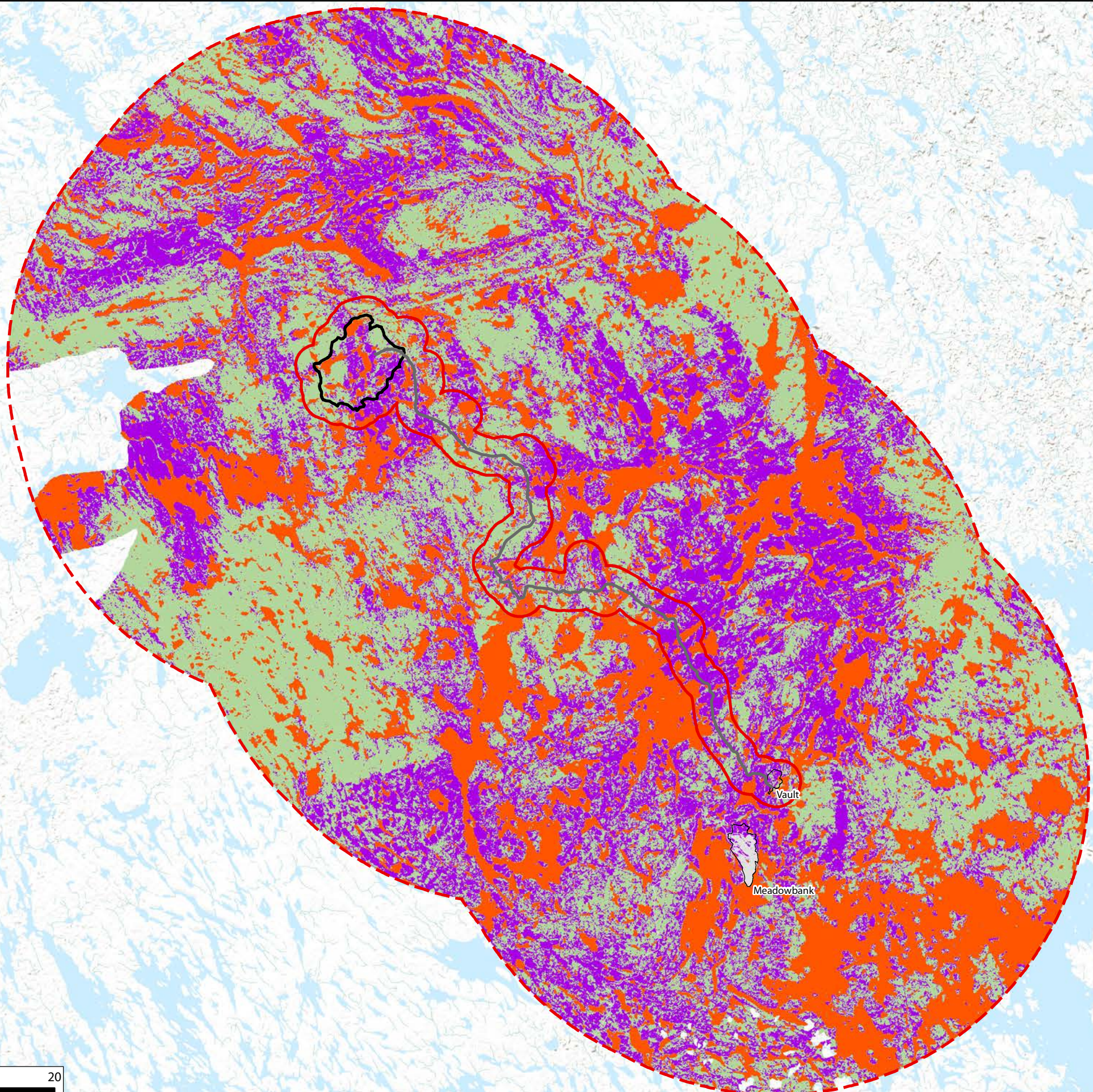
	DATE: NOVEMBER 2015
	SCALE: 1:350,000
	DRAWN BY: LC
	CHECKED BY: MAY

Figure:

10.5

The information displayed on this map has been compiled from various sources. While every effort has been made to accurately depict the information, this map should not be relied on as being a precise indicator of locations, features, or roads, nor as a guide to navigation. MNR data provided by Queen's Printer of Ontario. Use of the data in any derivative product does not constitute an endorsement by the MNR or the Ontario Government of such products.





Sources: Esri, HERE, DeLorme, Intermap, increment P Corp., GEBCO, USGS, FAO, NPS, NRCAN, GeoBase, IGN, Kadaster NL, Ordnance Survey, Esri Japan, METI, Esri China (Hong Kong), swisstopo, MapmyIndia, © OpenStreetMap contributors, and the GIS User Community

**Legend**  

Proposed Haul Road  
(AEM, Nov. 2015)

Existing Minesite

Whale Tail Pit Study Area

LSA Boundary

RSA Boundary

**Predatory Mammals: Winter  
Habitat Suitability**

High

Medium

Low

Nil

Terrestrial Baseline Characterization Report

**Habitat Suitability**  
**Predatory Mammals: Winter**  
**(except denning)**

 DOUGAN  
& ASSOCIATES  
ECOLOGICAL CONSULTING & DESIGN  
77 Wyndham Street South • Guelph, ON N1E 5R3  
T 519.822.1609 • F 519.822.5389 • www.dougan.ca

 **Nunavut** ENVIRONMENTAL  
CONSULTING LTD

PROJECT: Whale Tail Pit & Haul Road

CLIENT: Agnico Eagle Mines Limited



UTM Zone 14 NAD83

DATE: NOVEMBER 2015

SCALE: 1:350,000

DRAWN BY: LC

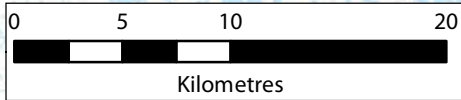
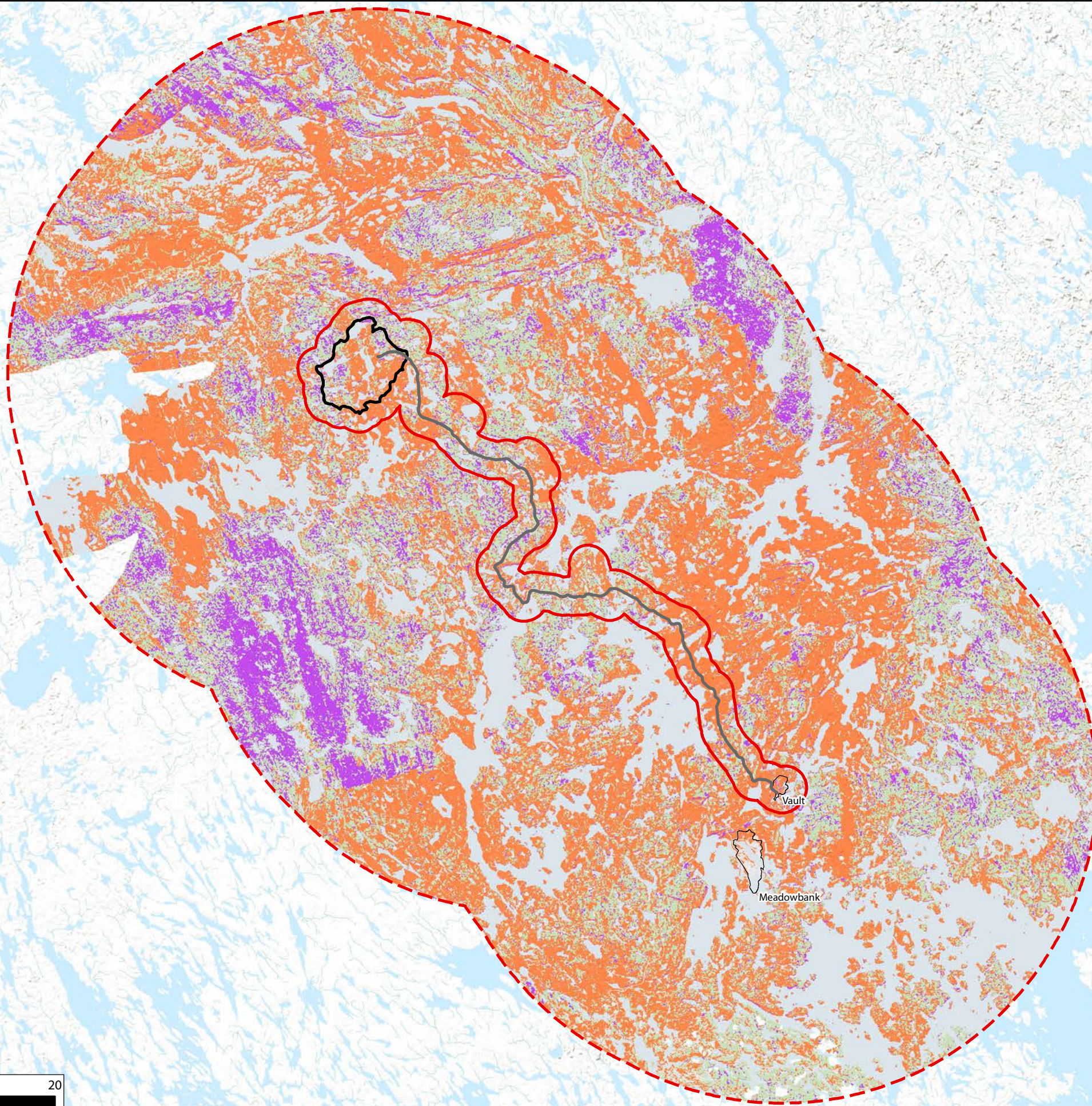
CHECKED BY: MAY

Figure:

10.6

The information displayed on this map has been compiled from various sources. While every effort has been made to accurately depict the information, this map should not be relied on as being a precise indicator of locations, features, or roads, nor as a guide to navigation. MNR data provided by Queen's Printer of Ontario. Use of the data in any derivative product does not constitute an endorsement by the MNR or the Ontario Government of such products.





Sources: Esri, HERE, DeLorme, Intermap, increment P Corp., GEBCO, USGS, FAO, NPS, NRCAN, GeoBase, IGN, Kadaster NL, Ordnance Survey, Esri Japan, METI, Esri China (Hong Kong), swisstopo, MapmyIndia, © OpenStreetMap contributors, and the GIS User Community

**Legend**

Proposed Haul Road  
(AEM, Nov. 2015)

Existing Minesite

Whale Tail Pit Study Area

LSA Boundary

RSA Boundary

**Predatory Mammals: Denning  
Habitat Suitability**

High

Medium

Low

Nil

Terrestrial Baseline Characterization Report  
**Habitat Suitability**  
**Predatory Mammals: Denning**

**DOUGAN  
& ASSOCIATES**  
ECOLOGICAL CONSULTING & DESIGN  
77 Wyndham Street South • Guelph, ON N1E 5R3  
T 519.822.1609 • F 519.822.5389 • www.dougan.ca

**Nunavut** ENVIRONMENTAL  
CONSULTING LTD

PROJECT: Whale Tail Pit & Haul Road

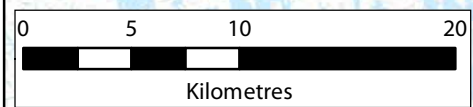
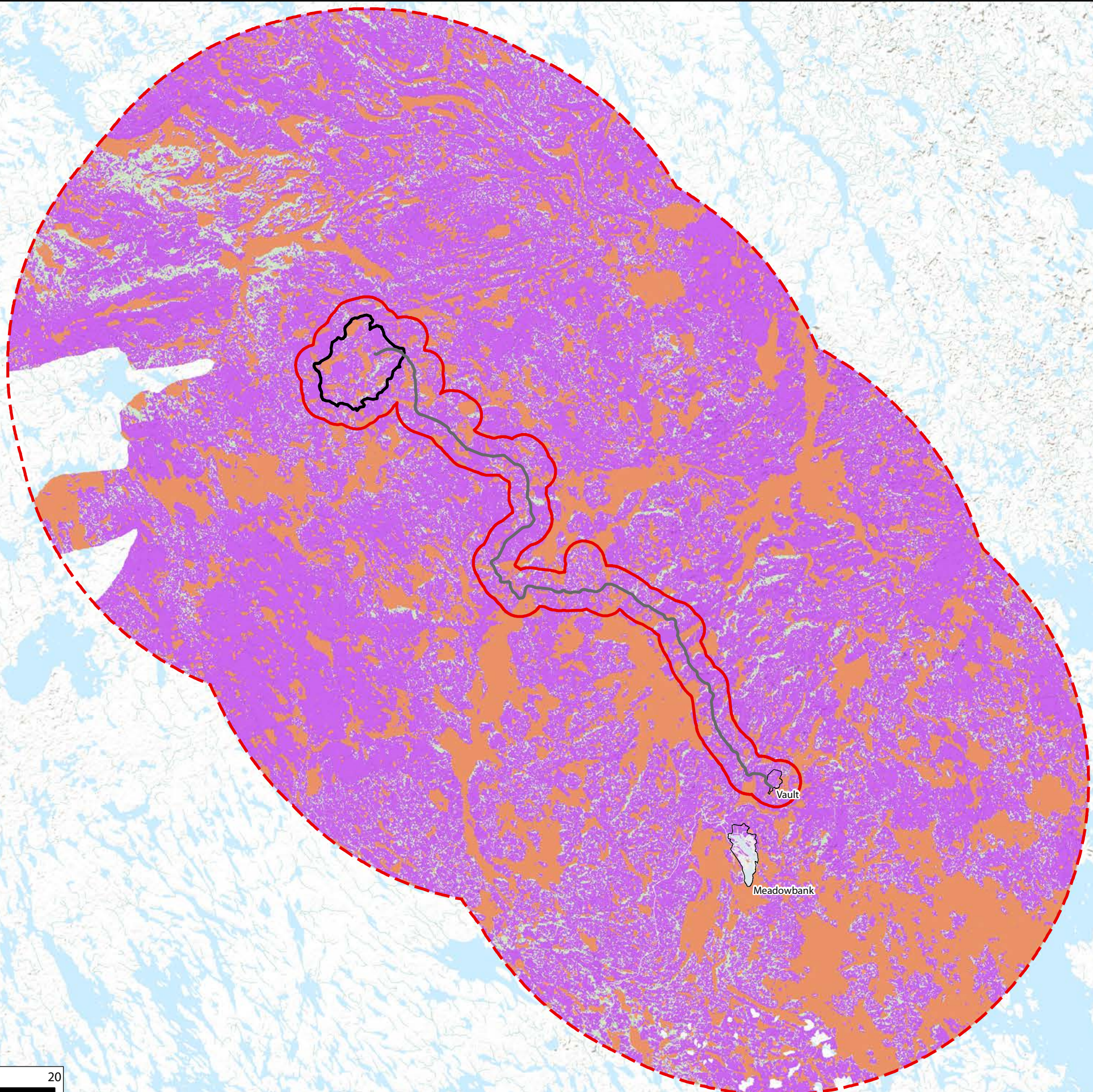
CLIENT: Agnico Eagle Mines Limited

	DATE: NOVEMBER 2015
	SCALE: 1:350,000
	DRAWN BY: LC
	CHECKED BY: MAY

Figure:  
**10.7**

The information displayed on this map has been compiled from various sources. While every effort has been made to accurately depict the information, this map should not be relied on as being a precise indicator of locations, features, or roads, nor as a guide to navigation. MNR data provided by Queen's Printer of Ontario. Use of the data in any derivative product does not constitute an endorsement by the MNR or the Ontario Government of such products.





Sources: Esri, HERE, DeLorme, Intermap, increment P Corp., GEBCO, USGS, FAO, NPS, NRCAN, GeoBase, IGN, Kadaster NL, Ordnance Survey, Esri Japan, METI, Esri China (Hong Kong), swisstopo, MapmyIndia, © OpenStreetMap contributors, and the GIS User Community

## Legend

- Proposed Haul Road  
(AEM, Nov. 2015)
- Existing Minesite
- Whale Tail Pit Study Area
- LSA Boundary
- RSA Boundary
- Small Mammals: Year Round  
Habitat Suitability**
- High
- Medium
- Low
- Nil

Terrestrial Baseline Characterization Report  
**Habitat Suitability**  
**Small Mammals: Year Round**



PROJECT: Whale Tail Pit & Haul Road

CLIENT: Agnico Eagle Mines Limited

	DATE: NOVEMBER 2015
	SCALE: 1:350,000
	DRAWN BY: LC
	CHECKED BY: MAY

Figure:  
**10.8**

The information displayed on this map has been compiled from various sources. While every effort has been made to accurately depict the information, this map should not be relied on as being a precise indicator of locations, features, or roads, nor as a guide to navigation. MNR data provided by Queen's Printer of Ontario. Use of the data in any derivative product does not constitute an endorsement by the MNR or the Ontario Government of such products.