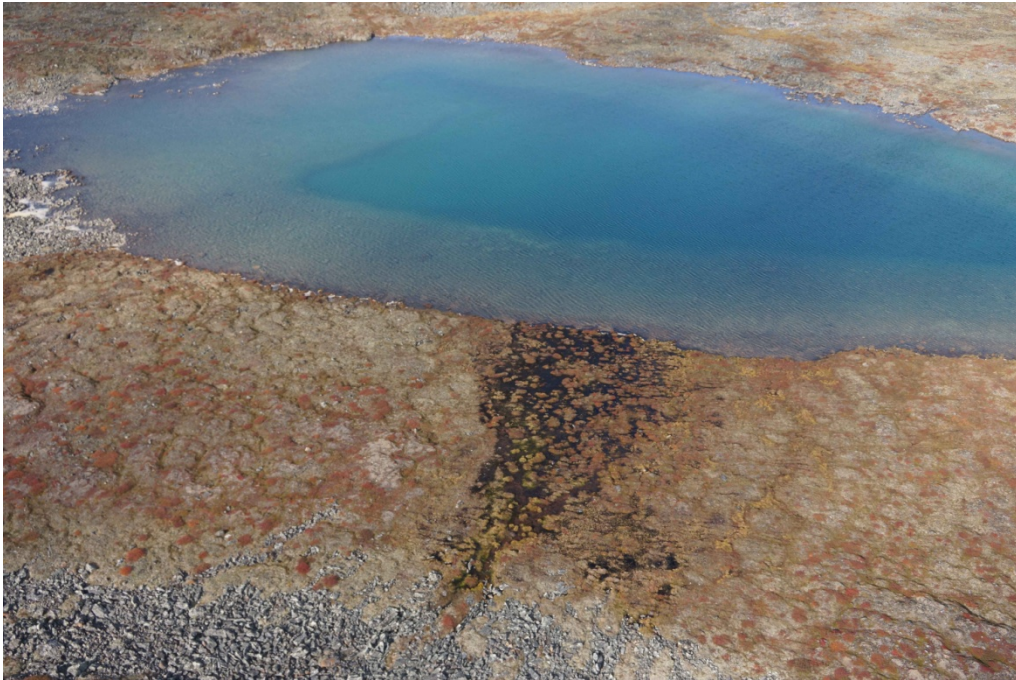


Location 36. Oblique aerial photograph 36-1.

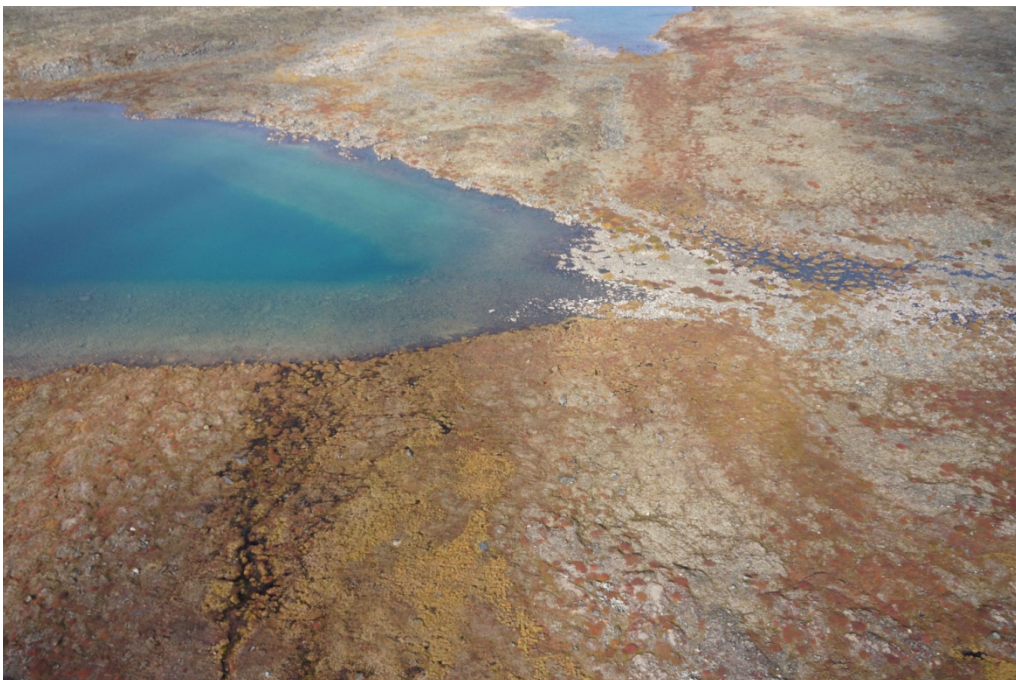


Location 37. Oblique aerial photograph 37-1. One of the three watercourses/seeps included in Location 37.





Location 37. Oblique aerial photograph 37-2. One of the three watercourses/seeps included in Location 37. Location 38 is the nearshore of the lake.

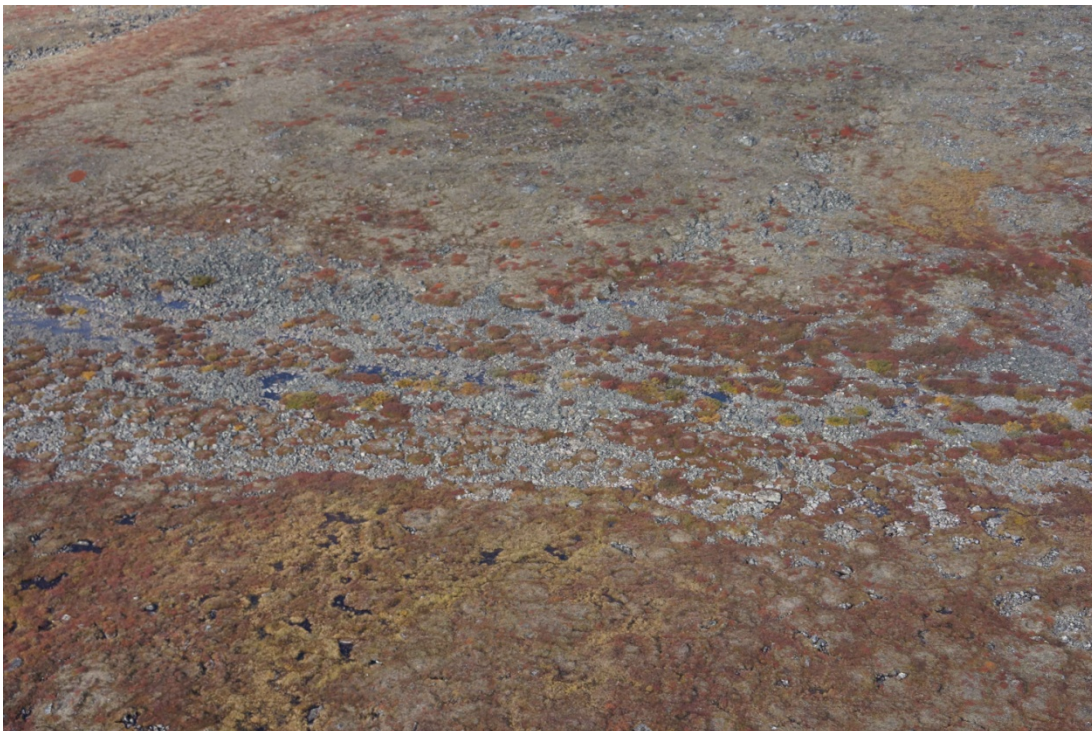


Location 37. Oblique aerial photograph 37-3. One of the three watercourses/seeps included in Location 37. Location 38 is the nearshore of the lake.



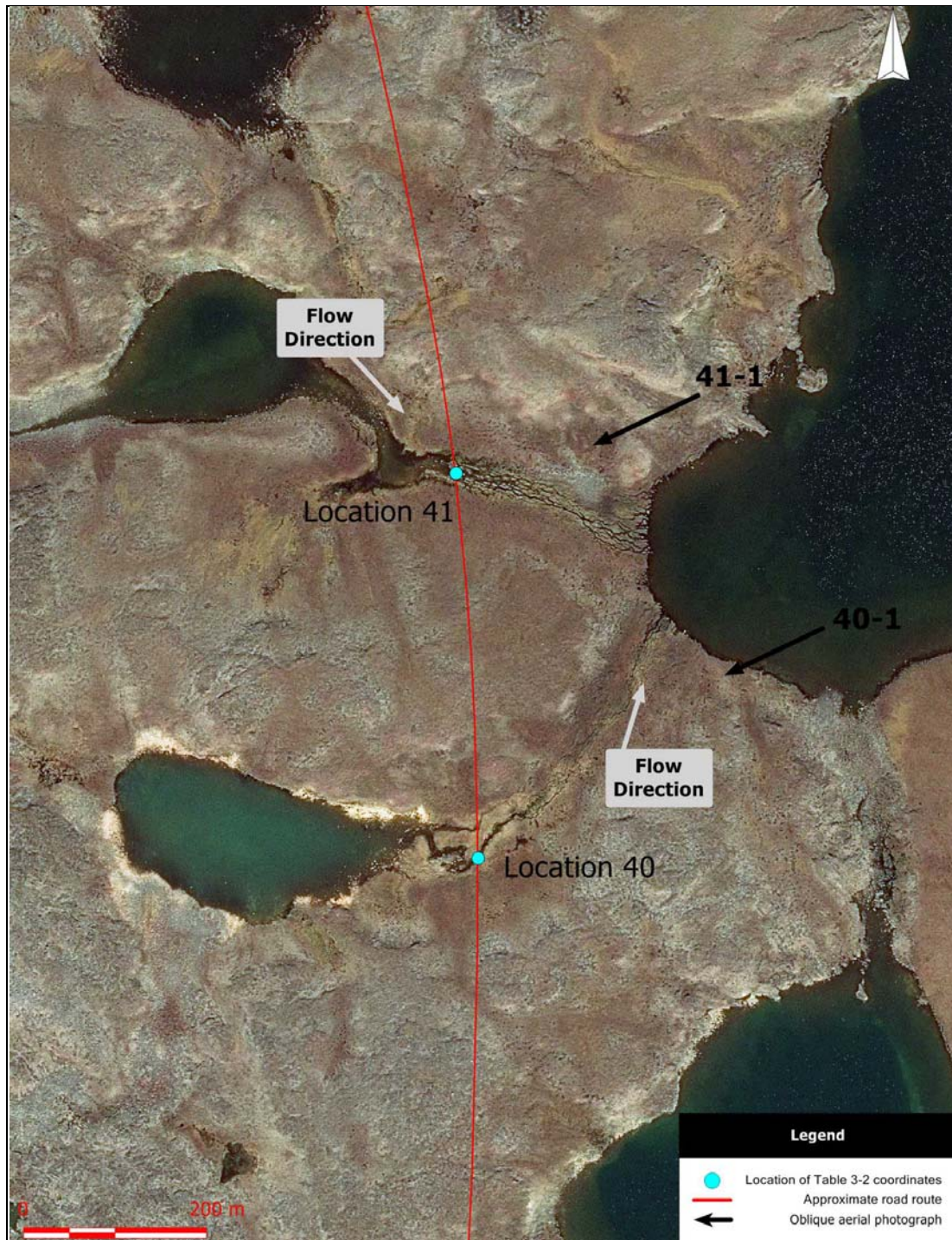


Location 39. Oblique aerial photograph 39-1.



Location 39. Oblique aerial photograph 39-2.





Locations 40 and 41. Aerial photograph (scale 1:5000) showing the approximate road route, the location of coordinates provided in Table 3-2, the flow direction, and the location of oblique aerial photographs.





Location 40. Oblique aerial photograph 40-1.



Location 40. Photograph from the ground. Downstream view of one channel from 280 m downstream from the approximate crossing location. Rocky section of watercourse.