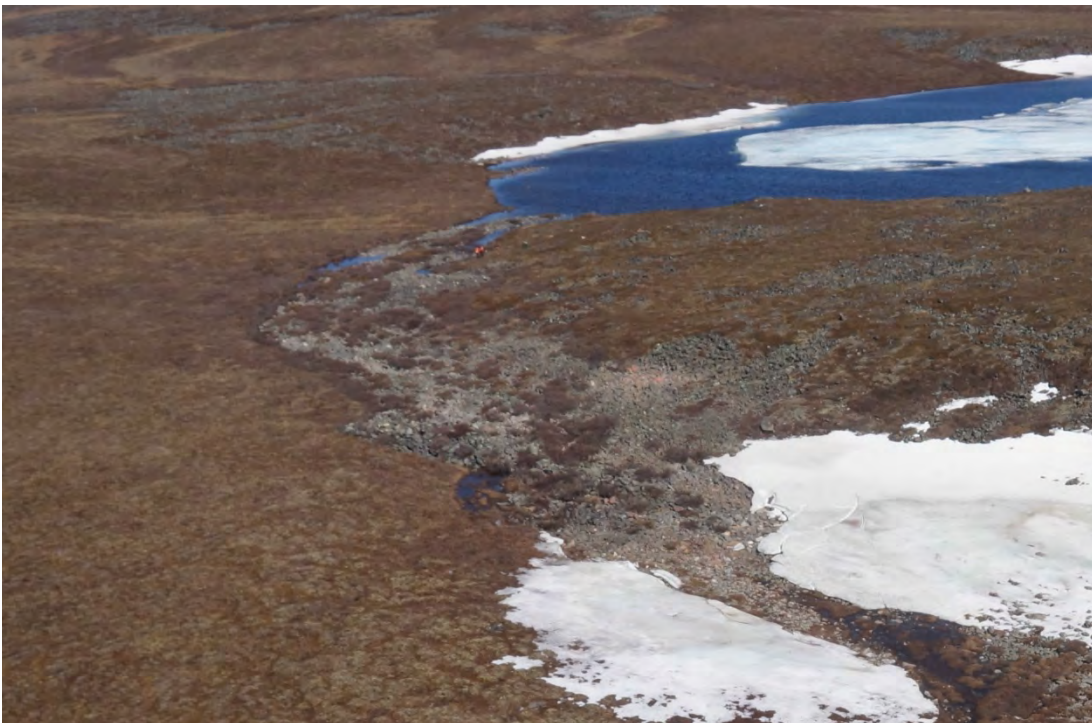


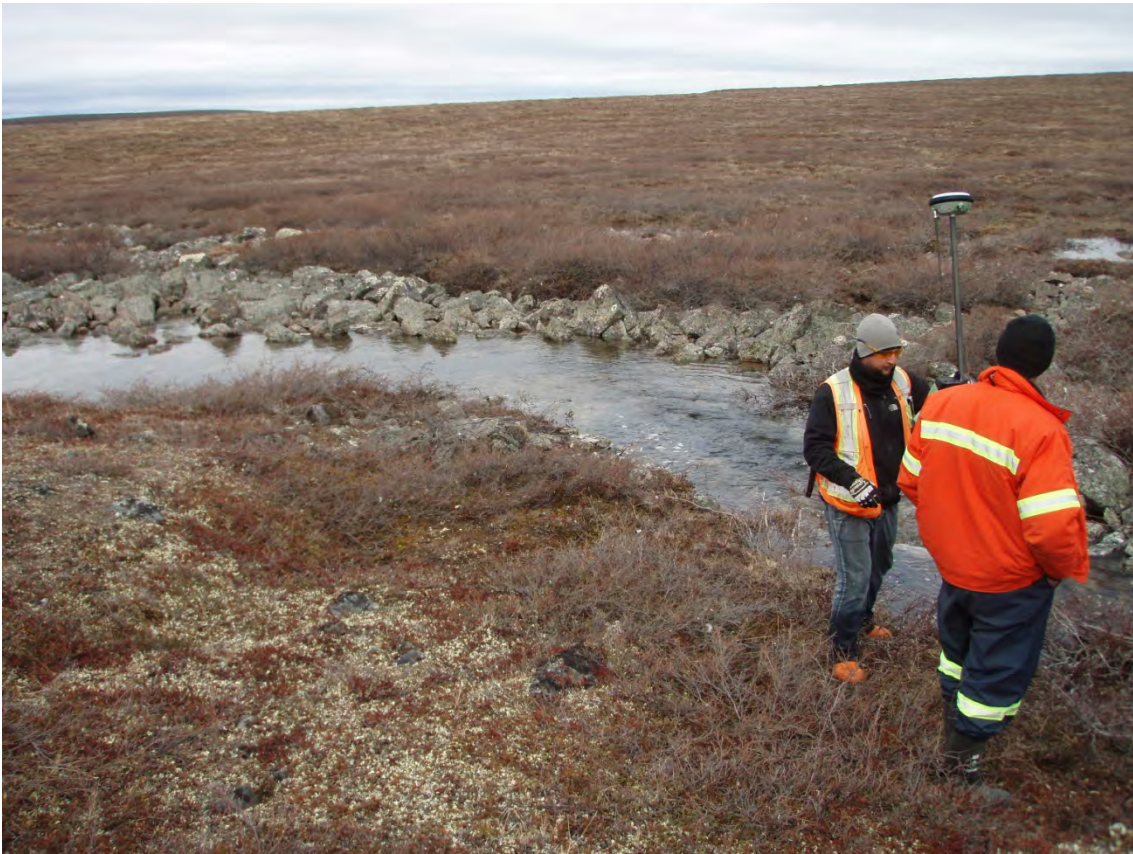


Kilometre 18.6. Oblique aerial photograph 18.6-1. August 30, 2014.

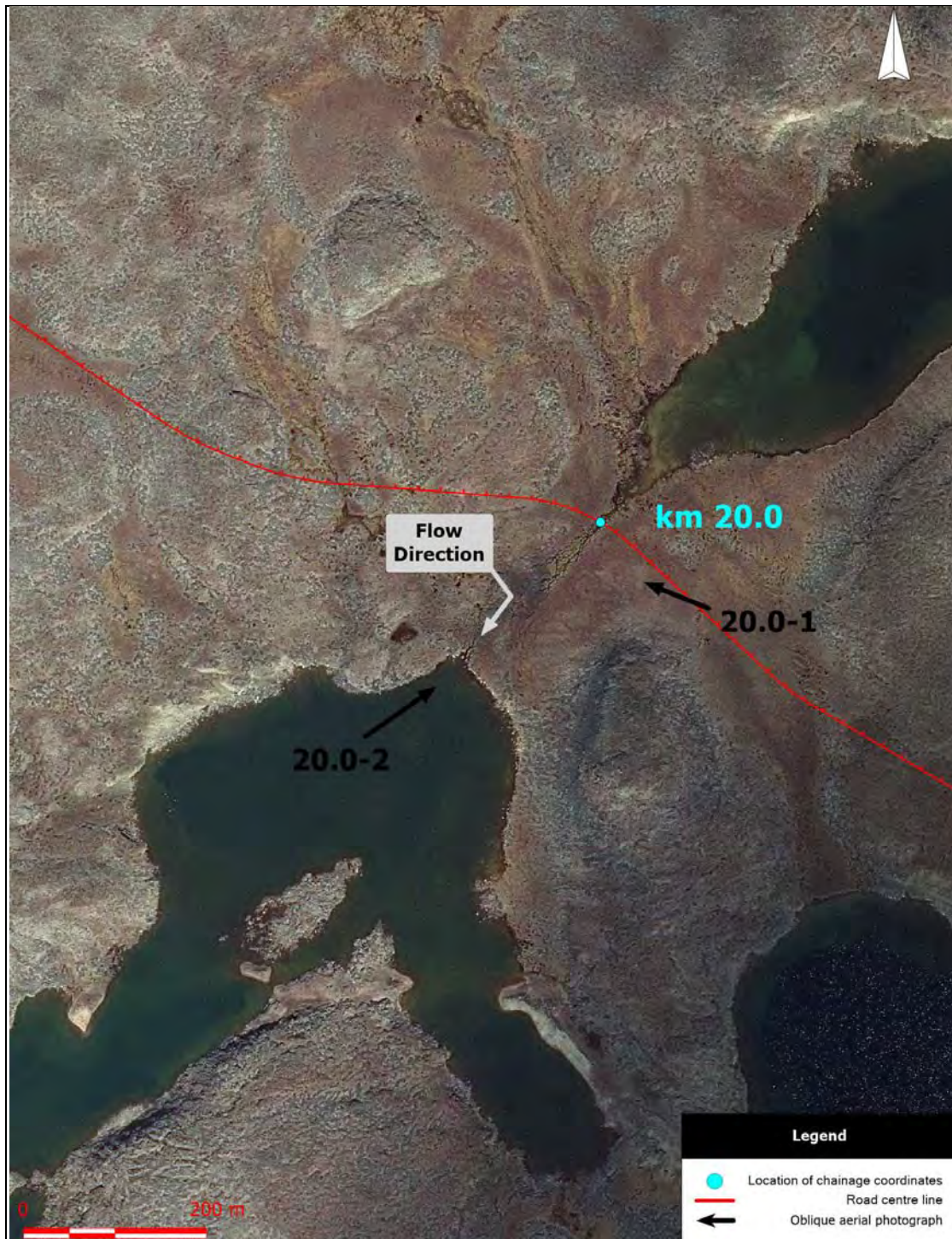


Kilometre 18.6. Oblique aerial photograph 18.6-2. June 29, 2015.



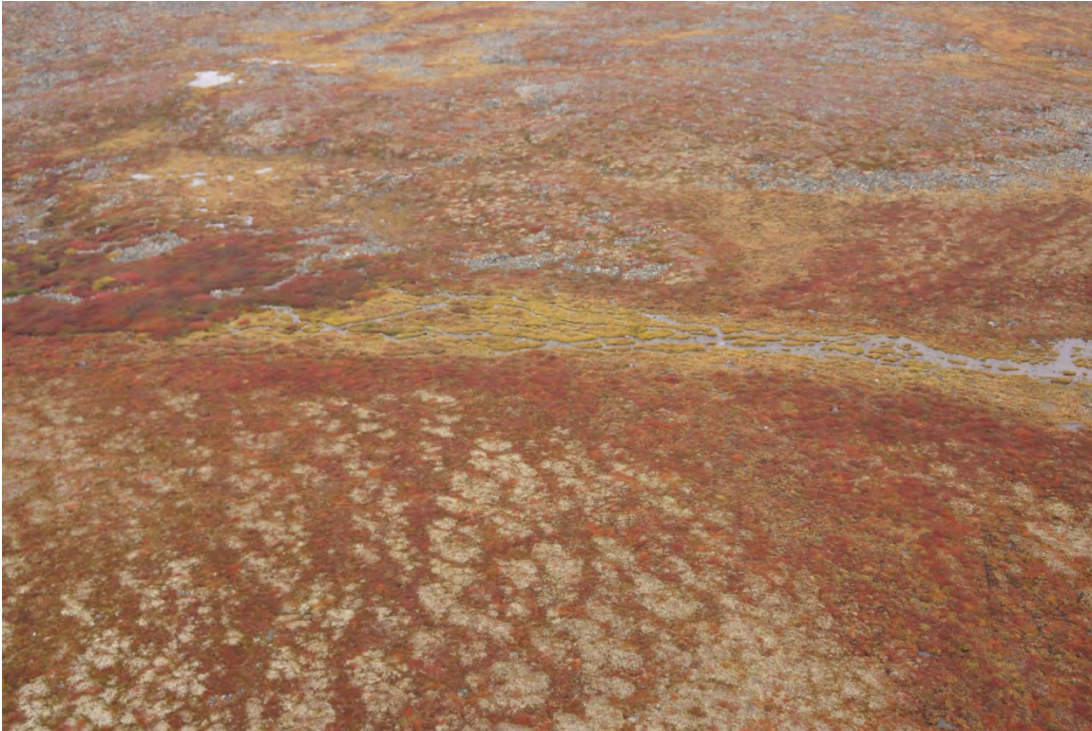


Kilometre 18.6. Photograph from the ground. Road crossing location. June 23, 2015.

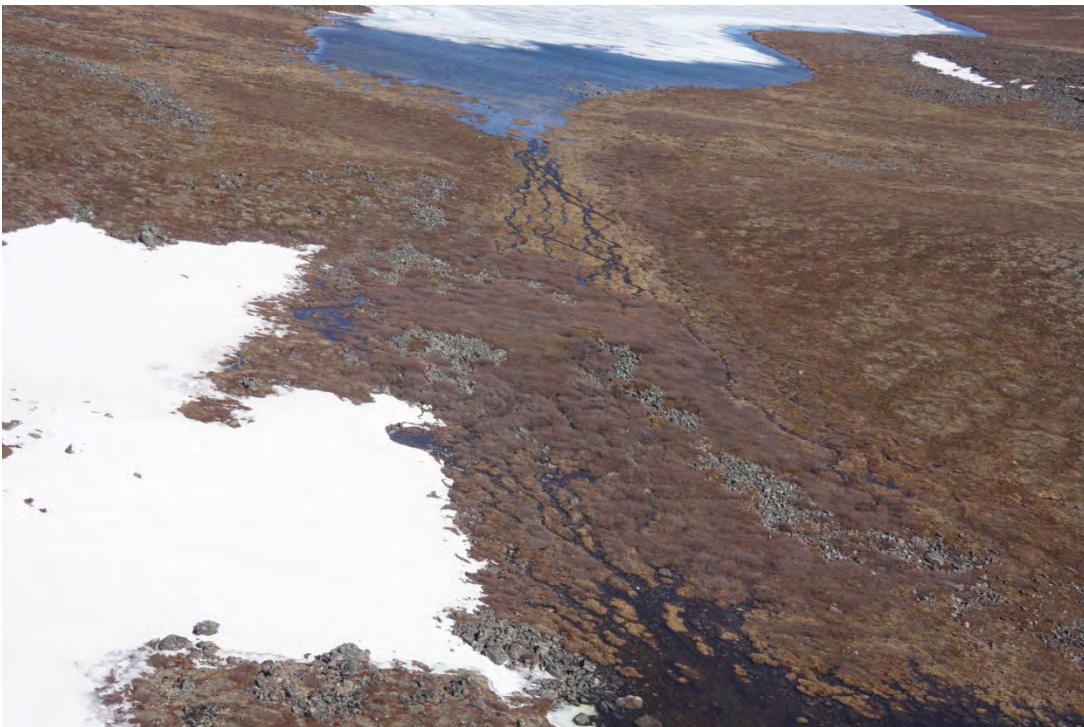


Kilometre 20.0. Aerial photograph showing the road centre line, the location of chainage coordinates provided in Table 3-2, the flow direction, and the location of oblique aerial photographs.





Kilometre 20.0. Oblique aerial photograph 20.0-1. August 29, 2014.



Kilometre 20.0. Oblique aerial photograph 20.0-2. June 29, 2015.





Kilometre 20.0. Photograph from the ground. Near watercourse mouth. September 2, 2014.



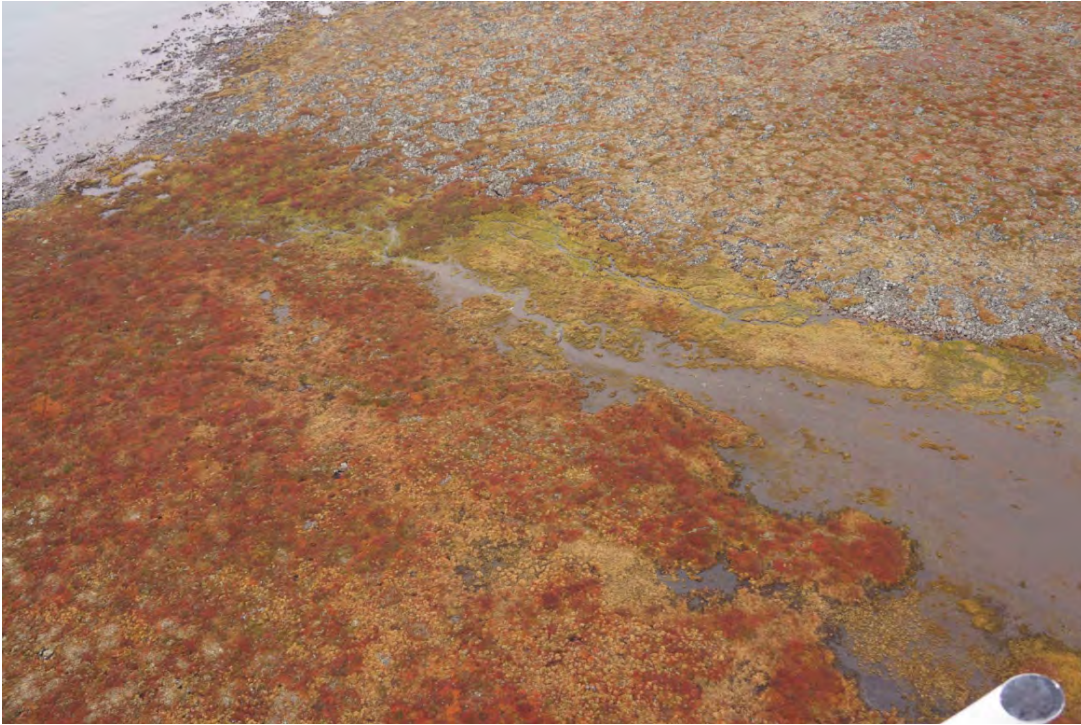
Kilometre 20.0. Photograph from the ground. Upstream view approximately 200 m upstream of watercourse mouth. September 2, 2014.



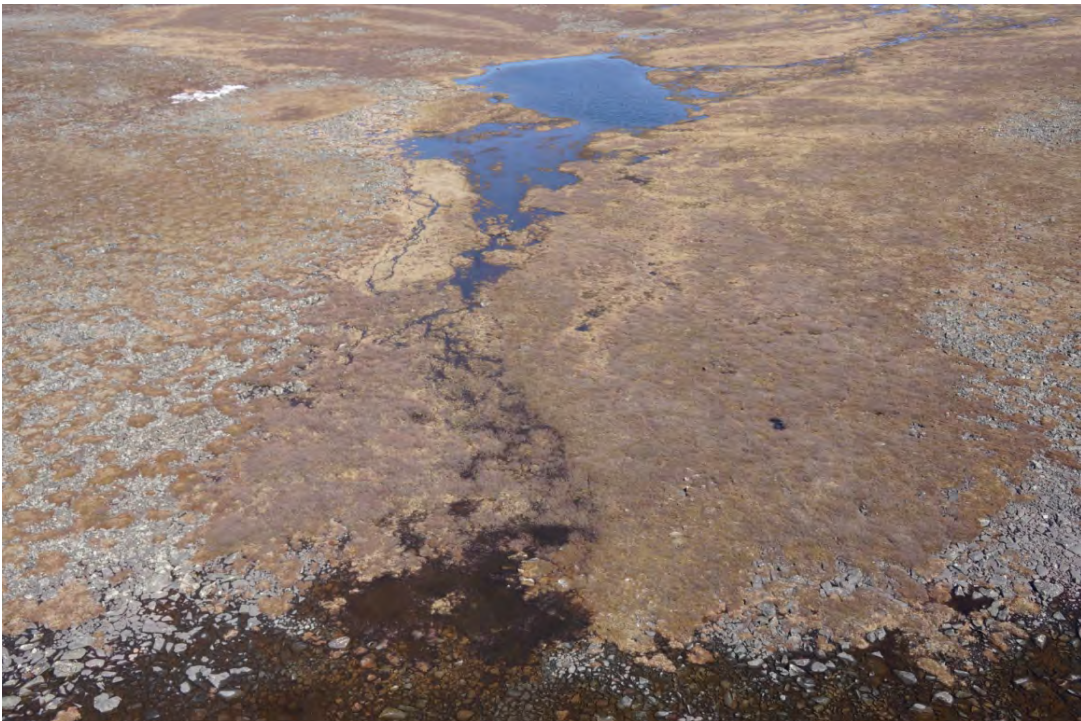


Kilometre 22.1. Aerial photograph showing the road centre line, the location of chainage coordinates provided in Table 3-2, the flow direction, and the location of oblique aerial photographs.





Kilometre 22.1. Oblique aerial photograph 22.1-1. August 29, 2014.



Kilometre 22.1. Oblique aerial photograph 22.1-2. June 29, 2015.





Kilometre 22.1. Photograph from the ground. Upstream view approximately 100 m upstream of watercourse mouth. August 31, 2014.



Kilometre 22.1. Photograph from the ground. Upstream view approximately 180 m upstream of watercourse mouth. August 31, 2014.



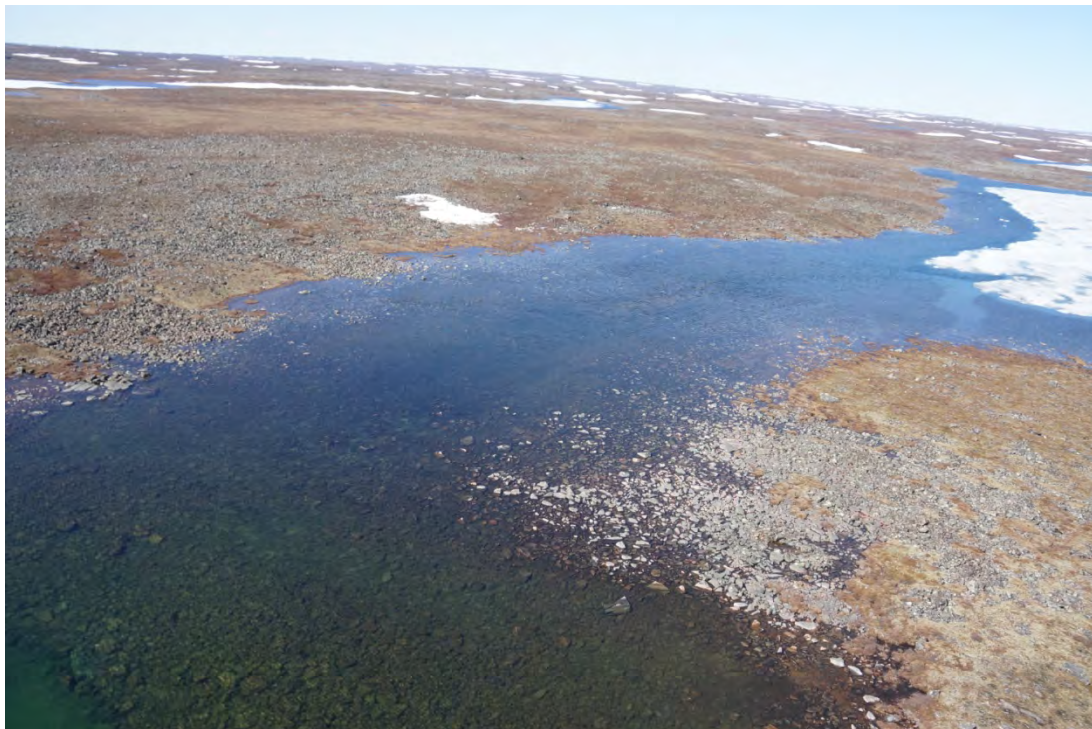


Kilometre 23.9. Aerial photograph showing the road centre line, the location of chainage coordinates provided in Table 3-2, the flow direction, and the location of oblique aerial photographs.





Kilometre 23.9. Oblique aerial photograph 23.9-1. August 29, 2014.



Kilometre 23.9. Oblique aerial photograph 23.9-2. June 29, 2015.





Kilometre 23.9. Photograph from the ground. Note flow through narrows. August 31, 2014.



Kilometre 23.9. Photograph from the ground. June 23, 2015.



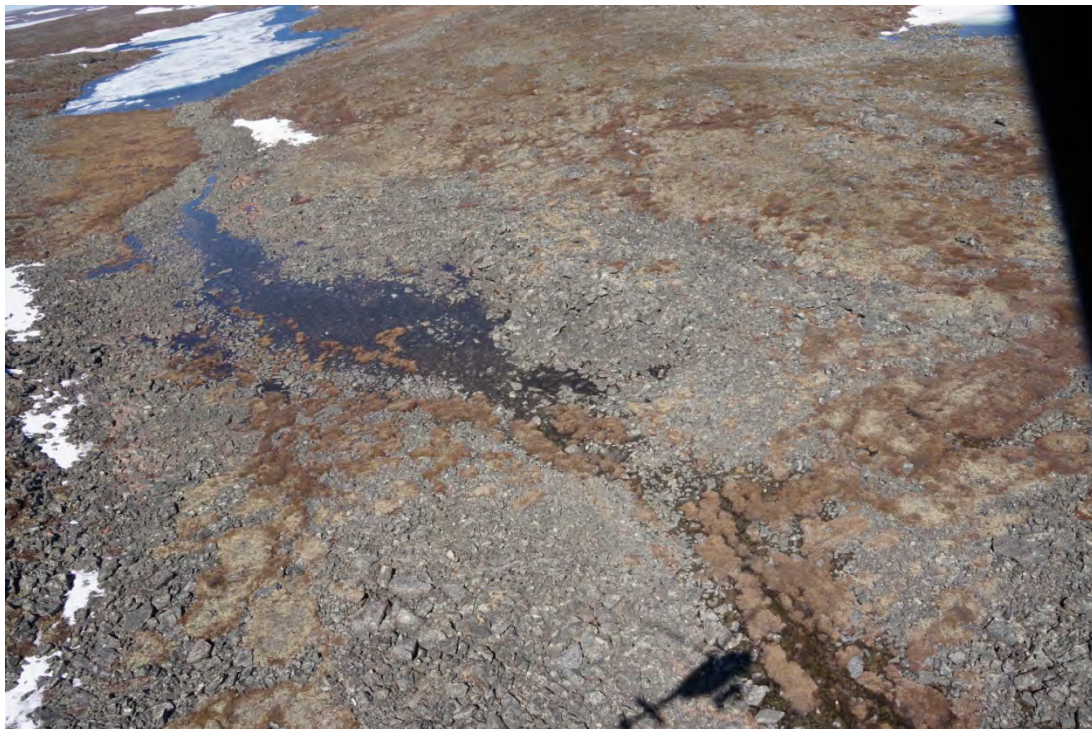


Kilometre 26.1. Aerial photograph showing the road centre line, the location of chainage coordinates provided in Table 3-2, the flow direction, and the location of oblique aerial photographs.





Kilometre 26.1. Oblique aerial photograph 26.1-1. August 29, 2014. Crossing at centre.



Kilometre 26.1. Oblique aerial photograph 26.1-2. June 29, 2015.





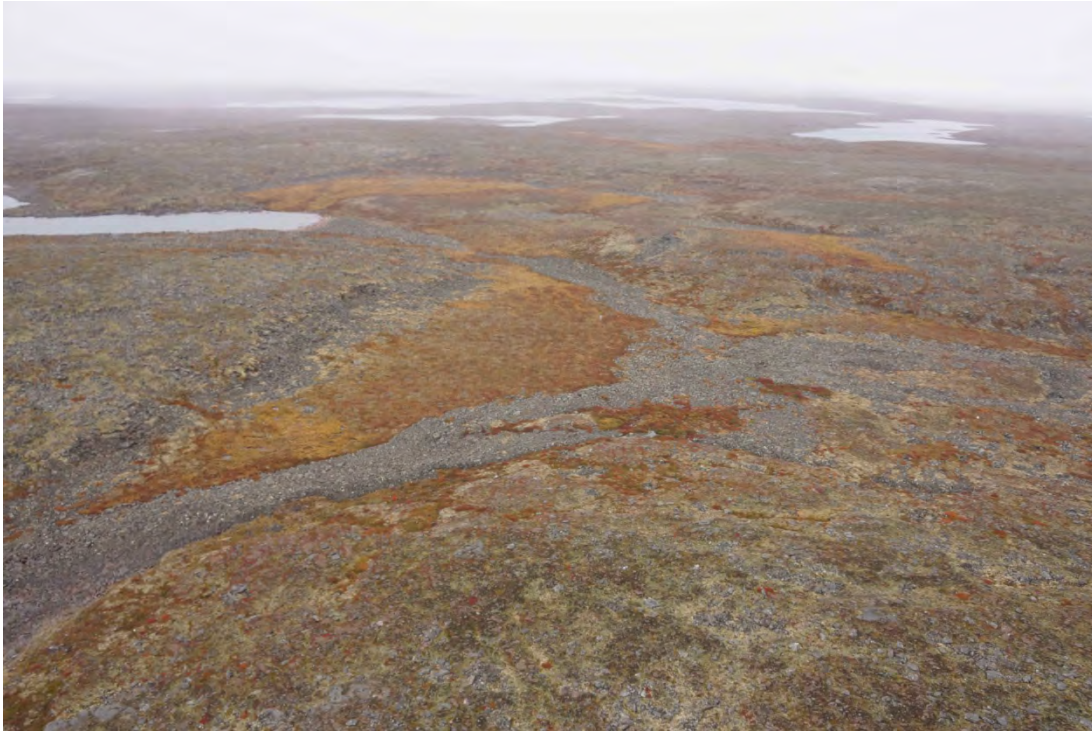
Kilometre 26.1. Photograph from the ground. Upstream view approximately 130 m downstream from road crossing location. June 23, 2015.



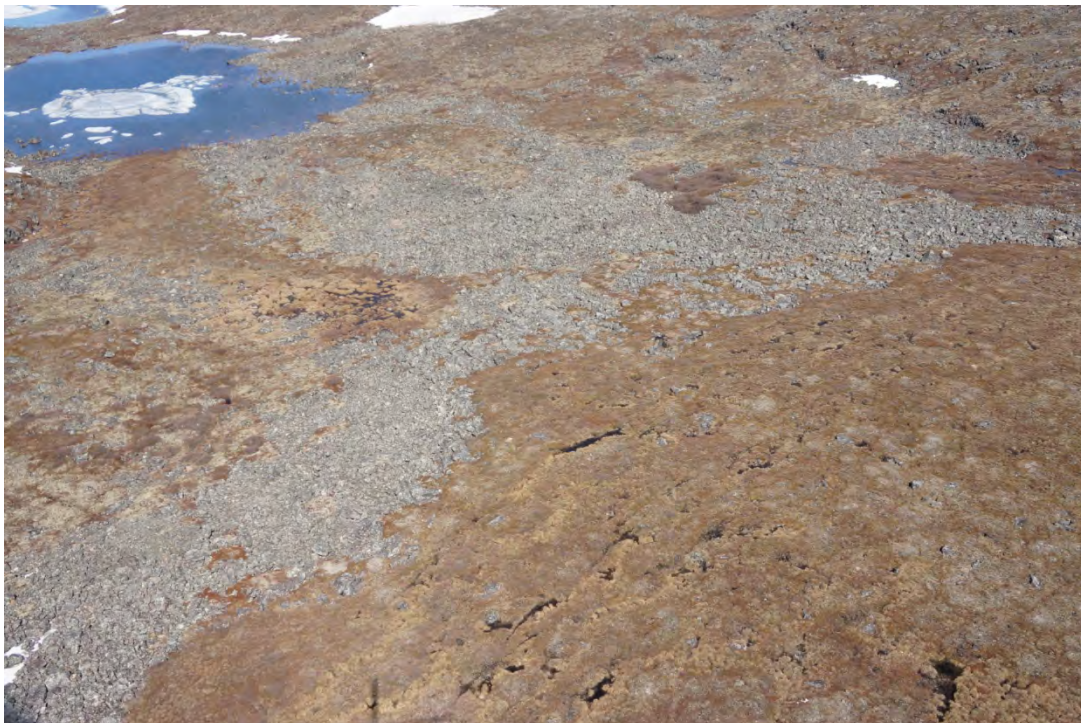


Kilometre 28.3. Aerial photograph showing the road centre line, the location of chainage coordinates provided in Table 3-2, the flow direction, and the location of oblique aerial photographs.





Kilometre 28.3. Oblique aerial photograph 28.3-1. August 29, 2014.



Kilometre 28.3. Oblique aerial photograph 28.3-2. June 29, 2015.





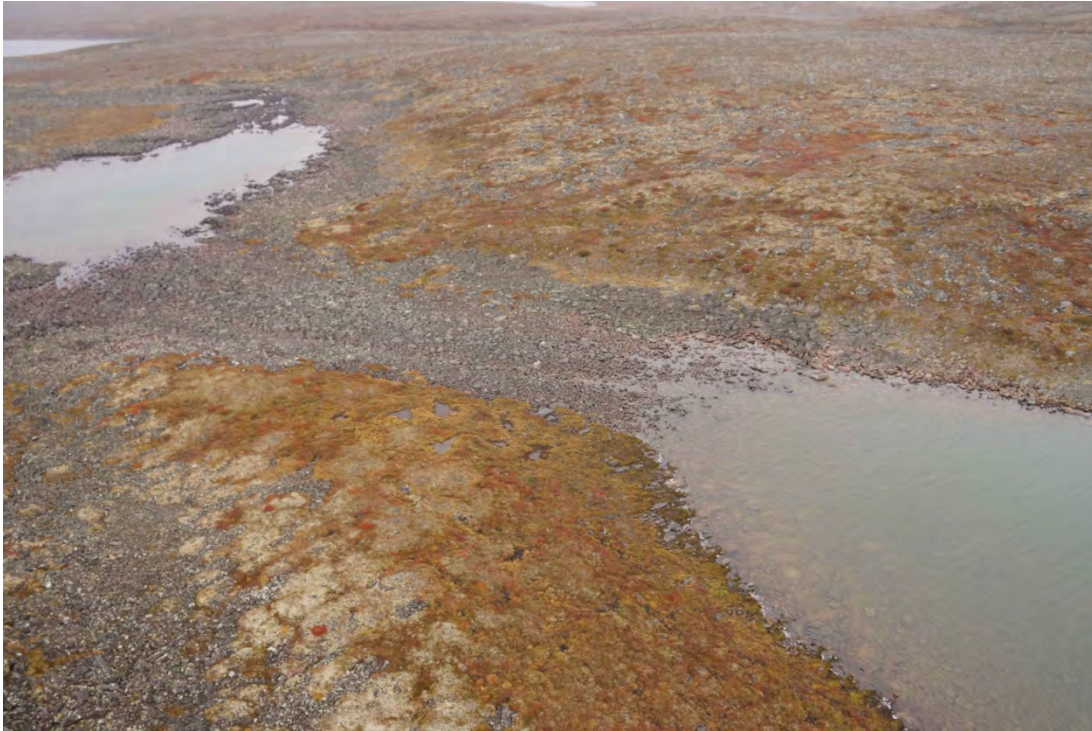
Kilometre 28.3. Photograph from the ground. Road crossing location. June 23, 2015.



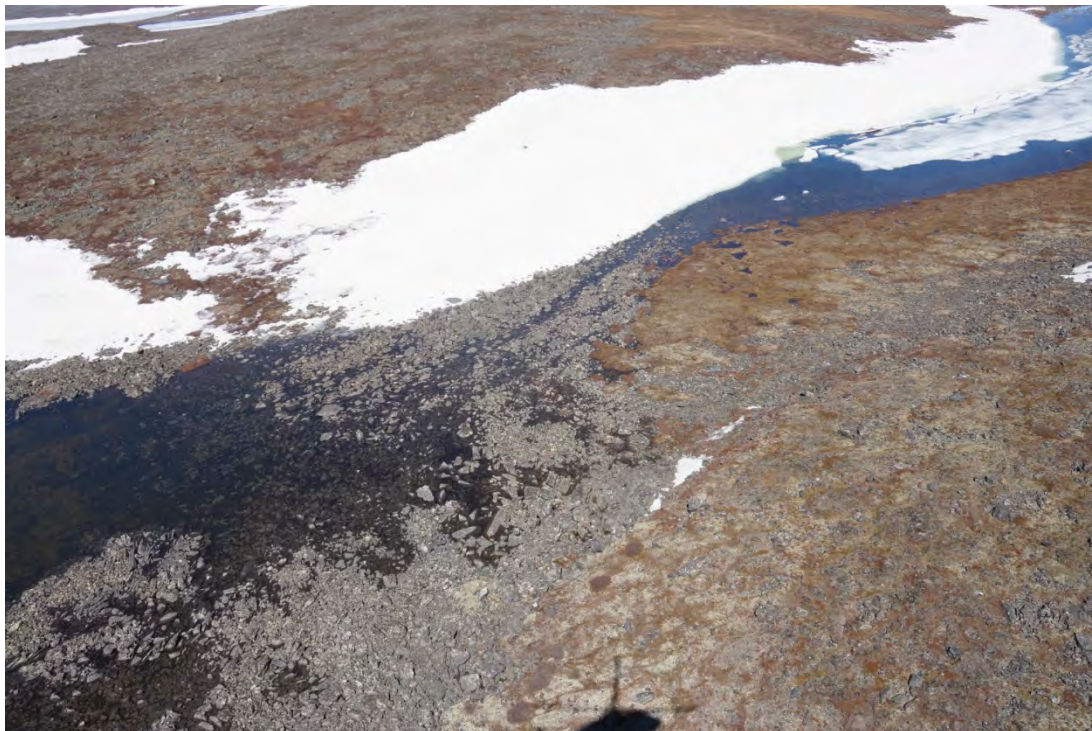


Kilometre 30.4. Aerial photograph showing the road centre line, the location of chainage coordinates provided in Table 3-2, the flow direction, and the location of oblique aerial photographs.





Kilometre 30.4. Oblique aerial photograph 30.4-1. August 29, 2014.



Kilometre 30.4. Oblique aerial photograph 30.4-2. June 29, 2015.





Kilometre 32.3. Aerial photograph showing the road centre line, the location of chainage coordinates provided in Table 3-2, the flow direction, and the location of oblique aerial photographs.





Kilometre 32.3. Oblique aerial photograph 32.3-1. August 30, 2014. Crossing a photograph centre.



Kilometre 32.3. Oblique aerial photograph 32.3-2. June 29, 2015.





Kilometre 32.3. Photograph from the ground. Upstream view through approximate crossing located approximately 80 m from camera. September 1, 2014.



Kilometre 32.3. Photograph from the ground. Upstream view through approximate crossing located approximately 60 m from camera. June 23, 2015.





Kilometre 36.2. Aerial photograph showing the road centre line, the location of chainage coordinates provided in Table 3-2, the flow direction, and the location of oblique aerial photographs.