



Kilometre 36.2. Oblique aerial photograph 36.2-1. August 30, 2014.



Kilometre 36.2. Oblique aerial photograph 36.2-2. August 30, 2014.





Kilometre 41.8. Aerial photograph showing the road centre line, the location of chainage coordinates provided in Table 3-2, and the flow direction.



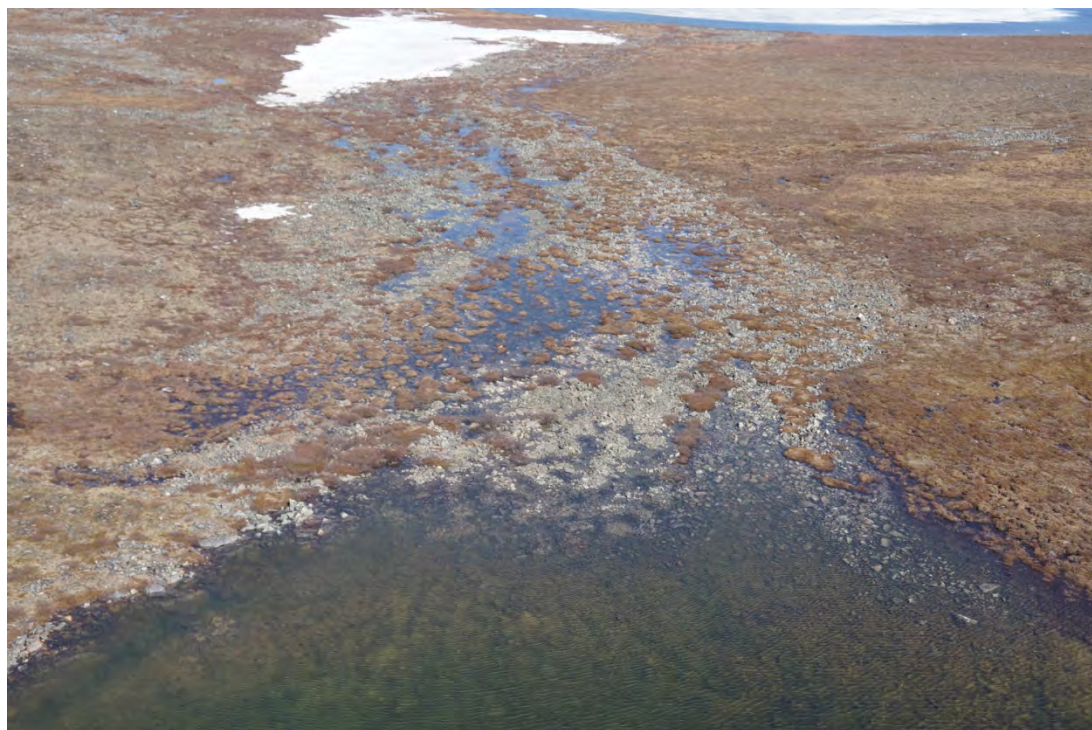


Kilometre 43.5. Aerial photograph showing the road centre line, the location of chainage coordinates provided in Table 3-2, the flow direction, and the location of oblique aerial photographs.





Kilometre 43.5. Oblique aerial photograph 43.5-1. August 30, 2014.



Kilometre 43.5. Oblique aerial photograph 43.5-2. June 29, 2015.





Kilometre 43.5. Photograph from the ground. Road crossing location. June 23, 2015.



Kilometres 44.4 and 44.8. Aerial photograph showing the road centre line, the location of chainage coordinates provided in Table 3-2, the flow direction, and the location of oblique aerial photographs.





Kilometre 44.4. Oblique aerial photograph 44.4-1. September 1, 2014.



Kilometre 44.4. Oblique aerial photograph 44.4-2. June 29, 2015.





Kilometre 44.4. Photograph from the ground. Downstream view of one channel from 270 m downstream from the approximate crossing location. Rocky section of watercourse. September 1, 2014.



Kilometre 44.4. Photograph from the ground. Downstream view of one channel from 270 m downstream from the approximate crossing location. Diffuse flow through vegetation. September 1, 2014.





Kilometre 44.8. Oblique aerial photograph 44.8-1. August 30, 2014.



Kilometre 44.8. Oblique aerial photograph 44.8-2. June 29, 2015.





Kilometre 44.8. Photograph from the ground. Downstream view from downstream of the road crossing location. September 1, 2014.



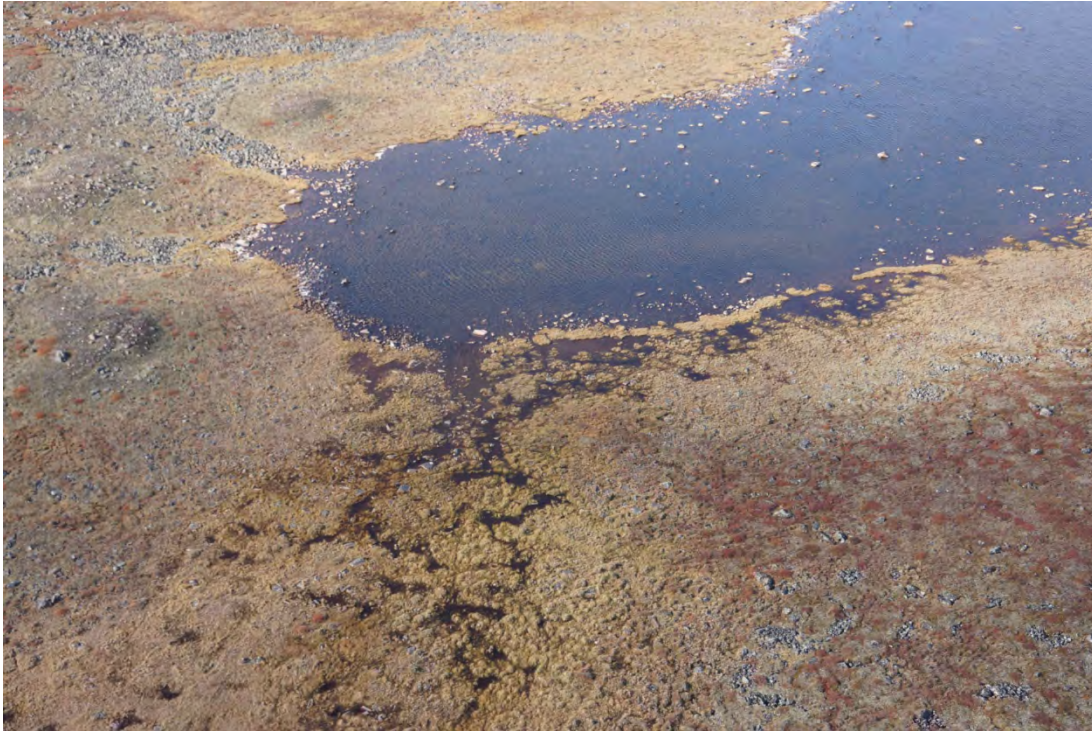
Kilometre 44.8. Photograph from the ground. Downstream view from downstream of the road crossing location. June 23, 2015.



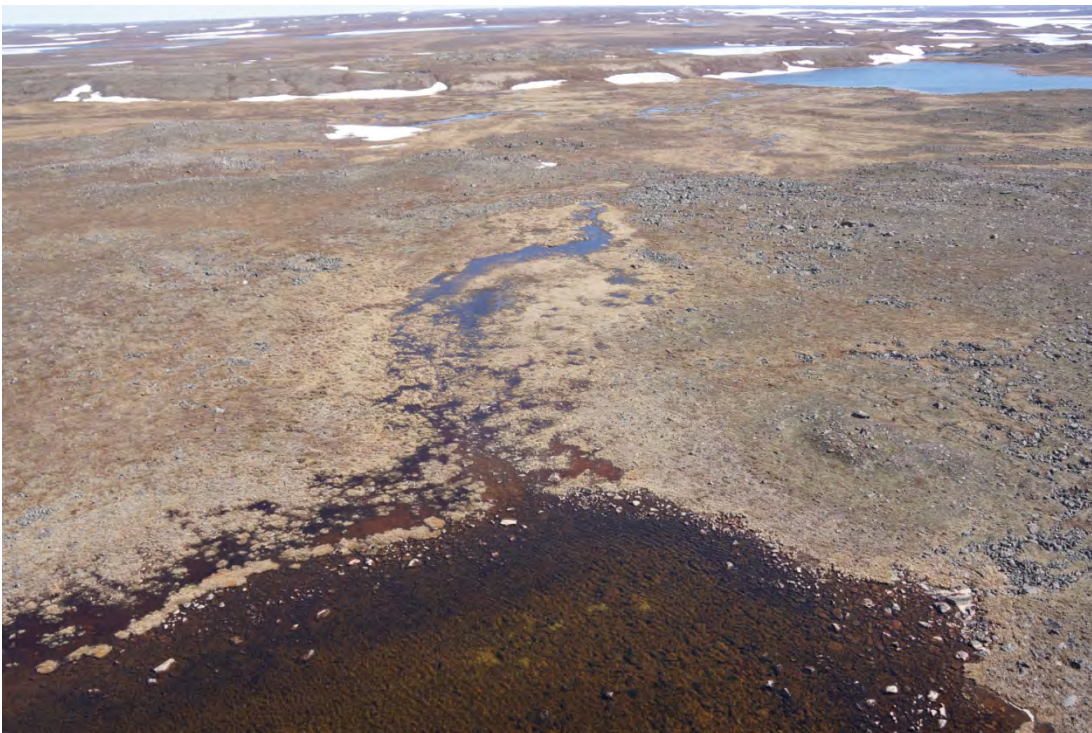


Kilometre 46.1. Aerial photograph showing the road centre line, the location of chainage coordinates provided in Table 3-2, the flow direction, and the location of oblique aerial photographs.





Kilometre 46.1. Oblique aerial photograph 46.1-1. August 30, 2014.



Kilometre 46.1. Oblique aerial photograph 46.1-2. June 29, 2015.



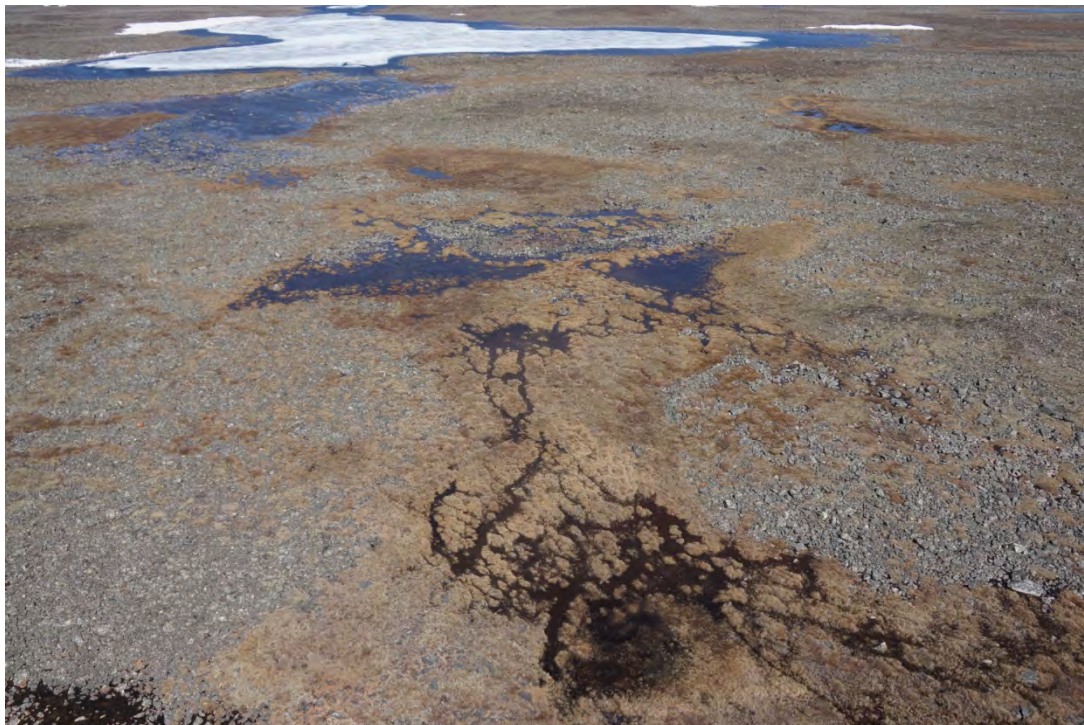


Kilometre 49.4. Aerial photograph showing the road centre line, the location of chainage coordinates provided in Table 3-2, the flow direction, and the location of oblique aerial photographs.





Kilometre 49.4. Oblique aerial photograph 49.4-1. August 30, 2014.



Kilometre 49.4. Oblique aerial photograph 49.4-2. June 29, 2015.



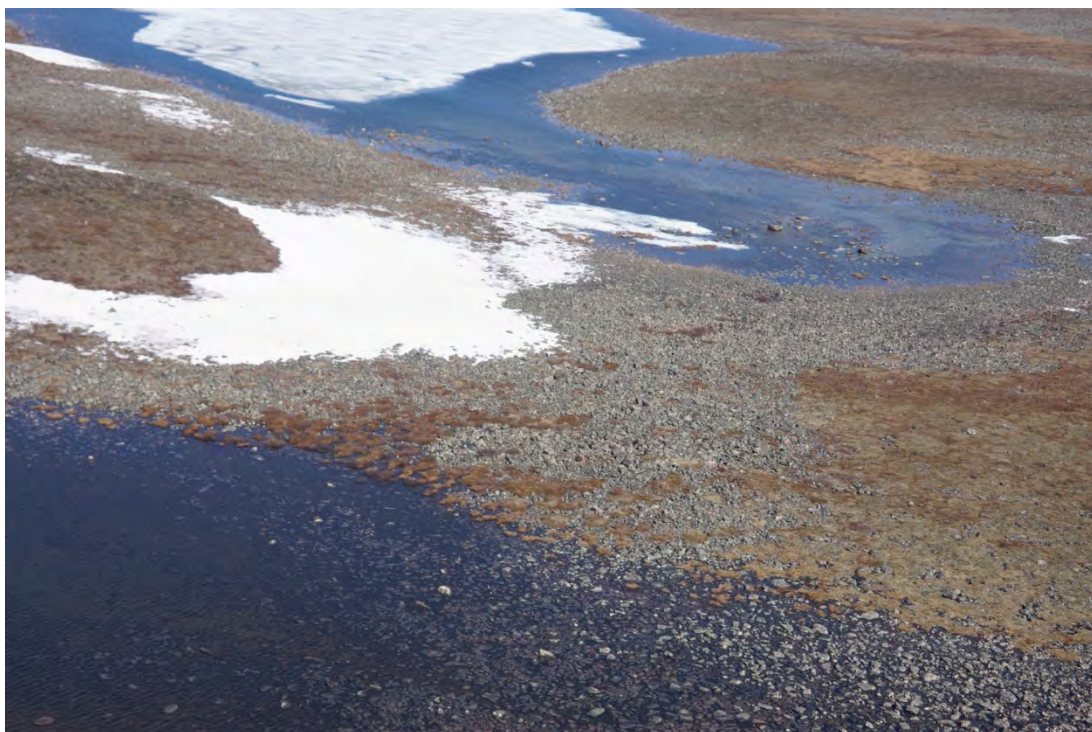


Kilometres 51.2 and 51.8. Aerial photograph showing the road centre line, the location of chainage coordinates provided in Table 3-2, the flow direction, and the location of oblique aerial photographs.



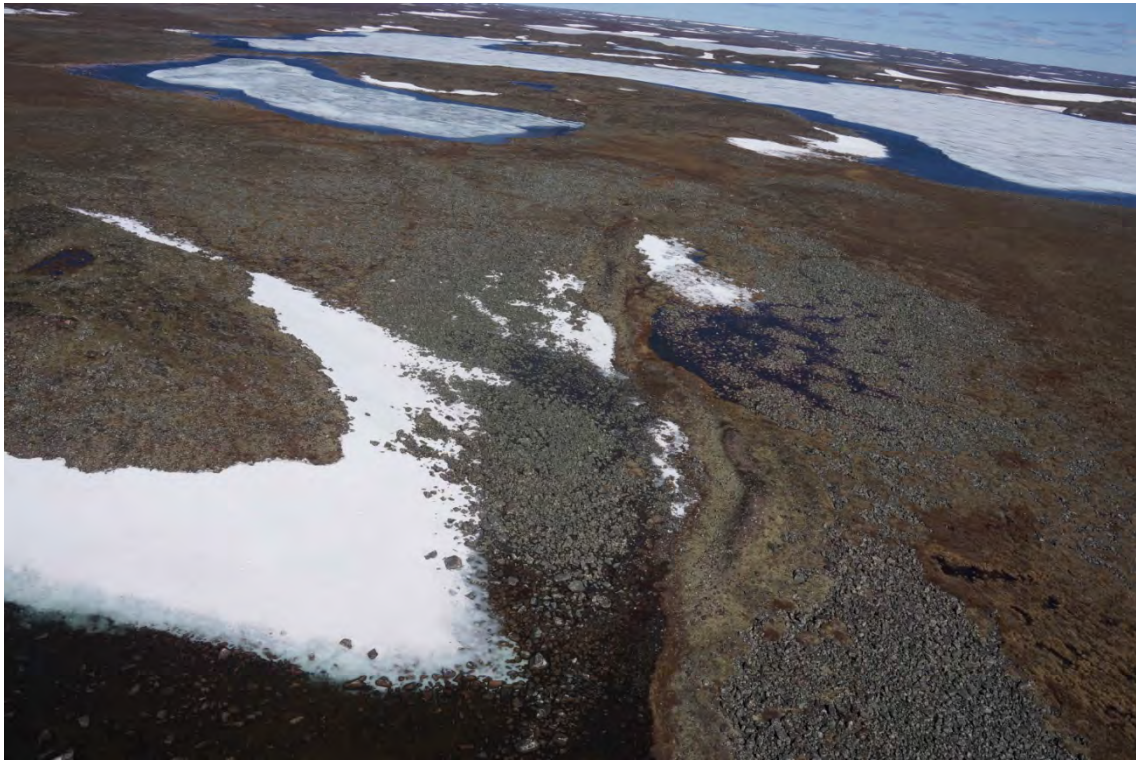


Kilometre 51.2. Oblique aerial photograph 51.2-1. August 30, 2014.



Kilometre 51.2. Oblique aerial photograph 51.2-2. June 29, 2015.





Kilometre 51.8. Oblique aerial photograph 51.8-1. June 29, 2015. There is no 2014 photograph.



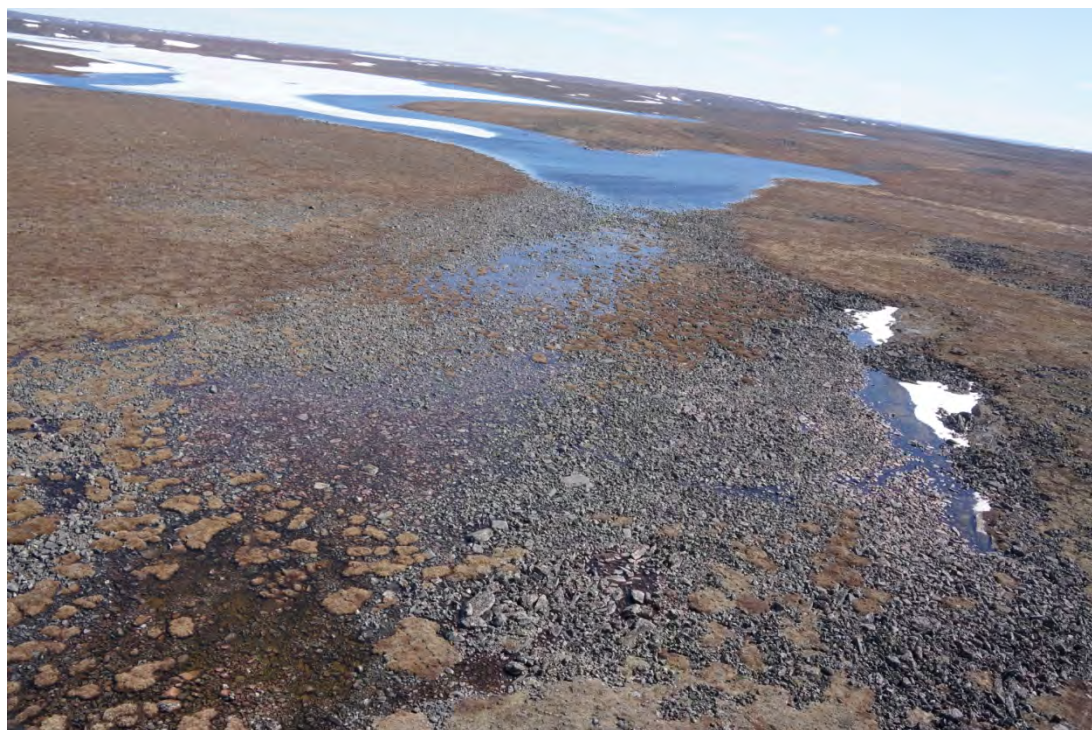


Kilometre 56.9. Aerial photograph showing the road centre line, the location of chainage coordinates provided in Table 3-2, the flow direction, and the location of oblique aerial photographs.





Kilometre 56.9. Oblique aerial photograph 56.9-1. August 30, 2014.



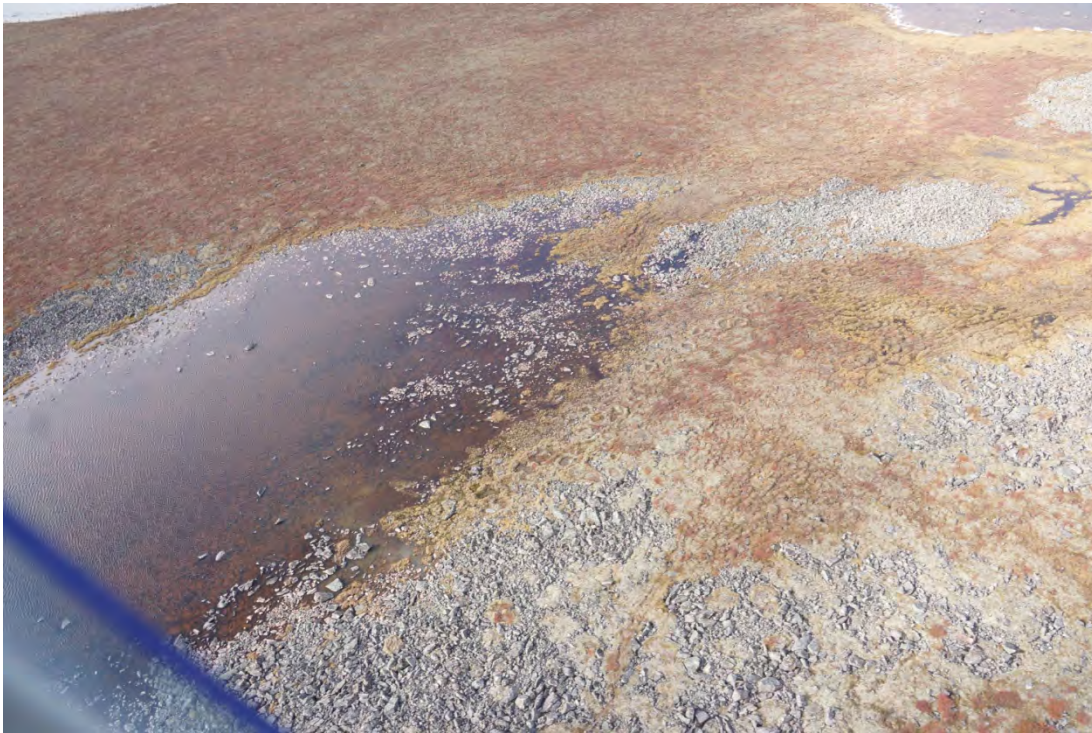
Kilometre 56.9. Oblique aerial photograph 56.9-2. June 29, 2015.



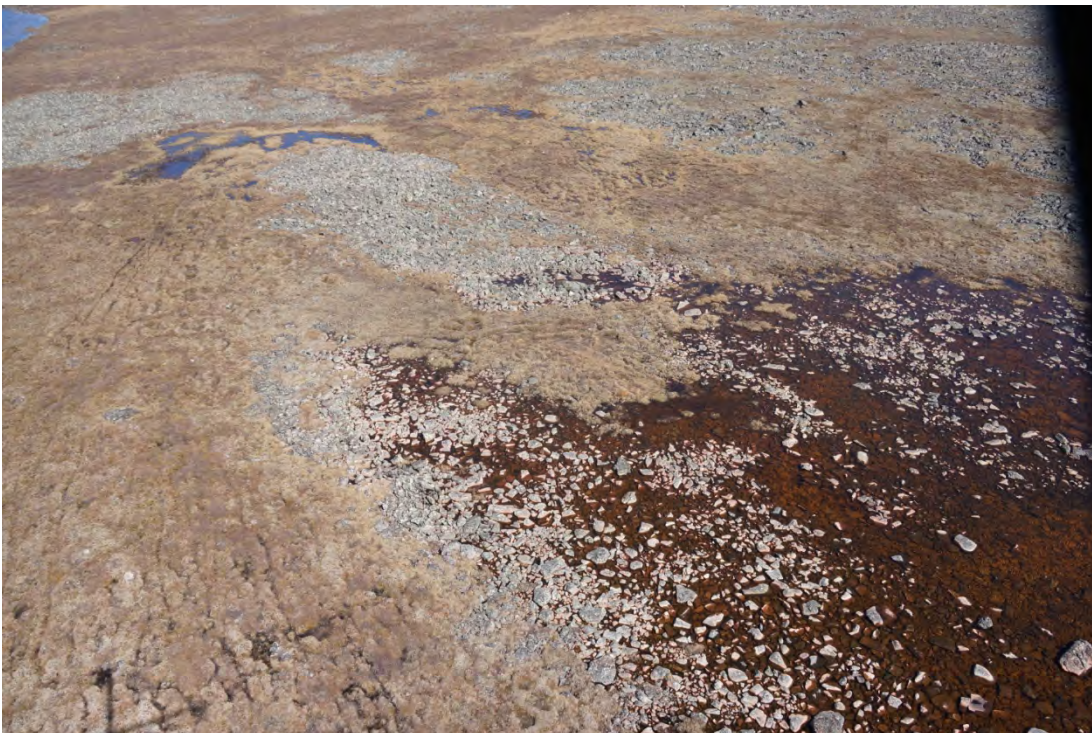


Kilometre 59.7. Aerial photograph showing the road centre line, the location of chainage coordinates provided in Table 3-2, the flow direction, and the location of oblique aerial photographs.





Kilometre 59.7. Oblique aerial photograph 59.7-1. August 30, 2014.



Kilometre 59.7. Oblique aerial photograph 59.7-2. June 29, 2015.





Kilometre 63.1. Aerial photograph showing the road centre line, the location of chainage coordinates provided in Table 3-2, the flow direction, and the location of oblique aerial photographs.