

Location 47. Aerial photograph (scale 1:5000) showing the approximate road route, the location of coordinates provided in Table 3-2, the flow direction, and the location of oblique aerial photographs.



Location 47. Oblique aerial photograph 47-1.



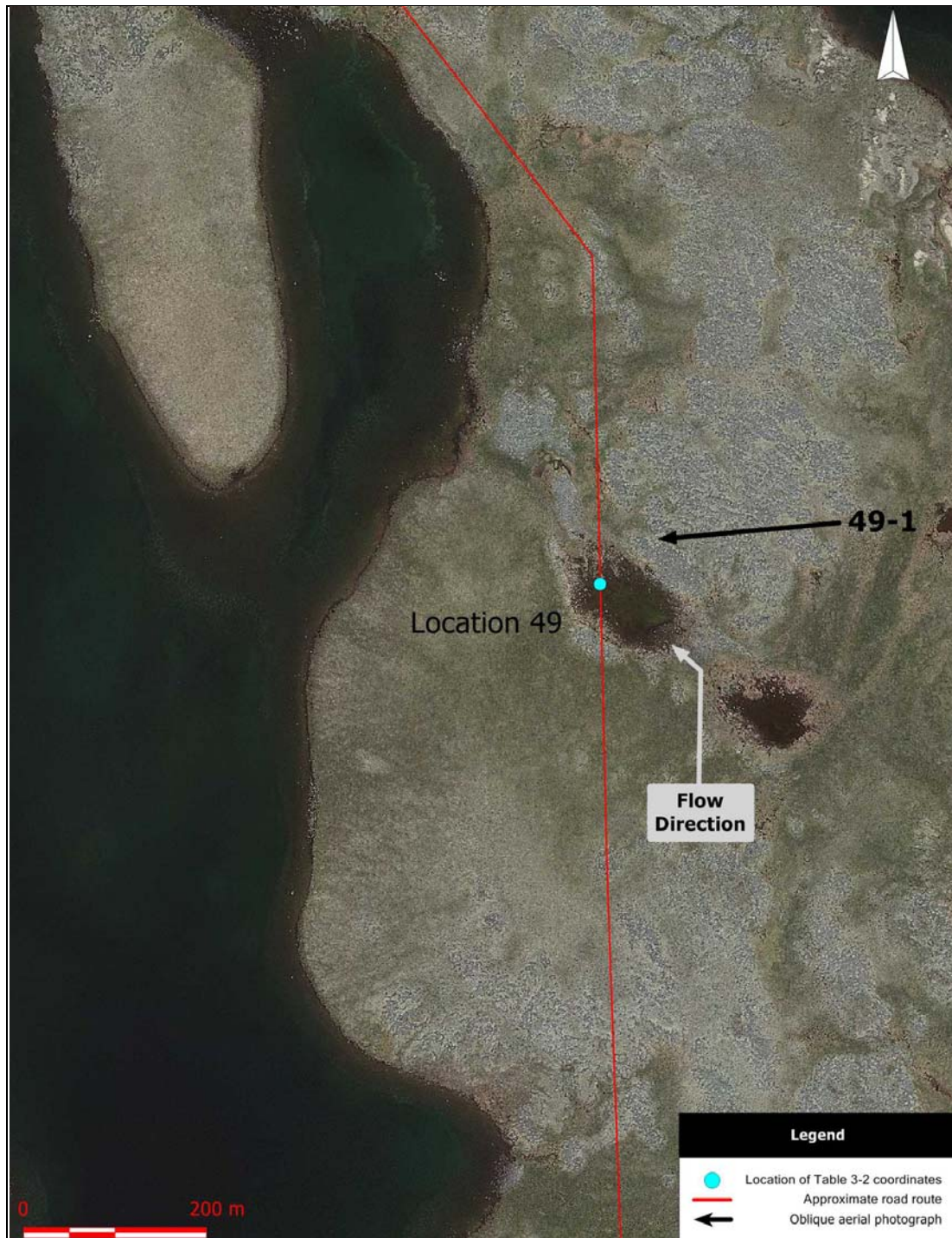


Location 48. Aerial photograph (scale 1:5000) showing the approximate road route, the location of coordinates provided in Table 3-2, the flow direction, and the location of oblique aerial photographs.



Location 48. Oblique aerial photograph 48-1.





Location 49. Aerial photograph (scale 1:5000) showing the approximate road route, the location of coordinates provided in Table 3-2, the flow direction, and the location of oblique aerial photographs. Lake at Location 49 will be avoided.



Location 49. Oblique aerial photograph 49-1.





Locations 50 and 51. Aerial photograph (scale 1:5000) showing the approximate road route, the location of coordinates provided in Table 3-2, the flow direction, and the location of oblique aerial photographs. Pond at Location 51 will be avoided.





Location 50. Oblique aerial photograph 50-1.



Location 51. Oblique aerial photograph 51-1





Location 52. Aerial photograph (scale 1:5000) showing the approximate road route, the location of coordinates provided in Table 3-2, and the flow direction. Pond at Location 52 will be avoided.



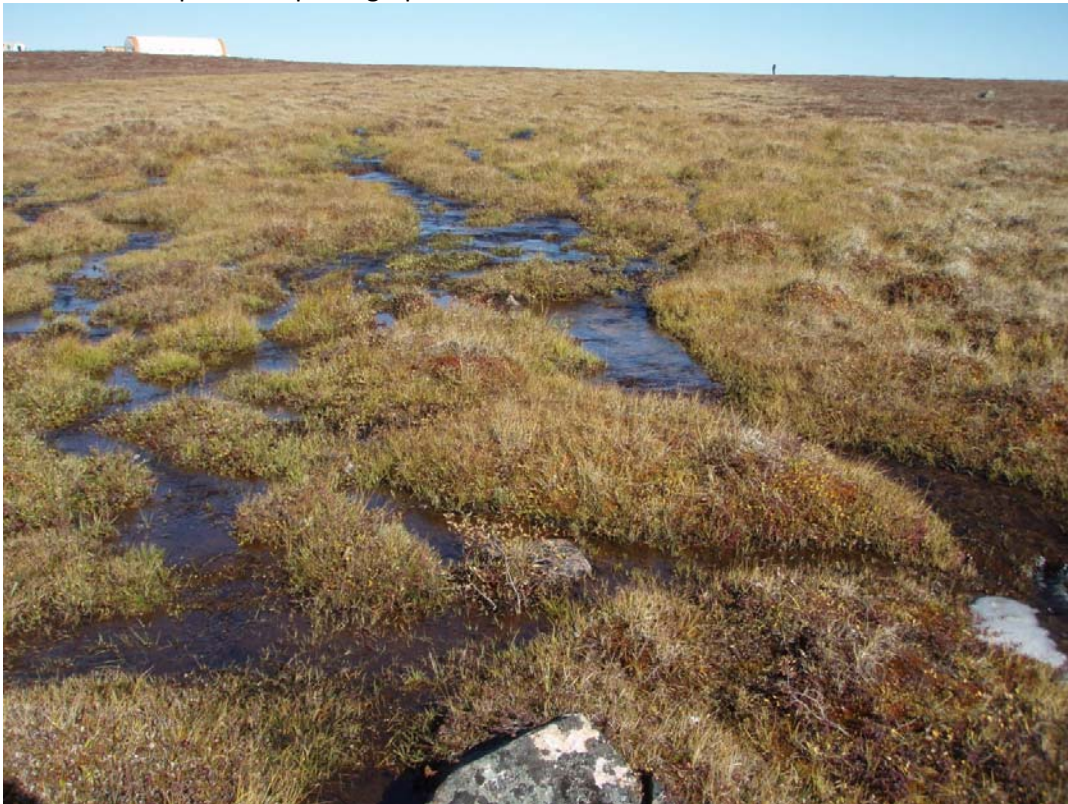


Location 53. Aerial photograph (scale 1:5000) showing the approximate road route, the location of coordinates provided in Table 3-2, the flow direction, and the location of oblique aerial photographs.



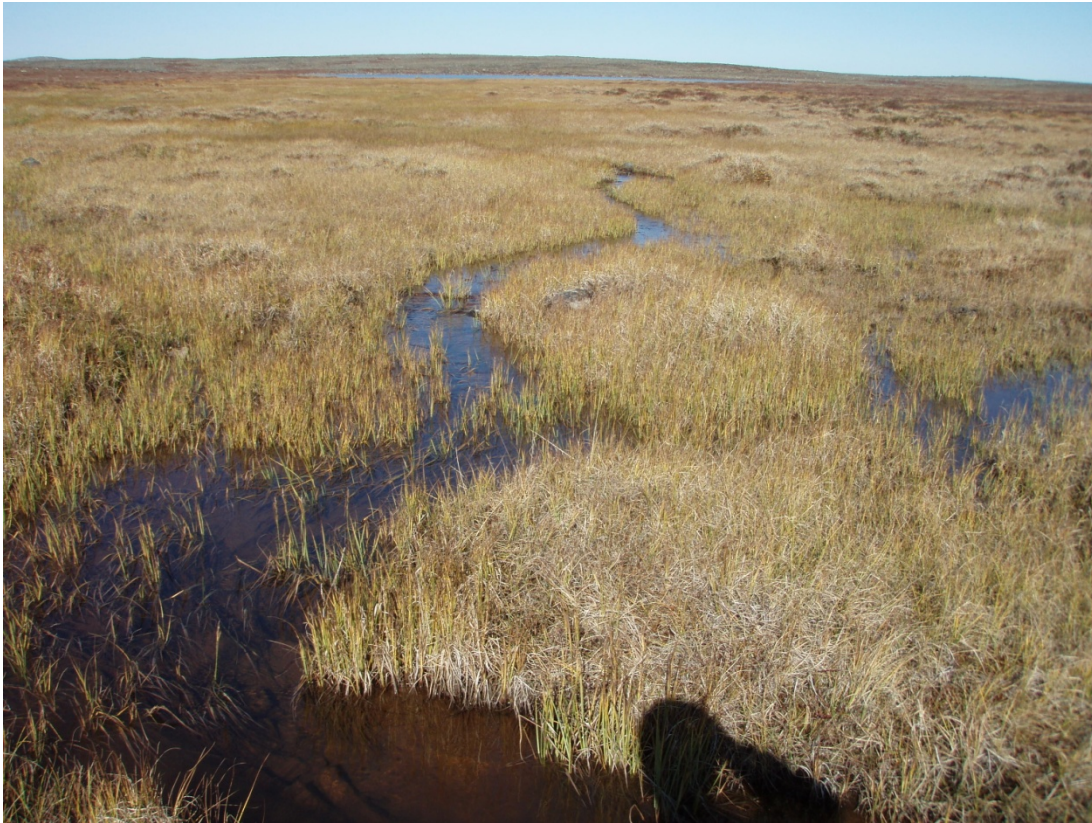


Location 53. Oblique aerial photograph 53-1.



Location 53. Photograph from the ground. Upstream view from watercourse mouth.





Location 53. Photograph from the ground. Upstream view from 65 m upstream from the approximate crossing location.