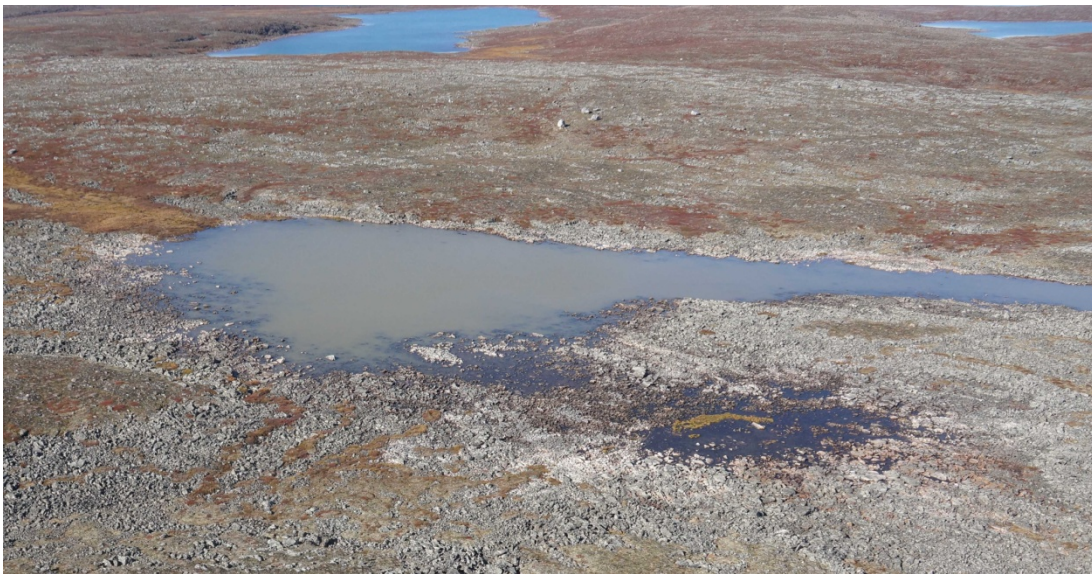


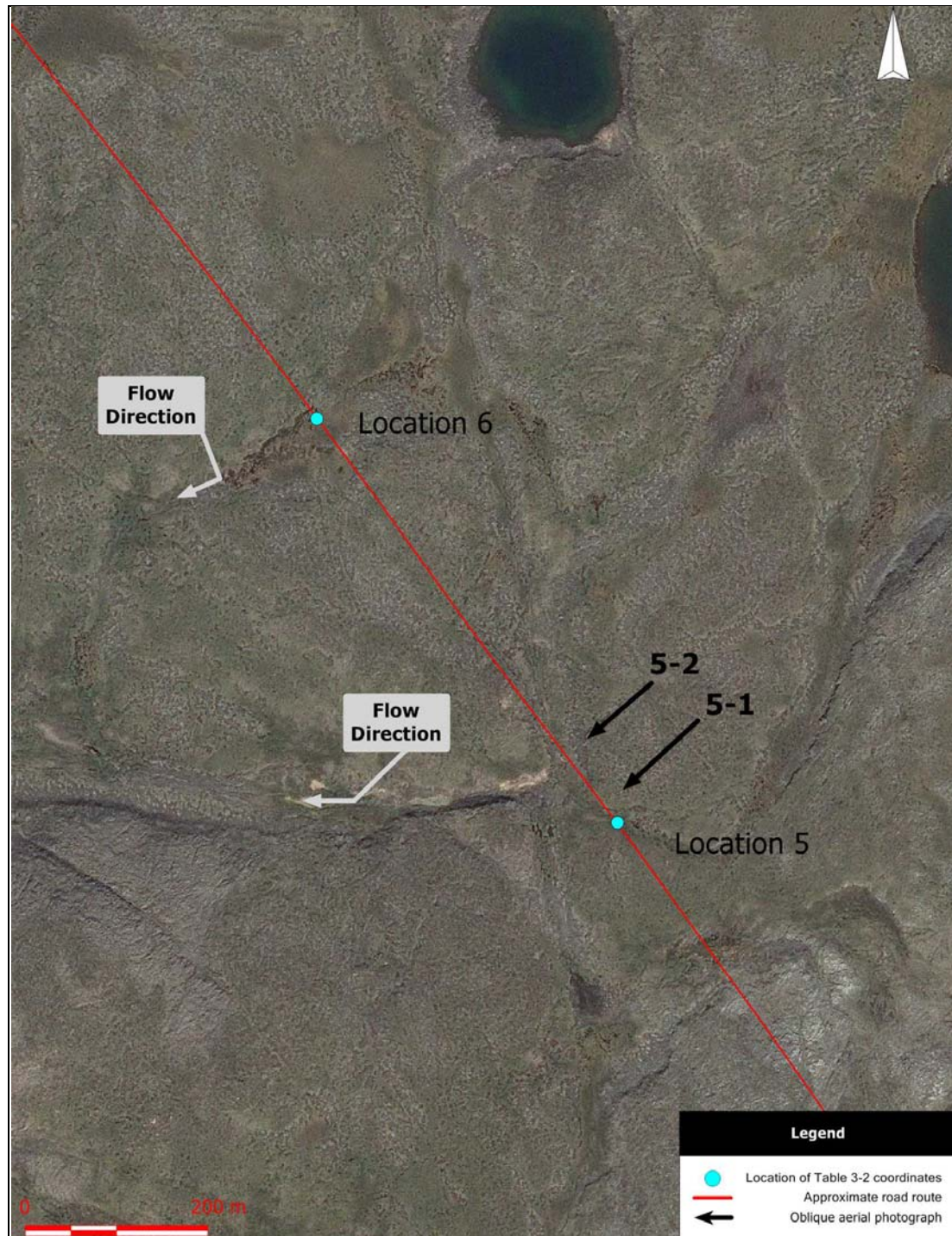


Location 3. Oblique aerial photograph 3-1.



Location 4. Oblique aerial photograph 4-1.





Locations 5 and 6. Aerial photograph (scale 1:5000) showing the approximate road route, the location of coordinates provided in Table 3-2, the flow direction, and the location of oblique aerial photographs.



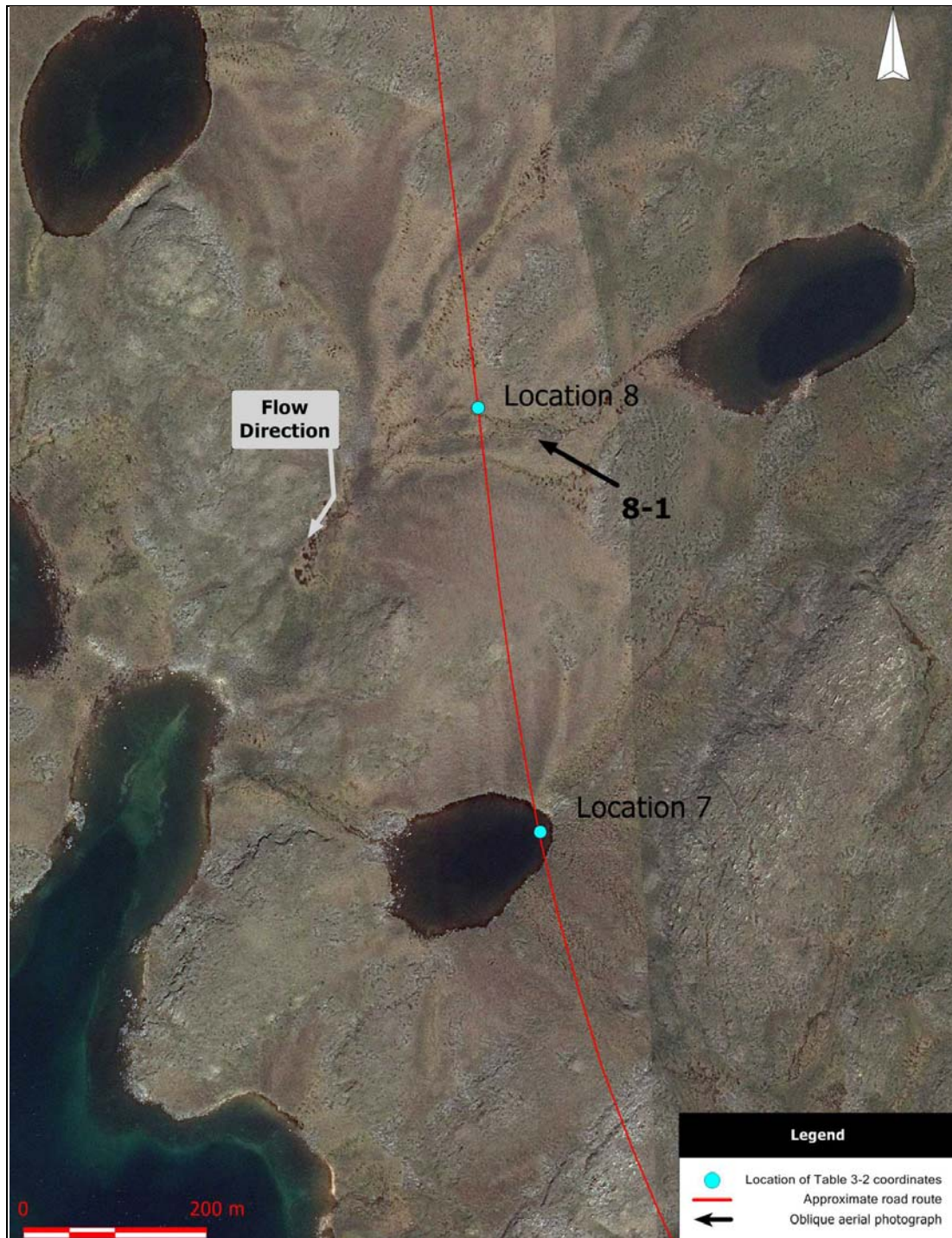


Location 5. Oblique aerial photograph 5-1.



Location 5. Oblique aerial photograph 5-2.



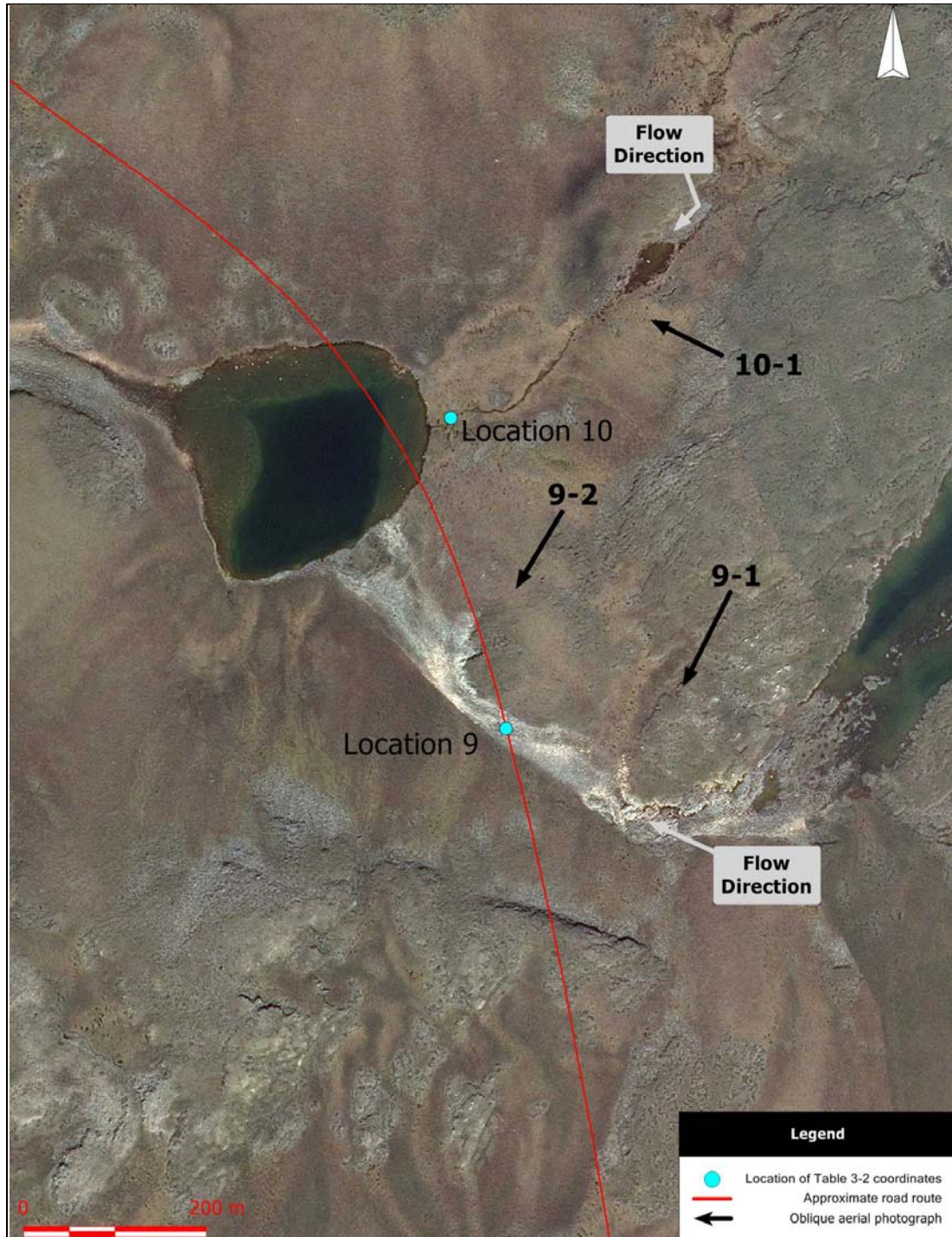


Locations 7 and 8. Aerial photograph (scale 1:5000) showing the approximate road route, the location of coordinates provided in Table 3-2, the flow direction, and the location of oblique aerial photographs. Lake at Location 7 will be avoided.



Location 8. Oblique aerial photograph 8-1.





Locations 9 and 10. Aerial photograph (scale 1:5000) showing the approximate road route, the location of coordinates provided in Table 3-2, the flow direction, and the location of oblique aerial photographs. Lake near Location 10 will be avoided.



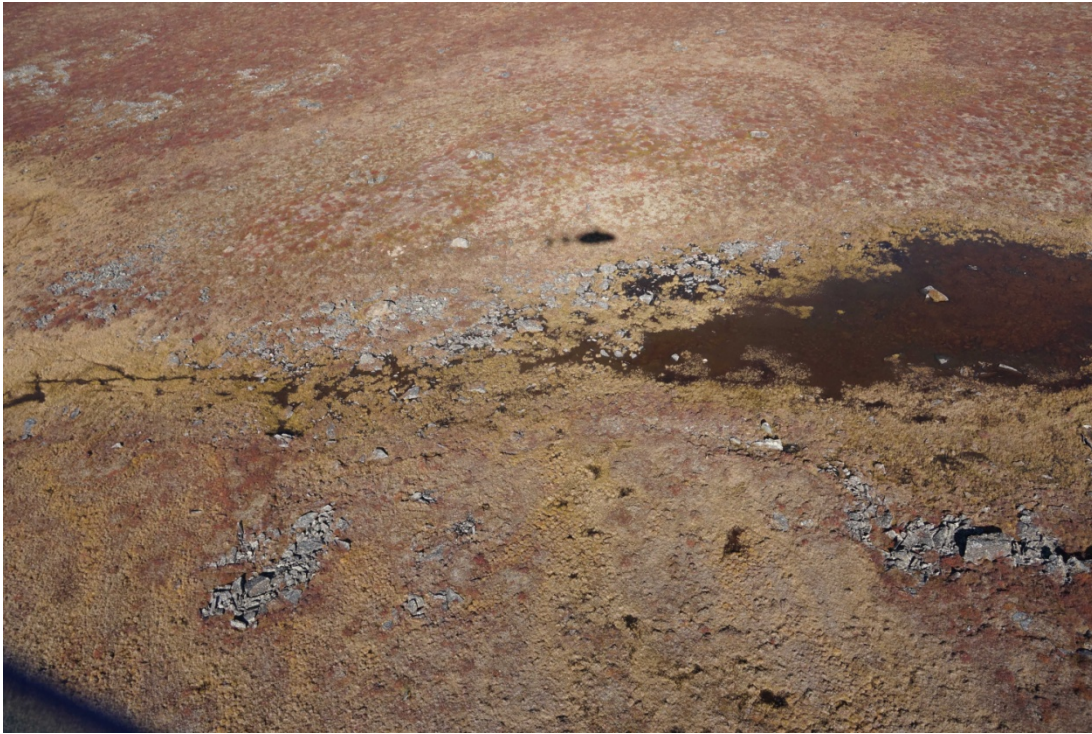


Location 9. Oblique aerial photograph 9-1.



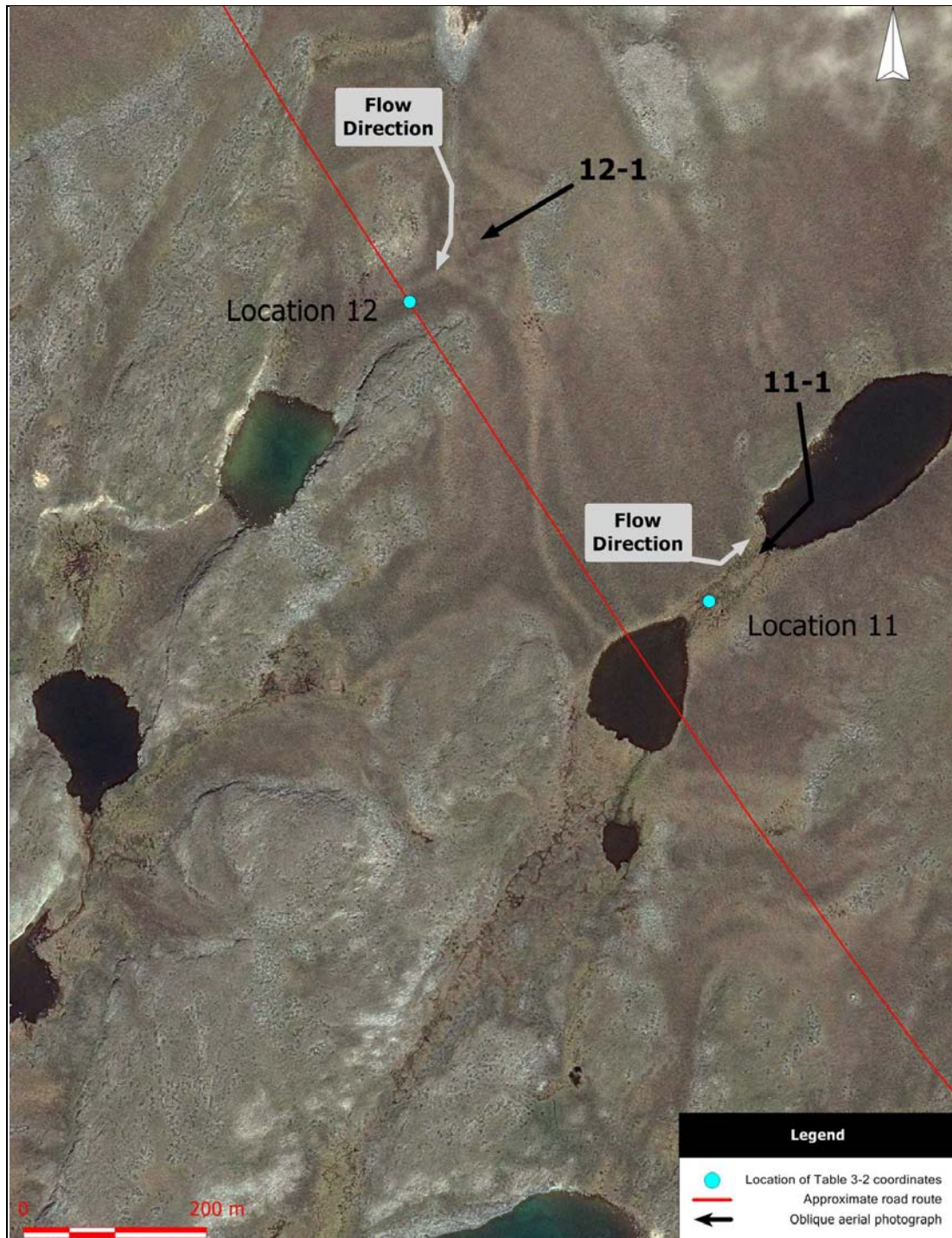
Location 9. Oblique aerial photograph 9-2.





Location 10. Oblique aerial photograph 10-1.





Locations 11 and 12. Aerial photograph (scale 1:5000) showing the approximate road route, the location of coordinates provided in Table 3-2, the flow direction, and the location of oblique aerial photographs. Lake near Location 11 will be avoided.