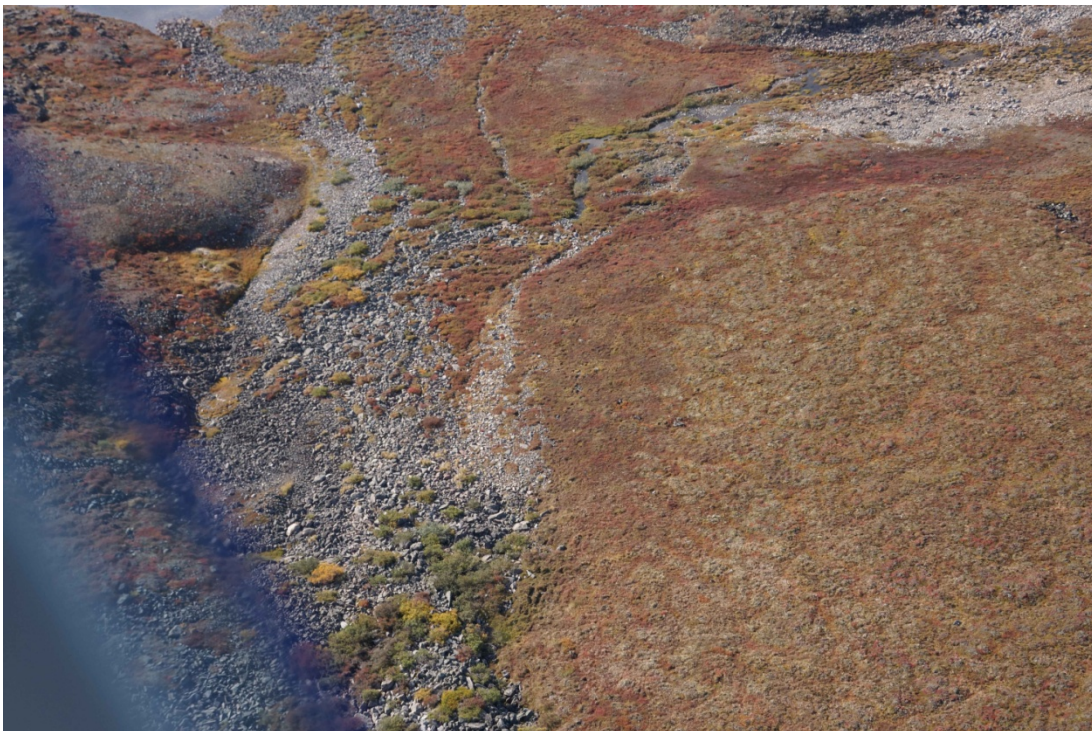




Location 16. Oblique aerial photograph 16-1.



Location 16. Oblique aerial photograph 16-2.



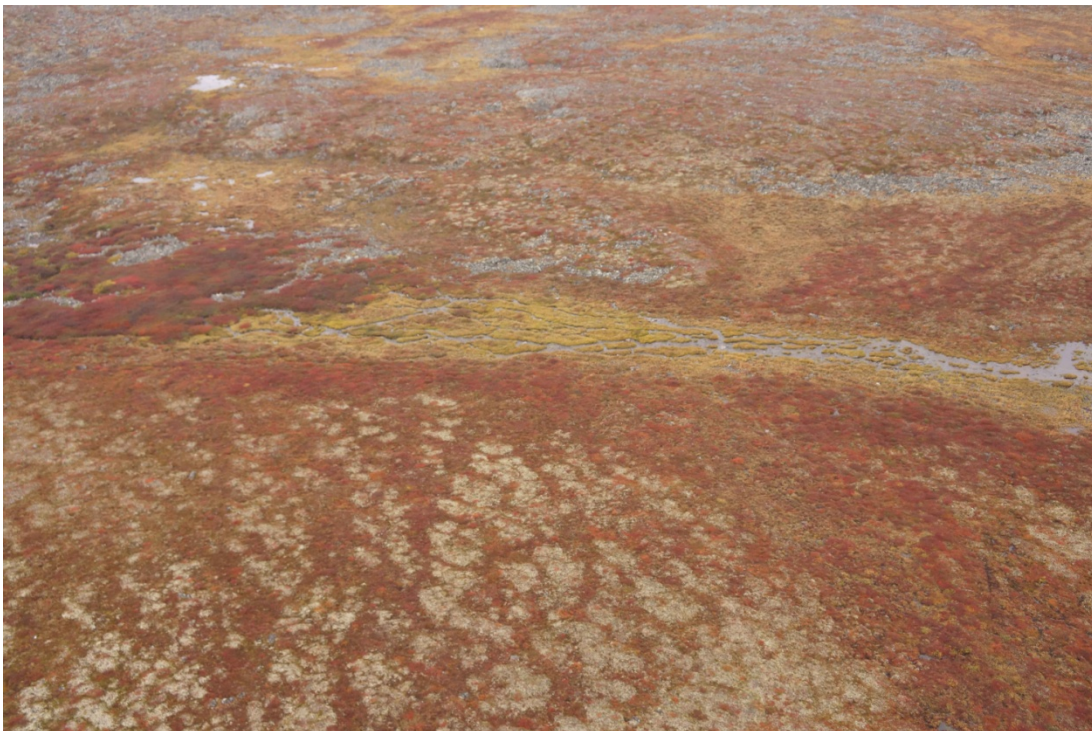


Location 17. Aerial photograph (scale 1:5000) showing the approximate road route, the location of coordinates provided in Table 3-2, the flow direction, and the location of oblique aerial photographs.





Location 17. Oblique aerial photograph 17-1.



Location 17. Oblique aerial photograph 17-2.



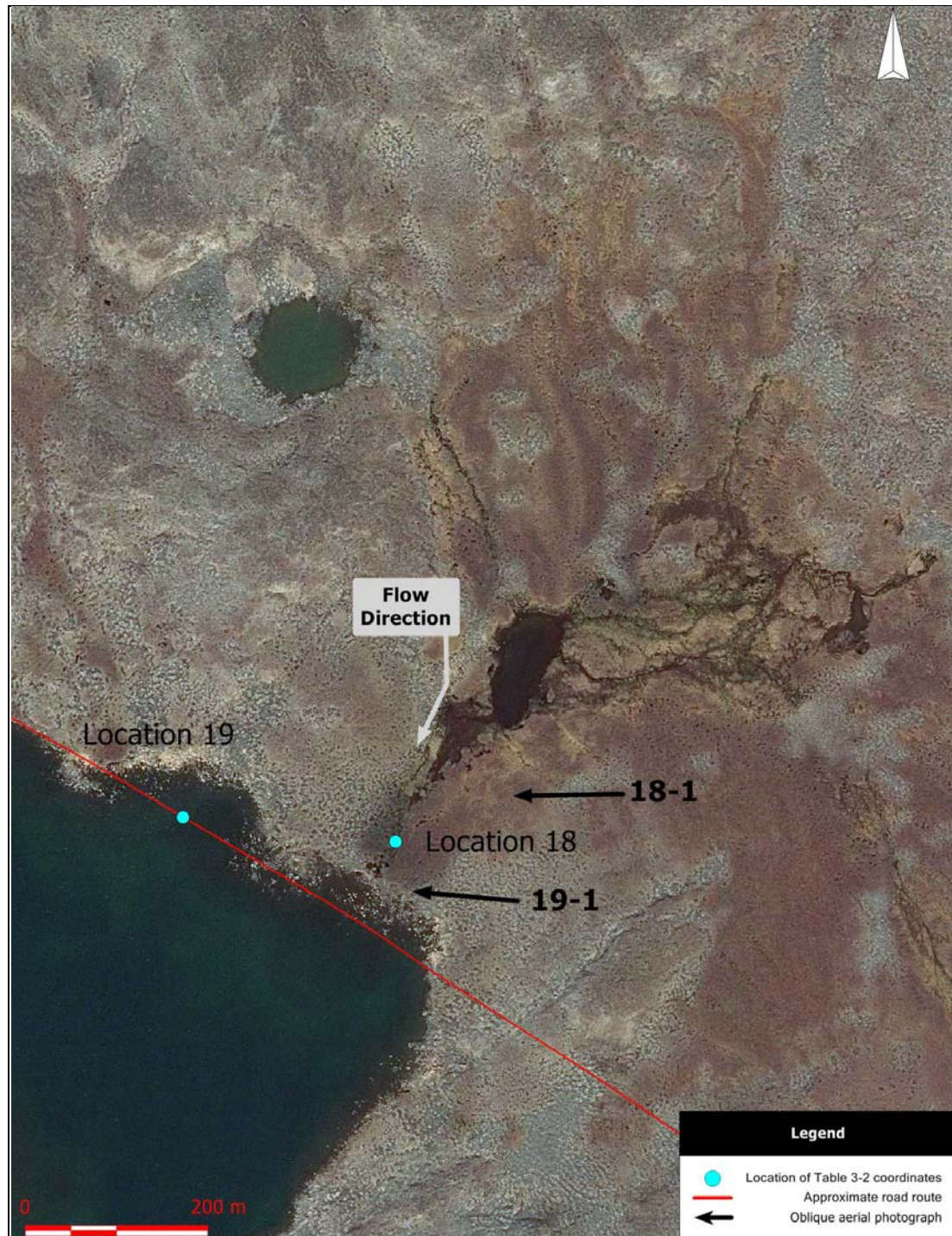


Location 17. Photograph from the ground. Near watercourse mouth and road crossing.



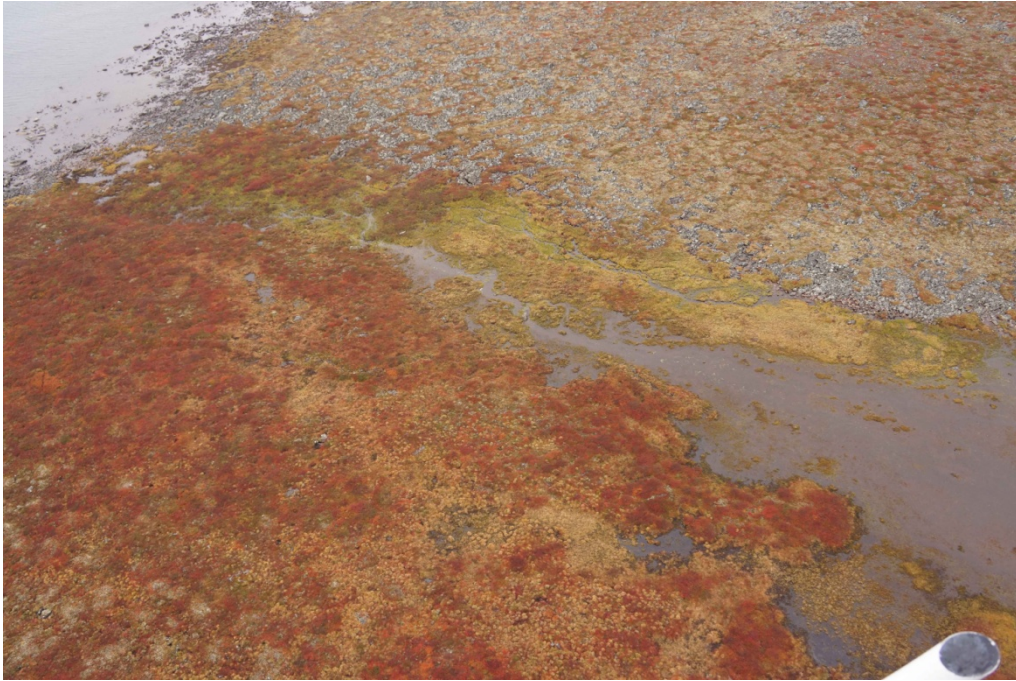
Location 17. Photograph from the ground. Upstream view approximately 200 m upstream of watercourse mouth.





Locations 18 and 19. Aerial photograph (scale 1:5000) showing the approximate road route, the location of coordinates provided in Table 3-2, the flow direction, and the location of oblique aerial photographs. Lake at Location 19 will be avoided.





Location 18. Oblique aerial photograph 18-1.



Location 18. Photograph from the ground. Upstream view approximately 100 m upstream of watercourse mouth.