



Location 18. Photograph from the ground. Approximately 100 m upstream of watercourse mouth.



Location 18. Photograph from the ground. Upstream view approximately 180 m upstream of watercourse mouth.





Location 19. Oblique aerial photograph 19-1.



Location 19. Photograph from the ground. Watercourse mouth.





Location 20. Aerial photograph (scale 1:5000) showing the approximate road route, the location of coordinates provided in Table 3-2, the flow direction, and the location of oblique aerial photographs. Lakes near Location 20 will be avoided.





Location 20. Oblique aerial photograph 20-1.

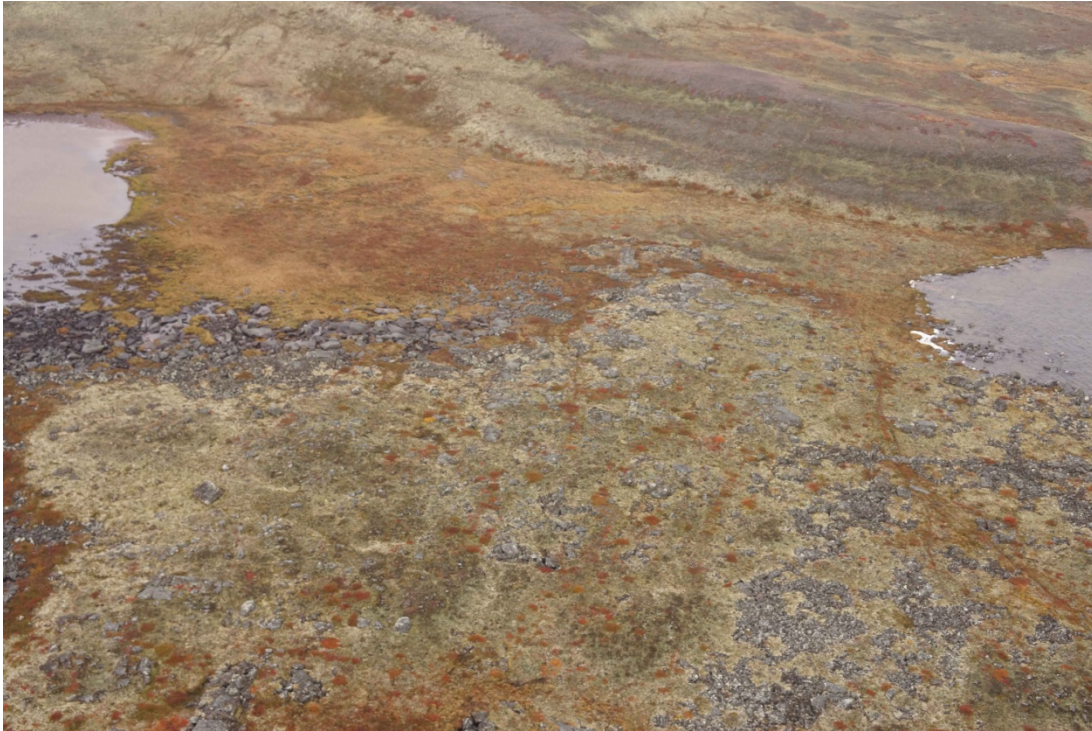


Location 20. Photograph from the ground. Note flow through narrows.



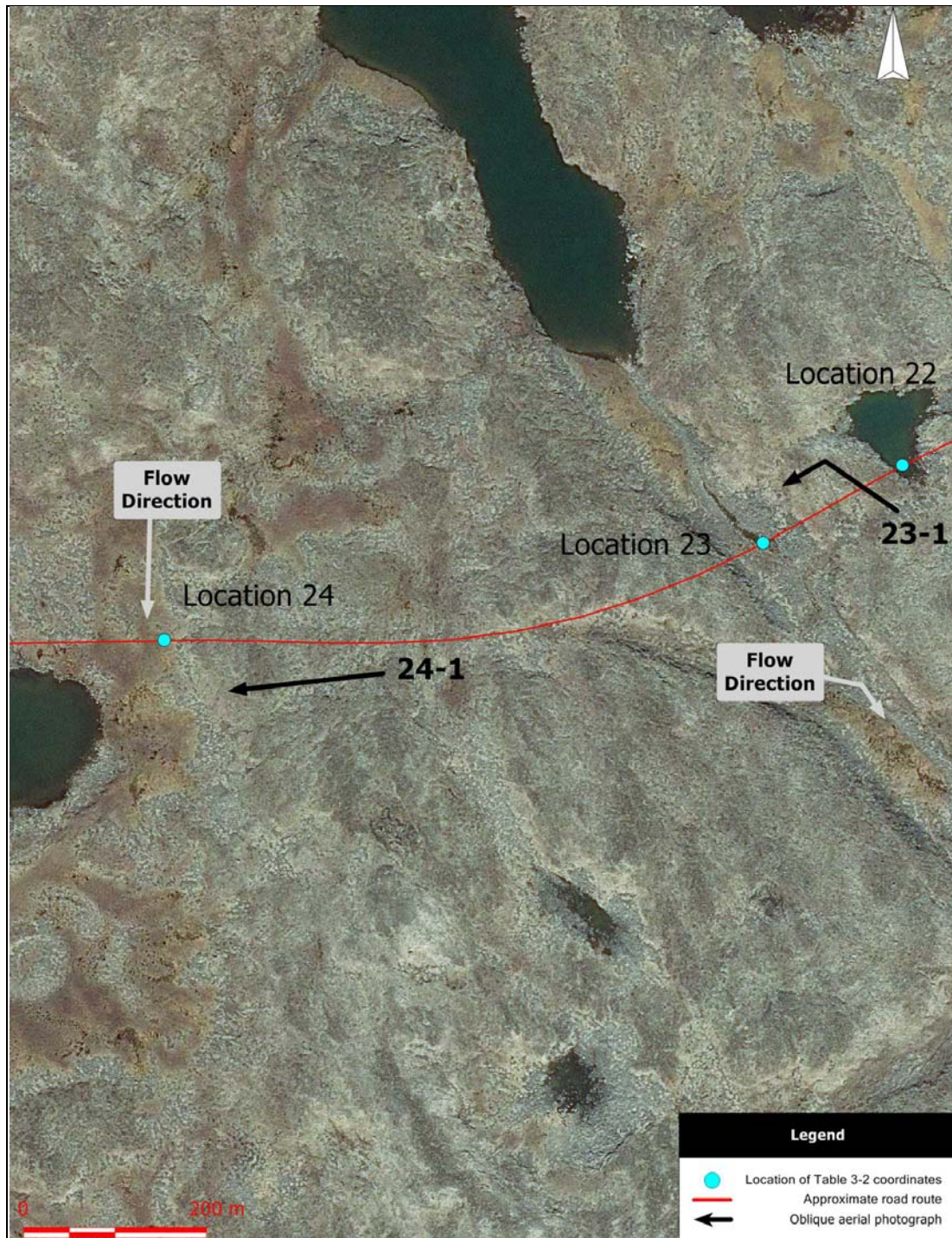


Location 21. Aerial photograph (scale 1:5000) showing the approximate road route, the location of coordinates provided in Table 3-2, the flow direction, and the location of oblique aerial photographs. Lake near Location 21 will be avoided.



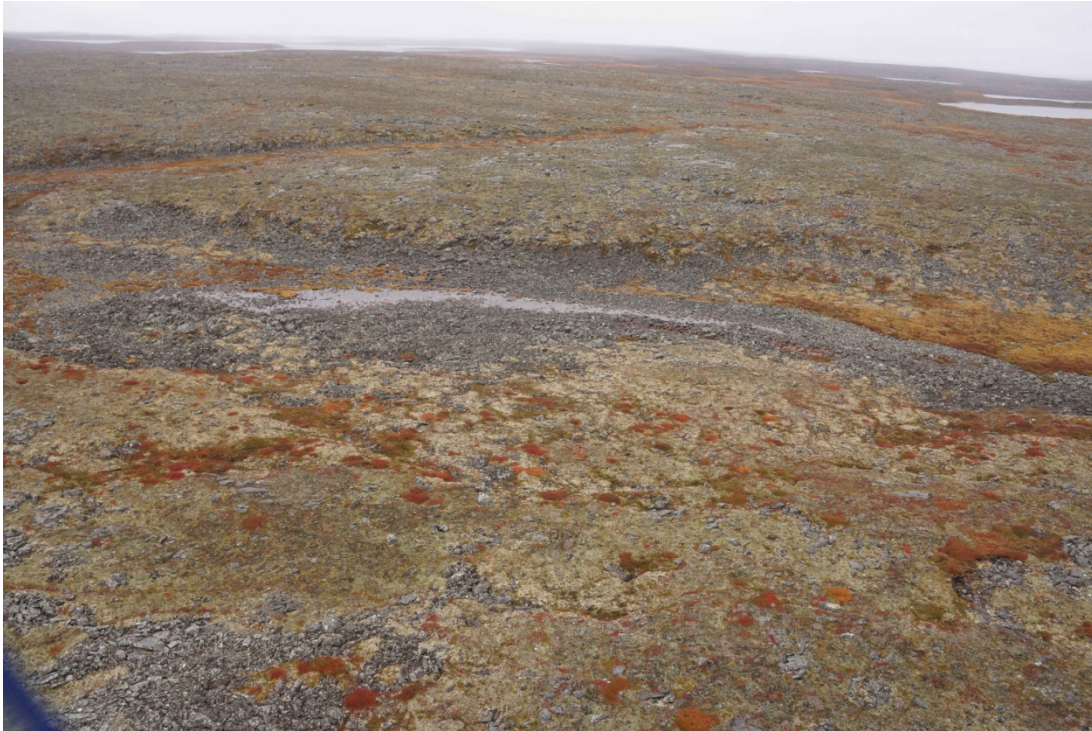
Location 21. Oblique aerial photograph 21-1.



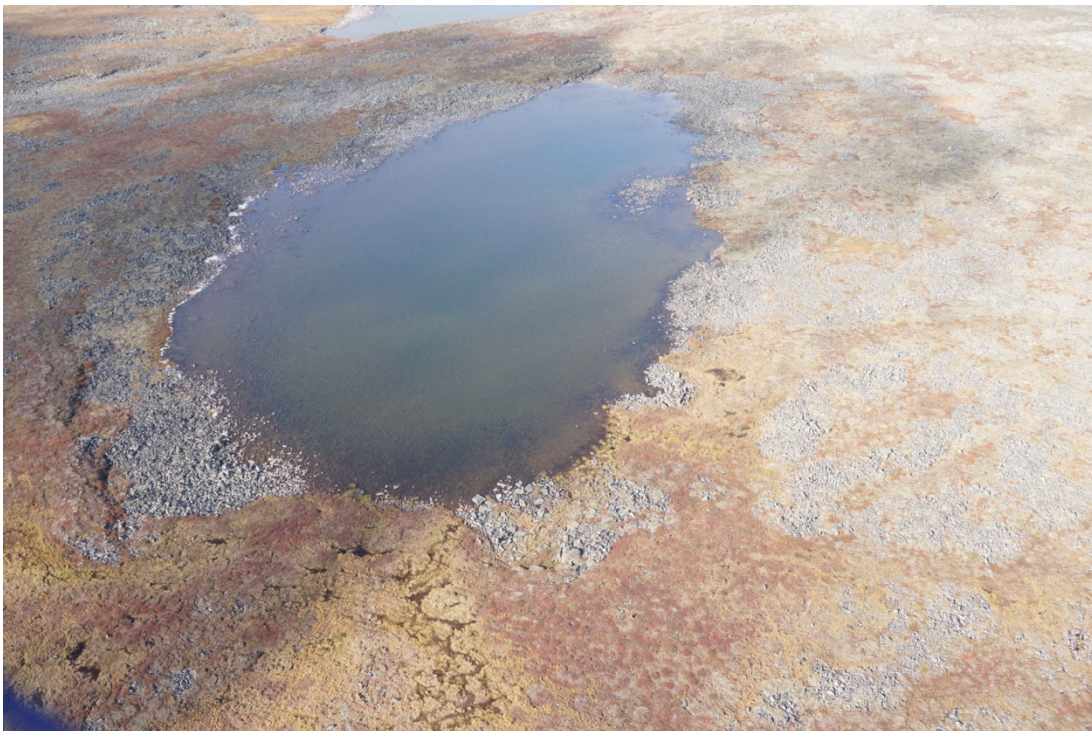


Locations 22, 23 and 24. Aerial photograph (scale 1:5000) showing the approximate road route, the location of coordinates provided in Table 3-2, the flow direction, and the location of oblique aerial photographs. Pond at Location 22 will be avoided.





Location 23. Oblique aerial photograph 23-1.



Location 24. Oblique aerial photograph 24-1.