

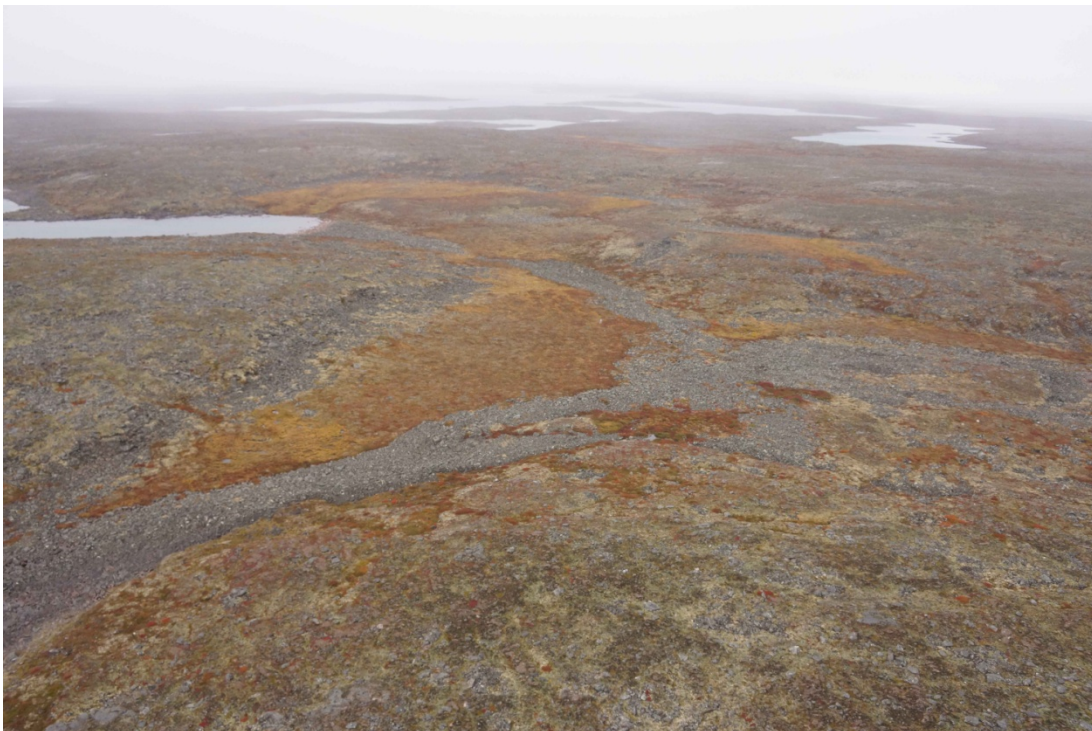


Locations 25 and 26. Aerial photograph (scale 1:5000) showing the approximate road route, the location of coordinates provided in Table 3-2, the flow direction, and the location of oblique aerial photographs. Lake at Location 25 will be avoided.



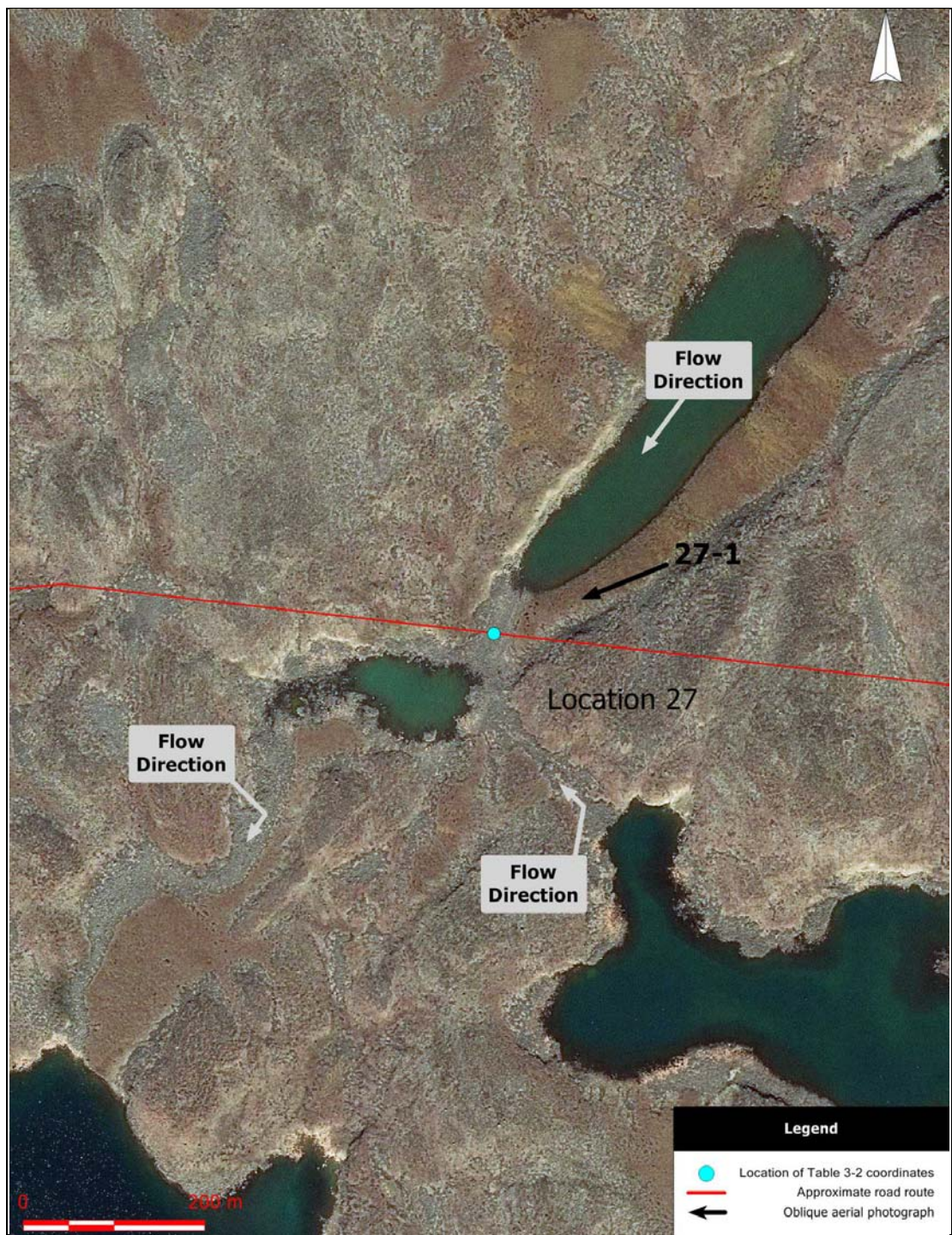


Location 25. Oblique aerial photograph 25-1.



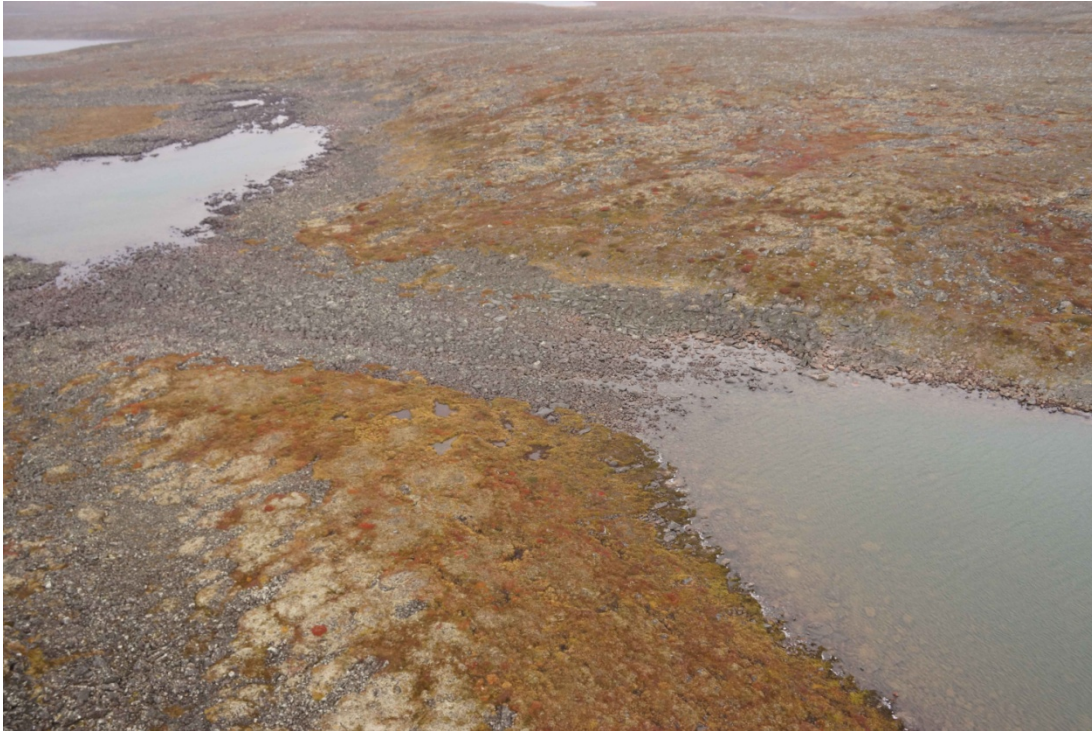
Location 26. Oblique aerial photograph 26-1.





Location 27. Aerial photograph (scale 1:5000) showing the approximate road route, the location of coordinates provided in Table 3-2, the flow direction, and the location of oblique aerial photographs.





Location 27. Oblique aerial photograph 27-1.



Location 28. Aerial photograph (scale 1:5000) showing the approximate road route, the location of coordinates provided in Table 3-2, the flow direction, and the location of oblique aerial photographs.





Location 28. Oblique aerial photograph 28-1.



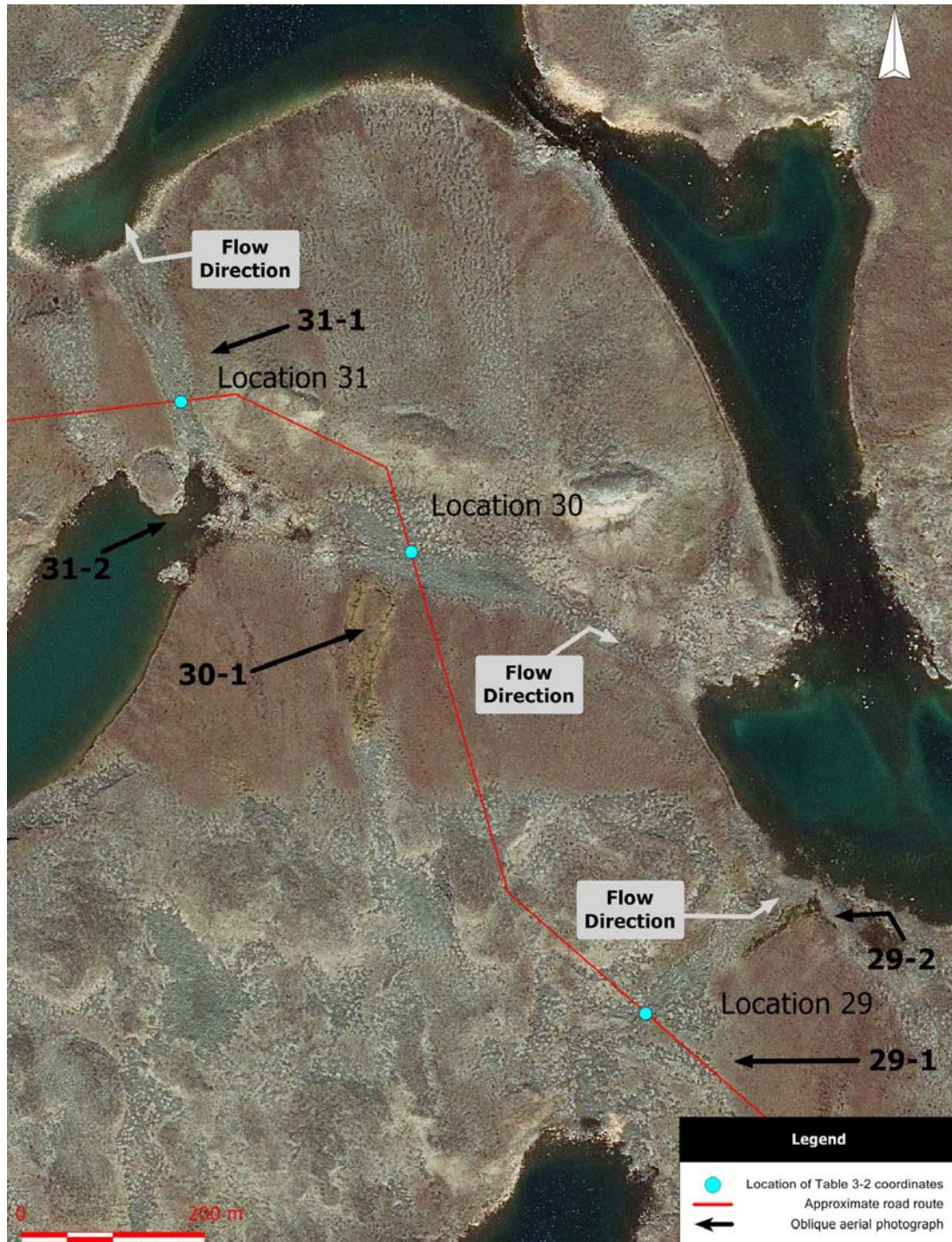
Location 28. Photograph from the ground. Downstream view through approximate crossing location.





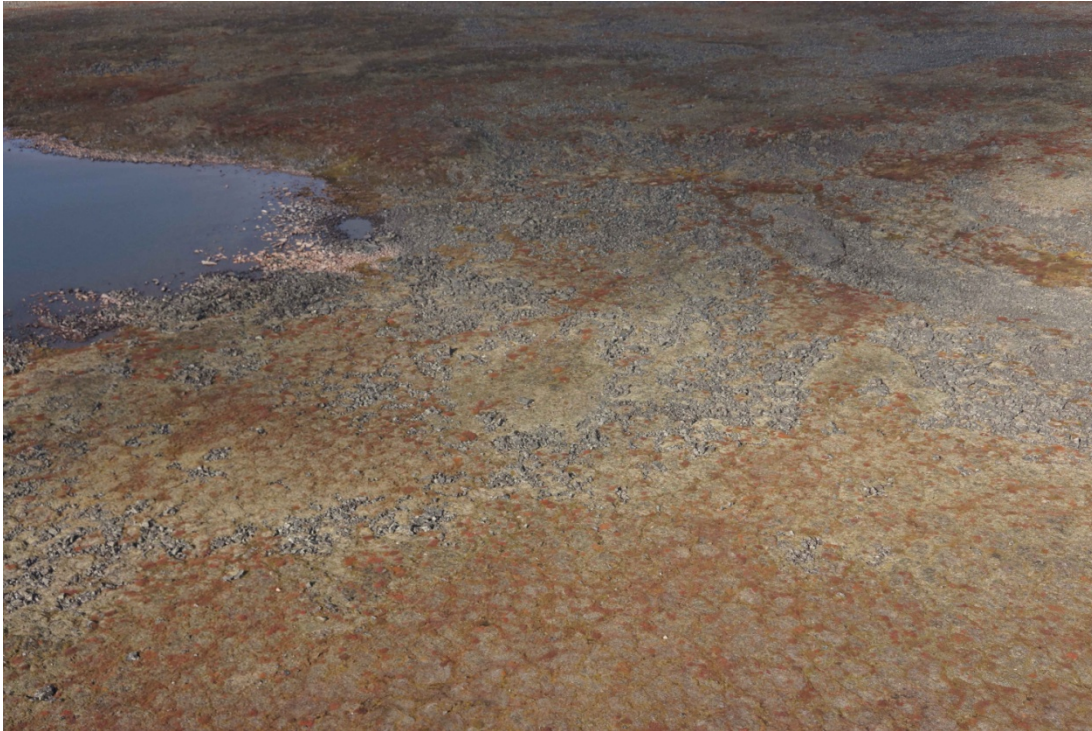
Location 28. Photograph from the ground. Upstream view from previous photograph location.



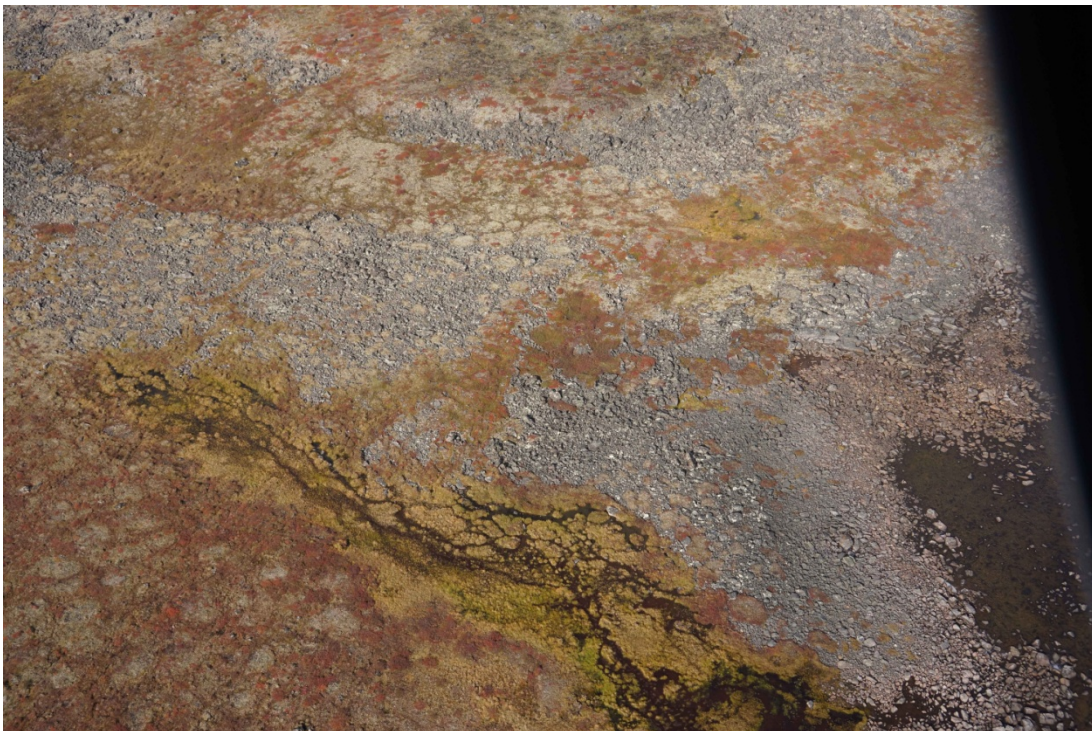


Locations 29, 30 and 31. Aerial photograph (scale 1:5000) showing the approximate road route, the location of coordinates provided in Table 3-2, the flow direction, and the location of oblique aerial photographs.





Location 29. Oblique aerial photograph 29-1.



Location 29. Oblique aerial photograph 29-2.