

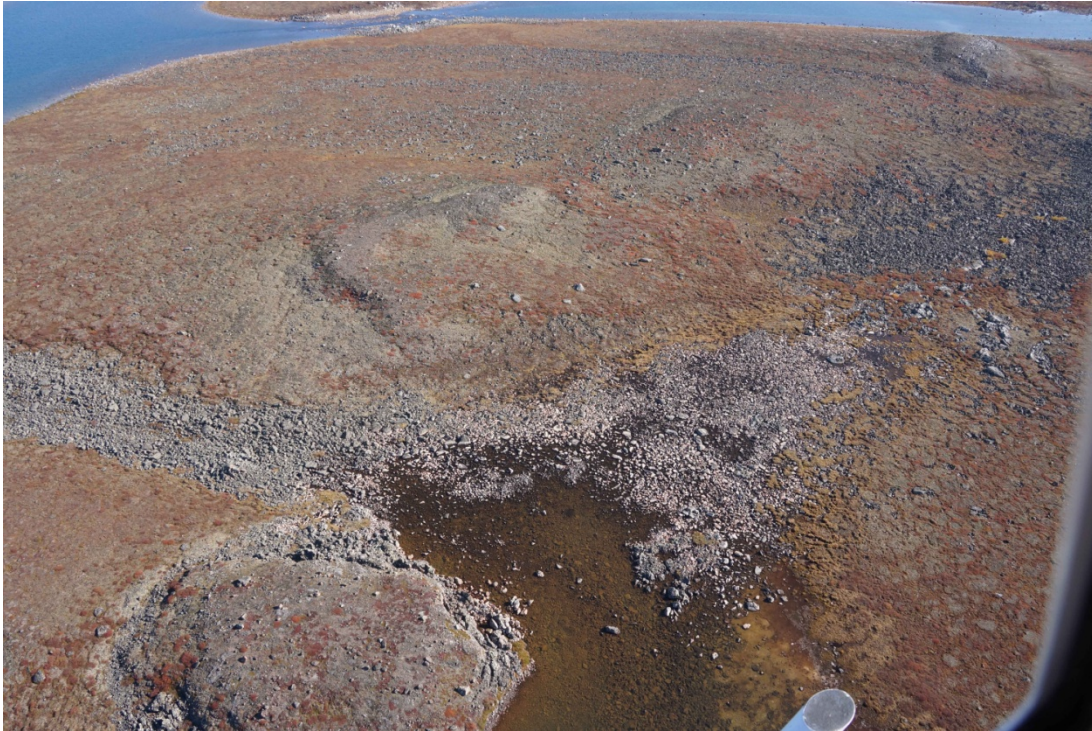


Location 30. Oblique aerial photograph 30-1.



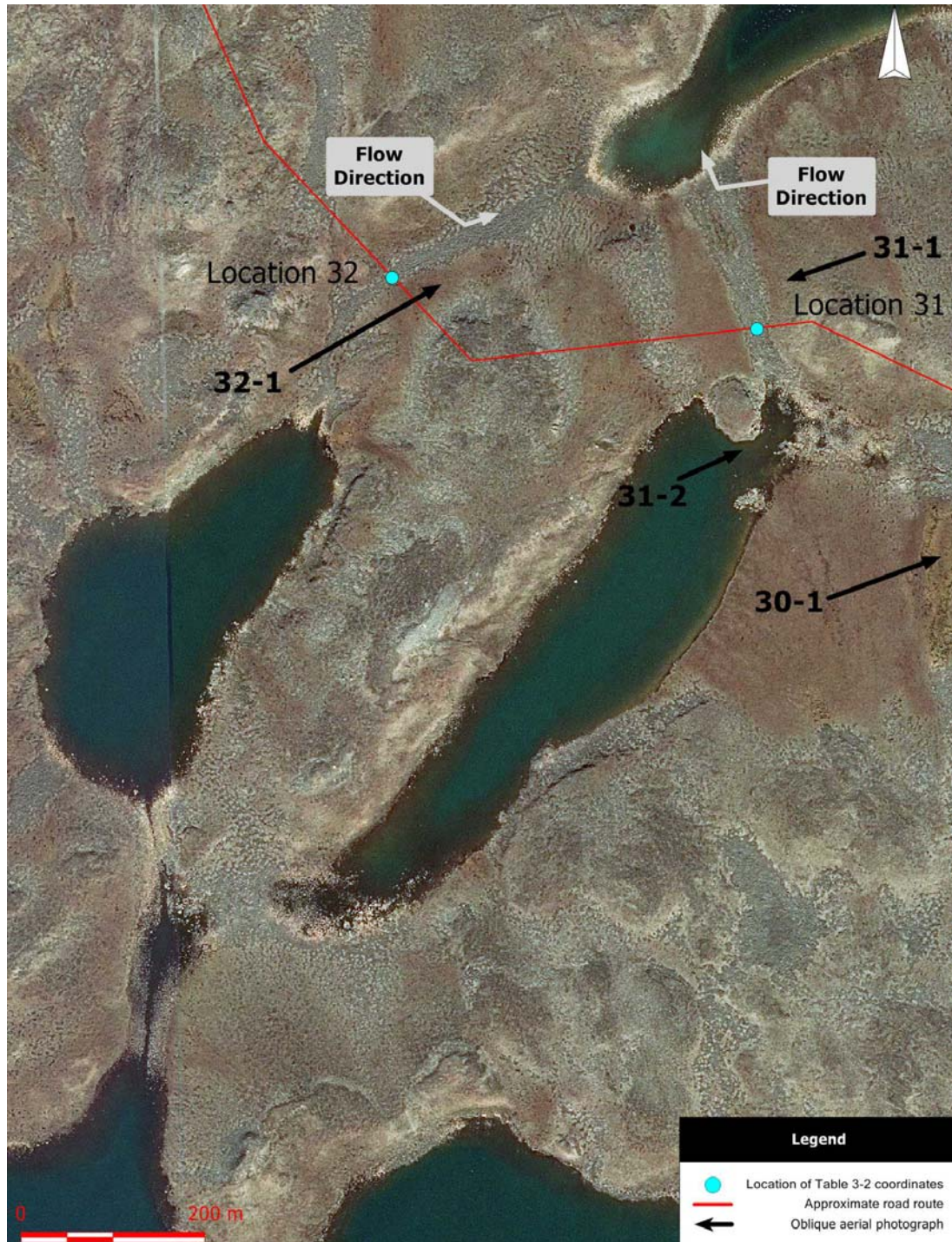
Location 31. Oblique aerial photograph 31-1.





Location 31. Oblique aerial photograph 31-2. Left is watercourse 31. Right is watercourse 30.





Location 32. Aerial photograph (scale 1:5000) showing the approximate road route, the location of coordinates provided in Table 3-2, the flow direction, and the location of oblique aerial photographs.





Location 32. Oblique aerial photograph 32-1.



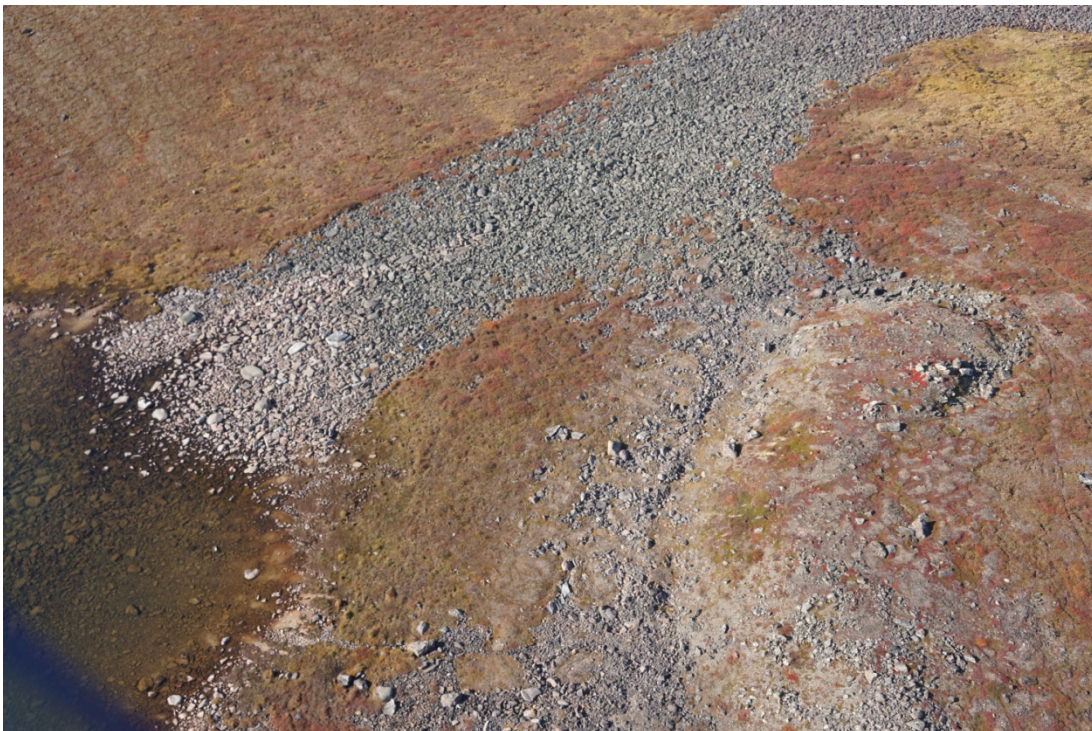


Location 33. Aerial photograph (scale 1:5000) showing the approximate road route, the location of coordinates provided in Table 3-2, the flow direction, and the location of oblique aerial photographs.





Location 33. Oblique aerial photograph 33-1.



Location 33. Oblique aerial photograph 33-2.



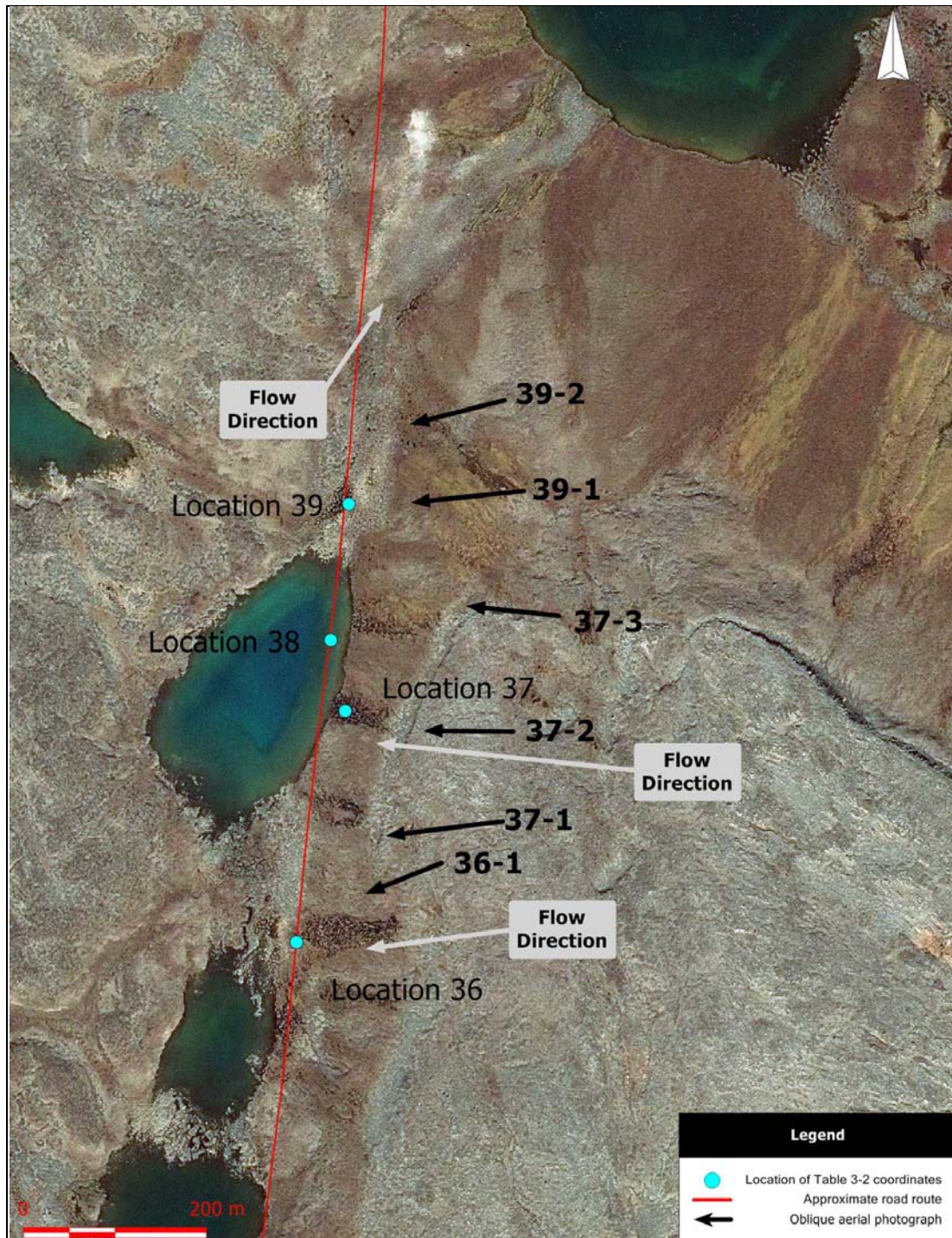


Locations 34 and 35. Aerial photograph (scale 1:5000) showing the approximate road route, the location of coordinates provided in Table 3-2, the flow direction, and the location of oblique aerial photographs. Lake at Location 34 will be avoided.



Locations 34 and 35. Oblique aerial photograph 35-1. Location 35 is the watercourses in foreground. Location 34 is the lake nearshore.





Locations 36, 37, 38 and 39. Aerial photograph (scale 1:5000) showing the approximate road route, the location of coordinates provided in Table 3-2, the flow direction, and the location of oblique aerial photographs. Lake at Location 38 will be avoided.