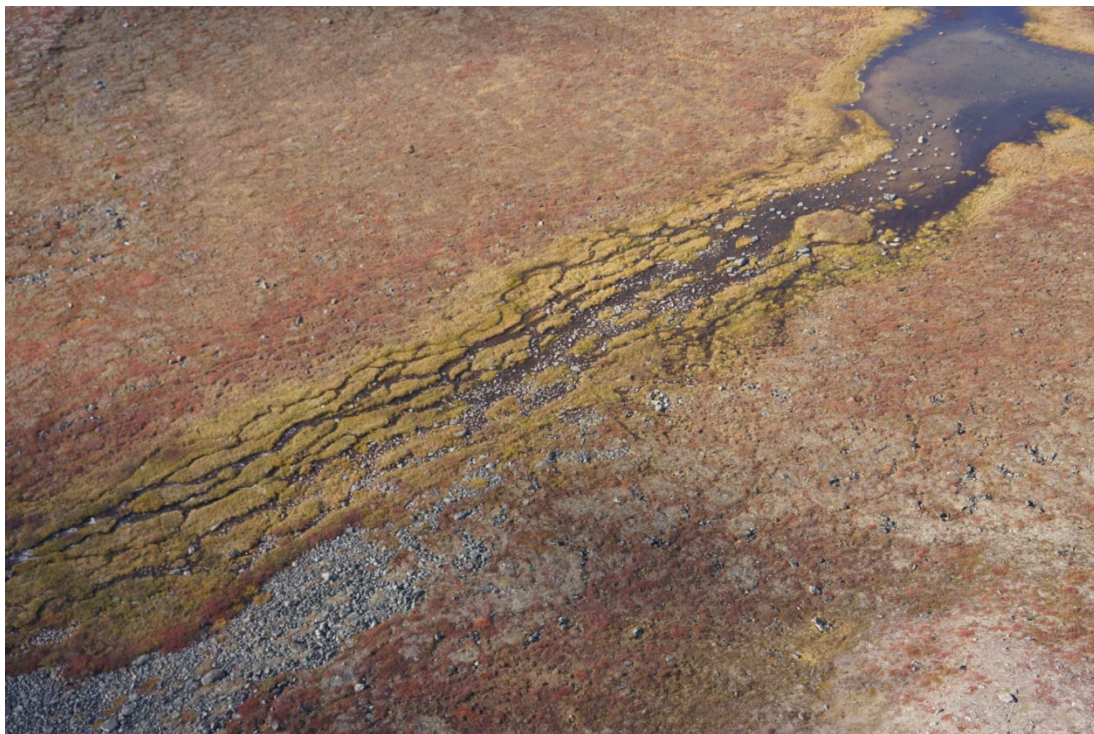


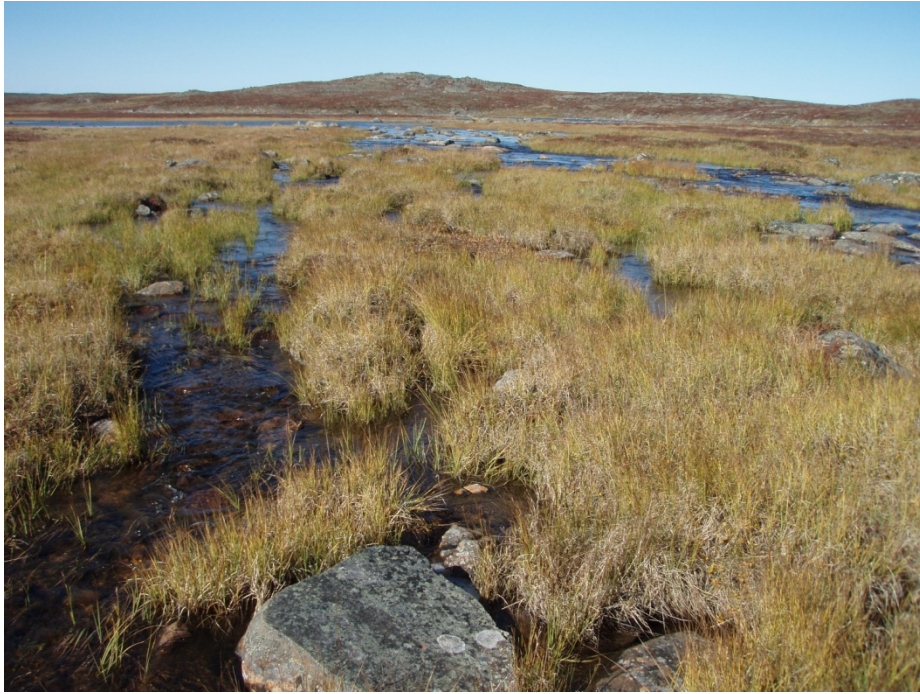


Location 40. Photograph from the ground. Downstream view of one channel from 280 m downstream from the approximate crossing location. Diffuse flow through vegetation.



Location 41. Oblique aerial photograph 41-1





Location 41. Photograph from the ground. Upstream view from 30 m downstream of the approximate road crossing location.



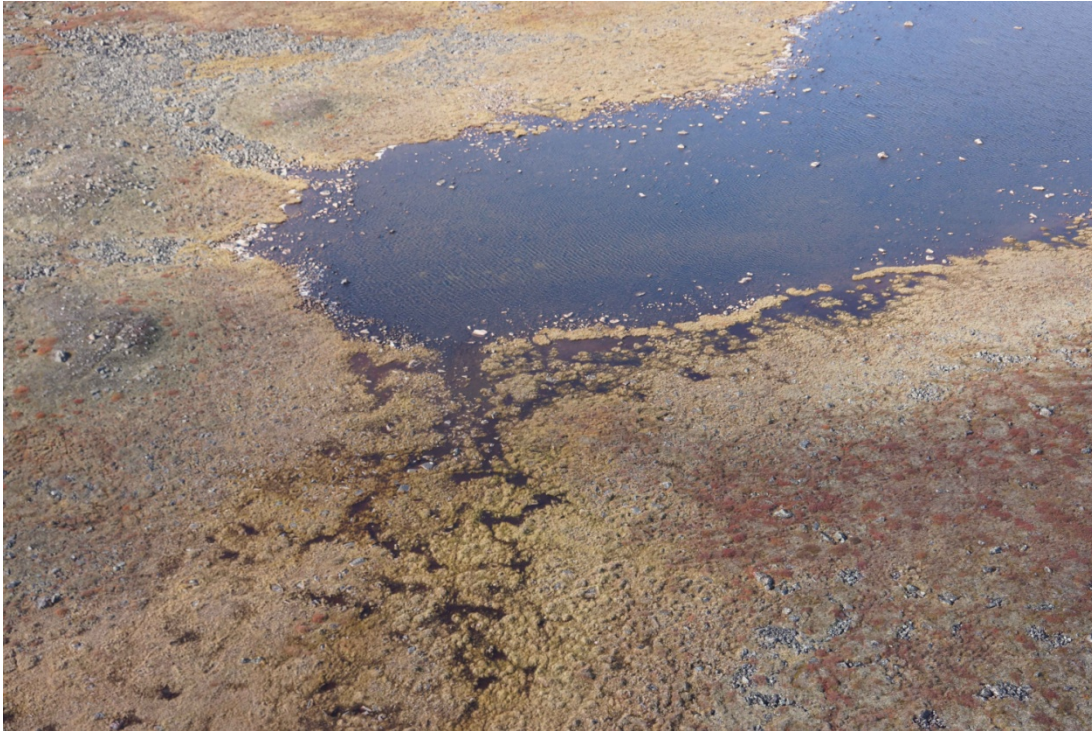
Location 41. Photograph from the ground. Upstream view from 30 m downstream of the approximate road crossing location.





Location 42. Aerial photograph (scale 1:5000) showing the approximate road route, the location of coordinates provided in Table 3-2, the flow direction, and the location of oblique aerial photographs.





Location 42. Oblique aerial photograph 42-1.





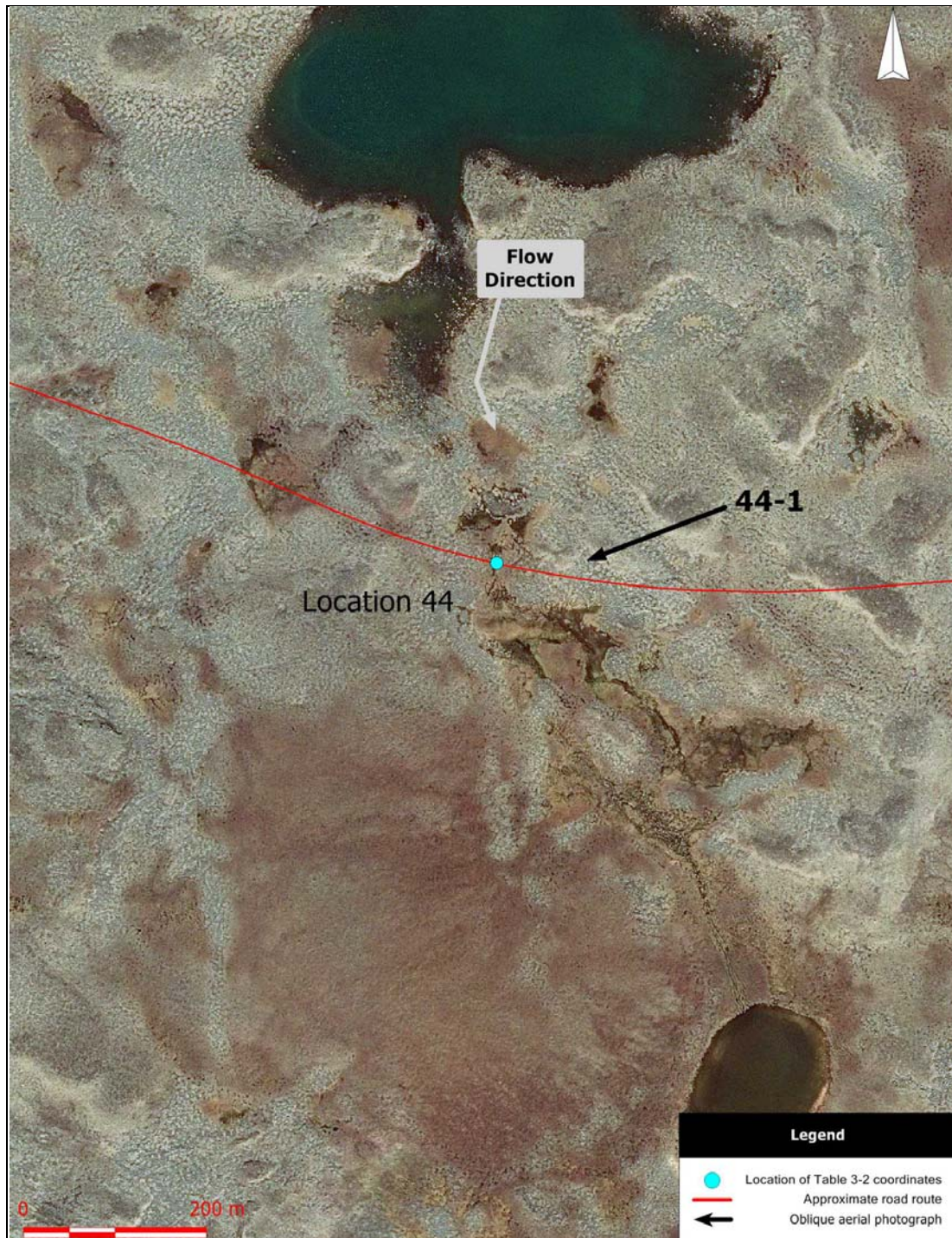
Location 43. Aerial photograph (scale 1:5000) showing the approximate road route, the location of coordinates provided in Table 3-2, the flow direction, and the location of oblique aerial photographs. Lake at Location 43 will be avoided.





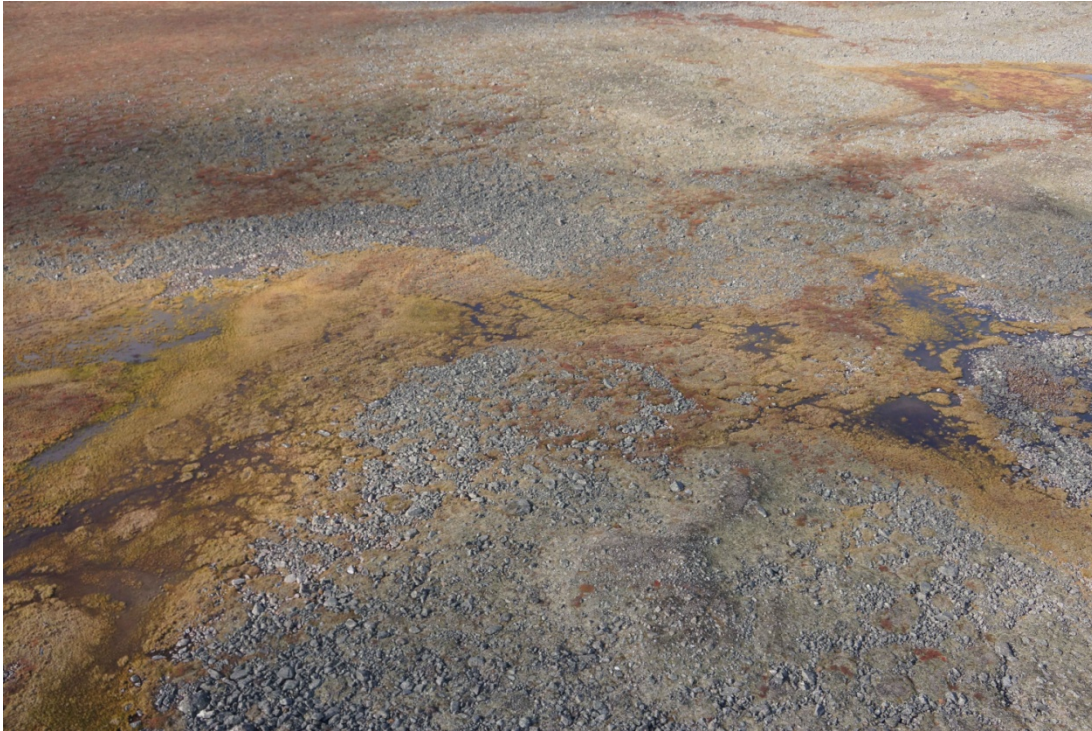
Location 43. Oblique aerial photograph 43-1.





Location 44. Aerial photograph (scale 1:5000) showing the approximate road route, the location of coordinates provided in Table 3-2, the flow direction, and the location of oblique aerial photographs.





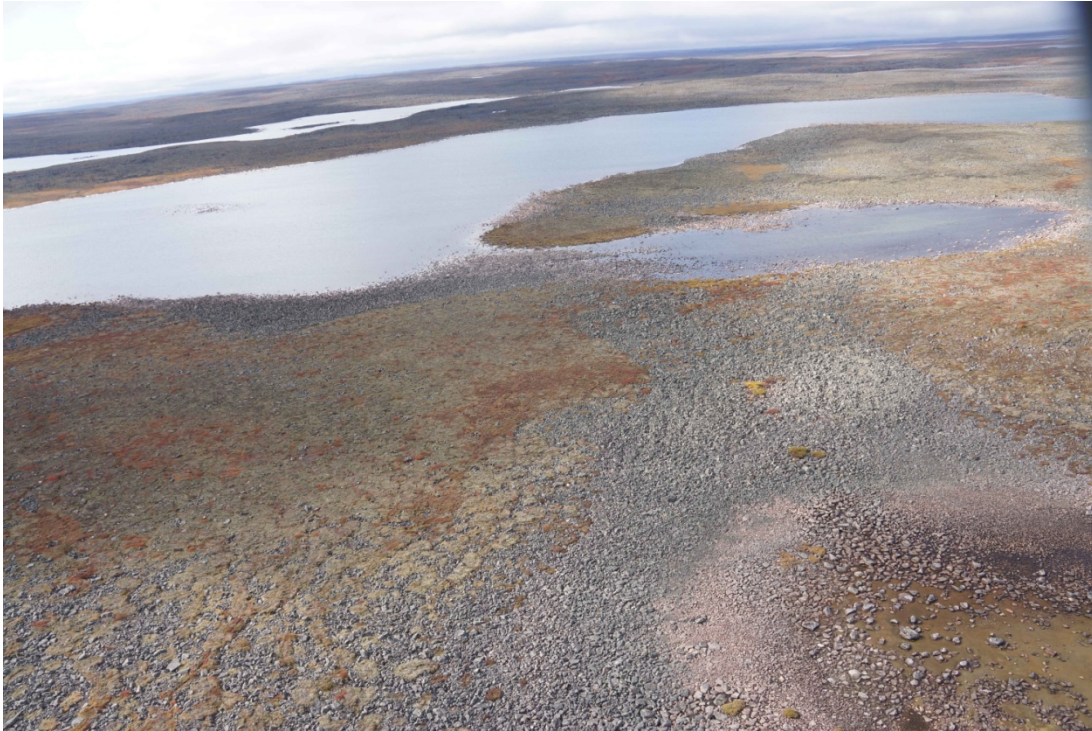
Location 44. Oblique aerial photograph 44-1.





Locations 45 and 46. Aerial photograph (scale 1:5000) showing the approximate road route, the location of coordinates provided in Table 3-2, the flow direction, and the location of oblique aerial photographs.





Location 45. Oblique aerial photograph 45-1.