



**TO** Sophia Granchinho – NIRB  
Karen Kharatyan – NWB

**DATE** June 22, 2017

**CC** Indigenous and Northern Affairs Canada

**FROM** Agnico Eagle

## **COMMITMENT 27 – ADDITIONAL DETAILS ON CONSULTATION EFFORTS FOR WHALE TAIL PIT**

---

### **Introduction**

During the Technical Meeting, held in Baker Lake, Nunavut on April 28 to May 2, 2017 Indigenous Northern Affairs Canada (INAC) requested additional detail on consultation efforts that Agnico Eagle Mines Limited (Agnico Eagle) undertook for the Environmental Impact Statement (EIS). Agnico Eagle is continually engaged in consultation and therefore Agnico Eagle committed to sharing Traditional Knowledge and IQ detailed meeting notes as well as other meeting notes where concerns were raised regarding the Whale Tail Pit project up to April 2017.

In addition, Agnico Eagle was requested to provide information on how the concerns were addressed and where information applies in the EIS. Information will be provided prior to final hearing.

### **Whale Tail Engagement Record**

Agnico Eagle's engagement efforts prior to 2016 are provided in the EIS, Volume 2, Appendix 2-G. This information is available on the public record through the NIRB and NWB public registries and has been provided to INAC. Additional information specific to engagement efforts and consultation as a result of the review process (i.e., through Information Requests and Technical Comments)<sup>1</sup> are also on the public record and available to INAC. It should be noted that the initial submission of the Whale Tail Project was made to the NIRB and NWB as an extension of the Meadowbank Mine as a result initial consultation efforts were undertaken as part of the ongoing operational consultation and engagement initiatives of that project. As an operational mine, Meadowbank records are structured for operational use, based on existing standards of operations and permitting requirements. While it is understood that the Whale Tail Project is a separate Project, the company cannot operate with Whale Tail as a totally separate entity and through consultation it has been noted that concerns are not Whale Tail specific as many community members see Whale Tail as an extension of an existing operation. For the purposes of this document, efforts have been made to only include engagement that was focussed primarily on Whale Tail and not the operation as a whole. Engagement activities are summarized in Table 1 and Appendix A provides notes and records of those meetings.

### **Whale Tail Consultation Concerns**

Table 2 provides a summary of topics raised during engagement and consultation from 2014 initiation of the project baseline data collection through 2016, as well as a description of how these concerns and questions were considered in the EIS. In addition, In Section 7 of the EIS, Table 7.3-1- Community Concerns and Requests for Mitigation Related to Traditional Land and Resource Use summarizes concerns expressed by community

---

<sup>1</sup> Technical Hearing Commitment #27 and INAC-TRC #13.



members, mitigations identified by Agnico Eagle and reference in the EIS for additional details. In general during engagement, most people were seeking clarity on project specifics rather than expressing a specific concern to proposed activities. Appendix A provides additional materials from 2016 engagement that has not yet been supplied to INAC.



**Table 1: Engagement Efforts in 2016 Related to the Whale Tail Project**

| Date      | Type of Communication | Location   | Title                                     | Description  | Stakeholders     | Staff Members |
|-----------|-----------------------|------------|---|--|------------------|---------------|
| 02-Feb-16 | Meeting               | Baker Lake | Workshop - Baker Lake Women's Focus Group | Facilitator: Ryan Vanengen<br>Participants: 8 women at the Igloo<br>Objective/Focus: Meadowbank, health and wellbeing, future of Meadowbank (Amaruq)<br>Results: Well received   | Baker Lake Women | Ryan Vanengen |
| 03-Feb-16 | Meeting               | Baker Lake | TK/IQ Whale Tail - HTO Meeting            | Facilitator: Ryan Vanengen<br>Participants: 6 HTO members attended<br>Objective/Focus: Meadowbank wildlife monitoring (Jamie K in Inuktitut), Amaruq Road construction, impact assessment (archaeology sites on road), Whale Tail Pit, fisheries offsetting concepts.  | Baker Lake HTO   | Ryan Vanengen |
| 03-Feb-16 | Meeting               | Baker Lake | Workshop - Baker Lake Youth Focus Group   | Facilitator: Ryan Vanengen<br>Objective/Focus: This focus group is part of the Agnico-Eagle socio-economic baseline work for the Amaruq Road project. We want to talk to people who in the next 1-5 years will be looking for work and developing careers. The intent is to get a dialogue going and to get input from youth as to what they would like to see regarding opportunities, training, or information about work in the mining and related industries. This session is less about traditional knowledge than about communications; how to communicate with youth, and to get a group of people who could provide a stepping stone into the school culture in Baker. | Baker Lake Youth | Ryan Vanengen |



**Table 1: Engagement Efforts in 2016 Related to the Whale Tail Project**

| Date      | Type of Communication | Location   | Title   | Description  | Stakeholders  | Staff Members   |
|-----------|-----------------------|------------|---|--|---|---|
| 04-Feb-16 | Meeting               | Baker Lake | TK./IQ Whale Tail - Elders Workshop                       | Facilitator: Ryan Vanengen<br>Participants: 12 elders and 1 youth attended<br>Objective/Focus: Amaruq Access Road construction, impact assessment (archaeology sites on road), Meadowbank Future and Whale Tail Pit, Wildlife and traditional land use around Whale Tail Pit and Amaruq road, hunting, fishing, water quality, fisheries offsetting concepts<br>Results: Highly productive and well received meeting   | Baker Lake Elders   | Ryan Vanengen   |
| 04-Feb-16 | Meeting               | Baker Lake | Workshop - Community Land and Resources Committee (CLARC) | Facilitator: Ryan Vanengen<br>Participants: 4 CLARC representatives. No KIA representative present<br>Objective/Focus: Amaruq Access Road Construction, impact assessment (archaeology sites on road), and dust. In this session, we did not get too much traditional knowledge work at all. This session became a vehicle for presenting a list of concerns from the HTO (via CLARC) to Ryan V. We did not have the chance to even ask any of the questions outlined. | Baker Lake Community Land and Resources Committee   | Ryan Vanengen   |
| 18-Mar-16 | Meeting               | Baker Lake | Q2 2016 - Community Liaison Committee Meeting             | Participants: Karen Yip, HR (Louise Garon, Luc Chouinard, Olivia Tagalik) and Environmental Dept (Robin Allard) attended<br>Objective/Focus: Amaruq Exploration project, Career development opportunities and support program, environment (Dust on the road was brought up by HTO), community relation (hamlet council communication, wellness report & Implementation plan, community investment fund, youth mentorship program, TASK Week, Festival by the lake).   | Meadowbank Community Liaison Committee (Agnico Eagle, Hamlet, CLARC, Community Health Rep, RCMP, Elders, HTO, Youth, Education (DEA and NAC)) | Karen Yip<br>Louise Garon<br>Luc Choinard<br>Olivia Tagalik<br>Robin Allard |



**Table 1: Engagement Efforts in 2016 Related to the Whale Tail Project**

| Date      | Type of Communication | Location           | Title  | Description  | Stakeholders  | Staff Members   |
|-----------|-----------------------|--------------------|--|--|---|---|
| 06-Jun-16 | Regulatory            | Rankin Inlet       | Rankin Inlet FEIS Amendment Community Consultation           | Facilitator: Stephane Robert, Pujjuut Kusugak and Selma Eccles.<br>Participants: 29 persons attended the meeting<br>Objective/Focus: Exploration, Amaruq, Hovercraft.<br>Questions asked/ppt presentation are provided in the document section<br>Results: It went well. No special concerns were raised | Rankin Inlet Public   | Stéphane Robert<br>Pujjuut Kusugak<br>Selma Eccles                |
| 07-Jun-16 | Meeting               | Baker Lake         | Baker Lake Community Presentation: Amaruq Whale Tail Project | Facilitator: Stephane Robert<br>Participants: 92 people attended.<br>Objective/Focus: Exploration and Amaruq Whale Tail pit project. Presentation went well and there were no questions related to dust.   | Baker Lake Public   | Stéphane Robert   |
| 01-Sep-16 | Meeting               | Meadowbank         | Baker Lake - CLC Meeting                                     | Baker Lake-CLC Meeting   | Meadowbank Community Liaison Committee (Agnico Eagle, Mayor, Hamlet, CLARC, Community Health Rep, RCMP, Elders, HTO, Youth) | Karen Yip<br>Louise Garon<br>Robin Allard<br>Maxime St-Laurent    |
| 24-Oct-16 | Public Meeting        | Chesterfield Inlet | 2016 Q4: Chesterfield Inlet - IIBA/Whale Tail Open House     | Objective/Focus:<br>IIBA employment/labour process information<br>Business opportunities/prequalification information<br>Environment/regulatory Whale Tail pit information<br>Open house format  | Chesterfield Inlet Public   | Jamie Quesnel<br>Manon Turmel<br>Pujjuut Kusugak<br>Ryan Vanengen |



**Table 1: Engagement Efforts in 2016 Related to the Whale Tail Project**

| Date      | Type of Communication | Location      | Title   | Description   | Stakeholders         | Staff Members  |
|-----------|-----------------------|---------------|---|---|----------------------|--|
| 25-Oct-16 | Public Meeting        | Baker Lake    | 2016 Q4: Baker Lake - IIBA/Whale Tail Open House    | Objective/Focus:<br>IIBA employment/labour process information<br>Business opportunities/prequalification information<br>Environment/regulatory Whale Tail pit information<br>Open house format | Baker Lake Public    | Candace Ramcharan<br>Jamie Quesnel<br>Manon Turmel<br>Ryan Vanengen                                    |
| 26-Oct-16 | Public Meeting        | Rankin Inlet  | 2016 Q4: Rankin Inlet - IIBA/Whale Tail Open House  | Objective/Focus:<br>IIBA employment/labour process information<br>Business opportunities/prequalification information<br>Environment/regulatory Whale Tail pit information<br>Open house format | Rankin Inlet Public  | Candace Ramcharan<br>Jamie Quesnel<br>Manon Turmel<br>Pujjuut Kusugak<br>Ryan Vanengen<br>Selma Eccles |
| 01-Nov-16 | Public Meeting        | Naujaat       | 2016 Q4: Naujaat - IIBA/Whale Tail Open House       | Objective/Focus:<br>IIBA employment/labour process information<br>Business opportunities/prequalification information<br>Environment/regulatory Whale Tail pit information<br>Open house format | Naujaat Public       | Courtney Squires<br>Karen Yip<br>Manon Turmel<br>Stéphane Robert                                       |
| 02-Nov-16 | Public Meeting        | Coral Harbour | 2016 Q4: Coral Harbour - IIBA/Whale Tail Open House | Objective/Focus:<br>IIBA employment/labour process information<br>Business opportunities/prequalification information<br>Environment/regulatory Whale Tail pit information<br>Open house format | Coral Harbour Public | Courtney Squires<br>Karen Yip<br>Manon Turmel<br>Stéphane Robert                                       |
| 03-Nov-16 | Public Meeting        | Whale Cove    | 2016 Q4: Whale Cove - IIBA/Whale Tail Open House    | Objective/Focus:<br>IIBA employment/labour process information<br>Business opportunities/prequalification information<br>Environment/regulatory Whale Tail pit information<br>Open house format | Whale Cove Public    | Manon Turmel<br>Pujjuut Kusugak<br>Stéphane Robert   |



**Table 1: Engagement Efforts in 2016 Related to the Whale Tail Project**

| Date       | Type of Communication | Location   | Title                | Description  | Stakeholders      | Staff Members                |
|------------|-----------------------|------------|----------------------|--|-------------------|------------------------------|
| 20-04-2017 | Public Meeting        | Baker Lake | Open Door Baker Lake | Objective/Focus:<br>IIBA employment/labour process information<br>Business opportunities/prequalification information<br>Whale Tail Pit information<br>Open floor for comments/questions | Baker Lake Public | Suzanne Leclair<br>Karen Yip |



**Table 2: Summary of Concerns Related to the Whale Tail Project**

| Subject             | General Concerns/Questions   | Addressed in the EIS  | EIS Referenced Section  | Additional Commitments   |
|---------------------|--|---|---|--|
| Project Description | <ul style="list-style-type: none"> <li>Are you going to re-use the facilities at Meadowbank?</li> <li>When is construction starting?</li> <li>Is the open pit going to be filled with waste rock?</li> <li>When does operations start?</li> <li>What will be done with all the waste rock?</li> <li>How long will the pit be mined for?</li> <li>How deep is the open pit?</li> <li>Which lake will have a dyke?</li> </ul>  | Volume 1 and supporting appendices provide a description of the re-use of existing facilities at Meadowbank, a description of the construction and operational schedule. It describes where waste rock will be placed, where dykes are required and describes the physical characteristics of both the waste rock and the open pit.   | <ul style="list-style-type: none"> <li>Use of existing facilities – stated in Table 1.1-1</li> <li>Schedule – Section 1.4</li> <li>Waste rock – Section 1.2.3</li> <li>Open pit – Section 1.2.2.1 and Appendix 1-D; Appendix 8-F.1, Section 4.5.1</li> <li>Dikes – Figures 1.2-1, Figure 1.2-2, Section 1.2.5</li> </ul>  | <ul style="list-style-type: none"> <li>n/a</li> </ul>  |
| Closure             | <ul style="list-style-type: none"> <li>Questions regarding the size of the open pit and comments on how it is not natural</li> <li>How fast the pit will be filled?</li> <li>How will you close the mine?</li> </ul>   | Description of the ultimate size and footprint of the open pit, as well as how the pit will be filled and how the mine will be closed, is outlined in the Interim Closure and Reclamation Plan.   | <ul style="list-style-type: none"> <li>Open pit dimensions – Appendix 8-F.1, Section 4.5.1</li> <li>Re-filling of open pit – Section 1.2.5.6</li> <li>Closure – Appendix 8-F.1</li> </ul>   | <ul style="list-style-type: none"> <li>n/a</li> </ul>  |
| Whale Tail Lake     | <ul style="list-style-type: none"> <li>How much water will be moved from Whale Tail Lake?</li> <li>How deep is Whale Tail Lake?</li> <li>How deep is it where you are putting the water?</li> <li>How much water will be going into the south part of Whale Tail when dewatering the pit?</li> </ul>   | Agnico Eagle described Whale Tail Lake and also described where and how the water will be moved throughout the EIS as the movement of water is a crucial component to the Project.  | <ul style="list-style-type: none"> <li>Dewatering – Section 1.2.5.4</li> <li>Depth – Appendix 6-M</li> </ul>  | <ul style="list-style-type: none"> <li>n/a</li> </ul>  |
| Fish                | <ul style="list-style-type: none"> <li>How many fish are there in Whale Tail Lake?</li> <li>Where does fish go when you start constructing the mine?</li> <li>What will you do with the fish that you will take out from Whale Tail Lake? Where do you send the fish?</li> <li>At closure, when you will transfer back fish into the pit, how do you know they will have food and won't die?</li> <li>Do you monitor fish going out?</li> <li>Who do you pay for the loss of fish?</li> <li>What do you do if you over populate the lake with fish when fishing out?</li> <li>Less fishing and fish available around Baker Lake now.</li> <li>People don't like it in general when fish is transferred from one location to another (fishout).</li> <li>Want to improve the fish populations around Baker Lake. Think the mine does a good job of being clean and that people in Baker Lake could learn from this.</li> <li>Is Agnico Eagle going to check the health of the fish? Are you guys going to check the health of the fish before you put them back?</li> </ul> | Agnico Eagle described the concept of a fishout in the EIS and assessed as part of the effects assessment. Agnico Eagle has proposed offsetting measures related to Baker Lake for consideration to help address some of the concerns around fishing in the Baker Lake area. Traditional Land Use and IQ related to fishing was used in the EIS to help determine the impacts to fishing for people in the area. Agnico Eagle did check the tissue of fish for mercury and metals to understand current fish health.  | <ul style="list-style-type: none"> <li>Population – Table 6.5-3</li> <li>Description of and effects from Fish-out – Section 6.5.3.2.2, Section entitled Fish-Out</li> <li>Traditional fish use- Appendix 7-A, Section 3.3 describes traditional use, but does not include a statement around there being less fish at Baker Lake</li> <li>Improving fish populations around Baker Lake through complementary offsetting measures- Appendix 8-E.4, Section 4.3</li> <li>Fish health- Appendix 3-B, Section 3.B-3.6</li> <li>Fish health monitoring- Appendix 6-K, Section 4.5</li> </ul> | <ul style="list-style-type: none"> <li>As per Technical Comment response (HC 15), Agnico Eagle is committed to monitoring temporal trends in fish mercury concentrations in relation to the flooding of Whale Tail Lake (South Basin). Mercury-related monitoring will be integrated into the Whale Tail Pit – Fisheries and Offsetting Monitoring Plan which will be prepared prior to the Final Hearing</li> <li>Agnico Eagle is committed to continue to work with the HTO on the fish-out</li> </ul> |
| Caribou             | <ul style="list-style-type: none"> <li>Caribou seems smaller, and stay further away from Baker Lake</li> <li>Caribou are passed the Amaruq areas</li> <li>Caribou trails are easy to identify</li> <li>Concerns over stopping work when they are near</li> <li>People feel like they can't cache meet on the land because of the dust</li> </ul>   | <p>The assessment of caribou in the EIS examined movement, identified trails and discusses concerns around caribou staying further away from Baker Lake as well as potential impacts from dust. The TEMP described potential stop work and management around caribou trails.</p> <p>In the assessment on caribou the impacts on dust and caribou were considered as part of indirect habitat loss. A risk assessment was also completed to determine if there were health risks related to dust (through impacts to air quality and soil).</p>  | <ul style="list-style-type: none"> <li>Traditional Land and Resource Use – Table 7.3-1</li> <li>Caribou trails – Appendix 7-A, Figure 3-1</li> <li>Caribou movement and indirect habitat loss – Section 5.5.3.3</li> <li>Caribou migration – Section 5.5.3.4</li> <li>TEMP – Appendix 8-E.7; Section 3.3 and Chart 2</li> <li>Dust – Appendix 3-B-4</li> </ul>  | <ul style="list-style-type: none"> <li>Agnico Eagle has been working in conjunction with the KivIA and the GN to complete a TEMP that addressed concerns around impacts from the mine. The final TEMP will be available in July</li> </ul>   |
| Historical Sites    | <ul style="list-style-type: none"> <li>What will be the effect on archaeological sites (grave, inukshuk, campsite)? Were studies conducted?</li> <li>Concern about historical sites, like caches being disturbed, preference that historic sites not be disturbed</li> <li>Don't want historic sites that are old moved because want to be able to say that "this is where my grandparents came"</li> <li>Destruction of cultural sites due to road routing and borrow pits</li> <li>Concerns graves will not get noticed and get covered in gravel</li> </ul>   | During the development of the exploration road and during consultations regarding the Whale Tail Pit Project, concerns were expressed regarding cultural sites around or near the road. Visits were conducted in 2013, 2014, and 2015 to help identify sites of particular importance. During IQ sessions, maps were provided to help identify important areas. Important sites have been avoided. This information is provided in the Inuit Qaujimagatuqangit Baseline Report and as part of both the archeological and traditional use assessment. The Project is designed so that graves will not be disturbed. In the EIS it states that people will continue to have access to the land via their traditional travel routes to areas of importance to them and will also be able to cross the road to Whale Tail | <ul style="list-style-type: none"> <li>Effects – Section 7.2.3</li> <li>Studies – Section 7.2.2</li> <li>Historical sites – Section 7.0; Table 7.3-1; Appendix 7-A</li> <li>Borrow pits – Section 7.2.7</li> <li>Graves, travel routes – Table 7.3-1; Section 7.3.3.4</li> <li>Access- Section 7.3.2.1.4; Section 7.3.3.4</li> </ul>  | <ul style="list-style-type: none"> <li>n/a</li> </ul>  |





**Table 2: Summary of Concerns Related to the Whale Tail Project**

| Subject        | General Concerns/Questions  | Addressed in the EIS  | EIS Referenced Section  | Additional Commitments  |
|----------------|---|---|---|---|
| Consultation   | <ul style="list-style-type: none"> <li>The KIA would like Agnico Eagle to continue consulting with communities.</li> <li>Request to involve community and Elders in ongoing consultation.</li> </ul>  | Agnico Eagle committed to ongoing consultation in the EIS.  | <ul style="list-style-type: none"> <li>Ongoing consultation – Section 7.3.2.1.4; Section 7.3.3.4; Section 7.3.6; Appendix 8.E-6, Section 5.4, 5.5</li> </ul>  | <ul style="list-style-type: none"> <li>Agnico Eagle has committed to on-going consultation multiple times and does so through community engagement activities mandated by the Inuit Impact and Benefit Agreements, the Community Liaison Committee, and the Socio-Economic Monitoring Committee.</li> </ul> |
| Employment     | <ul style="list-style-type: none"> <li>Will jobs be lost at Meadowbank before Whale Tail gets going?</li> <li>Do the employment numbers include ongoing development at the portage?</li> <li>Is there a difference between male and female operators?</li> <li>Interest in employment opportunities, more information about mining careers – particularly for youth?</li> <li>Meadowbank has had positive effects regarding work preparedness, careers, better health and safety knowledge, providing employment and associated incomes, better access to the land for hunting, search and rescue, environmental education, and community contributions</li> <li>Concerns that Meadowbank has increased use of alcohol, some relationship problems, and challenges associated with rotational employment (being away from home for extended period)</li> <li>Desire for more Inuktitut interpretation for employees, especially as related to medical issues, and for orientations for new employees</li> <li>Employment helps to reduce poverty in the community</li> <li>Meadowbank is an important part of the economy in Nunavut, and an important employer – concern raised that a delay in the Project could have an adverse economic effect, and that people could lose their jobs</li> <li>Comment that a delay could have further adverse knock-on effects to the community of Baker Lake</li> <li>Desire for increased employment opportunities with the Project</li> <li>Concern that money from Agnico Eagle does not go to communities, instead going to the KIA</li> <li>Desire for increased opportunities for employment, skills and training, particularly for women</li> <li>Comment that Baker Lake is the main community affected by the Meadowbank Mine</li> </ul> | Socio-economic questions related to general labour force required for the project are described in the EIS. Socio-economic impacts related to mine employment and both positive and negative impacts were also described in the EIS. While the EIS considered the communities in the Kivalliq region, much of the focus was on Baker Lake because of its proximity to the mine. Socio-economic management related to conditions on site were provided in the EIS through mitigations and through the Socio-Economic Management and Monitoring Plan. The Socio-Economic Management And Monitoring Plan has a list of indicators that show what is monitored at the mine and many of those indicators are directly linked to concerns such as language, employment opportunities related to training and investment in school-based initiatives and/or part of the socio-economic monitoring committee, in which INAC is a part. Agnico Eagle has been very cognisant of potential job loss from delays in the process and have planned the Project to avoid such delays. | <ul style="list-style-type: none"> <li>Employment – Appendix 8-E.6, Section 5.1</li> <li>Education and Training – Appendix 8-E.6, Section 5.3</li> <li>Community wellness – Section 7.4.3.4</li> <li>Construction delays – Table 7.1-3; Section 7.4.3.2, 7.4.3.3</li> <li>Language use – Appendix 8-E.6, Section 5.1, 5.3</li> <li>Employment opportunities – Section 7.4.3.3</li> <li>Baker Lake Impacts</li> <li>Monitoring Socio-Economic Indicators (i.e. language, employment)- Appendix 8-E.6, Table 1</li> </ul> | <ul style="list-style-type: none"> <li>Agnico Eagle has committed to provide a Labour Force Analysis (Commitment 26) prior to the Final Hearing.</li> </ul>   |
| Shipping       | <ul style="list-style-type: none"> <li>How many ships to Baker Lake once Whale Tail starts?</li> <li>Will there be a need for increased shipping traffic?</li> </ul>  | Agnico Eagle described shipping needs in the Project Description.   | <ul style="list-style-type: none"> <li>Shipping details – Section 1.2.6; Appendix 8-D.5</li> </ul>  | <ul style="list-style-type: none"> <li>n/a</li> </ul>   |
| Traffic / Road | <ul style="list-style-type: none"> <li>Amaruq road could have benefits, but could impact area</li> <li>Concern regarding road safety</li> <li>How long is the road?</li> <li>Is the gravel on the road safe?</li> </ul>   | Agnico Eagle developed a plan for the management of traffic on the road to Whale Tail Pit. A risk assessment was completed to assess if there were any risks associated with dust/air quality on human and or wildlife health.  | <ul style="list-style-type: none"> <li>Safety – Appendix 8-C.1, Section 9</li> <li>Length – Section 1.2.7</li> <li>Material – Appendix 8-C.1, Section 7.3</li> <li>Risk assessment – Appendix 3-B, Section 3.B-1.3-</li> </ul>  | <ul style="list-style-type: none"> <li>n/a</li> </ul>   |
| Dust           | <ul style="list-style-type: none"> <li>Concerns that Meadowbank has also increased dust from truck traffic</li> <li>Dust along the road from Baker Lake to MBK and impacts to plants and caribou</li> <li>Perception is that dust travels very far</li> <li>Studies on dust effects tundra</li> <li>How far does dust go?</li> <li>Concern regarding water treatment as related to dust or effluent.</li> </ul>   | Agnico Eagle provided information on how far dust will travel from the road and Agnico Eagle assessed the impacts of dust on vegetation, caribou, and on traditional use. The EIS contained mitigations related to minimizing the impacts of dust. Dust impacts related to caribou were considered as part of indirect habitat loss.  | <ul style="list-style-type: none"> <li>Traffic on Roads – Section 4.3.3.1; Section 4.3.3.4</li> <li>Vegetation – Section 5.4.3.1.2; Section 5.4.4</li> <li>Distance – Appendix 4-C</li> <li>Water quality – Section 6.4.3.1; Section 6.4.4.2</li> <li>Caribou – Section 5.5.3.3</li> <li>Dust – Section 4.3.3.1, 4.3.3.2, 4.3.3.3, 4.3.3.4</li> </ul>   | <ul style="list-style-type: none"> <li>Agnico Eagle committed to continuing doing a risk assessment every 3 years looking at the influence of dust and is described in Technical Comment response to Health Canada HC 05.</li> </ul>  |



# **APPENDIX A**

**Notes and Records of 2016 Ongoing Engagement Efforts**



# **APPENDIX A.1**

**February 2 to 4, 2016 Notes**



# **Agnico Eagle Mines: Amaruq and Whale Tail Pit Project**

## **NOTES**

### **Traditional Knowledge Consultations**

**(Including: Meetings with Elders, CLARC, Baker Lake HTO, and Focus Groups for Youth and Women)**

**February 3-5, 2016 - Baker Lake, Nunavut**



Facilitated by: Page Burt  
**Outcrop Nunavut**  
Rankin Inlet, NU.



**AGNICO EAGLE MINES:  
Amaruq and Whale Tail Pit Project  
NOTES  
Traditional Knowledge Consultations**

**TABLE OF CONTENTS**

|   |           |
|---|-----------|
| <b>Executive Summary.....</b>   | <b>3</b>  |
| <b>Notes from Elders Meeting.....</b>   | <b>7</b>  |
| <b>Notes from CLARC Meeting.....</b>  | <b>20</b> |
| <b>Notes from HTO Meeting.....</b>  | <b>33</b> |
| <b>Notes from Women’s Focus Group.....</b>  | <b>40</b> |
| <b>Notes from Youth Focus Group.....</b>  | <b>47</b> |
| <b>Appendix.....</b>  | <b>60</b> |
| • Major Outstanding Concerns from Baker Lake HTO Regarding Agnico Eagle Mines’ Projects Near Baker Lake |           |

## EXECUTIVE SUMMARY

These meetings, held in Baker Lake in February 2016 were designed to serve as a follow-up to a three-day meeting with Elders held in Dec. 2014, and site visits held with the HTO and elders groups in July and September 2015. That consultation resulted in a Report on Traditional Knowledge regarding the area around the Amaruq and Whale Tail Lake Project and the subsequently-approved Amaruq Access Road connecting the Meadowbank Mine with the Amaruq exploration camp and future satellite deposits. The 2016 meeting with the Elders was intended to allow them to discuss ideas and opinions developed since the 2014 meeting, and to add information to and correct information on two maps prepared based on the material discussed in 2014- 2015 and locations and placenames added to printed maps and to files on Google Earth. During the months after the 2014 meeting, several Elders were taken out to the proposed road route and to a number of sites located by the team of professional archaeologists working on the archaeological baseline for the access road and the Whale Tail Pit Project.

In addition, the team, which consisted of Ryan Vanengen of Agnico Eagle Mines, and Page Burt, Outcrop Nunavut and Nanuk Enterprises of Rankin Inlet, organized four additional meetings to collect input on traditional knowledge, as well as data on community opinions and knowledge from three different groups. A meeting was held with 17 students in Grades 9 – 12 at the High School on February 3. Another meeting was held February 3 in the evening with 8 women selected pretty much at random from the community. And on February 4, a meeting was held with the Kivalliq Inuit Association's Community Land and Resource Committee (CLARC) during the day and with the Baker Lake Hunters' and Trappers' Organization (HTO) in the evening. On February 5, a full day meeting was held with the original group of Elders consulted in Dec. 2014, plus several additional Elders. All Elders consulted had living experience in the area between the Back River and the current Meadowbank Mine.

Page Burt facilitated all five meetings. Ryan Vanengen of Agnico Eagle attended three of the meetings (CLARC, HTO, and Elders' Meeting) to provide information from the company and to assist with note-taking. Karen Yip (Community Liaison Officer for Agnico Eagle Mines) and Alexander Alooq assisted with note-taking and facilitation of the youth meeting. Alexander Alooq and Michael Haqpi assisted with interpretation and note-taking in the women's meeting.

All translation was consecutive, which allows for better note-taking. In the Elders' meeting, most members of the group wore the translation equipment headsets as many have hearing problems. The interpreter, Alexander Alooq, brought the translation microphone to whichever Elder was speaking, so that all with headsets could hear, in amplified form, whatever was being said by the Inuktitut speaker. He simply spoke into the microphone when interpreting any English, which also enabled the Elders to hear the translation of all English in amplified form.

This report contains the notes from each meeting, as well as the questions used to guide the consultation.

## **Summary of the Elders' Meeting**

Eleven Elders attended this meeting. Nine had been in the meeting in 2014, and two had been added to the group due to our learning that they had skills and knowledge about the area, but had not been available in 2014. Enthusiasm was high, and they were extremely helpful. The Notes delineate the questions asked and the responses given. They discussed the site visits in 2015, and freely shared their advice. They spent about 2 hours looking at the maps, adding new material, making a few corrections to older material, and correcting the Inuktitut on the maps.

The major concerns expressed in this meeting were that, if at all possible, no archaeological sites should be disturbed; that the road should be routed to avoid all sites. That said, some agreed that some sites are of more common such as recent camping sites, and therefore are of less value. The field trip to the sites was discussed briefly to share info with those who had not gone on that trip. They discussed the importance of these isolated places on the land to the memory of those who had gone before and to those who follow, and can, in the old sites and structures, learn of the past of their ancestors.

We discussed caribou migration patterns, fish habitat, a bit of wildlife information, and had a short discussion of changes being seen in weather patterns. We also had a short discussion on water quality, and concern was expressed regarding dust (and anything else) going into the water, as well as their very real concerns about the water treatment system for the community of Baker Lake. Ryan Vanengen described an idea for improving water treatment, as a part of Agnico Eagle's requirement to replace fish habitat being affected by the Whale Tail Pit with habitat improvement elsewhere. AEM's idea is to assist the community of Baker Lake in possibly creating a passive wetland treatment that will much improve their water treatment system, plus will assist in restoring fish habitat in downstream lakes and cleaning up the outflow into Baker Lake. This was received with clear enthusiasm and the suggestion by a Hamlet Council Member that Ryan be invited to present this idea to Council.

When asked if they had any further advice for Agnico Eagle Mines regarding this project, they repeated their recommendations that Elders be involved more in providing advice on any decisions that involve the effects of development on the land, wildlife and historical sites in the area. They are willing to be involved and to share their opinions and thoughts.

## **Summary of the CLARC Meeting**

Six members of the CLARC, plus one staff member, attended this meeting. The plan was to ask a number of questions similar to those used in 2014 with the Elders, to get as much traditional environmental knowledge as possible from these people. However, they had a very different agenda, which was to present a list of five concerns to Agnico Eagle. This list of concerns was developed by the Baker Lake Hunters & Trappers Organization, and was verbally presented by Joan Scottie. (The list, in Inuktitut and English) is attached to this report as an Appendix.)

They are most concerned with:

- Consultation with community and Elders prior to obtaining permission to build this road.

- Dust along the Baker Lake to Meadowbank road (there was a long discussion regarding dust and dust control)
- Consultation of Elders about specific sites along the Amaruq Road and the routing of the road and the location borrow pits.

Since virtually no traditional knowledge information was discussed in this meeting, perhaps another attempt could be made when we could be assured of KIA staff participation.

### **Summary of the HTO Meeting**

A meeting with several members of the Baker Lake HTO was held in the evening on Feb. 4. A similar problem occurred with this meeting; the participants wanted to present their five main concerns that Agnico has previously responded to and spent the CLARC session discussing (see Appendix). In the time available, we were unable to get to the traditional knowledge information they might have been able to provide.

### **Summary of the Youth Focus Group**

The Youth Focus Group, held on Feb. 3 at the High School, immediately after school, was fully attended; we had 17 enthusiastic participants. Rather than focusing heavily on traditional knowledge with this group, we focused on trying to determine what the students know about the mining industry, jobs in the industry, and how to communicate with this age group.

We concluded that the youth of Baker Lake:

- Prefer to communicate in English.
- Although many have relatives that work at Meadowbank, they know virtually nothing about the mining industry, and not much about the variety of jobs available in the industry.
- Some have used the road and a few (boys, and one girl) hunt and fish regularly, but most are not really “into” traditional knowledge, though it was clear they would like to know more.
- Most are beginning to be concerned about careers, so are likely receptive to information that may lead to jobs.
- The best way to communicate with these youth is via Facebook and email.

### **Summary of the Women’s Focus Group**

The women’s focus group met in the evening on Feb. 3. It was a cross section of women from the community, from young women in their 20s to some in their 50s. One is very involved in seniors’ issues and wellness. None currently work for Agnico Eagle, but a couple had done work out at site in the past (counseling and two as housekeepers). They were very willing to talk. They were able to list both positive and negative effects due to the development of the Meadowbank project.



In general:

- Positive effects (of the Meadowbank Mine) range from financial benefits to better preparedness to work and for careers, better knowledge of safety at work and on the land, better access to the land for hunting (due to the road) and search & rescue, better knowledge of how to look after the environment (which they said is badly needed in Baker Lake and on the land), and an appreciation of all the things Agnico Eagle is doing for the community.
- Negative effects include concerns about dust and truck traffic, increased use of alcohol, some relationship problems, difficulty in getting enough time off for emergencies at home (mostly bereavement), being absent from the family for long periods of time, and difficulties in getting help at home, plus a concern about historical sites potentially impacted due to mine/road construction.
- No one had a problem with women working at the mine, but said it takes time to learn the jobs and how to work. Advice often shared with young women was to “finish school, learn your job, and leave your attitude at home.” Advice to young men going to work there: “learn your job and be patient, you can’t learn it all at once – don’t quit, but work through problems”.
- They would like to see more Inuktitut interpretation services made available to employees, especially when they are having medical problems, or being reprimanded.
- They all felt some sort of orientation for the employee and for the family is needed when people first go to work for Agnico Eagle.

## **ELDERS' SESSION**

### **NOTES from Consultation – Amaruq and Whale Tail Pit Projects**

**Feb. 5, 2016, Friday, 9:30 am – 3:30 pm**

**Iglu Hotel Conference Room**

#### **AGENDA**

- Prayer and introductions of all participants, including research team.
- We met December 2014 regarding your knowledge about the area to the NW of Meadowbank, between the Back River and MB Mine. You shared your knowledge generously and it has been appreciated. Agnico Eagle has ensured that the resulting report has become a guiding document for all work to be done in that area. The company deeply appreciates all the work you did last year in contributing to knowledge of the area, and has taken your suggestions seriously.
- Ryan will report on the project in general and on follow-up to the report that has occurred this year.
- Last year, we wanted to include a couple additional people in the group, but they were not available when we met, so we have invited them to join us this year. These include:
  - Tom and Hattie Mannik (could not attend, out of town)
  - Phillipa Iksiraq (attended, valuable info and insights)
- Because not much traditional knowledge was discussed the previous day with the CLARC, we invited Andrea Philips to attend this session as well, as youth rep. Her principal, Gary Kennedy agreed readily. She is a real asset to a group.

#### **PRESENT:**

Winnie Ikinilik

Thomas Anirniq

Thomas Iksiraq

Hugh Avatituuq

Norman Singaqti

James Kalluk

Andrea Philips (Youth rep., invited to participate)

William Noah

David Toolooktook, Sr.

Interpreter: Alexander Alooq

Facilitator: Page Burt, Nanuk Enterprises and Outcrop, Rankin Inlet.

Agnico Eagle rep: Ryan Vanengen

Regrets: Joedee Joedee (He called and said he had a bad cold and did not want to expose these Elders to it. We agreed readily; some are frail and respiratory illnesses are now a real risk.) For any further meetings, Joedee should remain on the list.

<sup>1</sup>Edwin Evo was not in the group in 2014, but probably should have been. He has spent a lot of time in the study area. He speaks English well, has been involved as a tourism operator, and with the HTO, and is a deep thinker. He has recently lost his eyesight, but still can contribute sound info. He should be added to the group.)

## GENERAL INSTRUCTIONS TO THE GROUP

Today, we will not be repeating the work we did last year, but would like to **add to** the knowledge and ask a few more questions to get more input from you regarding placenames and your advice on further ways to ensure that IQ is used in the development of this road and associated deposit sites.

- This morning, we will get your general input.
- We will not concentrate on placenames in the am, but if you have further info re wildlife or Inuit use of the area, we will put it onto maps.
- We have maps prepared based on consultations in 2014 and were updated in October 2015 following consultation at the mine site on September 8, 2015, and would like all to look at the maps and correct anything we have gotten wrong.
- We will again have lunch together here at the Iglu Hotel.
- In the afternoon, we will finish up our discussions and, during the last hour, will add any further names or info you would like to contribute.
- We again have release forms that we will ask you to sign, so we can use the info you have provided.
- We are also recording at least part of the session this time. The recording will be saved and stored by Agnico Eagle Mines. It will not at this time be transcribed, but we will work from notes made today to create a report. It may be transcribed in the future.
- Any questions about the procedure. Does anyone object to our recording this session?

When we convened, William Noah and David Toolooktook Sr. were present. They said they just wanted to see who was attending and to see that the HTO was properly represented in this group. Both left, apparently satisfied, before the session began.

**Ryan Vanengen** presented a brief summary of the status of the Whale Tail Pit project and the Amaruq Exploration Access Road: This project will open up a new deposit area for Meadowbank Mine, about 54 km from the main site. Agnico Eagle will be building an all-weather access road to the deposit area over the next 2.5 years, to be completed by 2018 and are working on permitting to allow mining of a pit and possible underground mine. Details and timing of this project are not certain, depends on consultation, feasibility and licensing approvals.

In the fall of 2015, Agnico Eagle took 12 HTO and CLARC members, and some of those in this Elders' group, on a tour of the esker and the site, accompanied by the archaeologists doing the field work on the road route. They visited some of the most important archaeological sites along the road route, but could not visit all of them. Their comments were noted and changes made to the road route to avoid almost all sites identified by the archaeologists. Michael Haqpi was involved in all the archaeological work and visits to the sites with the Elders.

## NOTES FROM QUESTIONS AND COMMENTS:

1. Based on the work we all did together last year, visits to the site, and meetings during the past year, are there any general topics you would like to discuss this year?

Allow time for people to bring up topics.

**David Owingayak:** Are you saying you are starting the road this winter, stopping for the summer?

**Ryan Vanengen:** Yes, starting this winter as it is easier to deal with the stream crossings and building bridges when the ground is frozen. Intent is to get the first third of the road done using rock from the waste rock piles at Meadowbank, no borrow pits. Then, will stop for the summer of 2016. Will start again next October when the ground freezes, that time using material from a couple borrow pits, esker material. Will work through most of the winter and see where we are in the spring of 2017. May stop for the summer (of 2017) again, or may be able to continue. Hope to have the road completed by 2018.

**Ryan Vanengen:** We are building this road to enable us to do more exploration in the Amaruq area and to transport workers more safely (than flying them by helicopter). Currently, we don't know if this will be a mine, but it is promising. Hopefully all current Meadowbank mining jobs will continue at the Whale Tail Pit. Our goal is to keep all our current workforce, especially those from Baker Lake. We would like to continue work in the Meadowbank area beyond 2018, to prolong the life of Meadowbank Mine. Ore will be mined at the Amaruq/Whale Tail area and trucked to the processing plant at Meadowbank, will not be moving the processing plant. Keeping this mine going, and with a workforce from Baker Lake and the Kivalliq, is important to our company. We appreciate the input we have received from this group as to how to reduce the impacts of mining on the land and wildlife.

**William Noah:** I came to this session to make sure that there were people attending from the HTO and that the people who attended have real knowledge of the area. I am satisfied about that. I was born in the Back River area in 1943 and my family lived there many years. As a grandfather, I am supposed to be responsible to teach my grandchildren about how to catch char in rivers. The rivers around Baker Lake do not hold many char, and the terrain does not permit much hunting with kakivaks. Our elders are all aged now, and can't do much to improve fishing. We can't really improve fishing areas around Baker to fish for char. If we want to teach our children or grandchildren to use fish spears, we have to do it in the Back River. We have been doing visits to the Back River for 10 years now. There is only one place where a plane can land. Seeking sponsorship from KIA, NTI, and others. (William left after this. He was invited in 2014 to be a part of this group but did not attend.)

**Dave Toolooktook, Sr.:** I also came to make sure that this group included members of the HTO and people who know the area. (He left after this.)

**James Kalluk:** Was wondering about the storage cache that was mentioned yesterday at the CLARC meeting. Those rocks may have been a cache for storing summer skins for pickup later when there is snow.

**Philippa Iksiraq:** In the past, our ancestors built all their own resources. Some caches were built to store fish, some for dried meat, some for caribou skins. Those structures we don't want disturbed or touched. In the past, when starting Meadowbank, we provided information to the company on IQ. The mining company said they would not disturb sites, but they did disturb them. We hope that more of these historic sites will not be disturbed and that Agnico Eagle follows the instructions given by the Elders. The information gathered from our ancestors is important. We were taught to respect the environment and told not to go into certain areas. In some areas there were things we were told not to touch or disturb.

**Hugh Avatituq:** We would be pleased if none of the historic sites were disturbed or moved when you construct this road. The road follows some of the trails our ancestors travelled, and it is important that their sites are not disturbed.

**Edwin Evo:** Some of the camps and tent rings were before my time, made by our ancestors. Would like to add my concerns – we heard that the road will go through wolf-denning areas. We don't want these disturbed.

**Ryan Vanengen:** A few of the planned borrow pits are in an esker which parallels the road. The road does not go directly through these eskers and denning areas. The esker has been studied by the wildlife consultants and all borrow areas have been moved to avoid any wolf denning areas.

**James Kalluk:** I grew up in that area. I remember that there was a lot of wildlife there. Travelling was pretty tiring but it was where we lived. There were also many fish. I fished there in 1950. I can't recall all the fishing spots, but there were places where there were many fish. It is getting harder to find fish to harvest now.

**Edwin Evo:** There were many fish in the area from the Back River to Meadowbank.

**Ryan Vanengen:** Any ideas about how to improve habitat for fish near the community of Baker Lake?

**Ideas were not forthcoming at this point in the discussion.**

**Edwin Evo:** How many quarries?

**Ryan Vanengen:** Seven quarries along the road. Most are on the north side of the road, in a long esker system. The road parallels the esker, and is not on it and in some cases set south from it. Side roads will allow access to the esker material.

**Winnie Ikinilik:** The young people who go out on the land with their parents learn a lot. Before the existing road was made there were trade routes, ways people travelled to come to Baker Lake to trade, from the Back River area. Tent rings indicate many places where people camped. When the Meadowbank Road was made, some of the tent rings were covered by the road. The Elders want the tent rings to remain, not be disturbed. I have a feeling that the company will not take the advice given.

**Ryan Vanengen:** We hired a professional archaeologist (Jennifer Tischer's group, Nunami- Stantec) who walked or flew over the entire road route. She identified many archaeological sites. Each has been catalogued and assigned a number, and all have been photographed and described in the archaeological report. The road is designed to avoid all archaeological sites, except those on Borrow Esker #2. To my knowledge, on this esker the archaeologists identified two tent rings and two meat caches. Culture and Heritage group will advise as to what to do with these structures.

**Edwin Evo:** Ryan, what they are getting at is that these sites mean a lot to our grandchildren. They can say, "Our grandparents were there". We don't want these sites destroyed. We are trying to educate our youth.

**David Owingayak:** I would like to comment on the archaeological sites at "Esker 2", these specific structures. We have mixed feelings about some artifacts or structures. For example, one of my parents' graves located by the sand pit was moved so that the community could get gravel. I found it disturbing that the grave was moved. It is not right to move artifacts that we feel are important to us. But we have mixed feelings about some of these. The long ago ones and those with many structures should be avoided. Before they could get straight pieces of wood, Inuit used bones to peg skins out to dry on the ground. Those with wood pegs are later. Perhaps others could give opinions of what they think.

(During a short break, AEM shared photos of the sites at Borrow Esker #2; David confirmed the findings of the archaeologist and shared his opinion about the sites. Amongst the smaller group, they all agreed the tent rings were not old and that the other features were low value. Andrea, the youth representative, shared the idea of making the archaeological mitigation work in 2016 an educational experience for the youth – this was well received by AEM and will be shared with the archaeologist).

**Edwin Evo:** My parents and I were on the way to the Herman River, north of the Amaruq site. Just north of Amaruq, there are lots of boulders. While we were travelling, we saw a wolverine disappearing in the rocks. The mother wolverine ran away, but we looked in the rocks and found 2 pups. Later we found another adult wolverine and pups. These wolverines were denning in boulder/rocky areas. Eskers are denning areas for many animals, not only wolves but foxes and wolverines as well. It is important that the environment people do a study to find wolverine denning areas.

**After this, we broke for lunch and then got into the questions. At various points, people added to or corrected the maps prepared by Golder. There is likely a font problem on those maps, will try to figure out what happened there, but they had numerous corrections to the Inuktitut.**

2. For the following topics – have you seen any changes in the past 5 years? Want to make any further comments on how you see these?
  - Caribou numbers and migrations, general health and indications of disease

**Hugh Avitataaq:** My opinion is that the caribou are now coming from the Quoich River area. There used to be many migrating north of Baker Lake – we used to be able to catch them closer to town. Now seem

to go north of Meadowbank. Seems to be a lot less close to town, and less to be found east of the community.

**James Kalluk:** When we used to see or catch caribou, they seemed to be larger, in all age classes. Now, they seem smaller. We don't see very many large caribou today. They are smaller in stature.

**Edwin Evo:** There is a big lake to the south of Amaruq, a long lake. Caribou pass by here and then go past Meadowbank. There is a crossing spot with lots of hair washed up on the shores.

**Thomas Anirniq:** There used to be a more heavily used migration route when caribou migrate from the NW to here. Caribou tend to turn back now. Closer to Baker Lake, the caribou seem smaller.

**Edwin Evo:** I used to get caribou past Amaruq by skidoo. Getting them to make mikku (dry meat).

**Thomas Iksiraq:** Yes, we do go up there to hunt when we are able. There are very good caribou in that area; they are very fat. It is harder to travel now) Closer to Baker Lake, the caribou do seem to be fewer. Even though we can get caribou close to town, we long for "our" kind of caribou, the ones that are larger and fatter are more tender. We can tell when we look at them..... I think it is a different herd – perhaps Qaminuriaq? The closer ones are probably disturbed more, and don't grow as well.

**Philippa Iksiraq:** Not only the caribou migration routes have changed, but the routes traveled by the people have also changed. People can travel very far now. Wolves and caribou were usually close together. Today, wolves seem farther away, and farther from the caribou. Reminder for IQ – caribou trails are easy to identify, and show where the caribou have migrated for years. Also, people erect stones to identify where caribou cross rivers.

**(Note from Page:** When doing my environmental baseline work for Diavik, I had my Inuit field assistant spend her evenings mapping caribou trails on overlays on airphotos for the wildlife crew, using info from the deeply incised trails to show migration routes from past years. It became important to know these as the activities disrupted the migration and the caribou changed their routes. Maybe this type of mapping is routinely done now, but it was a new idea at that time.)

**James Kalluk:** My father knew the routes. He travelled on foot for many years, harvesting caribou in the early mornings for winter use. He was very sleepy, but walked anyway. We depended on those caribou.

**Andrea Philips:** I think it is important that the Elders who know this talk with the youth. The boys especially want to be out on the land and want to learn this. Some girls do, too. Will people be able to use this new mine road, or will they have to find their own ways beyond the end of the existing road?

**Ryan Vanengen:** The Baker Lake to Meadowbank road isn't accessible after Km 85 (because it then goes through the heavily trafficked mine area). The road to Amaruq will start at Vault Pit on the mine site. We have been told that hunters travel along the road and then branch off to hunt or follow lakes. Hunters aren't allowed in the mine area for safety. The Amaruq road will be part of the mine site, so hunters won't be able to access it. They can't go on it, but can cross it.

**James Kalluk:** Younger people may be shooting more sick caribou. Older, more experienced hunters can assess the animals and pick the good ones.

**David Owingayak:** Yes, IQ says to pick the healthy animals.

- Musk ox in area – numbers, general health

DID NOT GET TO THIS.

- Bears

DID NOT GET TO THIS.

- Wolves and wolf denning

They talked briefly about wolves in the context of the caribou herds, but not specifically.

- Fish populations

In the context of talking about improving the sewage treatment system for Baker Lake, they mentioned that Airplane Lake (near Baker) used to have good fish populations and everyone fished there. The fish are no longer any good due to the sewage that leaks into this lake.

- David Owingayak: Although there are many concerns often expressed about the mine, they do a great job of keeping a clean site and the people of Baker Lake could learn from the respect for cleanliness and the environment.
- Food birds

DID NOT GET TO THIS.

### 3. Climate and weather

[NOTE from Page: We discussed this in some detail last year but it was at the end of the workshop and all were tired. The same thing happened this year; we were able to obtain only a little info, due to fatigue.]

- Do you want to continue this discussion?

They did want to talk about weather (always do), but were running out of energy.

- Changes you have observed over the last 20 – 25 years?



- Rainfall in summer
- Rainstorms and thunderstorms – more or less than 20 yrs ago?
- Snowfall in snow season
- Amount of snow accumulation on ground
- Change in the character of the snow
- Movement of weather patterns
- Prevailing winds – direction, severity or changes in direction
- Anything else?

**Thomas Anirniq:** Water levels everywhere have dropped. Everything is using water.

**Barnabas Oosuaq:** While we are speaking of water, there used to be more moisture on the ground. The land is now very dry.

**James Kalluk:** I agree with Barnabas, the land has changed due to the earth's tilt. Things have moved. We used to be able to navigate by the sun and stars, but now it is more difficult. The constellations even have moved to new spots.

4. Some had a visit to Meadowbank Mine and sites along the proposed road route this past summer. Do you want to share stories of that trip with the rest of the group?

[NOTE from Page: Some stories emerged at different points, and are included in the notes.]

**In general:** They were happy that some Elders were taken out to the sites, but more would have liked to go, and the time was very short. They need more time to be on the ground, to assess/figure out where they are and recognize the area, in order to tell stories about it. One day-trip with short visits and just flying over the land doesn't give them enough time to reflect and speak. (Helicopter flying is disorienting, especially to Elders, and people need to land, get their bearings, and then walk around a bit or just sit and look. Then they will talk.)

- Allow time for sharing: make notes of comments.
- **To Thomas Anirniq:** Were you able to locate the grave site you were concerned about when we met in Dec. of 2014?

**Thomas Anirniq:** He said (in the HTO meeting, I think) that they took him to a grave site but that it was not his mother's grave). He says he knows where the others are and would like to go there and put up crosses so the sites can be recognized as graves. (Something for Agnico Eagle to consider – take him up there in the summer, find these and put out crosses.)

**Thomas Anirniq:** When we lost family members in the past, we moved from the area and had to continue on without them. We needed to let them rest in peace. If we did not move, our lives would not go well. Today, mourning seems to take longer.

**Norman Singaqti:** My seven siblings passed away in the same area. Brothers and sister, step-mother, all. They are buried not far apart, in a low valley, near (?) Depot Lake. (Not sure of lake name.)

**Philippa Iqsiraq:** My family and I lived near Qikiqtaqtuq and Upingirvik lakes, and then moved to live near Amaruq.. ( Note from PB: I *think* I have these lake names right. This area is to the west of Meadowbank, about 50 km west, from map.)

- How about the wolf denning area? Did you find dens? See wolves or wolf scats? Was the area recently used?

They saw some evidence of wolf dens but did not have much time on the ground. They emphasized that the wildlife research team should spend time and identify den sites. Wolves and wolverines were of the most concern.

- Old campsites along the esker? Did you find any evidence of this?

Some, but not all of the Elders attending went on the visits (July and September 2014) to the road area. As I understand it, they visited some of the more important sites identified by the archaeology team, but not by any means all sites, as those are scattered all along the road.

[**Note from Page:** The two upright stones at **LhLa-5** (5.5.1, p. 59 of the report) are likely a drying rack. Have seen many of these at Bathurst Inlet. Thongs are strung over the two rocks and meat or fish hung over the thong to dry. I note the text does say that the Elders thought this a drying rack as well. If it is a drying rack there *may* be a tent ring or siniktarvik (sleeping shelter) in the area as drying racks were often attended to keep foxes from stealing the meat.]

- Did this trip and discussions out on the land remind you of any other special places or concerns you would like mentioned to Agnico Eagle?
5. When finishing up the report last year, we found mention of an area of special spiritual significance located between Baker Lake and MB Mine (indicate on map). This was mentioned in the original TK work done for the mine. Do any of you know about this area or want to comment on it?

WANTED TO GET TO THIS, BUT DID NOT.

[**Note from Page:** I suggest removing this area from the map as it came from the earlier TK work and is distracting to people reading the report, yet we don't have any concrete information on it. Or purposely check with someone like Hattie Manik.....Possibly Karen could do this?]

6. One thing we did not discuss much in 2014 was water quality.
- How do you decide whether the water you are using is good or not?

**James Kalluk:** Our ancestors were able to determine whether the water was good to drink or not. They used the temperature of the water, whether it was murky or clear, looked at it to see what was in the water.....

- Do people from Baker Lake go out and get water from the river for personal use? Why is this water considered “better”?

[**Note from Page:** I asked this but no one answered it. Might not have been translated sufficiently, as everyone was trying to talk at once. In Rankin people, not only Elders but many people, do go to the Meliadine River to get water. They prefer it to water that has had chlorine and fluoride added.]

- Does any of the water used in Baker Lake come from rivers flowing through the MB area or is it all taken from the Thelon watershed?

**David Owingayak:** Today there is more salty water coming into Baker Lake. In 1949, the level of Baker Lake was high and the flow of the Thelon River was strong. There was no sandbar (at the river’s mouth). Today the water levels are much lower. The water is much more salty where it used to be fresh and clean.

**Philippa Iksiraq:** When we moved here in 1957, the water was clear and clean and the water level was high. Today some parts of the lake seem yellowish. We (the community) get water from the lake, in front of the community.

[**NOTE from Page:** These Elders did not address whether they go to the Thelon or any other river to get water, but I heard later from a teacher that people DO go out to the Thelon to get water that has not passed through the town treatment plant. They also commonly go to the Prince River bridge for drinking water.]

**Thomas Anirniq:** The water goes through a cycle, water is pumped out of the lake, delivered to the houses, used, pumped out and dumped in the sewage area (to the north of town, uphill from the town, but on another watershed). It goes down and flows back into the lake, then back to the pickup area.

Many nodded and view this as a concern.

- How can you decide whether the water in an area is good to use or not?

**Thomas Anirniq:** The salinity level in Baker Lake is higher, and more tides come in. We get high tides from the coast. The lake level is lower, and there is less water in the rivers. Ships used to come through the south channel (in Chesterfield Inlet waterway), but no longer can do that. The summers are longer, the weather has changed. In the 1960s and earlier, the summers were much shorter. (Winnie was nodding, obviously agreeing.)

- How do you get water in winter?

**James Kalluk:** Water flows constantly, even in winter. (He must mean in some places, because all small streams and some shallow ponds freeze completely.)

**James Kalluk:** Would like a clarification of IOL and Crown Land.

Ryan asked Page to explain.

[**NOTE from Page:** I explained some of the history when the land claims were being settled, that people were allowed to choose lands..... That Crown Lands belong to “the Queen in Right of Canada”, i.e., to the government of Canada, and indirectly to all people in Canada. And that Inuit-Owned Lands belong to ALL INUIT, together, but the IOLs in each region are administered by the RIA or Regional Inuit Association, so, in this area, by KIA. And that these lands were chosen by Inuit who were selected to participate in regional meetings, and could propose lands to be picked. Lands were chosen based on traditional use, importance to local people, sacred spots, access to wildlife for sustenance, or on monetary value, such as mineral potential, potential for dam sites for hydroelectric power, etc. Also mentioned that rights to these IOLs are in two categories, Surface Rights and Surface and Subsurface Rights. They are different colours on the map of IOLs in Nunavut, which should be in the KIA office and probably the Hamlet office as well. Those with subsurface rights are probably the lands with high mineral potential, and the potential to bring in revenue to Inuit.]

- How do you decide whether that water is good, or not?

Omitted this as well.

[Discussing water quality provided an opening for Ryan to bring up a proposed project that can be used to offset loss of fish habitat due to damming Whale Tail Lake.]

## **FISH HABITAT OFFSETTING NOTES**

**Ryan Vanengen:** Did a short PPT presentation on the present sewage treatment system for Baker Lake and the lack of reliable wetland treatment. He then said that since Agnico Eagle will be placing a dam in Whale Tail Lake, they are required to replace some fish habitat, but that it does not have to be at the mine site. He said their staff have long been concerned about the sewage disposal for Baker Lake and how the passive wetland site is clogged up and no longer working well. In the spring, sewage runs over the surface, down into two lakes, then via a creek into Baker Lake just north of town. The water intake for town is just off the community, in the lake and is less than 2 km from the outflow. That isn't good, as the currents in the lake are often east to west, and there is concern about the quality of the water entering the system.

Agnico Eagle is willing to work with the Hamlet of Baker Lake on improvement of the sewage treatment system. The water specialists have looked at the system currently in place and have some suggestions. The place where the sewage is dumped is full and not effective. AEM will work with the GN and the hamlet; it may be that moving the dumping point to the east, to the other side of the landfill, where there is a much larger sedge wetland, may improve the system. This could be modified slightly to slow

the drainage and the plants would clean the water much better. This would allow the few small lakes in the system to clean themselves, and over time, and improve the fish habitat. In time, the water going into Baker Lake would be cleaner, and would reduce the potential risks of contaminating the drinking water of Baker Lake.

Ryan showed maps and aerial photos of the system and area. People were fascinated and engaged.

**David Owingayak:** I think this is a *good idea*, and it is close to my heart, not only the sewage treatment but the new landfill. The mining people cleaned up the old dump. It is very nice now and we can use it safely. They did a really good deed for Baker Lake.

We dump things all over. BLCS just dumps wherever.... We need to push to clean things up.

The landfill to the north of town is awful! When it burns, the smoke comes into town and people, especially elders, really suffer. My wife is one of these, she can't breathe on days the dump is burning, and feels terrible. I'm sorry but I'm tearing up! The mining people are clean, clean, clean! They keep the area around their buildings clean. They have helped us lots. We just never thank them. My, my, this is terrible – what are we thinking – we should thank them!

Many others in the group agreed. James and Thomas noted that improving sewage treatment is something the hamlet has been discussing for a while and the elders would like to an improvement in the wastewater and lakes near the hamlet including Baker Lake.

**Thomas Anirniq:** I have been on Hamlet Council since 2011. Let's talk about this in Council. We should invite Ryan to talk to Hamlet Council about this. Let's set up a date ahead of time, maybe April or May.

**James Kalluk:** Yes, this is a very good proposal. My mother used to fish in Airplane Lake and the smaller lake. Used to get fish from there. The fish now are not fit for dogs. The water is contaminated.

**David Owingayak:** We used to swim in those lakes. And they had good fish. Everyone fished there.

**David Owingayak:** I think this is a very good idea for the water treatment. Also, the dump was moved to its present site from east of town. I always disagreed, thought it a poor site, with drainage into the water system. Now the smoke goes into town, and causes an air quality problem. Baker Lake creates more dirt than any mining project. The project is as clean as possible, but us....our own community, so dirty....! We need to clean up.

7. Is there anything else that has come to mind in the past year that you would like to talk about in relation to this proposed road and new mining area?

**Ryan Vanengen** was able to get into a discussion as to replacement of fish habitat by doing some sort of project to improve sewage treatment in Baker Lake. (Notes on this are in the water quality area above.)

8. Any additional advice for Agnico-Eagle Mines regarding this project?

Make sure Elder involvement (by people who lived in the area) is ongoing.

AT THIS POINT WE FELT WE WERE ENDING ON A HIGH NOTE, WITH ALL FEELING GOOD ABOUT THE DAY, SO WE DID PRIZES, COMPLETED THE RELEASE FORMS, PAID EVERYONE, AND ENDED.

# **COMMUNITY LAND AND RESOURCES COMMITTEE (CLARC) MEETING**

## **NOTES from Consultation – Amaruq and Whale Tail Pit Project**

**Feb. 4, 2016; Wed. 11 am - 3 pm**

**Iglu Hotel, Conference Room**

### **AGENDA**

- 1) Prayer and introductions of all participants, including research team.
- 2) We met last December with 10 Elders who had lived in the area between the Back River and the Meadowbank Mine, regarding their knowledge about the area. They shared their knowledge generously and it has been appreciated. Agnico Eagle has ensured that the resulting report has become a guiding document for all work to be done in that area. The company deeply appreciates all the work done last year in contributing to knowledge of the area, and has taken the suggestions seriously.
- 3) Ryan will briefly report on the project, and follow-up to the report that has occurred this year.
- 4) Agnico Eagle welcomes any information or comments you would like to make regarding this project.
- 5) We have release forms that we will ask you to sign, so we can use the info you have provided.
- 6) We also would like to record this session. The recording will be saved and stored by Golder and Agnico Eagle Mines. It will not at this time be transcribed, but we will work from notes made today to create a report. It may be transcribed in the future. So the permission forms include recording.
- 7) Any questions about the procedure? Does anyone object to our recording this session?
- 8) We have brought some maps and invite you to add info to these maps.
- 9) If we have time, we will pull up the data on Google Earth and invite all participants to work together to add placenames.

**TO NOTE: In this session, we did not get to much traditional knowledge work at all. This session became a vehicle for presenting a list of concerns from the HTO (via CLARC) to Ryan Vanengen of Agnico Eagle Mines. We did not have a chance to even ask any of the questions outlined. (I have left them in this document in case there is another chance to meet with the CLARC in a less confrontational experience.)**

### **PRESENT:**

- **Joan Scottie**
- **Jamie Seeteenak**
- **Mike Akilak**
- **Thomas Anirniq**
- **Basil Quinangnaq**
- **David Toolooktook Sr.**
- **Andrea Phillips (Youth Rep.)**

**Interpreters: Alexander Alooq, Michael Haqpi (for part)**

**Facilitator: Page Burt, Outcrop Ltd., Rankin Inlet.**

**Agnico Eagle Mines rep.: Ryan Vanengen**

## **POSSIBLE ACTION ITEMS FROM CLARC SESSION**

- 1) Communicate with the Lands Dept. at KIA to **see if some of their raw placename data can be obtained** to add to info obtained in these workshops, at least lake and stream names.
- 2) **Consider the HTO list of concerns**, which was brought out in both the CLARC session and the HTO session. Is there anything that needs further Agnico Eagle attention, research, or effort?
- 3) Since this session did not contribute much traditional knowledge information, **consider another session that invites traditional knowledge sharing from both the HTO and CLARC**. Make sure KIA staff are present and involved in the note-taking, and to keep members on track.

## **NOTES from the session.**

**Ryan Vanengen** tried to present a short summary of the project to date.

Essentially, we did not even really get to the questions planned.

They said, “There’s not even anyone from KIA to take notes here – why is there no one from KIA?”

**Page Burt** replied that KIA had been informed about the dates and agreed to send staff, Jeff Hart and Charlie Tautuajuk at least. But then Jeff Hart informed us he’d be out of town, and that Charlie would handle it. But Charlie did not show up. We would have very much preferred to have KIA staff also taking notes, but Ryan’s and Page’s notes will have to suffice.

Each person from the CLARC had in front of them a one page document with concerns outlined. This was provided by the Baker Lake HTO representative. (Scans of this document are attached, in English and Inuktitut.)

**Joan Scottie** began with questions and comments, essentially following the document.

They are most concerned with:

- Consultation with community and Elders prior to obtaining permission to build this road.
- Destruction of cultural sites due to the routing of the road and the borrow pits.
- Dust along the Baker Lake to Meadowbank road.
- Consultation of Elders about specific sites along the Amaruq Road.
- Consultation with the community prior to approval to construct the Amaruq road.



## Issues related to cultural sites.

**Ryan Vanengen** explained the consultation with Elders that was held in Dec. 2014, and also the fact that Agnico Eagle followed the suggestions in that workshop and took several Elders out to the sites (accompanied by the archaeologists that were doing the field work) last summer.

He explained that they had discussed the buffer zones around graves in the Whale Tail Lake area and that a 500 m buffer was discussed and that a 150 – 200 m buffer was discussed with the people in the field at the site. They committed to a 200 m (diameter) for any gravesite.

Archaeological field work was performed along the entire road route in summer of 2014 and 2015. All archaeological sites were marked and recorded, assigned Borden numbers. Importance values were assigned to each site. Then all sites were plotted on a map and the road was rerouted to avoid all but a couple structures on one borrow area esker#2. To AEMs knowledge, these were determined to have a recent tent ring and a small storage cache, plus one hearth. The material from this borrow pit is needed for that section of road. It is the only site along the entire Amaruq road that will be “mitigated”, which means it will be carefully studied, all rocks numbered, photographed, and moved/reconstructed on similar terrain nearby. The Heritage Committee will be consulted about this as it could be moved to close to the heritage centre in Baker where it could be more easily used for teaching.

Ryan explained **eskers** and **borrow pits**.

An **esker** is a sand and gravel (and often cobble) ridge that was deposited by water flowing from the face of the continental ice sheet as it melted back, about 8,000 years ago. These form long ridges on the land, and the sand and gravel makes good building material for roads. (There is some confusion here as the construction people refer to borrow pits as “Eskers”, referring to the pit or *pit location* rather than the geomorphological structure.) In the past, long ago people tended to camp on eskers as they were above the level of the surrounding land, well-drained, and allowed them to see game coming. Caribou migrate along eskers and animals that dig dens tend to make the dens in the eskers, so these structures are important to wildlife and are preserved if possible. However, there are a lot in the Kivalliq Region, enough that some can be used as a source of building material.

**Borrow pits** are the places on an esker where gravel is removed for road building purposes. They dig a 2 m deep pit, then another 2 m depth, then 2 m more until they reach the bottom of the sand/gravel material; or until enough material has been taken to build the section of the road. Esker #2, pits A & B is important as it will be used to build a long stretch of road which has also to be diverted from the shortest route to avoid having to cross many watercourses and lakes.

Michael Haqpi and Lauren Nakoolak participated in wildlife studies along the entire road route. Michael participated in many of the archaeological studies.

Agnico Eagle provides a 30-50 m buffer to an archaeological site. They CHANGED the road route (in MANY places) to avoid sites and allow this once the archaeological work was done. This was accepted by the NIRB and NWB.

**Thomas Anirniq:** many historical/cultural sites were places where the people prepared skins or got ready for winter.

**Andrea Phillips:** Could students visit these sites if the road is built and we could access them? This would help the youth learn more about their culture.

**Thomas Anirniq:** Yes, and the Elders would be glad to help and glad to share what they know.

**About this time, we broke for lunch. People ate lunch in the restaurant, and did not leave. We reconvened about 1:30 pm.**

**Jamie Seeteenak** (I think): Thomas Elytook and Thomas Anirniq suggested moving some pegs (originally used to stake out caribou skins) that are near or in the proposed road route. These have likely been there since the 1940s, and should be preserved. [NOTE: Not sure if these are the ones referred to in the Esker 2 borrow pit or others.]

**Joan Scottie:** Are these the only maps? (We were looking at two maps prepared by Golder that show the Traditional Knowledge items mentioned in Dec. 2014 as well as a few names and info from the TK baseline for Meadowbank Mine.) She stated that there should be more maps, and that many committees are contributing to the mapping. These should all combine maps.

**Page Burt:** Yes, several committees are interested in this and KIA is working with local people on placenames and info for several different watersheds. KIA is willing to share their info, but it takes time to get the info from different groups and to make sure it is correctly displayed on maps. Only then can you start combining maps. This will come. We have a meeting with the team of Elders that worked to create these maps in 2014, to be held on Friday, Feb. 5 to confirm the info on the maps and allow them to add data.

**Jamie Seeteenak:** Were Elders who lived there properly consulted in 2014? This discussion might not be needed if they had been properly consulted.

**Page Burt:** Back in the fall of 2014, we asked Charlie Tautuajuk and CLARC and others in town to suggest Elders who lived or traveled between the Back River and the Meadowbank Mine. We were very specific about the need for people with actual living experience in that specific area. Michael Haqqi and Charlie worked together on this. They identified about 16 people – but some were not available for the meeting

held in Dec. 2014. We ended up with a group of 10 Elders, all of whom had spent significant time in the area. These worked very hard for two days to answer many questions and to get lots of information on maps and on Google Earth, which was then transferred to maps. Those meetings resulted in a Report which has been used constantly by Agnico Eagle to guide the development of the road project. They will be meeting again on Friday to check maps and confirm information.

### **Issues regarding dust from the Baker Lake to Meadowbank road use.**

The meeting then got diverted into dust concerns.

**Joan Scottie:** Dust is a major concern and a major issue. We want to talk about this.

**Mike Akilak:** Dust is a big concern! Guys hunting caribou along the road now have to put down tarps when they cut up a caribou, as there is so much dust on the land. If they put the meat on the ground (tundra), it picks up lots of dust. (Mike was quite passionate about this.)

**Ryan Vanengen:** We know dust is a concern. We monitor dust on the mine roads where there is no community traffic, only mine traffic and on the AWAR road. We focus our dust suppression where there is heaviest traffic (near the mine site).

**Thomas Anirniq:** Dust goes very far in winter. The winds are higher and you can see the dust on the snow. It is carried far from the road. Need to measure the accumulation of dust in winter as well as in summer. On snow, dust accumulates in layers – one layer, then a new snowfall accumulation, then another layer of dust. Each time period is different.

**Joan Scottie:** We are concerned about the dust because of pending meetings. Was talking to a guy who uses the road a lot – he has never seen any water trucks on the road. They use CaCl on roads in town, but we are told the CaCl is an environmental problem.

**Ryan Vanengen:** We monitor the public road. We use Alberta guidelines for amounts of dust, and if it exceeds the amount allowed by regulators, AEM will consider dust suppressants. It is important to know that water evaporates quickly, so AEM needs to focus on areas of most concern around the mine site.

**Ryan Vanengen:** Explained how they sample for dust. They place canisters out, in transects at 50 m. from the road, for 30 days, in August when the dust is worst (driest and most traffic), then analyze the samples. He explained the technical aspects of how the samples are analyzed. Also sample non-dust areas (upwind, beyond the dust accumulation areas) by vegetation sampling for contaminant loading.

**Ryan Vanengen:** Sometimes the dust is above Alberta levels within 50 m. of the road, but not often, and not beyond 150 m. So, we have not been required to suppress it.

**Thomas Anirniq:** For several years, when hunting, I have observed the road for several hours from the tops of hills. There is a LOT of dust, and it travels very far. Maybe need to monitor more. Need to treat for dust.

**Mike Akilak:** Clarified Thomas' answer.....

**Ryan Vanengen:** There are a couple ways to reduce dust.

- Can spray with water, but this lasts only minutes in the dry summer. Water trucks use lots of fuel, and also emit contaminants, plus there is the risk of fuel spills and wildlife collisions. It is very costly and really doesn't work.
- Can use calcium chloride (CaCl), which draws water out of the air onto the crystals on the road, wetting down the dust. The CaCl will contaminate water over time. It is a salt, so may attract caribou to the road. The effects on caribou are not known, but this certainly puts them in danger of being hit.
- In town, they use CaCl – is there another method of dust suppression that would be acceptable to the community?

**Thomas Anirniq:** Is CaCl the only solution?

**Ryan Vanengen:** There are other products, but their environmental effects are not well known.

**Joan Scottie:** The concern is that the dust issue is not resolved for the original road. People who live here have their own ways of measuring effects on wildlife. They see that animals that used to be in certain areas, feeding, are no longer feeding in these areas. They don't stick around anymore in areas that used to be their habitat. Our hunters do caching in Sept. and Oct., but now say there is a film of dust on the rocks, and this gets onto the meat, so they don't cache meat anymore. We have only 10 years of data. Would like to know what effect this has on plants and caribou feeding.

### **Other issues.**

**Joan Scottie:** The HTO asked for the donation of a seacan in which meat could be stored, and Joan has asked for one in return for all the extra hours she has put in on this project. Is Agnico Eagle willing to donate two seacans for the use of hunters? What do we get out of this?

**Ryan Vanengen:** Will look into this. Seems a reasonable request.

Question: What does Agnico Eagle do when caribou are on the road?

**Ryan Vanengen:** Our policy is clear: We monitor the collar data for this herd. When the collar data indicates that caribou are in the area, then Security tells all staff to watch out and report ANY sightings of caribou. When it seems as though the collar data shows caribou in the immediate vicinity of the road, we stop the road at night (low visibility). If large herds of caribou are seen crossing the road, we stop the use of the road immediately. Have done so 10 times this year already.

**Basil Quinangnaq:** When I was young, children were not allowed to listen when adults were having deep discussions, so there are some things from the past that he does not know. However, he does know that sometimes caribou will stop, and at other times, nothing will stop them.

**NOTE from Page Burt:** It was pretty obvious that we were simply not going to get into the traditional knowledge with this group, so we awarded prizes and closed the session.

#### Questions that could be used for further info:

**NOTE from Page Burt:** I have kept the proposed questions that were intended to be asked in this session in the document below in hopes that there may be an opportunity for someone to facilitate a more constructive meeting with the CLARC, perhaps with more KIA staff involvement. These people are knowledgeable, and could contribute much, but this meeting got derailed with issues that were better discussed in a forum not focusing on traditional knowledge. It would be helpful to be able to go back and facilitate a combined meeting with the CLARC and the HTO on traditional knowledge as it accesses a slightly younger group of people (than the Elders' group) with a specialized interest in the land, animals and the environment.

Questions may not be asked precisely as noted, but will try to cover these topics. May be modified to go with the flow of the conversations.

- 1) Do you have any comments based on what you know about the work done last year or during the summer of 2015 to obtain input from Elders who have lived in or travelled through the area to the NW of the Meadowbank project, between the project and the Back River? We focused on people who lived there because we did not want to repeat the work already done for the main Meadowbank project.
- 2) Are you aware of any people who are currently hunting or fishing in the area *between the Back and the MB mine*? At what time of year?

If no one is using that area, we will ask general questions.

If there *are* people currently using this area, we encourage you to add info to the maps.

#### **Caribou.**

1. Do you have recent information (within the last 5-10 years, and **especially the last year**) as to the movements of caribou through this area? Mark on the map if possible as to migration routes.
2. To your knowledge, is this area important to caribou:
  - During the calving period?
  - For post-calving aggregations or movements?
  - Is this area important to caribou during the rut?
  - Are there caribou in this area during the winter?
3. Hunting.
  - a. Do you (or others from Baker) *currently* hunt caribou in this general area?
  - b. Do you hunt here more or less than in the past?
  - c. Do people hunt caribou along the Meadowbank Road more or less than in the past?
    - More or less during the seasons when there is no snow?
    - More or less during the seasons when snow is on the ground?
  - d. Are there any caribou **sports hunts** conducted in this area?
  - e. Do people hunt caribou along the esker to the NW of the proposed road route? More or less than in the past, before the existing road was built?
4. In your opinions, have the known caribou migration routes changed in the last ten years? Mark these on the maps if possible....
5. How about general numbers of caribou in the area? Increasing? Decreasing?
6. Do you have any comments about the general health of the caribou herds you see in the area around Baker Lake? Better than in the past? Not as good? Same?
7. What do **you** think is affecting caribou numbers in the Baker Lake area? Across Nunavut?
8. Is a lot of caribou meat being shipped out of Baker this year?
9. Does Meadowbank Mine supply country food (caribou and/or muskox) to people working at the mine? Is it purchased locally?

#### **Muskox.**

1. Are there many musk oxen in the area of interest for this project?

2. Is it a calving area for muskox?
3. Hunting (muskox).
  - a. Do people from the community *currently* hunt muskox in this area?
  - b. Are there sports hunts for muskox conducted in this area? Is there a quota for ox?
4. How have muskox populations in the Baker Lake area changed in the last 10 years?

**Wolves.**

1. Is the area (between the MB mine and the Back River) important for wolves?
2. Which parts of the area under consideration? (Mark on map...)
3. For what purpose? Denning? Hunting?
4. Do wolves move through the area at any specific times of the year? (Mark on map if possible.)
5. Hunting of wolves.
  - a. Do people from Baker Lake currently hunt wolves here?
  - b. Run sports hunts for wolves in this area?
6. What concerns do you have about wolf populations in this area?

**Bears.**

We heard from the Elders last year that grizzlies are much more common now in the Baker Lake area and that bears and wolverines are often getting into caches, so much so that people are no longer caching much.

1. Do you agree with this? Are they a problem to hunters in storing food out on the land?
2. Do you think grizzlies are increasing in the area?
3. Do you think grizzlies are currently having an impact on the caribou? On musk oxen?
4. What about polar bears – are you seeing any? More or fewer than in the past?
5. Want to talk about your concerns re bears?
6. Hunting (bears):
  - a. Do many people from Baker hunt bears these days? Is there a quota for grizzlies?
  - b. Are sports hunts for bears being run out of Baker Lake?

**Furbearers.**

1. Are any people still doing any trapping? What species are being trapped out of Baker?
  - a. White fox
  - b. Red fox
  - c. Wolverine
  - d. Marten?
  - e. Mink?
  - f. Anything else?
2. What about the populations of fur animals – larger or smaller than in the past? Easier or more difficult to trap?
3. When fur is prime, is it as good as it was in the past? Better?
4. What about prices for fur – good, poor? Do more people want to trap today than 5 years ago?
5. Any other comments about fur animals?

**Small mammals – rabbits, siksiks.....**

1. Arctic hares
  - a. Does anyone in Baker Lake still hunt arctic hares?
  - b. What about the hare populations this year – is it a high or low hare year?
2. Siksiks
  - a. Are these as common as in the past? Any changes in their populations over the past 10 years?
  - b. Does anyone still trap these for food or for their skins?
3. Voles and lemmings.
  - a. Do you see more or fewer of these little rodents than in the past?
  - b. Are their cycles still as evident as in the past? More voles than lemmings these days?
  - c. Any more you wish to share re small mammals?



## **Fish.**

1. What do people currently fish for in the inland lakes near the Meadowbank and Amaruq projects?  
(What fish species?)
  - a. Lake trout
  - b. Char
  - c. Whitefish (1 or 2 species?)
  - d. Grayling
  - e. Anything else?
2. What time(s) of the year? (for each species)
3. Today, are there large fish in the lakes in the area between the Back and Meadowbank?
4. What species? How large?
5. Have you seen changes in the fish population in the past 10 years? What type of changes?
6. Is Meadowbank Mine purchasing fish for food use at site? Who are they buying fish from?
  - a. Is this working well?
  - b. Are changes needed to this policy?

## **Birds.**

1. **Waterfowl**
  - a. Does anyone currently hunt waterfowl in the area *near Amaruq*? What time of year?
  - b. What about waterfowl populations? Increasing, decreasing, staying the same?
  - c. Any comments about the populations of ducks, geese, swans, sandhill cranes....?
2. **Ptarmigan**
  - a. Do people hunt ptarmigan in the Amaruq area on a regular basis, today?
  - b. What is happening with the populations of ptarmigan – more or less common than 10 years ago?
  - c. Any comments about ptarmigan?
3. **Raptors** - hawks, falcons, eagles, and let's include jaegers in this.....
  - a. How do you think these populations are changing? More.....less?

- b. Are we in a high lemming year? Low?
- c. Any thoughts on these birds and how they are doing in the North?

#### **4. Sandhill cranes**

- a. Do you think the populations of these birds are changing?
- b. Are sandhill cranes still used by Inuit in the area at all?

#### **Insects and invertebrates.**

1. Have you seen changes in the populations of insects and other small invertebrates in the past 10 years?
  - a. What type of changes?
  - b. Are there new species showing up?
2. More wasps? Butterflies? Large moths?
3. What about pesky insects – mosquitoes and blackflies?
  - a. More or less than in the past?
  - b. Is there a change in times when they are common? When is the worst time for blackflies?
  - c. Can you predict when there will be a bad blackfly year? How do you know?

#### **Berries and other plants**

1. Are berries picked in the area between the Back River and Meadowbank Mine?
2. What kinds of berries?
3. Are any other plants taken for use by local people?
4. How do people access these areas for berrypicking?

#### **Weather and climate**

1. What changes have you observed in the weather over the past 10 years?
  - a. More snowfall or rain? Changes in breakup or freezeup? More violent weather – thunderstorms?
  - b. More blizzards, fewer blizzards?

- c. Changes in direction of prevailing winds?
  - d. More freezing/thawing/freezing in spring or fall?
  - e. Changes in snow depth and accumulation?
2. Any other climate or weather changes you would like to mention?
  3. The Elders mentioned observing changes in where the sun rises and sets, and in where the stars move. Any comments on this – have you observed this as well?

### **Water quality**

1. Have you seen any major changes to the quality of the water (in areas away from the immediate vicinity of Baker Lake) out on the land?
  - a. What type of changes?
  - b. Over what period of time?
2. How do you decide if the water out on the land is good for human use?
3. How can you tell if you should NOT use the water from a certain source?

### **Working with Agnico Eagle....**

Realizing that mining by its very nature causes some permanent damage to the land....and that there are trade-offs to economic benefits vs. environmental changes.....

1. Do you have any general recommendations for Agnico Eagle about how to manage the land and reduce damage to the environment?
2. About how to maximize benefits to the community?
3. About creating a comfortable working environment for Inuit?
4. Are there any questions you would like to ask the Agnico Eagle staff about Meadowbank and how Amaruq fits into the lifespan of the Meadowbank Mine?

Any other issues you would like to discuss today?

Deepest thanks for all contributions today, and for all your insights.

Sign forms and distribute honoraria.

## HUNTERS AND TRAPPERS ORGANIZATION (HTO) MEETING

### NOTES from Consultation: Amaruq and Whale Tail Pit Project

Feb. 4, 2016, Thursday, 6:30 pm – 9 pm

Iglu Hotel Conference Room, Baker Lake

#### ATTENDING: HTO Members:

- Jamie Seeteenak
- Thomas Anirniq
- Mike Akilak
- Joan Scottie
- Basil Quinangnaq
- David Toolooktook Sr.

Interpreter: Alex Alooq

Representing Agnico Eagle: Ryan Vanengan, Jamie Kataluk

Facilitator: Page Burt, Outcrop Ltd., Rankin Inlet.

#### Discussion items in the meeting:

After an opening prayer and introductions, **Page Burt** gave a brief summary of work leading up to this set of workshops and focus groups in Baker Lake, noting that the full report from 2014 had been sent to the CLARC and the HTO in Baker. **Ryan Vanengen** gave a brief intro to the project as it stands today.

Page mentioned that we would like **members of the HTO to add to the info in the report and would like their input on places noted on the maps provided, and additions to the info on the maps.**

**Jamie Kataluk** discussed the wildlife surveys that have been done along the road, approximately twice a week when the collar data indicate that any caribou are in the area. 79 surveys were done in 2015 and 5 have been done so far in 2016. He mentioned that they close the road when caribou are in the vicinity. When the collar data indicates that the caribou are in the area, they go on alert and all drivers watch for caribou, reporting any sightings. If they see caribou close to the road in significant numbers, the road is closed until the collar data indicates the caribou have passed. They have closed the road between Meadowbank and the Vault pit several times in 2016 already.

The harvest study has been suspended for 2016 and will be discussed with the community and the HTO to make it more “community-based”.

**Thomas Anirniq:** When constructing the road from Vault to Amaruq, will they stop construction for caribou?

**Ryan Vanengen:** Construction vehicles don’t move very fast. We will use the collar data to determine the location of the herds, will go on alert and watch carefully when any are in the area. We will stop

construction if there are a lot of caribou in the area, but not for just a few, but there will be extra alerts to their presence if the collaring data indicates caribou herds are nearby.

**Thomas Anirniq:** When they constructed the Meadowbank road, would see caribou around the area. How long will construction take? During what season?

**Ryan:** Construction will start this winter/early spring, in March. We will aim for completion in 2018. Will aim to complete the road to “Esker #1” (borrow esker # 1 along the road) using waste rock material from the Vault pit before summer. Bridges will arrive this shipping season and will be used to construct the rest of the road to the north. Construction will start again in October. Construction is easier and less destructive in winter. Much of the timing depends on the stream crossings.

**Concern was expressed by several people about archaeological sites along the road corridor.**

**Ryan:** Explanation of road revisions.

- Ryan stated that the road route and design was significantly modified to avoid most archaeological sites along the road, and this constituted a major modification of the route. This was done after the archaeological studies were done last summer, and after Elders and HTO members were taken out to the site in the fall.
- All sites designated “high value” by Elders or the archaeologists are being avoided in the road design. “High value” sites are those with older tentrings, many tentrings, many different structures (storage caches, inuksuit, drying racks, qajaq racks, tool-making spots, hearths, hunting blinds (taluit), etc.). Graves in particular are being avoided, with a buffer zone of 200 m diameter.
- The only exception (where structures need to be moved) is Borrow Pit Esker #2, where there are a few structures in one site (tent ring, storage cache, and one hunting blind, plus a few wooden pegs possibly used to stake caribou skins out for scraping). With consultation with a local Cultural and Heritage Group, this site will be “mitigated”, either removed and reconstructed nearby or removed and reconstructed near the cultural centre in Baker Lake.

This caused a lot of overlapping, somewhat passionate, discussion.

They asked what “mitigating” a site meant.

**Ryan asked Page to explain:** Roughly (and in layman’s terms) it means doing an organized survey of the site, photographing from above and sides and mapping everything, then numbering all rocks or items and removing them, possibly doing shallow excavations to ensure that *all* artifacts are found/removed. With the photos and maps, it is possible to reconstruct the site in a similar terrain area, exactly as found, for teaching use. It could be reconstructed in the same area, outside of the borrow pit. Or, it could be reconstructed in Baker Lake, where it could be used for teaching purposes, near the cultural centre, the visitors’ centre, or the school.

**General comments from members of the HTO** demonstrated the high level of concern among the participants:

- The people who lived there have the best knowledge of the area and of the way forward.
- Go around *every* site.
- What would you feel if Inuit went to Manitoba and moved the graves of your families? (Ryan mentioned that this occasionally happens in the south, due to changing plans for cities and priorities of construction. Whole cemeteries are frequently moved.)

**David Toolooktook, Sr :** We are concerned about all historical and archaeological sites. Don't buy the idea of moving a site. It will no longer be an archaeological site.

**Basil Quinangnaq:** We were taught not to touch anything which looked like a place where people lived. To respect it and keep our distance.

**Mike Akilak:** Grew up on the land with his grandmother. Lots happened out there on the land, and it is our heritage. Needs to be preserved.

**Ryan:** In the meetings at the mine last fall and out on the land, what we heard was that for some sites there is a high level of concern, and that for some, the level of concern is less. Some are fairly recent and temporary hunting camps or camp sites.

**Ryan:** Brief discussion of the Whale Tail Pit project.

- Ryan showed maps of the proposed construction areas, mining areas and described the process. Pit design is still being done. Roughly, there will be a pit, a ramp to an underground shaft/tunnel area, a pond to contain water removed from the pit that may be in some way contaminated, a waste rock tailings area, and access roads.
- They will build a dam across part of Whale Tail Lake and remove the water from the lake. When the mining is completed there, the dikes will be breached and the lake will refill.
- There will be support buildings for administration and accommodations, but no mill; the ore will be trucked to Meadowbank and processed there. Many mining jobs will be moved to Whale Tail Pit. Project has the potential to extend the operational life (and thus, employment) of Meadowbank by 3 years of operation. (But this is an estimate, too early to tell.)

**Basil:** Where will the rock be processed?

**Ryan:** Meadowbank Mill. Processing facility will not be moved. But there is still a waste rock pile because you have to remove the "overburden" (non-ore-bearing rock) to get to the ore-bearing rock.

**Ryan: Fisheries habitat improvement as offsetting.**

- There are fish in Whale Tail Lake. Not a lot compared to larger lakes (such as Baker Lake), but since part of this lake will be drained, Agnico Eagle is required by DFO to create habitat for fish to offset the destruction of habitat in that lake.
- There are a few ideas he would like to mention to this group:
  - Baker Lake has a very old holding pond and wetland sewage system and it is badly clogged. Sewage runs over the top of the ground and into a small pond, then down a channel into a larger (but still small) lake and then into Airplane Lake. These lakes used to be clean, but now are contaminated due to unprocessed sewage. From Airplane Lake, sewage flows into Baker Lake, only about a mile from the fresh water intake. This is a potential hazard.
  - Agnico Eagle could partner and assist the hamlet and GN in providing research and funding for the design, and labour to create a new “passive sewage treatment area” that is far better than the old one, could clean out the old area so that it will regenerate, and the small pond will clean up over time. Fish health could be restored in Airplane Lake. The water flowing into the lake would be cleaner, thus reducing the hazards to Baker Lake water intake and the quality of the water used in the community.

People came forth with a few other ideas. Some are related to fish habitat.

**Mike:** In the spring, there is a lot of junk on the ice in front of the community. We clean this up, using skidoos, etc. He encourages students to help. Maybe we could get help with this cleanup?

**Ryan:** Definitely. That is related to fish habitat and water quality. We would like to encourage young people to get involved as well. We can talk further about just what is needed.

**Jamie Kataluk:** We need a bigger, longer runway.

**Jamie Seeteenak:** The camp buildings at closure could be brought here and could be made into another school or a daycare..... We need a larger community complex.

**Thomas:** Educate the people here and they will plan for the future.....

**Ryan:** The projects we are talking about here need to relate to fisheries and fish habitat improvement since DFO is involved. We have some leeway but not a lot.

**Jamie Seeteenak:** The HTO has requested the donation of a seacan for use by the HTO and community and perhaps one for Joan's use due to all the time she has spent on these projects. These will be used to store caribou meat in the fall, after freezeup. People no longer can cache meat on the land due to dust from the road, grizzlies and wolverines, so they could bring the meat back here and store it.

**Thomas:** Were these guys involved in the selection of the road route? Some of us really don't agree with what you want to do for the road.

**Joan Scottie:** When we learned there was to be a meeting, we made a list of five concerns. These are based on letters the Baker Lake HTO sent to NIRB. (These are reported from her statements. We also have the document that the HTO used in the meeting.)

### **1) Timing of the consultation meetings**

**Joan:** The HTO wanted consultation to happen before permission was granted, but this did not happen.

**Ryan:** Consultation that was done on the road route started in Aug. 2014. Joan did get to visit the mine site. We discussed the road routing at that time. We followed up with meetings in Baker Lake Dec. 2014. And, in March 2015. Document was sent to HTO and to Warren, providing an opportunity to review plans. Elders and HTO members were taken to the minesite in Sept. 2015, and part of that group were taken to several sites along the road and along the big esker. There have been many rounds of consultation over the past 2 years. Permission has been granted by NIRB for building this road.

### **2) Road route.**

**Joan:** Baker Lake HTO has requested movement of the road route because current route goes near many sites and near the wolf denning esker. Agnico Eagle has agreed to small changes in the road route, but these are not sufficient.

**Ryan:** The changes to the road route *are* significant and the final proposed route has avoided all but one area. As discussed the Borrow Esker #2 was classified as a site of minor importance by the AEM archaeologist and elders during the visit.

### **3) Archaeological and heritage resources.**

**Joan:** The HTO felt that the maps as prepared are incomplete. They want maps that bring together all information.

**Ryan:** Intent **of this series of meetings** is to **add info from the Elders and the HTO and CLARC to those maps**, check the maps, and the maps will be updated. (Note that the maps are marked DRAFT.) The meeting with the Elders in Dec. 2014 was a classroom exercise to get as much info on the map, along with placenames, and to record as much info on wildlife, the land and life in the past as possible. This was done and is in the report. The archaeologists (who were accompanied by Michael Haqpi) did the ground work along the entire route to identify and mark ALL archaeological sites. Revisions to the route were made based on info (and concerns) expressed by the Elders and the info collected by the archaeological team.

**Note from Page Burt:** KIA has also collected much TK/IQ information in the Baker Lake area, including many placenames. They do not seem to have any objection to sharing this information, but it is not readily available yet. Perhaps a separate map of the originally planned road route, based on engineering parameters could be made, and the map overlaid with a map



of the road as it was changed based on archaeological and cultural site data. This will show people that changes were indeed made.

#### **4) Buffer zones for gravesites.**

**Joan:** The HTO wanted Agnico Eagle to leave a 500 m buffer zone around gravesites. Agnico Eagle has made this buffer zone much smaller.

**Ryan:** Described what a 200 m (diameter) buffer zone really looks like. It is a greater distance than people might think.

#### **5) Dust and dust suppression.**

**Joan:** The Baker Lake HTO has repeatedly requested dust suppression along the present road. Agnico Eagle has not done any dust suppression at all on this road. People who hunt off the road are finding that the vegetation in many areas is covered with dust, and are using tarps to butcher their caribou to protect the meat from dust. Perhaps Agnico Eagle could agree to do some dust suppression in the main hunting areas along the road, like at Whitehills Lake.....

**Ryan:** We discussed dust suppression in detail in the CLARC meeting today, and agreed not to spend a lot of time on it in this meeting. CaCl can't be used as it gets into the water and can cause problems. Watering the road has only a transitory effect, and has adverse environmental effects such as emissions, fuel use, possible fuel spills, etc.

**Mike Akilak:** You probably used big words to describe this in previous meetings and we did not understand what we were agreeing to.....

**David Toolooktook, Sr.:** I think we are here only to listen to you saying you are going ahead with this project as you wish, no matter what we say we want.

**Ryan:** We want to share information as to where we are with the project. Want it to be as low impact as possible for the community. However, now we would like to talk a bit about the wildlife and environment.

Took a break here to defuse the situation and to change topics back to the intent of what was intended to be a TK/IQ workshop but turned into a meeting.

**Page:** What about caribou? Are you seeing changes in the numbers of caribou coming through, the timing, directions of migration, changes in health of the caribou?

**Thomas Anirniq:** My family lived in the area around Amaruq and a bit further north. My parents and other relatives died there in the starvation years. I lived with an elder brother. Those were difficult times for all of us.

**Mike Akilak:** The group did not visit Thomas' mother or father's graves this year. They are not in the area where the helicopter landed. He wanted to go and place crosses on the graves. Still would like to do that – is there any chance AEM would support this?

**Ryan:** Probably could do this. Page to email Jennifer Tischer (archaeologist) to do this in the summer of 2016, to contact Thomas through Basil Quinangnaq at 867-793-2620 or 793-2564 or at the HTO: 867-793-1412.

**Thomas:** Caribou around camps are becoming used to people and noise. They also seem to be attracted to blasting, come into the area right after the blast, and feed. Maybe the blast releases a food smell.

**Page:** Possibly salt – many explosives are high in salts.

**Thomas:** Caribou tend to run off when you shoot, but then come right back.

At this point, we simply ran out of time as people were getting weary.

We did not get much actual usable TK info in these sessions today.

**WOMEN'S FOCUS GROUP SESSION**  
**NOTES from Consultation – Amaruq and Whale Tail Pit Project**  
**Feb. 3, 2016, Iglu Hotel, Baker Lake**

**AGENDA**

- Prayer, introductions of all participants, including research team.
- We met last December with Elders, regarding their knowledge about the area to the NW of Meadowbank, between the Back River and MB Mine. They shared their knowledge generously and it has been extremely valuable. **Agnico Eagle has ensured that the resulting report has become a guiding document for all work to be done in that area.** The company deeply appreciates all the work done last year in contributing to knowledge of the area, and has taken the Elders' suggestions seriously.
- Now, we are expanding the circle and doing meetings with several groups in the community to get input regarding the area and the project. Will be talking with youth, the HTO, CLARC, as well as the Elders involved last year.
- We have release forms that we will ask you to sign, so we can use the info you have provided.
- You will be paid an honorarium for participating in this group.
- Any questions about the procedure?
- Housekeeping, washrooms, refreshments, prizes, etc.

**Ryan can't make it to this session, so Page will give a very brief, very general outline of what is happening regarding Amaruq/Whale Tail and the proposed road.**

**There will be community meetings held at which you can ask questions of company representatives.**

**PRESENT:**

- **Annie Tootoo**
- **Jean Simailak**
- **Eloza Piryuaq**
- **Martha Haqpi**
- **Susan Amagoak-Walsh**
- **Sarah Peryoar**
- **Chantelle Tunguaq**
- **Cynthia Tiapanak**
- **Interpreters: Alexander Alooq, Michael Haqpi**
- **Facilitator: Page Burt, Outcrop Ltd., Rankin Inlet.**

## NOTES from the focus group/consultation:

People will be encouraged to speak as they wish, but these questions can be used if there isn't much coming from the group. Initial questions are to "break the ice" and start the conversation.

1. Does anyone in this group currently work at Meadowbank or Meliadine?

No one present currently works at either operation.

(Note from Page: We had tried to get some women who currently work for Agnico Eagle, but they were either out of town or we could not contact them. We had contacted Inuit HR, but they said they could not release any names. In future, it is suggested that we need more company awareness that this type of work is going on.)

2. Has anyone worked there in the past, or at an exploration camp?

Jean Simailak has done counseling out there.

Eloza and Annie used to work as housekeepers.

Michael Haqpi: Liaison and environmental tech.

3. What type of jobs?

List types based on comments from participants.

Counsellor

Housekeeping

4. Are you currently employed at MB? What type of job?

No one in the group is currently employed by Agnico Eagle.

5. How many of you have family working at a mining project, either an exploration camp or Meadowbank? (Show hands)

Jean has a niece working at MB,

Susan's son and brothers work there, son as supervisor/trainer, 2 brothers in heavy equipment operations.

Others all had relatives working out at MB.

What type of jobs?

- Dishwashing
- Housekeeping
- Mechanics

- Haul truck drivers
- Truck drivers
- Environmental tech
- Liaison ( not sure of this)

6. How many of you have visited Meadowbank?

About half the group had visited. Mostly on tours.

7. How many have driven on the road to MB?

All had driven all or part of the road. Most had not been all the way to the mine (due to second gatehouse.)

Some had been on tours.

8. How do you feel that the operation of the Meadowbank Mine is **benefiting** your community?

- Financially
- Jobs
- People are happier
- People able to buy cars, trucks, toys.
- People are able to help their extended families when they have work/salary.
- People are getting trained in careers, like heavy equipment operation or mechanics. They have much more self-esteem.
- People who applied to AEM but did not get jobs now are better able to get jobs in town, and are now being reconsidered for work at the mine.
- People learn about safety. Once they learn to apply this at the mine, they transfer safety concerns back to the community. This is badly needed.
- Use of the mine road for hunting. Access to much more land, more easily, also safety factor of trucks passing if anyone is in trouble – they just need to get to the road, and can find someone to help them.
- Road is used for search & rescue purposes.
- People learn that they have abilities that are valued. This helps them.
- Following the example of Agnico Eagle, we are learning that we must look after our environment. This is needed in Baker and on the land. We see that they clean things up; we must do the same.
- Agnico Eagle sponsors things in the community. It is appreciated.
- A lot of good things have happened. People in Baker would have liked to have been more involved in the planning for the mine and operation, but weren't. Maybe more involvement in the future?

9. What **negative effects** is the operation of this mine having in your community?

- Dust
- Lots of trucks hauling gravel
- Increased use of alcohol, binge drinking, bootleggers doing well. (Susan)
- Unfaithfulness on the part of workers, due to fooling around at the mine. (Jean, Susan; both have known people with problems with this.)
- Difficulty getting enough time off to attend funerals, sometimes needed at home for longer time than allowed by the company. (Annie, Susan, Sarah)
- Being absent from your kids for a long time (Chantelle)
- People (parents) away from their homes for long periods, in some cases using children and elders to babysit while away at work. (Jean)
- Relationships sometimes strained by the partner being away, then needing the time at home to decompress. Sometimes when on break, the partner doesn't help around the home, says "too tired". Doesn't participate. (Annie)
- Some (many?) historical sites covered.

10. In what ways do you feel that Agnico Eagle could lessen these negative effects?

- The company has already solved a number of problems, such as the problem of staff speaking French only, and people are grateful for this.
- Communications are better, between southern staff and northerners/Inuit.
- Extend bereavement leave for immediate family members of a deceased person.
- Qilautimiut was asking Agnico Eagle to move the gatehouse further out the road for the convenience of hunters, etc.
  - The water at the current gatehouse is very good. If the gatehouse is moved, more elders can get at the water.
  - Also, the gatehouse occupies a place where hunters used to gather to watch for caribou – they need this view for hunting.

11. How do you feel about Inuit women working at the mine?

No one had any clear problems about this. Seem to be used to it, now.

It's good, if they can get a job. (Sarah)

It is good for women to work if spouse is unable to work (for any reason).

Daughter had a problem understanding the French staff, not only accent, but how they communicate and think. She found it difficult. (Susan)

Generally, feeling was that having women at the minesite has a positive effect.

12. There are a number of women working there now. In your opinion, how has this worked out?

It is working better now than in previous years.

Some concern over syllabics – this wasn't explained well – perhaps would like more bilingual signage or to make sure that the Inuktitut used is the Baker dialect. However, the comment was also made that many young people don't read syllabics correctly.

a. To your knowledge, is it a positive experience for them?

Yes, but the hardest part is leaving your kids.

Fewer misunderstandings than in the past.

b. What special problems do they face?

Missing your kids (Susan)

c. Do you have any advice for young Inuit **women** who are considering seeking employment at a mine or starting to work there?

- Build your resume and “go for it”!! (Annie)
- Having a good resume and work experience will help them to find work in the future. (Annie)
- There was general agreement with this.
- People could use more help with resumes in the community, and a better understanding of what Agnico Eagle is looking for. (Jean, Annie)
- Learn to be on time for work. Never be late. (Eloza, and general agreement from others)
- Leave your “attitude” at home. (Annie, and equal general agreement.)
- Understand that it will be hard at first, but will get easier with time. (Jean)
- Don't take rules (or admonishments from mine staff) personally (unless specifically about rule broken, etc.) (Eloza, Martha)
- Keep in mind that there will always be someone you can get along with. Don't isolate yourself. (Annie)
- Don't be afraid to ask for help or an explanation if you don't understand something. (Annie)
- If you have a problem, talk to someone you trust, don't just cover it up. Don't carry your problem alone. (General agreement, nods all around.)
- Leave home problems at home. (Sarah)

- d. If you have worked at Meadowbank, do you have any suggestions as to how the experience could be improved for workers, especially female workers?

No one really had anything to add for this.

- e. How about families – is there more that the *families* should know before a family member starts working at the site or on rotation?

General opinion was that some sort of orientation would be good. Orientation for people that have never worked (like school kids, youth) and an orientation as to how AEM functions and what is expected, how a mine site functions, workplace safety, rules, etc. for all who have enquired about employment there.

- f. Are there any ways we could better prepare young women for work in the mining industry, or for work on rotation?

- Stay in school.
- Get an education.
- When you prepare your resume, take into consideration ALL your abilities and experience – include sewing, hunting, firearms safety, on-the-land skills, ability to operate small equipment, fix/repair/maintain outboards, ATVs, generators, snowmobiles.
- Include references in your resume, don't make employers have to hunt for them. Contact info.

13. Any advice for young Inuit **men** who are considering employment there?

- Keep working, be patient, work to get experience.
- Don't immediately quit when things get difficult. Learn your job.
- Learn patience.

14. Any advice for **spouses and families** of anyone who is starting work at one of the mining projects?

- Ask questions, of the employer, of the person who is working. Show interest.
- Be patient, don't judge.

15. Do you have any suggestions as to how life at the minesite could be made better for Inuit employees?

- Provide more interpretation for those who need it.



- This is most important when seeing the medic. It is important that the person who is sick or injured understands the instructions.
- Trilingual interpretation often needed.
- Get a full-time interpreter on staff, male and female. (A man might not feel very comfortable interpreting if it is a woman who is seeing the medic.)
- Sometimes it is difficult to understand the English when the speaker's accent is strong. This causes problems. Translation often needed.

By this time, it was getting late and enthusiasm was waning.

Thanks to all who participated.

We need the input of people from the community, and hope all would feel free to let us know if you would like to discuss anything regarding the project. See people in the Baker office of Agnico Eagle Mines....

We have an honorarium for each person, but need you to sign a receipt for our accountants.

## FOCUS GROUP FOR YOUTH

### NOTES from Focus Group – Amaruq and Whale Tail Pit Project

Feb. 3, Wednesday, 3:55 – 5:10 PM

#### AGENDA

This focus group is part of the Agnico-Eagle Mines socio-economic baseline work for the Amaruq Road project. We want to talk to people who in the next 1-5 years will be looking for work and developing careers. The intent is to get a dialogue going and to get input from youth as to what they would like to see regarding opportunities, training, or information about work in the mining and related industries. **This session is less about traditional knowledge than about communications; how to communicate with youth, and to get a group of people who could provide a stepping stone into the school culture in Baker.**

#### Parameters for group: (Communicated to Gary Kennedy and the school.)

- High school students (currently attending school on a part or full-time basis)
- Need about 10-12 students.
- Grade 10 – 12. Mixture of males, females, all grades.
- Need a variety of students, from the less academically-motivated to the highly motivated.
- **Try to get students who are willing to talk, and let them know they are *expected* to contribute.**
- Will pay an honorarium for participation in the group. **(To Gary: We can pay students individually, or, if the school has a club that would like to fundraise \$ toward a trip or something, we will do a cheque directly to the group. They chose direct payment to the individual students.)**
- Session will last about 1hr (Start at 3:50. They are out of school at 3:45)
- Can be immediately after school, preferably. Would like to hold it at the high school – could use room in the Library or a classroom.
- We will bring refreshments.
- Teacher or school staff participation or observation is welcomed. (We will pay an honorarium to any teachers as well.)
- We will use **permission forms** (permission to share info gathered in this focus group), and have receipt forms for the honorarium. (Because we ran over a bit and school staff were anxious to leave, we simply had students sign a group list that they had received the honorarium and it was ok to use the material. It takes some time to go through the individual forms, and we did not have that time.)

Because youth are often reluctant to speak out, we ease into this, and some questions just ask for a show of hands, rather than verbal input. If they are not reluctant to speak out, will change the questions slightly.

**Introductions. Team plus students.** Names, what grade in currently, favourite subject in school.

We asked for 15. 21 showed up. I had cash for 17, so the Principal took the first 17 that signed up and we went with that. Enthusiasm was high. They loved the Tim Horton's donuts we brought. The girls were much more verbal than the boys but Alex Alooq stepped in and helped encourage the guys to speak out.

**Research team:** Page Burt, Karen Yip (Karen was the primary note taker for this group), Alex Alooq (translation not needed; students wanted to work in English, so Alex took notes).

**ATTENDING:**

Tyler Aksawnee  
Andrea Phillips  
William Tapatai  
Vincent Inukpak  
Sally Kingalik  
Grace Evviuk  
Maisie Tunguaq  
Tyan Aksawnee  
Jonathan Tootoo

Sondar Ikuutaq  
Bathsheba Evviuk  
Lisa Parker  
Kristin Kanooklook  
Hayley Tagoona  
Ida Aningaas  
Caroline Oman  
Fiona Aningaut

(Ryan was not able to be there, so Page gave a very brief outline of what is being done regarding Amaruq/Whale Tail, etc.)

**General questions re education/lifestyles:**

1) How many in this group think you will finish Grade 12?

16/17 thought they would graduate. One was unsure.

2) Are you getting help with making choices about life beyond school? About career options?

Lots of nods, some "yes" ....

3) How are you getting this help?

- At school?

Counselors, teachers at school.

- Outside of school?

Parents, friends.

- Online searches?

Yes, a few: military, engineering.

- Other? Family, personal mentors, etc.

Some nodded or said “Yes” when I mentioned mentors. Most seemed to know what it meant.

4) Lifestyles:

- What do you do for fun or recreation? Sports? On-line gaming?

Sports, hockey, basketball.

Would do online gaming if the Internet was faster.

- How much time do you spend “online” each day? (This doesn’t count texting.)

All over the place.....

1-2 hrs, 2 hrs, 3 hrs., 3.5 hrs, 4 hrs.

One person said she doesn’t go on at home at all, only at school.

- Doing what? For school? For fun or personal use?

“Mostly for fun.”

Some: For projects. For studying.

- How many have a Facebook page?

Almost ALL!!!

Facebook was the most popular social media site.

Some mentioned:

Twitter 5

Instagram

Snapchat

BBM 6

- How many of you know how to do an internet search? (show of hands)

About 14 hands went up.

How would you start? (verbal input)

SKIPPED THIS, THEY WERE NOT COMFORTABLE ENOUGH TO BE VERBAL YET.

- How many own/use a cell phone? How do cell phones work in Baker Lake?

7-8 (hands)

Cell phones don't work well in Baker.

- How much time do you spend texting per day?

Most said, "Short time" (Must not be as popular as in Rankin!)

5) Lifestyles, and health:

- How many of you feel you lead a healthy lifestyle?

8 mental

8 physical

- How many feel you would like to lead a healthier lifestyle?

Some nods, some shrugs, no real comments.

3 admitted to smoking. (We did not push this.)

- Comments? What would you like to do to see your life become healthier?

More physical activity

Geographically, Baker seems isolated.

- What is your favourite food?

"Traditional foods" 3-6, nods

Maktaaq 1 verbally, 3-4 nods

Pizza 6 (one comment: "Homemade")

- Your favourite traditional food?

Caribou – most, hands and nods

Maktaaq 5

Char 12

- Do you eat traditional foods at home? (Show of hands)

All raised their hands.

Pipsi: 9

Mipku: 12

- What type?

Caribou

- How often?

Every day (comment, and general agreement).

- Less than once a week?
- 1-2 x/week.

Some nods on this.

- More than twice a week.

Couple nods on this.

#### 6) Traditional lifestyles

- Do you hunt? (show of hands)

Yes 9, mostly boys, but a couple girls nodded.

- What do you hunt?

Caribou

- How often?

A few, comments: "often"

Some, comment: "Not during winter"

Comment: "During school trips" (and nods to this)

- Do you get enough meat to share with relatives?

A few: "yes"

- Do you fish? (show hands)

Show of hands: 15

- What time of year?

"Whenever"

- In open water or through the ice?

Open water: 8

Through the ice: 12

With nets: 6

- What fish do you catch?

Trout

Some char

Grayling: "I like grayling" 1 person

- What fish do you keep?

Apparently keep all.

7) Do you like living in Baker Lake? Why or why not?

Most responded affirmatively.

No reasons given.

8) What kind of changes have you seen in Baker since Meadowbank Mine opened?

- More cars
- Less caribou
- More houses
- More out-of-towners
- Using more English than Inuktitut today
- New baseball diamond
- BBQs
- Might need to teach French in school
- More opportunities like Task Week
- Road (10 people have been on the road)

9) How would you like to see Baker change? Or, what changes would you like to see happen in Baker?

- Cleaner roads in summer time
- Cleaner environment in and out of town
- More opportunities for education
- More opportunities for the poor
- More education
- More encouragement to graduate
- More educational opportunities for aboriginals so they can speak for the Inuit
- Paved runway
- Sidewalks
- Get First Air back
- Hospital
- Ambulance
- Bigger swimming pool
- More traditional/cultural opportunities for youth

## Questions re careers and the mining industry:

1) What are you (**and your friends**) thinking re the future beyond school?

Graduate (most)

Have a career

Mechanic (2)

Pilot (girl, said teasingly, "Get paid to go away.")

Military

Building houses and new stuff (maybe "construction")

a. What are your hopes?

Engineer

Physician (2)

Personal trainer (4)

b. What plans are you making?

(Start by inviting general contributions, then go around the group and urge individual statements.)

Go to Nunavut Sivuniksavit 10

Travel the world

2) Do you know anyone who is currently working at either a mine (Meadowbank), or at an exploration camp? (show of hands)

Meadowbank 13

Exploration 0

3) What is the difference between a mine and exploration project?

They did not know.

**NOTE from Page:** This in itself indicates a very real gap. It is very basic. Agnico Eagle could fix this by offering to do presentations or short courses, or workshops for teachers. Start by consulting Kivalliq School Operations so it is a cooperative effort.

- Can you name any operating mines? Producing what?

Meadowbank

Not all knew it produces gold.

- Can you name any exploration projects in Kivalliq?

No one contributed.



Page mentioned Areva, and several recognized the name.

4) Do you know anyone who is working at MB or has worked there? What type of job?

SKIPPED this, asked earlier. They all know people working out there.

No one came up with any job titles, descriptions or ideas.

**NOTE FROM PAGE:** It appears that people working at site may not be communicating to their families or friends about what they do at work. No idea whether this is just a lack of pride in their work or whether they just *do not communicate*. Could be both.

5) Have you ever visited a mine or an exploration project? Which one(s)?

Meadowbank: 4

- What did you want to learn when you went there?

Saw photos of the pits, equipment. Wanted to see it for real.

- What interested you the most about your visit – what do you remember the most?

Long hallways!

Tame wildlife (foxes)

Equipment (large equipment)

6) As we said at the beginning of this session, Agnico-Eagle is considering an expansion to the Meadowbank project, with an all weather road and then development of some deposits called Amaruq and Whale Tail. These could extend the life of MB mine by several years.

- Did you know about this?

No one knew anything about this.

- Where did you hear about this?

SKIPPED

7) How do you think the MB mine has affected Baker Lake?

Land, some land taken by the mine.

Office – in Baker Lake

8) How do you think it has affected the environment of the area to the north of Baker Lake?

The wildlife?

Less caribou, or, less caribou closer to town

Fish?

There haven't been many fish, in all lakes.

Water quality?

Water has changed colour

Dust on the water

We are more hesitant regarding drinking water.

The land?

Dust on plants and land

Roads disturb the land

Foxes and wolverines coming into town

9) Have you heard of the Meliadine Gold Project? Where is it, and what are they doing there?

Yes, heard of it.

10) What kind of jobs do you think exist in the mining industry in the North? Or in serving the industry?

- Housekeeping
- Blasting
- Cook
- Haul truck drivers
- Mechanics
- Drillers
- Smelter
- Ship gold out
- Fuel handling
- Dish pit
- Medics

11) Do any of these jobs interest you? Why? (Go around the group and get individual input if people don't volunteer.)

"Yes" but little input as to what.

First Aid          2 people

**NOTE FROM PAGE:** This indicates another serious educational gap. These students should not be hoping for just what their parents are likely doing, but for a greater variety of jobs. They don't know what is available to them.

12) What kind of concerns would you have about jobs in this industry?

SKIPPED

13) Do you know that most mines are finding that women make better truck drivers than men? Why do you think this is so?

Mentioned this, but little reaction. Some of the girls smiled and pumped fists. (Got much more reaction to this in Rankin.)

- Does this change anything about the way you girls in the group think about the possibilities of working in the industry?

We might work there.....

Drive trucks.....

14) What kind of training do you think you would need to work in a job that interests you? If you don't know, how would you find out?

Not much response, but it was getting late.

15) How many of you have First Aid training or certification? (show of hands)

Maybe 4....

- Which one? (St. John Ambulance, Red Cross?)

SKIPPED

- How many would like to get certified in First Aid? (show of hands)

Many hands went up.

16) How many of you are interested in working at MB?

16 out of the 17 Most hands went up.

17) If the Meliadine Project becomes a mine, are you interested in working there?

SKIPPED, getting late.

18) What is working "on rotation"?

SKIPPED

## Communications and information

1) Would you (personally) like more info on working at a mine or in an exploration camp?

Yes, most would like more.

2) What kind of information?

No input; they really have no idea.

3) What is the best way to communicate to get information to people your age?

Facebook

Email

“Things at school” - probably: events, mini-courses, presentations, guided exploration of AEM websites....

4) How many have your own email address?

Many, almost all hands went up.

**[NOTE FROM PAGE:** This is an opening for communications, and an opportunity to send newsletters to this age group.]

- How many use Twitter?

Not enough to make an effort worthwhile here.

- BBM?
- Texting on cell phones or using mobile devices?

Not many in Baker, cell phones much more popular, or more kids have them, in Rankin.

- Other social media?

Facebook

**[NOTE FROM PAGE:** Could do a special Facebook Agnico Eagle site to appeal to youth and young adults. Then make a real effort to get “Friends”....]

5) How many of you have visited the Agnico Eagle website? (Show hands)

4 had visited it.

- IF Agnico Eagle had a special site on Meadowbank and Meliadine with info on jobs, would you be interested in visiting that site? (hands)

General approval: "Yes, especially if it was done for youth. "

- If it listed job openings, would you keep visiting to learn about new jobs?

Yes, clear general agreement, lots of nods, smiles.

6) If you need a resume to apply for a job, how do you get one?

No response.

- Is there help with this through your school?

Through school.

7) What are "the trades", "journeymen" or "apprenticeships"?

Had to skip through this part pretty fast, running out of time. Asked the question, but little response.

8) Where can you get information about "trades access" or what you need to do to be considered for an apprenticeship?

9) How many of you have visited the Trade School in Rankin Inlet? (hands)

None

- Do you know anyone taking courses there?
  - What type of courses are offered there?
  - Would you like to visit?
  - If you have visited, did any programs or courses interest you? Which ones?
- 10) How many of you have considered going on for more advanced training in other fields, like the sciences, communications, health sciences, etc.? (hands)

About 14 have considered this.

- What interests you? (go around the room)
- Electrical
- Engineering

- Robotics
- Business management

**By this time it was after 5 pm and it was obvious that the teachers and school staff wanted to leave. We had to end.**

- How you would like to get information about jobs and careers and qualifications for jobs?
- How would you like to get info about the mining industry?

11) If visits to the Meadowbank project site were offered, would you like to go? (hands)

- What aspect of the project would you most like to see?

12) Is there anything else you would like to comment on or ask about the Meadowbank Project and the Amaguq Project and proposed road?

Thanks very much for participating. The input of young people is very important and valued. You are the future of your community and of our mine.

We need each of you to sign the list to show we paid your honorarium. Thanks very much.

We got signatures on the list, rather than going through all the forms.

## Major Outstanding Concerns from Baker Lake HTO Regarding Agnico Eagle Mines' Projects Near Baker Lake

- [illegible]

**Major outstanding concerns from Baker Lake HTO regarding Agnico-Eagle Mines' Projects near Baker Lake**

**February 1, 2016**

This list of outstanding concerns is based on letters the Baker Lake HTO sent to NIRB and Agnico-Eagle this fall. If the HTO board has other concerns, it should add them to this list.

- 1) **Timing of consultation meeting** – the HTO board requested that Agnico meet with the HTO and further discuss the Amaruq road project *before* approval was granted. Consultations are much less meaningful when they are carried out after approval has been granted for a project.
- 2) **Route of the Amaruq Road** – The Baker Lake HTO requested Agnico change the route of the Amaruq road a few kilometers to the north. The Baker Lake HTO made this recommendation because the current route goes across and near many archeological sites, and is along a line of eskers which is a traditional walking trail. The eskers are also important wildlife habitat. Agnico has agreed to some small changes in the road route to narrowly avoid some of the archeological sites. However, the route is still planned to destroy several eskers, and possibly some archeological sites.
- 3) **Archeological, heritage resources, and traditional use** – The Baker Lake HTO was disappointed that Agnico-Eagle's maps of heritage resources and traditional uses for the Amaruq area was incomplete. The HTO requested that AEM prepare maps that bring together all of the information they have gathered, so HTO board members could help fill in gaps.
- 4) **Grave sites** – The Baker Lake HTO requested that a condition be placed on Agnico-Eagle's projects, requiring it to not conduct activity within 500m of a grave site. Agnico has agreed to a smaller buffer.
- 5) **Road dust** – The Baker Lake HTO has repeatedly requested dust be suppressed on the Meadowbank and Amaruq access roads. Agnico has repeatedly denied this request. Perhaps Agnico could, at minimum, suppress dust on the road near the most important hunting/fishing/camping areas (e.g. Whitehills lake)? The HTO board could help Agnico choose places that are most important to suppress road dust.





## **APPENDIX A.2**

**March 18, 2016 Notes**



## Meeting Minutes

### AEM COMMUNITY LIAISON COMMITTEE

March 18, 2016 1:30 – 4:00pm

Thelon Room INNS NORTH Hotel-Baker Lake

Interpreter-[REDACTED] Secretary-[REDACTED]

**Attendees –** Karen Yip (Chair)  
Luc Chouinard  
Dominic Richard  
Olivia Tagalik  
Louise Garon  
Robin Allard

AEM Community Liaison Coordinator  
AEM Assistant Mine Manager  
AEM HR Superintendent  
AEM HR Inuit Agent  
AEM HR Coordinator  
AEM Environmental Coordinator  
HAMLET of Baker Lake (guest)  
HAMLET Councilor/CLARC  
BL Community Health Representative-GN  
Community Health Development Coordinator-GN  
RCMP  
Qilautimiut-Elders  
BL HTO  
B.L.A.S.T.-Youth  
HAMLET CEDO  
BL District Education Authority  
Nunavut Arctic College

1. Opening Prayer-Mayor [REDACTED]

2. Introductions

3. Committee – Terms of Reference *Karen*

4. Amaruq Exploration Project *Luc*

Discussion Summary/Presentation Building Amaruq-AWR, study, Whale Tail dewatering.

Q. [REDACTED] Chemicals used when drilling? *Robin*-Only water



## 5. Environmental Update *Robin*

Discussion Summary/Presentation Wildlife monitoring, BL Harvest Study, winter sampling, water/air monitoring.

Q. [REDACTED] *Studies done to determine how dust affects the tundra? Robin*-Monitored for effects on animals, birds. AEM committed to applying suppressant at mine site and assessing where it else it may be effective, but there needs to be consideration of effects of calcium chloride on wildlife and environment.

Q. [REDACTED] *How far does the dust reach? [Feels that dust is settling on nearby lakes]*

Action Items Robin - Arrange trip to have [REDACTED] to identify areas in Whitehills Lake area where he claims dust is settling on the water (May/June)

Q. [REDACTED] *Top layer of gravel on road safe? Robin*-Yes, quarry samples taken

Q. [REDACTED] *Asbestos found in gravel on road? Robin*-Results pending/asbestos is natural dust

Q. [REDACTED] *Exhaust from heavy equipment safe? Robin*-Both dust & air monitoring done

Q. [REDACTED] *Was there a permit given/requested for Amaruq from the people who lived at that area? Luc*-Group of elders brought to area prior, not sure of names. If elders want to see Amaruq again it can be requested. Names will be checked before making a request.

Next Steps Karen - Checking with elders for names of people who were consulted regarding Amaruq area on initial 2 visits, and will advise Luc/Bertin of interest in a subsequent trip

Q. [REDACTED] *Which lake to be dyked, how is this done? Are there chemicals put into the water? Robin*-Fish transfer and dewatering described with specific explanation of waste rock vs. milled rock, and sampled water vs. water that is placed in tailing facility

## 6. Career Development Opportunities & Support Program *Louise/Olivia*

Discussion Summary/Presentation Louise-Career opportunities, recruitment process, career path, apprenticeships. Olivia-Support programs-Making it Work/FIFO, Homewood Human Solutions, Family Support program, AA.

Q. [REDACTED] *FIFO-Good info (couple communication, budgeting, support), can this program be offered in town? Olivia*-Looking at this for Phase 2

Luc suggests some info could be included during orientation week.

[REDACTED]

[REDACTED]

[REDACTED]



- [REDACTED]
7. **Community Relations** - Hamlet Council communication, Wellness Report & Implementation Plan, Community Investment Fund, Youth Mentorship Program, TASK Week, Festival By the Lake *Karen*

8. **Roundtable**

[REDACTED] (HTO) suggested that next meeting should have more information on the Environment-wildlife- including caribou migration routes and effects, dust/air monitoring. [Note-HTO meetings are held quarterly with Environment and could include these issues as well]

9. **Next Meeting – JULY at Meadowbank**

---

*tn/ky/21Mar16*



## **APPENDIX A.3**

**June 6, 2016 Notes**



## June Community Consultations for the Kivalliq Region (Before submission of the amendment of the FEIS)

**Presentation: June 6, 2016, 19:00 - 20:30 - 30 persons attended**

A horizontal bar chart showing the percentage of respondents who have been in a romantic relationship in the last 12 months, broken down by gender and age group. The y-axis lists age groups from 18-24 to 65+. The x-axis represents the percentage from 0% to 100%. For each age group, there are two bars: a blue bar for 'Male' and a red bar for 'Female'. The data shows that in the 18-24 age group, 85% of males and 80% of females have been in a relationship. This percentage generally increases with age, peaking in the 45-54 age group at 95% for males and 90% for females, before slightly declining in the 55-64 age group.

| Age Group | Male (%) | Female (%) |
|-----------|----------|------------|
| 18-24     | 85       | 80         |
| 25-34     | 80       | 75         |
| 35-44     | 85       | 80         |
| 45-54     | 95       | 90         |
| 55-64     | 90       | 85         |
| 65+       | 85       | 80         |

| Age Group | Gender | Percentage Vaccinated |
|-----------|--------|-----------------------|
| 18-24     | Male   | ~15%                  |
| 18-24     | Female | ~10%                  |
| 25-34     | Male   | ~25%                  |
| 25-34     | Female | ~20%                  |
| 35-44     | Male   | ~20%                  |
| 35-44     | Female | ~15%                  |
| 45-54     | Male   | ~35%                  |
| 45-54     | Female | ~30%                  |
| 55-64     | Male   | ~45%                  |
| 55-64     | Female | ~40%                  |
| 65-74     | Male   | ~55%                  |
| 65-74     | Female | ~50%                  |
| 75-84     | Male   | ~65%                  |
| 75-84     | Female | ~60%                  |
| 85+       | Male   | ~75%                  |
| 85+       | Female | ~70%                  |

Stephane Robert  
Pujjuut Kusugak  
Selma Eccles

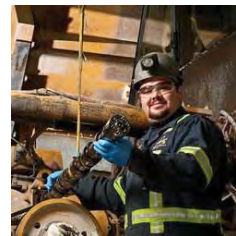
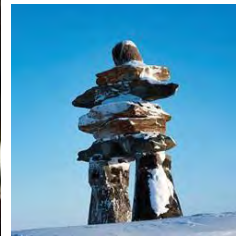
1. How long is the drive from Meadowbank to Amaruq?
2. How much is a hovercraft? How big are they?
3. Does Agnico use waste rock for construction?
4. What are plans for Nunavut employees with possibility of gap with Meadowbank closure and opening of Amaruq?
5. What will be done with waste water?
6. What do you do with collars that are caught from caribou that are collared for monitoring?



# EXPLORATION PROJECT AND AMARUQ WHALE TAIL PIT

**Stéphane Robert**

June 6, 2016



## AGENDA

- Exploration project
- 2016 Exploration Work Plan
- Amaruq Exploration and Road
- Amaruq Whale Tail Pit
- Hovercraft Pilot Project





AGNICO EAGLE



# EXPLORATION PROJECT

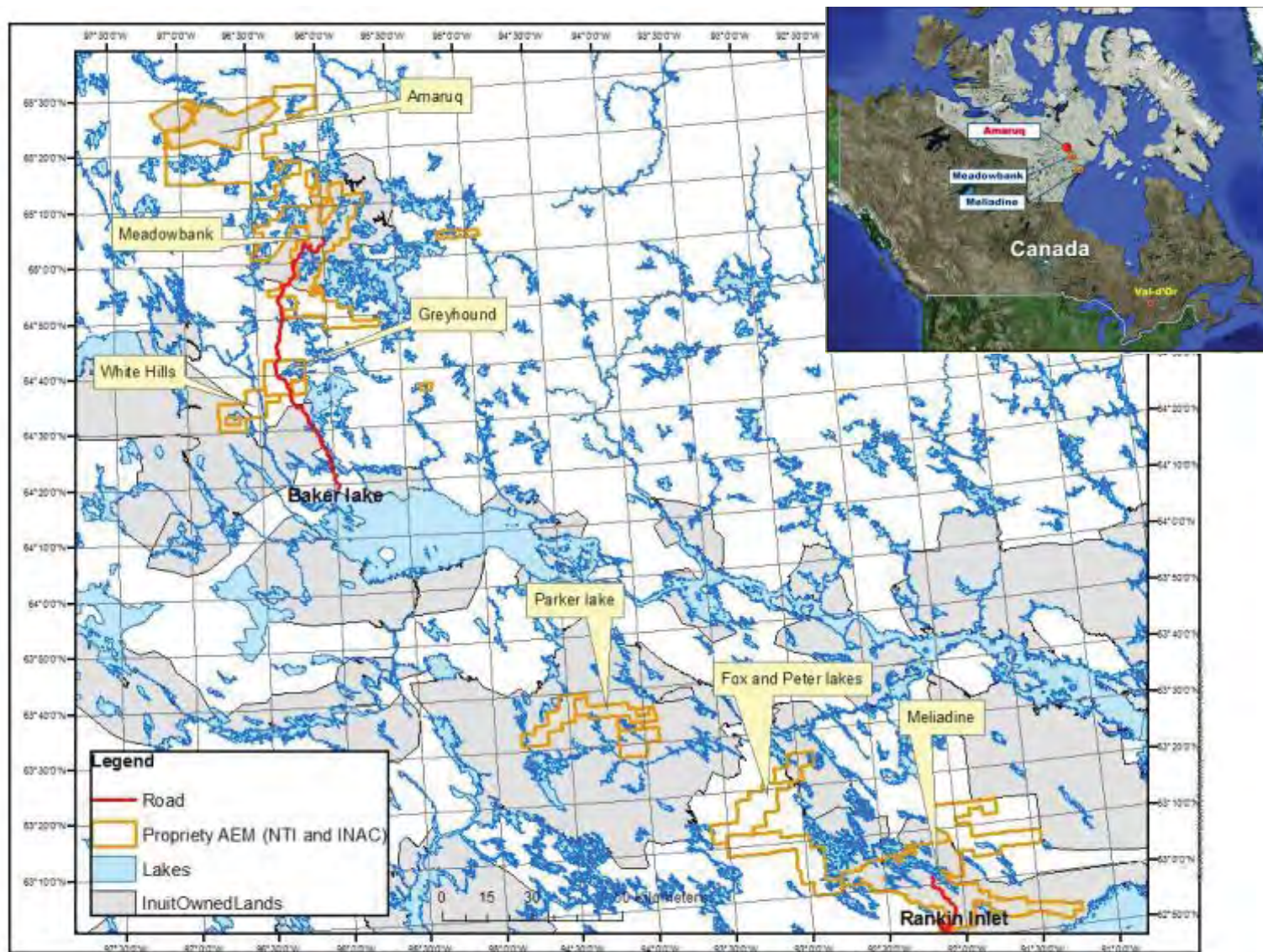




AGNICO EAGLE

# INTRODUCTION

## Agnico exploration areas



## INUIT HERITAGE

➤ To ensure Inuit heritage protection Agnico:

- Conducts annual archaeological works carried out by authorized archaeologists on various exploration sites and these works are permitted by the Government of Nunavut;
- Conducts office and field investigations carried out by archaeologists to find, identify and report archaeological sites;
- Submits annual reports to the Government of Nunavut.

➤ These investigations help Agnico reduce the risk of damaging an archeological site during exploration works.

➤ During a first stage exploration project, archaeological sites are protected by buffers that are established with the help of archaeologist and in compliance with the regulations.

## CARIBOU PROTECTION

### ➤ To limit the impact on the caribou:

- Agnico applies the protection measures described in the Keewatin Regional Land Use Plan (KRLUP). These measures include among others:

### ➤ **DIAND Caribou Protection Measures**

- 1 (a) The Permittee shall not, without approval, conduct any activity between May 15 and July 15 within the Caribou Protection Areas depicted on the map certified by the Engineer as the “Caribou Protection Map” and annexed to this Land Use Permit.
- 2. (a) In the event that caribou cows calve outside of the Caribou Protection Areas, the Permittee shall suspend operations within the area(s) occupied by cows and/or calves between May 15 and July 15.

### ➤ The Wildlife Protection and Response Plan developed by Agnico includes the KRLUP protection measures and describes the protocols to apply when caribous are approaching an exploration area.

- Caribou and muskox sighting reporting and protection protocol
- Work suspension protocol
- Activity Restart Protocol – Caribou Migration Alert

## SPILL CONTINGENCY PLAN

- A Spill Contingency Plan was developed by Agnico for the exploration projects; it designates lines of authority and responsibility, and establishes proper reporting and detailed action plans in the event of a spill. This plan is applicable to all Agnico employees and any contractors associated with the Agnico exploration projects
- Agnico has spill kits and various material and equipment to manage an eventual spill at each exploration site.





AGNICO EAGLE

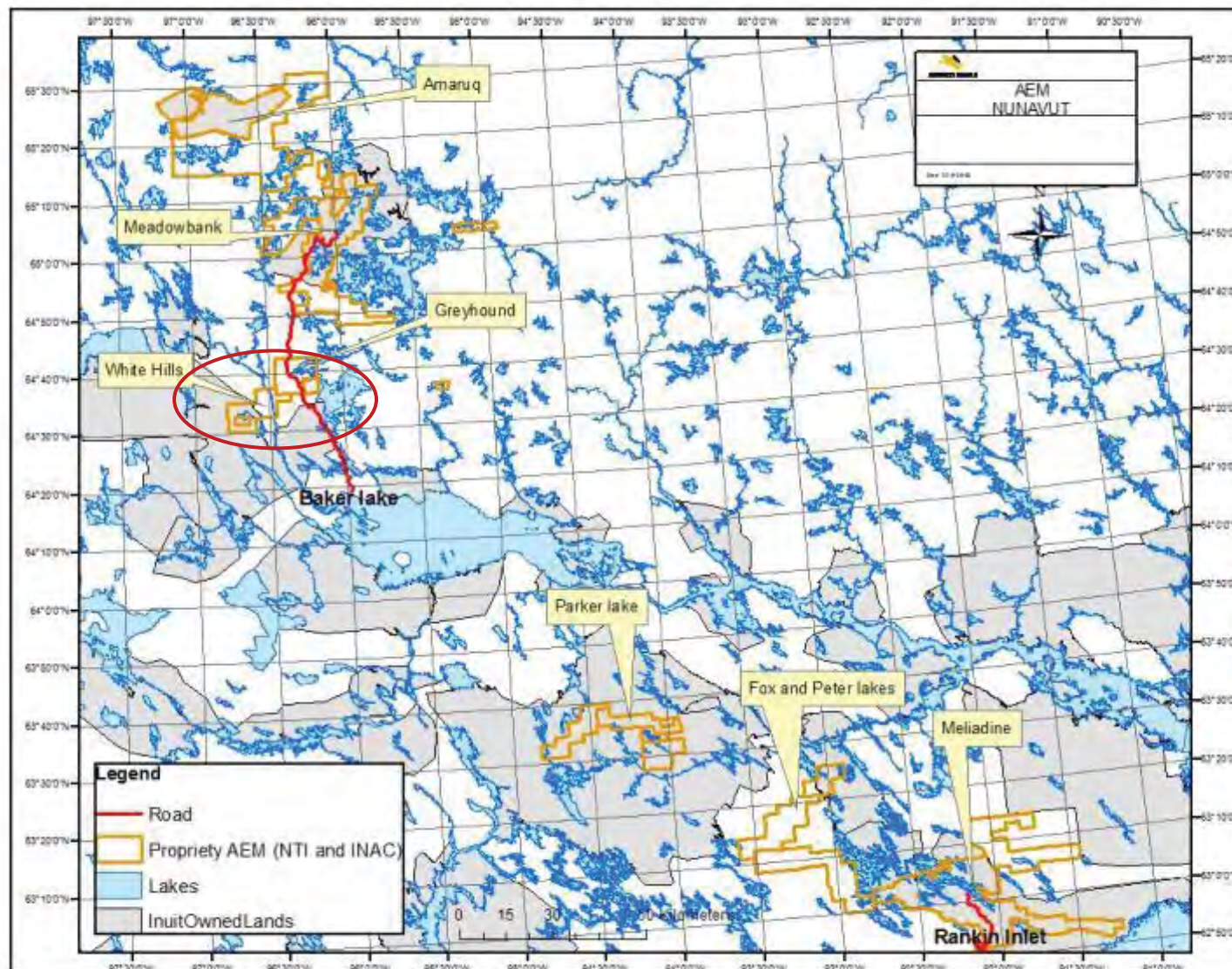


# 2016 EXPLORATION WORK PLAN





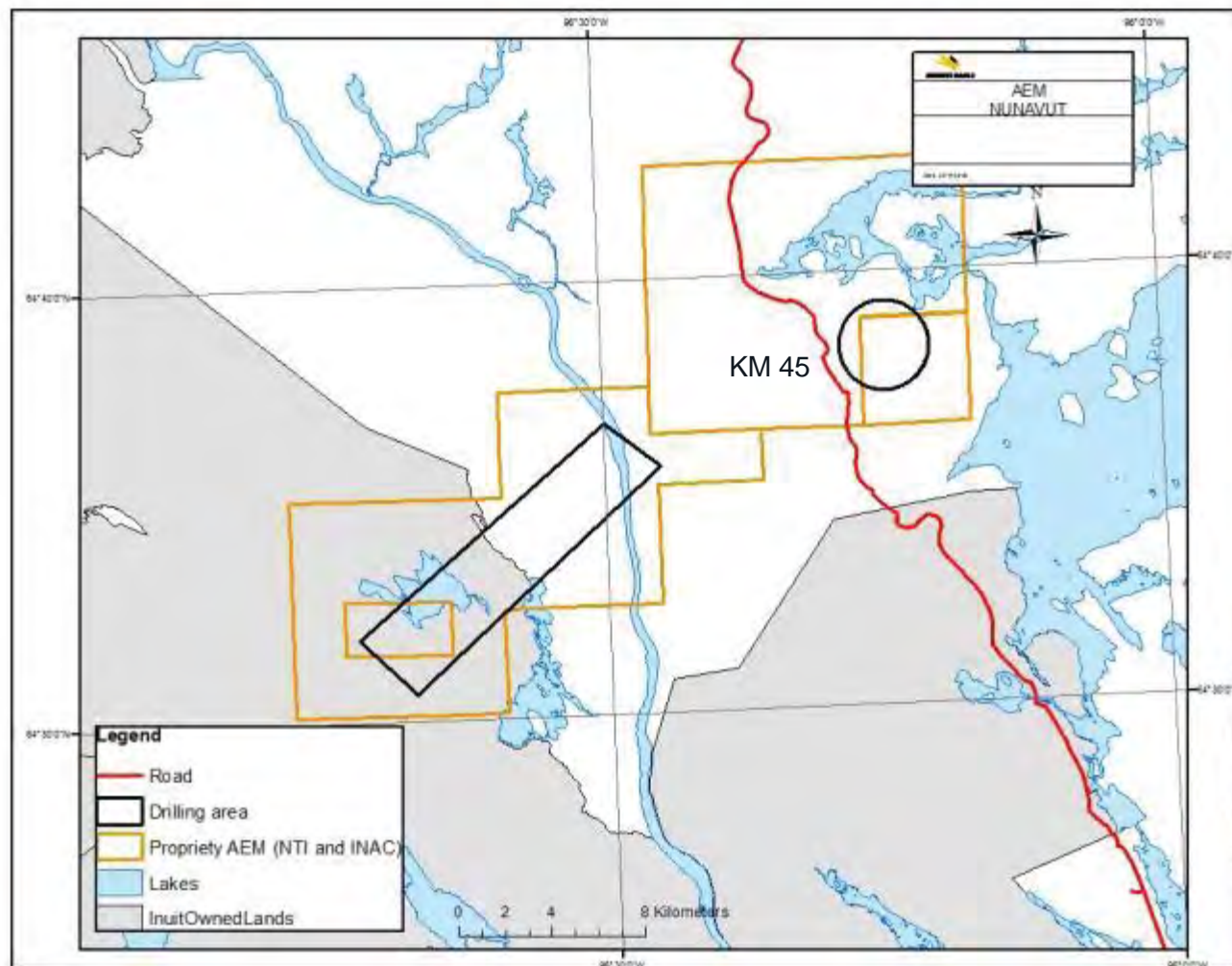
# WHITE HILLS AND GREYHOUND





## WHITE HILLS AND GREYHOUND

- 2000 meters are planned to be drilled in the White Hills and Greyhound project areas.
- Drilling is planned to be done during the summer, with heliportable drill.

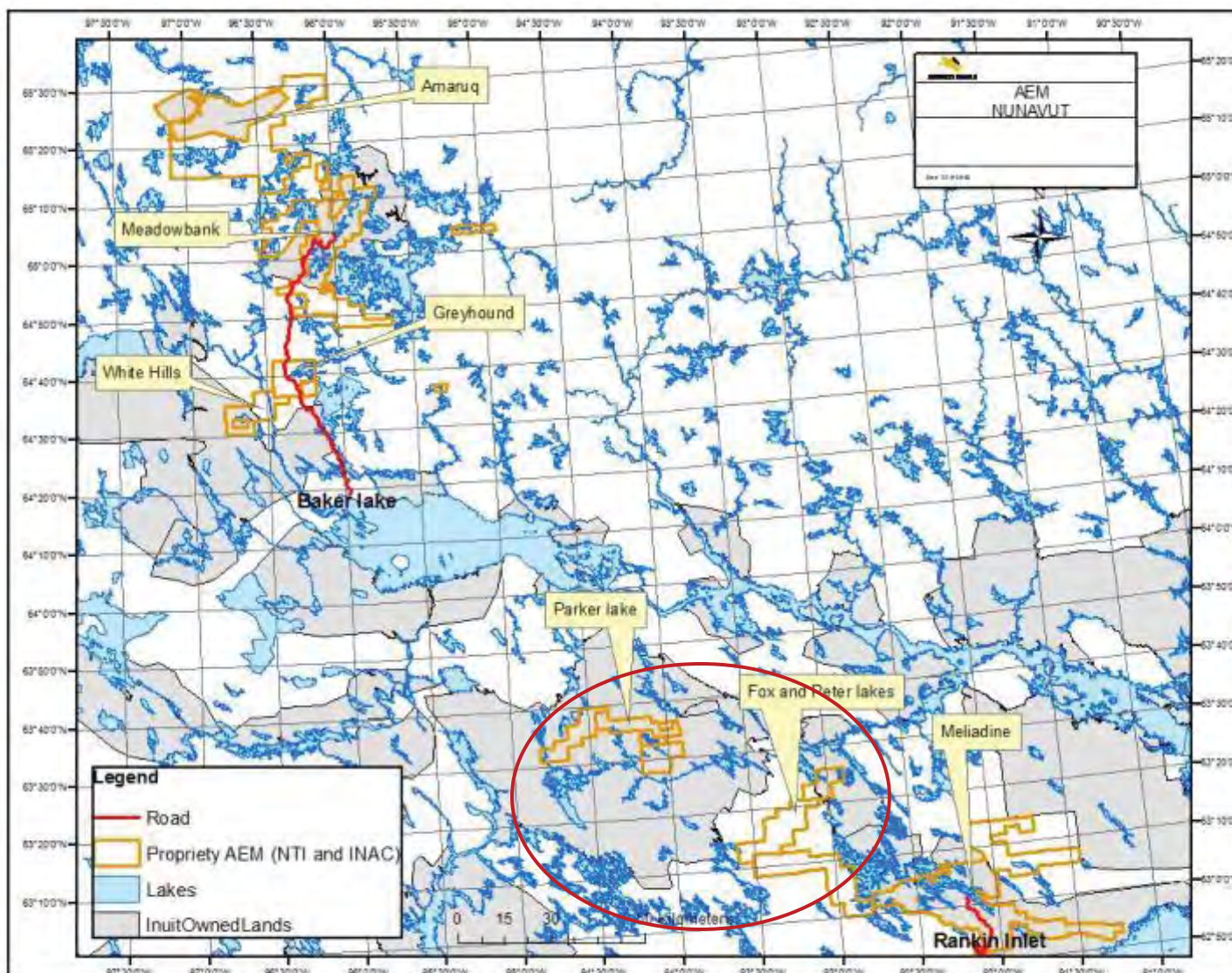






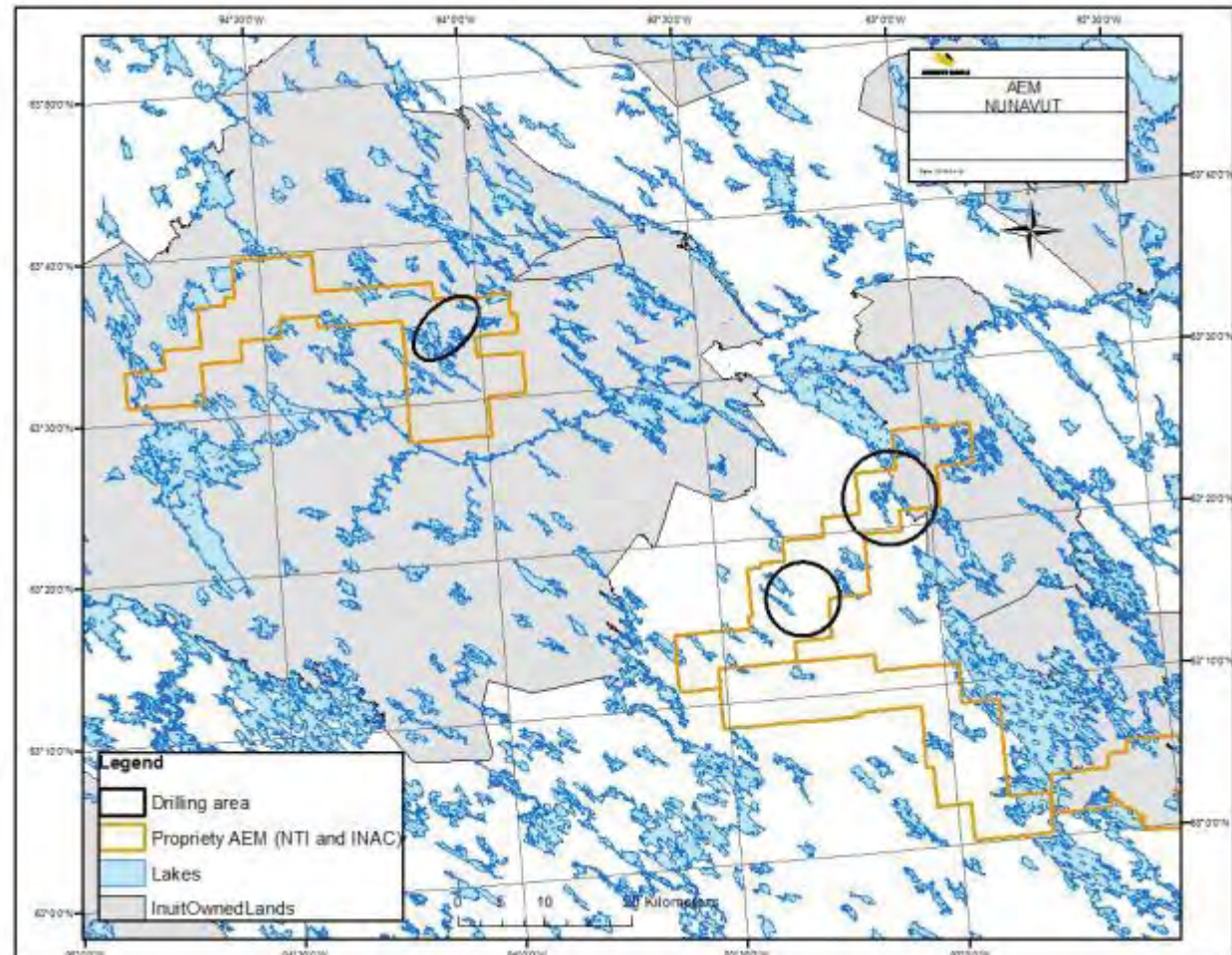
AGNICO EAGLE

## PARKER, FOX AND PETER LAKES



# FOX-PARKER LAKES

- 5600 meters are planned to be drilled in the Fox and Parker lakes project areas.
- Drilling is planned to be done during the spring and the summer, with heliportable drill







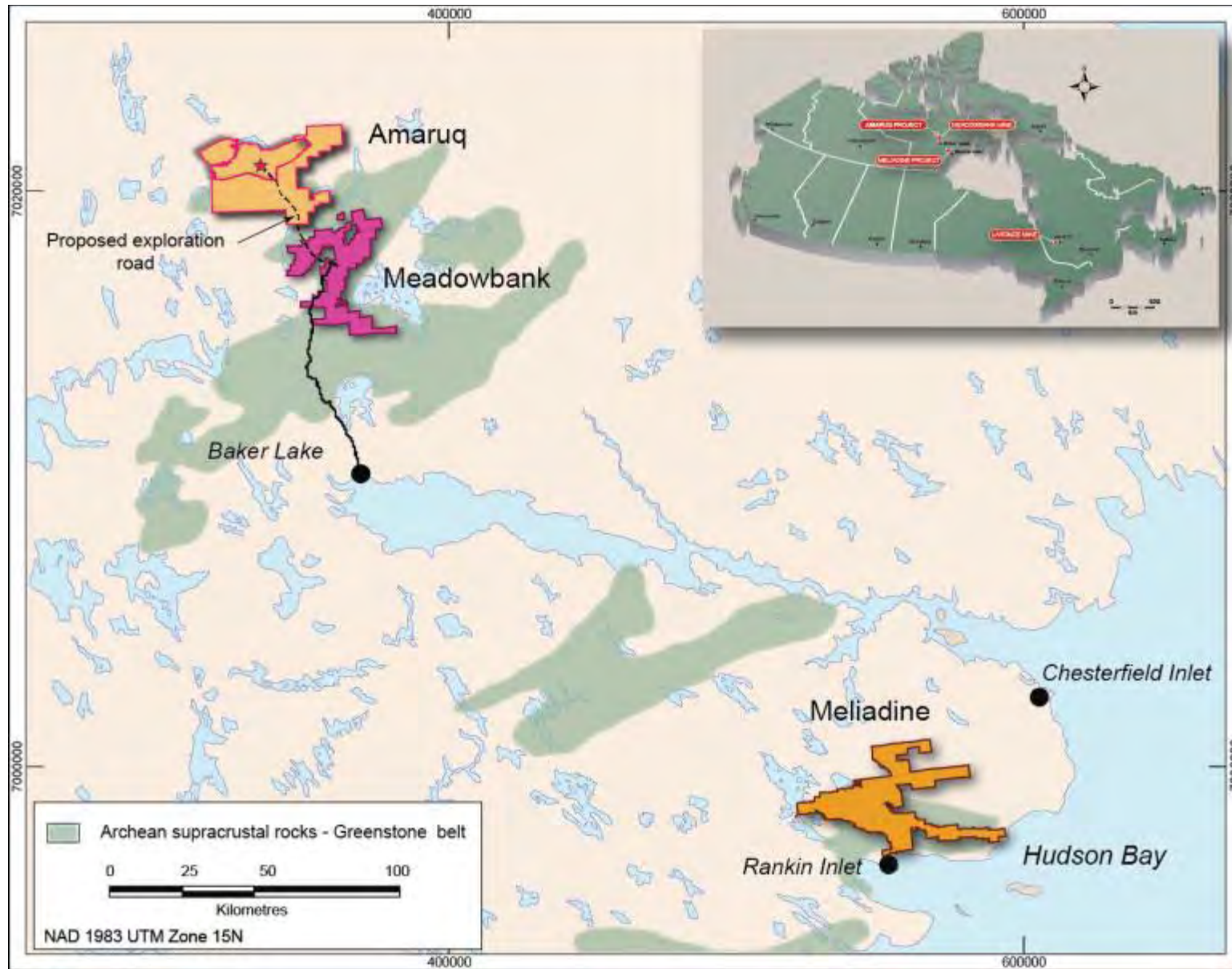
AGNICO EAGLE



# AMARUQ EXPLORATION ROAD



# AGNICO EAGLE IN NUNAVUT

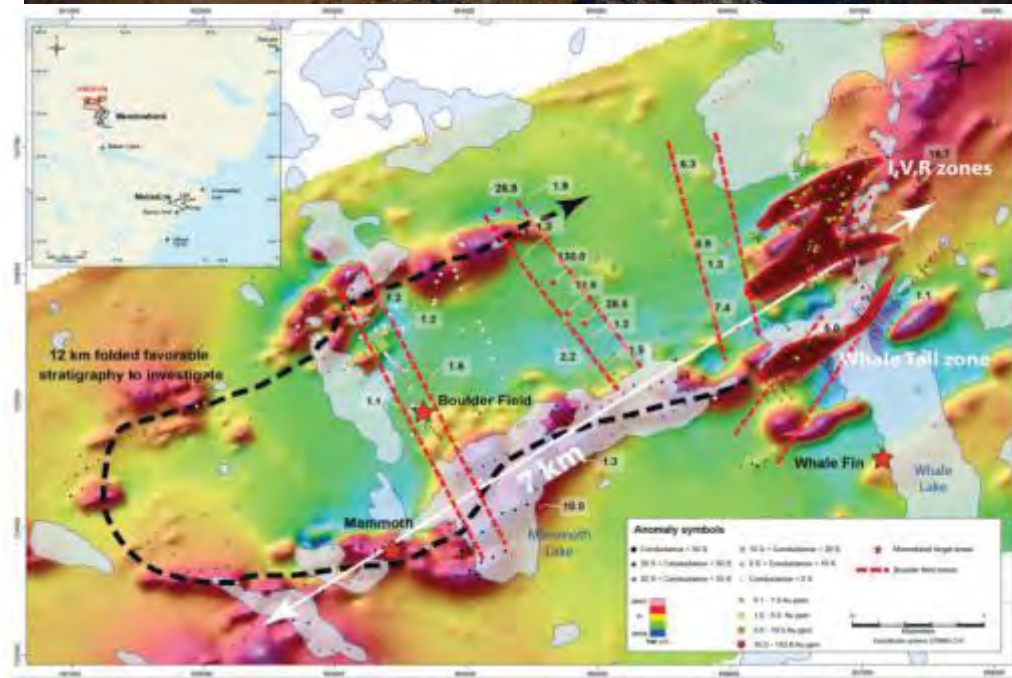




AGNICO EAGLE

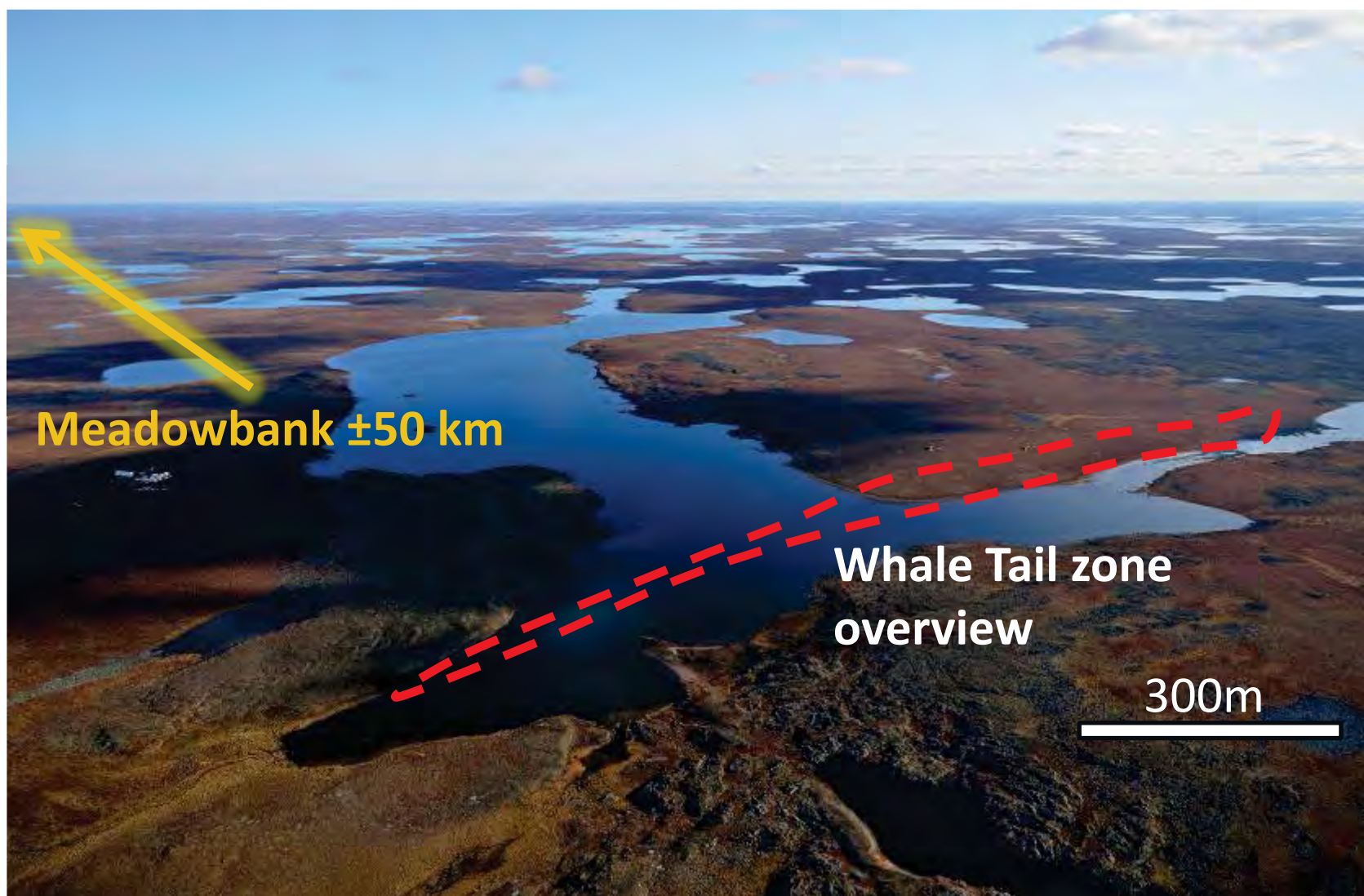
## AMARUQ EXPLORATION OVERVIEW

- **Early stage** exploration project
- Extensive **drilling program** in 2015 and beyond
- Can be successfully operated as a **satellite deposit** to supply ore to Meadowbank's process plant.
- **Meadowbank facilities**, including maintenance shops, process plant, camp and airstrip would all be used to process ore coming from the Amaruq project.
- **Permitting** requirements at Amaruq are not expected to be completed and approved until Q2-2018.





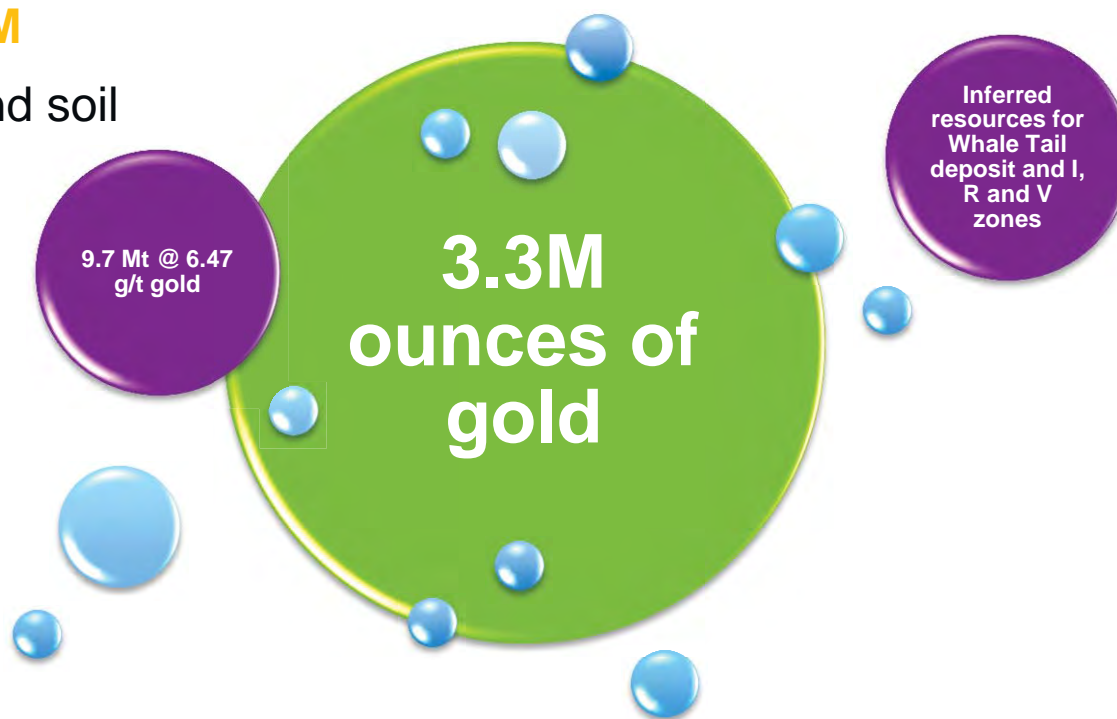
# WHALE TAIL



## NUNAVUT PLATFORM – AMARUQ 2015

### Key Facts for 2015:

- Camp accommodations: **135 people**
- Number of drills in 2015: **10**
- Total meters drilled in 2015: **+108K**
- Total budget in 2015: **+\$37M**
- Total number of drill core and soil samples: **+55.6K**



## AMARUQ AWAR

- The Amaruq all-weather exploration access road (AWAR) is being built at this time so the project can move to year-round exploration work instead of seasonal and we are in a position to begin operations
- The AWAR will allow Agnico Eagle to transport materials (ex: fuel, drilling supplies, food, etc.), as well as personnel to the Amaruq camp from Meadowbank, in a safe, secure and efficient manner
- We are only able to use a winter road for a few months of the year and we rely on helicopter transportation to the exploration camp in Amaruq.
  - This is a very costly and somewhat limiting process
- Development and operation an all-season access road that is 62.5km long and 6.5 meters wide and include:
  - Installation of 3 bridges
  - Installation of 8 large open bottomed arch culverts
  - Installation of 28 corrugated round culverts
  - Development of 6 spur roads to access 6 of the 7 eskers to be used for borrow pits
- The road will traverse approximately 40 km on Crown Land with the remaining 22.5 km on Inuit Owned Land





AGNICO EAGLE



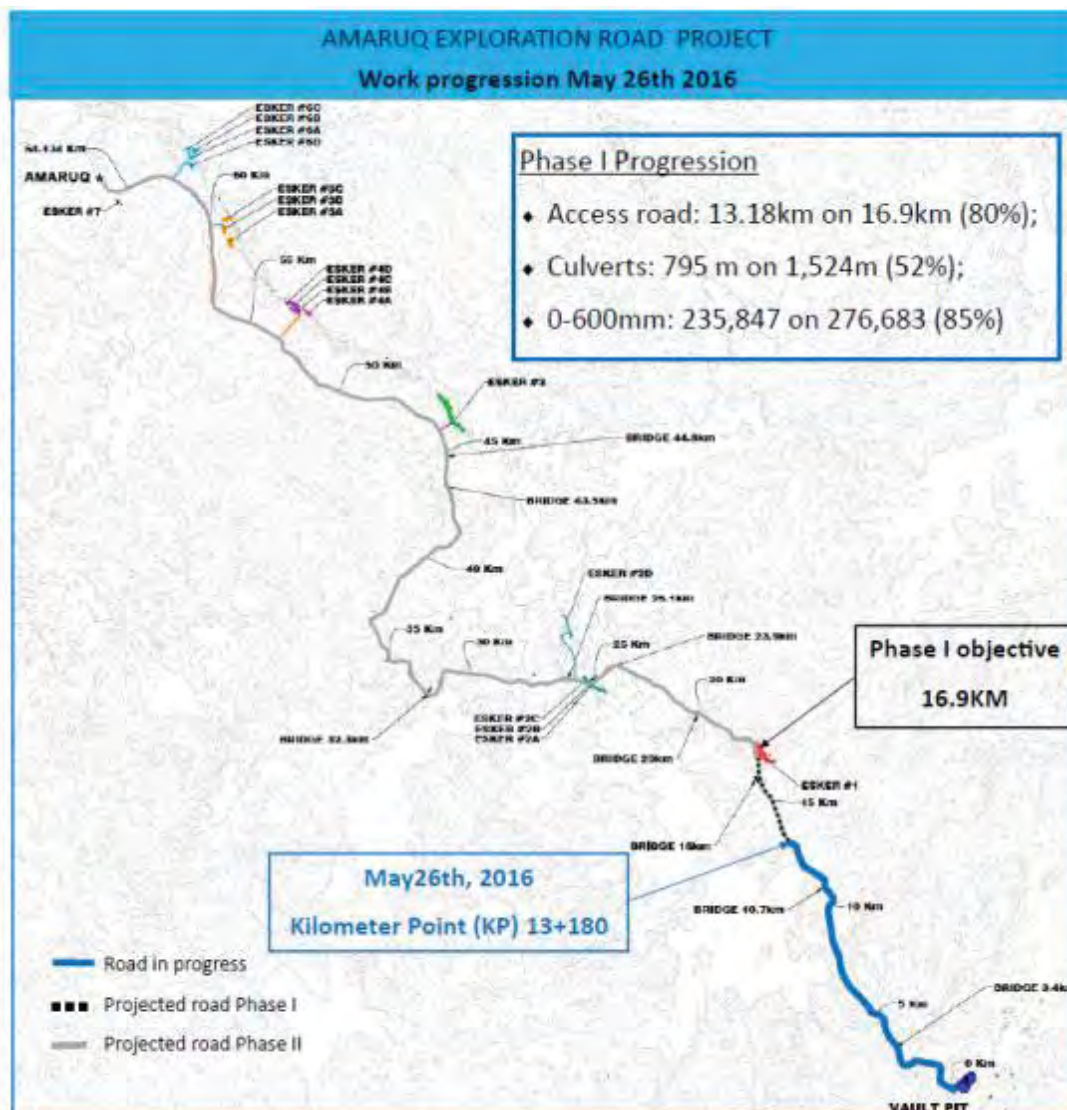
Road poor visibility



Snow removal after blizzard



Temporary bridge km 3.4



Ice bridge km 10.7



Road maintenance with loader



Protection berm along curve





AGNICO EAGLE

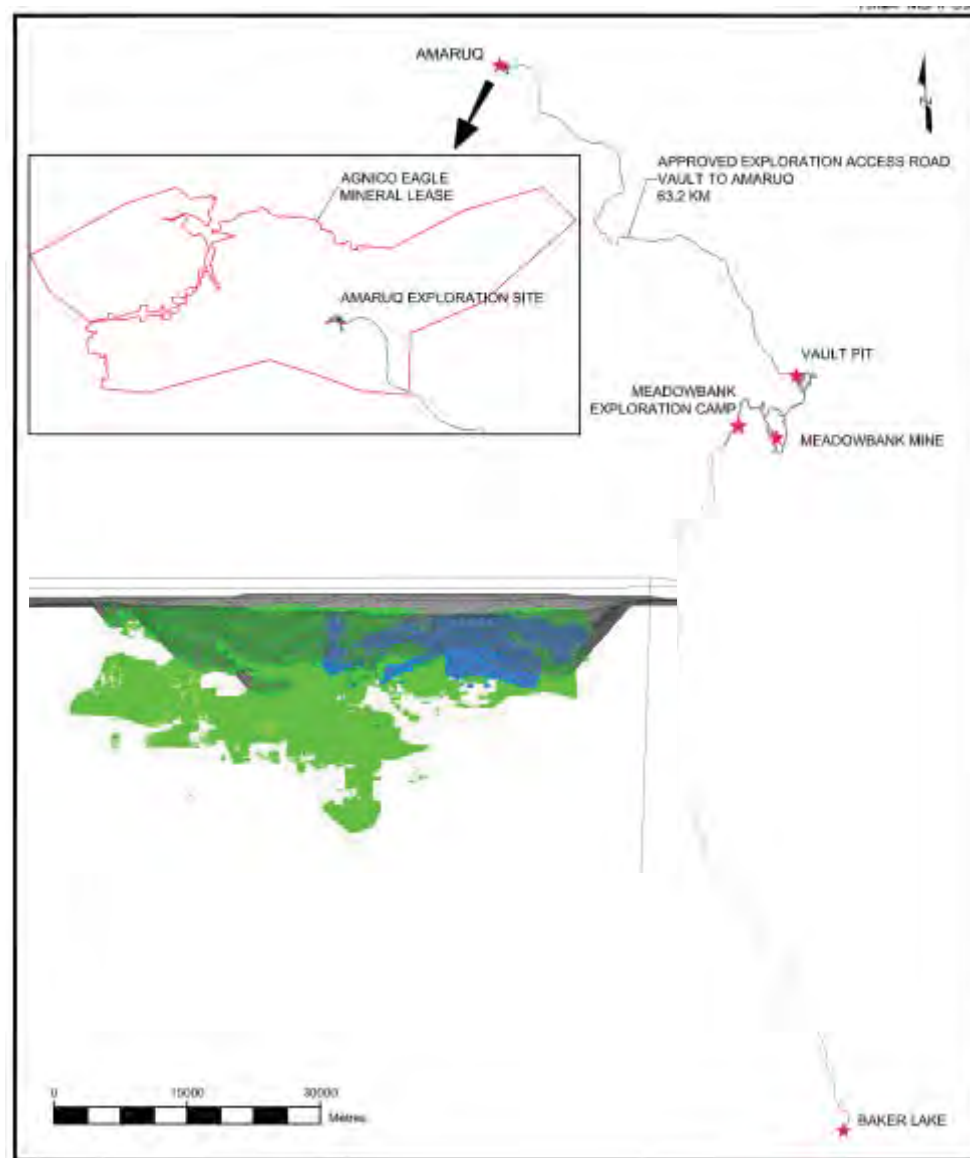


# AMARUQ -WHALE TAIL PIT

## MEADOWBANK MINE AND AMARUQ - WHALE TAIL PIT

### At Amaruq:

- Baseline studies and consultation began in August 2014 and continued in 2015
- Advanced exploration will continue
- Construct an access road by the end of 2017
- Conduct feasibility studies on Whale tail pit
- FEIS is underway with planned submission of an Amendment to the NIRB PC and NWB Type A by June 30<sup>th</sup>, 2016
- Minimizing the gap, our goal is to start construction as early as possible



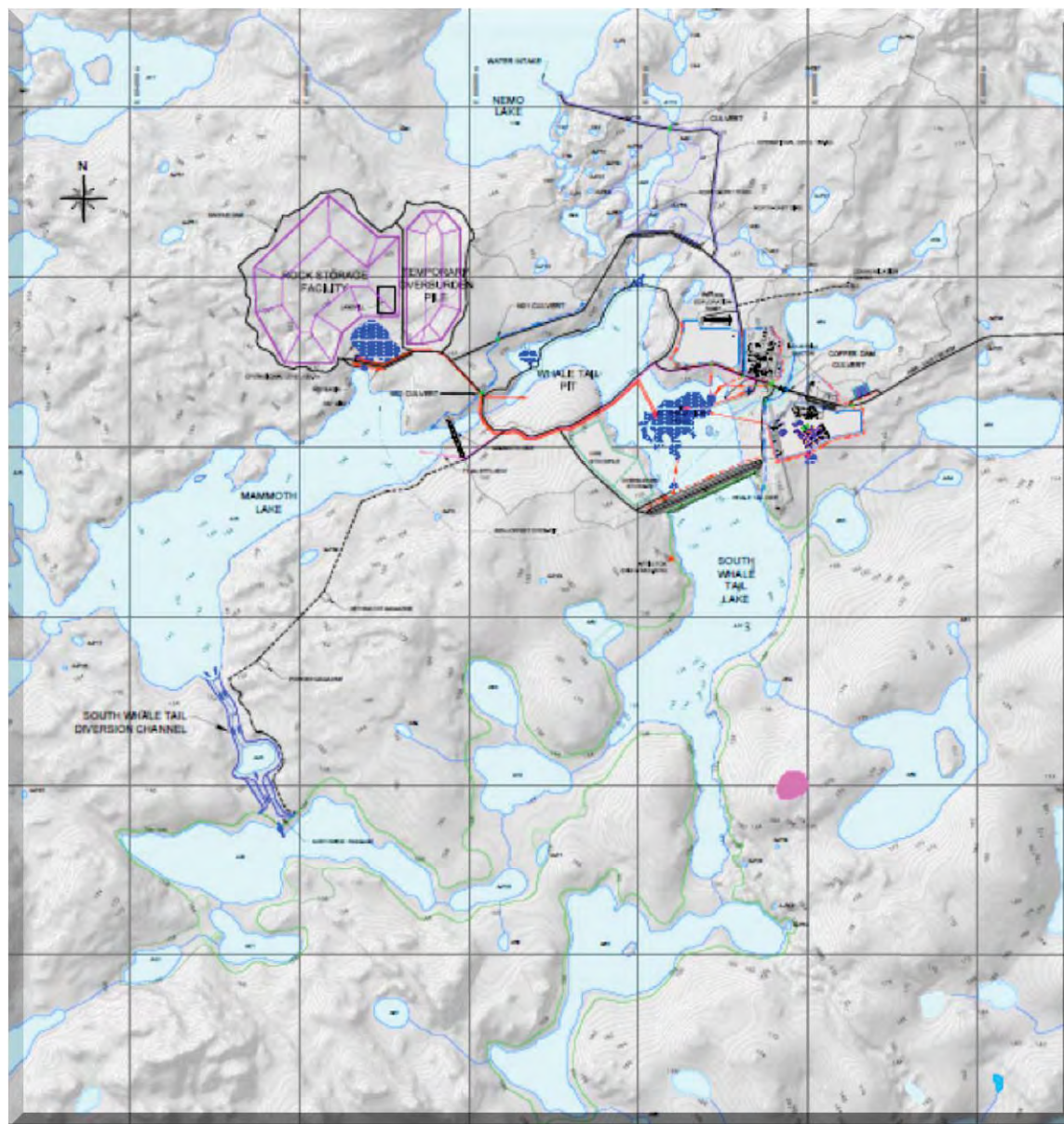




## AMARUQ - WHALE TAIL PIT BASELINE FIELD STUDIES

**Baseline Studies completed in 2014 and 2015:**

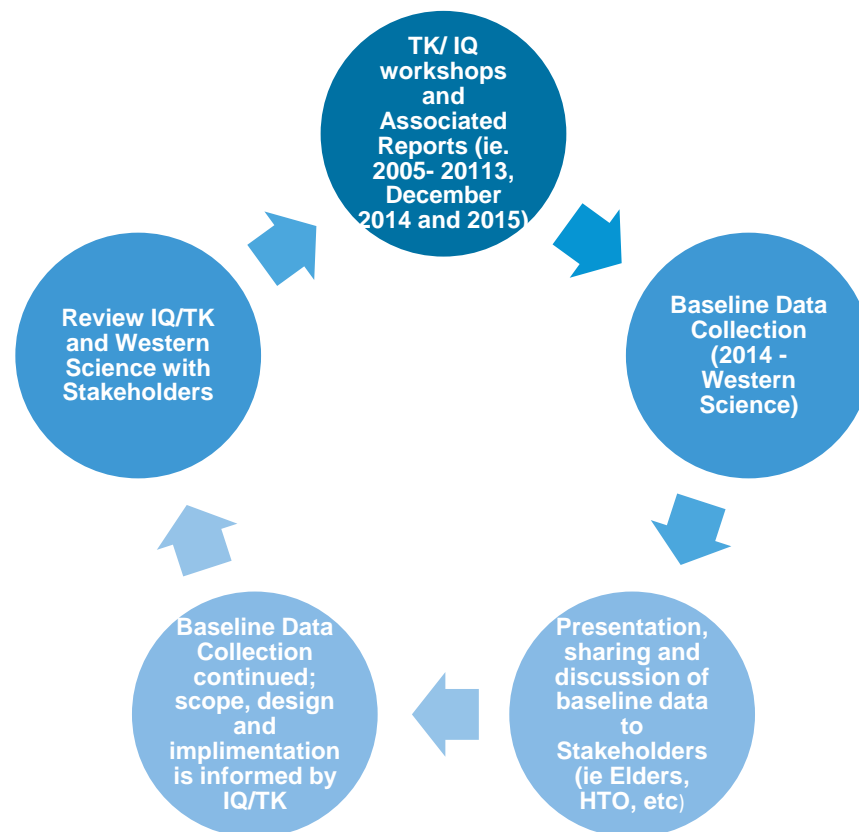
- Hydrology
- Surface water and Aquatics
- Fisheries
- Vegetation
- Wildlife
- Hydrogeology
- Geochemistry
- Archaeology (undisturbed grave site in pink; south of project)
- Traditional Land Use and Socio Economic
- Leveraging historical Meadowbank baseline data



## TRADITIONAL KNOWLEDGE AND INUIT QAUJIMAJATUQANGIT

### 2005 to 2016 TK and IQ Data:

- TK workshops held in December 2014
- 2015 baseline studies were guided by TK information
- Various site visits with HTO, CLARC, Elders in 2015
- February 2016, follow-up TK workshop with Elders, Women, Youth and meetings with HTO and CLARC
- Consultation with Regulators and Kivalliq Stakeholders throughout 2016

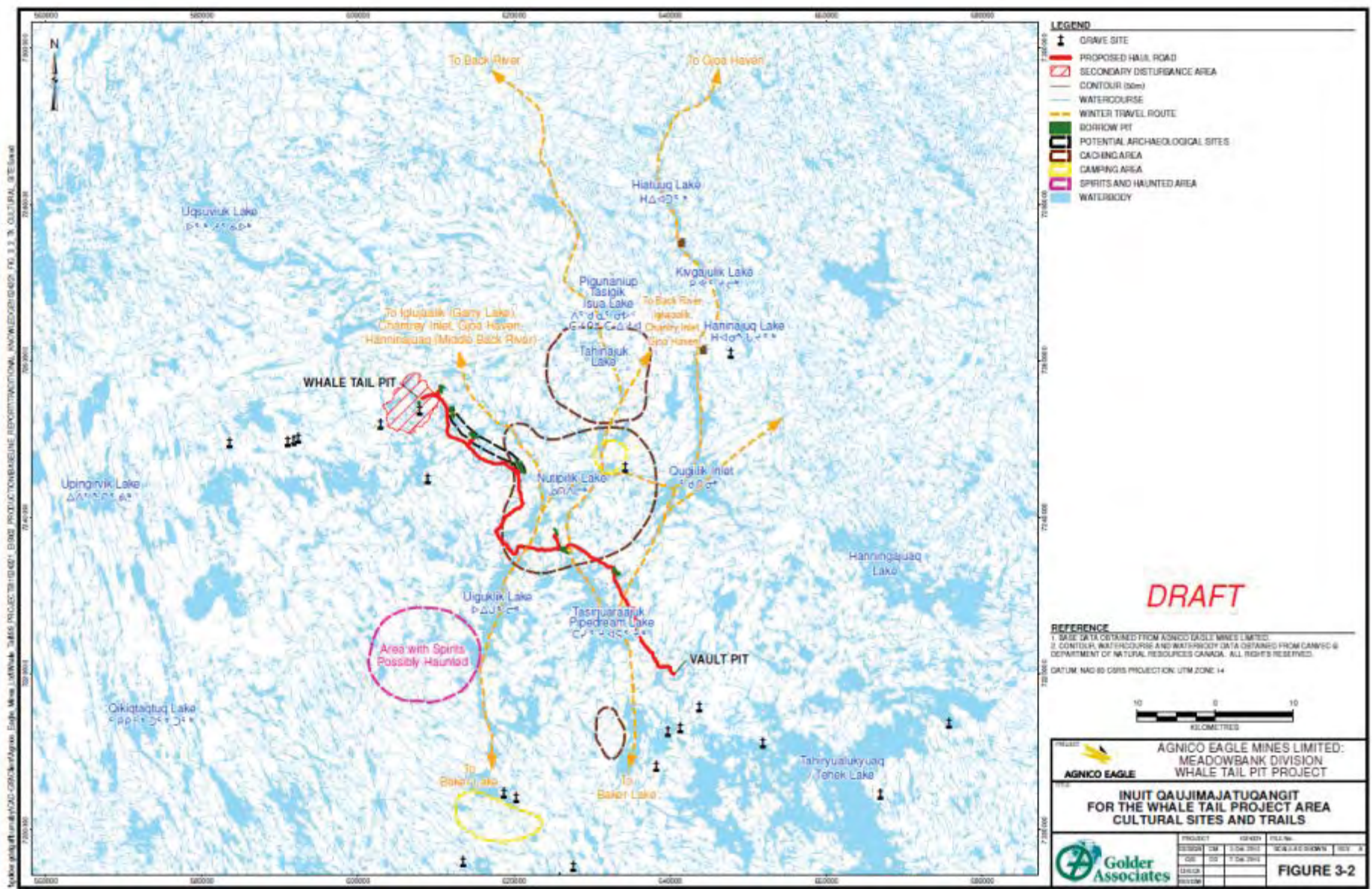






AGNICO EAGLE

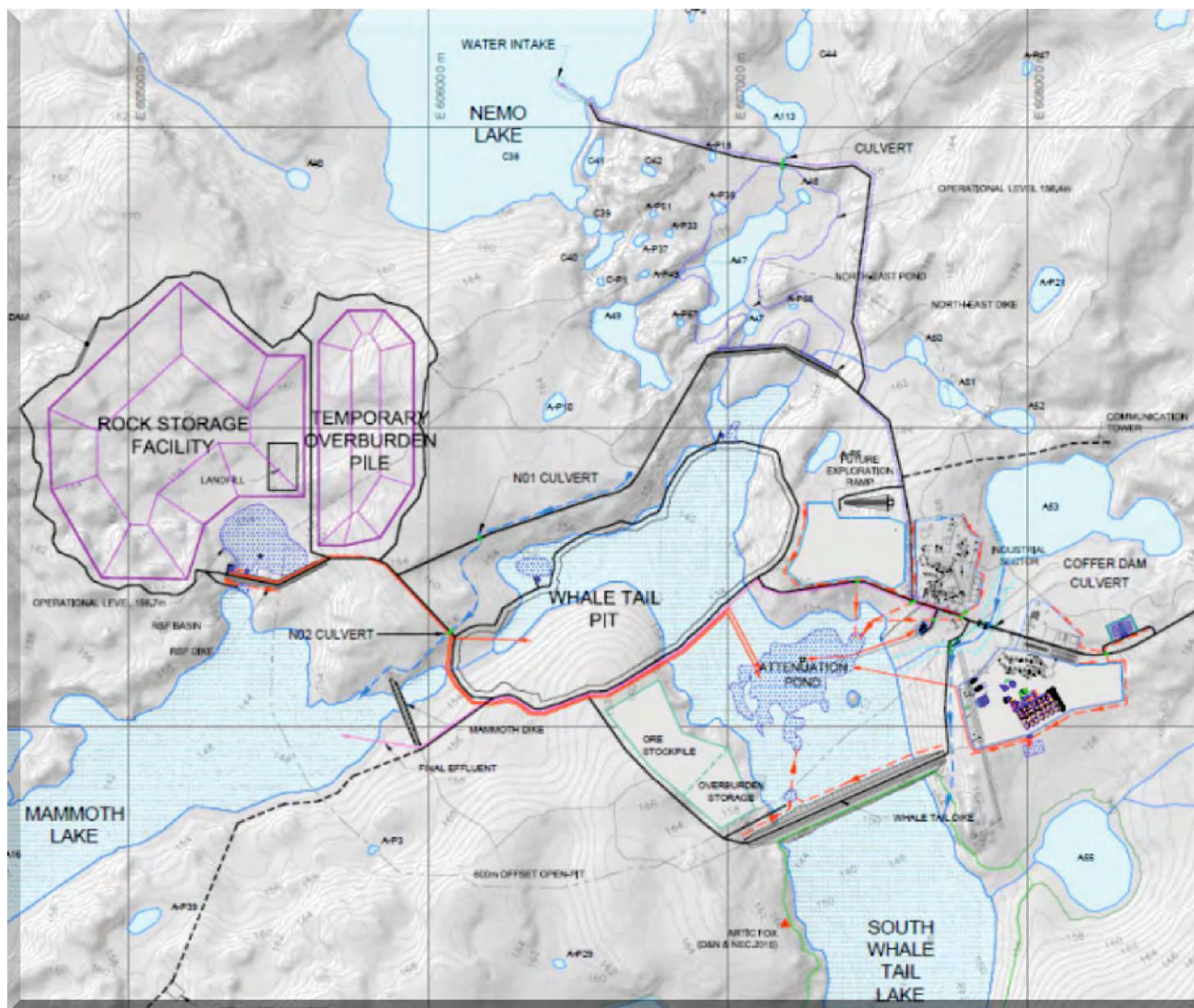
# TRADITIONAL KNOWLEDGE AND INUIT QAUJIMAJATUQANGIT







## WHALE TAIL PIT – SITE AND INFRASTRUCTURE

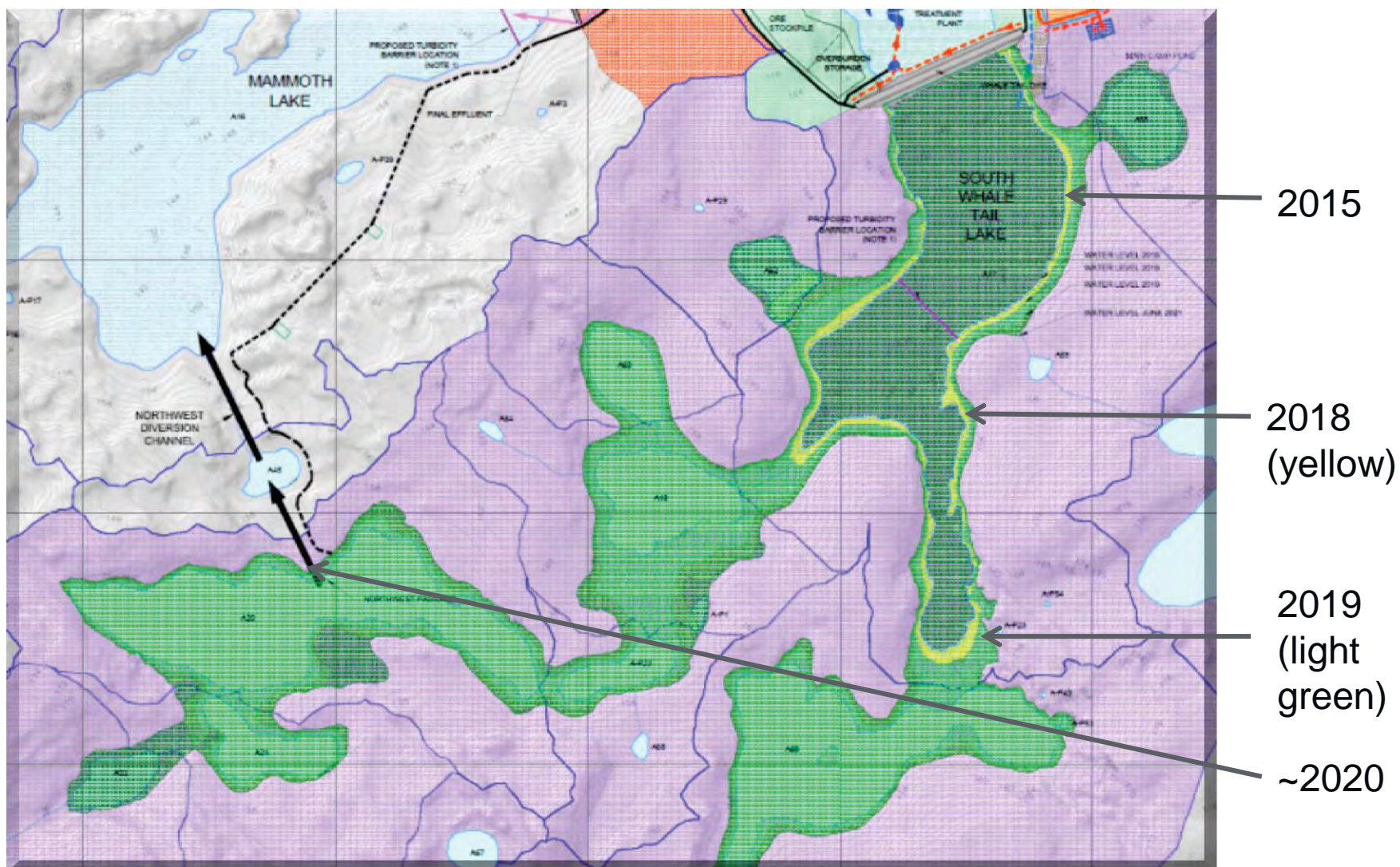






AGNICO EAGLE

## WHALE TAIL LAKE WATER DIVERSION





## MEADOWBANK INFRASTRUCTURE AND MILL WILL BE USED FOR WHALE TAIL PIT





## MEADOWBANK TAILINGS STORAGE FACILITY WILL BE USED FOR WHALE TAIL PIT



## AMARUQ – WHALE TAIL PIT PERMITTING

- Meadowbank will exhaust its reserves by Q3 2018
- Amaruq - Whale Tail Pit is a satellite deposit that will be a continuation of the Meadowbank Mine.
- Operations at Whale tail pit:
  - 2017: predevelopment construction
  - 2018: construction
  - 2019- 2022: operation (3-4 years),
  - 2022 - 2025 closure.
- Amendment to our NIRB Project Certificate No.4 (12.8.2 – reconsiderations of conditions) and Meadowbank Type A Water License
- Agnico Eagle is requesting these amendments to go through a coordinated process to expedite the permitting process and reduced the gap with Meadowbank.





AGNICO EAGLE



# HOVERCRAFT PILOT PROJECT

# HOVERCRAFT PILOT PROJECT



- Agnico Eagle is proposing to introduce 2 Air Cushion Vehicles or hovercrafts as a pilot project in the summer of 2017 for its Nunavut exploration activities.
- One hovercraft for transporting up to 25 workers from Meadowbank to the Amaruq exploration camp and from the exploration camp to active drill sites;
- Second hovercraft to transport equipment and supplies to drill sites from Amaruq camp;
- Each hovercraft weighs approximately 5.6 tonnes.





# MEADOWBANK HOVERCRAFT PILOT PROJECT

- The hovercraft pilot project will:
  - Demonstrate hovercrafts ability to function more efficiently and effectively than helicopters during winter and summer seasons without daylight limitations;
  - Provide enhanced safety support for workers 24 hours a day and more reliable search and rescue technology in the area around Meadowbank;
  - Demonstrate that hovercraft technology can operate with minimal environmental impact to the tundra or waterways;
  - Allow Agnico Eagle to service exploration activities in the area of the Meadowbank and Amaruq sites that are not road accessible.



## HOVERCRAFT HISTORY IN COLD CLIMATES AND/OR ARCTIC CONDITIONS

A hovercraft has a proven track-record as the most practical mode of transport when the route must be traveled over open water in summer and ice during the winter and a mixture of ice and water during freeze-up and break-up.

The history of hovercraft operation in cold climates and/or Arctic conditions, includes:

- Canadian Coast Guard (St. Lawrence River & Fraser River, British Columbia) 1974 to present
- East Aleutians Borough (Cold Bay, Alaska) 2007 to present
- Agip KCO (North Caspian Sea) 2003 to present
- Alaska Hovercraft Ventures (Lynden Inc.) 1993 to present
- British Petroleum (Prudhoe Bay, Alaska) 2003 to present
- Cominco Metals (Snip Mine, Northern BC) 1991 to 1994
- Northern Transportation Company (Mackenzie Delta) 1974-77



# MEADOWBANK HOVERCRAFT PILOT PROJECT

## Ground Pressure

- Hovercraft create minimal environmental impacts to the surface over which they pass. The vehicle is riding over the ground lifted off by a curtain of forced air.
- The manufacturer reports a ground pressure of only 1 psi.
- The ground pressure of motorized vehicles is often compared to the ground pressure of a human foot, which can be 60 - 80 kPa (8.6 – 11.4 psi) while walking.
- Ground pressure of 14 kPa (2 psi) or less is recommended for fragile ecosystems like tundra/marshes. Decreasing the ground pressure increases the flotation, allowing easier passage of the body over soft terrain. This is often observed in activities like snowshoeing.



|                     |          |
|---------------------|----------|
| Human on snowshoes: | 0.5 psi  |
| Rubber-tracked ATV: | 0.75 psi |
| Wheeled ATV:        | 2 psi    |
| Drilling rig:       | 3.8 psi  |
| Human male:         | 8 psi    |
| M1 Abrams tank:     | 15 psi   |
| Toyota 4Runner      | 25 psi   |



# MEADOWBANK HOVERCRAFT PILOT PROJECT

## Potential Noise Levels

The Arktika 3T Hovercraft generates noise levels of 70 dB immediately adjacent to the running vehicle.

Inside the cabin the measured noise levels are 60 db.

A noise level of 50 db is considered to be a level where a voice needs to be raised to carry on a conversation.

| Common Sound  | Intensity in Decibels |
|---|-----------------------|
| Firecracker   | 180dB                 |
| Gunshot (Rifle, Pistol), Jet Plane Taking Off                     | 140+dB                |
| Jackhammer, Heavy Industry Equipment                              | 130dB                 |
| Rock Concert, Power Tools, Snowmobile, Sandblasting, Video Arcade | 110 – 120dB           |
| Chainsaw, Pneumatic Drill   | 100dB                 |
| Lawn Mower, Shop Tools, Truck Traffic                             | 90dB                  |
| Vacuum Cleaner  | 70dB                  |
| Average Office Noise, Sewing Machine                              | 60dB                  |
| Normal Conversational Speech                                      | 50dB                  |
| Refrigerator  | 40dB                  |
| Whisper   | 30dB                  |
| Rustling Leaves   | 20dB                  |
| Average Threshold of Normal Hearing                               | 0 – 25dB              |

# MEADOWBANK HOVERCRAFT PILOT PROJECT



## How will Agnico Eagle avoid direct impact on Caribou?

- The key impact with caribou will be the noise created by the traveling hovercraft.
  
- Agnico Eagle will take the following actions to minimize noise disturbance to caribou:
  - Agnico Eagle already has in place an adaptive management plan to govern how it monitors for the presence of caribou at both its Meadowbank and Amaruq sites. This plan outlines actions to be taken to minimize disturbance of caribou as they pass through the area.
  
  - Agnico Eagle will use this plan to govern the operation of its hovercraft units to avoid adverse interaction with caribou passing near planned travel routes and work sites.
  
  - Agnico Eagle **will not** use its hovercrafts inside the identified core calving and post-calving grounds during the seasonal time periods when caribou are calving and nursing;
  
  - Agnico Eagle will avoid close contact between its hovercraft and any groups of caribou. Operators will be trained to identify groups of caribou along proposed routes and to change direction to go around and/or avoid coming close to any observed groups of caribou.

## QUESTIONS AND DISCUSSION?



**AGNICO EAGLE**



## **APPENDIX A.4**

**June 7, 2016 Notes**



## Baker Lake Community Meeting Exploration and Whale Tail

**Presentation: June 7, 2016, 19:00 - 21:00**

**Attendees:**

The image contains three horizontal bar charts, each with 20 rows of data. The bars are black and set against a white background. The first chart on the left has a y-axis with 20 labels, the middle chart has a y-axis with 20 labels, and the third chart on the right has a y-axis with 20 labels. Each chart shows the percentage of respondents for each reason, with the bars extending to the right. The data is as follows:

| Reason | Percentage (%) |
|--------|----------------|
| 1      | 10             |
| 2      | 15             |
| 3      | 18             |
| 4      | 16             |
| 5      | 14             |
| 6      | 12             |
| 7      | 11             |
| 8      | 13             |
| 9      | 15             |
| 10     | 14             |
| 11     | 16             |
| 12     | 15             |
| 13     | 13             |
| 14     | 17             |
| 15     | 16             |
| 16     | 14             |
| 17     | 12             |
| 18     | 11             |
| 19     | 13             |
| 20     | 15             |

| Reason | Percentage (%) |
|--------|----------------|
| 1      | 10             |
| 2      | 15             |
| 3      | 18             |
| 4      | 16             |
| 5      | 14             |
| 6      | 12             |
| 7      | 11             |
| 8      | 13             |
| 9      | 15             |
| 10     | 14             |
| 11     | 16             |
| 12     | 15             |
| 13     | 13             |
| 14     | 17             |
| 15     | 16             |
| 16     | 14             |
| 17     | 12             |
| 18     | 11             |
| 19     | 13             |
| 20     | 15             |

| Reason | Percentage (%) |
|--------|----------------|
| 1      | 10             |
| 2      | 15             |
| 3      | 18             |
| 4      | 16             |
| 5      | 14             |
| 6      | 12             |
| 7      | 11             |
| 8      | 13             |
| 9      | 15             |
| 10     | 14             |
| 11     | 16             |
| 12     | 15             |
| 13     | 13             |
| 14     | 17             |
| 15     | 16             |
| 16     | 14             |
| 17     | 12             |
| 18     | 11             |
| 19     | 13             |
| 20     | 15             |



[REDACTED]  
[REDACTED]  
[REDACTED]  
[REDACTED]  
[REDACTED]

[REDACTED]  
[REDACTED]  
[REDACTED]  
[REDACTED]  
[REDACTED]

[REDACTED]  
[REDACTED]  
[REDACTED]  
[REDACTED]

### Questions and Comments.

[REDACTED] Asked if there will be an elder when Agnico Eagle is checking for archeological sites. She also asked if Agnico pays for surface and underground minerals.

[REDACTED] What months will the drilling be for Parker Lake? Added caribou were passing and it took 3 days for the road to be closed. How come there is only truck monitoring the road it should be 2 trucks on the road.

[REDACTED] What's to know what happens when the permits are refused for Applications from NIRB.

Is there low and high grade gold?

[REDACTED]: The trail at Amaruq is right where people use it. My other question is how come the bridges cannot be wider for heavy and wide trucks?

[REDACTED]: Amaruq Project is that the real name?

[REDACTED] When are the ski-doo crossings going to be fixed by Meadowbank? We were promised that last year the ski-doo crossings were going to be done.

[REDACTED] Were people consulted in the Kitikmeot, like Cambridge Bay, Gjoa Haven for exploration in Amaruq? Hunting is done in that area by people in Kitikmeot too.

[REDACTED] Are there going to be more jobs for residents of Baker Lake because of the new exploration sites?

Can people with special needs be allowed to work at the mines?

[REDACTED]: Fished have to be protected in lakes & Rivers. How do you plan to protect them?

[REDACTED] When you are draining lakes are you just to remove the fish? Is Agnico Eagle going to check the health of the fish? Are you guys going to check the health of the fish before you put them back?

[REDACTED] Can you bring people to the camps they use to live in? Will you check the graves and indicate where they are located?

[REDACTED] Where the graves are located, I am concerned they will not get noticed and get piled with gravel.

[REDACTED] Do you have a map of crown land, Inuk land ?

[REDACTED] Is AEM thinking of giving back to the elders the land they have taken. Maybe the mining company can donate a new truck for the elders facility.

[REDACTED] People in Baker Lake who need help do not see the money at all. People are going hungry, cheques from NTI are very small, I would like to see some of the money going to the residents of Baker Lake.

[REDACTED] Will you go on local radio to inform and ask people about the use of the hover craft?





██████████ When is NIRB coming to Baker Lake?

██████████ I want to understand if 90 million a year goes to NTI?

██████████ What the speed of the hover craft?

██████████ How many people will work at Amaruq?

██████████ Getting a Doctors note is almost impossible especially when they don't come often. Can this be dealt with?

██████████ Can AEM get an ambulance for the Hamlet of Baker Lake?

██████████: Is the mine willing to train Inuit graduates for water samples, and other jobs like that?



## **APPENDIX A.5**

**September 1, 2016 Notes**



## BAKER LAKE CLC MEETING

### Baker Lake CLC Meeting

September 1, 2016 Baker Lake

#### Attendees:

| Name              |     | Function                            | Organization           |
|-------------------|-----|-------------------------------------|------------------------|
| Karen Yip         | KY  | Community Liaison Coordinator-Chair | Agnico Eagle Mines     |
| Robin Allard      | RA  | Environment Coordinator             | Agnico Eagle Mines     |
| Louise Garon      | LG  | Human Resources Coordinator         | Agnico Eagle Mines     |
| Maxime St-laurent | MSL | Human Resources Counselor           | Agnico Eagle Mines     |
| Thomas Anirnic    | TA  | Hamlet Representative               | Hamlet of Baker Lake   |
| Jamie Seeteenak   | JS  | Hunters/Trappers Representative     | BLHTO                  |
| Eva Noah          | EN  | Education Representative            | Nunavut Arctic College |
| Philippa Iksirac  | PI  | Elder Representative                | Qilautimiut            |
| Kevin Stoddart    | KS  | Youth Representative                | BLAST                  |
| Basil Quinangnat  | BQ  | Education Representative            | DEA                    |
| Joan Killulark    | JK  | Community Health Rep                | GN                     |
| Alexander Alooc   | AA  | Translator                          |                        |

| Agenda Item                       | Description  | Action Items/Due Date  |
|-----------------------------------|--|--|
| Opening Prayer                    | <ul style="list-style-type: none"> <li>Thomas Anirnic</li> </ul>   |  |
| Introductions                     |  |  |
| Phaser Lake Fish Out Presentation | <ul style="list-style-type: none"> <li>PowerPoint presentation (RA)</li> <li>Transferred fish-62% success rate (increasing)</li> <li>CLC concerns: <ul style="list-style-type: none"> <li>How many fish? Level of Wally Lake monitored?</li> <li>Transferred fish that are eaten, considered successfully transferred? Nets left overnight?</li> <li>Lures used in phase 2? Stress levels affected by dewatering, longer time in recovery area advantageous.</li> <li>Plastic fish tags harmful? Wally Lake connected to other lakes? Are eggs transferred?</li> </ul> </li> </ul> | <ul style="list-style-type: none"> <li>Fish out results to be presented after project completion.</li> </ul> |

| Agenda Item   | Description   | Action Items/Due Date  |
|---|---|--|
| Maternity<br>Parental<br>Adoption Leave<br>Guide/ Labour<br>Pool/<br>Country Food<br>Activities | <ul style="list-style-type: none"> <li>Parental Guide presentation-discussion of 5 Pillars</li> <li>LG/MSL</li> <li>CLC concerns: <ul style="list-style-type: none"> <li>Why are EI forms not provided by Agnico?</li> <li>When employee applies for EI early in pregnancy, EI benefits may be used up before maternity/parental leave is complete</li> </ul> </li> <li>Labour Pool -Work Readiness-KMTS/MBK Site Readiness program</li> <li>Country Food Night and Square Dance to be held in October- 2 days 4x/year-can accommodate approx. 100 people. Looking for traditional cooks</li> </ul>   | <ul style="list-style-type: none"> <li>Country Food night information to be shared (KY)</li> </ul>   |
| Community Relations   | <ul style="list-style-type: none"> <li>Baker Lake Community Report distributed-some highlights discussed (KY)</li> <li>BL Wellness Report/Implementation Plan project overview, community meeting, outcomes.</li> <li>Meet and Greet sessions planned for communities and Baker Lake in Sept and October.</li> <li>Agnico had Emergency Response Training meeting (preliminary) with Hamlet, more individual group meetings will follow-Fire dept, SAR and other responders.</li> <li>First Aid course to be offered for community</li> </ul>   | <ul style="list-style-type: none"> <li>Possibility of First Aid course for community has been deferred (KY/GD)</li> </ul>  |
| Vehicle<br>Maintenance<br>Shop-viewing  | <ul style="list-style-type: none"> <li>Kevin/Devon provided overview from 4<sup>th</sup> floor observation deck</li> </ul>  |  |
| Roundtable  | <ul style="list-style-type: none"> <li>NAC-Likes comment re:EI benefits being used up (EN)</li> <li>HTO-Thanks for improvements to snowmobile crossing at K10 but requests improvements to K80 crossing. Also mentions 2 seacans that HTO had previously requested that have not been provided. These to be used for storage of SAR floater suits and caribou for the Fall Community harvest, and also for Joan Scottie for her work re: AWAR road passes. Would like to see garbage can and better signage for ashtray facility at AWAR midpoint (JS)</li> <li>DEA-Is roadkill managed? Education Act being revised-does Agnico have anything to add? Full tanker traveling AWAR at 60+kpm (BO)</li> </ul> | <ul style="list-style-type: none"> <li>RA to consult if improvements would be considered at K80 snowmobile crossing. (HTO will discuss K80 crossing with elders at their meeting claiming Gjoa Haven route.)</li> <li>RA to check on 2 seacans for HTO and advise KY.</li> <li>KY to follow up garbage can request with Luc Choinard.</li> </ul> |



| Agenda Item                      | Description  | Action Items/Due Date   |
|----------------------------------|--|---|
|                                  | <ul style="list-style-type: none"> <li>• <i>Elders</i>-Road to Amaruq has rocky areas that will be hard to clean up should spills occur, advises that road is built along eskers and marshy areas. Advised to go through tundra, not Inuit travel areas.</li> <li>Who can move buildings to area near the gatehouse (Elders' cabin, others)?</li> <li>Would like to have Agnico offer homeland visits as Areva used to.</li> <li>Need dust control-switchback,some lakes (PI)</li> <li>• <i>Health</i>-Likes that MPA Leave guide is documented. suggests that Agnico let people know where to go for assistance, feels that pregnant ladies are released too early (JK)</li> <li>• <i>Hamlet</i>-Baker Lake needs an ambulance.</li> <li>Mentions again desire to find mark mother's (and other members of family) grave sites in Amaruq area (TA)</li> <li>• <i>Youth</i>-Looking for contributions for Youth Center. Will send request to Karen (KS)</li> </ul> | <ul style="list-style-type: none"> <li>• RA to check with Ryan Vanengen for names of elders consulted re: Amaruq road design.</li> <li>• KY to see if 'homeland visits' are possible.</li> <li>• KY to arrange trip for TA to visit graves after his medical travel dates are determined including translator possibly Elizabeth Quinangnaq (sister)/others.</li> </ul> |
| NOTE                             | <ul style="list-style-type: none"> <li>• Would like to hold meetings in the lounge area if possible as the 3<sup>rd</sup> floor meeting room is too far for some elders.</li> <li>• IS/HTO has requested that a map of no hunting area be provided to them (clarification of distance from road at K85)</li> <li>• HTO would like to know when they will receive honoraria for July 9 meeting.</li> </ul>  | <ul style="list-style-type: none"> <li>• KY to follow up on honoraria issue.</li> <li>• RA-is a map for HTO (no hunting area clarified) possible?</li> <li>• HR/Environment-Please note request for closer venue.</li> </ul>  |
| Training Simulator demonstration | <ul style="list-style-type: none"> <li>• Visit and demonstration of Simulator.</li> </ul>  |   |
| Next Meeting                     | <ul style="list-style-type: none"> <li>• To be held in Baker Lake.</li> </ul>  |   |



## **APPENDIX A.6**

**October 24 to November 3, 2016 Notes**





## Meeting Minutes

### PUBLIC MEETINGS

---

**October 24, 2016 Chesterfield Inlet**

**Open house 15-17h - 6 people attended**

How far is Baker Lake from Amaruk? How far is it from Meadowbank?

The pit will create a big hole even if you reflood with water. It is not going to be natural.

How many fish are there in Whale Tail Lake?

How do you do for waste management? We have a lot on site and don't know what to do with it?

How do you recycle?

What environmental programs do you have running?

Could you help us with engineering design to build a bridge on the Josephine river?

**19h-21h - 30 people**

How deep will the pit be?

Will you have tailings at the Whale Tail pit location?

Will you have tailings at the Whale Tail pit location?

Do you have a biologist to treat sewage?

Where does fish go when you start constructing the mine?

Are you still going to be using the runway at Meadowbank?

What will you do with the fish that you will take out from Whale Tail lake?

At closure, when you will transfer back fish into the pit, how do you know they will have food and won't die?

How many ships to Baker Lake once Whale Tail starts?

What will be the effect on archaeological sites (grave, inuksuk, campsite)? Were studies conducted?



**October 25, 2016 Baker Lake**

**Open house 15-17h - people attended**

How will the water flow around the project?

Had it happened that driller got their drill stuck in the hole?

Why don't you build tunnels to access the gold?

**Open house 19-21h -**

When is the construction going to start?

Where are you putting water?

Are you going to re-use the same buildings as for Meadowbank?

What is the plan for the employees? Will you need more employees?

Are there people from Baker Lake working for the NWB

Do you monitor fish going out?

Who do you pay for the loss of fish?

Where is the money going?

Do you have Health and Safety people on site to take care of the people?

When do you plan on starting to dewater?

Where will you send fish?

How deep is the Whale Tail lake? How deep is it where you will dewater?

How fast will you re-water the pit at closure?

When you take care of animals do you take only one person or multiple people (caribou, fish)

What do you do if you over populate the lake with fish when fishing out?

Why do you dewater?

How will you bring in workers?

Are you going to hire more people? Or will it stay the same?



**October 26, 2016 Rankin Inlet**

**Open house 15-17h - people attended**

One presentation done in afternoon

Could you talk with the fed government to get concrete on all roads?

No other questions. Lots of good discussions around 3D lego set and posters.

**Open house 19-21h**

No presentation done.



**November 1, 2016 Naujaat**

**15-17h Open house**

One presentation done

Many discussions around business/employment opportunities table and 3D lego set

Mostly questions to know more about the site. They were very curious. No concerns were expressed.

How can I work at the mine? When is next site readiness program? I have been waiting for a while to get a job. I got my work readiness done.

Where will the mine be? How far is it from Naujaat?

Will you build a mine close to Naujaat?

How big will the pit be?

How many graves did you find close to the mine.

**19-21h Open house. Big turnout. Lots of interest/questions. Karen has final attendance number.**

One presentation done

Same as above and:

How will you clean the water?

How will you clean the water for fish living in it?

How can I get a job? I have applied and still haven't heard from Agnico.

What will the beneficiary get from this mine?

Is it possible to get a job at the mine without education?

How will you close the mine?

Elder that asked the above questions wasn't very concerned - he was rather curious.



**November 2, 2016 Coral Harbour**

16h - Met with Deputy mayor of Coral Harbor  
Discussed job opportunities - process to get hired

**18-21h Open house**

Presentation done. No questions

People were interested in finding work - 6-7 very interested people showed up at the employment and business opportunities table

No concerns expressed. Elders (2) mentioned that they support mining because it will provide work for their children/grand children

Mayor attended the event.

People don't like it in general when fish is transferred from one location to another (fishout). Agnico explained the process of fishout. Person didn't seem too concerned afterwards.

People attending the event were supporting our project and liked Agnico Eagle as a company.

Wondering if we sell arts and crafts and how can they sell arts and crafts at the mine

Interesting fact: the longest road in Nunavut is on Coral Harbor - 170km.





**November 3, 2016 Whale Cove**

14h - landed in Whale Cove, met with mayor at airport

Wondering when the community initiatives funding could be done and what the guidelines will be

**18-21h Open house**

No presentation done

How long is the road

Will there be a processing plant at Amaruq

Does Agnico need more haul truck drivers

How do I apply

Interest in the posters on IQ and TK, and the environmental wildlife road study

What will they do with all the stockpiles/waste dump

Are they going to fill in the pit with the waste rock

How much water will be going into the south part of Whale Tail when dewatering the pit

How many years will the pit operate

When will operation start

How long is the haul truck drive from Meadowbank to Whale tail and how many trips can you do in a shift

Interest in the Apprenticeship program: can I be a cook?

Interest in the Site Readiness program and how they can try out different jobs



## **APPENDIX A.7**

**April 20, 2017 Bake Lake Open House**



Baker Lake Open House (April 20, 2017)

When Meadowbank closes before Amaruq opens, will current employees be transferred or E.I.

What if N.I.R.B. doesn't approve Amaruq? What happens to employees?

Agnico is here to help you, young people – go voice your concerns and talk to the people here. Agnico opens their doors to train you

Agnico IIBA helping Inuit – providing training needed for trades ecs (etc?)

Unilingual workers?

Inuit monitors – land, water, sites, rock types. Descendants from area

Crown land use? Need licence?

Layoffs happen, layoff southerners first

If Whale Tail does not proceed, what is the time period for layoffs?

– spills in winter, better monitor

Does every applicant have to go through work readiness?

Labour pool size?