



AGNICO EAGLE

MEADOWBANK DIVISION

Whale Tail Pit – Emergency Response Plan

**VERSION 1_NWB
MAY 2019**

EXECUTIVE SUMMARY

Agnico Eagle Mines Limited – Meadowbank Division Agnico Eagle) is proposing an expansion to the Whale Tail Pit and Haul Road Project, a Meadowbank satellite deposit located on the Amaruq property. As an expansion to the Approved Project (Nunavut Impact Review Board (NIRB) Project Certificate No. 008 and Nunavut Water Board (NWB) Type A Water License 2AM-WTP1826) Agnico Eagle is proposing to expand and extend the Whale Tail Pit operations to include a larger Whale Tail open pit, development of the IVR open pit, and underground operations while continuing to operate and process ore at the Meadowbank Mine. This plan has been updated for the Expansion Project in support of the Nunavut Water Board (NWB) Type A Water License Amendment Process.

The Emergency Response Plan (ERP) is activated when an operations-related emergency, accident or malfunction occurs, or if such an incident is foreseeable. The ERP outlines potential emergency scenarios, initial actions for emergencies and the internal and external resources available including personnel, emergency response equipment and communication systems. This ERP applies to the Whale Tail Pit Approved and Expansion Projects and the Whale Tail haul road, between Meadowbank and Whale Tail open pit.

IMPLEMENTATION SCHEDULE

This Plan will be implemented immediately upon regulatory approval.

DISTRIBUTION LIST

Agnico Eagle – General Mine Manager / Designate
Agnico Eagle – General Pit Supervisor or Site Manager
Agnico Eagle -- General Superintendent General Services
Agnico Eagle – Health and Safety Superintendent / Designate
Agnico Eagle – Human Resources Superintendent / Designate
Agnico Eagle – Engineering Superintendent / Designate
Agnico Eagle – Geology Superintendent / Designate
Agnico Eagle – Environment Superintendent / Designate
Agnico Eagle – Process Plant Superintendent / Designate
Agnico Eagle – Energy and Infrastructures Superintendent / Designate
Agnico Eagle – Mine Superintendent / Designate
Agnico Eagle – Maintenance Superintendent / Designate
Agnico Eagle – Emergency Response Counselors
Agnico Eagle – OHSC Co-chairs
Agnico Eagle – Security
Agnico Eagle – General Supervisor Inventory

DOCUMENT CONTROL

Version	Date (YY/MM/DD)	Section	Page	Revision
WT	16/06/15	All	All	An appendix to the existing Meadowbank ERP
1_NIRB	18/12/20	All	All	Emergency Response Plan as Supporting Document submitted to the Nunavut Impact Review Board for review and approval as part of Whale Tail Pit – Expansion Project
1_NWB	19/05/07	All	All	Emergency Response Plan in support of the Nunavut Water Board (NWB) Type A Water License Amendment Process.

TABLE OF CONTENTS

1	INTRODUCTION	6
1.1	PURPOSE AND SCOPE OF THE EMERGENCY RESPONSE PLAN.....	6
1.2	AEM’S POLICY STATEMENT	7
1.3	Primary Emergency Response Obligations.....	7
1.4	POLICY WITH RESPECT TO CONTRACTORS AND VISITORS	7
2	ORGANIZATION AND JOB RESPONSIBILITIES.....	8
2.1	WHALE TAIL PIT - EXPANSION PROJECT EMERGENCY CONTROL TEAM.....	8
2.1.1	Official-in-Charge.....	8
2.1.2	General Superintendents.....	10
2.1.3	Incident Commander.....	10
2.1.4	Emergency Coordination Center Scribe	11
2.1.5	Whale Tail Pit - Expansion Project Muster Stations Coordinator	11
2.1.6	Whale Tail Pit - Expansion Project Emergency Response Team Duties.....	12
3	EMERGENCY RESPONSE EQUIPMENT.....	12
4	COMMUNICATION SYSTEMS	13
5	EMERGENCY MEASURES.....	13
5.1	FIRE	13
5.2	WHEN IT IS SAFE TO DO SO:	13
5.3	MUSTER POINT	13
6	MEDICAL EVACUATION PLAN	14

LIST OF FIGURES

Figure 1.	Whale Tail Pit - Expansion Project Access	16
Figure 2.	Whale Tail Camp - Site Layout	17

LIST OF TABLES

Table 1.	Whale Tail Site Internal Emergency Response Contacts.	8
----------	--	---

1 INTRODUCTION

Agnico Eagle Mines Limited – Meadowbank Division (Agnico Eagle) is proposing an expansion to the Whale Tail Pit and Haul Road Project, a Meadowbank satellite deposit located on the Amaruq property. As an expansion to the Approved Project (Nunavut Impact Review Board (NIRB) Project Certificate No. 008 and Nunavut Water Board (NWB) Type A Water License 2AM-WTP1826) Agnico Eagle is proposing to expand and extend the Whale Tail Pit operations to include a larger Whale Tail open pit, development of the IVR open pit, and underground operations while continuing to operate and process ore at the Meadowbank Mine. This plan has been updated for the Expansion Project in support of the Nunavut Impact Review Board (NIRB) review process and will be updated for review and approval by the Nunavut Water Board.

Access to the Whale Tail Pit Approved and Expansion Projects site is via the 64 km Whale Tail Pit Haul Road that connects the Whale Tail Pit site to Vault Pit and the approved Meadowbank mine site. The Meadowbank Mine site is accessible to Baker Lake by the All Weather Access Road, which connects Meadowbank to the Hamlet of Baker Lake (Refer to Figure 1). This ERP covers construction, operations and closure of Whale Tail Pit Approved and Expansion Projects and is an Appendix to the approved Meadowbank ERP.

1.1 PURPOSE AND SCOPE OF THE EMERGENCY RESPONSE PLAN

The purpose of this Emergency Response Plan (ERP) is to provide a consolidated source of information for management, employees, contractors, and site visitors to respond quickly and efficiently to any emergency that may occur at the Whale Tail Pit – Approved and Expansion Projects operations.

The goal of the ERP is to provide:

- A clear chain of command for safety and health activities;
- Well-defined corporate expectations regarding safety and health;
- Comprehensive hazard prevention and control methods; and
- Record-keeping requirements to track program progress.

Agnico Eagle will ensure that all management, employees, contractors and site visitors at Whale Tail Pit Approved and Expansion Projects fully understand and comply with all legislated safety standards, and the policies and procedures outlined in this appendix and the Main Meadowbank ERP. The ERP is a working document that will be reviewed and updated by the ERT and Health and Safety department on a regular basis, as required. Upon regulatory approval of the Whale Tail Pit - Expansion Project, it will be reviewed annually, or more frequently as required, to ensure compliance with applicable legislation, to evaluate its effectiveness and to continually improve the procedures.

All management, employees, contractors and site visitors are encouraged to offer suggestions for ways to eliminate potential hazards and improve work procedures.

1.2 AGNICO EAGLE'S POLICY STATEMENT

Agnico Eagle believes that all loss due to accidents/incidents is preventable. We aim to operate a safe and healthy work place that is injury and fatality free. We believe that if we all work together, we can achieve zero accidents in the work place and enhance the well-being of employees, contractors and communities.

Senior management is responsible for making funds and other resources available, including hiring and having trained qualified personnel, to ensure the successful implementation of the ERP in the event of an emergency. All supervisors are responsible for ensuring that their employees are aware of, and trained in, the proper emergency response procedures and that procedures and contact information are posted in all work areas. Supervisors are also responsible for ensuring that all employees follow safe work methods and all related regulations to prevent emergencies from occurring, and that they are provided with the proper tools to do so, including Personal Protective Equipment (PPE).

1.3 PRIMARY EMERGENCY RESPONSE OBLIGATIONS

The Whale Tail Pit Approved and Expansion Projects are located approximately 64 km away from the Meadowbank site. Due to this distance and the type of equipment available on site, there is a small auxillary ERT team at the Whale Tail site that will maintain the primary responsibility to respond to emergencies within the scope of their training and ability. The ERT works in collaboration with the Amaruq Exploration ERT (located nearby but their team is focused on responding to Exploration activities). During emergencies, the Meadowbank ERT and coordination centre will be contacted and asked to 'STAND BY' to provide advice and additional support as conditions, weather, equipment and severity of emergency dictates. Contact between Meadowbank, Whale Tail and Amaruq Exploration Camp will continue until the situation is resolved or a STAND DOWN is declared.

Note: In the event the Whale Tail Project requires immediate emergency assistance from Meadowbank, the procedure is to call 6911 on the camp telephone, and announce:

"Code 1 Meadowbank, Code 1 Meadowbank, Code 1 Meadowbank ", and:

Announce information in this order:

Who you are, 2. Where you are, 3. Nature of the event.

1.4 POLICY WITH RESPECT TO CONTRACTORS AND VISITORS

Every person working at or visiting the Whale Tail Pit Approved and Expansion Projects site shall receive an orientation upon arrival and as such is apprised of, and required to follow, the ERP policies and procedures set forth in this manual. For a complete list of all responsible supervisors or designates for the Meadowbank Mine, refer to Section 2 of the Main Meadowbank ERP.

2 ORGANIZATION AND JOB RESPONSIBILITIES

In the event of an emergency, the Whale Tail Project Supervisor or Site Manager (or designate) will assume the role of Official in Charge (OIC). If the Site Manager is indisposed or injured in the emergency, the ERT Captain at Whale Tail will assume the role. All employees are responsible for:

- Ensuring site and personnel safety;
- Knowing the location of first aid stations and supplies, emergency and safety equipment (e.g., fire extinguishers, Materials Safety Data Sheets (MSDS), Spill Kits, First aid kits emergency exits, and muster stations;
- Wearing appropriate personal protective equipment (PPE) for the task at hand;
- Reporting all emergencies to their supervisor; and
- Reporting by radio to the Site Manager on the Whale Tail Project working radio channel to describe the type, location, and nature of the emergency, including possible injuries, trapped personnel, and the presence of any chemical or explosive hazards. If no communication by the camp telephone or radio is possible, satellite phones can be used.

2.1 WHALE TAIL PROJECT EMERGENCY CONTROL TEAM

Table 1. Whale Tail Site Internal Emergency Response Contacts.

Position and Name	Pager and/or Phone Number
Whale Tail Project Supervisor	TBD
Incident Commander	TBD
Maintenance Supervisor	TBD
Etc.	

2.1.1 Official-in-Charge

The Official-in-Charge (Superintendent at the Whale Tail Project, Pit Supervisor, Whale Tail Manager or designates) will take charge for overseeing and approving the overall emergency response strategy.

Immediate duties of the Official-in-Charge include:

- Consult with the Incident Commander on the status of emergency.
- Appoint a scribe to maintain a written record of the time and events, all discussions,

- instructions and decisions made by the Emergency Control Team;
- Appoint a Muster Station Coordinator, who will ensure that proper head counts are conducted at three (3) designated muster stations at the Meadowbank site or at the two (2) designated muster stations at the Whale Tail camp site (Refer to Figure 2 with site layout and proposed muster station locations), depending on the location of the emergency;
- Assign specific tasks to members of the Emergency Control Team as they arrive at the Control Room;
- Brief the Emergency Control Team;
- Ensure that the safety of personnel is maintained throughout the operation;
- Ensure procedures are in place for prompt dispatch of requested personnel, materials and equipment to the emergency area;
- Arrange for all reports to be presented at specific intervals to the Emergency Control Team;
- Finalize the recommendations of the Incident Commander for rescue and recovery operations;
- The Official-in-Charge is the only person authorized to release information to Government Agencies, Corporate Office and/or Local Communities but this responsibility may be delegated to another member of the Emergency Control Team. In releasing information, the Official-in-Charge is to:
 - Verify all information before release;
 - Keep a record of all inquiries (media, government and members of the public);
 - Not speculate on causes;
 - Not speculate on resumption of normal operations or when the problem will be solved; and
 - Advise that further updates will be forth coming.
 - Notify corporate management if the following occur:
 - Fatality;
 - A serious injury or multiple injuries;
 - In the event of a public health or environmental risk;
 - An incident involving hazardous chemicals where the volume or possible chemical reactions (i.e.; cyanide) could lead to serious consequences;
 - A spill of effluent, contaminated water or chemical substance outside the confines of the Project sites (i.e.; an external spill);
 - Operations are to stop for an extended time; and
 - Government authorities, public and/or media are to be informed of the emergency.
- Ensure all response teams, regulatory agencies and any other agency on emergency alert are advised when the emergency has ended;
- Ensure all documentation (i.e.; notes, log sheets, written instructions, etc.) is gathered for the creation of the final report; and
- Participate in debriefing.

2.1.2 General Superintendents

The responsibilities of the General Superintendents at Meadowbank and Whale Tail include:

- Superintendents of General Services and Operations and Maintenance will report to the Emergency Control Room and support the General manager/Designate in whatever capacity required;
- Ensure that all Department Superintendents or their designates are aware of the emergency; and
- Assist with the investigation and write up of the final report.

For a complete list of all emergency response contact information, other response designates and associated duties refer to Section 2 and 3 of the Meadowbank ERP.

2.1.3 Incident Commander

The Incident Commander is usually a trained staff member such as an ERT Coordinator or a Superintendent. The responsibilities of the Incident Commander include:

- Ensure Security is notified of the emergency;
- If required, ensure the evacuation procedures are activated, if required;
- Ensure that there are sufficient ERT members available to respond to the emergency;
- Ensure that the ERT has back-up support such as a standby ERT from Whale Tail or Meadowbank, depending where the emergency occurred;
- Ensure that ERT has refreshments and nourishment (if the emergency requires several hours to resolve);
- Assess the size and severity of the emergency and the likely consequences;
- Establish response priorities;
- Maintain communication with the ERT Captain;
- Advise the Official-in-Charge of the ERT's activities, regarding the rescue and recovery operations;
- Appoint sufficient personnel, equipment and outside services are available. Utilize the members of the Emergency Control Team to organize these resources;
- Advise Official-in-Charge when the emergency situation is under control and give the
- "All Clear";
- Participate in emergency investigation;
- Coordinate an orderly return to normal operating conditions;
- Arrange for a debriefing session, and utilize the services of all involved in resolving the emergency; and
- Assist in writing the final report.

2.1.4 Emergency Coordination Center Scribe

The Emergency Coordination Center Scribe is to keep a systematic record of events from the start of the emergency through all phases to its termination. The record is to be legible and record all relevant information, as it will be used in the debriefing following the conclusion of the emergency and in the preparation of the final report. The individual selected should have experience in recording events and decisions clearly and succinctly during the emergency.

- The record taken by the scribe is to include:
- An accurate head count from the muster stations during an emergency;
- Date and time the incident was reported and who reported the incident;
- Every person entering or exiting the Emergency Control Room;
- Record all developments as they occur;
- Record all phone calls, all discussions and decisions made;
- Record any other information that needs to be captured for the final report;
- Keep all the sheets of paper used to record information numbered for the final report;
- All the pages will be initialed by the recorder and Official-in-Charge; and
- The official document will stay with the Health & Safety Department upon completion of the emergency.

2.1.5 Whale Tail Project Muster Stations Coordinator

When the site's Management begins to assemble in the Emergency Control Room, the Official-in-Charge (manager or designate) will assign a member of the Management Team to be the Muster Stations Coordinator.

The responsibilities of the Muster Stations Coordinator includes:

- The Muster Stations Coordinator is required to contact the site's Muster Stations by radio on channel "Spare RPTR" to ensure that there is a Supervisor or designate in charge of that specific muster station and give him/her 20 minutes to complete the head count;
- The Muster Stations Coordinator will need to record the time the muster station was called, who is in-charge of the muster station, and any other instructions that were given; and
- The Muster Stations Coordinator needs to open the Flo (the logistics software system that tracks employees onsite) on his/her laptop in order to cross reference the names once they receive the written or electronic lists from the Muster Stations. (Additional persons may need to be assigned to assist with the cross reference, in order to complete the head count in a timely manner).

2.1.6 Whale Tail Project Emergency Response Team Duties

The responsibilities of the ERTs at Meadowbank and Whale Tail include:

- The ERT Members must report to the fire hall when a Code One emergency is called;
- ERT Members will be given instructions on the emergency by the Incident Commander;
- ERT Members will follow instructions from the Incident Commander and not place the Team at risk; and
- The ERT Captain will maintain radio contact with the Incident Commander throughout the emergency.

For a complete list of all emergency response contact information, other response designates and associated duties refer to Section 2 and 3 of the Meadowbank ERP. The list of responsible personnel specific to the Whale Tail Project operations will be updated by the Meadowbank ERT and Health and Safety department prior to the operation of the Whale Tail Pit Project.

3 EMERGENCY RESPONSE EQUIPMENT

- In remote areas safety heavily relies on communications and equipment. The Whale Tail Project camp will be equipped with fire, medical air and land transport, power generation and trained personnel.
- Every First Aid Station is equipped with a First Aid kit and fire extinguisher (First Aid Station at Muster 1 also has an Iridium Satellite phone).
- All personnel engaged in outdoor activities are equipped with and trained in the use of a GPS SPOT Messenger device. A real time location of each unit can be accessed on- line 24/7.
- All personnel working away from camp will be equipped with a radio, depending on the radio repeater range as well as a satellite telephone. Personnel will also carry and be trained in the use of a SPOT GPS device with charged lithium batteries.
- The drills have a shelter stocked with emergency food, generator and heater in case of emergency. At the drill there are radios and a satellite phone.
- There is a Snow Cat on station and operators in camp.
- There will be either a helicopter or fixed wing aircraft, or both, stationed and working throughout the length of the drill program.
- The helicopter has a complete survival kit (food for 6 persons for 7 days, tent, etc.), a first aid kit, an extinguisher, an ELT (Emergency location transmitter), a satellite phone and a GPS linked to its main office.
- Electrical power generation for camp heat and light. In the event of a camp evacuation, a spare generator and fuel is located in the emergency storage container located next to the core shack (muster station #2).
- To react to animal attack, bear sprays and bear horn are available at the Whale Tail Project camp.

4 COMMUNICATION SYSTEMS

Key site personnel will be accessible at all times via portable radios, office radios or telephone. For on-site communication (between the camp, supervisors, operators, drills, surveyors, equipment operators), hand-held radios are mandatory. Satellite phones will be available to all personnel working away from camp. Secondary communications will be via the camp phone system, backed up by satellite phones. Back-up power sources and replacement batteries for communications equipment will be available to provide continuous, uninterrupted operation either at fixed facilities or at emergency sites.

5 EMERGENCY MEASURES

In ANY Emergency all work will stop.

5.1 FIRE

All personnel to receive basic training in the use of fire extinguishers and key personnel at Whale Tail camp will receive ERT training by the Meadowbank personnel. For any situation involving fire, the first action will be to extinguish the fire if it is safe to do so and then report the incident. If the fire cannot be put out safely, the Emergency Fire Response Plan will be enacted.

In the event that a fire causes damage to equipment, Whale Tail site buildings, or hazardous material, particulates and/or gases could be released into the air, and hazardous materials and/or other chemicals (e.g., fuels, oils, battery acid, etc.) could be spilled. In the short-term, this could result in air quality degradation, and potentially affect the local vegetation in the case of a spill or burn scar. Should such scenarios occur, the following actions will be taken in collaboration with the Environmental department, as required and

5.2 WHEN IT IS SAFE TO DO SO:

Collection and incineration of all putrescible (food items);

Air quality monitoring for airborne emissions;

Removal of debris and contaminated soil for disposal on-site or off-site at a licensed disposal facility;

5.3 MUSTER POINT

In the event that a camp evacuation is necessary, it is important that all affected personnel leave the emergency area and congregate at a pre-determined area or Muster point so that a head count can be taken to determine if there are any missing persons (Refer to Figure 2 for proposed Whale Tail Project Muster Points). Employees must remain at the muster point until the supervisor of the emergency area gives permission to return to work.

Upon hearing an alarm, or evacuation alarm:

- **Do Not Panic** – Always be prepared for weather conditions - dress appropriately (Winter clothing during winter months).
- **DO NOT delay** and **DO NOT stay** and finish work before taking the proper steps to evacuate.
- **Always** head to the **closest EXIT** door and follow **EXIT** signs to the closest outside door.
- Once outside proceed immediately to the predetermined **“Muster point”**.
- Once at the **“Muster point”** Stay put until relieved or instructed otherwise by your Supervisor.
- Your Supervisor and/or Senior Management person in your dept. will make a **Roll Call**
- **(head count)** of everyone in his/her department. Personally confirm your name is on the **Muster List**.
- **DO NOT enter** a building when the alarm is sounding. Head straight to a **“Muster point”**.
- **Never** go through a building to get to a **“Muster point”**. Once you are outside, the first door you open should be the one to the **“Muster point”**.
- **Never** pass through smoke going to a muster point. If smoke blocks the hallway/pathway, use an alternate exit or go to the alternate muster point.
- **Never** disregard an evacuation alarm. We understand that the system goes off without incident on occasion, but to disregard an ***alarm is to endanger your life and the lives of others.***
- **Stay in “Muster point”** until you are instructed to **“Stand Down”** by the PIC.
- **Do Not** leave **“Muster point”** to go outside for a smoke. It is important for your Supervisor to know where you are at all times – especially during an **“Emergency”**.
- The only person authorized to initiate a **“Stand Down”** is the PIC or the Site Manager or designate.
- **Failure to follow** proper Evacuation Procedures will result in Disciplinary Action.
- The **“Muster points”** for Whale Tail Pit - Expansion Project will be determined by the Whale Tail Pit - Expansion Project ERT team, identified with signs and communicated to all employees.

6 MEDICAL EVACUATION PLAN

- The Whale Tail Project auxiliary ERT will be the primary responder to on-site injuries but will contact the Meadowbank nurse/facility and Meadowbank ERT team as soon as practical for advice and assistance if needed. The Medical Evacuation plan procedures in the Meadowbank Response Plan will be followed and are outlined in Section 5 of the approved plan. In certain circumstances, if a spontaneous evacuation is initiated from Whale Tail Project, the Meadowbank First Aid Treatment Room will be provided with as much advance notice as possible.

- Once the “Mechanisms of Injury” and the patient’s condition have been assessed, a decision will be made (by the Nurse / Medic), whether a Medevac is required and decide on ground or air transportation. There are guidelines to follow to make this determination.
- Meadowbank Nurse / Medic, the Whale Tail Project First Responders and the Emergency control team, will apply the protocol and procedures described in the Meadowbank ERP to advise and help formulate an appropriate response.
- Depending on the type of injury the Meadowbank nurse may be transported to Whale Tail Project to stabilize, administer emergency care and then accompany the patient to Meadowbank or a regional hospital. This determination will be made on a case by case basis as advised by the MBK nurse.
- If a medical evacuation to Meadowbank is required, the Whale Tail Haul Road will be used. The patient will be transferred to the Meadowbank facility or directly to a regional hospital via helicopter, depending on the type of injury and the advice of the Meadowbank nurse.
- Vehicles transporting casualty(s) will have priority over any other vehicle on site.
- As soon as the immediate actions required to resolve the emergency are completed, the Meadowbank General Manager or designate will inform the authorities, nurses and required health care specialists according to the Meadowbank ERP.

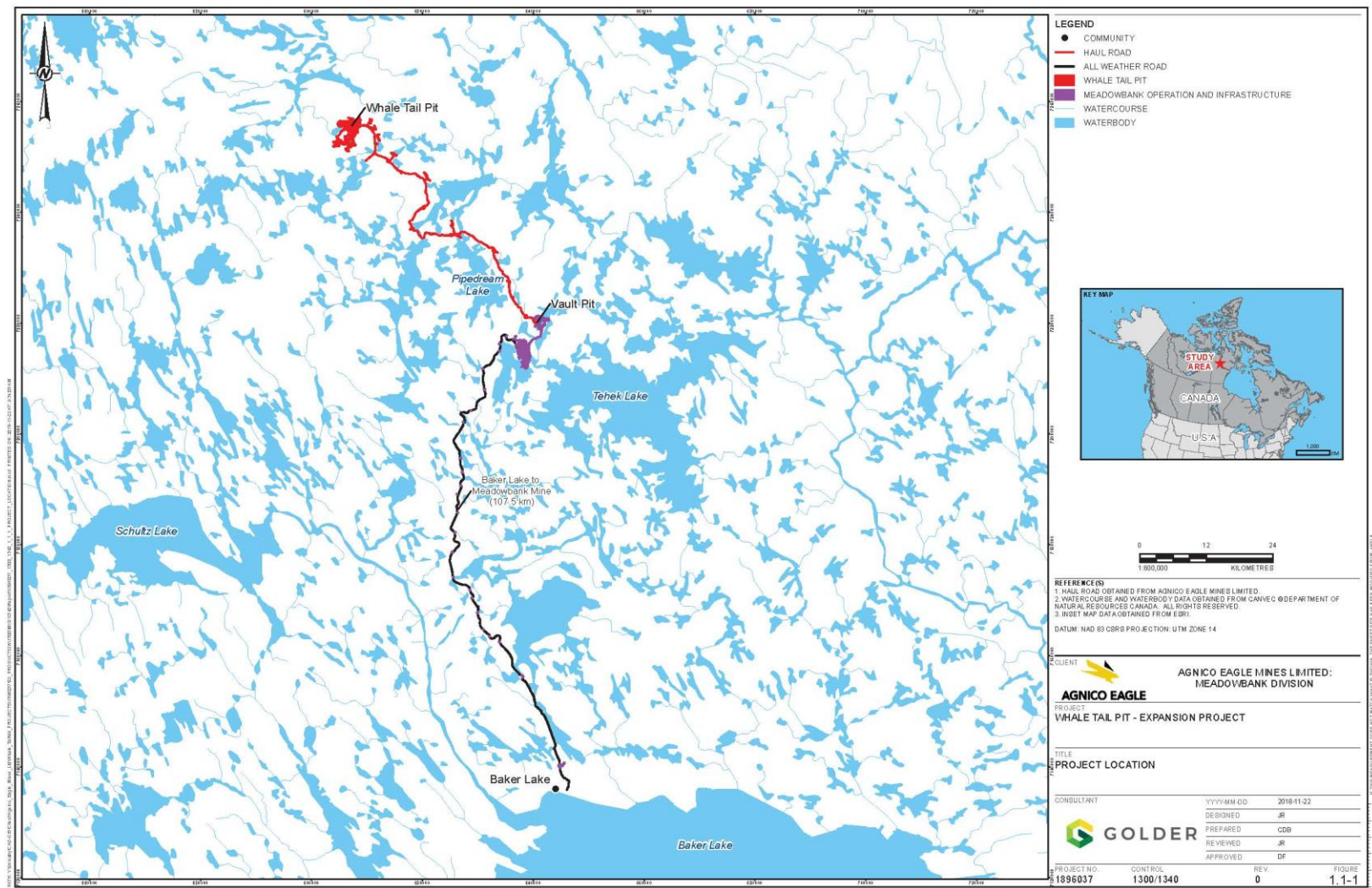


Figure 1. Whale Tail Pit Approved and Expansion Projects Access

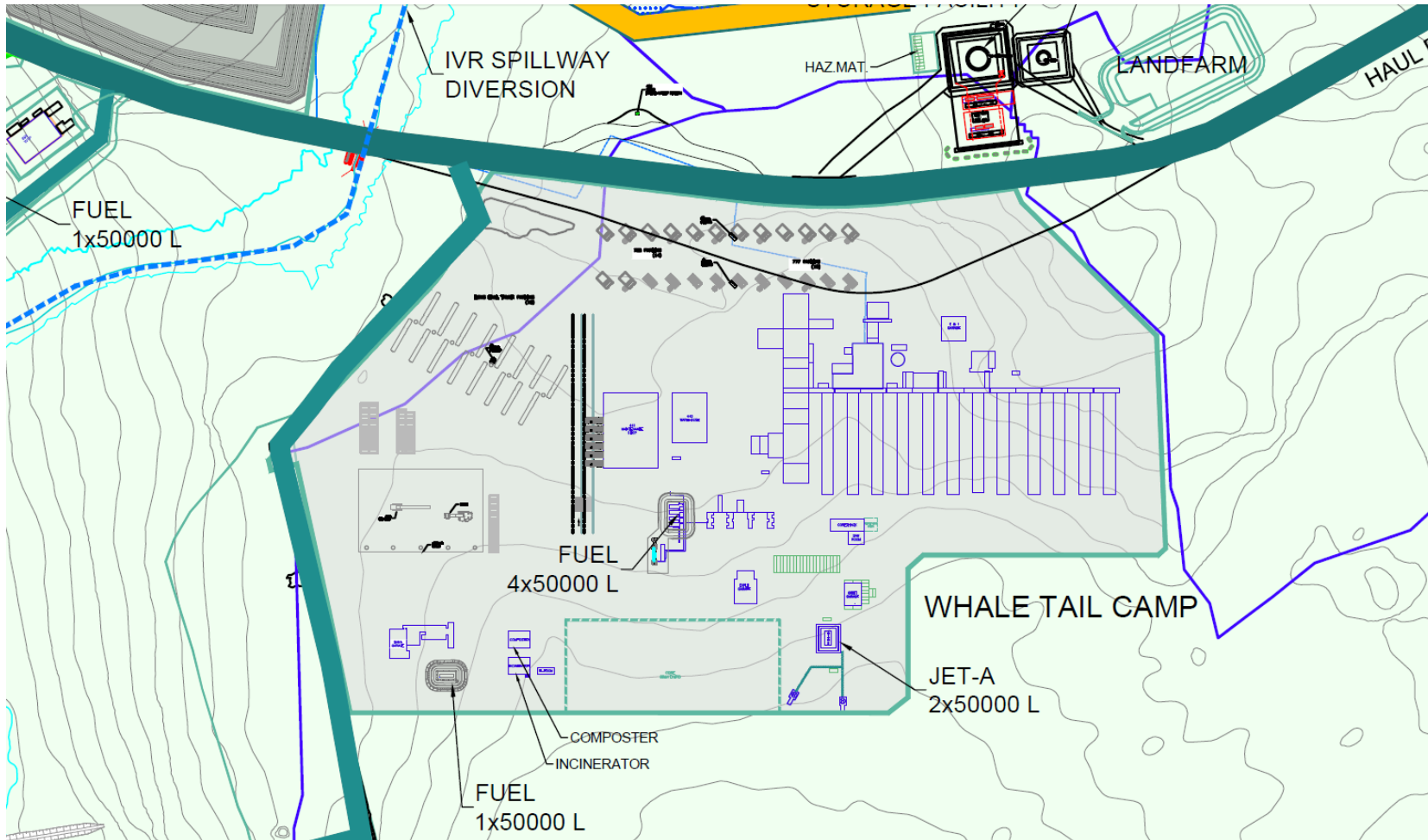


Figure 2. Whale Tail Camp - Site Layout