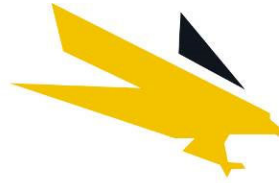


Appendix 22

Meadowbank Mine Waste Rock and Tailings Management Plan Version 12



AGNICO EAGLE

MEADOWBANK GOLD MINE

**WASTE ROCK AND TAILINGS MANAGEMENT PLAN
V12**

MARCH 2022

EXECUTIVE SUMMARY

Agnico Eagle Mines Ltd. Meadowbank Division (AEM) is operating the Meadowbank Gold Mine (the Mine), located on Inuit-owned surface lands in the Kivalliq region approximately 70 km north of the Hamlet of Baker Lake, Nunavut. The Mine is subject to the terms and conditions of both the Project Certificate issued in accordance with the Nunavut Land Claims Agreement Article 12.5.12 on December 30, 2006, and the Nunavut Water Board Water License No. 2AM-MEA1530 issued in May 2020. This report presents the annual update of the Mine Waste Rock and Tailings Management Plan for Meadowbank mine.

The Meadowbank Mine consists of several gold-bearing deposits: Vault, Portage and Goose Island. Prior to the beginning of mining a series of dikes were built to isolate the mining activities from neighbouring lakes.

Waste rock from the Portage and Goose Island Pits is stored in the Portage Rock Storage Facility (Portage RSF), and in the Portage Pit as infill. The Portage RSF was constructed in a way to minimize the disturbed area and is capped with a 4m layer of non-acid-generating rock to constrain the active layer within relatively inert materials as part of progressive reclamation. This control strategy is designed to minimize the onset of oxidation and the subsequent generation of acid rock drainage through freeze control of the waste rock as a result of permafrost encapsulation and capping with an insulating convective layer of Non-Acid Generating (NAG) rock. The waste rock below the capping layer is expected to freeze, resulting in low rates of acid rock drainage (ARD) in the long term. Thermistors currently installed in the Portage RSF indicate that freezing is occurring.

Mining commenced at the Vault Pit mining operation in 2014 and concluded in June 2019. Waste rock from the Vault Pit, Phaser Pit, and BBPhaser Pit mining operation is stored in the Vault Waste Rock Storage Facility (Vault RSF). Geochemical predictions indicate that a capping layer will not be required at the Vault RSF as the majority of waste rock produced is NAG. To date, through the ARD testing program, it has been determined that approximately 85.5 % of the waste rock generated is NAG. As a precaution, Potentially Acid Generating (PAG) waste rock was placed in the middle of the Vault RSF and this material will be covered with at least 4m of NAG to minimize any generation of ARD and to promote freeze back.

The Tailings Storage Facility (TSF) is located with the Portage Pit Area and comprises the South Cell and the North Cell. These cells are delimited by tailings retaining dikes that are progressively built as capacity is required. The division of the TSF into cells allows tailings management in comparatively smaller areas with shorter beach lengths that reduce the amount of water that is trapped and permanently stored as ice. Operation in cells also allows progressive closure and covering.

Following the authorization of the in-pit amendment in 2019 the tailings deposition plan was reviewed to include tailings deposition in Goose Pit, Portage Pit A and Portage Pit E. This strategy will allow

storage of tailings within mined out pits to achieve the required capacity without requiring further raises of the North Cell and South Cell of the TSF.

Tailings are deposited sub-aerially and sub-aqueously as a slurry using the end of pipe technique. Tailings deposition is alternated between the North Cell, South Cell, and the approved in-pit deposition pits depending on the tailings deposition plan. In 2021, tailings deposition occurred in the North Cell and Pit E.

Following mine operations, a minimum 2-m thick cover of NAG rockfill will be placed over the tailings in the North Cell and the South Cell of the TSF as an insulating convective layer to confine the active layer within relatively inert materials. The final thickness of the rockfill cover layer will be confirmed in the final design based on thermal monitoring to be completed during operations. The control strategy to minimize water infiltration into the TSF and the migration of constituents out of the facility includes freeze control of the tailings through permafrost encapsulation. Progressive capping is ongoing in the North Cell since 2015.

Thermal monitoring is ongoing to observe the freezeback of the TSF and RSFs. Additional instruments will be installed at closure. Thermistors currently installed in the TSF indicate that freezing is occurring.

All infrastructures needed for mine operations, closure and reclamation, including mine waste management areas, will be re-contoured and/or surface treated during closure, according to site specific conditions, to minimize windblown dust and erosion from surface runoff.

DOCUMENT CONTROL

Version	Date (YM)	Section	Page	Revision
1	2009/10	All	All	Original Plan
2	2013/04	All	All	Comprehensive update to Original Plan
3	2014/03	All	All	Comprehensive update to Original Plan
4	2015/03	Section 1, 2, 3, 4, 5, 6		Updated with the actual Life of Mine (LOM) for operations ending in Q3 2017
		Section 7		Updated according to the tailings deposition plan and water balance for the actual Life of Mine (LOM) for operations ending in Q3 2017
		Section 8		Updated according to additional instruments installed and future monitoring plan
		Section 9		Updated according to additional monitoring plan for final closure design
5	2016/03	All	All	Comprehensive update to Original Plan
6	2017/03	All	All	Comprehensive update to Original Plan
7	2018/03	All	All	Comprehensive update to Original Plan
8	2019/03	All	All	Comprehensive update to Original Plan.
9	2019/07			Interim update to 2018 plan to include in-pit disposal following authorization of amendment
10	2020/03	All	All	Comprehensive update to Original Plan.
11	2021/03	All	All	Comprehensive update to Original Plan.
12	2022/03	All	All	Comprehensive update to Original Plan.

Prepared By: Environmental Department

Approved by:

Alexandre Lavallee – Environment & Critical Infrastructure
 Superintendent

Table of Contents

1	INTRODUCTION.....	8
2	BACKGROUND INFORMATION.....	9
2.1	Site Conditions.....	9
2.1.1	Climate.....	9
2.1.2	Faults.....	11
2.1.3	Permafrost	12
2.2	Mining Operation Description.....	15
2.2.1	Portage Pit Area.....	15
2.2.2	Goose Pit Area	17
2.2.3	Vault Pit Area	18
2.3	Tailings Storage Facility Description.....	18
2.3.1	In-Pit Tailings Storage Description.....	19
3	MINE DEVELOPMENT PLAN	21
3.1	Mine Waste Production Sequence.....	21
4	OVERBURDEN MANAGEMENT.....	23
4.1	Lakebed Sediments	23
4.2	Till	23
5	WASTE ROCK MANAGEMENT.....	24
5.1	Waste Rock Management Strategy.....	24
5.2	Waste Rock Storage Facility Characteristics.....	24
6	TAILINGS MANAGEMENT	26
6.1	Tailings Management Strategy.....	26
6.1.1	TSF Tailings Management Strategy.....	26

6.1.2	In-Pit Tailings Management Strategy.....	27
6.2	Tailings Deposition	28
6.2.1	Parameter Analysis	29
6.3	Tailings Deposition Plan – 2022-2026	30
6.4	Monitoring of Tailings Seepage.....	33
6.5	Monitoring of Tailings Dust	33
7	CONTROL STRATEGIES FOR ACID ROCK DRAINAGE – COVER DESIGN	34
7.1	TSF Cover Design	36
7.2	In-Pit Cover Design	38
7.3	RSF Cover Design	38
8	MONITORING AND CLOSURE.....	39
8.1	TSF Reclamation	39
8.2	In-Pit Closure	40
8.2.1	Pore Water Quality	40
8.3	RSF Closure	40
9	REFERENCES.....	45

List of Tables

<i>Table 2-1: Estimated Average Monthly Climate Data – Meadowbank Site</i>	<i>10</i>
<i>Table 2-2: Summary of Reported Climate Change Rates Used in Northern Projects Engineering Studies</i>	<i>13</i>
<i>Table 2-3: TSF Infrastructure Description</i>	<i>20</i>
<i>Table 3-1: Summary of Mine Waste Tonnage and Destination</i>	<i>22</i>
<i>Table 3-2: Projected Use of NPAG/NML Waste Rock Tonnage for Closure and Reclamation.....</i>	<i>22</i>
<i>Table 5-2: Details of Rock Storage Facilities</i>	<i>25</i>
<i>Table 6-1: Deposition Location (Realized)</i>	<i>29</i>
<i>Table 6-2: Yearly Tailings Deposition Parameter Evolution – TSF</i>	<i>29</i>
<i>Table 6-3: Yearly Tailings Deposition Parameter Evolution – IPD</i>	<i>30</i>
<i>Table 6-4: Deposition Plan – Summary.....</i>	<i>32</i>
<i>Table 7-1: Acid Mine Drainage Control Strategies of the Arctic.....</i>	<i>35</i>

List of Figures

Figure 2-1: Meadowbank Mine Location	9
Figure 2-2: Portage Pit Area Fault Locations	12
Figure 2-3: Annual average temperature estimated for the RCP4.5, RCP6.0 and RCP8.5 climate change scenarios. Observed temperature at Baker Lake is also shown.	15
Figure 2-4: Portage Pit and Tailings Storage Facility Infrastructures	16
Figure 2-5: Goose Pit Area Map	17
Figure 2-6: Vault Pit Area Map	18
Figure 5-1: Waste Rock Expansion Area (Temporary NAG Storage Area).....	25
Figure 8-1: Site Post Closure Concept	42
Figure 8-2: Portage Tailings and Rock Storage Closure Design Concept Cross Section	43
Figure 8-3: Vault Rock Storage Closure Design Concept Cross Section.....	44

Appendices

Appendix A: Meadowbank Mined Material Balance (2009-2022)

Appendix B: TSF Integrated Deposition Plan

1 INTRODUCTION

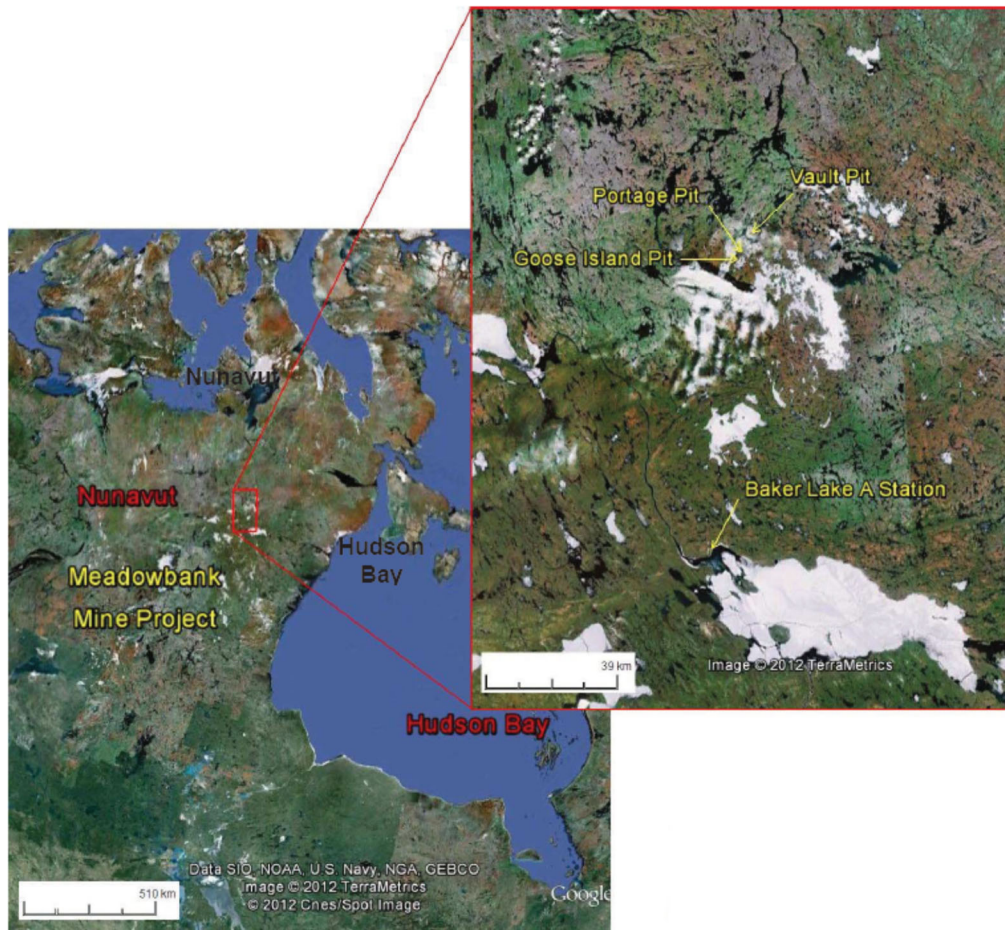
Agnico Eagle Mines Ltd. Meadowbank Division (AEM) is operating the Meadowbank Gold Mine (the Mine), located on Inuit-owned surface lands in the Kivalliq region approximately 70 km north of the Hamlet of Baker Lake, Nunavut. The Mine is subject to the terms and conditions of both the Project Certificate issued in accordance with the Nunavut Land Claims Agreement Article 12.5.12 on December 30, 2006, and the Nunavut Water Board Water License No. 2AM-MEA1530 amended on May 12, 2020.

The management, monitoring, and closure strategies for both the waste rock storage facility and tailings storage facility are presented in this document.

2 BACKGROUND INFORMATION

2.1 SITE CONDITIONS

The location of the Meadowbank mine site is shown in Figure 2.1.



Source: Google Earth Pro, 2012

Figure 2-1: Meadowbank Mine Location

2.1.1 Climate

The Meadowbank region is located within a low Arctic Eco climate described as one of the coldest and driest regions of Canada. Arctic winter conditions occur from October through May, with

temperatures ranging from +5°C to -40°C. Summer temperatures range from -5°C to +25°C with isolated rainfall increasing through September (Table 2-1).

Table 2-1: Estimated Average Monthly Climate Data – Meadowbank Site

Month	Max. Air Temp. (°C)	Min. Air Temp. (°C)	Rainfall (mm)	Snowfall (mm)	Total Precip. (mm)	Lake Evap. (mm)	Min. Relative Humidity (%)	Max. Relative Humidity (%)	Wind Speed (km/h)	Soil Temp. (°C)
January	-29.1	-35.5	0	11.2	11.2	0	67.1	75.9	16.3	-25.5
February	-27.8	-35.2	0	10.5	10.5	0	66.6	76.5	16.0	-28.1
March	-22.3	-30.5	0.1	14.6	14.6	0	68.4	81.4	16.9	-24.9
April	-13.3	-22.5	2.3	16.7	19.0	0	71.3	90.1	17.3	-18.1
May	-3.1	-9.9	9.8	11.3	21.1	0	75.7	97.2	18.9	-8.0
June	7.6	0.0	14.5	3.9	18.4	8.8	62.6	97.2	16.4	2.0
July	16.8	7.2	36.7	0.0	36.7	99.2	47.5	94.3	15.1	10.5
August	13.3	6.4	45.5	0.9	46.4	100.4	59.2	97.7	18.4	9.3
September	5.7	0.9	30.1	8.8	38.9	39.5	70.8	98.6	19.3	3.6
October	-5.0	-10.6	3.5	30.3	33.8	0.1	83.1	97.4	21.4	-2.8
November	-14.8	-22.0	0	23.6	23.6	0	80.6	91.1	17.9	-11.7
December	-23.3	-29.9	0	15.0	15.0	0	73.3	82.7	17.7	-19.9

Note: Data from Baker Lake A station is available from 1946 to 2011. During this period, the data quality is good, with the exception of years 1946 to 1949, and 1993 which were removed from the compilation.

The long-term mean annual air temperature for Meadowbank is estimated to be approximately 11.1°C. Air temperatures at the Meadowbank area are, on average, about 0.6°C cooler than Baker Lake air temperatures, and extreme temperatures tend to be larger in magnitude. This climatic difference is thought to be the effect of a moderating maritime influence at Baker Lake.

The prevailing winds at Meadowbank for both the winter and summer months are from the northwest. A maximum daily wind gust of 93 km/h was recorded on September 1, 2009. Light to moderate snowfall is accompanied by variable winds up to 70 km/h, creating large, deep drifts and occasional whiteout conditions. Skies tend to be more overcast in winter than in summer.

Table 2-1 presents monthly rainfall, snowfall and total precipitation values for the mine site. August is the wettest month, with a total precipitation of 43.4 mm, and February is the driest month, with a total precipitation of 6.1 mm. During an average year the total precipitation is 249.6 mm, split between 147.5 mm of rainfall and 102.1 mm of snowfall precipitation.

2.1.2 Faults

Two main faults are inferred in the Portage deposit area and included in the groundwater model (Golder, 2011) used to estimate groundwater inflows and brackish water upwelling to the pits during mine life. These are the Bay Zone Fault and the Second Portage Fault shown in Figure 2.2 by bright blue lines.

The Second Portage fault trends to the northwest under Central Dike and the Tailings Storage Facilities (TSF), roughly parallel to the orientation of Second Portage Lake. This fault has been identified as a potential pathway for the Central Dike Seepage.

The Bay Zone Fault trends from South to North and crosses Third Portage Lake, Goose Pit and Portage Pit. This fault is a potential pathway for water infiltration from Third Portage Lake into Goose Pit.



The Meadowbank Gold Mine is located in an area of continuous permafrost. Lake ice thicknesses between 1.5 m and 2.5 m have been encountered in mid to late spring during geotechnical investigations and sampling campaigns. Taliks (areas of permanently unfrozen ground) are expected where water depth is greater than about 2 to 2.5 m. Based on thermal studies and measurements of

ground temperatures (Golder, 2003), the depth of permafrost at site is estimated to be in the order of 450 to 550 m, depending on proximity to lakes. The depth of the active layer is about 1 to 1.5 m and varies based on stratigraphy, presence of overburden and vegetation and proximity to lakes.

Based on ground conductivity surveys and compilation of regional data, the ground ice content is expected to be low. Locally on land, ice lenses and ice wedges are present, as indicated by ground conductivity, and by permafrost features such as frost mounds. These areas of local ground ice are generally associated with low-lying areas of poor drainage.

2.1.3.1 Impact of Climate Change on Site Conditions

Table 2-2 presents a summary of climate change predictions used on a number of northern projects that have been reported in the engineering and scientific literature. Further studies incorporating climate change references will be done using the climate change predictions from the IPCC (Intergovernmental Panel on Climate Change) RCPs (Representative Concentration Pathways) RCP6.

Table 2-2: Summary of Reported Climate Change Rates Used in Northern Projects Engineering Studies

Reference	Increase in MAAT by Year 2100 (°C)	Notes
Hayley (2004)	4.7	Used in design studies for the Inuvik Regional Health Center. Reported as increase of 0.47°C per decade.
Hayley and Cathro (1996)	5.0	Used for Raglan Dam analyses.
Diavik	3.2	Used for the Processed Kimberlite Containment Facility Design
Burn (2003)	6.0	For use in the Western Arctic for pipeline design projects. Reported as increase of 1.75°C over a 29 year period
Intergovernmental Panel on Climate Change (AR5)	See Figure 2.3	RCP 6.0 to be used as base case

As part of the Intergovernmental Panel on Climate Change's (IPCC) Fifth Assessment Report (AR5), the IPCC adopted new Representative Concentration Pathways (RCPs) to replace the previous emission scenarios of the Special Report on Emission Scenarios (SRES) (IPCC 2013). The four adopted RCPs differ from the SRES in that they represent greenhouse gas concentration trajectories, not emissions

trajectories. The four scenarios (RCP2.6, RCP4.5, RCP6.0 and RCP8.5) are named after the radiative target forcing level for 2100, which are based on the forcing of greenhouse gases and other agents and are relative to pre-industrial levels.

The climate change database for the Meadowbank and Amaruq projects was developed following the recommendations outlined on the Canadian Climate Data and Scenarios (CCDS) website, which is wholly supported by ECCC (CCDS, 2018). The website recommends the use of statistical downscaling to “downscale” a GCM’s (General Circulation Model) predictions to a specific location based on historical observations. Statistical downscaling is a two-step process consisting of i) development of statistical relationships between local climate variables (e.g., surface air temperature and precipitation) and large-scale predictors (e.g., pressure fields), and ii) application of such relationships to the output of GCM experiments to simulate local climate characteristics in the future. The Pacific Climate Impact Consortium (PCIC) at the University of Victoria provides statistically downscaled daily temperature and precipitation under the RCP2.6, RCP4.5 and RCP8.5 scenarios for all of Canada at a resolution of approximately 10 km (PCIC, 2018). The second-generation Canadian Earth System Model (CanESM2), developed by the Canadian Centre for Climate Modelling and Analysis (CCCma), was used as the predictor GCM to downscale and make climate change databases representative of site conditions.

Statistical downscaling is limited by the availability of large-scale predictors. Current CCCma CanESM2 model runs are limited temporally to 2100. In order to predict beyond 2100, the radiative forcing trend was applied to the temperature. RCP4.5 and RCP6.0 are expected to stabilize shortly after 2100, while RCP8.5 is expected to continue along the same trend until after 2200.

Temperatures are anticipated to rise at about the same rate (approximately 0.06°C/year) for RCP4.5 and RCP6.0 until approximately 2070, after which RCP4.5 estimates a reduction in the temperature increase rate. Under RCP8.5, temperatures are expected to increase at a higher rate (approximately 0.12°C/year) for the duration of the modelled period. All three scenarios predict an increase in precipitation with time of approximately 0.5 mm/year (75 mm total increase over 150 years) for RCP4.5, 0.6 mm/year (90 mm total increase over 150 years) for RCP6.0 and 0.7 mm/year (100 mm total increase over 150 years) for RCP8.5.

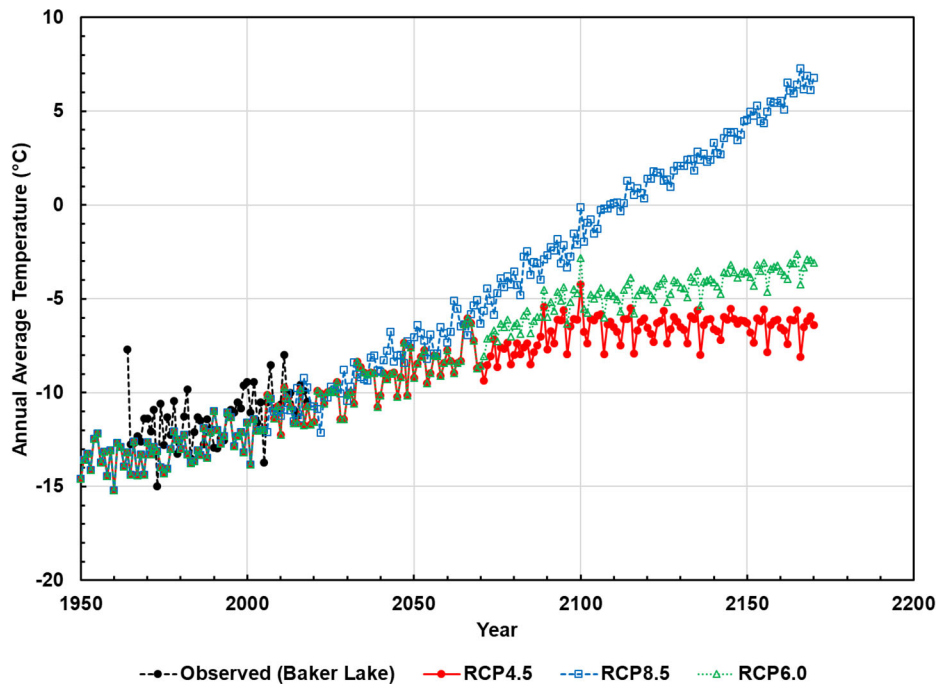


Figure 2-3: Annual average temperature estimated for the RCP4.5, RCP6.0 and RCP8.5 climate change scenarios. Observed temperature at Baker Lake is also shown.

2.2 MINING OPERATION DESCRIPTION

Mining in the Meadowbank area pits concluded in October 2019. Mining is ongoing at the Amaruq project and the ore is transported to the Meadowbank mill for processing.

The Meadowbank Gold Mine consists of several gold-bearing deposits within reasonably close proximity to one another. The three main deposits are: Vault (including Phaser and BBPhaser), Portage (South, Center and North Portage deposits), and Goose.

2.2.1 Portage Pit Area

The Portage area located between the Third Portage Lake (3PL) and Second Portage Lake (2PL) contains most of the infrastructure of the Meadowbank mine site including but not limited to the Portage Rock Storage Facility (RSF), North and South Tailings Storage Facilities (NC & SC TSF), the mill, the camp, and the Stormwater Management Pond.

The South Portage deposit is located on a peninsula and extends northward under Second Portage Lake (2PL) and southward under Third Portage Lake (3PL). The North Portage deposit is located on the northern shore of 2PL. The South, Center and North Portage deposits are mined as a single pit, termed

Mining in the Portage Pit area concluded in 2019. Since then, there is no more mining activity at Meadowbank.

[illegible]

Figure 2-4: Portage Pit and Tailings Storage Facility Infrastructures

2.2.2 Goose Pit Area

The Goose deposit lies approximately 1 km to the south of the Portage deposit, and beneath 3PL. The pit is isolated from the Second Portage Lake and the Third Portage Lake by the Bay-Goose Dike and the South Camp Dike constructed in 2009-2010. Mining in Goose pit began in 2012 and was completed in April 2015. The northern part of the pit was historically used for pit infilling. The Goose Pit area and surrounding infrastructure are illustrated in Figure 2-5.

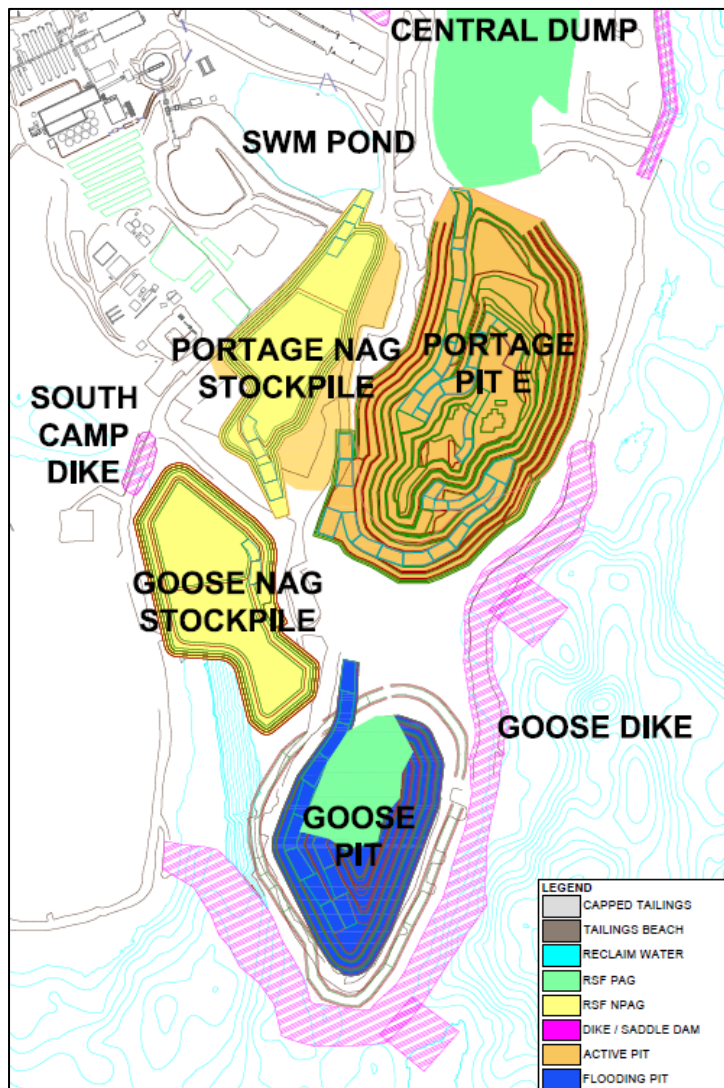


Figure 2-5: Goose Pit Area Map

2.2.3 Vault Pit Area

The infrastructure of the Vault Pit area includes the Vault RSF, ore and marginal pads, Vault Dike, Vault Pit, Phaser Pit, BB Phaser Pit, Vault attenuation pond, and emergency shelter. Figure 2-6 illustrates the Vault Pit area and surrounding infrastructure.

The Vault deposit is located adjacent to Vault Lake, approximately 6 km north of the Portage deposits. The deposit is isolated from the Wally Lake by the Vault Dike built in 2013.

The Vault Pit area mining activity was completed in 2019 with the conclusion of Vault Pit in March 2019 and BB Phaser Pit in June 2019. Phaser Pit mining activities were completed in October 2018.

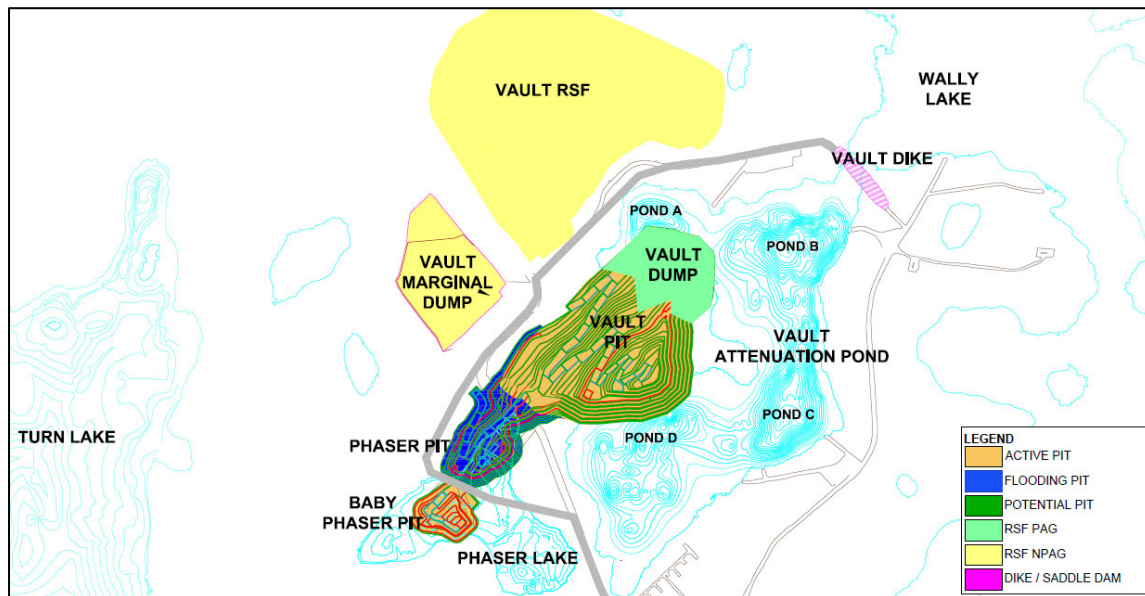


Figure 2-6: Vault Pit Area Map

2.3 TAILINGS STORAGE FACILITY DESCRIPTION

The Tailings Storage Facility (TSF) is located with the Portage Pit Area and is comprised of the South Cell and the North Cell. These cells are delimited by tailings retaining dikes that are progressively built as capacity is required. The configuration of the TSF is presented on Figure 2-4. A summary of the TSF infrastructure is presented in *Table 2-3*.

Stormwater Dike, constructed in 2009-2010, is an internal dike (El. 150m) that divides the TSF into the North and South Cell.

The peripheral structures of the North Cell are SD1, SD2, RF1 and RF2 built to El 150 m from 2009 to 2010. In 2018, an internal structure was built in the Northern part of the North Cell over the existing tailings (variable El. From 152 to 154 m) to increase the tailings storage capacity. In April 2019, a permeable berm was built in the North Cell to secure the reclaim pond from tailings entering.

The peripheral structures of the South Cell are SD3, SD4, SD5 and Central Dike built to El. 145 m from 2012 to 2018.

A permeable berm was built in the South Cell in 2017, to prevent tailings from reaching the reclaim pump area. In February 2019 an additional permeable berm was built within the South Cell TSF to maintain reclaim capability.

The diversion ditches (East and West), located around the perimeter of the North Cell TSF and the Portage RSF, are designed to collect the non-contact water runoff from the surrounding watershed.

2.3.1 In-Pit Tailings Storage Description

In-Pit tailings storage will occur in the mined-out areas of Goose Pit, Portage Pit A and Portage Pit E.

Table 2-3: TSF Infrastructure Description

Containment Area	Structure	Construction date	Purpose
North Cell	Saddle Dam 1	Built to el. 141m - 2009 Raised to el. 150m - 2010	Peripheral Dike Tailings Retention
	Saddle Dam 2	Built to el. 150m - 2011	Peripheral Dike Tailings Retention
	Rockfill road structure 1 (RF1)	Built to el. 150m – 2009 Till Plug Constructed in 2013	Access Road Tailings Retention
	Rockfill road structure 2 (RF2)	Built to el. 150m - 2009	Access Road Tailings Retention
	Stormwater Dike	Built to el. 140m - 2009 Raised to el. 148m – 2010 Raised to el. 150m - 2013	Divider Dike Tailings Retention
	North Cell Internal Structure	Built to el. variable 152-154m - 2018	Internal Structure Tailings Retention
	North Cell Capping	2015 to 2019	Progressive closure
	Permeable Berm	Built to el.148.5m - 2019	Water management
South Cell	Saddle Dam 3	Built to el. 140m - 2015 Raised to el. 143m - 2016 Raised to el. 145m – 2017-2018	Peripheral Dike Tailings Retention
	Saddle Dam 4	Built to el. 140m - 2015 Raised to el. 143m - 2016 Raised to el. 145m - 2017	Peripheral Dike Tailings Retention
	Saddle Dam 5	Built to el. 143m - 2016 Raised to el. 145m - 2017	Peripheral Dike Tailings Retention
	Central Dike	Built to el. 110m - 2012 Raised to el. 115m - 2013 Raised to el. 132m - 2014 Raised to el. 143m - 2016 Raised to el. 145m - 2017-2018	Peripheral Dike Tailings Retention
	Permeable Berm 1	Built to el. 137.25 - 2017	Water management
	Permeable Berm 2	Built to el. 141.5 - 2019	Water management

In-pit deposition	Goose Pit	Commissioned in July 2019	Tailings Retention
	Pit E	Commissioned in July 2019	Tailings Retention
	Pit A	Commissioned in July 2019	Water management (reclaim water) and later Tailings Retention

3 MINE DEVELOPMENT PLAN

3.1 MINE WASTE PRODUCTION SEQUENCE

The current mine plan has no Meadowbank mining planned since mining operations at Meadowbank (Portage, Goose, Vault, Phaser and BBPhaser pits) are complete.

The material balances from 2009 to 2022 is presented in Appendix A. This balance indicates the distribution of the categories of materials mined and their destination. Table M in Appendix A compares the amount of waste mined to the FEIS prediction. It is to be noted that the difference in PAG and NPAG mined compared to the FEIS does not impact the management strategy and the closure concept. Please note that since mining operations at Meadowbank are completed no material will be produced other than tailings.

The proposed usage or destination of the mine waste materials is presented in Table 3.1. Table 3.2 indicates the main areas that will require NPAG/NML waste rock for closure and reclamation.

Based on current material balance calculations, it seems that sufficient quantities of suitable rock fill materials will be available for capping activities and closure/reclamation projects. The NAG material for closure activity is planned to be source from the Goose and Portage NAG stockpile. This information will need to be confirmed by updating the quantity of NAG material stored in the NAG stockpile.

Table 3-1: Summary of Mine Waste Tonnage and Destination

Mine Waste Stream	Estimated Quantities	Waste Destination
Total Mined Waste Material	235.7 Mt	Portage and Vault WRSF
		Construction material
		Pit Backfill material
Total Overburden	12.5 Mt	Construction material
		Co-disposed with waste rock in WRSF
Total PAG	115.2 Mt	Vault and Phaser Pit Backfill Material (95% NAG, 5% PAG), Portage Pit Backfill Material (100% PAG)
		Portage WRSF (19% NAG, 81% PAG) and Vault WRSF (95% NAG, 5% PAG)
Total NPAG	108.0 Mt	Vault and Phaser Pit Backfill Material (95% NAG, 5% PAG)
		Vault WRSF (95% NAG, 5% PAG)
		Construction material (100% NAG)
		Portage WRSF Cover (100% NAG)
		Goose and Portage NAG stockpile (Available for closure and site reclamation, 100% NAG)

Table 3-2: Projected Use of NPAG/NML Waste Rock Tonnage for Closure and Reclamation

Area	Activity	Volume Required of NAG /NML waste (tonnes)
Portage WRSF	Completion of cover landform	1,042,170
SC / NC	Completion of tailings landform	12,050,010
Pit	Placement of cover over pit tailings (if required based on feasibility evaluation)	756,000
Total		13,848,180

4 OVERBURDEN MANAGEMENT

4.1 LAKEBED SEDIMENTS

The lakebed sediment consists of soft, fine-grained sedimentary deposits that can be found at the bottom of lakes.

The thickness of lake bottom sediments at Meadowbank is variable and can range from a few centimeters up to 10 meters and more as suggested by geophysical surveys and information obtained from various drilling programs and construction activities.

Lakebed sediments were excavated and managed during the construction of Stormwater Dike, Central Dike and of the dewatering dikes as well as during pre-stripping of the Pits.

The strategy to manage lakebed sediment removed during construction or pre-stripping was to place it in either the Portage or Vault RSF.

4.2 TILL

The remainder of the overburden materials consists of till materials (mix of silt, sand, gravel, cobbles, and boulders) with alluvial deposits of silt and sand intermixed. The till material is generally described as a silty sand/gravel. It contains cobble and boulder-sized particles with an average of 30 to 40% silt particles. The average till thicknesses throughout the Mine area varies based on location and may range from zero to upwards of 18 m.

The management strategy for till was to stockpile a part of it to be used for construction of the tailings management infrastructure as required. The remaining quantity of till was placed within the RSFs and mixed with waste rock.

5 WASTE ROCK MANAGEMENT

The strategy to manage waste rock from the open pit mines, not used for site development purposes, is to store it within the Waste Rock Storage Facilities (RSFs).

Due to the distance between the Portage mining area and the Vault mining area, two separate waste rock storage facilities are required. Waste rock from the Portage and Goose Pits is stored in a storage facility located near these pits (Portage RSF or Goose Pit dump), while waste rock from the Vault, Phaser and BBPhaser Pits is stored in a separate storage facility adjacent to the Vault Pit (Vault RSF). Waste rock is also stored within mined out areas of pits (pit-infilling).

5.1 WASTE ROCK MANAGEMENT STRATEGY

Waste rock is managed within the RSFs as well as within the mined-out areas of Portage, Goose, Vault, and Phaser Pits. The waste rock is classified with testing as non-acid generating (NAG) or potentially acid generating (PAG). The management strategy for NAG and PAG material is different.

Placement of waste rock within the Portage RSF commenced closest to the Portage Pit and has progressed westward over the entire footprint, then upward to further benches during the development of the mine. In 2012, an extension of the Portage WRSF was done to store NAG material within a temporary area (Figure 5-1).

Placement of waste rock within the Vault RSF commenced closest to the Vault Pit and proceeded in a northward direction, rising upward as pit development progressed.

PAG rockfill is managed within the Portage RSF, Vault RSF, Portage Pit infill, and Vault and Phaser Pit infill. The PAG rockfill within the Portage RSF is placed outside of the capping area (which consists of a thickness of 4 m at surface). At the Vault RSF the majority of the rockfill is NAG with the PAG placed within the middle area.

NAG rockfill is managed as construction material, capping material for the TSF, Goose Pit infill, Vault infill, Phaser infill, and within the Portage and Vault RSF. At the Portage RSF the NAG is stored within a temporary NAG stockpile area and is also used as capping for the PAG material. In the Vault RSF, NAG material consists of the majority of the RSF.

5.2 WASTE ROCK STORAGE FACILITY CHARACTERISTICS

Table 5-1 summarizes the overall (final) physical dimensions and aspects of the Portage and Vault RSFs.

Table 5-1: Details of Rock Storage Facilities

Descriptors	Portage Rock Storage Facility	Vault Rock Storage Facility
Storage volume	39.3 Mm ³	29.1 Mm ³
Final crest elevation	254 m	246 m
Final height	100 m	80 m
Maximum elevation of adjacent topography	192 m	190 m
Footprint area	80.8 ha	61.0 ha

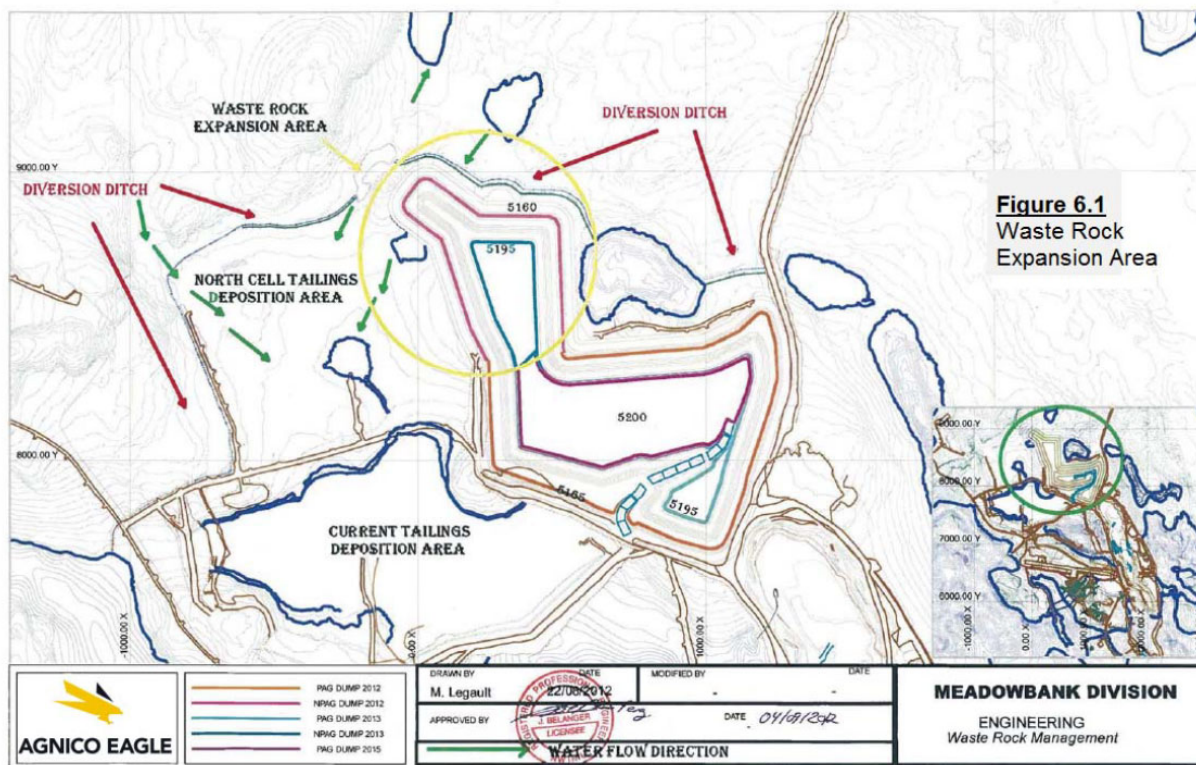


Figure 5-1: Waste Rock Expansion Area (Temporary NAG Storage Area)

6 TAILINGS MANAGEMENT

Tailings are the material by-product of the gold recovery process produced by the process plant. Tailings are pumped as a slurry from the process plant to the Tailings Storage Facility or to the mined-out area of Goose and Portage Pits.

The tailings storage facility (TSF) is a permanent storage facility for tailings produced during the operation of the mine. It is located north of the Process Plant Site within the dewatered portion of the northwestern arm of Second Portage Lake.

Tailings containment in the TSF is achieved by the construction of a series of dikes. The structures of the TSF are raised as additional tailings capacity is required. The maximum allowed elevation of the North Cell and South Cell peripheral structures is El. 150 masl, while the maximum allowed elevation of the North Cell Internal Structure is El. 154 m. Refer to Section 2.3 for a description of the tailings containment infrastructures and their current elevation.

Tailings containment through in-pit deposition is achieved by depositing tailings in the mined-out areas of Goose Pit and Portage Pit.

6.1 TAILINGS MANAGEMENT STRATEGY

Tailings deposition is done using end of pipe deposition with one active point at a time. The deposition point location and duration are determined from the tailings deposition plan. Changing between deposition points on a given line consist of stopping the flow of tailings in the line, redirecting it through a by-pass, flushing the line, relocating the deposition point pipe, and then switching tailings from the by-pass to the newly installed deposition line.

6.1.1 TSF Tailings Management Strategy

The TSF was designed in two cells (North and South) in order to allow tailings management in smaller areas with shorter beach lengths, reducing the amount of water that is trapped and permanently stored as ice, which would result in losing TSF capacity. Operation in cells also allows progressive closure, cover trials, and cover construction.

Due to the arid climate and permafrost environment, tailings in the TSF are disposed in a manner promoting freezeback. Given the length of time that water at the site is ice covered, sub aqueous disposal is preferred. It is anticipated that the tailings will eventually become encapsulated by permafrost; thus, limiting oxygen diffusion and water infiltration into the tailings, seepage from the tailings, and the generation of acid mine drainage. Refer to the water management plan for information on how water is managed within the TSF.

When discharging tailings in the TSF, planning is aligned with the tailings management strategy and considers the following aspects:

- The deposition sequence informs the dike construction activity and ensures enough capacity to store the life of mine tailings while maintaining adequate freeboard (2.0m for water and 0.5m for tailings);
- The deposition sequence maintains a reclaim pond with sufficient depth for efficient operation of the reclaim pumping system while minimizing pond volume as TSF operation best practices;
- The deposition sequence maintains beaches on the upstream faces of perimeter dikes;
- The deposition sequence promotes sub-aqueous deposition in winter to limit ice entrapment;
- The deposition sequence promotes freezing of the tailings during the operating period and;
- The deposition sequence maximizes certain areas of the TSF earlier in order to promote rockfill capping during operation.

6.1.2 In-Pit Tailings Management Strategy

In-pit tailings disposal will occur in Goose Pit, Pit E, and Pit A. The deposition strategy is to start in-pit tailings deposition in Goose Pit, then in Pit E and then in Pit A. In-pit tailings deposition commenced in Goose Pit in July 2019.

In-pit tailings disposal was originally planned to occur using crest and ramp deposition points, with the long-term strategy to use crest deposition in summer, and discharge along the pit ramp in winter, in order to facilitate water transfers. Since 2020, all deposition occurred from the crest and summer and winter discharge was the same.

The in-pit tailings deposition strategy will respect these freeboard criteria:

- 8 m tailings freeboard with Third Portage Lake water elevation (maximum tailings El. 125.6masl). This freeboard is required to ensure a minimum water cover of 8 m at closure;
- Portage Pit A and Pit E water elevation to maintain a 2 m freeboard with the lowest point of the West Road (which is planned to be raised as required);
- Goose Pit tailings freeboard to respect a highest elevation of 120masl, to ensure a 13.6m freeboard near Bay Goose Dike.

During in-pit tailings deposition, reclaim water is pumped to the mill from either Portage Pit A or Pit E. Reclaim water is pumped from a location that allows low levels of Total Suspended Solids

(TSS) to be returned to the mill. The volume that is reclaimed will be adjusted to ensure a minimum water cover of 3 m during in-pit deposition.

In addition, to ensure that the water level in Goose Pit remains below 128 masl during operation and to provide enough volume for the reclaim in Pit A, water from Goose Pit is transferred to Portage Pit A or Pit E as required. Water transfer from Goose Pit only occurs during the summer period. Switches of the pit for tailings deposition are scheduled as needed during planned extended mill shutdowns, generally in March or September.

The tailings deposition plan is aligned with the tailings management strategy.

6.2 TAILINGS DEPOSITION

Table 6-1 presents the history of tailings deposition in the TSF and pits. Deposition was done according to the deposition plan, which considers various factors such as construction sequence, remaining capacity, and limiting ice entrapment during winter deposition.

In 2021 tailings deposition occurred in the North Cell from July 8th to August 19th and in Pit E for the remainder of the year. Tailings deposition in the North Cell was done to optimize the landform for water management.

Table 6-1: Deposition Location (Realized)

Date	Deposition location	Tailings deposited (dried tonnes)
February 2010 to November 2014	North Cell	16.0Mt
November 2014 to July 2015	South Cell	2.7Mt
July 2015 to October 2015	North Cell	1.0Mt
October 2015 to August 2018	South Cell	10.8Mt
August 2018 to October 2018	North Cell	0.5Mt
October 2018 to April 2019	South Cell	1.4Mt
April 2019 to July 2019	North Cell	0.6Mt
July 2019 to December 2019	Goose Pit	1.4Mt
January 2020 to August 2020	Goose Pit	1.4 Mt
August 2020 to July 2021	Pit E	3.1 Mt
July 2021 to August 2021	North Cell	0.4 Mt
August 2021 to December 2021	Pit E	1.2 Mt

6.2.1 Parameter Analysis

Bathymetric survey is conducted every year in areas where tailings deposition occurred since the last bathymetry. Parameter analysis is performed using this data as required to fine tune the deposition model. Results of historical parameter analysis of the TSF and IPD are presented in **Table 6-2** and **Table 6-3**.

Table 6-2: Yearly Tailings Deposition Parameter Evolution – TSF

	Tailings Dry Density (t/m ³)	Sub-aerial beaches (%)	Sub-Aqueous beaches (%)	Ice entrapment (%)
2014 (North Cell and South Cell)	1.28	0.45	4.00	60%
2015 (South Cell)	1.45	1.10	3.60	36%

2016 (South Cell)	1.48	0.88	3.03	39%
2017 (South Cell)	1.30	0.73	2.95	38%
2018 (South Cell)	1.26	0.58	2.36	61%
2018 (North Cell)	1.28	0.45	2.36	61%

Note: Yearly averages are presented

Table 6-3: Yearly Tailings Deposition Parameter Evolution – IPD

	Tailings Dry Density (t/m³)	Sub-Aqueous Beaches - First 100m (%)	Sub-Aqueous Beaches – Post 100m (%)
2019 (Goose Pit)	1.45	10.0	1.00
2020 (Goose Pit)	1.8	10.0	1.00
2021 (Pit E)	1.50	4.7	10.36

Note: Yearly averages are presented

6.3 TAILINGS DEPOSITION PLAN – 2022-2026

An updated version of the tailings deposition plan from January 2022 until the end of milling is presented in Appendix B. This updated tailings deposition plan considers up to date tailings parameters. The water management strategy related to this deposition plan is also presented in Appendix B.

As mill processing rates and tailings characteristics may fluctuate over the life of the mine, the tailings deposition plan will continue to evolve based on changes in design parameters including mill process rates, tailings beach slopes, waste rock porosity, tailings specific gravity, and tailings in-situ densities. These parameters are re-evaluated every time the deposition plan is updated. **Appendix B** presents the input parameters that were used to update the tailings deposition plan.

The key input parameters that impact the performance of the tailings deposition are the following:

- Tonnage profile;
- Tailings beach slope;
- In-situ dry density;
- Tailings specific gravity
- Waste rock porosity.

Table 6-4 presents a summary of the deposition strategy from 2022 to 2026 based on the output of the deposition modelling. The strategy of this tailings deposition plan was to minimize freshwater consumption and ensure operational flexibility to react to potential new challenges brought by the in-pit deposition.

The deposition plan demonstrates the remaining capacity after 2026 for additional in-pit deposition.

Table 6-4: Deposition Plan – Summary

Date	Discharge Location	Dry Tonnes Deposited	Comments
January 2022 - December 2026	Pit E	19.2 Mt	<ul style="list-style-type: none"> • Reclaim water from Pit E (Pit A is the backup reclaim system) • Transfer water from Pit E to Pit A • Transfer water from Goose Pit as required for elevation control

6.4 MONITORING OF TAILINGS SEEPAGE

Following dewatering of 2PL Arm and during investigations and construction of the TSF perimeter dikes, several investigative procedures were used to identify the location and hydraulic properties of faults that are inferred to be present beneath the North Arm of 2PL including mapping of exposed bedrock and packer testing in boreholes.

The results of the investigations were used to locate monitoring wells and thermistors that are installed within the dikes, and between the Central Dike and crest of the Portage Pit. Thermal data is monitored to evaluate seepage from the TSF and freezeback of the TSF, and of the Central Dike, Saddle Dam and Rockfill perimeter containment foundations. More information regarding thermal data and monitoring is in the Thermal Monitoring Plan and the Thermal Monitoring Report.

- If monitoring indicates flow rates and water qualities of concern, then mitigation measures would be undertaken. Collection of any seep water will be required for pumping it back to the TSF. The potential mitigation action would be dependent on observed flow rates and water quality data;
- If, during monitoring, the freezeback of the dike and tailings deposit is found to be occurring at a rate less than predicted, then mitigation methods may be considered.

Refer to the Water Management Plan and Annual Report for details on the Central Dike seepage and to the Tailings Storage Facilities OMS Manual for seepage monitoring and mitigation actions.

6.5 MONITORING OF TAILINGS DUST

Since tailings deposition has been switched from the South Cell and North Cell to the Pits, the tailings surface has been progressively drying out, especially in the North Cell where less water is retained. As a result, the surface is more prone to erosion by the wind in the absence of continuous deposition. In October 2020, high winds combined with the dry tailings surface generated a significant dust event. A communication was sent to the DFO and mitigation measures were successfully implemented in 2021 to prevent further dust generation from wind erosion.

7 CONTROL STRATEGIES FOR ACID ROCK DRAINAGE – COVER DESIGN

Some rock lithologies from the Meadowbank mining activity are potentially acid generating (PAG) which can raise the concern of generating acid drainage. This section describes the control strategy for the concept to limit acid rock drainage from the tailings and waste rock at Meadowbank as presented in the approved Interim Closure and Reclamation Plan (ICRP).

During selection of the acid rock drainage control strategies for the disposal of the mine waste at the Meadowbank Gold Mine, consideration was given to control strategies that are effective in Arctic regions.

Common control strategies for the prevention or reduction of acid mine drainage in cold regions are:

1. Control of acid generating reactions;
2. Control of migration of contaminants; and
3. Collection and treatment.

In assessing the overall control strategies for the Meadowbank Gold Mine, emphasis has been placed on methods that satisfy (1) and (2), which then has an impact on (3) by potentially reducing the requirements for these activities. Table 7-1 presents various acid mine drainage control strategies for Arctic conditions that can be found in the literature.

Table 7-1: Acid Mine Drainage Control Strategies of the Arctic

Strategy	Tailings	Waste Rock
Freeze Controlled	Total or perimeter freezing options can be considered. Can freeze up to 15 m annually if freezing in thin layers. Freezing rate decreased proportionately with depth. Process chemicals could cause high unfrozen water content.	Requires considerable volumes of non-acid waste rock for insulation protection. Better understanding of air and water transport through waste rock required for reliable design.
Climate Controlled	May not be a reliable strategy for saturated tailings.	Requires control of convective airflow through waste rock, infiltration control with modest measures and temperature controls. Better understanding of waste rock air, water, and heat transport for reliable design.
Engineered Cover	Special consideration for freeze-thaw effects. Availability and cost of cover materials are major impediments.	
Subaqueous Disposal	Special considerations for winter ice conditions and pipeline freeze-up.	Very difficult to dispose of waste rock beneath winter ice.
Collection and Treatment	Costly to maintain at remote locations Long term maintenance cost.	
Segregation and Blending	Tailings are normally geochemically homogeneous.	May be very effective. Research and development on-going.

Reference: (MEND 1.61.2, 1996)

The concept presented in the ICRP for acid rock drainage control strategy for in-pit deposition is subaqueous disposal.

The concept presented in the ICRP for the acid rock drainage control strategies at Meadowbank for the TSF and RSF is freeze control and climate control strategies. These strategies involve placing a sufficiently thick cover of non-potential acid generating (NAG) waste rock over the PAG material to provide insulation protection so that the majority of the PAG material stays frozen. The Vault RSF capping is complete. The TSF and RSF cover thickness design will be different as the thermal phenomena within each facility will be different. For example, the tailings are much finer than the waste rock, which will impact the convective airflow model due to lower air conductivity and higher water content.

Freeze control strategies rely on the immobilization of pore fluids to control acid mine drainage reactions, and the potential migration of contaminated pore water outside of the storage facility.

The climate conditions at the Meadowbank Gold Mine site are suitable to freeze control strategies. In addition to immobilization of pore fluids, permafrost can reduce the hydraulic conductivity of materials by several orders of magnitude.

Climate control strategies rely on cold temperatures to reduce the rate at which oxidation occurs. The low net precipitation in permafrost regions limits infiltration of water into waste rock and tailings disposal areas. Consequently, the climate of the Meadowbank Gold Mine area will act as a natural control to reduce the production of acid mine drainage. Climate control strategies are best applied to materials placed at a low moisture content such as waste rock to reduce the need for additional controls on seepage and infiltration.

Research activities have been undertaken since 2014 in collaboration with the Research Institute Mines and Environment (RIME) to optimize the control strategies to be used in Meadowbank for the RSF's and the TSF's. The design of the cover of the WRSF is in progress and will incorporate the results from this research. The final design will be presented in the Final Closure and Reclamation Plan (FCRP).

Thermistors are installed in the Portage RSF and TSF North Cell to monitor thermal behavior as an adaptive management technique and to support the design of the WRSF landform cover. More information regarding thermal data and monitoring is presented in the Thermal Monitoring Plan and the Thermal Monitoring Report.

7.1 TSF COVER DESIGN

Capping trials and test pads have been constructed on the TSF North Cell in 2014 and 2015, in collaboration with the Research Institute on Mines and the Environment (RIME) to gather data that will help determine the most appropriate design for the site conditions. The design of the cover for the North Cell and South Cell has been initiated in 2015 and 2016. The design is still in progress and the final design will be presented in the Final Closure and Reclamation Plan.

The current design criteria for the cover system design are:

- The tailings material placed within the North Cell should be entirely frozen after a period of 10 years following completion of the capping (frozen defined as tailings temperature $<0^{\circ}\text{C}$).
- The freezing front should continue at depth into the lakebed sediments and the bedrock underlying the North Cell, thus eliminating the talik currently in place. The time required for this phenomenon to take place will be determined from modelling and is to be corroborated by monitoring of ground temperatures following closure.

- The tailings are to remain frozen for a period of over 150 years following closure, taking into account the agreed-upon climate change scenario. This will be based on modelling and monitoring of ground temperatures following closure of the facility.
- Ground temperature monitoring should be conducted for a minimum of ten years following closure of the TSF and data compared to the modelled scenario. Model parameters are to be adjusted based on monitoring data and then the future ground temperature predictions are to be refined.
- For 90% of the TSF surface area, the active layer shall remain within the constructed NAG cover system and the underlying tailings material shall remain frozen for a warm year event with a return period of 1 in 100 years, accounting for the climate change scenario.
- In areas where the active layer extends into the tailings material, the thawed layer should be limited to the upper 30 cm of the tailings mass and saturation of the tailings should remain above 85% to limit oxidation of the tailings.
- As an additional method to reduce tailings reactivity, the degree of saturation within the tailings mass should remain above 85%. This will reduce the tailings reactivity should part of the upper region of the tailings mass thaw during a warm year event.

Conceptual cover system designs previously modelled (Golder, 2008) and presented in the interim closure plan (Golder, 2014) rely on aggradation of the tailings material into the surrounding permafrost to limit the production of Acid Mine Drainage (AMD) and the movement of contaminants through surface water and groundwater. The construction of a cover system consisting of non-acid generating granular material (NAG) over the tailings material ensures that the active layer (material going through freeze-thaw cycles, overlying permafrost) remains within non-reactive material. The objectives of the cover system are to maintain the tailings material below 0°C under most conditions and to maintain saturation above 85%.

The concept for the engineered cover system is a layer of compacted NAG waste rock (ultramafic) with a minimum thickness of 2.0 m. The concept was developed as a result of soil-plant-atmospheric (S-P-A) modelling, as well as thermal and seepage modelling. Visual observations in the field show that the ultramafic material is heterogeneous with coarser and finer zones so it will be possible that some part of the capping is more insulative than others. As the capping is done in winter over frozen tailings using such a material will have an advantage as it will allow to better preserve the freezing condition of the tailings while limiting water infiltration in the cover.

Thermal modelling shows that the tailings material beneath the minimum 2.0 m thick cover will remain frozen for all years (excluding the warmest years) from the 100-year database, accounting for climate change. The unfrozen tailings are segregated in the upper 0.5 m of the TSF and remain above 85% saturation, thus reducing the risk of oxidation until the material freezes back into the permafrost over time.

The TSF closure design will also include a landform that promotes water shedding from all surfaces covered. TSF landform material placement will be achieved by backfilling using the same material as the cover. With this strategy, the current conceptual closure landform plan indicates that the cover thickness over most of the landform will generally be significantly thicker than 2 m reaching up to 8.0 m in certain portions due to the tailings topography.

Additional Engineering work and modelling will be required to prepare the final cover design that will be submitted in the FCRP. Final cover details for the TSF will be subject to modification depending on the results obtained from the site trials as well as from data provided from Monitoring Program.

7.2 IN-PIT COVER DESIGN

An 8 m water cover will be maintained at closure for in-pit tailings. This will be achieved by maintaining an 8 m water freeboard from the highest tailings point to normal 3PL elevation (133.6masl) and by performing pit flooding at closure. This water cover depth will ensure that the tailings will not be re-suspended due to wave effect and ice formation, and will limit access of aquatic life to it.

7.3 RSF COVER DESIGN

For the Portage waste rock storage, the current concept presented in the ICRP considers a cover of NAG rock placed over the PAG material present in the waste rock piles. The majority of the Portage RSF was covered with NAG material during operations. For Vault, the waste rock is mainly NAG, and the PAG waste rock was encapsulated in the center of the pile during operations.

Based on the results of thermal modelling done so far, it is expected that the material within the RSFs will be mainly frozen after two years of placement. The use of coarse rockfill material within the waste dump will allow the development of convective cooling during winter, and insulation through trapped air within voids during summer. Given the high evaporation rate and low annual average precipitation at the site, the water infiltration into the pile is expected to be low.

The RSF cover concept consists of a 4 m thick layer of non-acid generating (NAG) rockfill to contain the active layer within the NAG cover. The depth of cover was selected based on thermal modelling and instrumentation to assess the probable thickness of the active layer at closure including climate change. The NAG cover will not be compacted during construction, but this is considered in the thermal model and in the thickness of the cover.

Additional effort will be required to verify the performance of the cover system against the design intent and inform on the final cover design. Final cover details for the RSF will be subject to modification depending on the results obtained the Thermal Monitoring Program.

8 MONITORING AND CLOSURE

Mine closure and reclamation will utilize accepted management practices and appropriate mine closure techniques that comply with accepted protocols and standards. Closure will be based on project design and operation to minimize the area of surface disturbance, stabilize disturbed land surfaces and permafrost against erosion, and return the land to post-mining uses for traditional pursuits (MMC, 2007a). An updated Interim Closure and Reclamation Plan was prepared by Golder in March 2020. The document was included as part of AEM's 2019 Annual Report.

All infrastructure associated with waste management facilities will be re-contoured and/or surface treated according to site specific conditions to minimize windblown dust and erosion from surface runoff, avoid acid rock drainage and to enhance the re-establishment of natural vegetation and wildlife habitat. A Final Reclamation and Closure Plan will be issued in accordance with the Water License.

The post-closure general concept for the Meadowbank site is illustrated in Figure 8-1. Mine waste rock storage for Portage and Vault and the North Cell TSF will be progressively closed during and after mine operations.

8.1 TSF RECLAMATION

The ultimate goals for reclamation of the TSF are to mitigate long-term environmental effects to the aquatic receiving environment and to establish a landform similar to that of the natural surrounding area.

To achieve the goals and criteria for the reclaimed TSF, the final design will consist of a landform that promotes water shedding from all surfaces covered by an engineered cover system. During the post-closure period, the tailings are predicted to freeze with time, resulting in permafrost encapsulation.

The final landform will consist of two watersheds in the North Cell, each one having its own outlet, and one landform for the South Cell. Around half of the North Cell area discharges through a first outlet in a sump and ditch at the North leading to 3PL. The second outlet discharges via a spillway to the lower South Cell cover. From this point, this water is mixed with the South Cell watershed going through a sump and ditch system in such a way that water is drained from both covers, in line with closure requirements. Design objectives are to minimize cover material volumes and tailings excavation by taking advantage of the tailings surface and balancing the required excavation and cover system material volumes. Several scenarios were prepared on both the North Cell and South Cell to minimize rockfill volumes and the most optimal ones were chosen.

Water is moved off the cover using a surface water management system consisting of grading the plateau areas towards engineered surface runoff drainage channels. The runoff drains have a minimum slope to ensure drainage.

The surface water management plan for the reclaimed TSF is to minimize erosion, thus reducing suspended sediment loading to the receiving environment, and to safely convey runoff water in the event of a storm event coupled with spring snowmelt. To achieve this, the surface water management system will be constructed using riprap-lined drainage channels and riprap-lined aprons at the outlet of each catchment. It should be noted that run off water will be directed to the South Cell or to the Portage Pit until it meets criteria for direct discharge to Third Portage Lake. This is discussed in the Water Management Plan.

At closure water will be removed from the South Cell and North Cell of the TSF. Once the North Cell and South Cell TSF reclaim ponds will be dewatered, the migration of seep water into the talik beneath the North Arm of Second Portage Lake can only occur by diffusion. The rate of advance of the freezing front into the talik beneath the 2PL is expected to exceed the rate of advance of diffusive transport.

North Cell progressive capping occurred from winter of 2015 to 2019 using mainly ultramafic rockfill from the Portage Pit operation. No capping was done since 2019. Capping will be completed once the operation of the North and South Cell is completed. AEM is evaluating on a regular basis favorable locations for progressive capping.

8.2 IN-PIT CLOSURE

The closure strategy for in-pit tailings deposition areas consists of pit flooding and dike breaching once the water quality is met. Details of this strategy are presented in the water management plan.

8.2.1 Pore Water Quality

The Pore Water Quality Monitoring Program will serve to characterize and monitor the chemical composition of existing IPD tailings pore water. This will be used to monitor, update, and calibrate, if required, hydrogeological and contaminant transport models previously developed. Samples are collected at the mill on a monthly basis during the first year of operation. Once Goose Pit reaches full storage capacity, pore water quality will be collected directly from the in-pit tailings, once safe to do so. For more details, refer to the Pore Water Quality Monitoring Program.

8.3 RSF CLOSURE

For the Waste Rock Storage Facility, the current ICRP consists of the placement of a 4m cover of NAG rock placed over the PAG material. This capping was continually built around the perimeter as parts of the RSF reached their limits. To date, approximately 90% of the Portage RSF has been

covered. The final capping will be completed at closure. Based on the results of the planned thermal monitoring and additional thermal modeling it is possible that additional measures will be required to achieve performance of the cover to meet design intent. Details of the Portage RSF closure will be presented in the Final Closure and Reclamation Plan.

For Vault, the waste rock stored is mainly NAG, and the PAG waste rock is encapsulated in the center of the pile during operations resulting in a thickness of NAG larger than 4 m acting as a cover.

The surfaces of the Portage and Vault RSFs will be contoured where required to direct drainage respectively to the TSF (see **Figure 8-2Error! Reference source not found.**) and towards Vault Pit (see **Figure 8-3**). Note that Section A in **Figure 8-2Error! Reference source not found.** is conceptual and does not represent the completed design work of the TSF North Cell cover. The runoff water from the Vault and Portage RSFs will be monitored at closure.

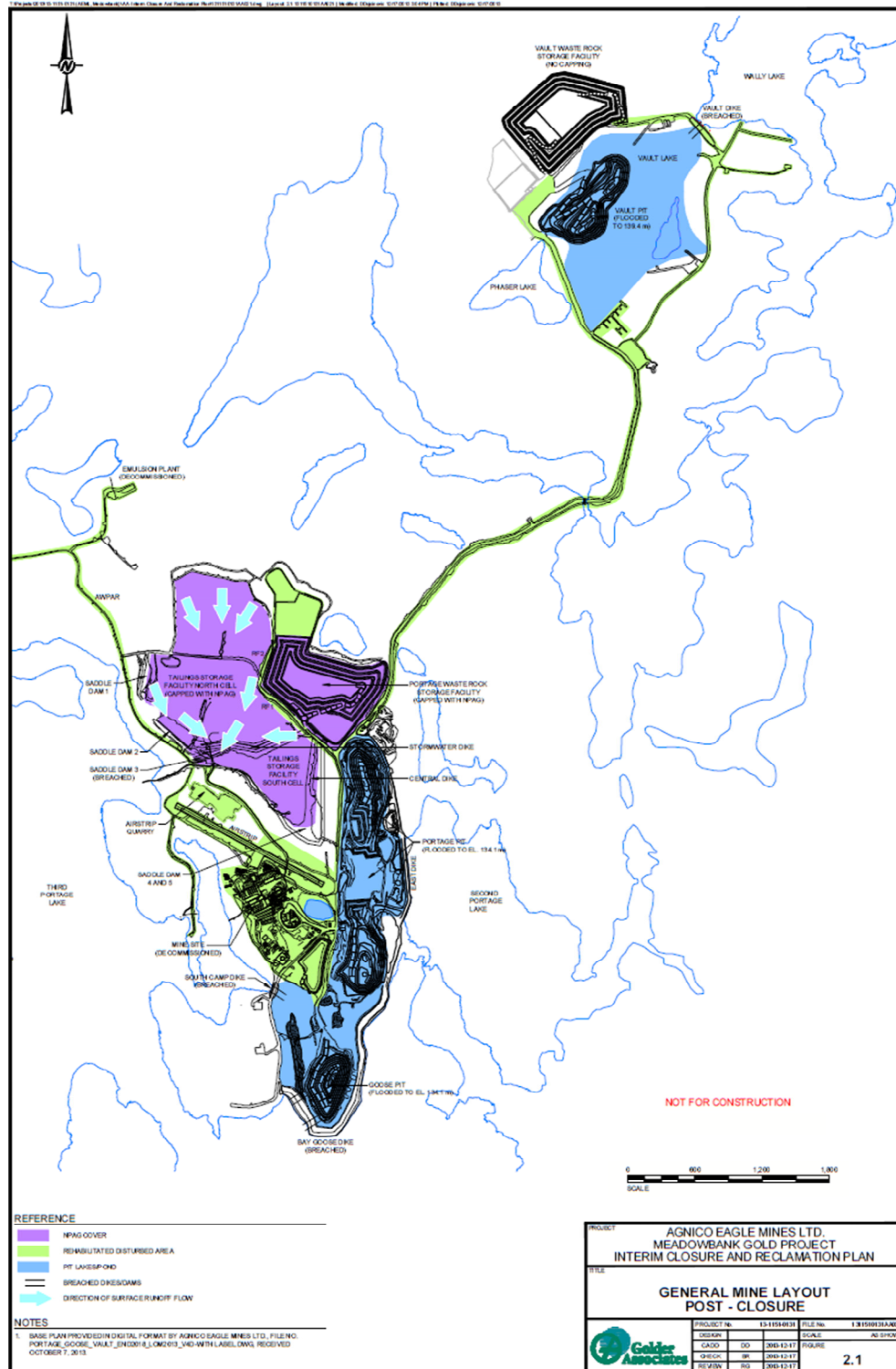


Figure 8-1: Site Post Closure Concept

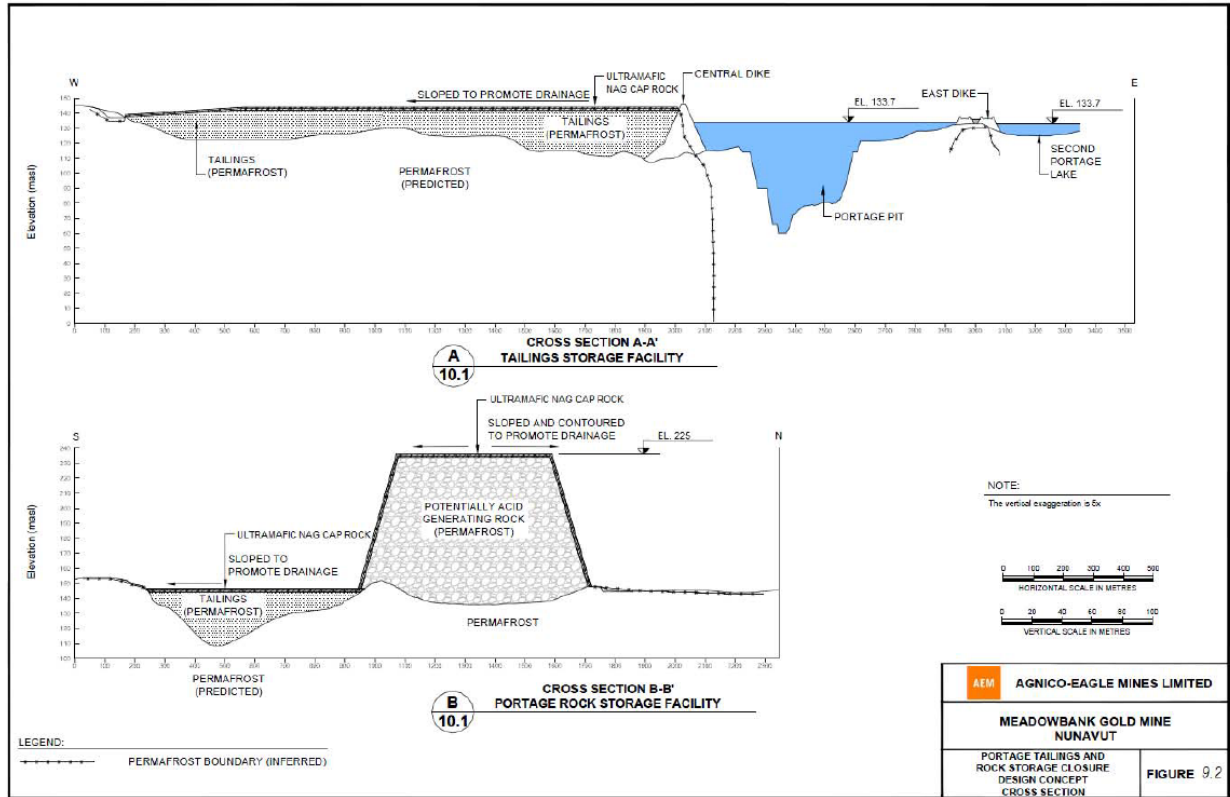


Figure 8-2: Portage Tailings and Rock Storage Closure Design Concept Cross Section

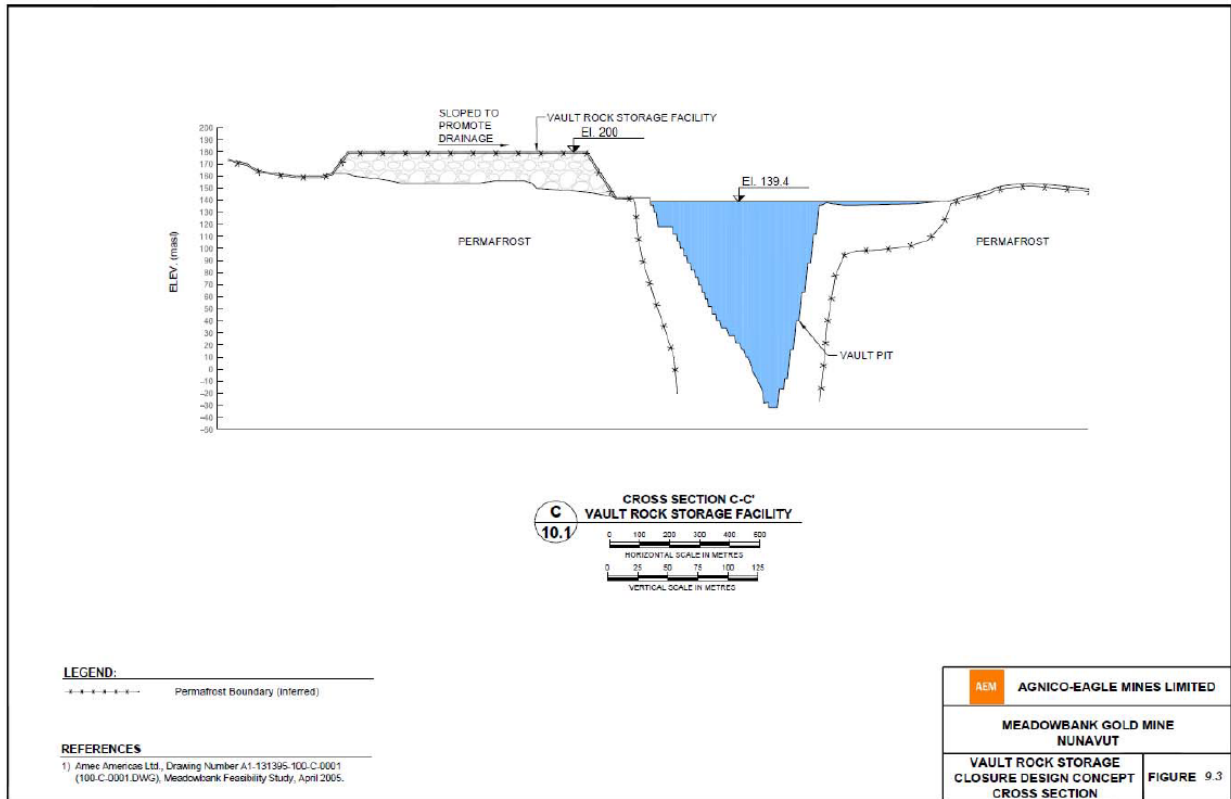


Figure 8-3: Vault Rock Storage Closure Design Concept Cross Section

9 REFERENCES

- AEM, 2013. Meadowbank Gold Project, Mine Waste Management Plan. October 2013
- Burn, C. R. 2003. Thermal modeling, Meadowbank Gold Project.
- Canadian Climate Data and Scenarios (CCDS). 2018. Online. <http://climate-scenarios.canada.ca/>
- Golder Associates Ltd. (Golder), 2008a. Coupled Thermal/Seepage and Contaminant Transport Modeling For The Tailings Facility, Meadowbank Gold Project. August 1, 2008.
- Golder Associate Ltd (Golder) 2012. Tailings Deposition Plan – Update 2012, Meadowbank Project, Doc 1344, issued in April 2012
- Golder Associate Ltd (Golder) 2014. Interim Closure, Meadowbank Project, Doc 1344, issued in April 2012
- Hayley, D. W. 2004. Climate Change – An Adaptation Challenge for Northern Engineers. The PEGG. January 2004, p.21.
- Hayley, D.W. and Cathro D.C. 1996. Working with Permafrost when Planning an Arctic Mine. CIM Edmonton 96, April 28 - May 2, 1996, Edmonton, Alberta.
- IPCC (Intergovernmental Panel on Climate Change), 2007. Climate Change 2007: The Physical Science Basis.
- IPCC. 2013. Climate Change 2013: The Physical Science Basis. Contribution of Working Group I to the Fifth Assessment Report of the Intergovernmental Panel on Climate Change. Stocker, T.F., D. Qin, G.-K. Plattner, M. Tignor, S.K. Allen, J. Boschung, A. Nauels, Y. Xia, V. Bex and P.M. Midgley (eds.). Cambridge University Press. Cambridge, United Kingdom and New York, NY, USA.
- IPCC. 2018. Global warming of 1.5°C. An IPCC Special Report on the impacts of global warming of 1.5°C above pre-industrial levels and related global greenhouse gas emission pathways, in the context of strengthening the global response to the threat of climate change, sustainable development, and efforts to eradicate poverty. V. Masson-Delmotte, P. Zhai, H. O. Pörtner, D. Roberts, J. Skea, P.R. Shukla, A. Pirani, W. Moufouma-Okia, C. Péan, R. Pidcock, S. Connors, J. B. R. Matthews, Y. Chen, X. Zhou, M. I. Gomis, E. Lonnoy, T. Maycock, M. Tignor, T. Waterfield (eds.). World Meteorological Organization, Geneva, Switzerland,
- Meadowbank Mining Corporation (MMC), 2007a. Meadowbank Gold Project Preliminary Closure and Reclamation Plan. August, 2007.
- Pacific Climate Impacts Consortium (PCIC). 2018. Online. <https://pacificclimate.org/>



MEADOWBANK GOLD MINE
MINE WASTE ROCK AND TAILINGS
MANAGEMENT PLAN

APPENDIX A

Meadowbank Mined Material Balance (2009-2022)

Table A: Meadowbank Mined Tonnages for 2009

[illegible]

Table B: Meadowbank Mined Tonnages for 2010

	Portage Pit (tonnes)									Ore Processed in Mill (tonnes)
	Ore	Waste Rock								
		Dikes	Roads	Crushers	Waste Dump ¹	Landfill	Stockpiles	Other	Total	
January	97,446	223,842	190,281	156,162	173,736	-	-	-	744,021	-
February	43,979	281,368	46,654	123,727	359,649	-	32,298	1,295	844,991	47,745
March	75,333	503,299	107,635	-	197,125	23,540	-	-	831,599	163,399
April	116,940	258,416	63,100	171,451	428,814	-	-	6,196	927,977	176,857
May	136,444	258,481	10,019	148,576	672,724	-	-	50,073	1,139,873	177,610
June	152,606	534,039	24,748	126,155	401,748	-	-	12,632	1,099,322	215,389
July	236,768	471,106	176,169	127,379	237,095	-	-	-	1,011,749	193,422
August	225,467	493,626	506,385	168,085	115,930	-	-	-	1,284,026	215,559
September	272,675	503,624	606,044	161,673	214,866	5,621	-	-	1,491,828	227,502
October	232,888	235,924	595,322	56,337	461,627	53,522	-	-	1,402,832	198,394
November	247,401	3,813	104,087	8,991	963,805	-	-	-	1,080,596	218,260
December	323,641	-	299,167	8,991	1,118,767	-	-	-	1,426,925	214,400
TOTAL	2,161,588	3,767,538	2,729,611	1,257,527	5,345,886	82,683	32,298	70,196	13,285,739	2,048,537

1. Waste Rock disposed at the waste dump includes overburden stripped for exploitation of Portage Pit

Table C: Meadowbank Mined Tonnages for 2011

	Portage Pit (tonnes)									Ore Processed in Mill (tonnes)
	Ore	Waste Rock								
		Dikes	Roads	Crushers	Waste Dump ¹	Landfill	Stockpiles	Other	Total	
January	231,025	-	113,259	37,096	1,109,543	-	-	2,544	1,262,442	193,748
February	133,165	-	25,308	51,280	766,807	-	-	404	843,798	213,313
March	86,161	-	21,288	33,271	662,028	-	-	1,044	717,631	221,615
April	235,303	-	77,596	85,064	1,497,859	-	-	11,504	1,672,024	223,041
May	207,399	-	64,171	137,980	1,448,630	-	-	49,069	1,699,851	186,811
June	326,108	8,744	291,067	176,248	1,592,345	-	-	26,615	2,095,019	257,401
July	340,966	54,927	99,513	74,750	1,869,449	-	-	19,140	2,117,779	284,295
August	326,808	122,696	4,674	117,745	1,484,613	-	-	2,384	1,732,111	275,766
September	412,783	333,829	27,199	148,545	1,724,305	-	-	22,884	2,256,762	306,020
October	389,418	22,085	136,862	53,614	1,791,385	-	-	162,725	2,166,671	306,756
November	321,180	12,725	29,518	83,943	1,972,577	-	-	110,214	2,208,976	214,868
December	334,768	164,399	55,516	52,137	1,913,103	-	-	53,454	2,238,609	294,088
TOTAL	3,345,084	719,404	945,971	1,051,671	17,832,645	-	-	461,981	21,011,673	2,977,722

1. Waste Rock disposed at the waste dump includes overburden stripped for exploitation of Portage Pit

Table D: Meadowbank Mined Tonnages for 2012

	Portage Pit, Goose Pit & Vault Pit (tonnes)									Ore Processed in Mill (tonnes)
	Ore	Waste Rock								
		Dikes	Roads	Crushers	Waste Dump ¹	Landfill	Stockpiles	Other	Total	
January	312,546	-	25,347	853	1,707,100	-	-	568,896	2,302,196	275,186
February	320,370	-	57,299	-	1,859,479	-	-	276,030	2,192,808	307,134
March	311,938	-	4,574	33,835	1,760,145	-	-	374,271	2,172,825	304,740
April	318,550	-	29,748	171,964	2,187,929	-	-	183,366	2,573,007	285,702
May	253,947	37,372	200,732	103,650	2,000,982	-	-	231,500	2,574,236	320,542
June	276,731	78,343	281,403	64,460	1,866,369	-	-	226,695	2,517,270	294,829
July	354,765	9,991	342,978	134,006	1,791,752	-	-	268,051	2,546,777	337,110
August	271,444	260,083	261,459	214,516	1,327,154	-	-	720,701	2,783,914	352,831
September	364,410	674,872	515,804	7,309	1,446,572	-	-	273,284	2,917,841	313,014
October	119,100	-	488,259	-	2,163,147	-	-	590,936	3,242,342	358,860
November	133,041	6,880	281,560	7,439	2,081,931	-	-	337,974	2,715,783	356,646
December	176,287	105,724	142,448	-	2,178,832	-	-	577,195	3,004,199	314,317
TOTAL	3,213,129	1,173,266	2,631,610	738,031	22,371,392	-	-	4,628,899	31,543,198	3,820,911

1. Waste Rock disposed at the waste dump includes overburden stripped for exploitation of Portage Pit & Goose Pit

Table E: Meadowbank Mined Tonnages for 2013

	Portage Pit, Goose Pit & Vault Pit (tonnes)									Ore Processed in Mill (tonnes)
	Ore	Waste Rock								
		Dikes	Roads	Crushers	Waste Dump ¹	Landfill	Stockpiles	Other	Total	
January	184,536	-	14,052	531	2,486,541	-	-	222	2,501,346	320,729
February	196,802	-	61,036	8,913	2,495,018	-	-	-	2,564,967	329,709
March	311,380	1,520	58,325	393	2,691,265	-	-	294	2,751,797	368,323
April	271,823	317,845	79,530	77,730	2,071,408	-	-	82,810	2,629,323	309,458
May	336,532	269,930	51,645	-	2,299,765	-	-	29,650	2,650,990	363,625
June	249,724	397,170	252,710	153,310	1,443,285	-	-	494,975	2,741,450	355,498
July	330,024	54,525	16,010	111,360	2,234,897	-	-	340,655	2,757,447	368,058
August	316,136	-	92,460	145,385	2,824,875	-	-	125	3,062,845	321,294
September	307,532	-	61,465	5,940	2,774,724	-	-	98,255	2,940,384	357,595
October	353,697	-	33,470	-	2,504,101	-	-	188,000	2,725,571	377,118
November	282,046	-	35,365	-	2,637,689	-	-	-	2,673,054	300,779
December	299,298	-	18,490	-	2,073,386	-	-	125	2,092,001	370,655
TOTAL	3,439,530	1,040,990	774,558	503,562	28,536,954	0	0	1,235,111	32,091,175	4,142,841

1. Waste Rock disposed at the waste dump includes overburden stripped for exploitation of Portage Pit & Goose Pit

Table F: Meadowbank Mined Tonnages for 2014

	Portage Pit, Goose Pit & Vault Pit (tonnes)									Ore Processed in Mill (tonnes)
	Ore	Waste Rock								
		Dikes	Roads	Crushers	Waste Dump ¹	Landfill	Stockpiles	Other	Total	
January	223,588	-	-	-	1,731,954	-	-	28,475	2,187,943	364,275
February	291,542	-	-	-	1,032,536	-	-	5,554	1,876,728	314,877
March	400,472	-	246	-	1,768,995	-	-	7,891	2,681,239	303,462
April	314,088	49,640	-	98,086	1,792,686	-	-	21,683	2,598,780	355,557
May	239,028	40,939	-	40,939	1,435,491	-	-	332,704	2,673,027	339,395
June	337,659	123,348	-	123,348	1,852,273	-	-	348,606	2,573,438	356,065
July	347,514	470,324	-	470,365	1,052,263	-	-	810,414	2,650,362	361,983
August	333,746	284,388	-	284,389	1,117,766	-	-	728,531	2,602,482	341,168
September	307,532	-	-	-	1,473,602	-	-	397,963	2,431,958	354,171
October	360,860	451	-	-	1,534,790	-	-	33,932	2,214,199	308,014
November	324,971	-	-	-	1,565,615	-	-	57,065	2,265,457	349,780
December	350,972	-	-	-	1,441,827	-	-	5,447	1,960,172	369,259
TOTAL	3,831,972	969,090	246	1,017,127	17,799,797	0	0	2,778,266	28,715,785	4,118,006

1. Waste Rock disposed at the waste dump includes overburden stripped for exploitation of Portage Pit, Goose Pit, & Vault Pit

Table G: Meadowbank Mined Tonnages for 2015

	Portage Pit, Goose Pit & Vault Pit (tonnes)									Ore Processed in Mill (tonnes)
	Ore	Waste Rock								
		Dikes	Roads	Crushers	Waste Dump ¹	Landfill	Stockpiles	Other	Total	
January	386,670	240	105,275	240	1,210,880	-	382,115	328,000	2,413,420	363,485
February	319,494	-	3,836	2,894	1,340,755	-	376,732	220,739	2,264,450	304,126
March	413,718	-	164,531	15,439	1,535,819	-	79,336	246,948	2,455,791	322,865
April	326,603	-	45,986	19,698	1,701,286	-	38,059	941,986	3,073,618	301,220
May	421,329	7,743	87,127	1,155	1,550,668	-	417,637	914,675	3,400,334	358,783
June	300,844	15,732	19,602	19,438	1,654,038	-	476,220	522,338	3,008,212	359,079
July	383,427	282,843	96,679	68,334	1,447,386	-	549,248	308,208	3,136,125	353,824
August	293,046	234,032	24,069	45,617	2,149,965	-	460,273	129,812	3,336,814	361,766
September	298,214	102,009	54,488	25,549	2,675,549	-	230,741	136,669	3,523,219	280,235
October	361,340	31,103	137,850	-	2,839,411	-	156,915	-	3,526,619	354,968
November	350,347	783	11,090	-	2,438,493	-	184,551	43,385	3,028,649	358,507
December	289,204	-	84,473	7,331	2,651,063	-	-	-	3,032,071	313,994
TOTAL	4,144,236	674,485	835,006	205,695	23,195,313	-	3,351,827	3,792,760	36,199,322	4,032,852

1. Waste Rock disposed at the waste dump includes overburden stripped for exploitation of Portage Pit, Goose Pit, & Vault Pit

Table H: Meadowbank Mined Tonnages for 2016

	Portage Pit & Vault Pit (tonnes)									Ore Processed in Mill (tonnes)
	Ore	Waste Rock								
		Dikes	Roads	Crushers	Waste Dump ¹	Landfill	Stockpiles	Other	Total	
January	292,365	17,453	155,335	45,232	2,353,611	0	43,056	21	2,614,708	346,009
February	234,713	108,151	476,263	23,721	1,814,074	0	50,523	27	2,472,760	300,954
March	244,497	51,826	67,814	116,657	2,345,902	0	18,217	112	2,600,527	298,552
April	260,323	31,133	98,223	43,404	2,491,605	0	45,545	130	2,710,040	330,863
May	327,610	128,385	21,503	3,734	2,522,759	0	57,936	36,009	2,770,327	351,932
June	311,403	68,802	94,678	19,090	2,640,740	0	86,615	122	2,910,047	310,702
July	398,530	49,347	520	38,145	2,571,022	0	107,503	28	2,766,566	356,517
August	410,800	14,305	273,580	170,705	2,120,975	0	103,675	129	2,683,369	325,639
September	377,414	79,939	23,053	169,733	2,099,627	0	95,243	27	2,467,621	279,249
October	364,792		117,665	335	1,994,464	0	6,456	17	2,118,937	339,157
November	438,954	6,741	8,294	16,164	1,834,572	0	17,275	1,036	1,884,082	326,841
December	370,247	17,092	346	17,786	1,544,266	0	23,590	165	1,603,246	348,687
TOTAL	4,031,648	573,175	1,337,274	664,707	26,333,617	0	655,634	37,823	29,602,230	3,915,102

1. Waste Rock disposed at the waste dump includes overburden stripped for exploitation of Portage Pit & Vault Pit

Table I: Meadowbank Mined Tonnages for 2017

	Portage Pit & Vault Pit									Ore Processed in Mill (tonnes)
	(tonnes)									
	Ore	Waste Rock								
Dikes		Roads	Crushers	Waste Dump ¹	Landfill	Stockpiles	Other	Total		
January	386,298	45,991	0	12,301	1,498,959	0	14,815	6	1,572,073	331,889
February	374,894	6,084	22,937	23,998	1,251,365	0	404,648	2,977	1,712,008	314,269
March	376,855	167	8,508	12,614	919,668	0	483,332	583	1,424,872	279,684
April	355,410	0	10,674	17,671	1,002,425	0	655,770	10	1,686,550	328,391
May	437,319	0	135,889	84,180	933,559	0	434,648	27,889	1,616,165	344,961
June	401,035	12,537	14,316	88,241	977,125	0	522,816	2,588	1,617,623	322,939
July	334,363	183,868	66,559	6,647	1,016,081	0	523,311	0	1,796,466	336,222
August	391,414	485,008	12,182	2,361	1,271,636	0	97,549	19,925	1,888,662	326,409
September	343,504	13,148	107,454	14,945	1,246,694	0	509,366	189	1,891,796	275,754
October	364,663	259,074	57,565	528	1,169,063	0	255,796	1,991	1,744,017	328,028
November	321,403	21,676	653	5,395	1,406,720	0	69,651	1,362	1,505,456	330,465
December	352,291	0	401	571	1,781,334	0		7	1,782,313	334,023
TOTAL	4,439,449	1,027,553	437,137	269,453	14,474,629	0	3,971,701	57,528	20,238,001	3,853,034

1. Waste Rock disposed at the waste dump includes overburden stripped for exploitation of Portage Pit & Vault Pit

Table J: Meadowbank Mined Tonnages for 2018

	Portage Pit & Vault Pit (tonnes)									Ore Processed in Mill (tonnes)
	Ore	Waste Rock								
		Dikes	Roads	Crushers	Waste Dump ¹	Landfill	Stockpiles	Other	Total	
January	298,411	308	8,958	1,292	1,286,572	0	378	41,538	1,637,457	290,277
February	236,865	0	83,624	27,237	1,199,432	0	251	149,036	1,696,445	288,375
March	256,063	675	5,961	22,917	1,310,619	0	1,446	165,562	1,763,243	246,416
April	225,990	56,338	440	101,881	1,228,920	0	86,609	229,113	1,929,291	254,528
May	230,283	0	50,282	0	1,198,847	0	13,831	150,173	1,643,416	301,915
June	222,227	0	3,360	0	929,405	0	1,112	119,259	1,275,363	287,319
July	190,331	0	2,918	0	681,804	0	3,196	166,296	1,044,545	347,236
August	179,509	0	7,002	0	606,678	0	661	49,324	843,174	303,191
September	210,884	0	3,482	0	609,036	0	12,180	126,692	962,274	237,935
October	174,656	0	2,510	0	494,411	0	272	118,340	790,189	239,674
November	194,071	0	1,768	0	532,824	0	336	119,821	848,820	215,299
December	204,293	0	1,066	0	508,417	0	3,392	69,652	786,820	244,500
TOTAL	2,623,583	57,321	171,371	153,327	10,586,965	0	123,664	1,504,806	15,221,037	3,256,665

1. Waste Rock disposed at the waste dump includes overburden stripped for exploitation of Portage Pit & Vault Pit

Table K: Meadowbank Mined Tonnages for 2019

Month	Portage Pit & Vault Pit (tonnes)								Ore Processed in Mill (tonnes)
	Ore	Waste Rock							
		Dikes	Roads	WRSF	Backfill	Stockpiles	Other	Total	
January	144,114	86	565	39,778	140,693	269	96,170	277,561	251,914
February	111,814	0	435	24,953	148,716	83	39,017	213,204	208,736
March	120,143	0	131	3,641	256,068	0	3,682	263,522	176,931
April	100,456	0	9065	22,390	169,688	296	52,685	254,124	213,095
May	83,237	0	20,906	15,132	76,700	0	0	112,738	191,880
June	46,290	0	7,766	12,490	99,907	8,265	0	128,427	224,028
July	44,584	0	348	6,873	49,797	0	24,795	81,813	334,437
August	55,282	0	9,244	9,803	95,245	696	110,604	225,592	70,519
September	10,965	0	348	0	49,961	174	2,436	52,919	0
October	30,659	0	1,974	2,233	15,498	336	462	20,503	6,280
November	0	0	1,680	0	0	0	0	1,680	119,445
December	0	0	0	0	0	0	0	0	6,091
TOTAL	747,544	86	52,461	137,293	1,102,273	10,118	329,851	1,632,083	1,803,356

Table L: Meadowbank Mined Tonnages for 2020-2022

		2020	2021	2022 (Projected)
Portage Pit	Total Waste Rock (t)	0	0	0
	<i>NAG (~ %)</i>	N/A	N/A	N/A
	<i>PAG (~ %)</i>	N/A	N/A	N/A
	Till (t)	0	0	0
	Ore (t)	0	0	0
Vault Pit	Total Waste Rock (t)	0	0	0
	<i>NAG (~ %)</i>	N/A	N/A	N/A
	<i>PAG (~ %)</i>	N/A	N/A	N/A
	Till (t)	0	0	0
	Ore (t)	0	0	0
BB Phaser Pit	Total Waste Rock (t)	0	0	0
	<i>NAG (~ %)</i>	N/A	N/A	N/A
	<i>PAG (~ %)</i>	N/A	N/A	N/A
	Till (t)	0	0	0
	Ore (t)	0	0	0

Note: Difference between pit mill feed and total mill feed is due to stockpiled material to be processed.

Table M: Waste Rock Mined Compared to FEIS Prediction

	Portage/Goose			Vault		
	Non-PAG	Uncertain	PAG ¹	Non-PAG	Uncertain	PAG ¹
FEIS Estimated Quantity (10 ⁶ tonnes)	64.3	8.9	28.8	51.0	7.5	9.5
Mined Quantity (10 ⁶ tonnes)	54.0	0	91.5	54.0	0.0	23.7

¹ PAG quantity includes ORE for Mined Quantity



MEADOWBANK GOLD MINE
MINE WASTE ROCK AND TAILINGS
MANAGEMENT PLAN

APPENDIX B

TSF and Pits Integrated Deposition Plan



AGNICO EAGLE

2022 TAILINGS DEPOSITION PLAN

MEADOWBANK

PLAN UPDATE : January 2022

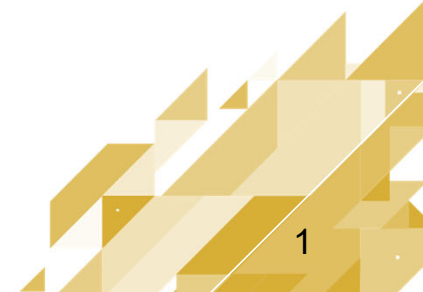


TABLE OF CONTENTS

- **IPD Plan Objectives**
- **Parameters and Assumptions**
 - Tailing properties
 - Mill Water Requirement
 - Annual Water Objectives
 - Water Transfers
- **2022 IPD Deposition Plan**
 - Current State – Sept 2021
 - Deposition Schedule
 - Water Level Projection
- **Path Forward**
 - Risks & Opportunities



AGNICO EAGLE

Meadowbank – Aug 2021



AGNICO EAGLE

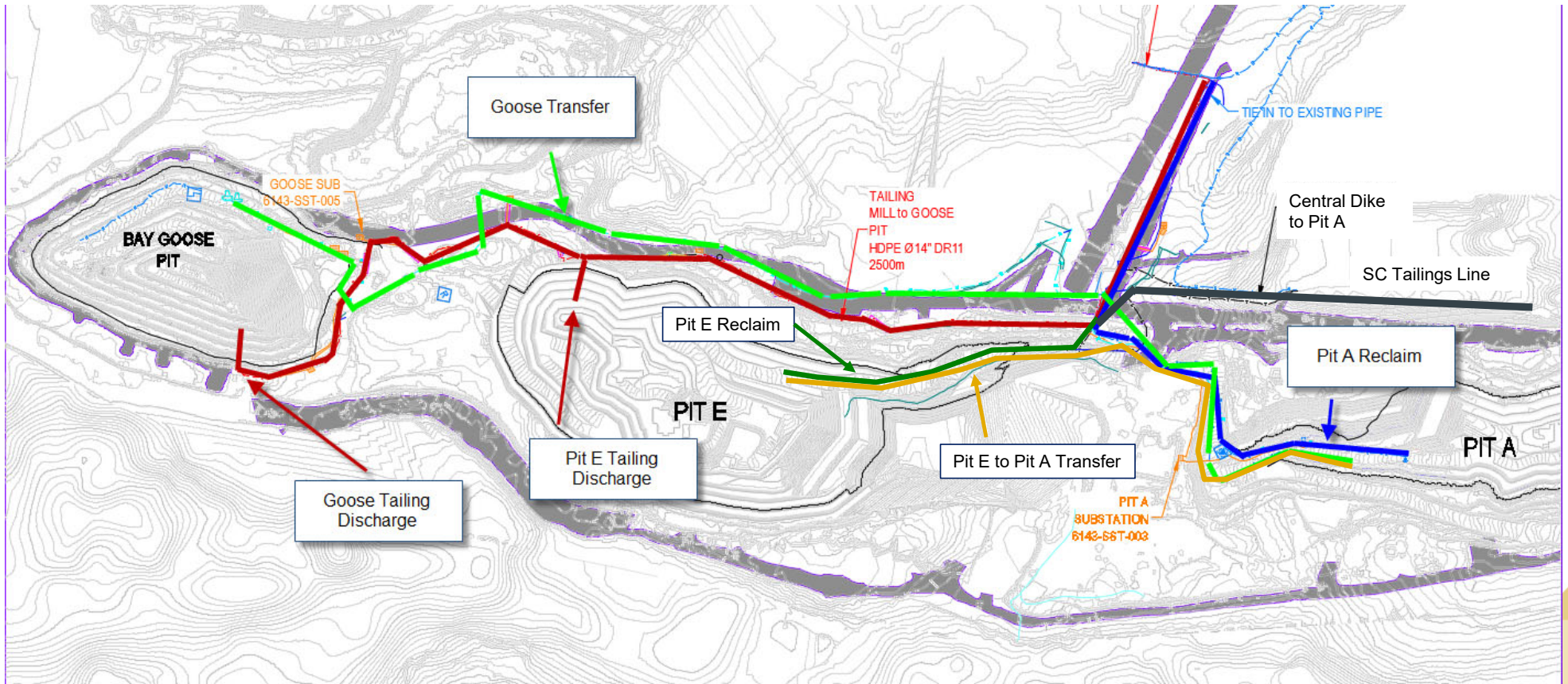
INTRODUCTION

- IPD Plan Objectives
 - Provide global construction schedule update
 - Identify deposition needs
 - Identify water transfer requirements
 - Set reclaim requirement
 - Update plan based on current parameters
 - Minimise freshwater consumption
 - Evaluate South Cell Tailings Deposition
 - Establish In Pit Deposition KPIs
- Deposition Plan modeling steps:
 - *Quarterly for 2022-2023*
 - *Yearly from 2023-2026*
- Starting water balance & surfaces: September 2021

IN-PIT DEPOSITION - 2022 INFRASTRUCTURE OVERVIEW



AGNICO EAGLE



Current IPD Infrastructure Map— October 2021

IPD 2022 PLAN – PARAMETERS AND ASSUMPTIONS

2022 parameters and assumptions

- Based on historical values
- Based on 2021 bathymetry
- Based on initial SNC report
- Average precipitation values based on previous year

List of parameters / influencing factors

1. Tailings Slope angle (1.5%)
2. Waste In pit Dump porosity (30%)
3. Slurry density (1.56 t/m³)
4. In Situ density (1.5 t/m³)
5. Tailing Water entrapment (13%)
6. Mill consumption (1.07 m³/t)
7. Reclaim pump performance
8. Fresh water intake (0.2 m³/t)
9. Hydraulic connection between Pit A & Pit E (>86.5 masl)



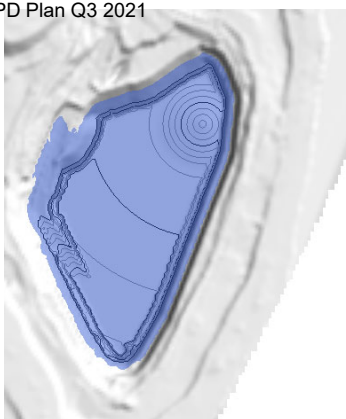
Pit E Deposition – October 2021

IPD 2022 PLAN – GOOSE PIT TAILINGS PROPERTIES

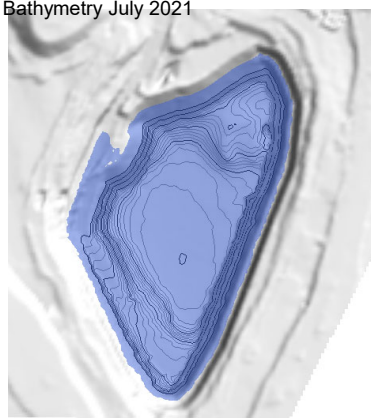


- **Bathymetry date: July 17 2021**
 - No deposition in Goose pit since August 2020

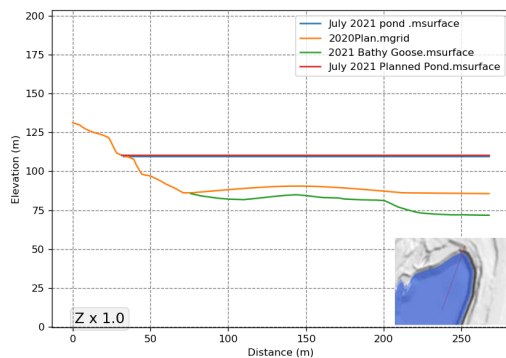
Goose Pit – IPD Plan Q3 2021



Goose Pit – Bathymetry July 2021



Goose Pit – Cross Section



Goose Pit – Comparison

Aug-21	Max Tailings Elevation (masl)	Water Elevation (masl)
Actual	84.7	109.6
Plan	93.2	110.4
Variation	-8.5	-0.8

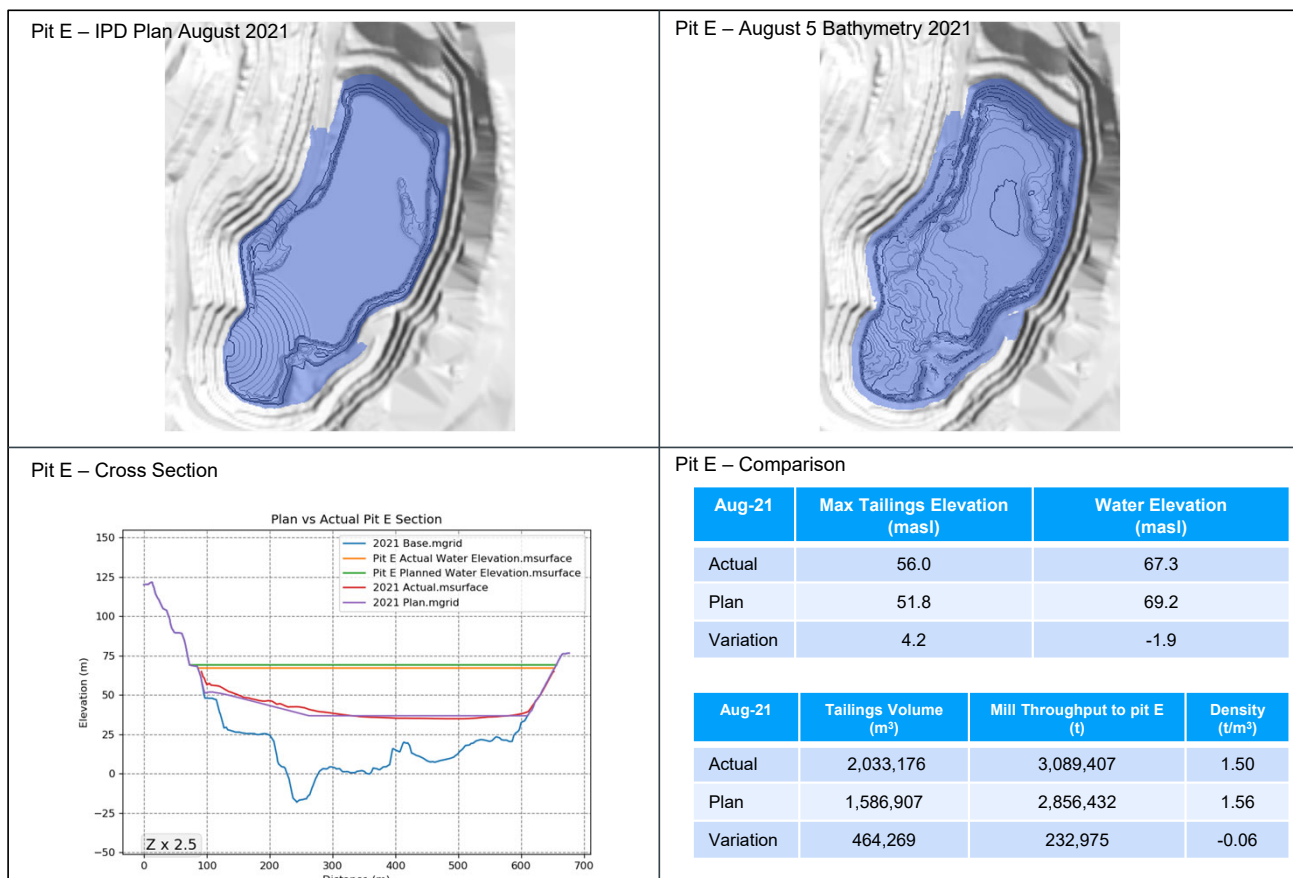
Aug-21	Tailings Volume (m³)	Throughput to Goose (t)	Density (t/m³)
Actual	1,460,641	2,731,838	1.87
Plan	2,130,940	3,449,932	1.62
Variation	-670299	-718094	+0.25

Tailing Properties

- Tailing Slope Angle: 2.4%
 - Slope for 50m and then flat
- Slurry Density: 1.56 t/m³
- In Situ Density: 1.87 t/m³
 - Consolidation from 1.80 t/m³ measured last year
- Water entrapment: 13%

IPD 2022 PLAN – PIT E TAILINGS PROPERTIES

- Bathymetry date: August 5th 2021
 - Original plan assumed higher tonnage of NC Deposition in July – August



2022 – MILL WATER REQUIREMENT



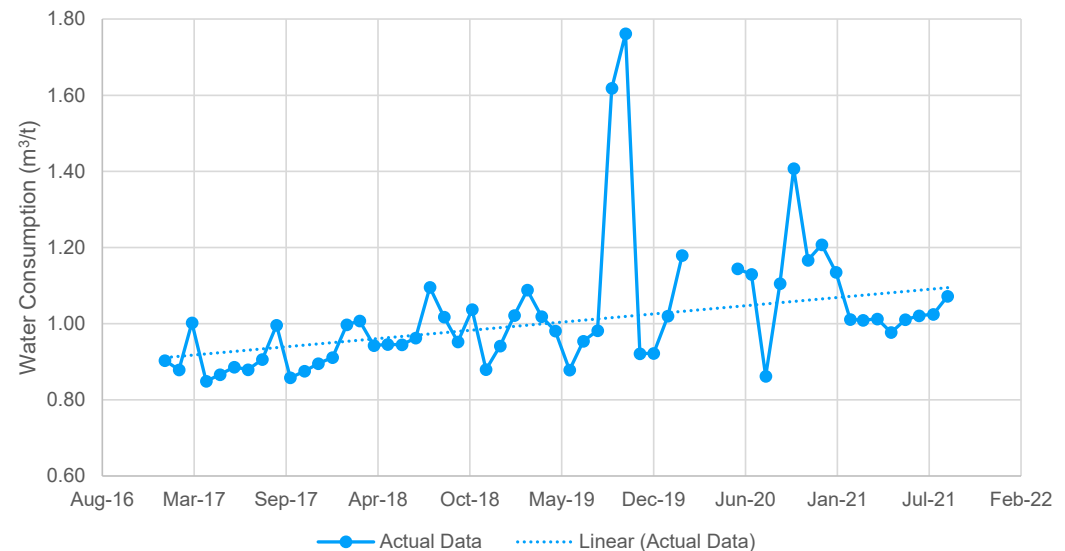
AGNICO EAGLE

- **Total Water used (m^3) / Mill Throughput (t)**
 - Important ratio used to plan water consumption and reclaim requirement
 - For the past few years, this ratio has increased from $0.85 m^3/t$ to $1.10 m^3/t$
 - This is an increase of +/- 30%
- **This increase might be due to several factors**
 - Addition of regrind circuit into mill process
 - Complex ore body from IVR
- **$1.07 m^3/t$ will be used as assumption for 2022+**
 - Average of past 2020-2021 values without outliers

Reclaim (t/m ³)	0.87
Fresh Water (t/m ³)	0.20 *

* Identified as achievable target, based on current consumption at the Mill and reclaim performance

Total water consumption per tonne milled: 2016-2021



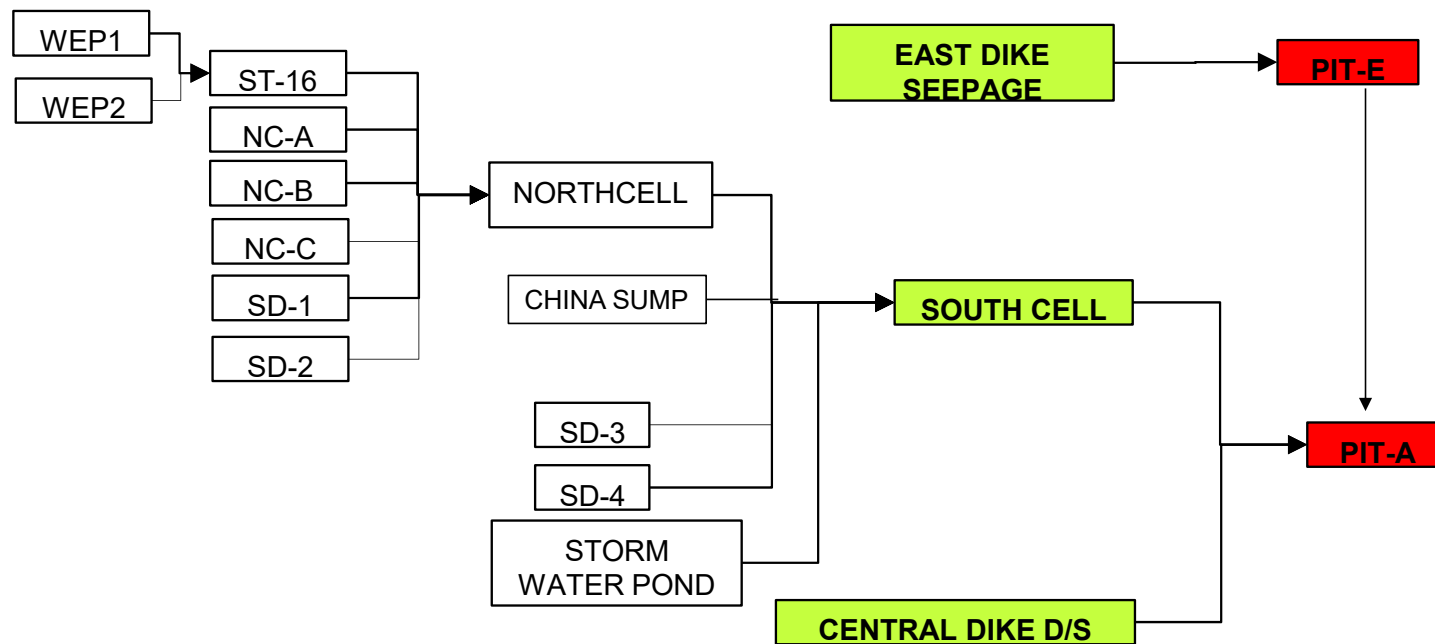
Historical total water consumption per tonne milled (m^3/t)

2022 WATER OBJECTIVES



Objective	Target 2022
Fresh Water Withdrawn from 3PL (Mill + Camp)	807,000 m ³
Contact Water withdrawn from Pit E (Reclaim to Mill)	3,508,822 m ³
Fresh water per tonne ore processed	0.20 m ³ /t
Treated Water Discharge	0 m ³
Water Discharged (East Dike to 2PL)	70,000 m ³
Water in Recirculation (Water recycled / total water use)	81.3 %

2022 – WATER TRANSFERS



IPD 2022 PLAN – SEPTEMBER 2021 START POINT



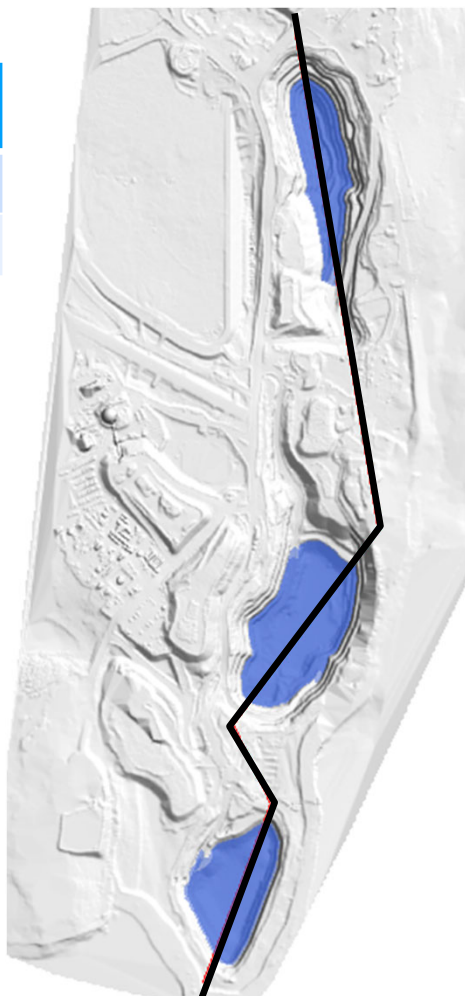
AGNICO EAGLE

Current Water Elevations:

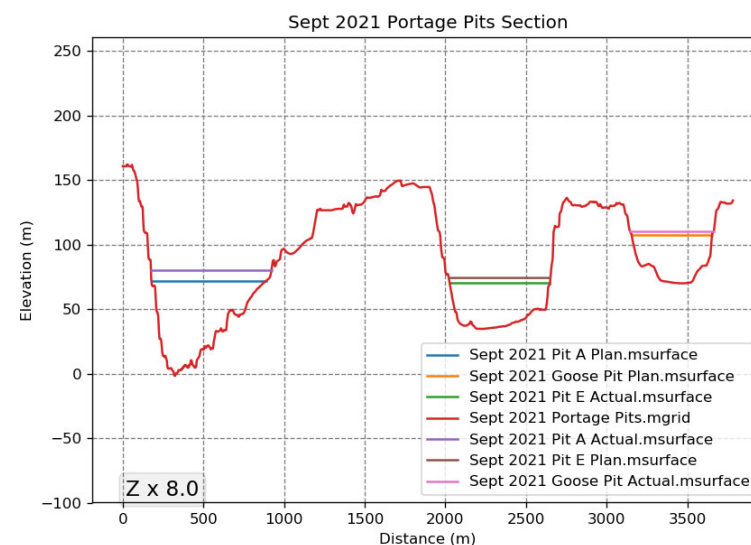
	Pit A (masl)	Pit E (masl)	Goose (masl)
Actual – Sept 2021	80.11	70.35	110.50
Plan - Sept 2021	79.33	74.01	109.64

Variance

- Pit E lower than planned due to no transfer from Goose pit in comparison to IPD 2021 planning 3 months of transfer (1.1Mm³)
- Pit A higher than planned due to unplanned transfer from Goose pit to Pit A instead of Pit E (0.4Mm³)
- Goose Pit higher due to lower than planned outflow from transfer (0.6Mm³)
- Total Volume (Tailing + Water) stored in In Pit: **14.44 Mm³**
- Total Storage Capacity (134 masl): **48.1 Mm³**
- **Already used 30% total storage capacity**



		Goose Pit	Pit A	Pit E
Total Water Volume	Mm ³	3.49	3.69	3.73
Total Volume of tailings	Mm ³	1.29	0	2.22
Max Storage Capacity	Mm ³	4.32	4.32	9.17



IPD 2022 PLAN – DEPOSITION SCHEDULE



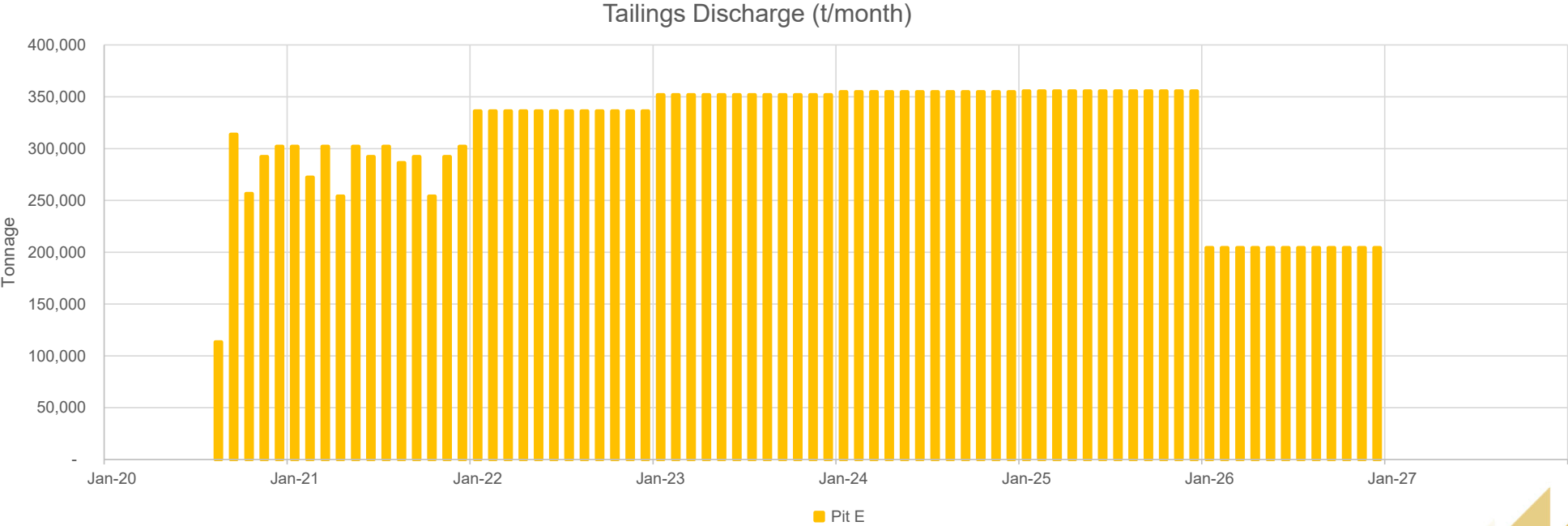
AGNICO EAGLE

2022 IPD Deposition Location Schedule

		2020	2021				2022				2023				2024				2025				2026			
Deposition Location	Pit A																									
	North Cell																									
	Pit E																									
Goose Transfer	Goose																									
Reclaim Location	Pit A																									
	Pit E																									

- Tailings Deposition: Pit E
- Reclaim from: Pit E *Pit A is the backup reclaim system
- Water Transfer: Pit E → Pit A
- No Goose Pit transfers planned

PLANNED 2022BUD SC2 MILL THROUGHPUT



IPD 2022 PLAN – Q1 2022

Forecast In-pit results

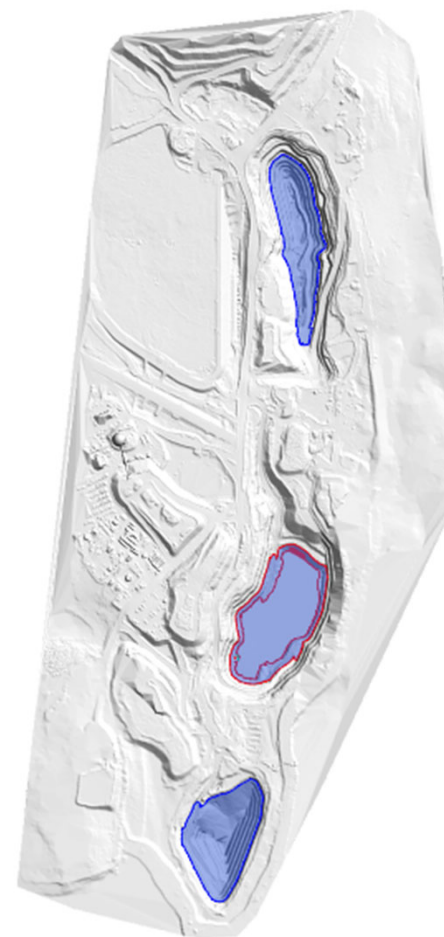
Location	Tailing Discharge (t)	Tailing Elev (masl)	Water Elev (masl)
Goose	0	80.5	111.49
Pit E	1,008,750	54.7	73.54
Pit A	0	0.00	87.16

Mill Water Consumption

Source	Origin	Volume (m3)	Average flow m3/h
Reclaim Water	Pit E	822,752	381
Fresh Water	Third Portage Lake	180,902	88

Notes:

- Deposition occurs in Pit E
- Reclaim from Pit E
- Pit E Water Level Portage Pits connection at 86.5
 - Water will overflow to Pit E through Central Dump



MBK – Plan View

IPD 2022 PLAN – Q2 2022

Forecast In-pit results

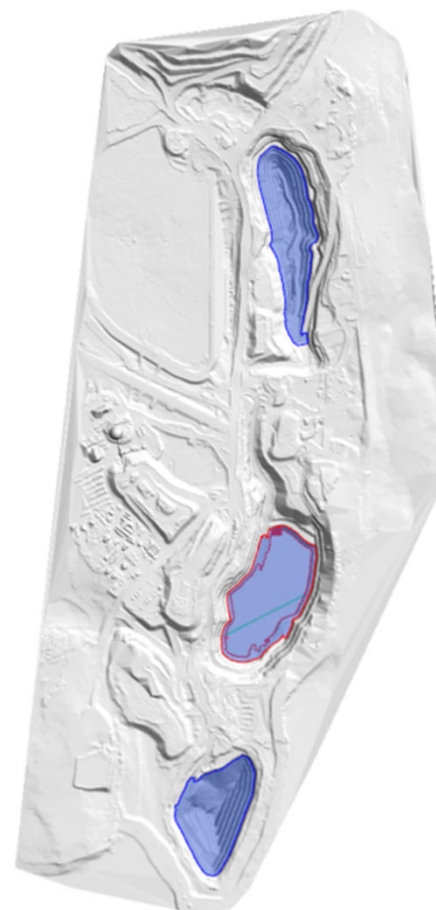
Location	Tailing Discharge (t)	Tailing Elev (masl)	Water Elev (masl)
Goose	0	80.5	112.49
Pit E	1,008,750	59.7	73.56
Pit A	0	0.00	93.63

Mill Water Consumption

Source	Origin	Volume (m3)	Average flow m3/h
Reclaim Water	Pit E	870,038	398
Fresh Water	Third Portage Lake	200,009	92

Notes:

- Deposition occurs in Pit E
- Reclaim from Pit E
- Pit E Water Level Portage Pits connection at 86.5
 - Water will overflow to Pit E through Central Dump



MBK – Plan View



AGNICO EAGLE

IPD 2022 PLAN – Q3 2022

Forecast In-pit results

Location	Tailing Discharge (t)	Tailing Elev (masl)	Water Elev (masl)
Goose	0	80.5	113.4
Pit E	1,008,750	64.4	75.07
Pit A	0	0.00	100.10

Mill Water Consumption

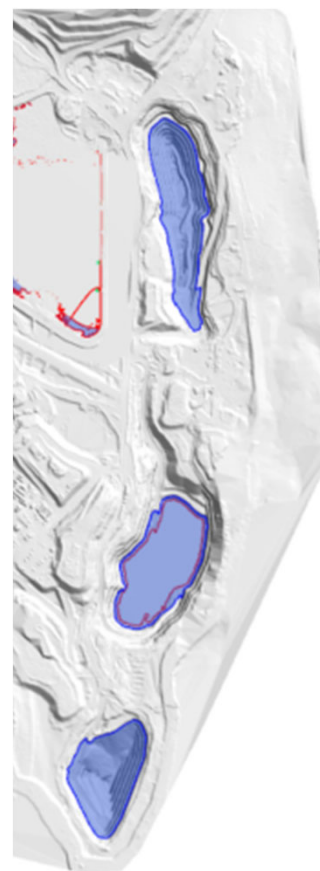
Source	Origin	Volume (m3)	Average flow m3/h
Reclaim Water	Pit E	944,046	428
Fresh Water	Third Portage Lake	217,022	98

Notes:

- Deposition occurs in Pit E & South Cell
- Reclaim from Pit E
- Pit E Water Level Portage Pits connection at 86.5
 - Water will overflow to Pit E through Central Dump



AGNICO EAGLE



MBK – Plan View

IPD 2022 PLAN – Q4 2022

Forecast In-pit results

Location	Tailing Discharge (t)	Tailing Elev (masl)	Water Elev (masl)
Goose	0	80.5	114.06
Pit E	1,008,750	68.7	77.95
Pit A	0	0.00	101.91

Mill Water Consumption

Source	Origin	Volume (m3)	Average flow m3/h
Reclaim Water	Pit E	873,240	396
Fresh Water	Third Portage Lake	200,745	91

Notes:

- Deposition occurs in Pit E
- Reclaim from Pit E
- Pit E Water Level Portage Pits connection at 86.5
 - Water will overflow to Pit E through Central Dump



AGNICO EAGLE



MBK – Plan View

IPD 2022 PLAN – Q1 2023

Forecast In-pit results

Location	Tailing Discharge (t)	Tailing Elev (masl)	Water Elev (masl)
Goose	0	80.5	114.71
Pit E	1,055,500	72.8	80.20
Pit A	0	0.00	103.88

Mill Water Consumption

Source	Origin	Volume (m3)	Average flow m3/h
Reclaim Water	Pit E	909,483	421
Fresh Water	Third Portage Lake	200,527	97

Notes:

- Deposition occurs in Pit E
- Reclaim from Pit E
- Pit E Water Level Portage Pits connection at 86.5
 - Water will overflow to Pit E through Central Dump



AGNICO EAGLE



MBK – Plan View

IPD 2022 PLAN – Q2 2023

Forecast In-pit results

Location	Tailing Discharge (t)	Tailing Elev (masl)	Water Elev (masl)
Goose	0	80.5	115.67
Pit E	1,055,500	76.6	84.32
Pit A	0	0.00	106.95

Mill Water Consumption

Source	Origin	Volume (m3)	Average flow m3/h
Reclaim Water	Pit E	885968	406
Fresh Water	Third Portage Lake	203671	93

Notes:

- Deposition occurs in Pit E
- Reclaim from Pit E
- Pit E Water Level Portage Pits connection at 86.5
 - Water will overflow to Pit E through Central Dump



MBK – Plan View



AGNICO EAGLE

IPD 2022 PLAN – Q3 2023

Forecast In-pit results

Location	Tailing Discharge (t)	Tailing Elev (masl)	Water Elev (masl)
Goose	0	80.5	116.56
Pit E	1,055,500	80.2	88.96
Pit A	0	0.00	110.51

Mill Water Consumption

Source	Origin	Volume (m3)	Average flow m3/h
Reclaim Water	Pit E	929,694	421
Fresh Water	Third Portage Lake	213723	97

Notes:

- Deposition occurs in Pit E and South cell
- Reclaim from Pit E
- Pit E Water Level Portage Pits connection at 86.5
 - Water will overflow to Pit E through Central Dump



AGNICO EAGLE



MBK – Plan View

IPD 2022 PLAN – Q4 2023

Forecast In-pit results

Location	Tailing Discharge (t)	Tailing Elev (masl)	Water Elev (masl)
Goose	0	80.5	117.20
Pit E	1,055,500	83.6	93.80
Pit A	0	0.00	110.60

Mill Water Consumption

Source	Origin	Volume (m3)	Average flow m3/h
Reclaim Water	Pit E	901763	408
Fresh Water	Third Portage Lake	207302	94

Notes:

- Deposition occurs in Pit E
- Reclaim from Pit E
- Pit E Water Level Portage Pits connection at 86.5
 - Water will overflow to Pit E through Central Dump



MBK – Plan View



AGNICO EAGLE

IPD 2022 PLAN – Q4 2024

Forecast In-pit results

Location	Tailing Discharge (t)	Tailing Elev (masl)	Water Elev (masl)
Goose	0	80.5	120.22
Pit E	4,255,000	92.7	112.17
Pit A	0	0.00	114.61

Mill Water Consumption

Source	Origin	Volume (m3)	Average flow m3/h
Reclaim Water	Pit E	3,753,582	429
Fresh Water	Third Portage Lake	862,892	99

Notes:

- Deposition occurs in Pit E
- Reclaim from Pit E
- Pit E Water Level Portage Pits connection at 86.5
 - Water will overflow to Pit E through Central Dump



MBK – Plan View



AGNICO EAGLE

IPD 2022 PLAN – Q4 2025

Forecast In-pit results

Location	Tailing Discharge (t)	Tailing Elev (masl)	Water Elev (masl)
Goose	0	80.5	123.07
Pit E	4,265,000	100.5	122.40
Pit A	0	0.00	121.73

Mill Water Consumption

Source	Origin	Volume (m3)	Average flow m3/h
Reclaim Water	Pit E	3,753,582	429
Fresh Water	Third Portage Lake	828,217	99

Notes:

- Deposition occurs in Pit E
- Reclaim from Pit E
- Pit E Water Level Portage Pits connection at 86.5
 - Water will overflow to Pit E through Central Dump



AGNICO EAGLE



MBK – Plan View

IPD 2022 PLAN – Q4 2026

Forecast In-pit results

Location	Tailing Discharge (t)	Tailing Elev (masl)	Water Elev (masl)
Goose	0	80.5	125.70
Pit E	2,452,605	90.2	126.52
Pit A	0	0.00	128.86

Mill Water Consumption

Source	Origin	Volume (m3)	Average flow m3/h
Reclaim Water	Pit E	3,441,082	393
Fresh Water	Third Portage Lake	791,053	90

Notes:

- Deposition occurs in Pit E
- Reclaim from Pit E
- Pit E Water Level Portage Pits connection at 86.5
 - Water will overflow to Pit E through Central Dump

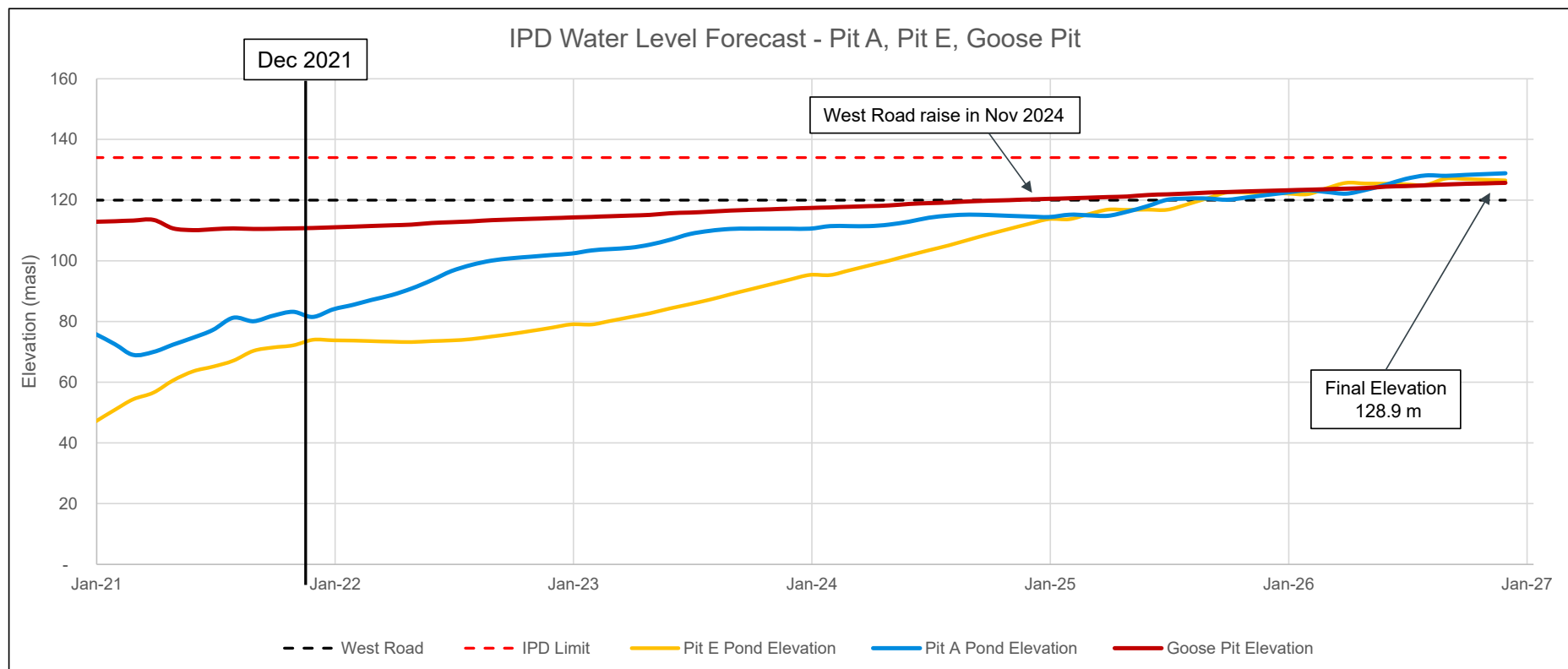


MBK – Plan View



AGNICO EAGLE

IPD – WATER LEVEL PROJECTION



RISKS AND OPPORTUNITIES



AGNICO EAGLE

Risks

- HPGR addition in April 2022 - Increased throughput at Mill, additional reclaim requirement may be above design max. flow rate (550 m³/h)

Opportunities

- Reduce closure costs at South Cell with additional tailings deposition
- Improve mill fresh water consumption to beat the 0.2 m³/t target – reduce water sent to Portage Pits
- No reliance on submersible pumps for Pit E reclaim – eliminate many operational issues in the winter

ADDITIONAL PARAMETERS



AGNICO EAGLE

- The following slides present some additional tailings deposition planning parameters formerly presented in the Mine Waste Management Plan that are better suited to be shown with the 2022 Tailings Deposition Plan

2021 PROCESSED TAILINGS VOLUME AND ASSOCIATED PROPERTIES



	Total Dry Tailings (tonnes)	Density of Slurry (tonnes / m ³)
January-21	321,759	1.5
February-21	290,338	1.5
March-21	311,487	1.5
April-21	246,082	1.5
May-21	313,291	1.5
June-21	321,462	1.5
July-21	313,418	1.5 (1.56 for NC)
August-21	331,671	1.5 (1.56 for NC)
September-21	326,619	1.5
October-21	247,126	1.5
November-21	332,683	1.5
December-21	214,589	1.5
TOTAL-2021	3,570,525	

INPUT PARAMETERS FOR TAILINGS DEPOSITION PLAN – 2022

DEPOSITION PLAN



Period	Dried Tonnage (tonnes)	IPD Specific Gravity (t/m ³)	IPD TDD (t/m ³)	Tailings Beach Slope – First 100m	Tailings Beach Slope – Post 100m
Jan-22	316,680	2.96	1.5	4.7	10.36
Feb-22	285,360	2.96	1.5	4.7	10.36
Mar-22	345,218	2.96	1.5	4.7	10.36
Apr-22	288,908	2.96	1.5	4.7	10.36
May-22	355,141	2.96	1.5	4.7	10.36
Jun-22	355,995	2.96	1.5	4.7	10.36
Jul-22	368,134	2.96	1.5	4.7	10.36
Aug-22	360,982	2.96	1.5	4.7	10.36
Sep-22	355,995	2.96	1.5	4.7	10.36
Oct-22	289,680	2.96	1.5	4.7	10.36
Nov-22	345,910	2.96	1.5	4.7	10.36
Dec-22	368,134	2.96	1.5	4.7	10.36

INPUT PARAMETERS FOR TAILINGS DEPOSITION PLAN – 2022 DEPOSITION PLAN



Period	Dried Tonnage (tonnes)	IPD Specific Gravity (t/m ³)	IPD TDD (t/m ³)	Tailings Beach Slope – First 100m	Tailings Beach Slope – Post 100m
Jan-23	360,076	2.96	1.5	4.7	10.36
Feb-23	325,230	2.96	1.5	4.7	10.36
Mar-23	360,076	2.96	1.5	4.7	10.36
Apr-23	322,474	2.96	1.5	4.7	10.36
May-23	347,419	2.96	1.5	4.7	10.36
Jun-23	348,461	2.96	1.5	4.7	10.36
Jul-23	360,076	2.96	1.5	4.7	10.36
Aug-23	360,076	2.96	1.5	4.7	10.36
Sep-23	348,461	2.96	1.5	4.7	10.36
Oct-23	337,806	2.96	1.5	4.7	10.36
Nov-23	338,627	2.96	1.5	4.7	10.36
Dec-23	360,076	2.96	1.5	4.7	10.36