

## CONSTRUCTION SUMMARY REPORT

Agnico Eagle Mines Ltd

Report

653281-0004-40ER-0001\_0

July 19, 2019

Prepared by:

---

**Israël Gagnon**, P. Eng., MBA

Approved by:

---

**Alain Parent**  
Project Construction Manager - Amaruq

# EXECUTIVE SUMMARY

---

SNC-Lavalin Stavibel Inc was retained by Agnico Eagle Mines Limited (AEM) to prepare the Sewage treatment plant (STP) construction summary (as-built) report for the Whale Tail Project, Nunavut. SNC Lavalin Stavibel inc previously prepared the specifications as well as the STP design report.

SNC-Lavalin Stavibel Inc. was not involved in the STP construction. The information presented in this report was provided by AEM.

The STP construction was completed in April 2019. The construction monitoring and quality assurance was managed by Agnico Eagle.

This report summarizes the construction as-built information for the Sewage treatment plant.

# Table of Contents

1. Introduction	4
2. Construction Summary	4
2.1 Site location plan	4
2.2 Equipment	6
2.3 Schedule	6
2.4 Drawings and photographs	6
3. Field decisions	6
3.1 Equipment and controls	6
3.2 Pipelines	7
4. Mitigation measure	7
5. Construction monitoring and inspection test plan	7
Appendices	
Appendix A	Final construction drawing
Appendix B	Sewage treatment plant pictures

## 1. Introduction

This document presents the Sewage Treatment Plant construction summary report required by the Water Licence 2AM-WTP1826 Part D Item 15. As required by Water Licence Schedule D, this report contains the final design and construction drawings, a summary of construction activities including photographic recorded during and after construction. The as-built drawings, detailed explanation of field decision to reflect any deviations from the original construction drawings/plans and how such deviations may affect performance of engineered structures, a discussion of the mitigation measures implemented during construction and its effectiveness are also presented. There was no blast or water use for the dust emission during the construction of the Sewage Treatment. plant

## 2. Construction Summary

### 2.1 Site location plan

Agnico Eagle is developing the Whale Tail Project in the Kivalliq Region of Nunavut (65°24'25" N, 96°41'50" W). The 99,878-hectare Amaruq property is located on Inuit-owned and federal crown land, approximately 55 km north of the Meadowbank mine. The Meadowbank mine is accessible from Baker Lake, located 70 kilometres to the south.



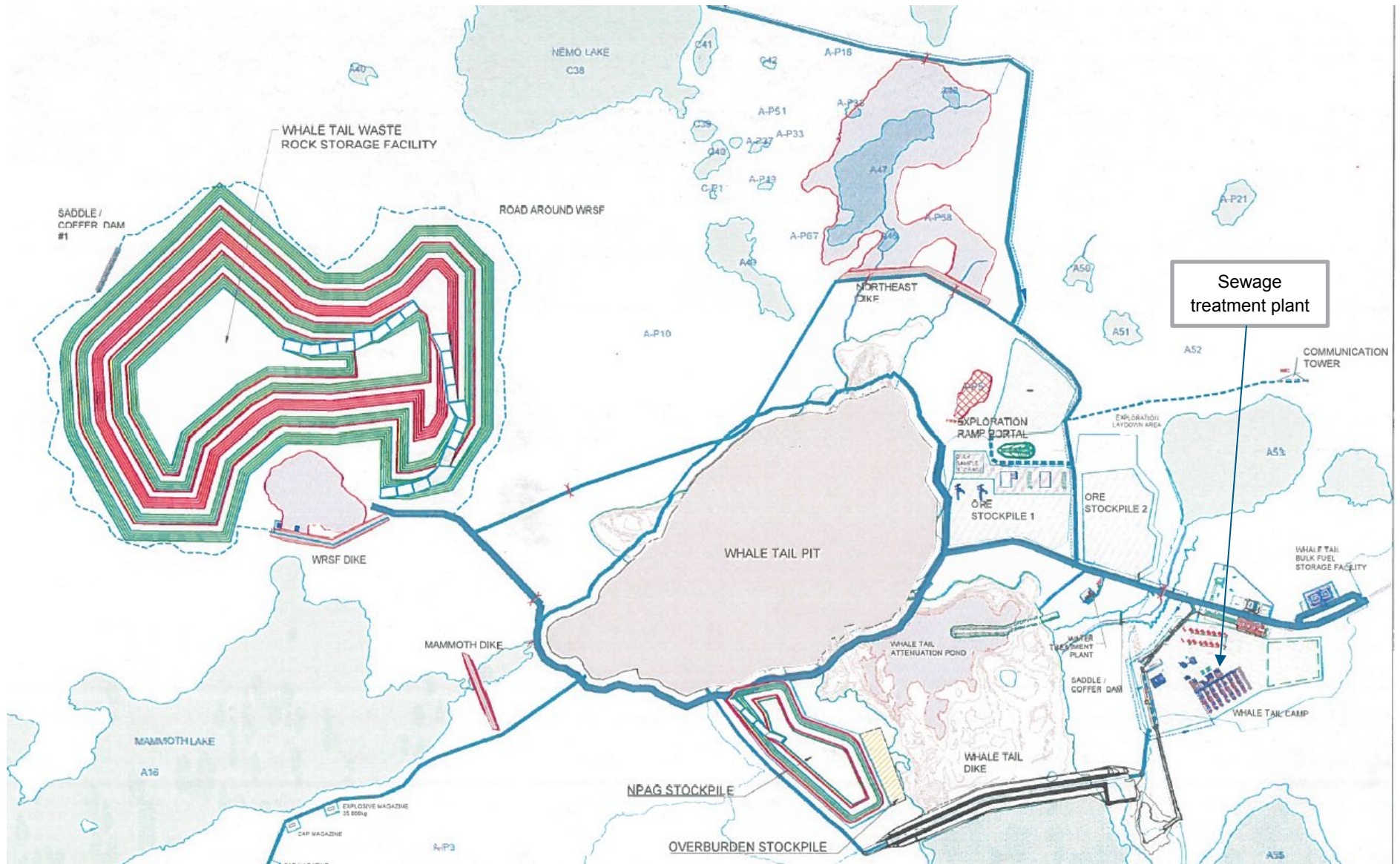


Figure 1: STP location

## 2.2 Equipment

The STP is design for a maximum camp occupation of 400 persons. The water consumption assumed per person is selected at 240 L/day/person. Oil and grease from kitchen are caught mainly inside the camp (abroad the boundary of the STP). No harmful chemicals will be deposited into the sewage network that can affect the process within the STP. The global surface water strategy at Amaruq site is to collect water into the Whale Tail attenuation pond before treatment in the AsWTP and discharge to the environment at Mammoth Lake. Treated water coming from the STP is discharged into the Whale Tail attenuation pond and not directly to the environment.

The STP integrate the following component to successfully treat sewage and respect operational discharge water quality target:

- › Screening step to remove coarse material;
- › Oil and grease removal system;
- › Aerobic bioreactor tank to remove dissolves organic matter;
- › Phosphorus removal step with metallic salt;
- › Nitrification and denitrification steps to remove both ammonia and nitrate;
- › Solid liquid separation step to remove TSS and excess of biomass.

## 2.3 Schedule

Sewage treatment plant was installed between march 18<sup>th</sup> and April 8<sup>th</sup> 2019. Each module was installed on a crushed stone bed using rig mat for foundation. The construction of each module was carried out in 2018 by Newterra before shipment through the barge season in 2018 summer mounts leaving only module disposition and interconnection to be performed on site.

## 2.4 Drawings and photographs

All final design and construction drawings are available in the appendix A, construction pictures are available in appendix B.

# 3. Field decisions

## 3.1 Equipment and controls

Equipment where build in containers and installed without modification on site. Document 653281-0004-40ER-0001\_0 Sewage treatment plant Design Report, present the rational and decisions that leaded to its construction. The same situation prevails for the control system, no modification was performed and the STP is operational as it was designed.

## 3.2 Pipelines

Pipeline from the STP to Whale Tail attenuation pond was built according to plan; no modification was made.

## 4. Mitigation measure

Quarrying activities to build the pad wasn't near fish bearing waters. During the Sewage Treatment Plant construction, no sediment where released in water from construction areas and no water where used to manage dust emissions from construction activity.

## 5. Construction monitoring and inspection test plan

During construction, quality control was carried out to ensure that construction-sensitive features of the design were achieved. Those controls were done by Agnico Eagle following the recommendation from Newterra operations and maintenance manual.

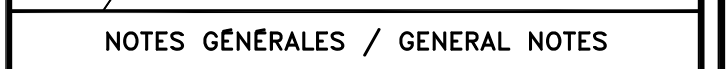
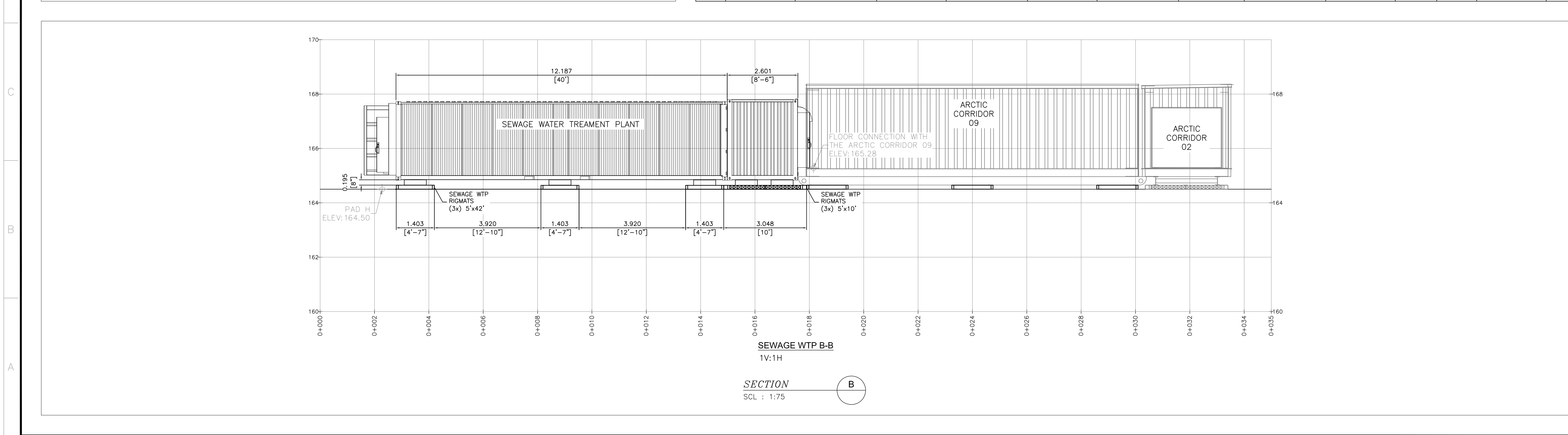
Prior to start up, interconnecting pipes and pipelines (for effluent discharge to Whale Tail attenuation pond) has been tested for leaks at fusion weld and flange joints with treated water. Leaks founded were repaired prior to startup. After startup, an annual inspection, performed by Agnico Eagle personal, will be done to ensure pipeline integrity.

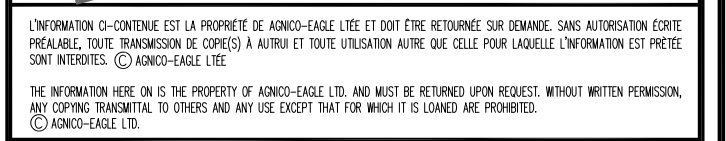
# Appendix A

Final construction drawing







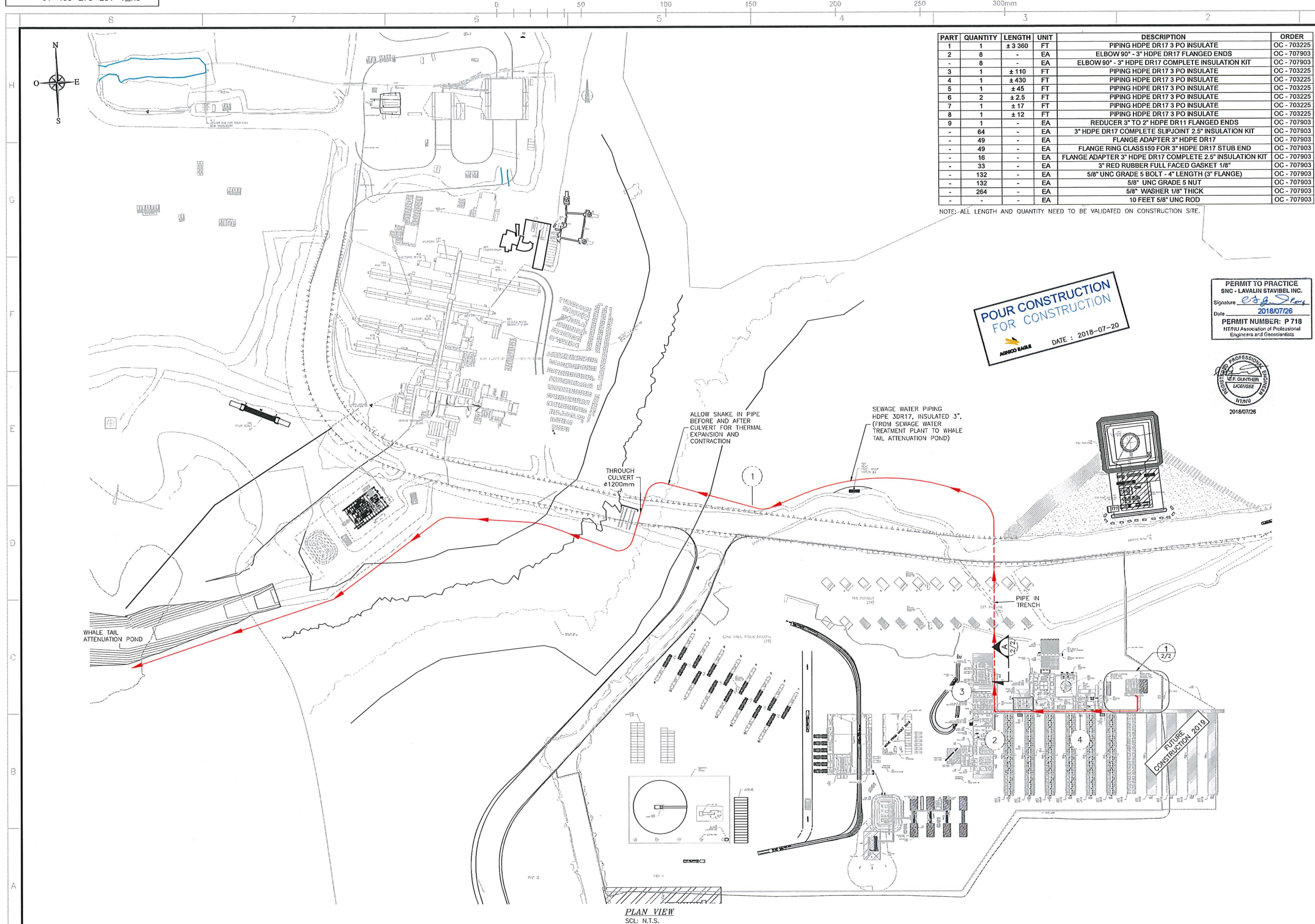
**AGNICO EAGLE**

AMARUQ PROJECT

DESSINE PAR DRAWN BY	L. R. FRENETTE	DATE 2018-11-19
VERIFIÉ PAR CHECKED BY	D. LAFLAMME	2018-11-19
APPROUVE PAR APPROVED BY	D. LAFLAMME	2018-11-19
ÉCHELLE SCALE	AS SHOWN	DATE 2018-11-19

NO. DESSIN DRAWING NO.		61-401-230-003	
NO. PROJET PROJECT NO.		REVISION	FEUILLE / SHT
		0	1 / 1





PART	QUANTITY	LENGTH	UNIT	DESCRIPTION	ORDER
1	1	± 3.360	FT	PIPING HDPE DR17 3 PO INSULATE	OC - 703225
2	8	-	EA	ELBOW 90° - 3" HDPE DR17 FLANGED ENDS	OC - 707903
-	8	-	EA	ELBOW 90° - 3" HDPE DR17 COMPLETE INSULATION KIT	OC - 707903
3	1	± 110	FT	PIPING HDPE DR17 3 PO INSULATE	OC - 703225
4	1	± 430	FT	PIPING HDPE DR17 3 PO INSULATE	OC - 703225
5	1	± 45	FT	PIPING HDPE DR17 3 PO INSULATE	OC - 703225
6	2	± 2.5	FT	PIPING HDPE DR17 3 PO INSULATE	OC - 703225
7	1	± 17	FT	PIPING HDPE DR17 3 PO INSULATE	OC - 703225
8	1	± 12	FT	PIPING HDPE DR17 3 PO INSULATE	OC - 703225
9	1	-	EA	REDUCER 3" TO 2" HDPE DR11 FLANGED ENDS	OC - 707903
-	64	-	EA	3" HDPE DR17 COMPLETE SLIPJOINT 2.5" INSULATION KIT	OC - 707903
-	49	-	EA	FLANGE ADAPTER 3" HDPE DR17	OC - 707903
-	49	-	EA	FLANGE RING CLASS150 FOR 3" HDPE DR17 STUB END	OC - 707903
-	36	-	EA	FLANGE ADAPTER 3" HDPE DR17 COMPLETE 2.5" INSULATION KIT	OC - 707903
-	13	-	EA	3" RED RUBBER FULL FACED GASKET 1/8"	OC - 707903
-	132	-	EA	5/8" UNC GRADE 5 BOLT - 4" LENGTH (3" FLANGE)	OC - 707903
-	132	-	EA	5/8" UNC GRADE 5 NUT	OC - 707903
-	264	-	EA	5/8" WASHER 1/8" THICK	OC - 707903
-	-	-	EA	10 FEET 5/8" UNC ROD	OC - 707903

NOTE: ALL LENGTH AND QUANTITY NEED TO BE VALIDATED ON CONSTRUCTION SITE.

POUR CONSTRUCTION  
FOR CONSTRUCTION

AGRICOL EAGLE

DATE : 2018-07-20

**PERMIT TO PRACTICE  
SNC - LAVALIN STAVIBEL INC.**  
Signature *E. J. G. P. 104*  
Date 2018/07/26  
**PERMIT NUMBER: P 718**  
NTNU Association of Professional  
Engineers and Geoscientists

[illegible]

## NOTES GÉNÉRALES / GENERAL NOTES

1. ALL LENGTH AND QUANTITY NEED TO BE  
VALIDATED ON CONSTRUCTION SITE.

\_\_\_\_\_ PIPING ON GROUND  
 - - - - - PIPING IN TRENCH

THE DESIGN AND MATERIALS ON  
THIS DRAWING ARE ASSUMED BY  
AGNICO EAGLE.

 **SNC • LAVALIN**

SNC-Lavalin Stanbel inc.  
150, rue Gamble Ouest  
Rouyn-Noranda (Québec) J3K 2R7  
Tél.: 819 764-5181 Fax : 819 797-0158  
[www.sncslavalin.com](http://www.sncslavalin.com)

Project #: 644819-0000

DESSINS EN RÉFÉRENCE / REFERENCE DRAWINGS

TITRE / TITLE	# DWG
--	--
--	--
--	--
--	--
--	--



O	2018-07-20	ISSUED FOR CONSTRUCTION	N.B.G.	C.I.G.	K.P.M.
REV.	DATE	DESCRIPTION	PAR/BY	APP.	CLIENT

**REVISIONS**

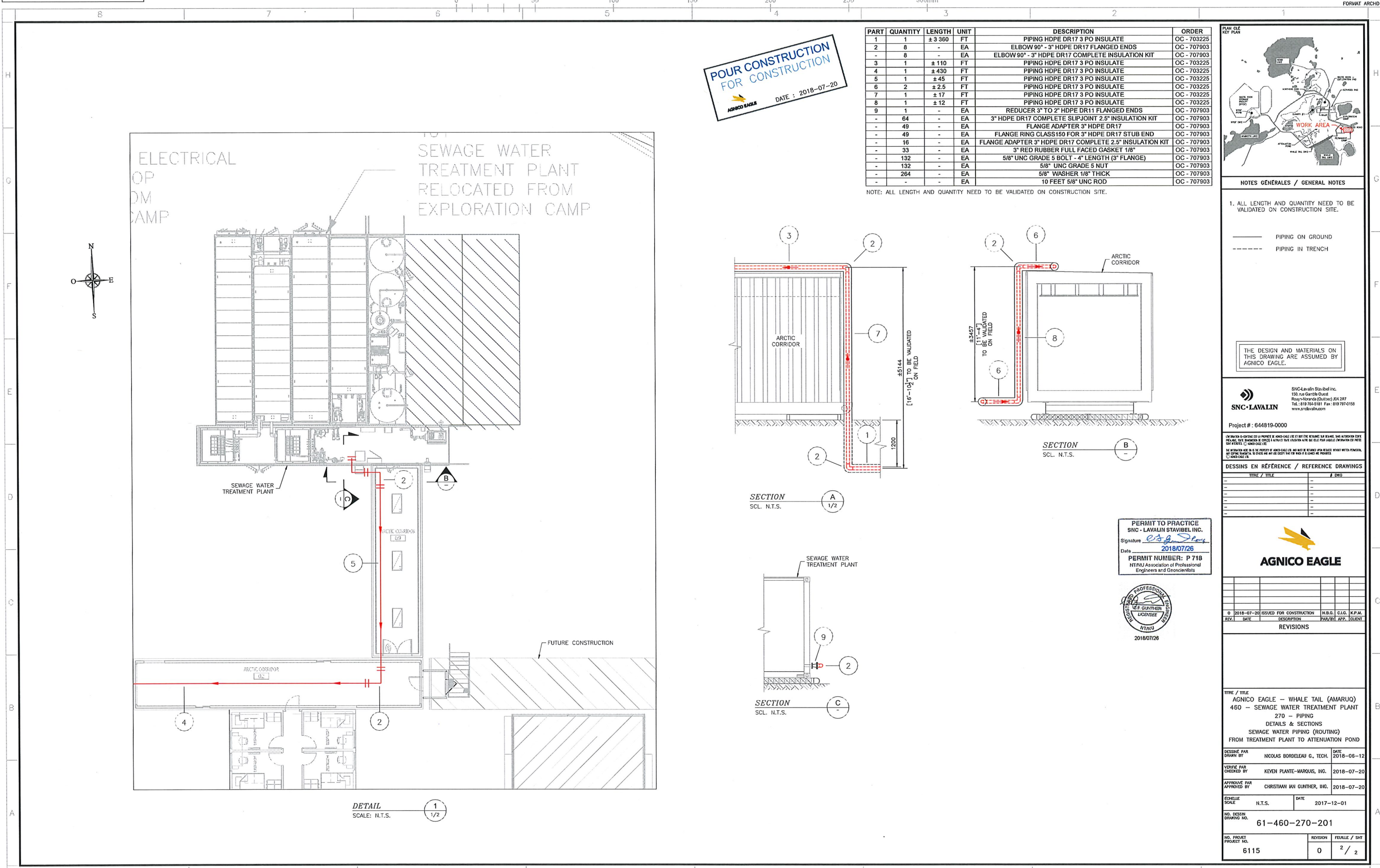
**TITLE / TITLE**  
**AGNICO EAGLE - WHALE TAIL (AMARUQ)**  
**460 - SEWAGE WATER TREATMENT PLANT**  
**270 - PIPING**  
**PLAN VIEW**  
**SEWAGE WATER PIPING (ROUTING)**  
**FROM TREATMENT PLANT TO ATTENUATION POND**

DESIGNED PAR DRAWN BY	NICOLAS BORDELEAU C., TECH.	DATE 2018-06-12
VÉRIFIÉ PAR CHECKED BY	KEYEN PLANTE-MARQUIS, ING.	2018-07-20
APPROUVÉ PAR APPROVED BY	CHRISTIAN VAN GUNTHER, ING.	2018-07-20

ÉCHELLE SCALE	N.T.S.	DATE	2017-12-01
NO. DESSIN DRAWING NO.		61-460-270-201	

NO. PROJET PROJECT NO.	REYSSON	FEUILLE / SHT
6115	0	1 / 2





POUR CONSTRUCTION  
FOR CONSTRUCTION  
AGNICO EAGLE  
DATE : 2018-07-20

PART	QUANTITY	LENGTH	UNIT	DESCRIPTION	ORDER
1	1	± 3 360	FT	PIPING HDPE DR17 3 PO INSULATE	OC - 703225
2	8	-	EA	ELBOW 90° - 3" HDPE DR17 FLANGED ENDS	OC - 707903
-	8	-	EA	ELBOW 90° - 3" HDPE DR17 COMPLETE INSULATION KIT	OC - 707903
3	1	± 110	FT	PIPING HDPE DR17 3 PO INSULATE	OC - 703225
4	1	± 430	FT	PIPING HDPE DR17 3 PO INSULATE	OC - 703225
5	1	± 45	FT	PIPING HDPE DR17 3 PO INSULATE	OC - 703225
6	2	± 2.5	FT	PIPING HDPE DR17 3 PO INSULATE	OC - 703225
7	1	± 17	FT	PIPING HDPE DR17 3 PO INSULATE	OC - 703225
8	1	± 12	FT	PIPING HDPE DR17 3 PO INSULATE	OC - 703225
9	1	-	EA	REDUCER 3" TO 2" HDPE DR11 FLANGED ENDS	OC - 707903
-	64	-	EA	3" HDPE DR17 COMPLETE SLIPJOINT 2.5" INSULATION KIT	OC - 707903
-	49	-	EA	FLANGE ADAPTER 3" HDPE DR17	OC - 707903
-	49	-	EA	FLANGE RING CLASS150 FOR 3" HDPE DR17 STUB END	OC - 707903
-	16	-	EA	FLANGE ADAPTER 3" HDPE DR17 COMPLETE 2.5" INSULATION KIT	OC - 707903
-	33	-	EA	3" RED RUBBER FULL FACED GASKET 1/8"	OC - 707903
-	132	-	EA	5/8" UNC GRADE 5 BOLT - 4" LENGTH (3" FLANGE)	OC - 707903
-	132	-	EA	5/8" UNC GRADE 5 NUT	OC - 707903
-	264	-	EA	5/8" WASHER 1/8" THICK	OC - 707903
-	-	-	EA	10 FEET 5/8" UNC ROD	OC - 707903

NOTE: ALL LENGTH AND QUANTITY NEED TO BE VALIDATED ON CONSTRUCTION SITE.



NOTES GÉNÉRALES / GENERAL NOTES

1. ALL LENGTH AND QUANTITY NEED TO BE VALIDATED ON CONSTRUCTION SITE.

— PIPING ON GROUND  
--- PIPING IN TRENCH

THE DESIGN AND MATERIALS ON THIS DRAWING ARE ASSUMED BY AGNICO EAGLE.

SNC-Lavalin Stabilité Inc.  
150, rue Gamble Ouest  
Rouyn-Noranda (Québec) J8A 2R7  
Tel. : 819 784-5181 Fax : 819 787-0158  
www.snc-lavalin.com

Project # : 644819-0000

UNLESS OTHERWISE SPECIFIED, ALL DIMENSIONS ARE IN METERS (FEET AND INCHES). DIMENSIONS ARE GIVEN IN METERS (FEET AND INCHES) UNLESS OTHERWISE SPECIFIED. DIMENSIONS ARE GIVEN IN METERS (FEET AND INCHES) UNLESS OTHERWISE SPECIFIED. DIMENSIONS ARE GIVEN IN METERS (FEET AND INCHES) UNLESS OTHERWISE SPECIFIED.

NO WARRANTIES ARE MADE BY THE PROJECT OR AGNICO EAGLE FOR THE DESIGN OR MATERIALS. AGNICO EAGLE ASSUMES ALL RESPONSIBILITY FOR THE DESIGN AND MATERIALS. AGNICO EAGLE ASSUMES ALL RESPONSIBILITY FOR THE DESIGN AND MATERIALS. AGNICO EAGLE ASSUMES ALL RESPONSIBILITY FOR THE DESIGN AND MATERIALS.

DESIGNS EN RÉFÉRENCE / REFERENCE DRAWINGS

DATE	TITLE	REV.
-	-	-
-	-	-
-	-	-
-	-	-
-	-	-



REV.	DATE	DESCRIPTION	PAR/APP.	CLIENT
0	2018-07-20	ISSUED FOR CONSTRUCTION	N.B.S. C.J.G. K.P.M.	-

REVISIONS

REV.	DATE	DESCRIPTION	PAR/APP.	CLIENT
0	2018-07-20	ISSUED FOR CONSTRUCTION	N.B.S. C.J.G. K.P.M.	-

TITLE / TITRE  
AGNICO EAGLE - WHALE TAIL (AMARUQ)  
460 - SEWAGE WATER TREATMENT PLANT  
270 - PIPING  
DETAILS & SECTIONS  
SEWAGE WATER PIPING (ROUTING)  
FROM TREATMENT PLANT TO ATTENUATION POND

DESIGNED BY	NICOLAS BORDELEAU G., TECH.	DATE	2018-06-12
CHECKED BY	KEVIN PLANTE-MARQUIS, ING.	DATE	2018-07-20
APPROVED BY	CHRISTIAN VAN GUNTHER, ING.	DATE	2018-07-20

ECHELLE / SCALE  
N.T.S.  
DATE  
2017-12-01

NO. DESSIN / DRAWING NO.  
61-460-270-201

NO. PROJET / PROJECT NO.	REVISION	FEUILLE / SHEET
6115	0	2 / 2

BUILDING 7901

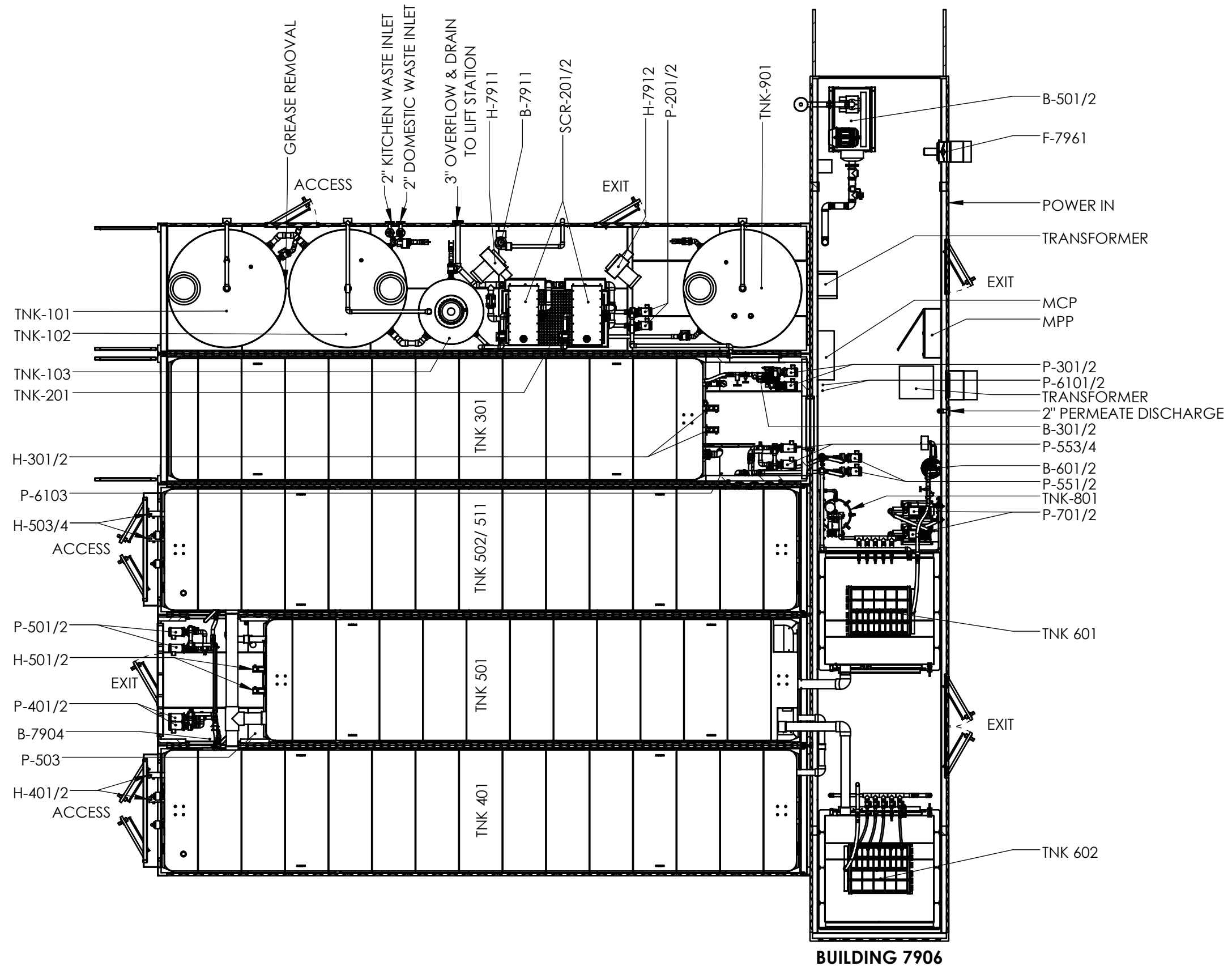
BUILDING 7902

BUILDING 7903

BUILDING 7904

BUILDING 7905

BUILDING 7906

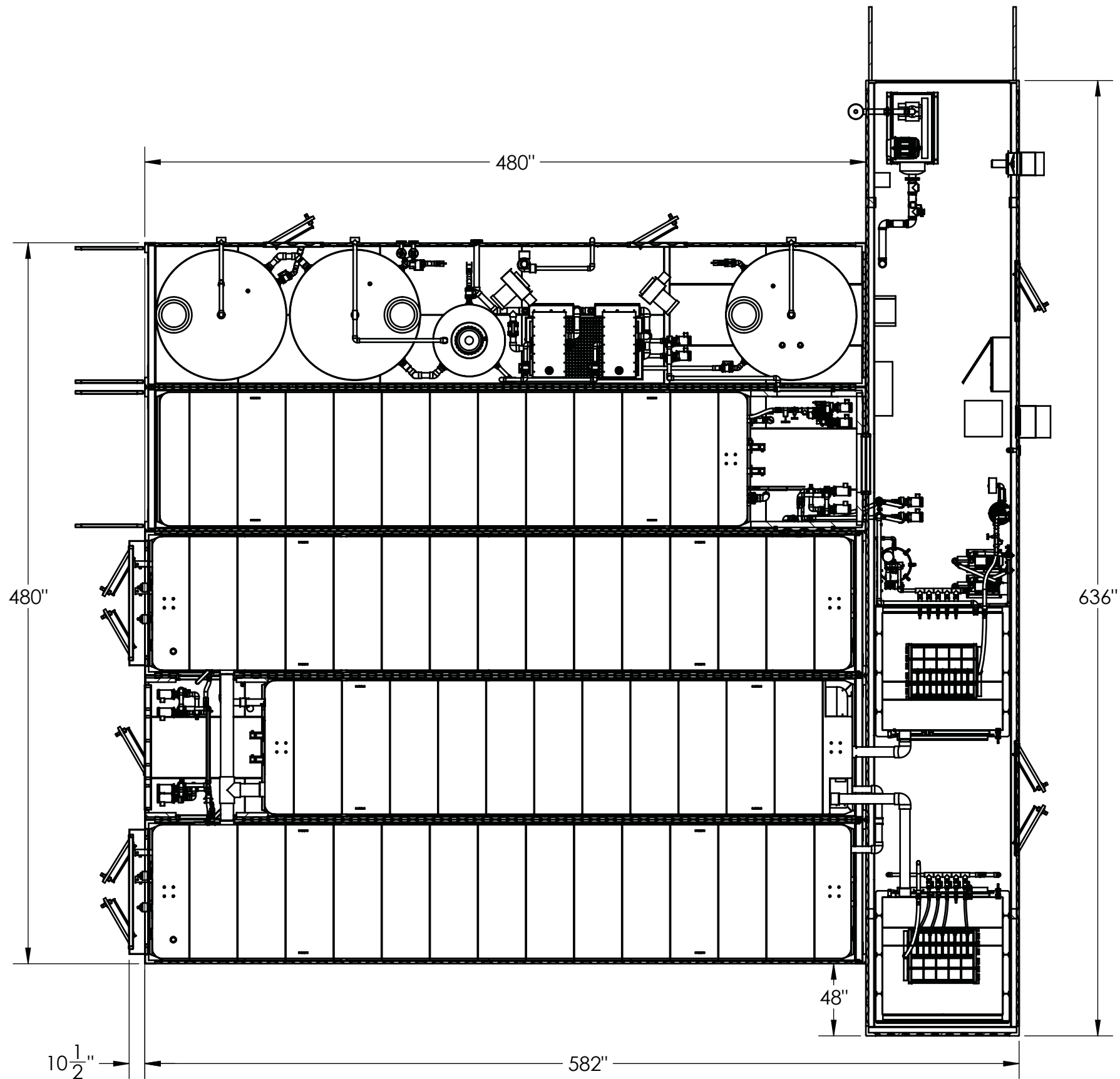


GENERAL TOLERANCES  
.XX ± 1/8"  
.XXX ± 1/16"  
UNLESS OTHERWISE SPECIFIED  
DIMENSIONS ARE IN INCHES  
THIS INFORMATION IS THE PROPERTY OF newterra  
AND CANNOT BE REUSED OR REPRODUCED WITHOUT  
WRITTEN CONSENT.

LEVEL	DATE	BY	REVISION
C1	11/08/17	AH	AS BUILT
B1	07/06/17	GH	FOR PRODUCTION
B	06/06/17	GH	FOR PRODUCTION
A2	25/05/17	GH	REVISED LAYOUT
A	19/05/17	GH	FOR REVIEW

DWG. NO:	PROJECT NUMBER:
TITLE:	1704432
CUSTOMER:	DRAWN BY:
AGNICO EAGLE	GH
	DATE:
	19/05/17
	SHEET 1 OF 4





GENERAL TOLERANCES

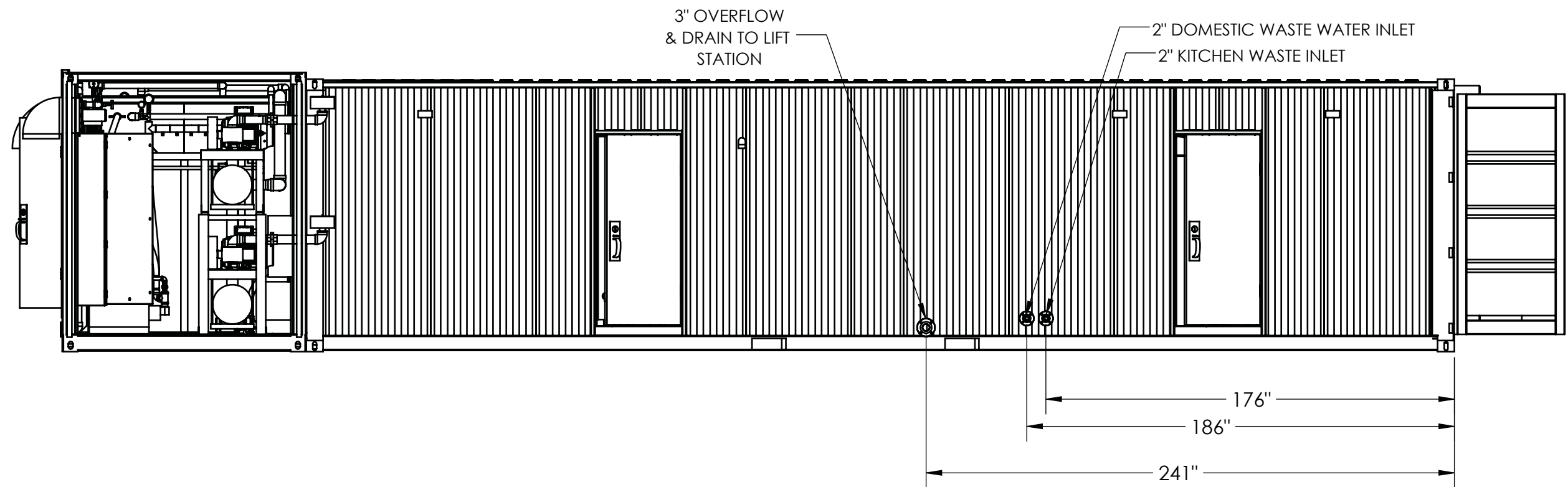
.XX  $\pm \frac{1}{8}$ "  
.XXX  $\pm \frac{1}{16}$ "

UNLESS OTHERWISE SPECIFIED  
DIMENSIONS ARE IN INCHES

THIS INFORMATION IS THE PROPERTY OF newterra  
AND CANNOT BE REUSED OR REPRODUCED WITHOUT  
WRITTEN CONSENT.

LEVEL	DATE	BY	REVISION
C1	11/08/17	AH	AS BUILT
B1	07/06/17	GH	FOR PRODUCTION
B	06/06/17	GH	FOR PRODUCTION
A2	25/05/17	GH	REVISED LAYOUT
A	19/05/17	GH	FOR REVIEW

DWG. NO:	PROJECT NUMBER:
TITLE:	1704432
CUSTOMER:	DRAWN BY:
AGNICO EAGLE	GH
	DATE:
	19/05/17
	SHEET 2 OF 4

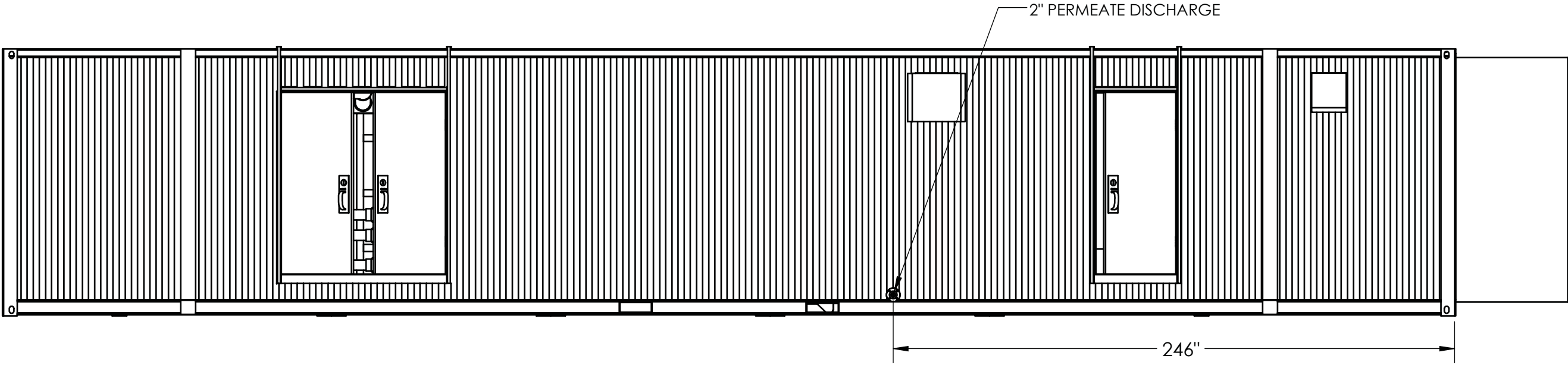



GENERAL TOLERANCES  
.XX  $\pm \frac{1}{8}$ "  
.XXX  $\pm \frac{1}{16}$ "  
UNLESS OTHERWISE SPECIFIED  
DIMENSIONS ARE IN INCHES

THIS INFORMATION IS THE PROPERTY OF newterra  
AND CANNOT BE REUSED OR REPRODUCED WITHOUT  
WRITTEN CONSENT.

LEVEL	DATE	BY	REVISION
C1	11/08/17	AH	AS BUILT
B1	07/06/17	GH	FOR PRODUCTION
B	06/08/2017	GH	FOR PRODUCTION

DWG. NO:	PROJECT NUMBER:
TITLE:	1704432
CUSTOMER:	DRAWN BY:
AGNICO EAGLE	GH
	DATE:
	06/06/17
	SHEET 3 OF 4





**newterra**

GENERAL TOLERANCES  
.XX ± 1/8"  
.XXX ± 1/16"  
UNLESS OTHERWISE SPECIFIED  
DIMENSIONS ARE IN INCHES

THIS INFORMATION IS THE PROPERTY OF newterra  
AND CANNOT BE REUSED OR REPRODUCED WITHOUT  
WRITTEN CONSENT.

C1	11/08/17	AH	AS BUILT		
B1	07/06/17	GH	FOR PRODUCTION		
B	06/08/2017	GH	FOR PRODUCTION		
LEVEL	DATE	BY	REVISION		

DWG. NO:	PROJECT NUMBER:
TITLE:	1704432
CUSTOMER:	DRAWN BY:
	GH
	DATE:
	06/06/17
	SHEET 4 OF 4

INDEECO  
TAG = H-7911,  
FLOWRATE & PRESSURE = N/A  
HORSEPOWER = 10000 W  
VOLTAGE & PHASE = 480V 3P  
FULL-LOAD AMPS =

INDEECO  
TAG = H-7912  
FLOWRATE & PRESSURE = N/A  
HORSEPOWER = 15000 W  
VOLTAGE & PHASE = 480V 3P  
FULL-LOAD AMPS =

SCR 50  
TAG = SCR-201 / 202  
FLOWRATE & PRESSURE = 50 GPM Max  
HORSEPOWER = 0.25 HP  
VOLTAGE & PHASE = 480V 3P  
FULL-LOAD AMPS =

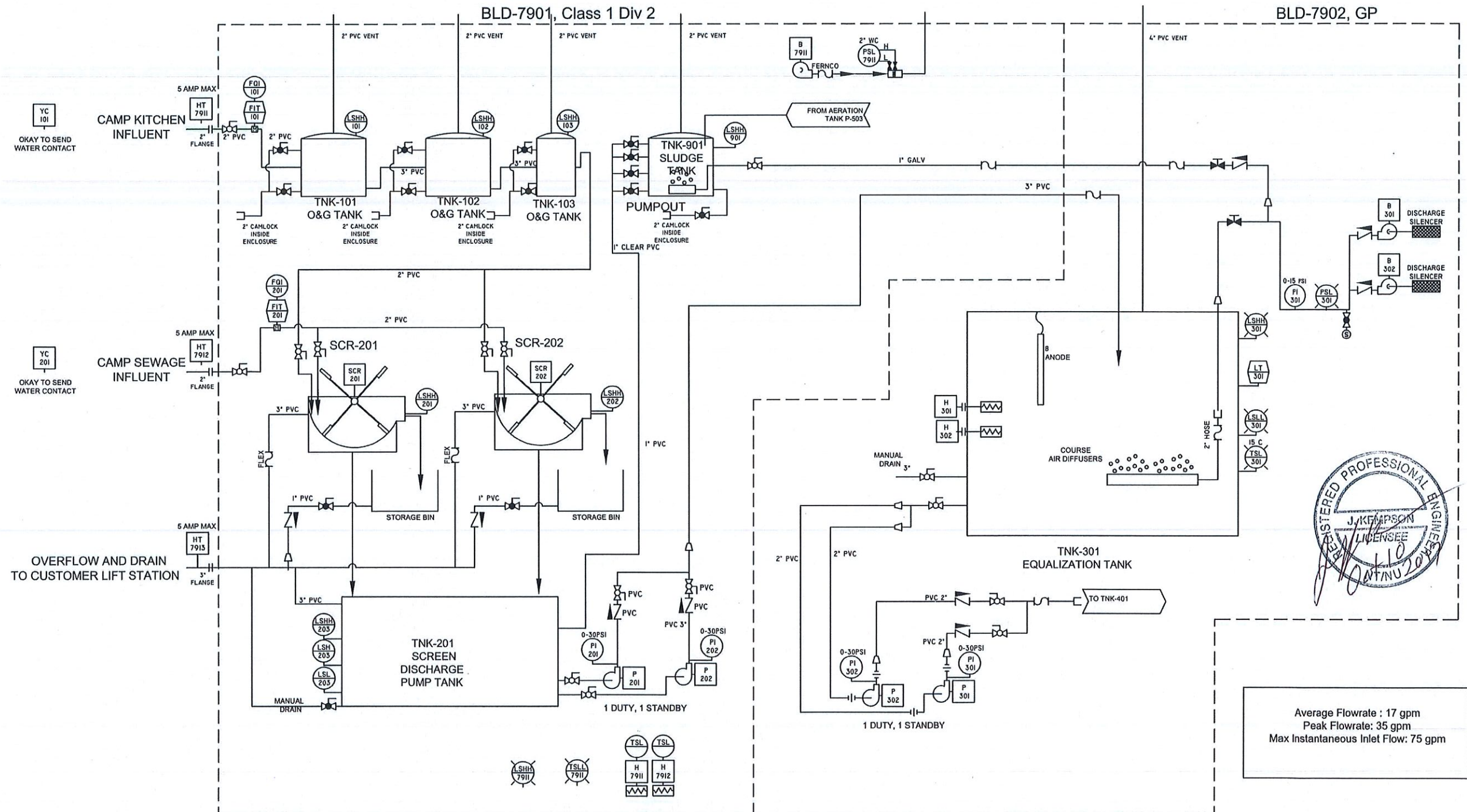
PRICE RC200  
TAG = P-201, P-202  
FLOWRATE & PRESSURE = 95 GPM 15"TDH  
HORSEPOWER = 1 HP  
VOLTAGE & PHASE = 480V, 3 PH, TEFC, CL 1 Div 2  
FULL-LOAD AMPS =

CINCINNATI LM-4  
TAG = B-7911  
FLOWRATE & PRESSURE = 170 CFM @ 1/2"WC  
HORSEPOWER = 0.5 HP  
VOLTAGE & PHASE = 115V 1P PH EXP  
FULL-LOAD AMPS = 0.8 A

PRICE PUMPS RC-200  
TAG = P-301, P-302  
FLOWRATE & PRESSURE = 50 GPM @ 20 FT  
HORSEPOWER = 3/4HP  
VOLTAGE & PHASE = 480V, 3 PH, TEFC, CL 1 Div 2  
FULL-LOAD AMPS =

ELMO 2BH7420  
TAG = B-301/302  
FLOWRATE & PRESSURE = 40 CFM @ 4 PSI  
HORSEPOWER = 2.4  
VOLTAGE & PHASE = 480V, 3 PH,  
FULL-LOAD AMPS = 4.4A

CALORITEC CKFT306F347  
TAG = H-301, H-302  
FLOWRATE & PRESSURE = N/A  
HORSEPOWER = 6000 W  
VOLTAGE & PHASE = 480V, 3 PH  
FULL-LOAD AMPS = 10.4 A



Average Flowrate : 17 gpm  
Peak Flowrate: 35 gpm  
Max Instantaneous Inlet Flow: 75 gpm

NOTES  
IS INPUT WIRING TO BE WIRED FOR OUTDOORS,  
ACCORDING CEC FOR HAZARDOUS LOCATIONS.  
WIRING TO BE CLASS I DIVISION 2, AS PER THE  
CEC.



PHONE:  
(800) 420-4056  
www.newterra.com

D	T-401 MIX PIPE SIZE	10/10/17	JJK
C	AS-BUILT	13/08/17	JJK
B	PRODUCTION	06/06/17	JJK
A2	SUBMITTAL REVISIONS	26/05/17	JJK
A	SUBMITTAL	23/05/17	JJK
LEVEL	REVISION	DATE (mm/dd/yy)	BY

PROJECT NUMBER	1704432
TITLE AND LOCATION	P&ID AMARUQ MINE

CUSTOMER	AGNICO EAGLE MINE
DRAWN BY	MH
DATE	
SHEET	1
TOTAL SHEETS	4



PRICE PUMPS RC-200  
TAG = P-401, 402  
FLOWRATE & PRESSURE = 300 GPM @ 60 FT  
HORSEPOWER = 5HP  
VOLTAGE & PHASE = 480V, 3 PH, TEFC, CL 1 Div 2  
FULL-LOAD AMPS =

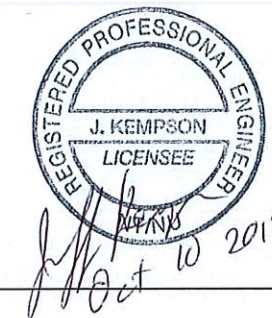
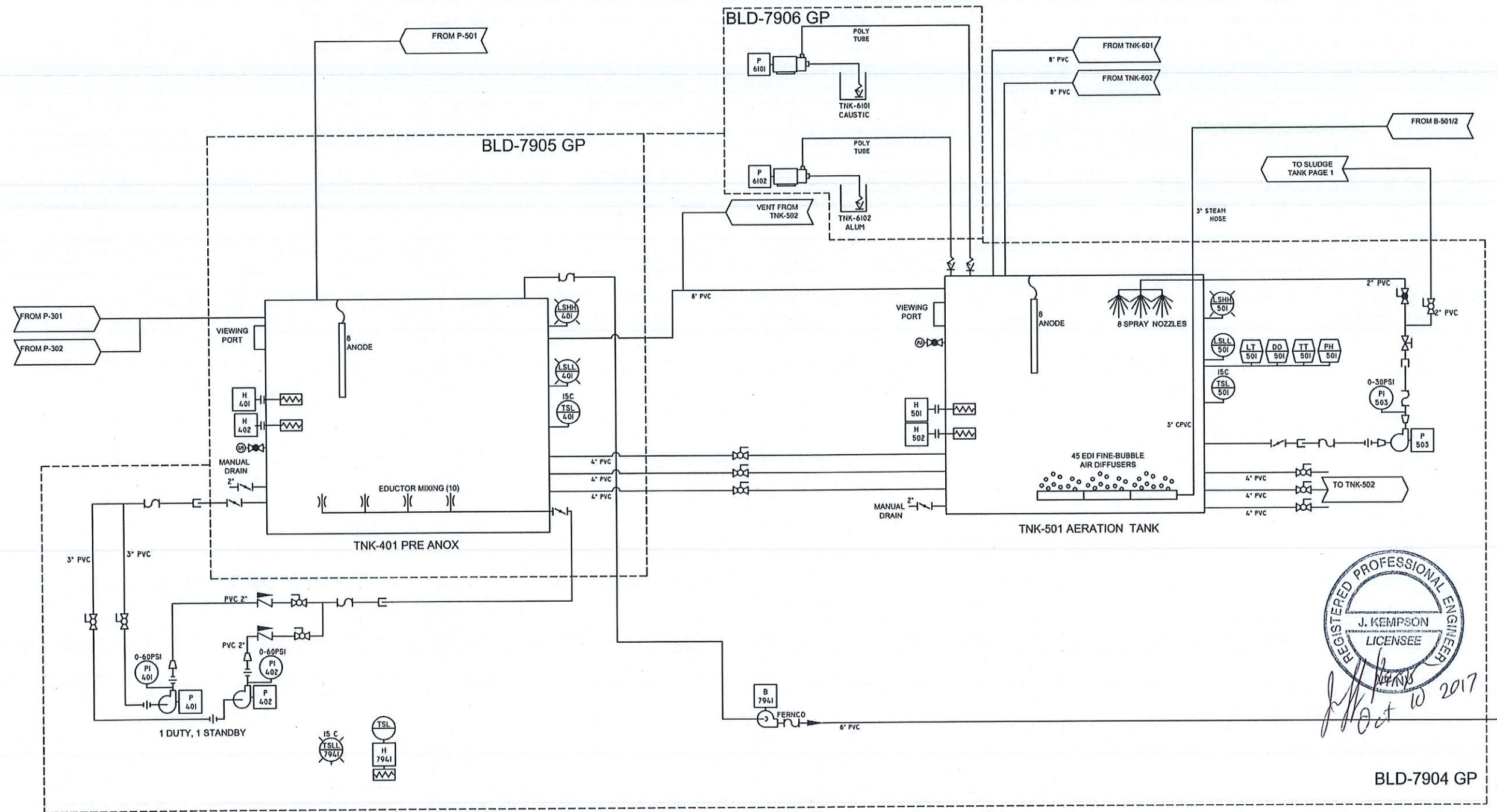
CALORITEC CXFT306F347R83  
TAG = H-401, 402, 501, 502  
FLOWRATE & PRESSURE = N/A  
HORSEPOWER = 6000 W  
VOLTAGE & PHASE = 480V, 3 PH  
FULL-LOAD AMPS = 10.4 A

CINCINNATI LM6  
TAG = B-794I  
FLOWRATE & PRESSURE = 700 CFM @ 2" WC  
HORSEPOWER = 1.5 HP  
VOLTAGE & PHASE = 480V 3P PH  
FULL-LOAD AMPS =

OUELLET OAC04808BL  
TAG = H-794I  
FLOWRATE & PRESSURE = N/A  
HORSEPOWER = 4800 W  
VOLTAGE & PHASE = 480 V, 1 PH  
FULL-LOAD AMPS = 8.34

PRICE PUMPS RC-200  
TAG = P-503  
FLOWRATE & PRESSURE = 50 GPM @ 10 FT  
HORSEPOWER = 1/4 HP  
VOLTAGE & PHASE = 480V, 3 PH, TEFC, CL 1 Div 2  
FULL-LOAD AMPS =

PROMINENT BETA 4  
TAG = P-6101, 6102  
FLOWRATE & PRESSURE = 3.2 GPH @ 58PSI  
HORSEPOWER = N/A  
VOLTAGE & PHASE = 120 V, 1 PH  
FULL-LOAD AMPS = N/A



BLD-7904 GP

NOTES



PHONE:  
(800) 420-4056  
www.newterra.com

D	T-401 MIX PIPE SIZE	10/10/17	JJK
C	AS-BUILT	13/08/17	JJK
B	PRODUCTION	06/06/17	JJK
A2	SUBMITTAL REVISIONS	26/05/17	JJK
A	SUBMITTAL	23/05/17	JJK
LEVEL	REVISION	DATE (mm/dd/yyyy)	BY

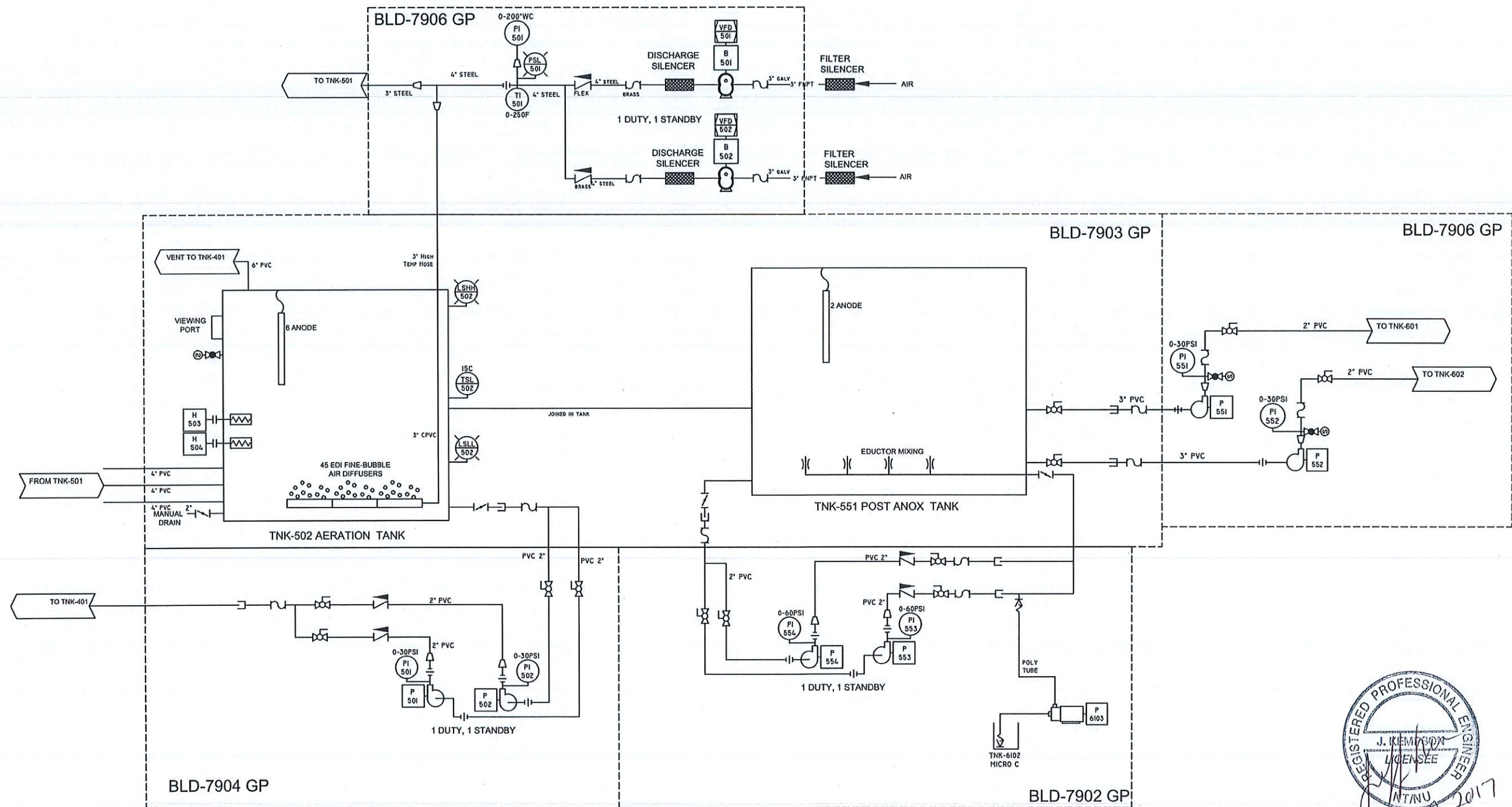
PROJECT NUMBER	1704432
TITLE AND LOCATION	P&ID AMARUQ MINE

CUSTOMER	AGNICO EAGLE MINE
DRAWN BY	MH
DATE	
SHEET	2
SHEETS	4

THIS INFORMATION IS THE PROPERTY OF newterra AND CANNOT BE REUSED OR REPRODUCED WITHOUT THE WRITTEN CONSENT OF newterra



<p>SUTORBILT 4L TAG = B-501,B-502 FLOWRATE &amp; PRESSURE = 487CFM @ 4.4 PSI HORSEPOWER = 15 VOLTAGE &amp; PHASE = 480V, 3 PH, TEFC FULL-LOAD AMPS =</p>	<p>PRICE PUMPS RC-300 TAG = P-501, P-502 FLOWRATE &amp; PRESSURE = 140GPM @ 20' HORSEPOWER = 2 HP VOLTAGE &amp; PHASE = 480 V, 3 PH FULL-LOAD AMPS =</p>	<p>PROMINENT BETA 4 TAG = P-6103 FLOWRATE &amp; PRESSURE = 3.2 GPM @ 50PSI HORSEPOWER = N/A VOLTAGE &amp; PHASE = 120 V, 1 PH FULL-LOAD AMPS = N/A</p>	<p>CALORITEC CXFT306F347R83 TAG = H-503,504 FLOWRATE &amp; PRESSURE = N/A HORSEPOWER = 6000 W VOLTAGE &amp; PHASE = 480V, 3 PH FULL-LOAD AMPS = 10.4 A</p>	<p>PRICE PUMPS RC-300 TAG = P-553, 554 FLOWRATE &amp; PRESSURE = 50GPM @ 55' HORSEPOWER = 3 HP VOLTAGE &amp; PHASE = 480 V, 3 PH FULL-LOAD AMPS =</p>	<p>PRICE PUMPS RC-200 TAG = P-551, 552 FLOWRATE &amp; PRESSURE = 60GPM @ 20' HORSEPOWER = 3/4 HP VOLTAGE &amp; PHASE = 480 V, 3 PH FULL-LOAD AMPS =</p>
--	--	--	--	---	---



REGISTERED PROFESSIONAL ENGINEER  
J. KEMPTON  
LICENSEE  
INT/NU  
Oct 10 2017

NOTES



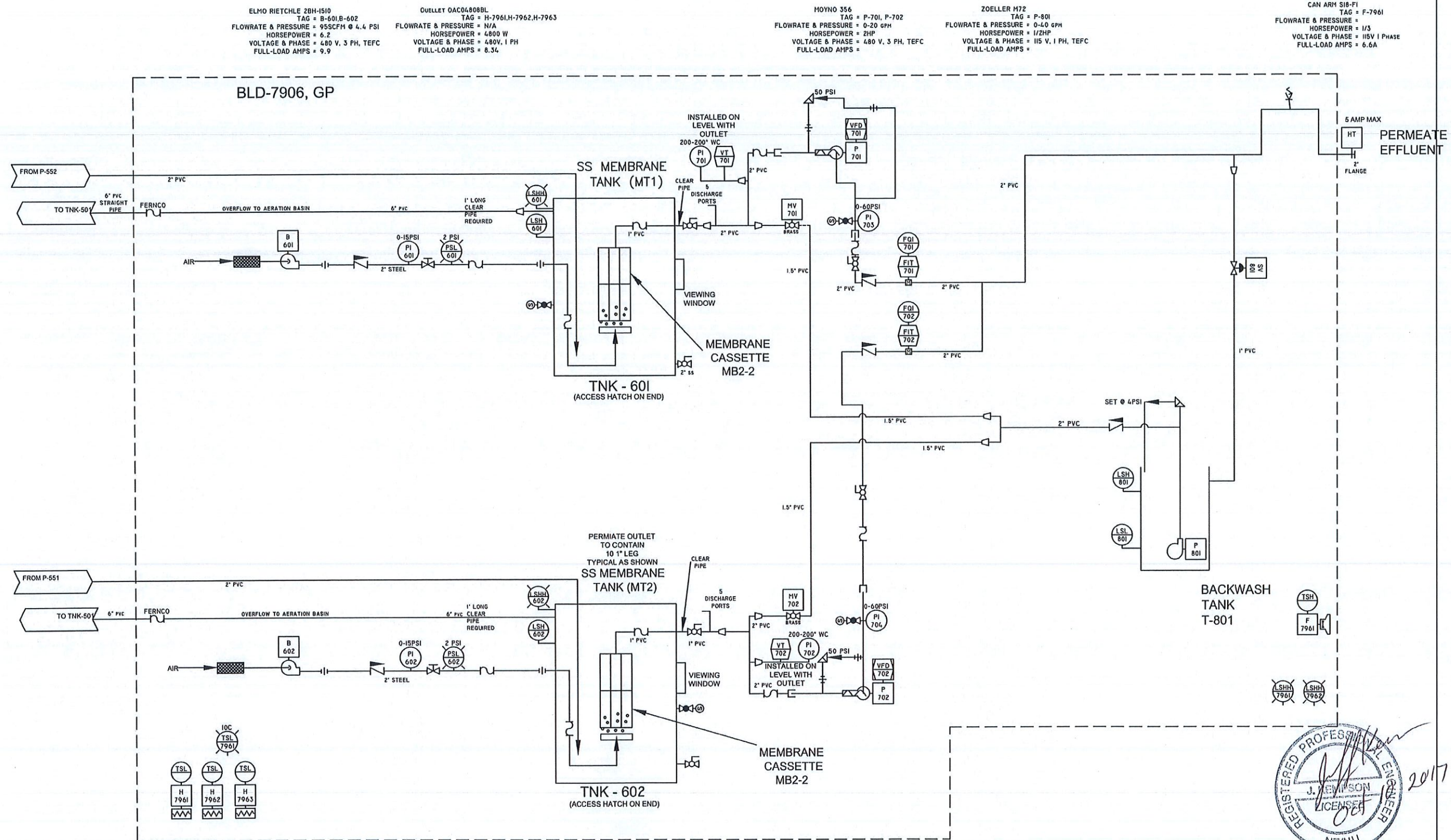
PHONE:  
(800) 420-4056  
www.newterra.com

D	T-401 MIX PIPE SIZE	10/10/17	JJK
C	AS-BUILT	13/08/17	JJK
B	PRODUCTION	06/08/17	JJK
A2	SUBMITTAL REVISIONS	26/05/17	JJK
A	SUBMITTAL	23/05/17	JJK
LEVEL	REVISION	DATE (mm/dd/yy)	BY

PROJECT NUMBER  
1704432  
TITLE AND LOCATION  
P&ID  
AMARUQ MINE

CUSTOMER  
AGNICO EAGLE  
MINE  
DRAWN BY  
MH  
DATE  
SHEET 3 OF 4





REGISTERED PROFESSIONAL ENGINEER  
 J. J. J.  
 LICENSE NO. 7961  
 N/AU

NOTES

  
newterra

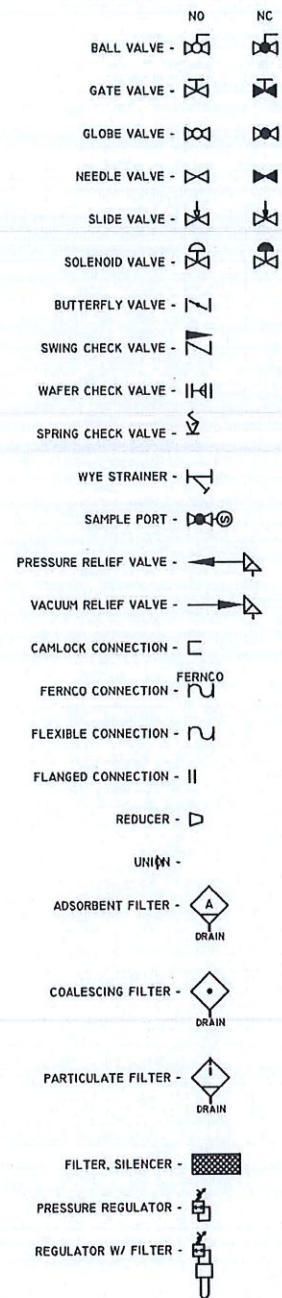
PHONE:  
(800) 420-4056  
  
www.newterra.com

D	T-401 MIX PIPE SIZE	10/10/17	JJK
C	AS-BUILT	13/08/17	JJK
B	PRODUCTION	06/06/17	JJK
A2	SUBMITTAL REVISIONS	26/05/17	JJK
A	SUBMITTAL	23/05/17	JJK
LEVEL	REVISION	DATE (mm/dd/yy)	BY

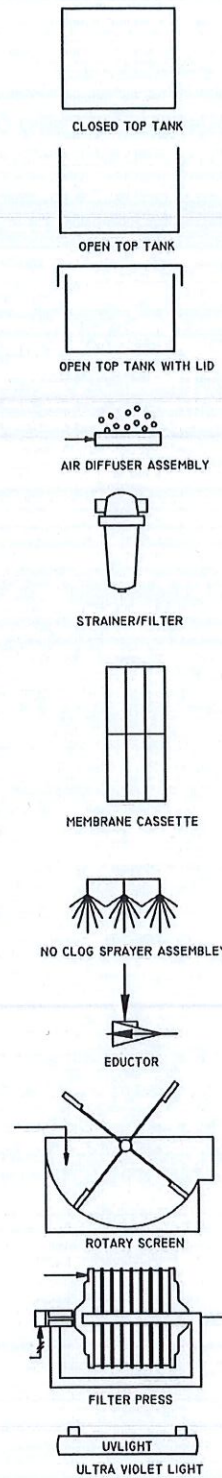
PROJECT NUMBER		1704432
TITLE AND LOCATION		P&ID AMARUQ MINE
CUSTOMER	AGNICO EAGLE MINE	
DRAWN BY	DATE	SHEET SHEETS
MH		4 4



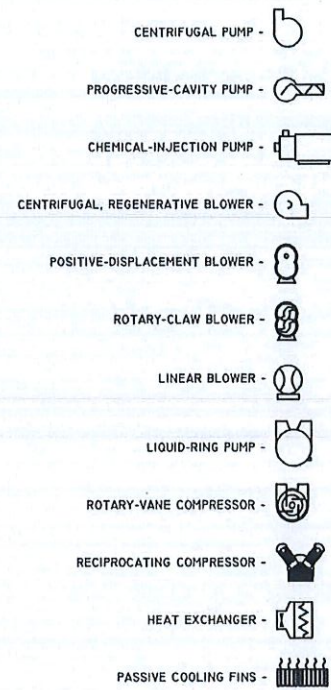
# VALVES AND PIPING



# EQUIPMENT



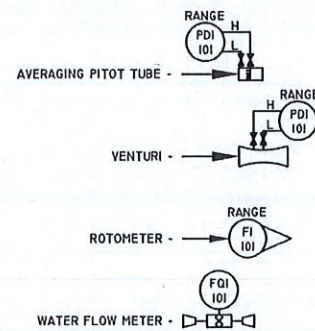
# EQUIPMENT



# EQUIPMENT

AV - ACTUATED VALVE  
B - BLOWER  
F - FAN  
H - HEATER  
MBR - MEMBRANE BIOLOGICAL REACTOR  
MV - MODULATED VALVE  
P - PUMP  
SV - SOLENOID VALVE  
TK - TANK  
UV - ULTRA VIOLET LIGHT  
VFD - VARIABLE FREQUENCY DRIVE

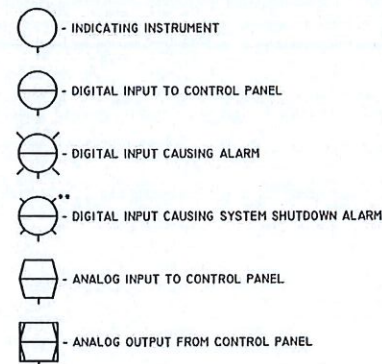
# FLOW MEASUREMENT



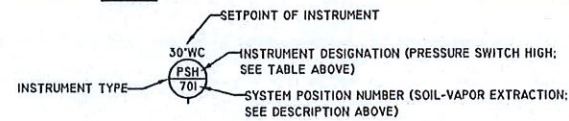
# INSTRUMENT DESIGNATION

INPUT	1st MODIFIER	2nd MODIFIER	3rd MODIFIER	OUTPUT	1st MODIFIER	A
CYCLE					BLOWER	B
					COMPRESSOR	C
					AIR DRYER	D
						E
FLOW					FAN	F
GAS (LEL)		GAUGE			HEATER	H
CURRENT		INDICATOR	HIGH	HAND		I
						J
LEVEL			LOW			K
				MOTORIZED		L
						M
						N
						O
PRESSURE				PNEUMATIC	PUMP	P
	QUANTITY					Q
						R
SPEED		SWITCH				S
TEMPERATURE		TRANSMITTER		SOLENOID		T
						U
					VALVE	V
						W
						X
						Y
POSITION						Z

# INSTRUMENT IDENTIFICATION



# EXAMPLE



# SYSTEM POSITION DESIGNATION

1000 - LIFT STATION  
2000 - INLET SCREEN  
3000 - EQUALIZATION TANK  
4901 - SCREEN DISCHARGE PUMP TANK  
5000 - AERATION TANK  
5500 - SLUDGE HOLDING TANK  
6000 - MBR TANK  
6100 - CHEMICAL INJECTION  
7000 - PERMEATE  
7500 - UV LIGHT  
7900 - BUILDING, TRAILER OR SKID  
8000 - DISCHARGE TANK  
8200 - CONTROL PANEL  
8300 - TELEMETRY  
9900 - EXTRAS



NOTES		PHONE: (800) 420-4056  www.newterra.com	D	T-401 MIX PIPE SIZE	10/10/17	JJK	PROJECT NUMBER  1704432	CUSTOMER  AGNICO EAGLE MINE
			C	AS-BUILT	13/08/17	JJK		
			B	PRODUCTION	06/06/17	JJK	TITLE AND LOCATION  P&ID AMARUQ MINE	DRAWN BY MH
			A2	SUBMITTAL REVISIONS	26/05/17	JJK		
			A	SUBMITTAL	23/05/17	JJK		
			LEVEL	REVISION	DATE (mm/dd/yy)	BY		SHEET 4



# Appendix B

Sewage treatment plant pictures





STP – Modules transportation





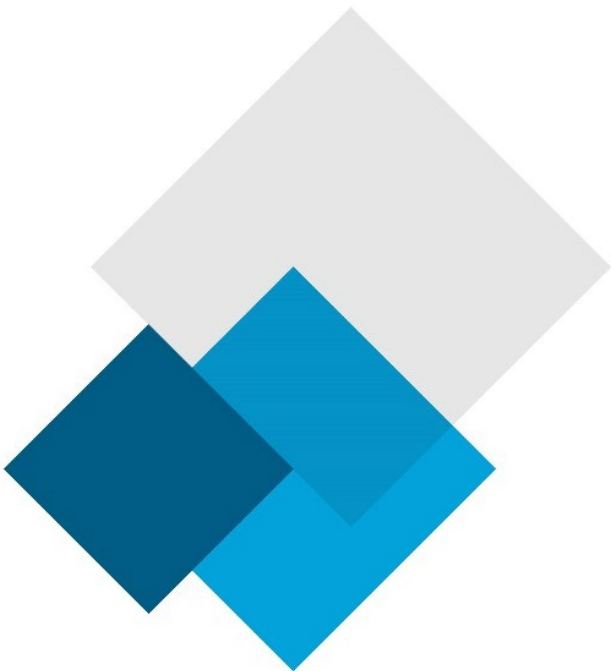
STP – General Construction Site







STP – Modules installation 1 of 2





STP – Modules installation 2 of 2







STP – Final installation

