

AGNICO EAGLE

WHALE TAIL MINE

WRSF INSTRUMENTATION DESIGN

CONCEPTUAL DRAWINGS

DRAWING INDEX

DRAWING #	DESCRIPTION
948-011-000	DRAWING INDEX, COVER SHEET AND LOCALLITY MAP
948-011-001	WRSF GENERAL ARRANGEMENT
948-011-002	WASTE ROCK STORAGE FACILITY PRIMARY MONITORING STATION DETAILS
948-011-003	WASTE ROCK STORAGE FACILTY SECONDARY MONITORING STATION DETAILS
948-011-004	IVR GENERAL ARRANGEMENT
948-011-005	IVR MONITORING

LOCALITY PLAN:



AERIAL IMAGERY: GOOGLE EARTH 2018
NOT TO SCALE

PREPARED BY:



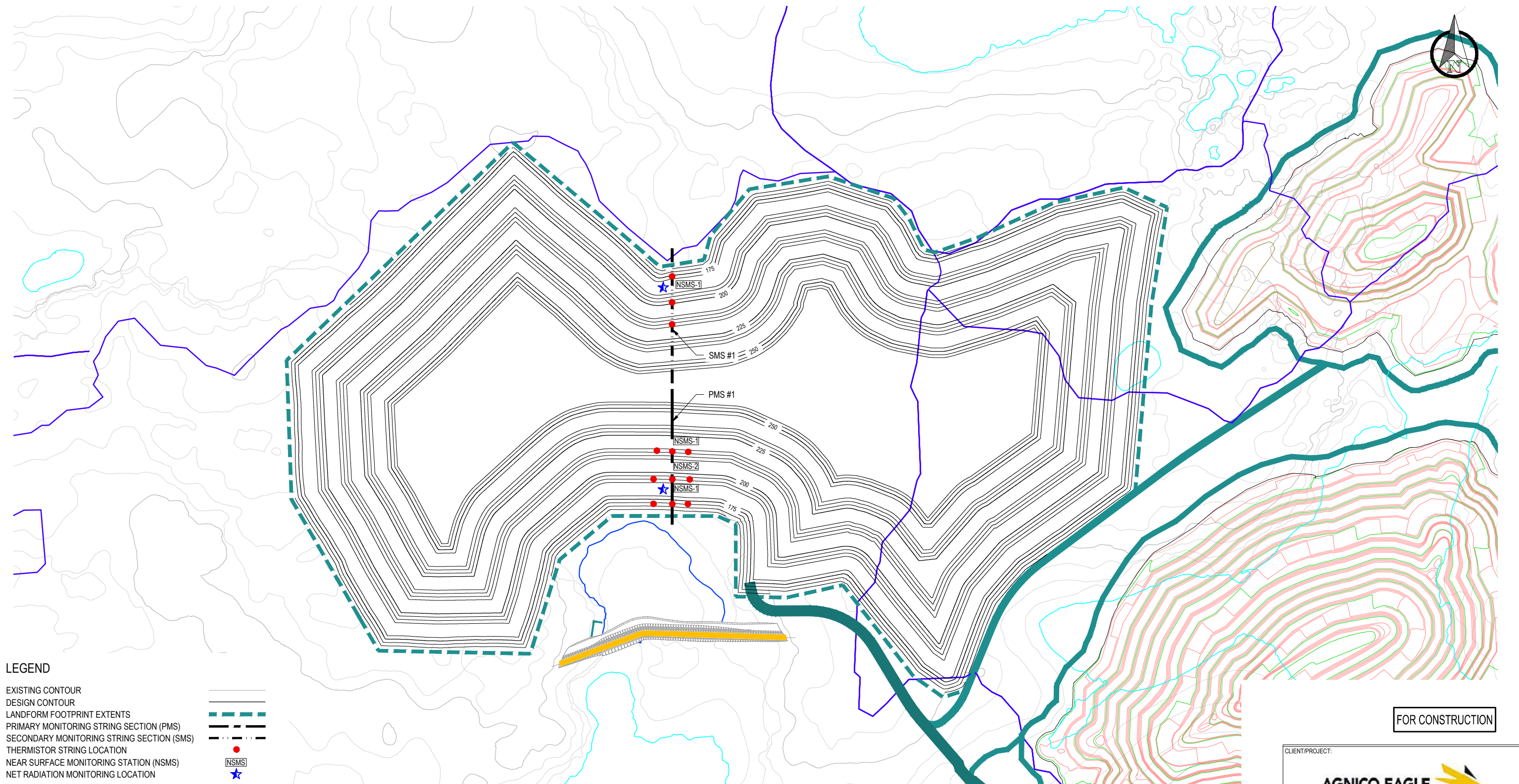
**O'Kane
Consultants Pty Ltd.**

*Integrated Mine Waste Management and Closure Services
Specialists in Geochemistry and Unsaturated Zone Hydrology*

PROVIDED FOR:

AGNICO EAGLE





LEGEND

- EXISTING CONTOUR
- DESIGN CONTOUR
- LANDFORM FOOTPRINT EXTENTS
- PRIMARY MONITORING STRING SECTION (PMS)
- SECONDARY MONITORING STRING SECTION (SMS)
- THERMISTOR STRING LOCATION
- NEAR SURFACE MONITORING STATION (NSMS)
- NET RADIATION MONITORING LOCATION

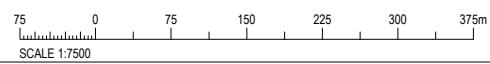
NOTE

- ALL UNITS IN METRES U.N.O.
- ALL TOPOGRAPHY PROVIDED BY AGNICO EAGLE.
- REFER TO DWG. 948-011-002 FOR WRSF MONITORING SECTION DETAILS.
- REFER TO DWG. 948-011-003 FOR TYPICAL THERMISTOR DETAILS.
- FINAL LOCATION AND CONFIGURATION IS SUBJECT TO CHANGE WITH APPROVAL BY THE ENGINEER.

PERMIT TO PRACTICE
M. A. O'KANE CONSULTANTS INC.
Signature: *[Signature]*
Date: *April 30, 2020*
PERMIT NUMBER: P 768
NT/NU Association of Professional Engineers and Geoscientists



WHALE TAIL WRSF GENERAL ARRANGEMENT
1:7500



FOR CONSTRUCTION

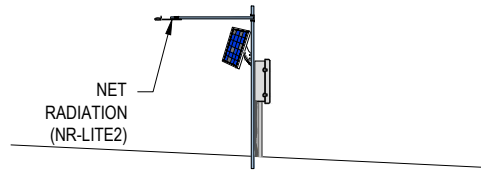
CLIENT/PROJECT:
AGNICO EAGLE
WHALE TAIL WRSF INSTRUMENTATION

PRODUCED BY:
O'Kane Consultants Inc.
Integrated Mine Waste Management and Closure Services
Specialists in Geochemistry and Unsaturated Zone Hydrology
OKC PROJECT NO.: 948/011

WHALE TAIL WRSF GENERAL ARRANGEMENT

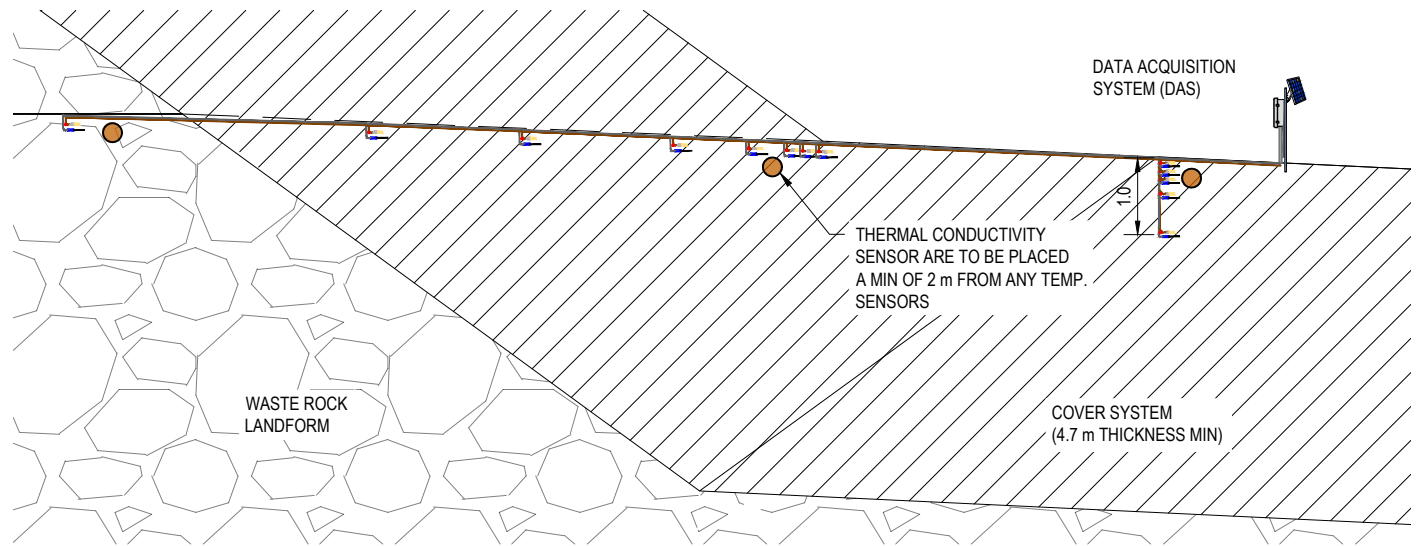
DWG. NO.: 948-011-001 REV.: 1

REFERENCE	DWG. NO.	DESCRIPTION	REVISIONS	NO.	DESCRIPTION	DRN. BY:	APPD. BY:	DATE	DRN. BY:	APPD. BY:	DATE
				0	ISSUED FOR CONSTRUCTION	HSC	GA	04.08.20	H. COOPER		12.10.18
				1	ENGINEER STAMP		MOK	04.30.20	G. MEIERS		12.10.18
									AS SHOWN	ANSI B	OKC RPT. NO.: 948/011-01



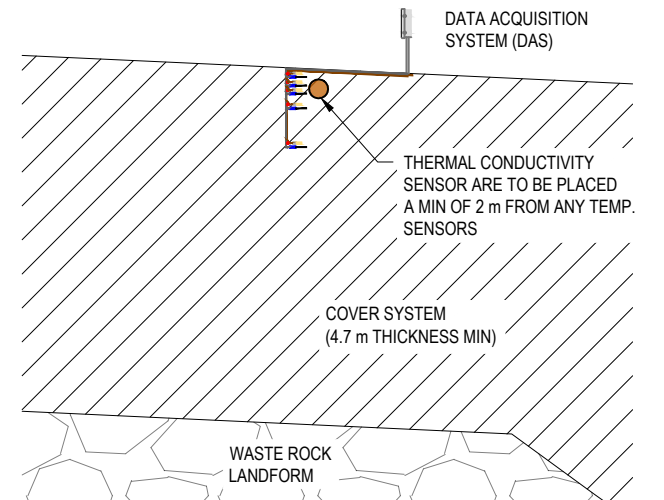
TYPICAL METEOROLOGICAL STATION

DETAIL A
1:50



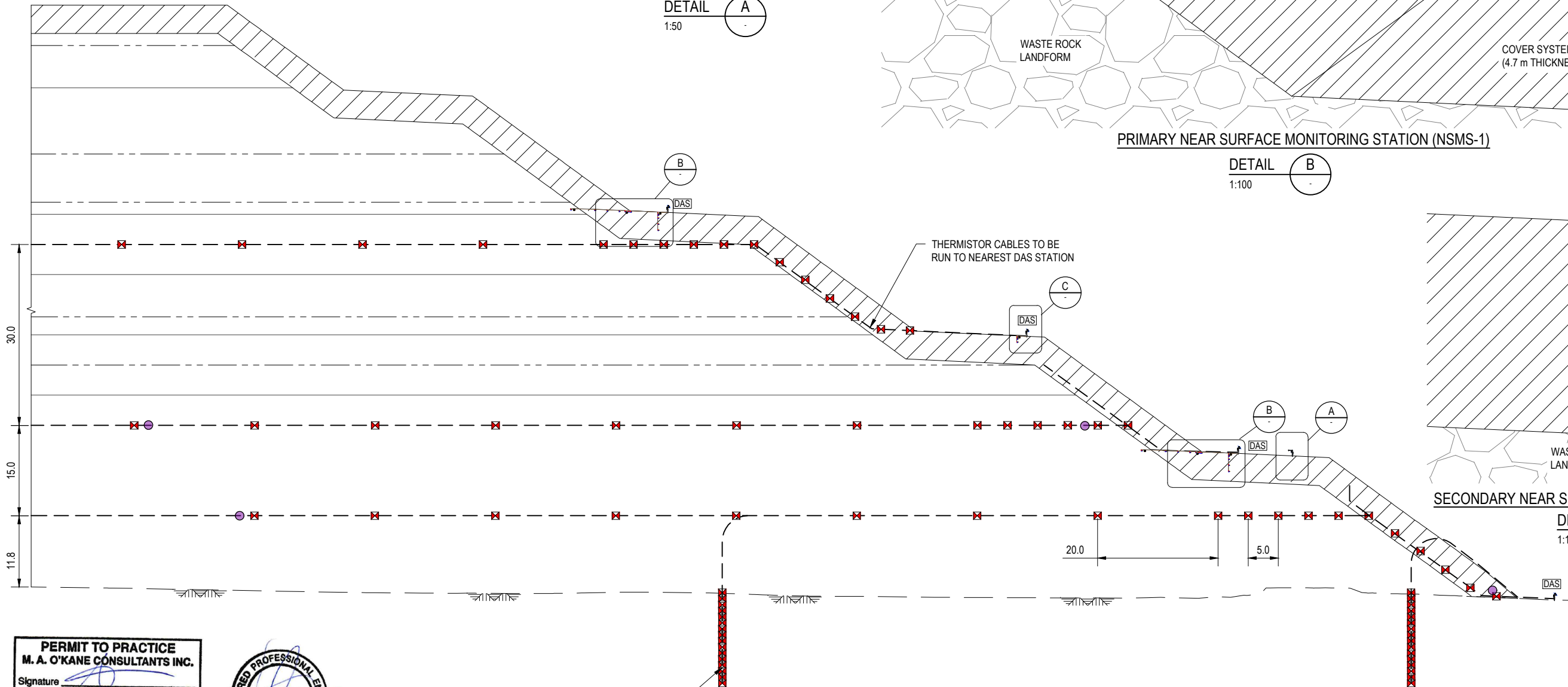
PRIMARY NEAR SURFACE MONITORING STATION (NSMS-1)

DETAIL B
1:100



SECONDARY NEAR SURFACE MONITORING STATION (NSMS-2)

DETAIL C
1:100



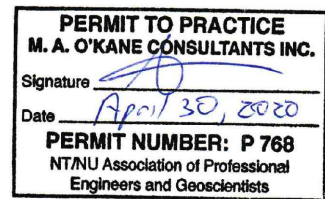
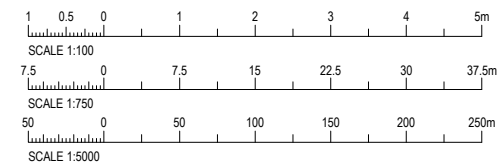
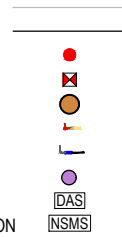
THERMISTOR STRING TO BE INSTALLED
WITHIN BEDROCK FOUNDATION
15 m DEPTH @ 1 m SPACING
LOCATED ONLY AT PMS

SECTION 1
1:750

WRSF THERMISTOR STRING SECTION

LEGEND

EXISTING CONTOUR
DESIGN CONTOUR
THERMISTOR STRING LOCATION
THERMISTOR
THERMAL CONDUCTIVITY
SOIL MATRIX SUCTION
VOLUMETRIC WATER CONTENT
DIFFERENTIAL PRESSURE SENSOR
DATA ACQUISITION SYSTEM
NEAR SURFACE MONITORING STATION



NOTE

- ALL UNITS IN METRES U.N.O.
- ALL TOPOGRAPHY PROVIDED BY AGNICO EAGLE.
- REFER TO DWG 948-011-001 FOR GENERAL INSTRUMENTATION ARRANGEMENT.
- PLACEMENT SCHEDULE PROVIDED BY AGNICO EAGLE AND IS SUBJECT TO CHANGE.
- ALL DATA ACQUISITION SYSTEM AND MET STATION LOCATIONS ARE PRELIMINARY AND SUBJECT TO CHANGE.
- REFER TO DWG 948-011-003 FOR THERMISTOR STRING DETAILS.
- FINAL LOCATION AND CONFIGURATION IS SUBJECT TO CHANGE WITH APPROVAL BY THE ENGINEER.

FOR CONSTRUCTION

CLIENT/PROJECT:

AGNICO EAGLE

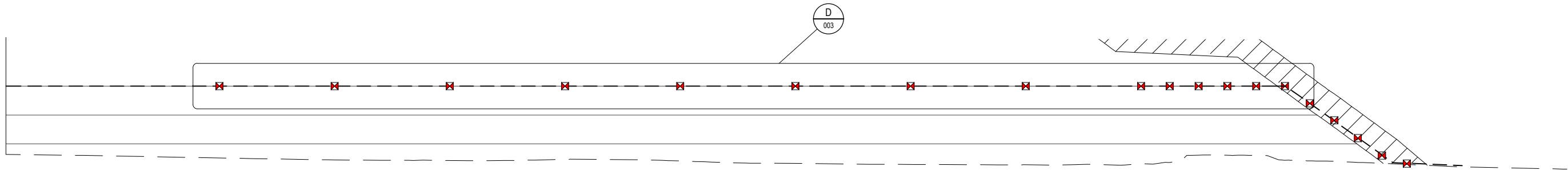
WHALE TAIL WRSF INSTRUMENTATION

PRODUCED BY:

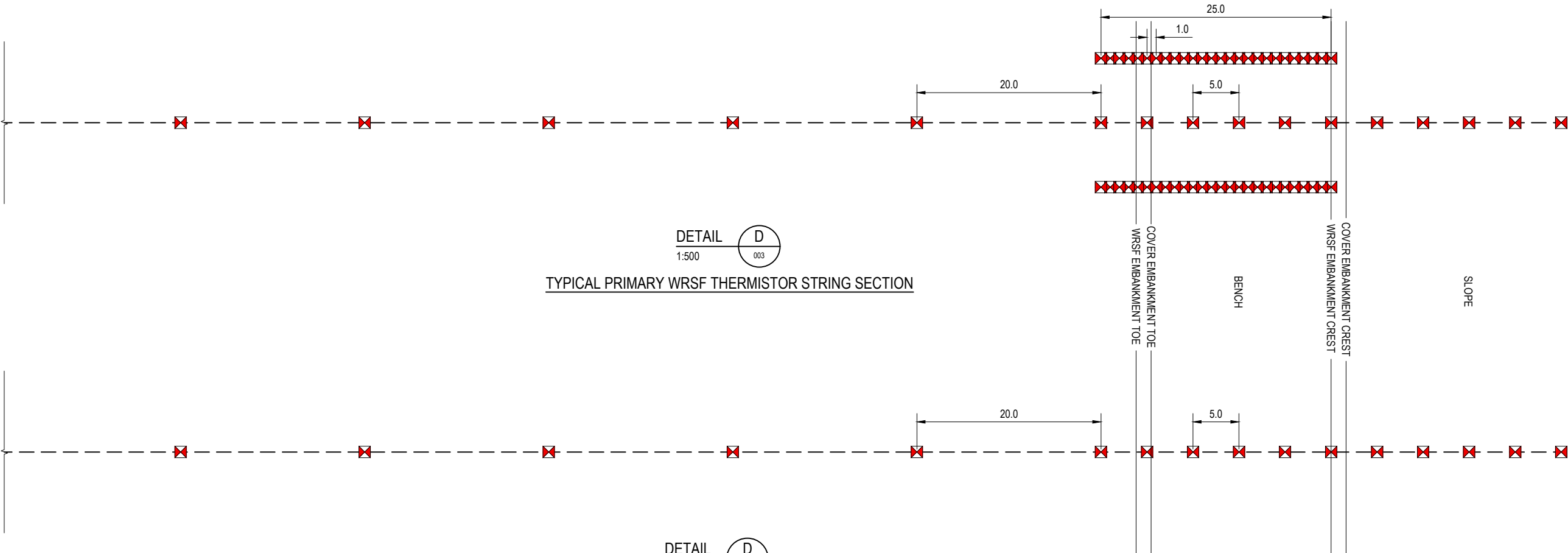
O'Kane Consultants Inc.
Integrated Mine Waste Management and Closure Services
Specialists in Geochemistry and Unsaturated Zone Hydrology
OKC PROJECT NO.: 948/011

WHALE TAIL WRSF MONITORING SECTION DETAILS

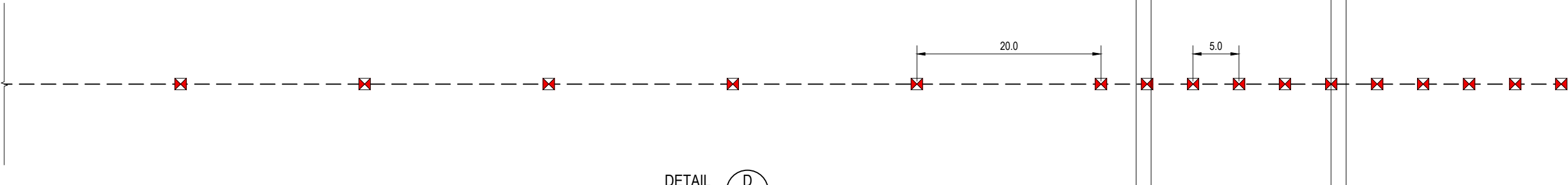
DWG. NO.: 948-011-002 REV.: 1



TYPICAL WRSF THERMISTOR STRING SECTION
1:750



TYPICAL PRIMARY WRSF THERMISTOR STRING SECTION



TYPICAL SECONDARY WRSF THERMISTOR STRING SECTION

PERMIT TO PRACTICE
M. A. O'KANE CONSULTANTS INC.
Signature: *[Signature]*
Date: April 30, 2020
PERMIT NUMBER: P 768
NT/NU Association of Professional
Engineers and Geoscientists

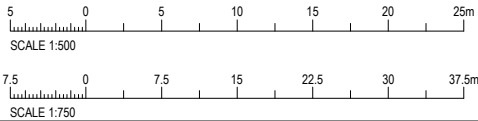
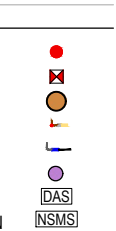


NOTE

1. ALL UNITS IN METRES U.N.O.
2. ALL TOPOGRAPHY PROVIDED BY AGNICO EAGLE.
3. REFER TO DWG 948-011-001 FOR GENERAL INSTRUMENTATION ARRANGEMENT.
4. PLACEMENT SCHEDULE PROVIDED BY AGNICO EAGLE AND IS SUBJECT TO CHANGE.
5. ALL DATA ACQUISITION SYSTEM AND MET STATION LOCATIONS ARE PRELIMINARY AND SUBJECT TO CHANGE.
6. FINAL LOCATION AND CONFIGURATION IS SUBJECT TO CHANGE WITH APPROVAL BY THE ENGINEER.

LEGEND

- EXISTING CONTOUR
- DESIGN CONTOUR
- THERMISTOR STRING LOCATION
- THERMISTOR
- THERMAL CONDUCTIVITY
- SOIL MATRIX SUCTION
- VOLUMETRIC WATER CONTENT
- DIFFERENTIAL PRESSURE SENSOR
- DATA ACQUISITION SYSTEM
- NEAR SURFACE MONITORING STATION



FOR CONSTRUCTION

CLIENT/PROJECT:

AGNICO EAGLE

WHALE TAIL WRSF INSTRUMENTATION

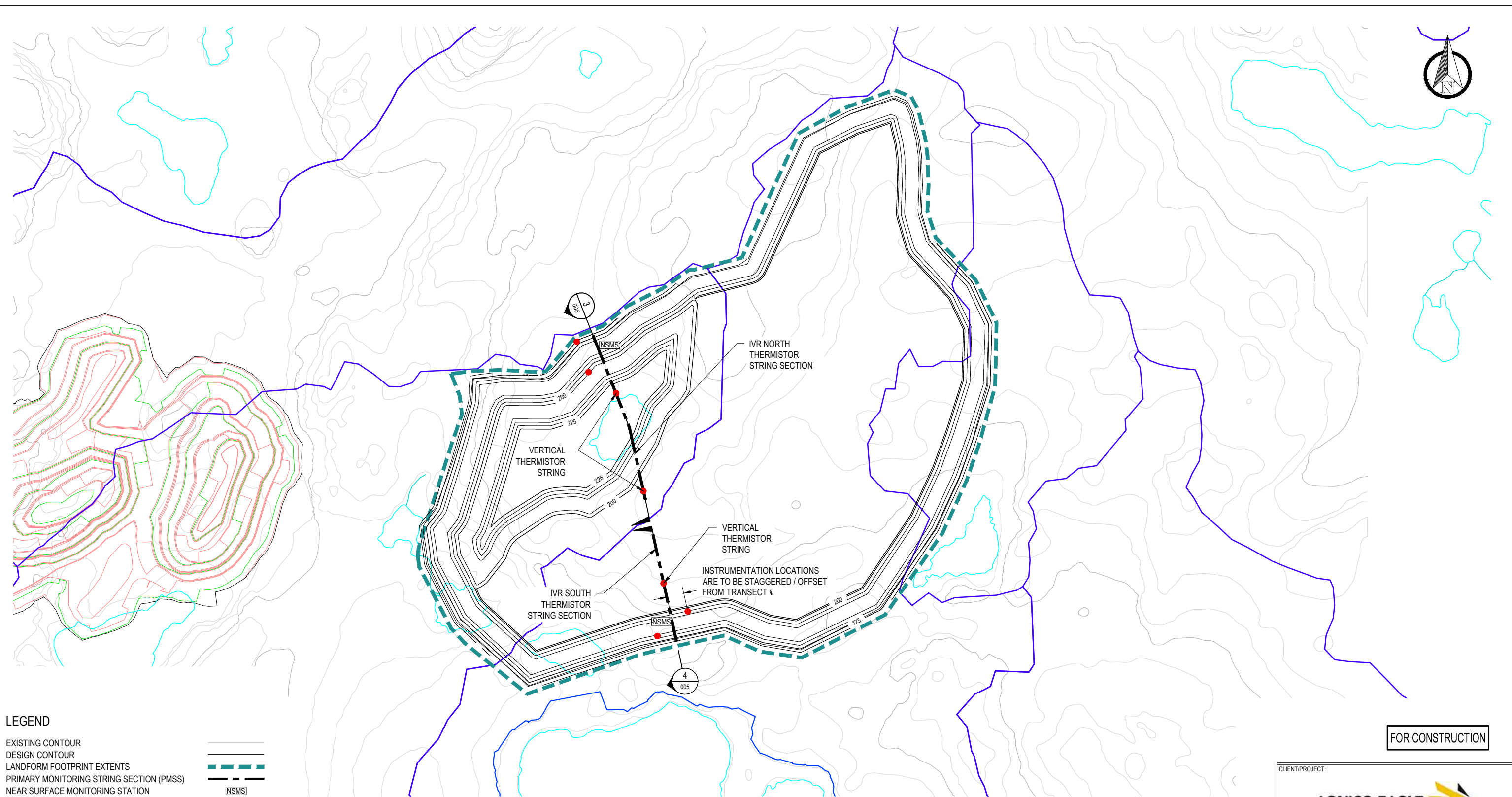
PRODUCED BY:

O'Kane Consultants Inc.
Integrated Mine Waste Management and Closure Services
Specialists in Geochemistry and Unsaturated Zone Hydrology
OKC PROJECT NO.: 948/011

WHALE TAIL WRSF TYPICAL THERMISTOR DETAILS

DWG. NO.: 948-011-003 REV.: 1

REFERENCE	DWG. NO.	DESCRIPTION	REVISIONS	NO.	DESCRIPTION	DRN. BY:	APPD. BY:	DATE	DRN. BY: H. COOPER		DATE: 12.10.18
				0	ISSUED FOR CONSTRUCTION	HSC	GA	04.08.20	APPD. BY: G. MEIERS		DATE: 12.10.18
				1	ENGINEER STAMP		MOK	04.30.20			
									SCALE: AS SHOWN	PAGE SIZE: ANSI B	OKC RPT. NO.: 948/011-01



LEGEND

- EXISTING CONTOUR
- DESIGN CONTOUR
- LANDFORM FOOTPRINT EXTENTS
- PRIMARY MONITORING STRING SECTION (PMSS)
- NEAR SURFACE MONITORING STATION
- THERMISTOR STRING LOCATION

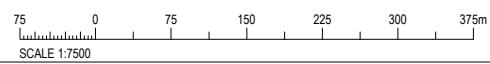
NOTE

- ALL UNITS IN METRES U.N.O.
- ALL TOPOGRAPHY PROVIDED BY AGNICO EAGLE.
- REFER TO DWG. 948-011-005 FOR SECTION DETAILS.
- FINAL LOCATION AND CONFIGURATION IS SUBJECT TO CHANGE WITH APPROVAL BY THE ENGINEER.

PERMIT TO PRACTICE
M. A. O'KANE CONSULTANTS INC.
Signature _____
Date April 30, 2020
PERMIT NUMBER: P 768
NTNU Association of Professional
Engineers and Geoscientists



WHALE TAIL IVR GENERAL ARRANGEMENT
1:7500



FOR CONSTRUCTION

CLIENT/PROJECT:

AGNICO EAGLE

WHALE TAIL WRSF INSTRUMENTATION

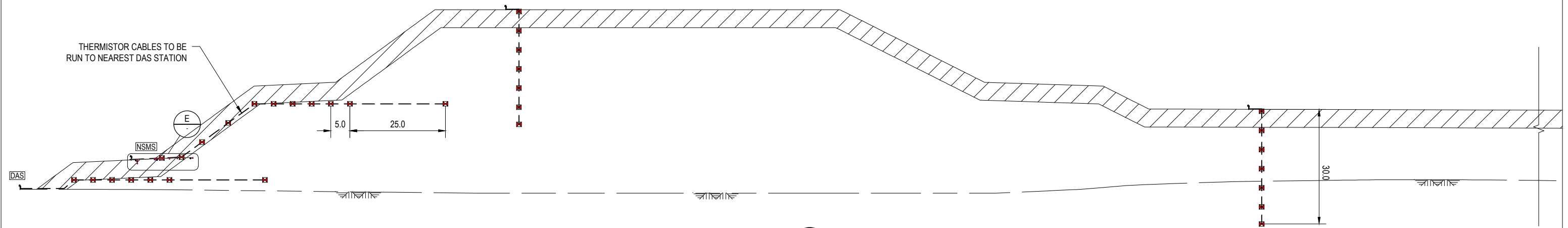
PRODUCED BY:

O'Kane Consultants Inc.
Integrated Mine Waste Management and Closure Services
Specialists in Geochemistry and Unsaturated Zone Hydrology
OKC PROJECT NO.: 948/011

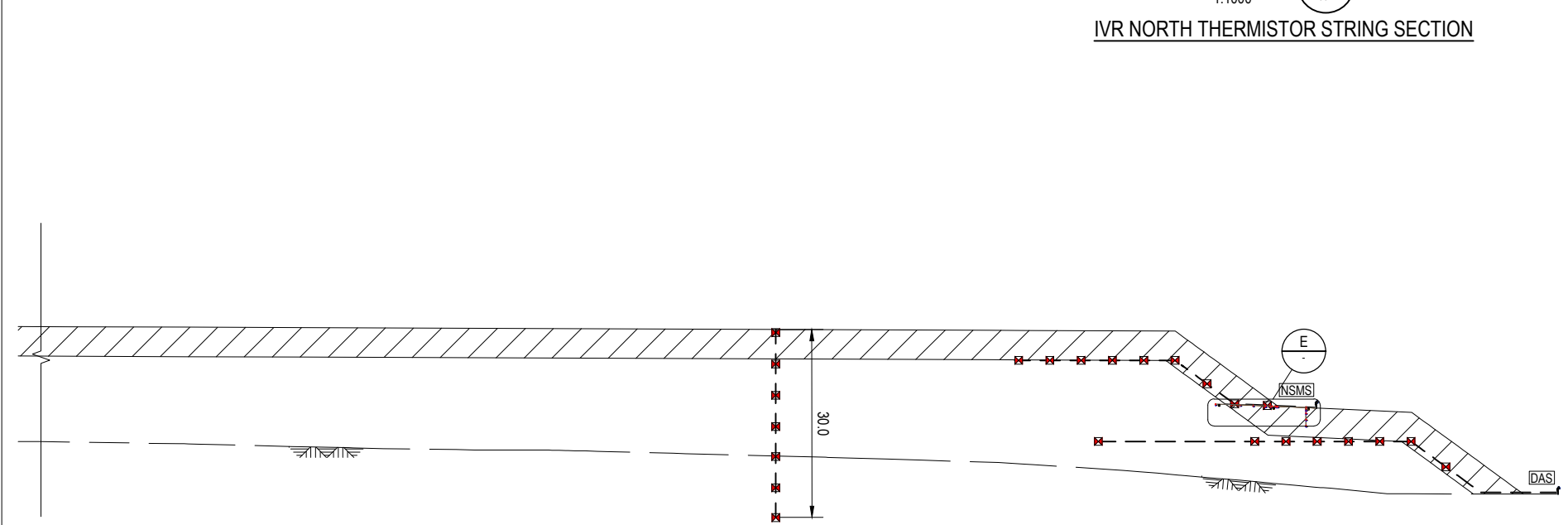
IVR WRSF GENERAL ARRANGEMENT

DWG. NO.: 948-011-004 REV.: 1

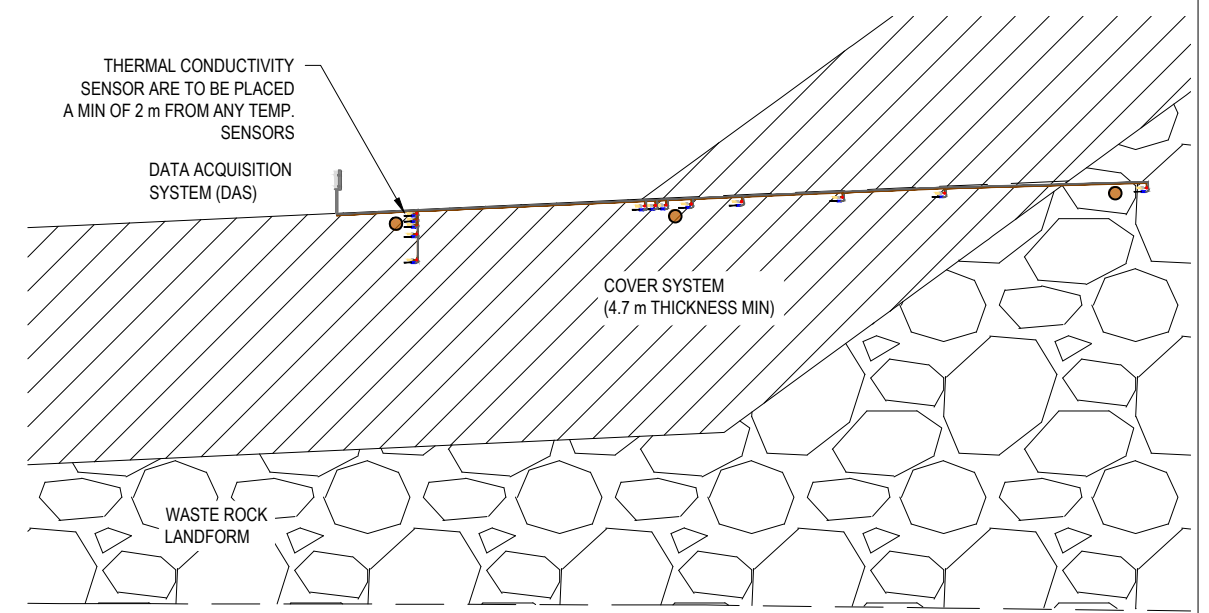
REFERENCE	DWG. NO.	DESCRIPTION	REVISIONS	NO.	DESCRIPTION	DRN. BY:	APPD. BY:	DATE	DRN. BY:	DATE:
				0	ISSUED FOR CONSTRUCTION	JMD	GA	04.08.20	J. DAND	01.03.19
				1	ENGINEER STAMP		MOK	04.30.20	G. MEIERS	01.03.19
									SCALE: AS SHOWN	PAGE SIZE: ANSI B
									OKC RPT. NO.: 948/011-01	



SECTION 3
1:1000
IVR NORTH THERMISTOR STRING SECTION



SECTION 4
1:1000
IVR SOUTH THERMISTOR STRING SECTION



DETAIL E
1:100
NEAR SURFACE MONITORING DETAIL

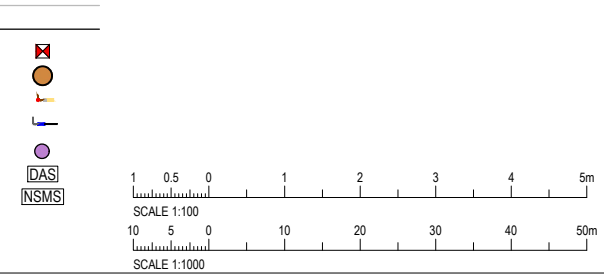
PERMIT TO PRACTICE
M. A. O'KANE CONSULTANTS INC.
Signature
Date April 30, 2020
PERMIT NUMBER: P 768
NT/NU Association of Professional Engineers and Geoscientists



- NOTE
- ALL UNITS IN METRES U.N.O.
 - ALL TOPOGRAPHY PROVIDED BY AGNICO EAGLE.
 - REFER TO DWG 948-011-001 FOR GENERAL INSTRUMENTATION ARRANGEMENT.
 - PLACEMENT SCHEDULE PROVIDED BY AGNICO EAGLE AND IS SUBJECT TO CHANGE.
 - ALL DATA ACQUISITION SYSTEM AND MET STATION LOCATIONS ARE PRELIMINARY AND SUBJECT TO CHANGE.
 - FINAL LOCATION AND CONFIGURATION IS SUBJECT TO CHANGE WITH APPROVAL BY THE ENGINEER.

LEGEND

- EXISTING CONTOUR
- DESIGN CONTOUR
- THERMISTOR
- THERMAL CONDUCTIVITY
- SOIL MATRIX SUCTION
- VOLUMETRIC WATER CONTENT
- DIFFERENTIAL PRESSURE SENSOR
- DATA ACQUISITION SYSTEM
- NEAR SURFACE MONITORING STATION



FOR CONSTRUCTION

REFERENCE	DWG. NO.	DESCRIPTION	REVISIONS	NO.	DESCRIPTION	DRN. BY:	APPD. BY:	DATE	SCALE 1:1000		
				0	ISSUED FOR CONSTRUCTION	JMD	GA	04.08.20	DRN. BY: J. DAND		DATE: 01.03.19
				1	ENGINEER STAMP		MOK	04.30.20	APPD. BY: G. MEIERS		DATE: 01.03.19
									SCALE: AS SHOWN		PAGE SIZE: ANSI B
									OKC RPT. NO.: 948/011-01		

CLIENT/PROJECT:

AGNICO EAGLE

WHALE TAIL WRSF INSTRUMENTATION

PRODUCED BY:

O'Kane Consultants Inc.
Integrated Mine Waste Management and Closure Services
Specialists in Geochemistry and Unsaturated Zone Hydrology
OKC PROJECT NO.: 948/011

IVR WRSF MONITORING DETAILS

DWG. NO.: 948-011-005 REV.: 1