
APPENDIX A SITE PHOTOGRAPHS

**Photo 1**

Photograph of test pit/monitoring well locations west of the maintenance shop.

**Photo 2**

Photograph of test pits/monitoring wells in pad area. Looking south.



Photo 3

Photograph of test pit/monitoring well locations south and east of the maintenance shop. Looking north.

**Photo 4**

Photograph of hand excavated trench completed by Miramar staff following the discovery of the fuel spill. Looking east.

**Photo 5**

Photograph of hand excavated trench completed by Miramar staff following the discovery of the fuel spill. Looking east.

**Photo 6**

Photograph of catch barrel and piping used in maintenance shop interception trench. Looking south.

**Photo 7**

Photograph of HDPE liner used in maintenance shop interception trench. Looking south.

**Photo 8**

Photograph of backfill material used in maintenance shop interception trench. Looking north.

**Photo 9**

Photograph of maintenance shop interception trench post construction. Looking south.



Photo 10
Construction of helipad interception trench.



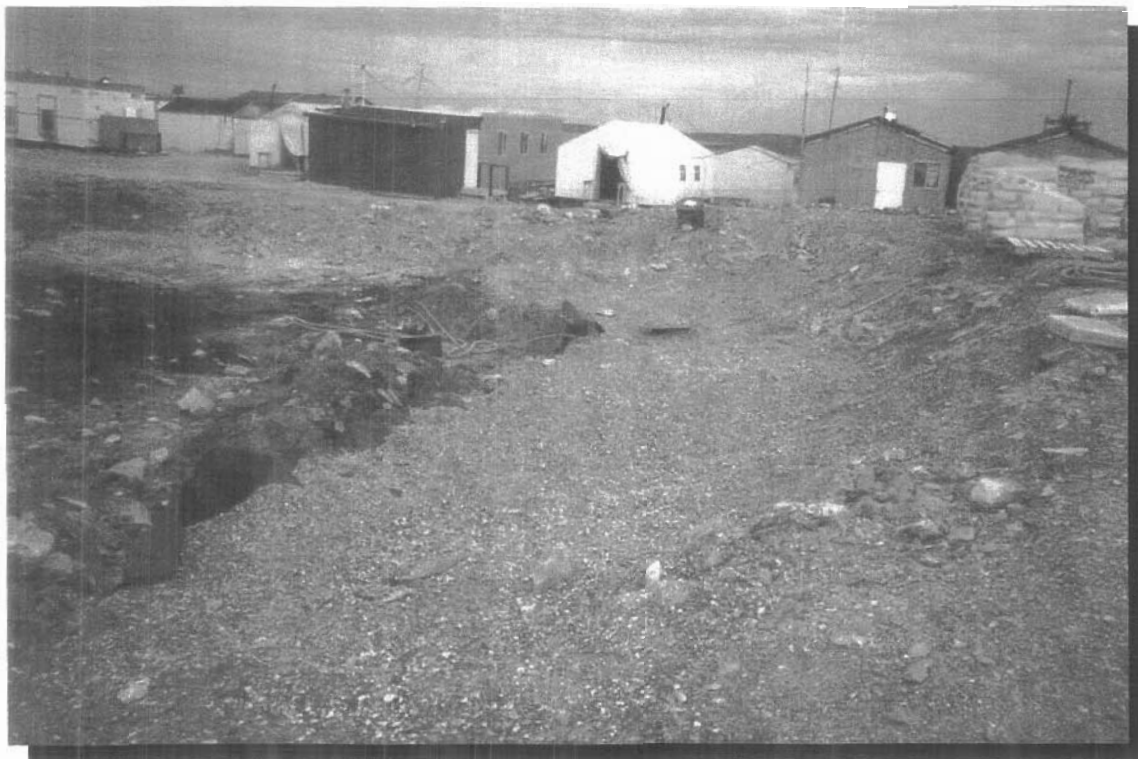
Photo 11
South wall of excavation.



Photo 12
North wall of excavation.

**Photo 13**

Photograph of helipad interception trench pre-construction. Looking south.

**Photo 14**

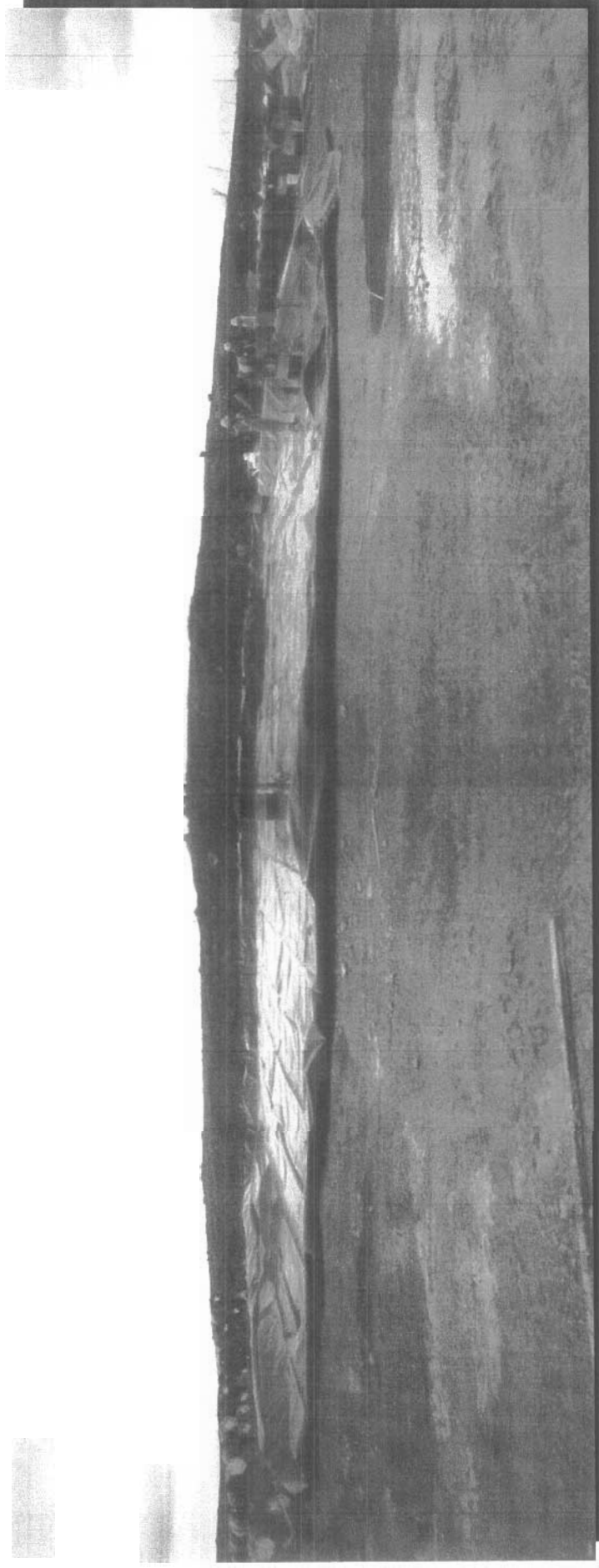
Photograph of helipad interception trench post-construction. Looking south.

**Photo 15**

Photograph of crush material used as bedding for landfarm area.
Looking south.

**Photo 16**

Photograph of Bentomax™ liner used as a protective barrier for
landfarm. Looking south.

**Photo 17**

Photograph of landfarm area. Looking west.

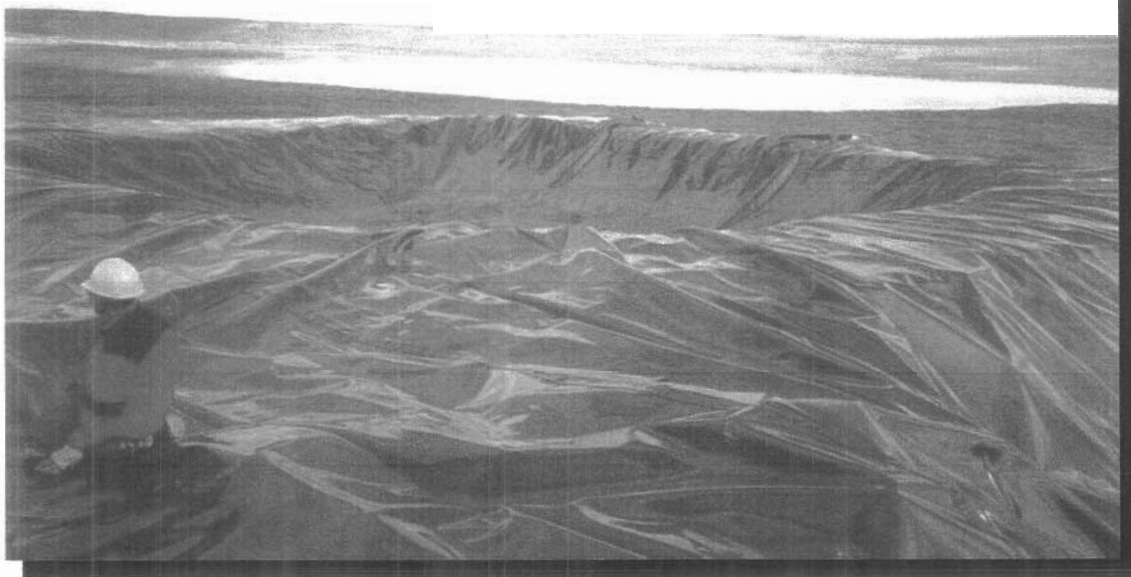


Photo 18
Lined pond.



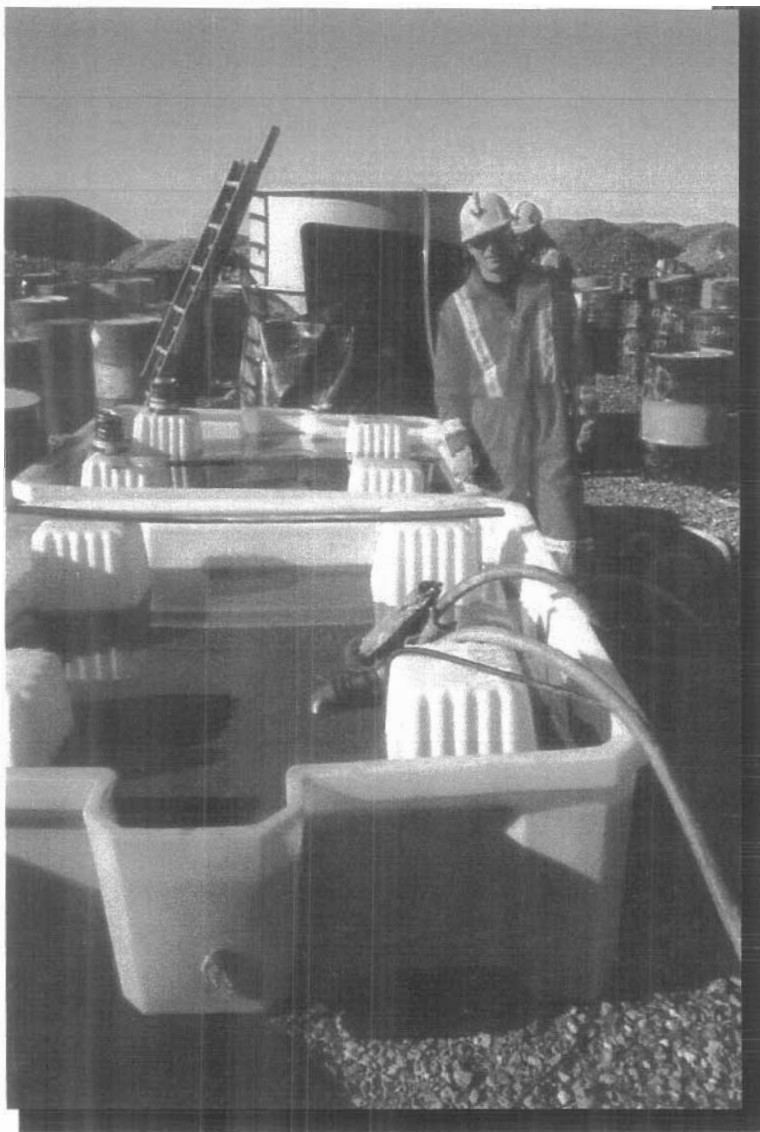
Photo 19
Land Treatment Area.

**Photo 20**

Excavated hydrocarbon impacted soil placed in LTA for remediation.
(Note upper left corner of photograph).
Barrels in background of photograph contain hydrocarbon impacted ready for
emplacement in LTA.



Photo 21
Photograph of water treatment system.

**Photo 22**

Storage basins for de-emulsification of pre-treatment liquid.



Photo 23
Removal of floating material with screen filter.



Photo 24
Coarse sediment filter.