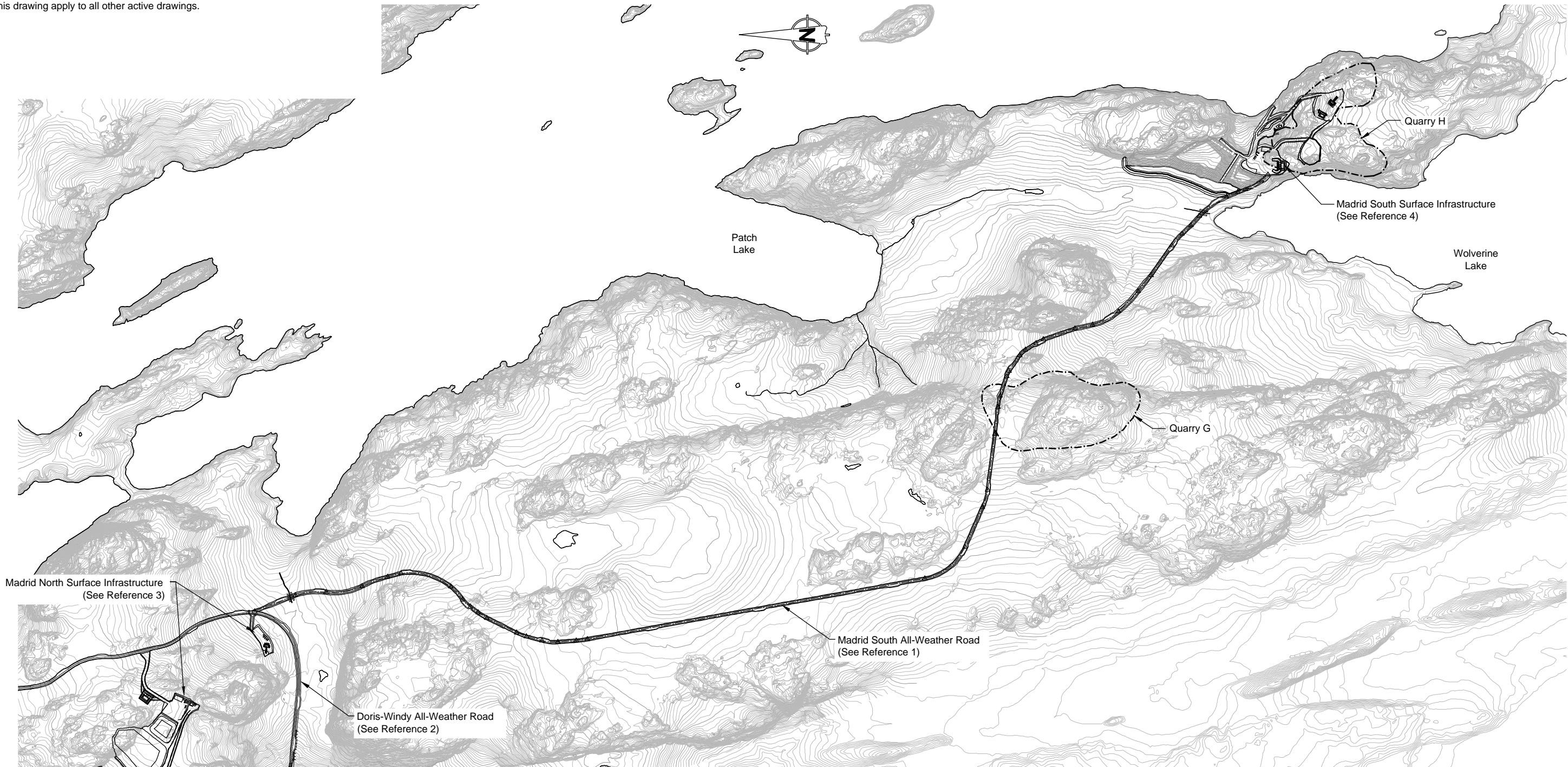


NOTES

1. Topographic contour data for the terrain model were provided by Hope Bay Mining, and is based on 2007 Aerial Photography. Contour intervals are 0.5m.
2. The co-ordinate system is UTM NAD 83, Zone 13.
3. All dimensions are in metric units, unless specifically mentioned.
4. Notes in this drawing apply to all other active drawings.

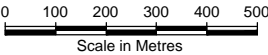


LEGEND

- Existing Approved and Permitted Quarry
- Proposed Development Quarry
- Road Alignment

REFERENCES

1. Engineering drawings for the Madrid South All-Weather Road, Hope Bay Project, Nunavut, Canada. Issued for Discussion. Revision D. Project No. 1CT022.001. October 31, 2014.
2. Engineering Drawings for the Doris-Windy All-Weather Road, Doris Infrastructure Project, Nunavut, Canada. Revision AB1. As-Built Drawings Prepared for Hope Bay Mining Ltd. Project Number: 1CH008.033/.058. May 11, 2012
3. Engineering drawings for the Madrid North Surface Infrastructure, Hope Bay Project, Nunavut, Canada. Issued for Discussion. Revision E. Project No. 1CT022.001. October 31, 2014.
4. Engineering drawings for the Madrid South Surface Infrastructure, Hope Bay Project, Nunavut, Canada. Issued for Discussion. Revision F. Project No. 1CT022.001. October 31, 2014.



Madrid Closure and Reclamation Plan

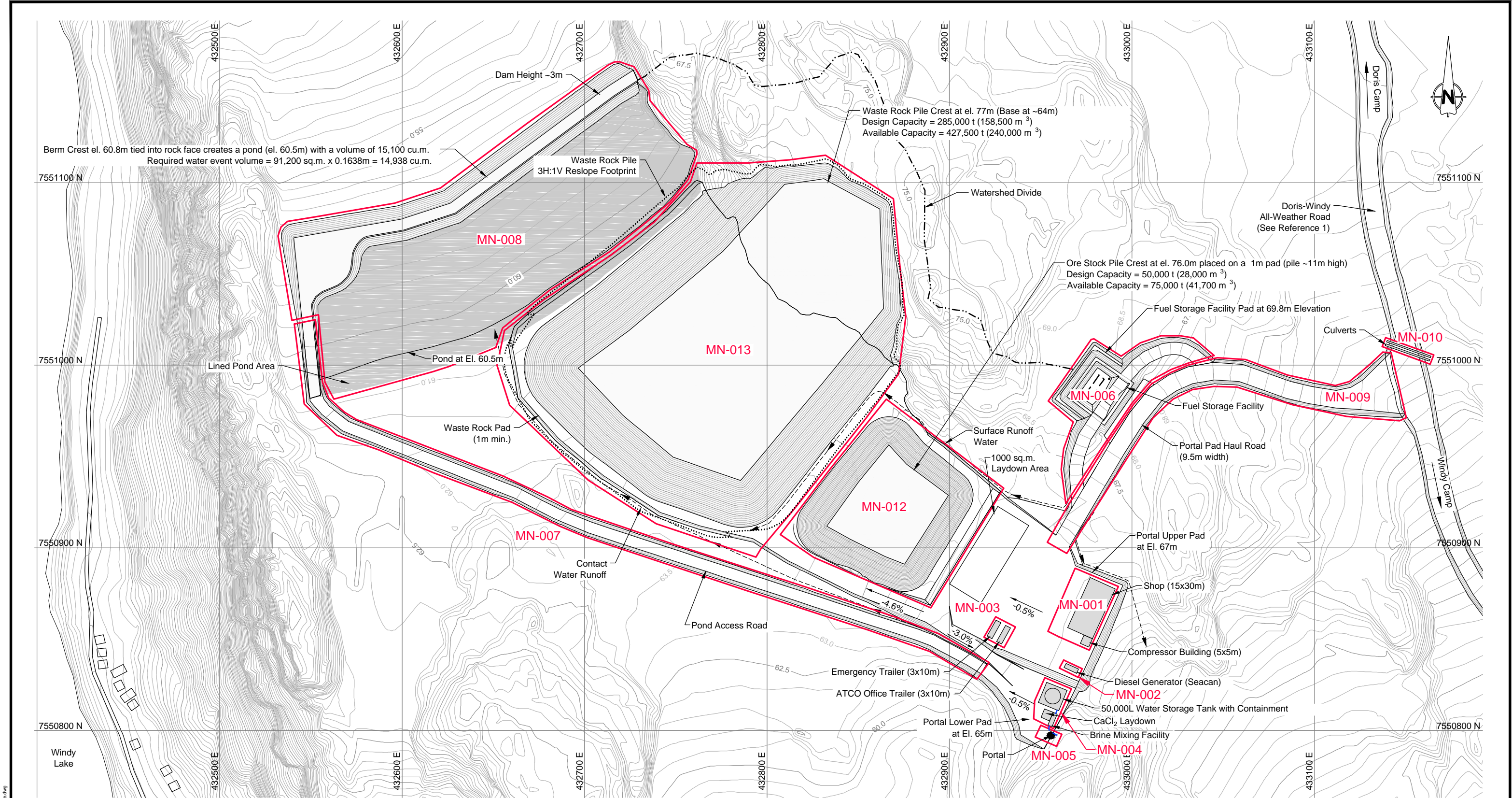
General Arrangement  
Madrid North to Madrid South

HOPE BAY PROJECT

SRK JOB NO.: 1CH022.001  
FILE NAME: 1CT022\_001\_Madrid South\_Overview.dwg

DATE: Oct. 2014  
APPROVED: LW  
FIGURE: 2





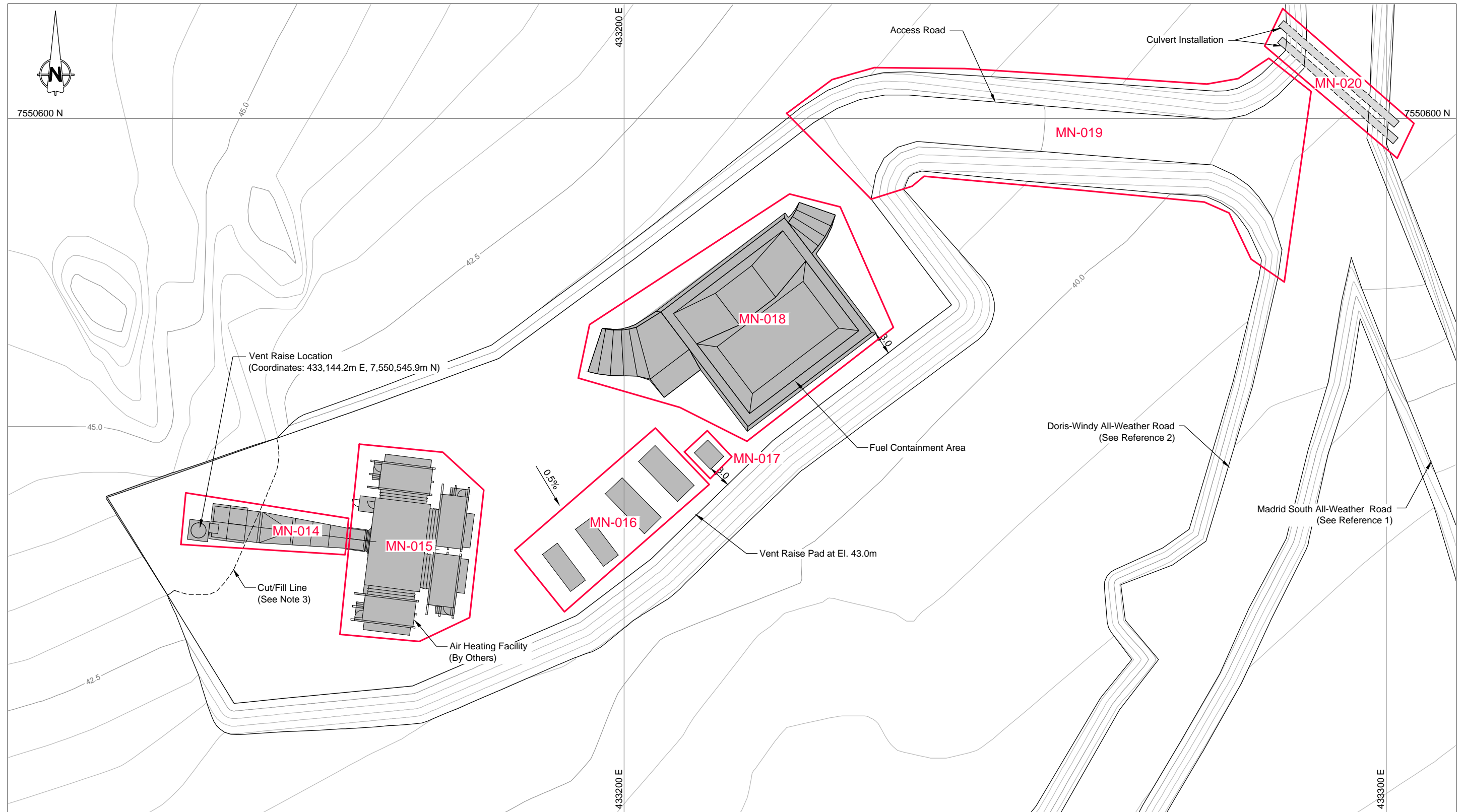
- NOTES**
1. All dimensions in metres unless noted otherwise.
  2. Notes in this drawing apply to all other active drawings.

**REFERENCE**

1) Engineering Drawings for the Doris-Windy All-Weather Road, Doris Infrastructure Project, Nunavut, Canada. Revision AB1. As-Built Drawings Prepared for Hope Bay Mining Ltd. Project Number: 1CH008.033/.058. May 11, 2012

 SRK JOB NO.: 1CH022.001 FILE NAME: 1CT022.001_Madrid North Closure.dwg	 HOPE BAY PROJECT	Madrid Closure and Reclamation Plan		
		Madrid North Site Layout Portal		
		DATE: Oct. 2014	APPROVED: LW	FIGURE: 3





#### NOTES

1. All dimensions in metres unless noted otherwise.
2. Cut into bedrock outcrop required for construction of vent raise collar.
3. Notes in this drawing apply to all other active drawings.

#### REFERENCES

- 1) Engineering Drawings for the Madrid South All-Weather Road, Hope Bay Project, Nunavut, Canada. Revision D. Issued for Discussion Drawings Prepared for TMAC Resources Inc. Project Number 1CT022.001.410. October 31, 2014
- 2) Engineering Drawings for the Doris-Windy All-Weather Road, Doris Infrastructure Project, Nunavut, Canada. Revision AB1. As-Built Drawings Prepared for Hope Bay Mining Ltd. Project Number: 1CH008.033/058. May 11, 2012



SRK JOB NO.: 1CH022.001  
FILE NAME: 1CT022.001\_Madrid North Closure.dwg



HOPE BAY PROJECT

Madrid Closure and Reclamation Plan

Madrid North  
Site Layout Vent Raise

DATE: Oct. 2014 APPROVED: LW FIGURE: 4