

**Pre-Development Batch Concrete Plant
NWB 2BE-MEA0507**

**AGNICO-EAGLE
MEADOWBANK PROJECT**

Prepared by: Stéphane Robert
Environmental Project Coordinator

Approved by: Larry Connell, P.Eng.
Regional Manager: Environment,
Social and Government Affairs
Agnico-Eagle Mines Ltd

Revision 1
January 30, 2008

Agnico-Eagle Mines Limited proposes to set up a batch concrete plant on the proposed Meadowbank plant site late in the first quarter of 2008 to allow concrete to be produced for the footings for the permanent camp and other plant site facilities. The proposed batch plant is a relatively small mobile batch plant to be used to mix cement, aggregate and water in appropriate proportions to produce concrete for footings, foundations and floors during construction. Aggregate will be produced on site by crushing and screening of quarried rock. All screening will be dry screening (i.e. no wash plant). All cement has been shipped to site in supersacs (2007 summer sea lift).

The plant will be set up on a rock fill pad on the plant site in an area immediately to the northeast of the planned 5 million fuel storage tank (see attached Figure – Starter Pit Layout Drawing). It will be inside a bermed area. All wash water will be recycled through the batch plant whenever possible. Excess water will be sent to Attenuation Pond #1. The plant will generate no other waste materials. It is anticipated that the water consumption for this batch plant will average 15 m³ per day.

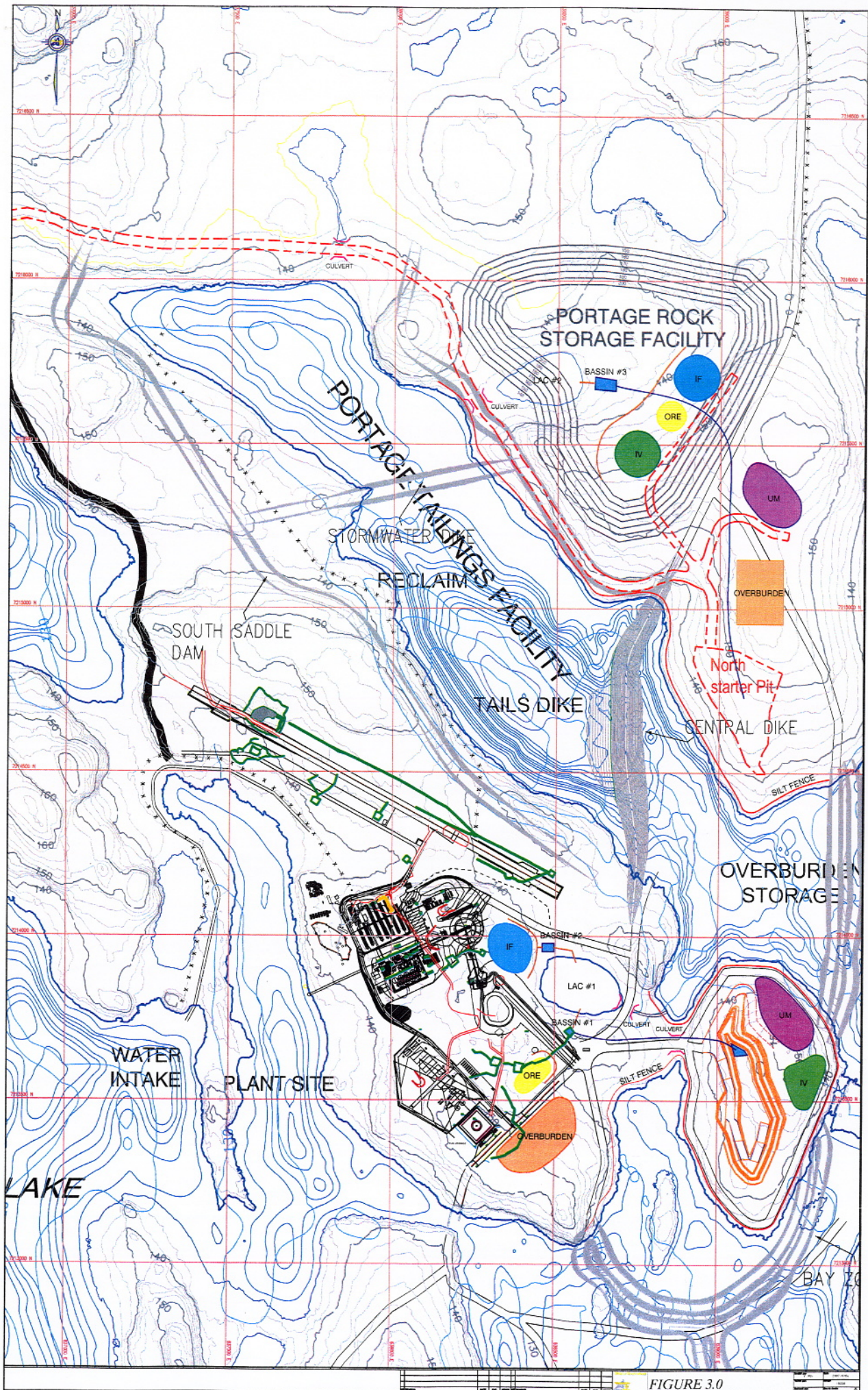


FIGURE 3.0