



MEADOWBANK GOLD PROJECT

Screening Decision “Pipe Dream Winter Road and Mining Exploration” Project Proposal, 11EN010

2013 Annual Report

Prepared for:

Nunavut Impact Review Board

Prepared by:

Agnico Eagle Mines Limited – Meadowbank Division

TABLE OF CONTENTS

SECTION 1. ANNUAL REPORT	1
1.1 Drilling	1
1.2 Trenches	2
1.3 Work Plan for 2014	2
1.4 Summary of monitoring results based on the Mitigation and Monitoring Plan.....	2
1.5 protection of archaeological and paleontological resources	2
1.6 Water Use	2
1.7 Waste Management	2
1.7.1 Solid waste	2
1.7.2 Grey water	2
1.7.3 Sewage.....	2
1.7.4 Drill waste	3
1.8 Fuel and chemical storage	3
1.9 Wildlife.....	3

LIST OF FIGURES

Figure 1-1: AEM 2013 drilling program location	1
--	---

LIST OF APPENDICES

Appendix A:	2014 Work Plan
Appendix B:	AEM 2013 Annual Report: License 2BE-MEA1318
Appendix C:	AEM 2013 Annual Report: Lease KVL312C03

DOCUMENT CONTROL

Version	Date (YMD)	Section	Page	Comment
1	2014/05/01	All	All	

Prepared By: Meadowbank Environment Department

Approved By:



David Frenette
Environmental Coordinator

The information in this document has been presented to mine managers and is endorsed and approved by senior management at AEM*.

* AEM is a recent signatory of the Mining Association of Canada- Toward Sustainable Mining. This document presents information related to assessment tools related to: Biodiversity Conservation Management and Tailings Management.

SECTION 1. ANNUAL REPORT

The NIRB requested in his screening decision No 11EN010 to report any exploration activities in the vicinity of the Meadowbank Project:

The Proponent shall include within its annual report for the Meadowbank Gold Project (NIRB 03MN107), a summary of activities undertaken as authorized by the Board for File No. 11EN010. This summary is expected to include a map showing approximate locations of drill sites and routing of winter trails.

Agnico Eagle Mines Limited (AEM) signed an exploration agreement with the Nunavut Tunngavik Inc. in January 2013 for the IVR property. This property is located approximately 50 km North East of the Meadowbank mine and 125 km North of the Baker Lake community. The mineral exploration aims gold mineralization.

This Screening Decision no. 11EN010 Annual Report is complementary to the 2013 Annual Report received by NIRB on April 15th and available on NIRB's online public registry at the following location:

<http://ftp.nirb.ca/03-MONITORING/03MN107-MEADOWBANK%20GOLD%20MINE/03-ANNUAL%20REPORTS/02-PROPONENT/2013/01-REPORT/>

1.1 DRILLING

In 2013, fourteen (14) drilling holes, all located on IOL, were made by Agnico Eagle Mine Exploration Division (see Figure 1-1) for a total length of 2,332 meters. All drilling areas are managed in a manner to reduce our environmental footprint to the project area. Drill holes reclamation was completed during the 2013 drilling program.

No drilling on ice occurred in 2013 and no winter roads were used.

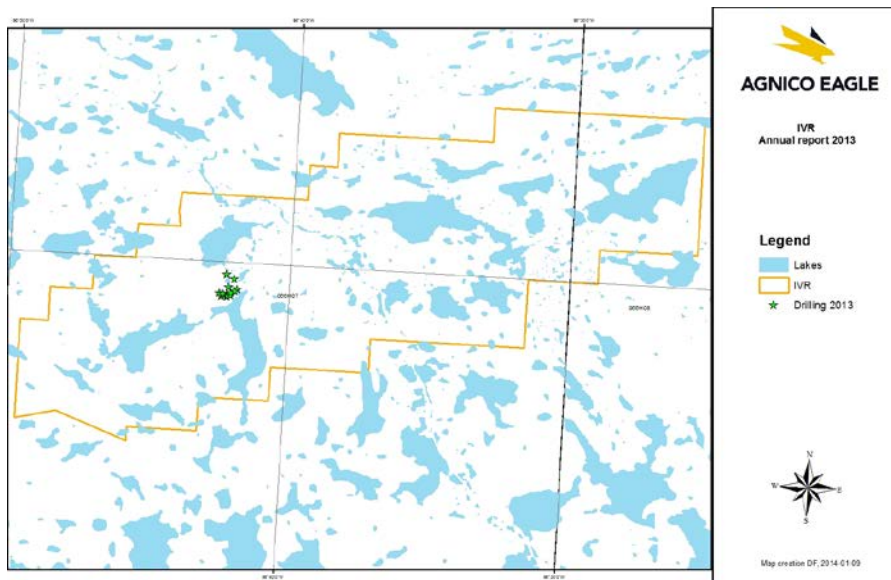


Figure 1-1: AEM 2013 drilling program location

1.2 TRENCHES

No trench done in 2013.

1.3 WORK PLAN FOR 2014

You will find in Appendix A the 2014 work plan for IVR Exploration Project (Lease KVL312C03) and the 2014 work plan for the Meadowbank Exploration Project (Lease KVCL303H305).

1.4 SUMMARY OF MONITORING RESULTS BASED ON THE MITIGATION AND MONITORING PLAN

In Part J of the 2013 annual report presented to the Nunavut Water Board (see Appendix B), you can see the monitoring results.

The 2013 annual report submitted to KIA is also present in Appendix C

1.5 PROTECTION OF ARCHAEOLOGICAL AND PALEONTOLOGICAL RESOURCES

To protect archaeological and paleontological resources, Agnico-Eagle Mines (Exploration division) has hired a consultant firm to make an archeological impact assessment. The final report has been submitted with the 2013 Annual report (Appendix G19).

1.6 WATER USE

The water intake was approved by the NWB Type B Water License 2BE-MEA1318 and the consumption detail can be found in 2013 Annual report Part J prepared of the NWB (Appendix B).

1.7 WASTE MANAGEMENT

1.7.1 Solid waste

All solid wastes are sorted at work sites and regularly transported to the Meadowbank mine site for proper disposal. All wastes are kept inaccessible to wildlife at all time.

1.7.2 Grey water

A “grey water” system was installed at the exploration camp. This system includes a grease trap that separates the grease, which is then collected and transported by vacuum/septic trucks to the Meadowbank mine site for disposal on a weekly basis. The grey water passes through a sump before being released into the environment.

1.7.3 Sewage

All sewage water is directed to the sewage holding tank and is then transported to the Meadowbank mine site via vacuum/septic trucks for processing at the onsite sewage treatment plant.

1.7.4 Drill waste

The drill cuttings are disposed in a natural topographic depression located at least 30 meters away from any water body, where there is no risk of runoff.

1.8 FUEL AND CHEMICAL STORAGE

The storage of hazardous material is done in a manner to avoid any release of substance into the environment, kept inaccessible to wildlife and at least thirty-one (31) meters away from the high water mark. Secondary containment are used when barreled fuels need to be stored, The refuelling of all equipment also occurs at a minimum of thirty-one (31) meters away from the high water mark. In 2013, AEM do not have to treat any hydrocarbon contaminated soil resulting from his activities.

1.9 WILDLIFE

A problematic with a wolverine occurred by the beginning of 2013. It came frequently to the exploration camp and did some damages to the buildings. The Meadowbank environment department and the Nunavut Government were informed of the situation. The animal has been deterred on several occasions, but exploration activities did not have to be suspended because of the wildlife presence.

APPENDIX A

2014 Work Plan

IVR Exploration Project (Lease KVL312C03)

Meadowbank Exploration Project (Lease KVCL303H305)



AGNICO EAGLE

IVR EXPLORATION PROJECT

2014 Work Plan

Lease KVL312C03

Prepared by:

Agnico Eagle Mines Limited, Exploration Division

January 2014

Table of content

1. Location	2
2. Proponent	2
3. Land Use Authorization	2
4. Permitting Summary	3
5. Equipment and Contractors	4
6. Proposed Activities	4
7. Areas of Activity	4
8. Period of Land Use Operations, 2014	5
9. Environmental Management	5
Figure 1; Exploration area	6

1. Location

This property is located approximately 50 km North East of the Meadowbank mine and 125 km North of the Baker Lake community.

2. Proponent

Agnico Eagle Mines Ltd.

Contact :

David Frenette

Environment Coordinator

C.P. 87

765 Chemin de la mine Goldex

Val-d'Or, Quebec, J9P4N9

david.frenette@agnicoeagle.com

3. Land Use Authorization

This 2014 Work Plan covers the proposed activities for the IVR Exploration Project under the lease KVL312C03. Activities described in this work plan are authorized by various authorizing agencies. The IVR Property is located on Inuit Owned Land administered by the Kivalliq Inuit Association.

4. Permitting Summary

The following table summarizes permits issued for the exploration in the IVR and Meadowbank areas.

Table 1: Meadowbank and IVR Areas, Exploration Permits

License	Details	Licence Expiry date
KVRW07F06	Land use, winter road	2015/05/16
KVRW09F01	Land use, winter road	2015/05/31
KVCL303H305	Exploration lease	2015/12/31
2BE-MEA1318	Water License, 269m3/day	2018/03/06
KVRW11F01	Land use, winter road	2015/05/16
N2011C0010	Land use, winter road and drilling	2014/06/09
KVL312C03	Staking, prospection, exploration, drilling	2014/08/28

5. Equipment and Contractors

For 2014, Agnico Eagle has contracted Orbit Garant for drill services. Up to two (2) diamond drills are planned to be in operation in 2014. For helicopter support, Agnico Eagle has contracted Nunami Helicopter Transport Corp, one (1) helicopter should be on site between April and August.

Major Contractors

Diamond Drilling	Orbit Garant Drilling	Val-d'Or, QC	819-824-2707
Helicopter	Nunami helicopter	Carp, ON	613-839-5868

6. Proposed Activities

1. A permit to obtain a winter access road between Meadowbank and the IVR property has been requested to AANDC. This winter access will allow transportation of the material required for the drilling campaign. The exploration area is located on Inuit Owned Land but the winter access is mainly located on crown land.
2. Agnico Eagle Mines anticipates a drilling program of about 5,000 meters in 2014 for the IVR area. The drill program will run from April to August.

7. Areas of Activity

The diamond drilling will be concentrated in the area shown in Figure 1. Note that the outline of the work area indicates the general location of the exploration area, in reality the land use area will be limited to the specific location of the drill holes collars. Prospecting and mapping could be conducted on the entire property.

8. Period of Land Use Operations, 2014

April-August:

- Install a temporary core shack on the IVR property
- Install a fuel cache on the IVR property
- Start surface diamond drilling, up to 2 rigs
- Surface exploration (prospecting).

9. Environmental Management

Fuel Storage

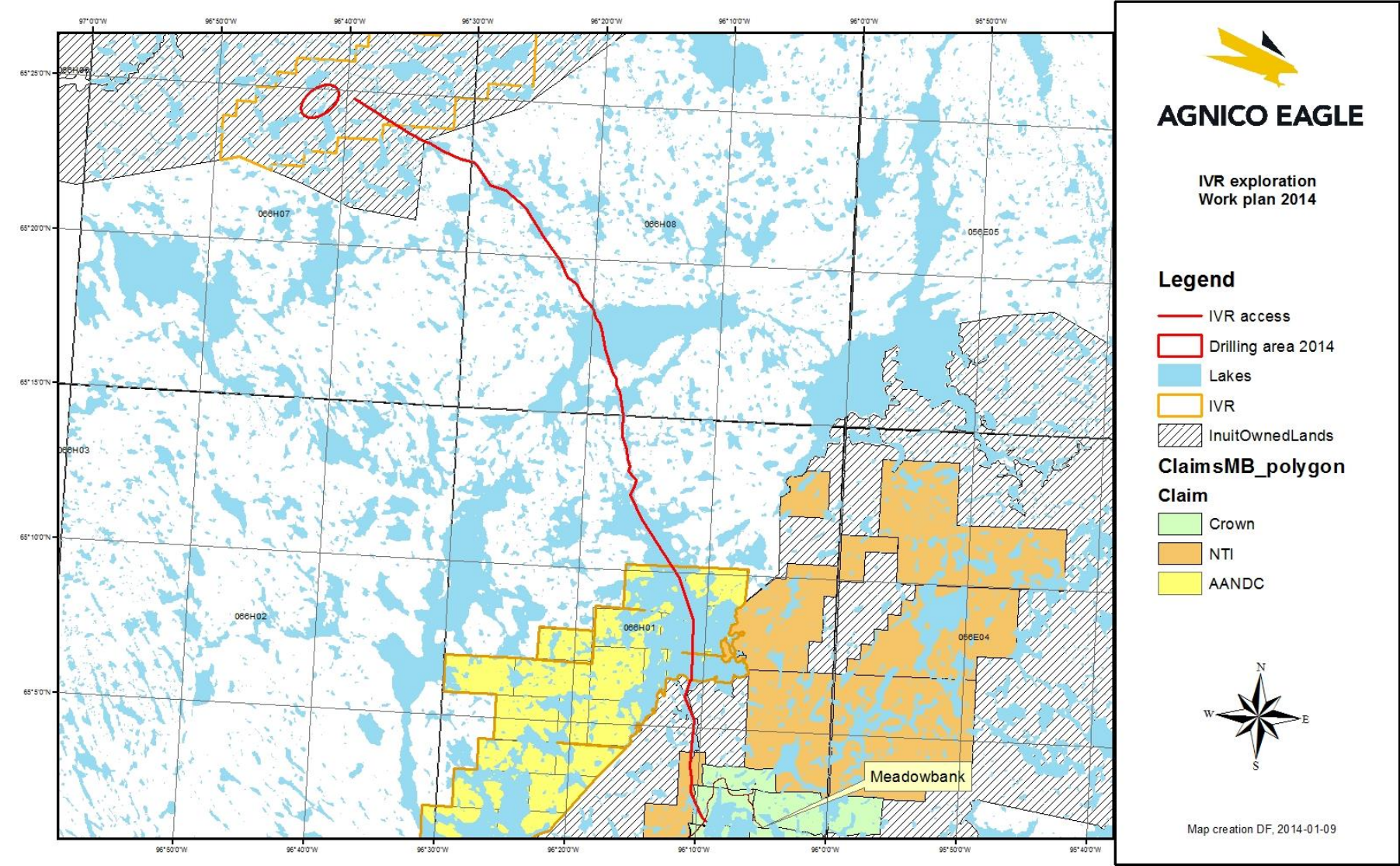
The fuel will be stored in double-walled fuel tanks or in barrels stocked in a secondary containment. A storage of 50,000 liters of fuel would be required near of the exploration activities in the IVR area.

Additionally, Agnico Eagle retains some gasoline in barrels for the operation of snowmobiles and small pumps (approximately 20 barrels, as needed). The gasoline will also be stocked in a secondary containment.

Water Management

The management of exploration activities is conducted in conformity with the regulatory requirements set out by the Nunavut Water Board in Type B Water License 2BE-MEA0813.

Figure 1; Exploration area





AGNICO EAGLE

MEADOWBANK EXPLORATION PROJECT

2014 Work Plan

Lease KVCL303H305

Prepared by:

Agnico Eagle Mines Limited, Exploration Division

January 2014

Table of content

1. Location..... 3

2. Proponent 3

3. Land Use Authorization 3

4. Permits Summary 4

5. Planned Activities 4

6. Equipment and Contractors 4

7. Period of Land Use Operation 5

8. Environmental Management 5

1. Location

The Meadowbank property is located 70 km north of the hamlet of Baker Lake. Regional exploration program on and around the Meadowbank property is aiming at discovering new gold resources that could eventually be extracted and processed through the nearby Meadowbank mine mill. Exploration activities include prospecting, till sampling, geophysical surveying, and drilling over multiple target areas surrounding the mine site.

2. Proponent

Agnico Eagle Mines Ltd.

Contact :

David Frenette

Environment Coordinator

C.P. 87

765 Chemin de la mine Goldex

Val-d'Or, Quebec, J9P4N9

david.frenette@agnicoeagle.com

3. Land Use Authorization

Exploration Lease KVCL303H305 authorizes surface access for exploration and associated activities near the Meadowbank Project on IOL Parcel BL-14. After the finalization of Meadowbank Production Lease KVPL08D280 in July 2008, the exploration lease was amended to include only the new Exploration Camp at KM 100 of the All Weather Private Access Road (AWPAR) and exploration activity on areas outside of the Meadowbank Mine site (designated by the boundary of KVPL08D280).

In 2014, the focus will be on finding new resources and exploring for new mineralized zones. Exploration work will consist predominantly of diamond drilling, with some geological mapping, trenching, prospecting and geophysical surveys. For this year, the exploration crew will be based at the Meadowbank Mine.

4. Permits Summary

Table 1: Meadowbank and IVR Areas, Exploration Permits

License	Details	Licence Expiry date
KVRW07F06	Land use, winter road	2015/05/16
KVRW09F01	Land use, winter road	2015/05/31
KVCL303H305	Exploration lease	2015/12/31
2BE-MEA1318	Water License, 269m3/day	2018/03/06
KVRW11F01	Land use, winter road	2015/05/16
N2011C0010	Land use, winter road and drilling	2014/06/09
KVL312C03	Staking, prospection, exploration, drilling	2014/08/28

5. Planned Activities

Diamond Drilling

The planned 2014 diamond drilling program will consist of approximately 500 m of drilling in the area shown on the figure 1. Note that the outline of the work area indicates the general location of the exploration area, in reality the land use area will be limited to the specific location of the drill holes collars.

6. Equipment and Contractors

For 2014, Agnico Eagle has contracted Orbit Garant for drill services. Up to two diamond drills are planned to be in operation in 2014. For helicopter support, Agnico Eagle has contracted Nunami Helicopter Transport Corp, one (1) helicopter should be on site between April and August.

Major Contractors

Diamond drilling	Orbit Garant Drilling	Val-d'Or, QC	819-824-2707
Helicopter	Nunami Helicopter	Carp, ON	613-839-5868

7. Period of Land Use Operation

April-August:

- Start surface diamond drilling, up to 2 rigs
- Surface exploration

8. Environmental Management

Waste

All solid waste generated at exploration sites will be brought to the Meadowbank mine and managed accordingly the waste management plan in effect.

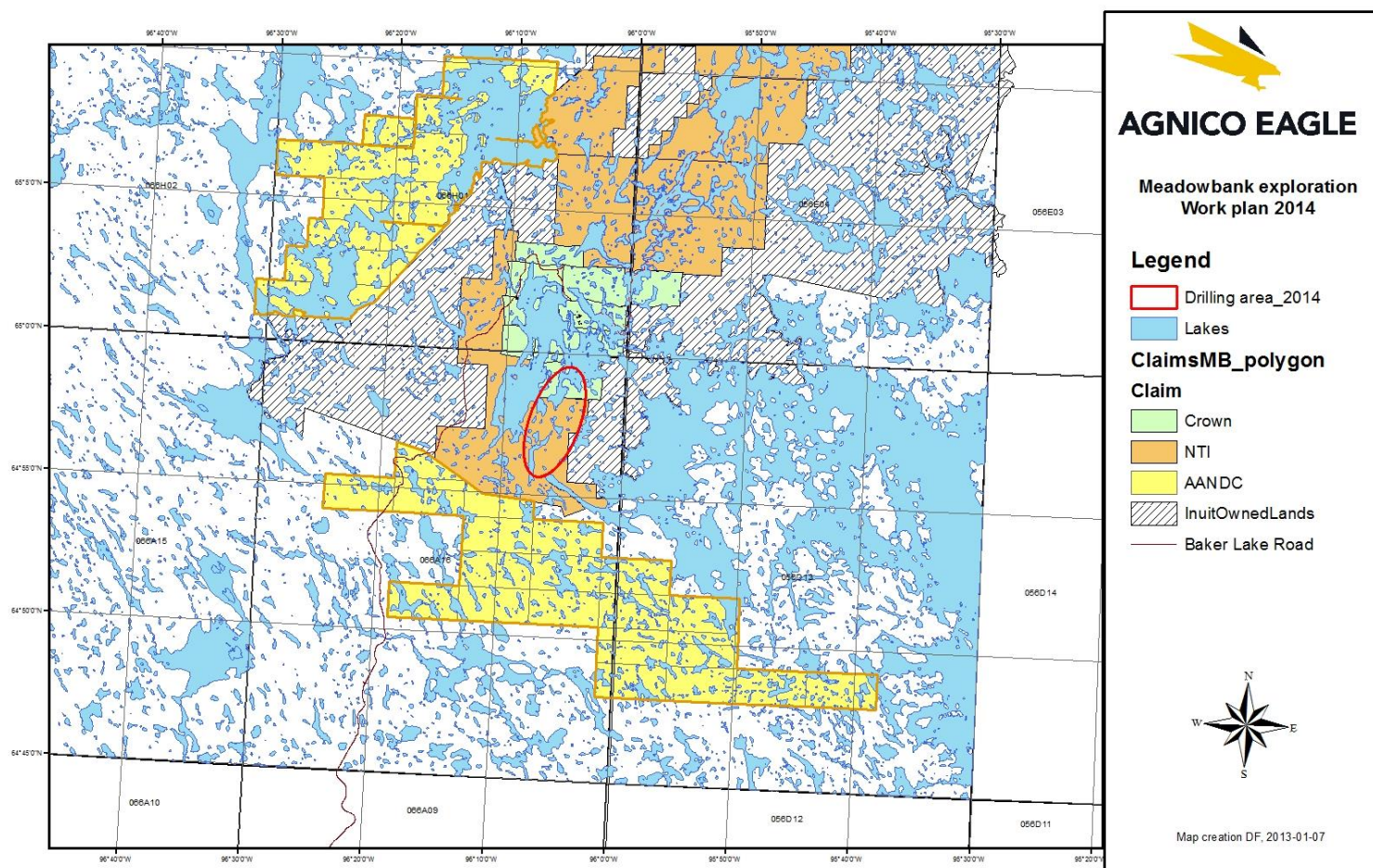
Spill Contingency Plan

The Meadowbank Gold Project Spill Contingency Plan, September 2012, is the current plan that applies to all aspects of the Meadowbank Project Exploration and associated activities.

Water Management

Exploration activities are conducted in conformity with the regulatory requirements set out by the Nunavut Water Board in Type B Water License 2BE-MEA0813.

Figure 1; Drilling Area



APPENDIX B

AEM 2013 Annual Report: License 2BE-MEA1318



AGNICO EAGLE
EXPLORATION

MEADOWBANK GOLD PROJECT

ANNUAL REPORT: LICENCE 2BE-MEA1318

PRESENTED TO THE NUNAVUT WATER BOARD

MARCH 2014

Contact:

David Frenette
Environment Coordinator
AGNICO EAGLE MINES LIMITED
Exploration Division Canada
C.P. 87
765, Chemin de la mine Goldex
Val-d'Or (Qc) Canada J9P 4N9

B2. The Licensee shall file an Annual Report on the appurtenant undertaking with the Board no later than March 31st of the year following the calendar year being reported which shall contain the following information:

a. A summary report of water use and waste disposal activities;

The Licence authorizes the use of a maximum of 269m³/day and we used an average of 44m³/day for the drill (the drill ran only 22 days in 2013) and an average of 2.7m³/day for the camp during the period it was opened (January to July).

b. A summary of waste disposal activities including volumes and locations of waste released including but not limited to, greywater and drill cuttings, procedures for disposal thereof, and results of any pre-release monitoring and/or treatment

Solid Waste:

All solid wastes are sorted at work sites and regularly transported to the Meadowbank mine site for proper disposal.

Greywater:

A “greywater” system was installed at the exploration camp. This system includes a grease trap that separates the grease, which is then collected and transported by vacuum/septic trucks to the Meadowbank mine site for disposal on a weekly basis. The greywater passes through a sump before being released into the environment.

Sewage:

All sewage water is directed to the sewage holding tank and is then transported to the Meadowbank mine site via vacuum/septic trucks for processing at the onsite sewage treatment plant.

Drill Waste

Cuttings: The drill cuttings are disposed in a natural topographic depression located at least 30 meters away from any water body, where there is no risk of runoff.

c. A summary of trenching and drilling operations;

Drilling

14 drill holes all located on IOL were made by Agnico Eagle Mines in 2013. Drill holes reclamation was completed during the program.

Trenches

No trench done in 2013.

d. A summary of construction activities or modifications carried out;

No construction activities.

e. A list of unauthorized discharges and a summary of follow-up actions taken;

No unauthorized discharge.

f. Any revisions to the Spill Contingency Plan and Abandonment and Restoration Plan, including contact information;

Please see Appendix A for the Spill Contingency Plan Updated on May 2013 and Appendix B for the Closure and Reclamation Plan Updated on December 2012.

g. A description of all progressive and or final reclamation work undertaken, including photographic records of site conditions before, during and after completion of operations;

Drill holes reclamation was completed during the program.

h. A summary of all information requested and results of the Monitoring Program; and

No information requests. See Part J of the Monitoring Program results.

i. Any other details on water use or waste disposal requested by the Board by November 1 of the year being reported.

No details were requested by the Board.

PART J: CONDITIONS APPLYING TO THE MONITORING PROGRAM

- 1. The Licensee shall measure and record, in cubic metres, the daily quantities of water utilized for camp, drilling and other purposes.**

	Domestic water m ³ /day	Water for drilling m ³ /day	Maximum total m ³ /day	Comments
January	4.3	0	4.3	
February	5	0	5	
March	4	0	4	
April	3.3	0	3.3	
May	1.1	0	1.1	
June	0.3	0	0.3	
July	0.6	43	43.6	1 day of drilling during the month
August	0	42	42	4 days of drilling during the month
September	0	50	50	10 days of drilling during the month
October	0	41	41	7 days of drilling during the month
November	0	0	0	
December	0	0	0	

- 2. The Licensee shall provide the GPS co-ordinates of all locations where sources of water are utilized for all purposes.**

Camp water intake (UTM Nad83, Zone 15): (351597,5;7215626,7)

Water sources for drilling location (UTM Nad83, Zone 14)

X	Y
606599	7256558
606665	7256246
606942	7256511
606931	7255920

- 3. The Licensee shall determine the GPS co-ordinates (in degrees, minutes and seconds of latitude and longitude) of all locations where wastes associated with camp operations and drilling operations are deposited.**

All waste is brought and managed at the Meadowbank mine site.

- 6. The Licensee shall obtain representative samples of the water column below any ice, where required under Part F, Item 6 and 7. Monitoring shall include, at a minimum, the following:**

Total Suspended Solids

pH

Electrical Conductivity, and

Total Trace Metals as determined by a standard ICP Scan (to include at a minimum, the following elements: Al, Sb, Ba, Be, Cd, Cr, Co, Cu, Fe, Pb, Li, Mn, Mo, Ni, Se, Sn, Sr, Tl, Ti, U, V, Zn), and

Trace Arsenic and Mercury

No ice drilling was conducted in 2013.

Appendix A

Spill Contingency Plan Updated on May 2013

[Spill Contingency Plan 2BE-MEA1318_May 2013docx.pdf](#)

Appendix B

Closure and Reclamation Plan Updated on December 2012

[Closure and Reclamation plan December 2012.pdf](#)

APPENDIX C

AEM 2013 Annual Report: Lease KVL312C03



AGNICO EAGLE

2013 Annual Report

IVR

Exploration

Project

Lease KVL312C03

Prepared for the Kivalliq Inuit Association

January 2014

Contact:

David Frenette

Agnico Eagle Mines Ltd

Environment Coordinator

C.P. 87

765 Chemin de la mine Goldex

Val-d'Or, Quebec, J9P4N9

david.frenette@agnicoeagle.com

1. Introduction

Agnico Eagle Mines Limited (AEM) signed an exploration agreement with the Nunavut Tunngavik Inc. in January 2013 for the IVR property. This property is located approximately 50 km North East of the Meadowbank mine and 125 km North of the Baker Lake community. The mineral exploration aims gold mineralization.

2. Water Licence

The water licence related to this area is the 2BE-MEA1318. The annual report will be submitted to the Nunavut Water Board for March 31st and a copy will be sent to the KIA at the same moment.

3. Environment monitoring reports

The report for the water monitoring will be included in the 2BE-MEA0813 annual report and sent to the KIA.

4. Reclamation work undertaken or required to be undertaken in accordance with this lease:

Drilling

Fourteen (14) drilling holes (Figure 1) were done in 2013 for a total length of 2,332 meters. As requested by the KIA, we calculated the land use fees related to the drilling, using a buffer of one (1) hectare for each drilling site. The total area for these sites is 11.2 hectares (Figure 2).

Table 1: Final fees for 2013

2013 Drilling areas	Number of sites	Areas (ha)	Fees
IVR area	14	11.2	560

Figure 1: Drilling locations

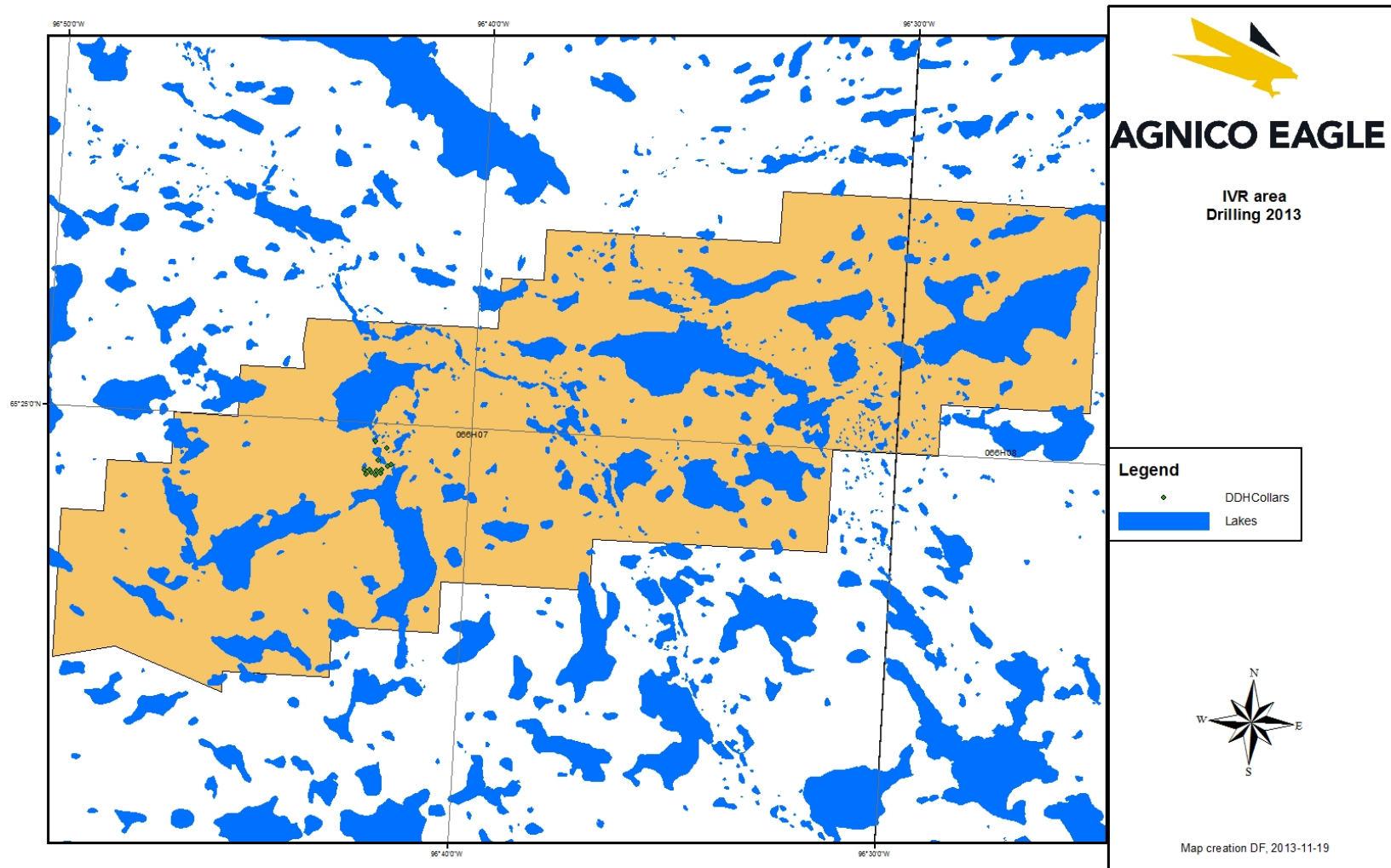


Figure 2: Zoom on the area to pay

