

December 01, 2009

Via Email and Xpresspost

Mr. Richard Dwyer
Licensing Administrator
Nunavut Water Board
P.O. Box 119
Gjoa Haven, NU X0B 1J0
Phone: (867) 360-6338
licensingadmin@nunavutwaterboard.org

Dear Mr. Dwyer,

Re: Water License 2AM-MEA0813 Part E, Item 11

In accordance with Water License 2BE-MEA0813, Part E, Item 11:


'The Licensee shall provide to the Board for review, within ninety (90) days of completion of camp construction and operation, topographical plans and drawings to a suitable scale showing the new camp facilities and layout, including all components of the camp in relation to surrounding environment, including camp structures, water source, waste disposal sump, fuel storage areas, and maintenance buildings'; please find two drawings enclosed:

091201 2BE-MEA0813 Meadowbank Exploration Camp: showing the Meadowbank Exploration camp in relation to the Meadowbank All Weather Private Access Road and Third Portage Lake (camp water source); and

091201 2BE-MEA0813 Meadowbank Exploration Camp – Detail: showing a detailed view of the camp including all camp structures, waste disposal system and fuel storage area.

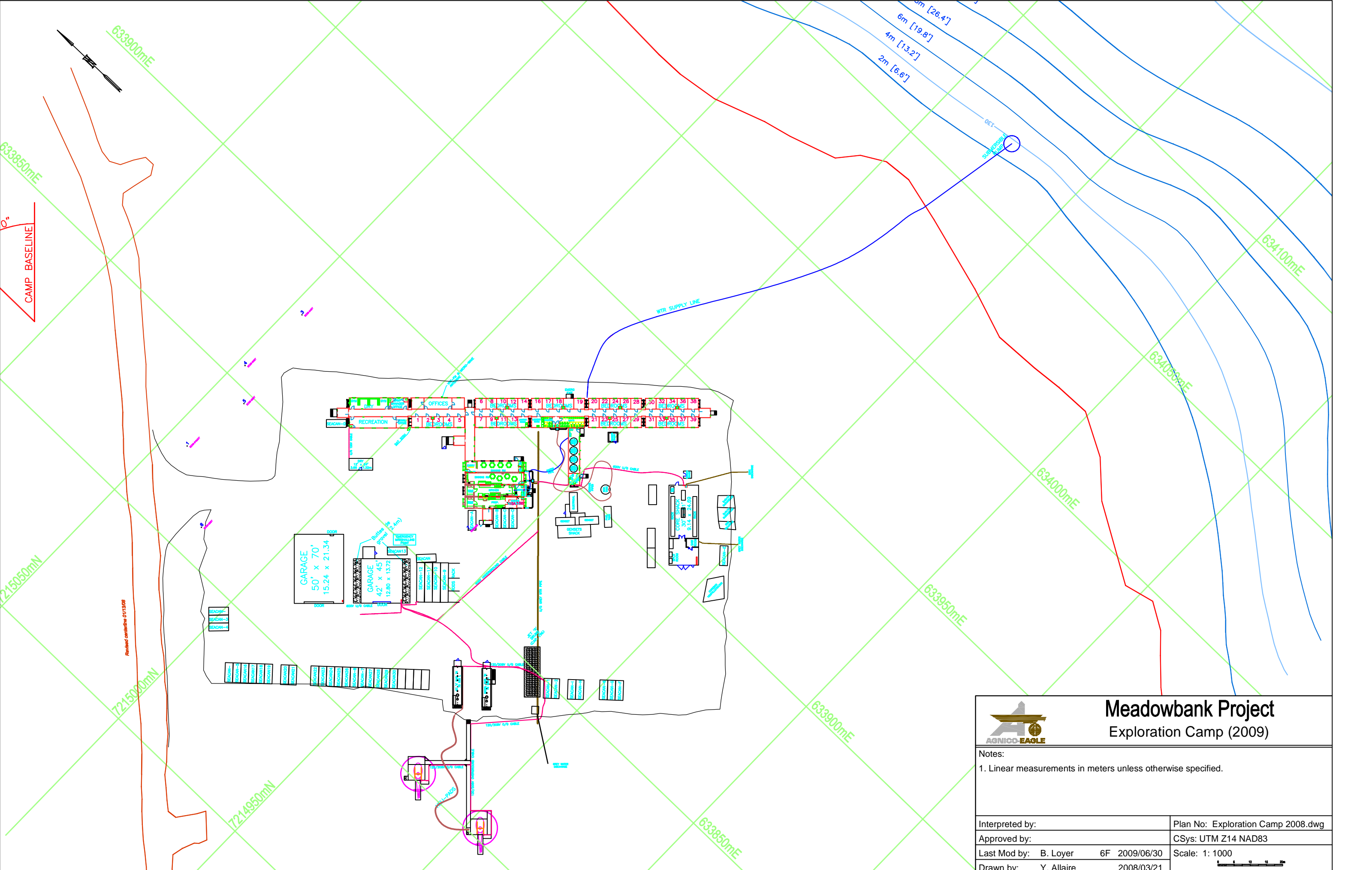
If you have any questions or comments, please contact me directly via email at denis.vaillancourt@agnico-eagle.com or by telephone at 819-874-5890 ext. 3605.


Regards,



Denis Vaillancourt
Senior Geologist

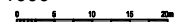
cc: Guy Gosselin, AEM

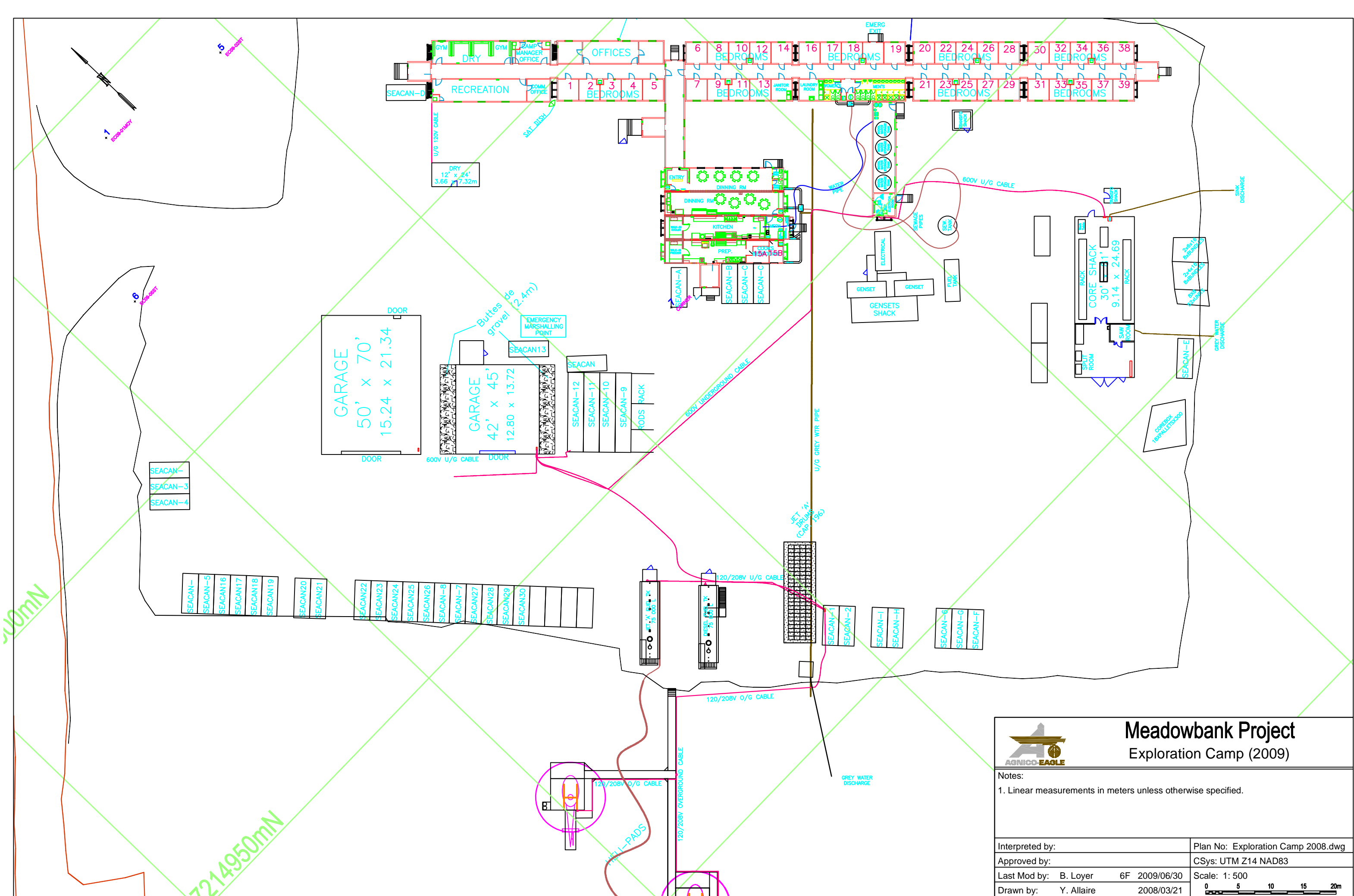





Meadowbank Project
Exploration Camp (2009)

Notes:
1. Linear measurements in meters unless otherwise specified.

Interpreted by:	Plan No: Exploration Camp 2008.dwg
Approved by:	CSys: UTM Z14 NAD83
Last Mod by: B. Loyer 6F 2009/06/30	Scale: 1: 1000
Drawn by: Y. Allaire 2008/03/21	





Meadowbank Project

Exploration Camp (2009)

Notes:
1. Linear measurements in meters unless otherwise specified.

Interpreted by:	Plan No: Exploration Camp 2008.dwg
Approved by:	CSys: UTM Z14 NAD83
Last Mod by: B. Loyer 6F 2009/06/30	Scale: 1: 500
Drawn by: Y. Allaire 2008/03/21	