



Photo 15      20 June 2002. Tern Lake outlet channel looking north. Discharge measurement in progress.



Photo 16      21 June 2002. Drilltrail Lake outlet channel looking east. Discharge measurement in progress.



Photo 17      23 June 2002. 3PL west outlet channel looking west. Discharge measurement in progress.



Photo 18      25 June 2002. 2PL outlet channel looking northeast. Discharge measurement in progress.

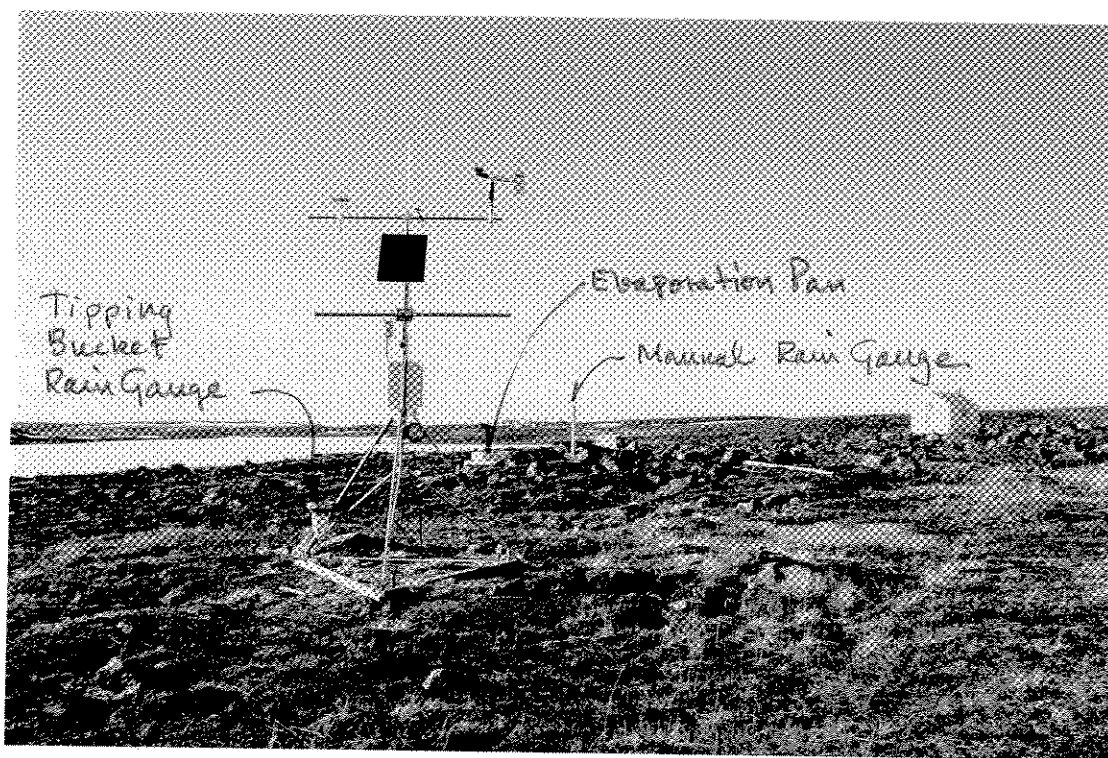


Photo 19 25 June 2002. Automated climate station, with evaporation pan in background.



Photo 20 25 June 2002. Evaporation pan station and manual rain gauge.

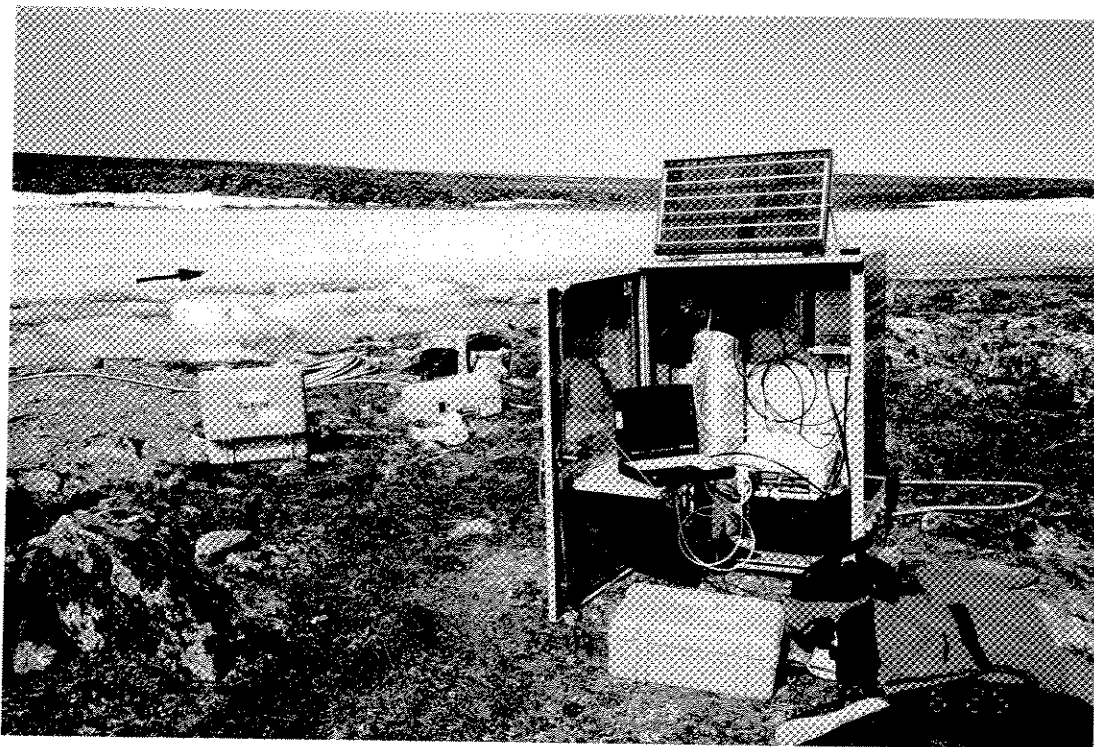


Photo 21      25 June 2002. Installation of 3PL west outlet channel automated water level monitoring station.

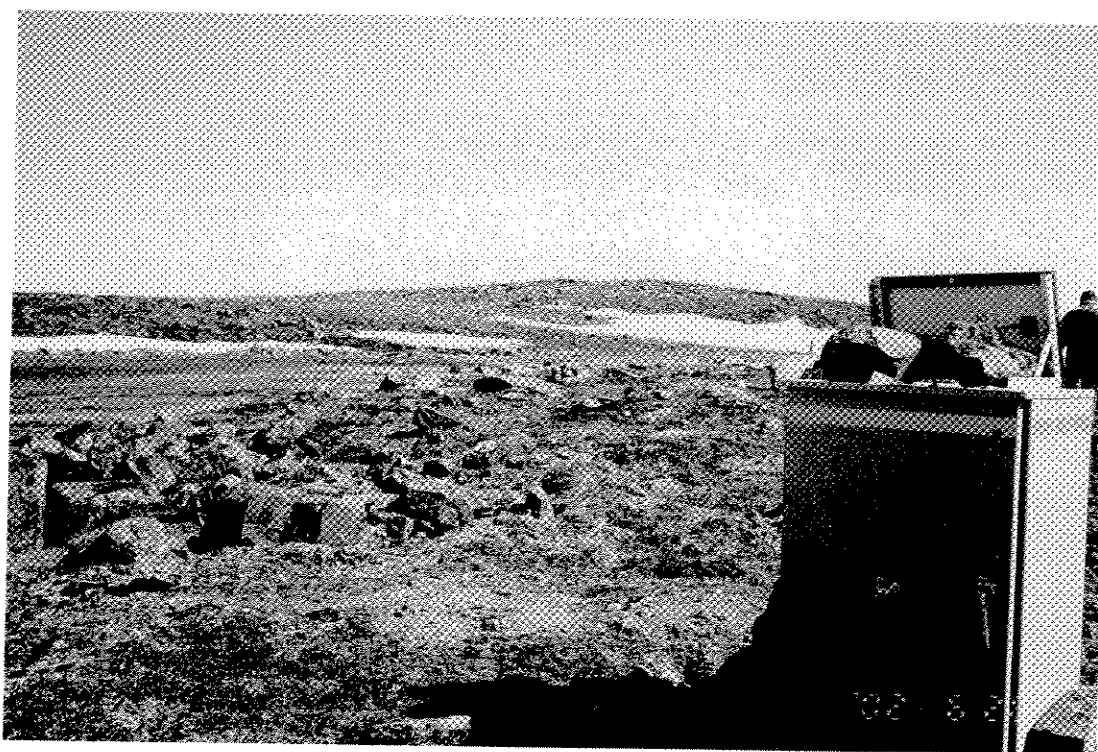


Photo 22      26 June 2002. Drilltrail Lake automated water level monitoring station installed.