



Photo 459 - Juvenile Arctic grayling (FL: 48 mm).



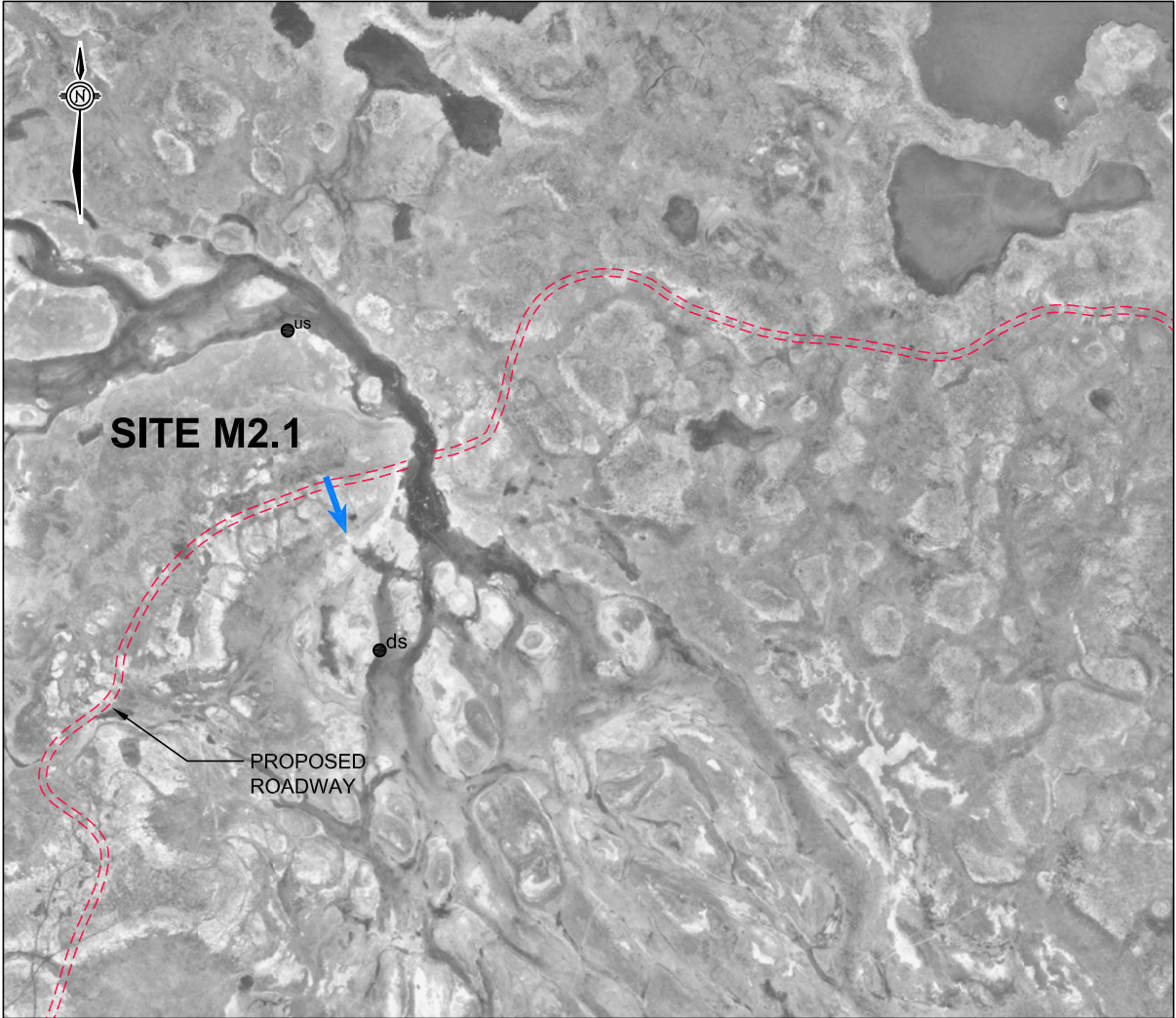
Photo 462 - Upstream view 200 m upstream from proposed crossing location.



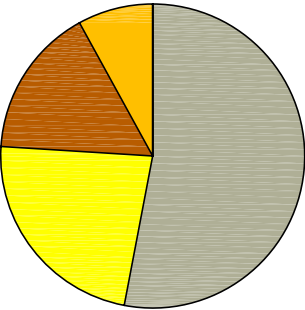
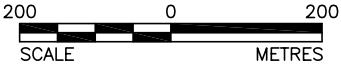
Photo 467 - Upstream view from 400 m upstream from proposed crossing location.



Photo 474 - Downstream view from 690 m upstream from proposed crossing location.

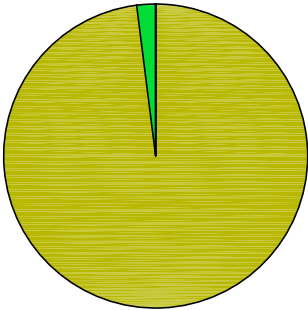


REFERENCE
IMAGE OBTAINED FROM COMAPLEX MINERALS CORPORATION. PROJECTION:
TRANSVERSE MERCATOR DATUM: NAD 83 COORDINATE SYSTEM: UTM ZONE 15



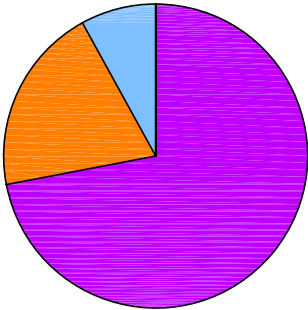
SUBSTRATE

- DETRITUS
- FINES
- GRAVEL
- COBBLE
- BOULDER



INSTREAM COVER

- VEGETATION
- BOULDER GARDENS
- UNDERCUT BANKS



HABITAT TYPE

- RIFFLES
- RUNS
- POOLS

Site M2.1
Date of Survey: June 20, 2008


Upstream UTM: 544595 E, 6971835 N
Downstream UTM: 544731, E 6971455 N

Water Quality:	
Time	08:30
Temperature	3.0 °C
Conductivity	N/A
pH	N/A
DO	10 to 12 mg/L

Channel:	
Stream length surveyed	690.0 m
Mean channel width	N/A
Mean flooded width	120.0 m
Discharge	N/A

Fish Captured / Observed:			
Method	Capture (n)	Size range (mm)	Effort
E-fishing	ARGR (1)	48	557 s
Observations	NNST (2)	<100	—
Egg sampling	—	—	4 kicks

* N/A = Not Assessed

PROJECT				
COMAPLEX MELIADINE WEST GOLD PROJECT				
TITLE				
AQUATIC HABITAT SUMMARY FOR SITE M2.1				
	PROJECT 07.1373.0055.4000			FILE No. 1732934
	DESIGN	RP	30/09/08	SCALE AS SHOWN
	CADD	FN	21/10/08	REV. 0
	CHECK	RP	20/11/08	FIGURE: C1
	REVIEW	JP	20/11/08	