

USFilter

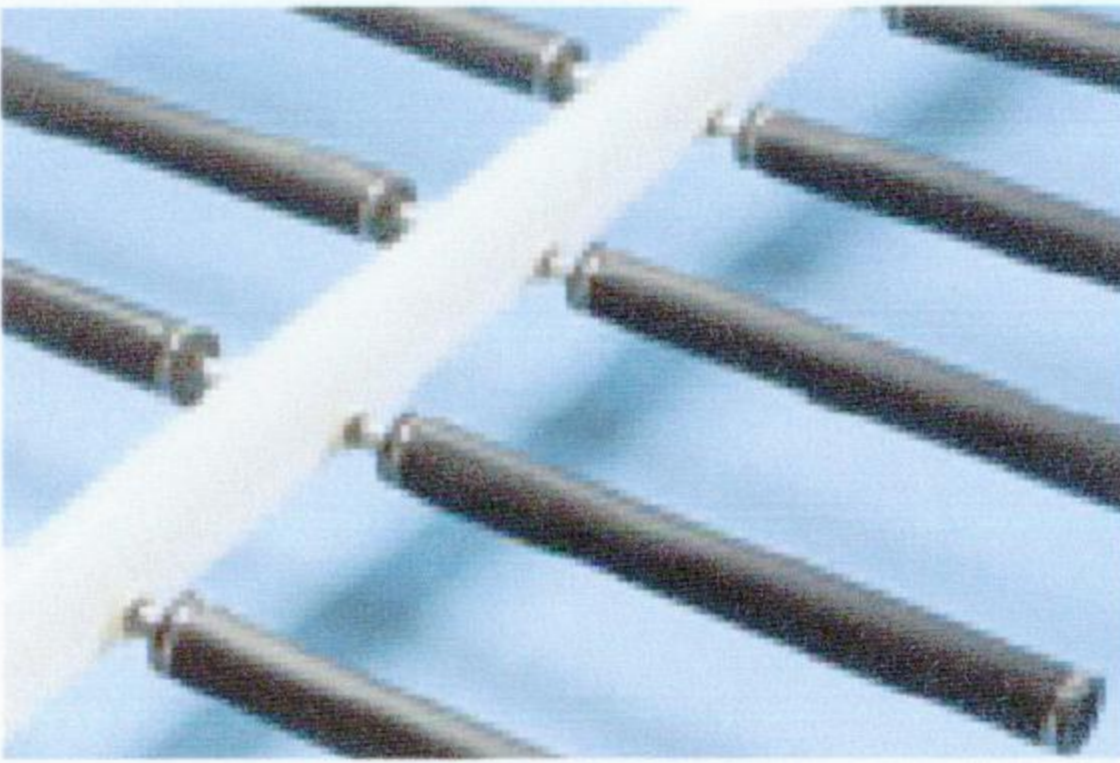
FLEXLINE™

NONBUOYANT

TUBULAR

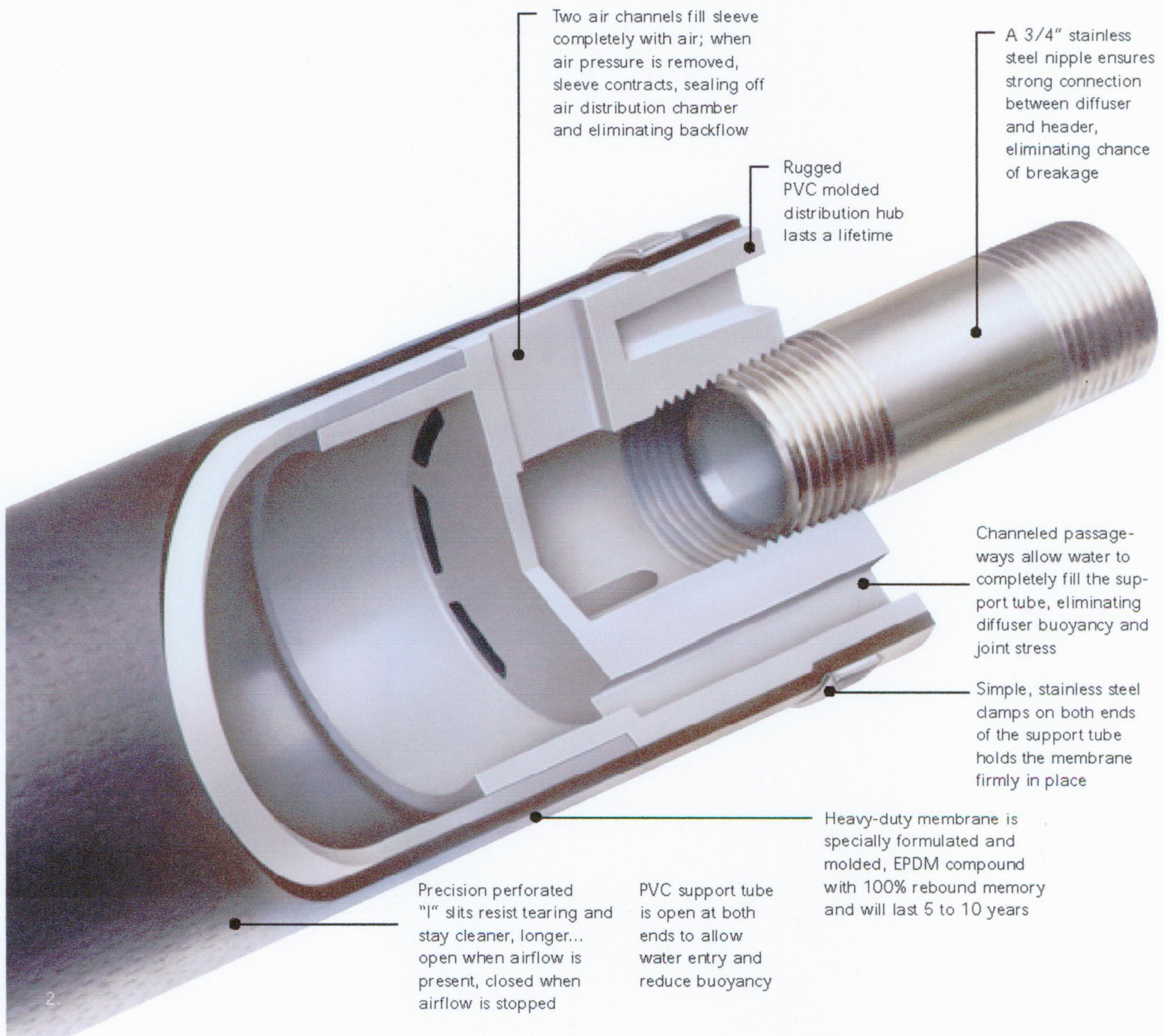
FINE BUBBLE DIFFUSER

THE FLEXLINE FINE BUBBLE AIR DIFFUSER – THE CLEAR CHOICE



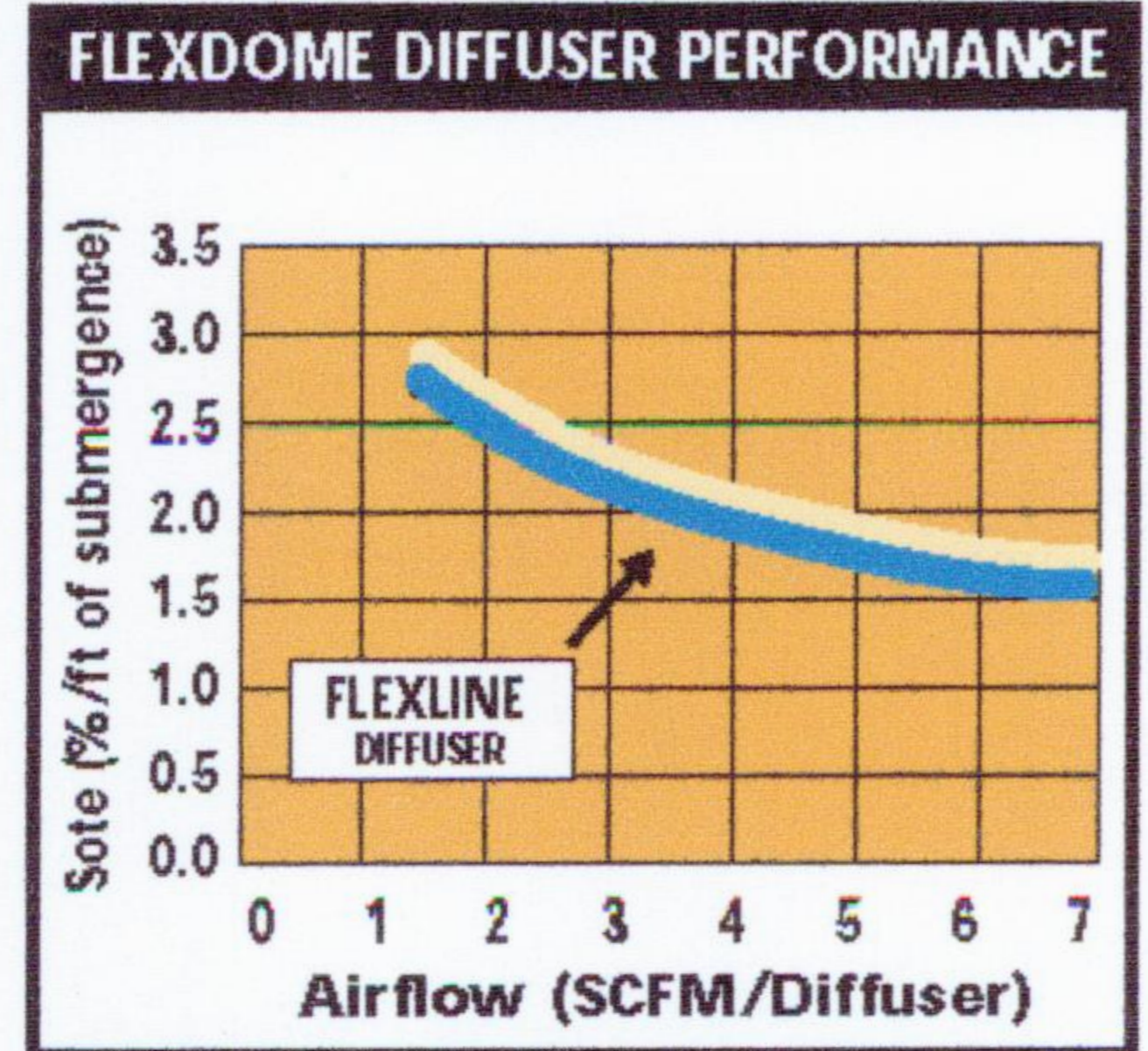
A typical FlexLine tubular fine bubble diffuser arrangement.

Tubular fine bubble FlexLine diffusers have many operating advantages over coarse bubble type diffusers. The FlexLine diffuser produces micro-fine bubbles that increase the bubble surface contact area with the water, greatly increasing the oxygen transfer and efficiencies resulting in lower air volume requirements. The higher transfer efficiencies assure lower energy costs and improved effluent quality. While other diffusers emit a narrow column of air, FlexLine produces a broad envelope of bubbles that greatly increases transfer efficiency and improves mixing.



HIGHER AIRFLOW,
BETTER PERFORMANCE

FlexLine diffusers can often outperform disk type fine bubble diffusers. Because FlexLine diffusers are 24" long and have 8400 bubble producing "I" slits, you can realize flow ranges up to 7 CFM and still maintain high oxygen transfer efficiencies and low headloss. This could substantially reduce the number of diffusers required thereby providing a more economical installation. FlexLine's flexible membrane sleeve with precision perforated "I" slits expands to produce fine bubbles then contracts immediately sealing itself when the air supply is stopped. This feature dramatically reduces the chance for backflow of solids to clog the diffuser.

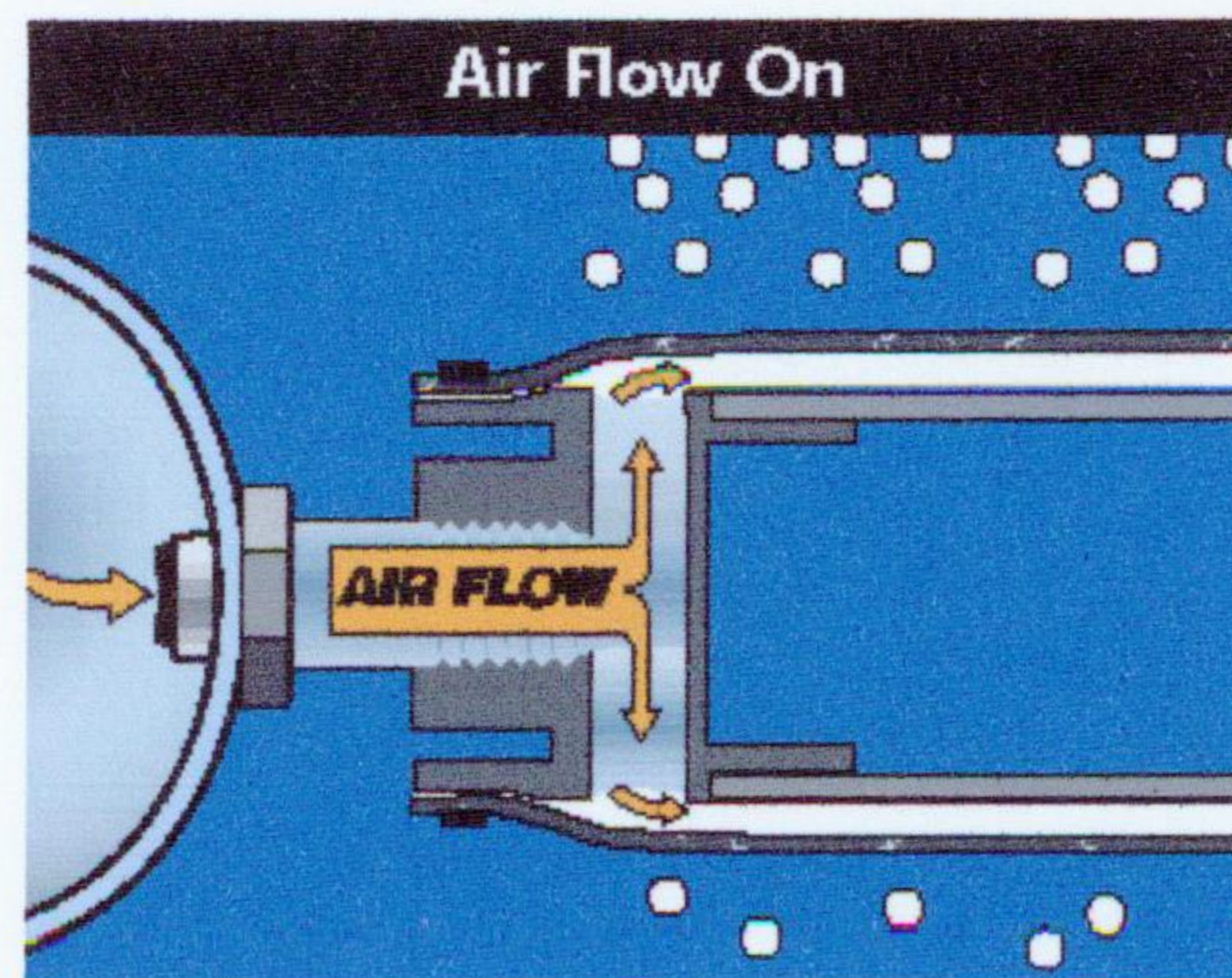


FlexLine Diffusers provide superior oxygen transfer efficiency over a wide range of airflow rates.

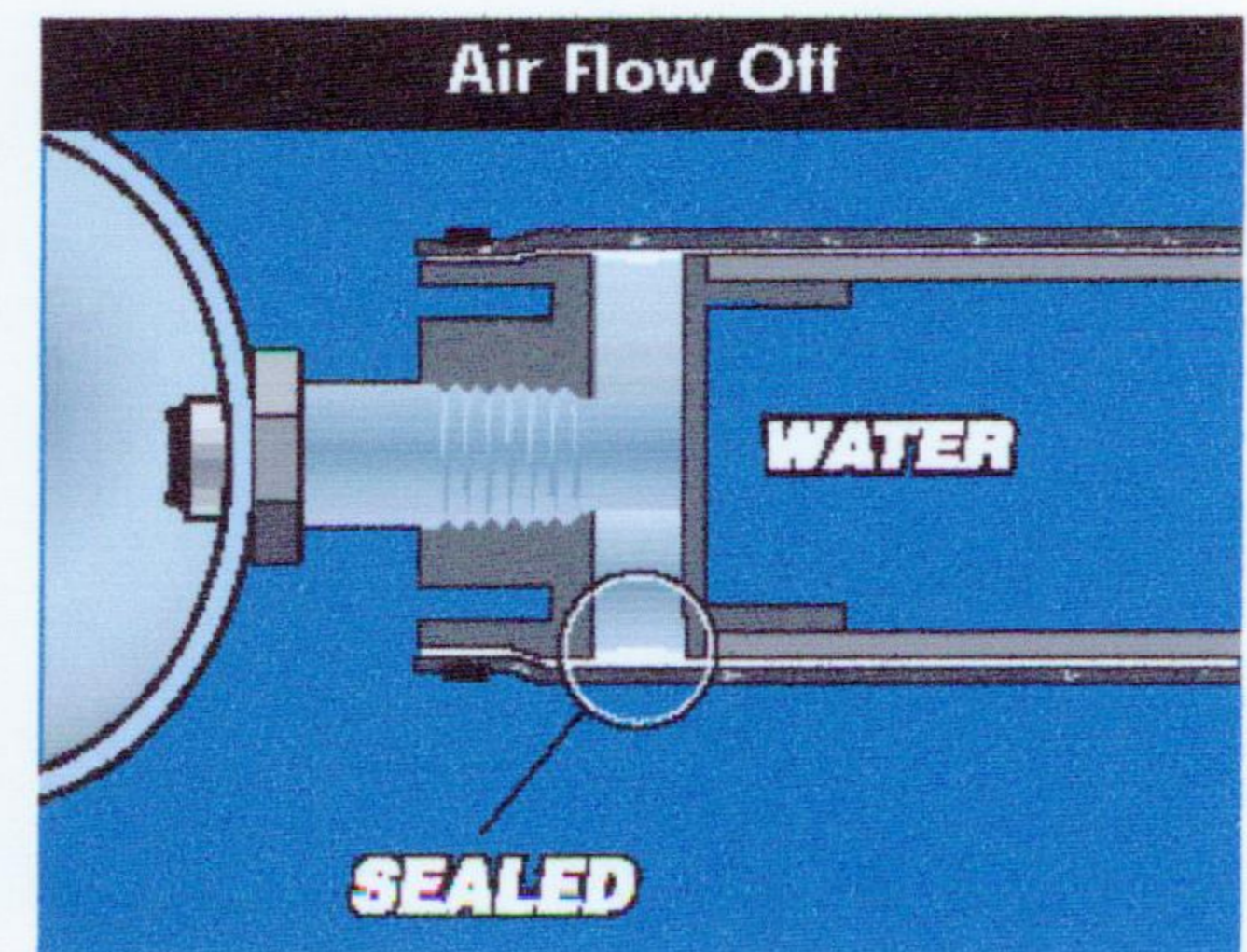
NON-BUOYANT DESIGN
IMPROVES RELIABILITY

FlexLine's open end tube design allows water to completely fill the diffuser support tube. This eliminates diffuser

buoyancy and resulting diffuser bounce during operation, the major cause of nipple end connection failure.



When airflow is present, sleeve inflates around exterior of support tube, creating uniform air distribution over entire membrane surface. Larger perforated surface area greatly increases transfer efficiency.



The FlexLine support tube is open at both ends, allowing water to completely fill the tube, thus eliminating buoyancy and bounce that weakens joints and causes leakage that affect most other systems. When airflow is off, membrane contracts and seals off distribution chamber, eliminating chance of backflow.

YOUR ONE SOURCE FOR AIR DIFFUSERS

USFilter offers the most complete line of fine and coarse bubble, plastic, stainless steel and membrane/ceramic air diffusers of any company in the industry, guaranteeing you'll find the right diffuser for your application. We also offer full technical support to assist you with everything from air diffuser selection to complete aeration piping systems design. For new installations, retrofit, or replacement, we're your one source.

Coarse Bubble Diffusers	Fine Bubble Diffusers
	
SED DIFFUSER	FLEXDISC DIFFUSER (THREADED CONNECTION)
	
VARIAIR DIFFUSER	FLEXDOME DIFFUSER (CERAMIC DOME REPLACEMENT)
	
SNAP-CAP DIFFUSER	DUALAIR MEMBRANE & CERAMIC DIFFUSER
	
AIRSEAL DIFFUSER	FLEXLINE TUBULAR DIFFUSER
	
WIDEBAND STAINLESS STEEL DIFFUSER	
	
AIRBAND WIDEBAND PLASTIC DIFFUSER	

To find out more about how to put USFilter to work for you, contact us at

USFilter

Envirex Diffused Air Products

P.O. Box 1604

Waukesha, WI 53189

877.616.3327 toll free

262.547.0141 phone

262.521.8338 fax

envirexdiffusedair@usfilter.com e-mail

www.usfilterenvirex.com

©2000USFilter

Products manufactured and marketed by USFilter's Envirex Products are protected by patents issued or pending in the United States and other countries.



INLINE FANS

better AIRFLOW
by DESIGN™



AXC INLINE FANS

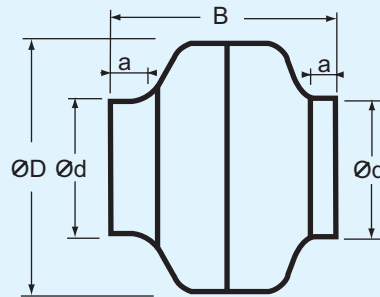
- Heavy-gauge, drawn steel housing with baked epoxy finish
- Exceptionally quiet and efficient BI motorized impeller
- Precision balanced for quiet and vibration-free operation
- Automatic reset thermal overload protection
- Enclosed ball-bearing motors are permanently lubricated
- 115/1/60 standard, other voltages available
- Speed Controllable
- Fans are easily installed in flexible or rigid duct

PERFORMANCE DATA

MODEL NO.	WATTS	RPM	dBA	CUBIC FEET PER MINUTE										
				0"SP	1/8"SP	1/4"SP	3/8"SP	1/2"SP	3/4"SP	1"SP	1 1/4"SP	1 1/2"SP	2"SP	3"SP
AXC100A	55	1750	44	106	99	93	87	80	68	55	39			
AXC100B	85	2400	54	152	146	139	131	124	106	82	66	33		
AXC125A	62	1650	36	159	127	100	82	68	34					
AXC125B	85	2350	53	212	185	162	145	128	79	32				
AXC150A	80	2500	54	247	225	202	178	161	132	92	50			
AXC150B	72	2580	55	309	271	237	202	171	132	107	88	15		
AXC200A	72	2550	56	418	397	366	339	306	233	174	110	56		
AXC200B	160	2700	60	636	618	557	521	494	412	353	271	190	78	
AXC250	250	2650	63	695	659	610	541	500	359	279	197	125	41	
AXC315A	190	2650	68	865	824	765	736	677	553	459	365	283	124	
AXC315B	345	2765	74	1198	1165	1052	981	945	796	615	453	363	178	65
AXC355A	334	1360	57	1325	1220	1105	985	860	688	550	400	238		
AXC355B	830	2900	77	1400	1375	1360	1335	1285	1220	1135	1075	1000	880	675

DIMENSIONS IN INCHES

MODEL NO.	D (in.)	d (in.)	a (in.)	B (in.)	WEIGHT (lbs)
AXC100A	9.5	3.9	1.0	8.3	6.5
AXC100B	9.5	3.9	1.0	8.3	6.5
AXC125A	9.5	4.8	1.0	8.3	6.5
AXC125B	9.5	4.8	1.0	8.3	6.5
AXC150A	9.5	5.8	1.0	8.3	6.5
AXC150B	13.2	5.8	1.0	9.1	11.0
AXC200A	13.2	7.8	1.0	9.1	11.0
AXC200B	13.2	7.8	1.0	9.1	11.0
AXC250	13.2	9.8	1.0	9.1	11.0
AXC315A	15.9	12.4	1.2	11.6	18.0
AXC315B	15.9	12.4	1.2	12.0	20.0
AXC355A	19.0	14.0	1.5	15.7	26.0
AXC355B	19.0	14.0	1.5	15.7	31.0



Note: AXC models 100A through 315B are UL and CSA listed products.



Note: AXC models 355A and 355B are CSA listed to both US and Canadian standards.

AXC ACCESSORIES



ADJUSTABLE GRILLE
FOR SUPPLY OR EXHAUST



MOUNTING CLAMPS
FOR USE WITH RIGID DUCT



BACKDRAFT DAMPER
WITH SPRING RETURN



SOLID STATE VARIABLE
SPEED CONTROL

CENTRIFUGAL IMPELLERS



MOTORIZED IMPELLERS



CENTRIFUGAL FANS



IRIS DAMPERS



USA

www.continentalfan.com

Continental Fan Manufacturing Inc.
203 Eggert Road
Buffalo, New York 14215
Tel: (800) 779 4021 Fax: (716) 842 0611

Canada

www.aeroflo.com

Aeroflo Inc.
12-205 Matheson Blvd. East
Mississauga, Ontario L4Z 3E3
Tel: (905) 890 6192 Fax: (905) 890 6193

AXC INLINE FANS



沃易泵业

WATEREASY PUMPS

GO →

Company Brief

News & Events

Products

Faq

Online Order

Contact Us

◀ Home ▶

Pond - Fountain Pumps—>Pond Pumps —>WPG Type



Specifications

Model	Flow Rate	Max. Head	Voltage/Frequency	Power	Approvals
WPG-160	600L/h(160g/h)	110cm(3.6ft)	220-240V/50Hz 120V/60Hz	8w	UL/CUL/GS/SAA/CE
WPG-200	750L/h(200g/h)	160cm(5.2ft)		12w	
WPG-275	1000L/h(275g/h)	190cm(8.5ft)		16w	
WPG-400	1500L/h(400g/h)	250cm(8.2ft)		25w	
WPG-550	2000L/h(550g/h)	320cm(10.5ft)		45w	
WPG-900	3500L/h(900g/h)	400cm(8.5ft)		60w	UL/CUL/GS/CE
WPG-1000	4000L/h(1000g/h)	300cm(10ft)		70w	UL/CUL/GS/SAA/CE
WPG-1500	5500L/h(1500g/h)	420cm(13.2ft)		99w	UL/CUL/GS/CE
WPG-1600	6000L/h(1600g/h)	550cm(18ft)		190w	UL/CUL/GS/SAA/CE
WPG-2000	8000L/h(2000g/h)	470cm(15.8ft)		190w	

Interest in Products

Name : *

Tel : *

Fax :

Email : *

Text :

Interest

Copyright @ 2004 - 2005 pumpseek.com Allrights Reserved

闽ICP备05006696号后台管理