



RECEIVED

By Manager of Licensing at 1:46 pm, Sep 20, 2011

21 July 2011

Ms. Phyllis Beaulieu
Licencing Coordinator
Nunavut Water Board
P.O. Box 119
Gjoa Haven
NU, X0B1J0

Luis Manzo
Director of Lands
Kivalliq Inuit Association
P.O. Box 340
Rankin Inlet
NU, X0C0G0

Re: Water Licence 2BB-MEL0914: Clause D.4: Request to establish a landfill within the Commercial Lease at the Meliadine Gold Project

Dear Ms. Beaulieu and Mr. Manzo,

Agnico-Eagle Mines Limited (AEM) has used the Rankin Inlet landfill up to the early part of 2011. This was carried out under an agreement renewed annually with the hamlet. Non-hazardous, solid waste was transported from the Meliadine site to Rankin Inlet via winter road or by helicopter. However, with the Meliadine camp continuing to grow, using the Rankin Inlet landfill is no longer viable. As a result, AEM would like to establish a landfill for solid, non-hazardous material at the location shown on the two figures. One figure shows the location in relation to the portal and road infrastructure while the other shows where it is located on commercial lease KVCL102J168. The proposed location is more than 31 metres from water.

AEM will continue its present practise of burning all household and kitchen waste. The ash from the incinerator will go to the landfill. No household or kitchen waste will be directed to the landfill without first burning it. Normal landfill practices will be employed in covering the waste on a regular basis.

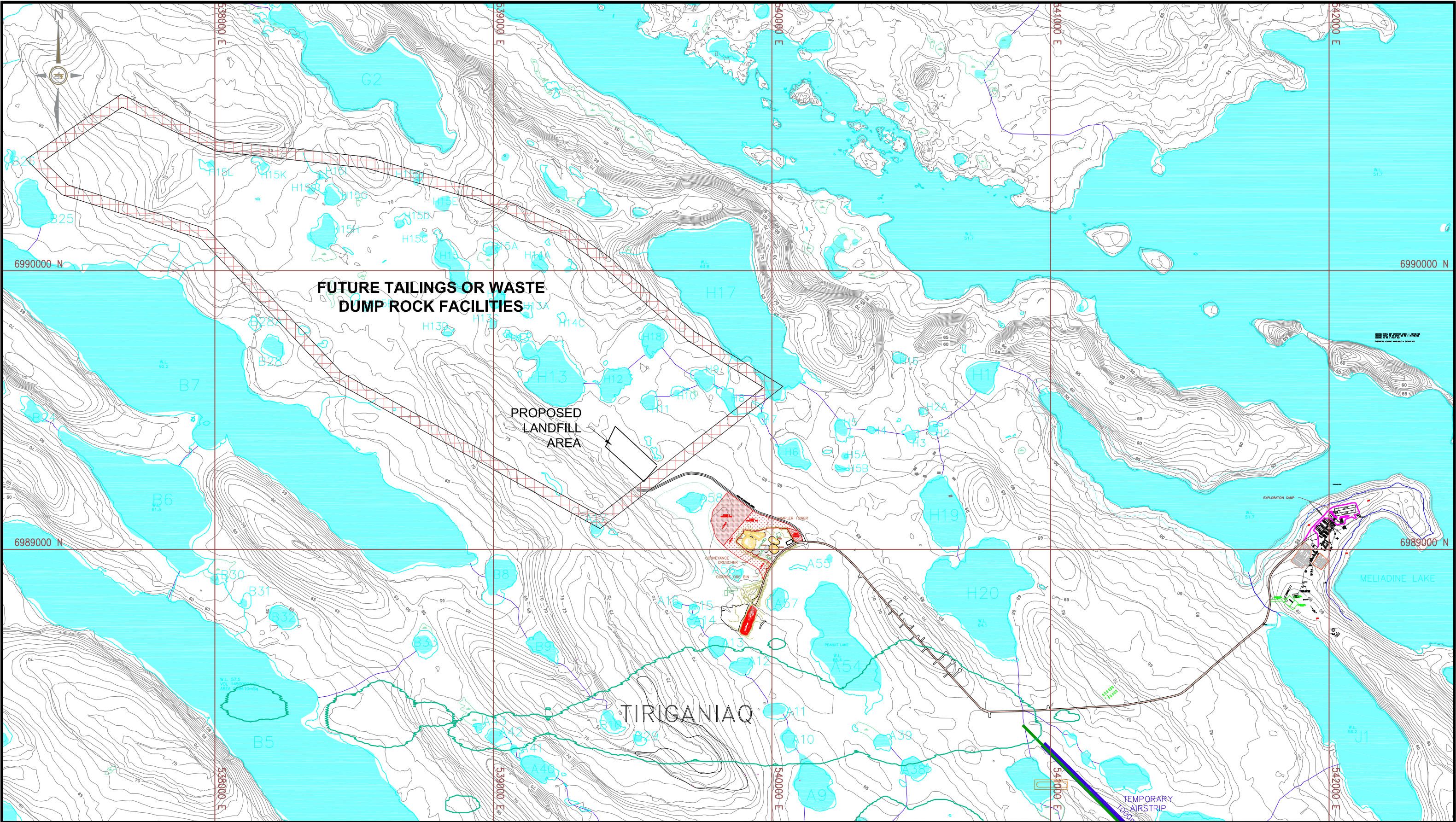
Should the Board and the KIA approve the use and location of the landfill, AEM will amend its Waste Management Plan to include the operation of the landfill.

If you have any questions or concerns, please do not hesitate in getting in touch with me at 819 277 5444 or jwitteman@agnico-eagle.com.

Yours sincerely,

John Witteman

C.c. Sylvain Doire, David Frenette – AEM
Veronica Tattuinee - KIA



DESSINÉ PAR
DRAWN BY J.CRETE

APPROUVÉ PAR
APPROVED BY S.DOIRE

DATE 2011-07-05

DATE 2011-07-05

ÉCHELLE
SCALE 1:12 500



AGNICO-EAGLE – MELIADINE DIVISION
PROPOSED LANDFILL AREA

