



View looking northeast showing general location of sample SC27, July 2, 2006.



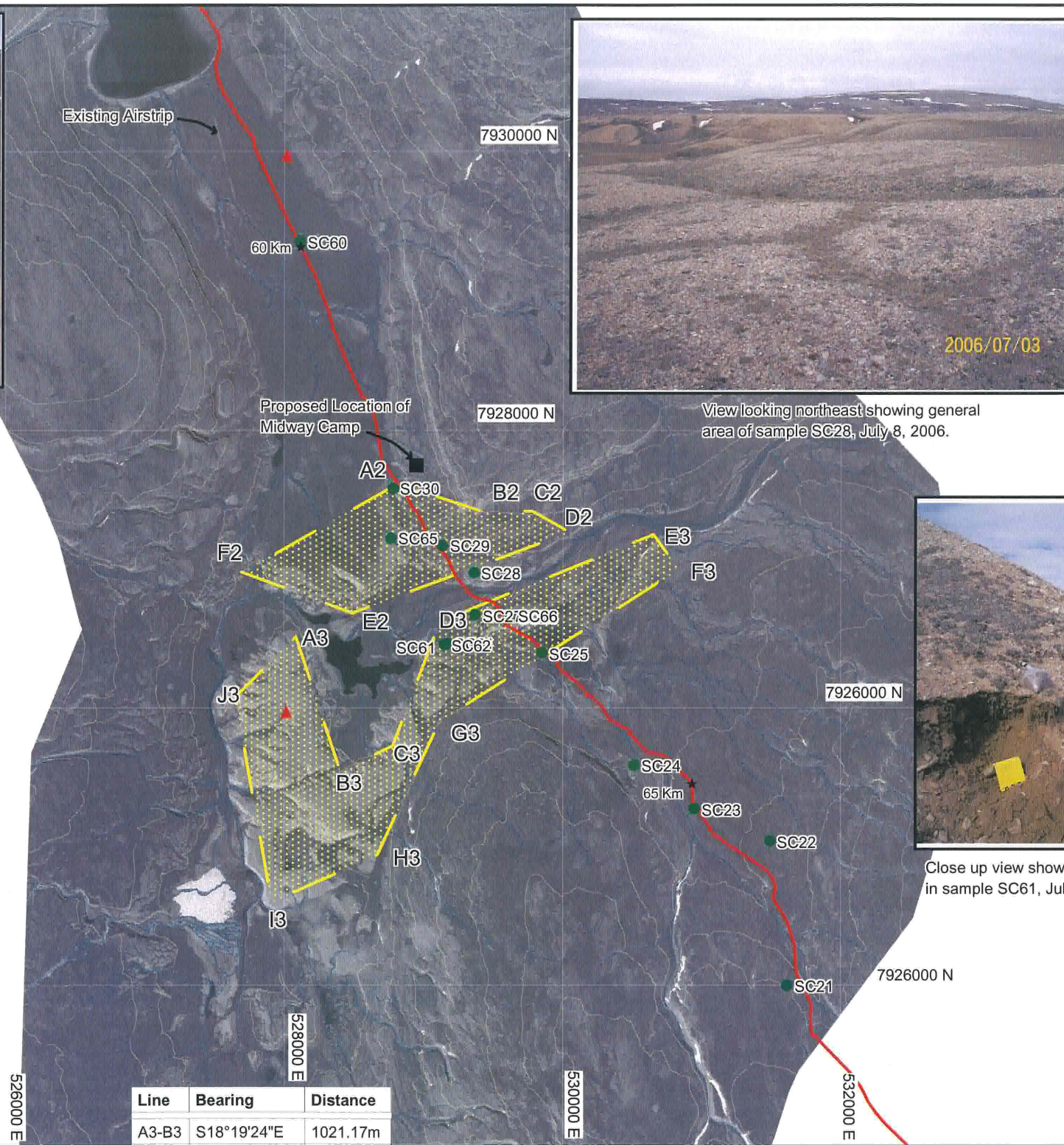
View looking northeast showing general area of sample SC28, July 8, 2006.



View looking south showing location of sample SC61, July 8, 2006.

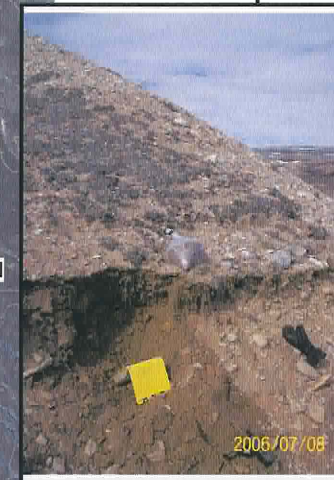
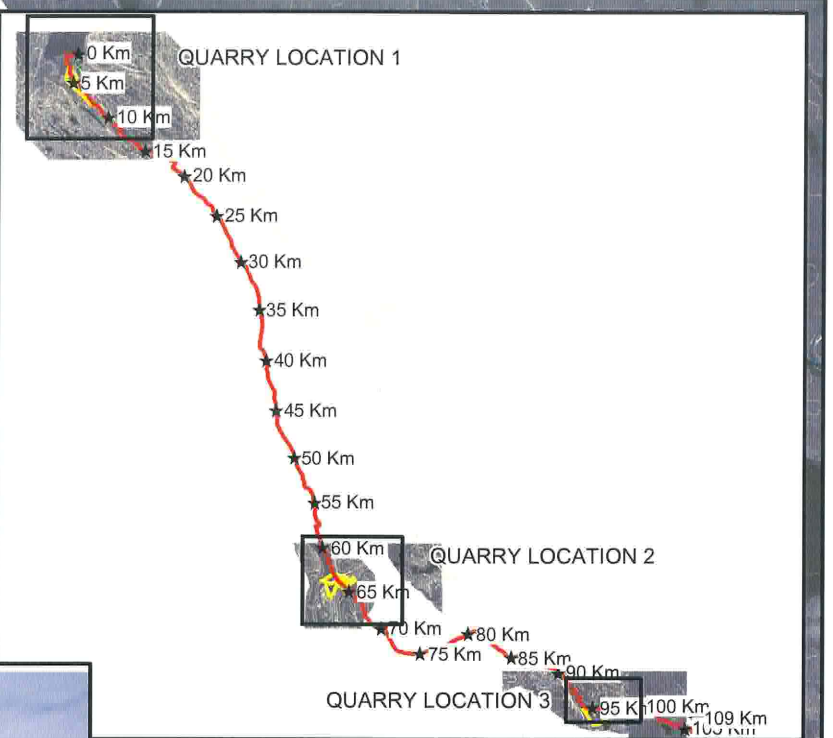
Line	Bearing	Distance
A2-B2	S71°51'57"E	669.72m
B2-C2	N88°03'30"E	328.14m
C2-D2	S60°22'37"E	307.48m
D2-E2	S69°28'39"W	1659.41m
E2-F2	N69°25'48"W	839.76m
F2-A2	N20°09'26"E	1278.10m

Line	Bearing	Distance
A3-B3	S18°19'24"E	1021.17m
B3-C3	N64°12'18"E	419.49m
C3-D3	N20°28'03"E	954.1m
D3-E3	N67°42'52"E	1659.92m
E3-F3	S35°56'32"E	311.01m
F3-G3	S57°29'17"W	2037.86m
G3-H3	S24°53'38"W	1061.75m
H3-I3	S65°56'59"W	834.09m
I3-J3	N9°53'48"W	1501.62m
J3-A3	N45°00'00"E	614.25m

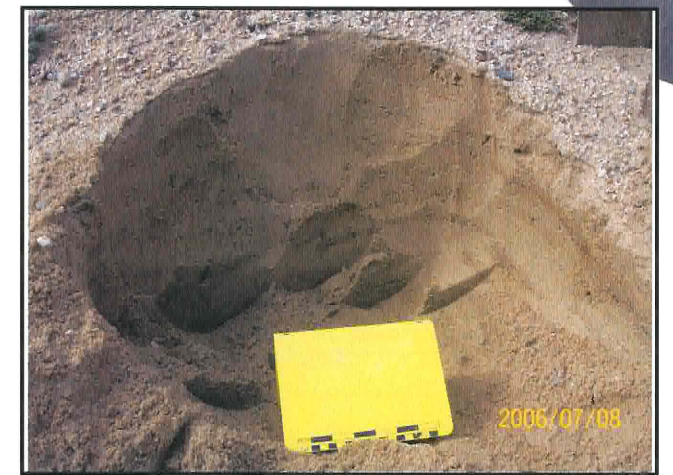


- LEGEND:**
- Existing Tote Road
 - Maximum Extent of Identified Borrow Sources
 - River/Stream
 - Control Point (Eagle Mapping)
 - Soil Sample Location
 - Proposed Location of Midway camp

- NOTES:**
- Airphotos provided by Eagle Mapping (2005).
 - Contour interval is 25 metres and was provided by Eagle Mapping.
 - Coordinate grid is shown in UTM (NAD83) Zone 17 and is in metres.



Close up view showing material in sample SC61, July 8, 2006.



Close up view of sample SC62 pit, July 8, 2006.

MARY RIVER PROJECT - BULK SAMPLING PROGRAM

BORROW SOURCE ALONG ROAD

P/A NO.
NB102-00181/6

REF.
1

REV.
0

FIGURE 2.28