

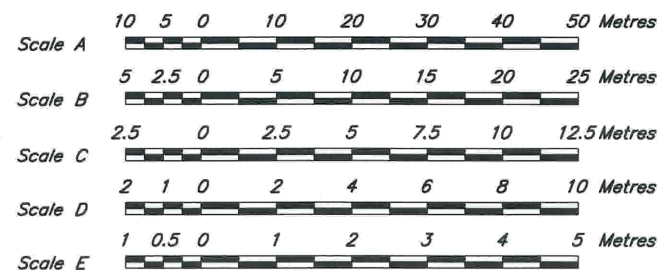
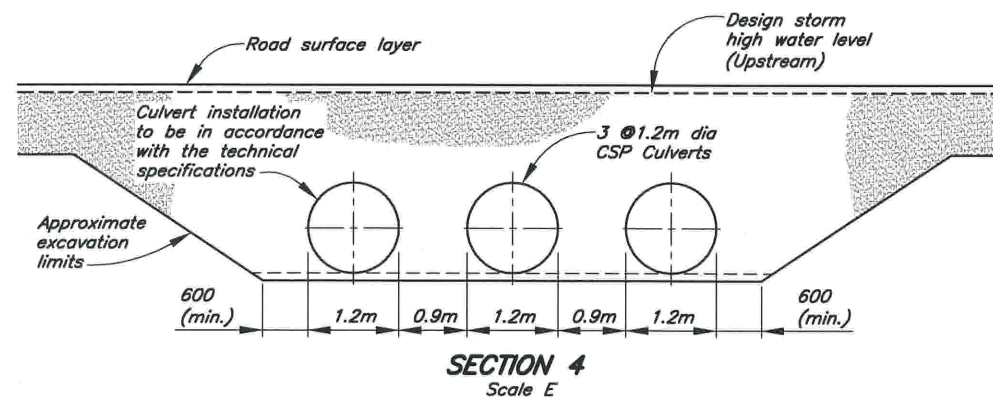
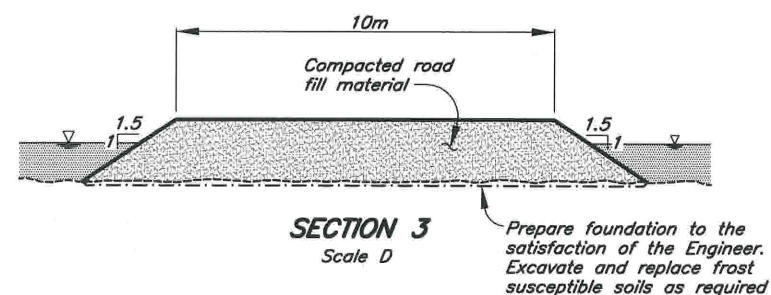
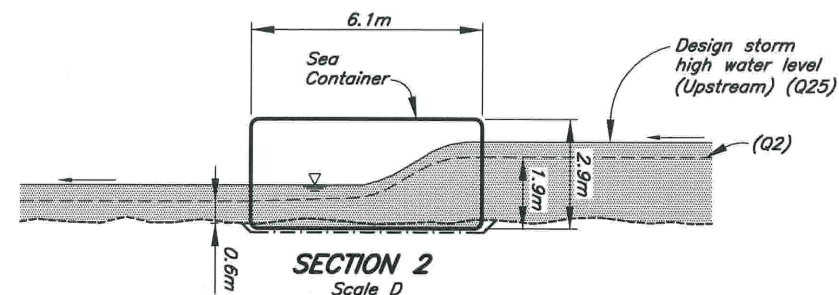
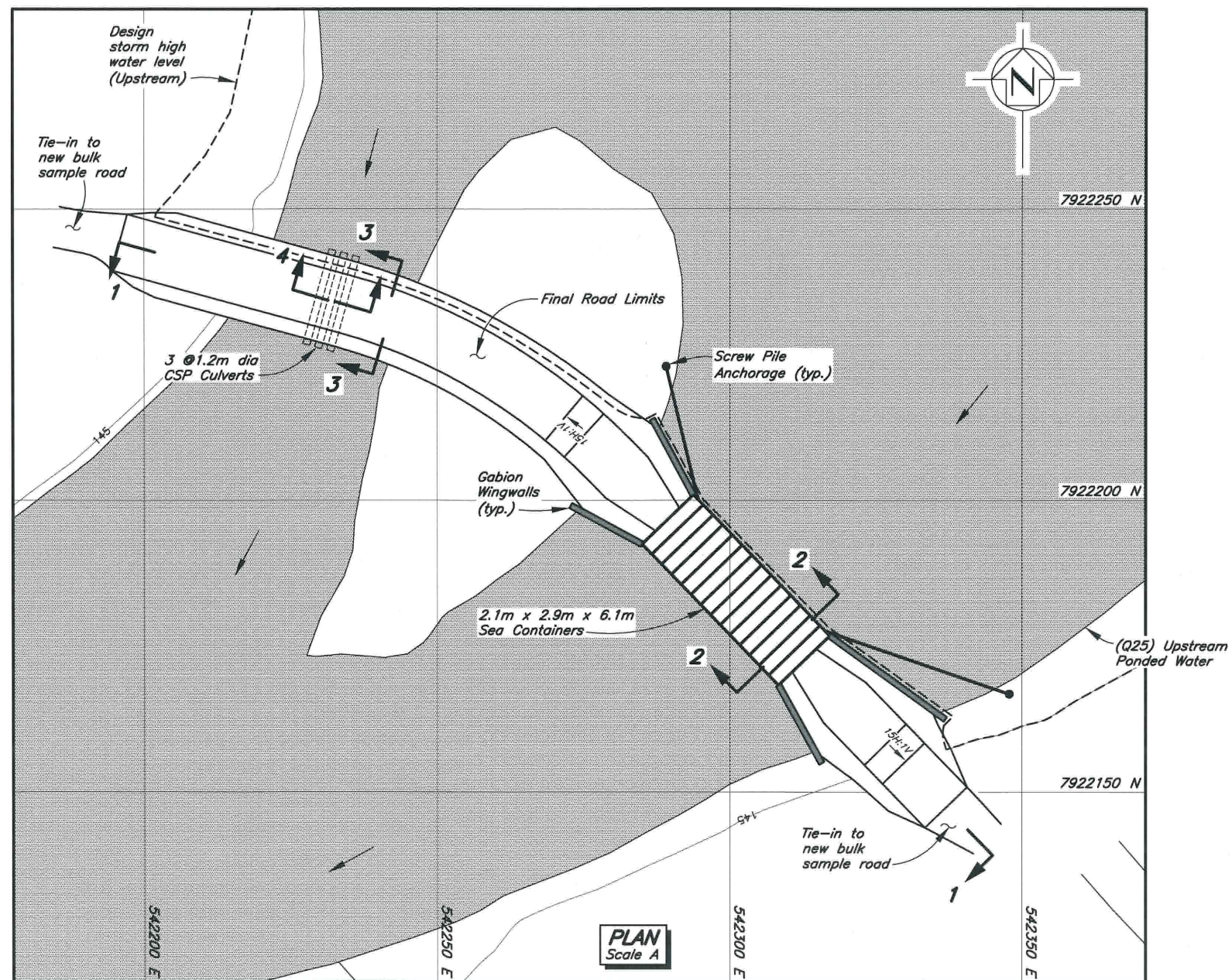
SECTION 1
Horizontal: Scale B
Vertical: Scale C

LEGEND:

- Water
- Compacted road fill
- Critical backfill zone
- Screw Pile
- Foundation preparation limits
- Original ground approx.

NOTES:

1. Mapping provided by Eagle Mapping (2006).
2. Contours are in metres, contour intervals is 5 metres.
3. Original ground profile determined from initial site assessment of crossings.
4. Sea Containers fabricated.
5. Critical backfill zone equal to $\frac{1}{2}$ of sea container width to consist of well graded free draining sand and gravel with maximum particle size of 75mm. Critical backfill zone shall be compacted using vibrating or tamping equipment running parallel with the length of the Sea Container at all times.
6. Design storm for extra large category crossing is 1 in 25 year return.
7. All installations and construction to be carried out in accordance with the Technical Specifications.



MARY RIVER PROJECT – BULK SAMPLING PROGRAM

DESIGN FOR EXTRA-LARGE CROSSING

SITE STATION CV217

P/A NO.
NB102-00181/6

REF.
1

REV.
0

FIGURE 2.24