

## TRANSMITTAL

1650 Main Street West  
North Bay, ON P1B 8G5  
Tel: 705-476-2165  
Fax: 705-474-8095

**TO:** Baffinland Iron Mines Corporation  
1016 - 120 Adelaide Street West  
Toronto, Ontario  
Canada, M5H 1T1

**DATE:** March 21, 2011

**FILE NO.:** NB102-181/25-A.01

**ATTENTION:** Mr. James (Jim) Millard

**CONT. NO.:** NB11-00161

**RE: Requested Drawings**

ITEM NO.	DESCRIPTION
1.	One (1) complete stamped set of the drawings originally sent out under Continuity No. NB09-00084, dated February 3, 2009 - Milne Inlet Tote Road - Summary of As-Built Final Alignment and Water Crossing Installation Locations (electronically and hardcopy)
2.	One (1) complete stamped set of the drawings originally sent out under Continuity No. NB09-00618, dated December 18, 2009 - Milne Inlet Tote Road - Summary of As-Built Water Crossing Installations and Borrow Area Locations for 2009 (electronically and hardcopy)

**REMARKS:**

Signed:



Caroline Duval  
Senior Administrative Assistant

Approved:



Steven R. Aiken, P.Eng.  
Manager Environmental Services

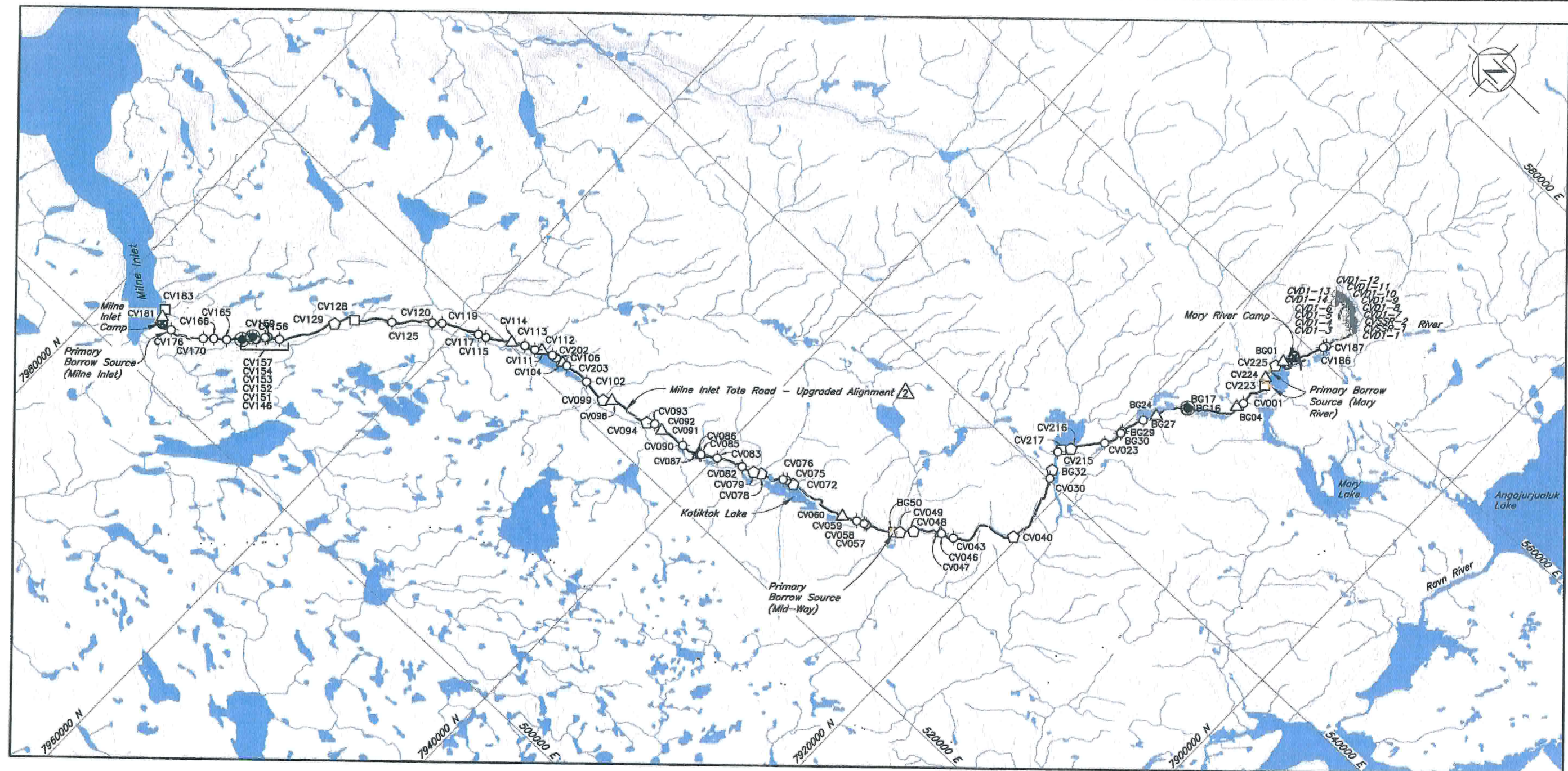












**LEGEND:**

-  *Water*  
 *Milne Inlet Tote Road – Upgraded Alignment*   
 *Airstrip*  
 *Exploration Camp Location*  
 *Culvert Locations*
-  *Extra Small Crossing*  
 *Small Crossing*  
 *Medium Crossing*  
 *Large Crossing*  
 *Extra Large Crossing*

NOTES:

1. *Base Map: © Her Majesty the Queen in Rights of Canada, Department of Natural Resources, (2004). All rights reserved.*
2. *Contours are in metres. Contour interval varies.*
3. *Coordinate grid is shown in UTM (NAD 83) Zone 17 and is in metres.*
4. *Milne Inlet Tote Road alignment survey provided by Genivar (Survey Completed in July 2008).*



***Knight Piésold***  
CONSULTING



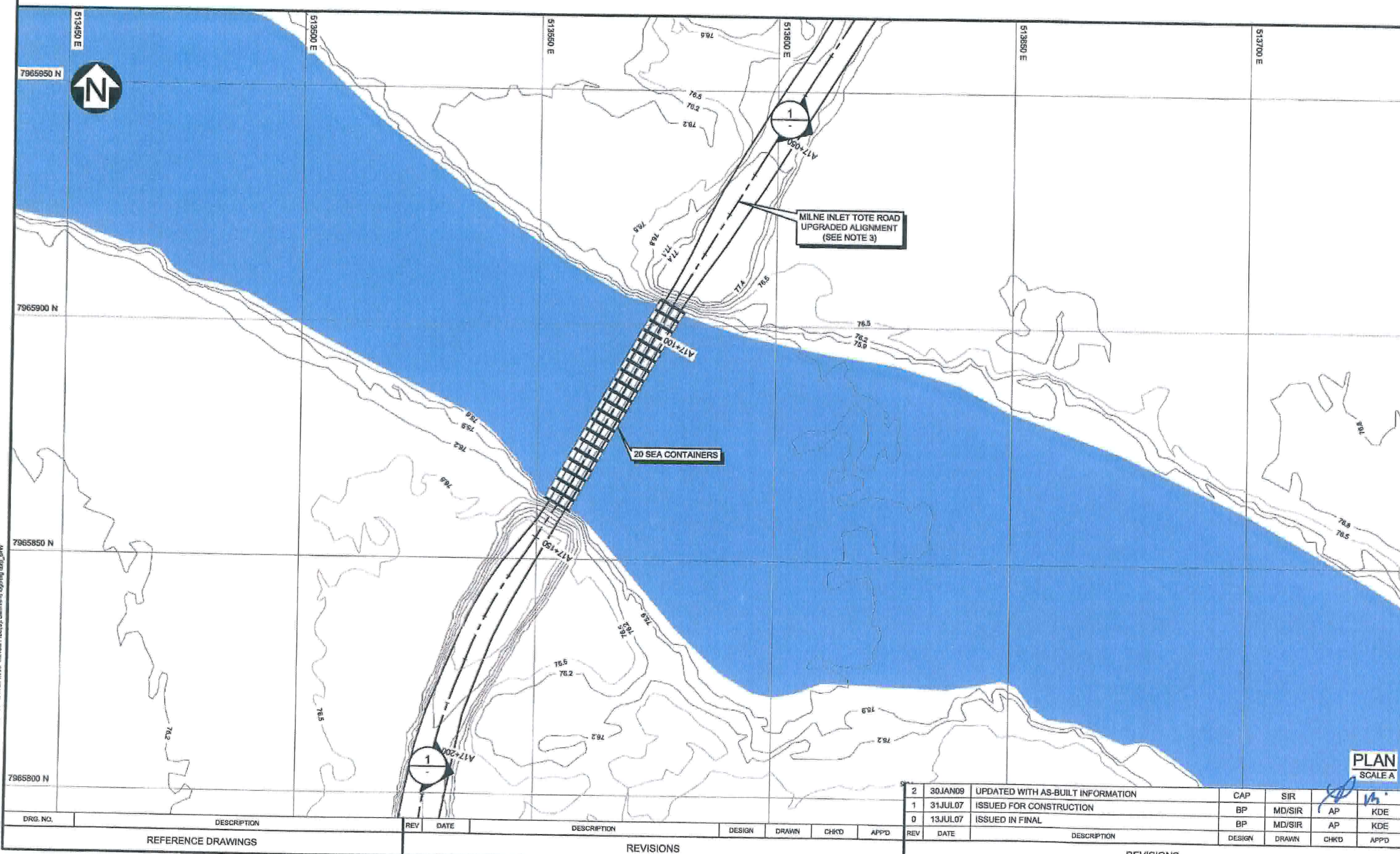
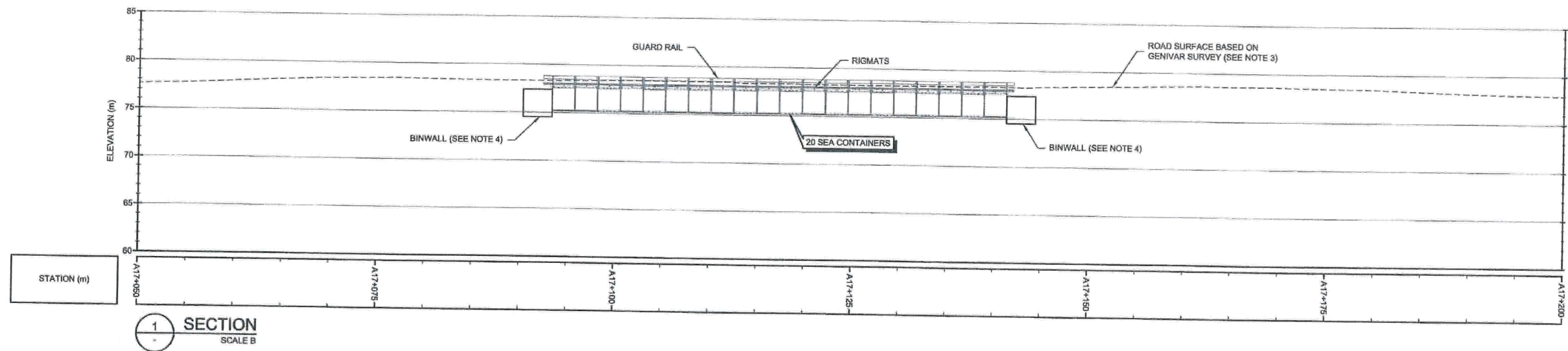
**Baffinland**  
Iron Mines Greenland/1944

**MARY RIVER PROJECT - BULK SAMPLING PROGRAM**

**DRAINAGE CROSSING LOCATIONS PLAN  
(ALL CROSSINGS)**

[illegible]





## AS-CONSTRUCTED

### LEGEND:

- WATER
- MAJOR CONTOUR
- MINOR CONTOUR
- ROAD SURFACE BASED ON GENIVAR (SEE NOTE 3)
- ROAD ALIGNMENT (SEE NOTE 3)

### NOTE(S):

1. COORDINATE GRID IS UTM (NAD83) ZONE 17 AND IS IN METRES.
2. CONTOURS BASED ON LIDAR SURVEY COMPLETED NOVEMBER 2008. CONTOUR INTERVAL IS 0.3 METRES.
3. AS-CONSTRUCTED ROAD ALIGNMENT PROVIDED BY GENIVAR DATED JULY 2008.
4. BINWALL LOCATIONS AND ELEVATIONS ARE APPROXIMATE AND WERE NOT SURVEYED.



THIS DRAWING WAS PREPARED BY KNIGHT PIESOLD LTD. FOR THE ACCOUNT OF THE CLIENT LISTED ON THIS DRAWING. THE MATERIAL ON IT REFLECTS KNIGHT PIESOLD'S BEST JUDGMENT IN THE LIGHT OF THE INFORMATION AVAILABLE TO IT AT THE TIME OF PREPARATION. ANY USE WHICH A THIRD PARTY MAKES OF THIS DRAWING, OR ANY RELIANCE ON OR DECISIONS TO BE MADE BASED ON IT, ARE THE RESPONSIBILITY OF SUCH THIRD PARTIES. KNIGHT PIESOLD ACCEPTS NO RESPONSIBILITY FOR DAMAGES, IF ANY, SUFFERED BY THE THIRD PARTY AS A RESULT OF SUCH RELIANCE. ANY ACTION BASED ON THIS DRAWING, COPIES RESULTING FROM ELECTRONIC TRANSFER OR REPRODUCTION OF THIS DRAWING ARE UNCONTROLLED AND MAY NOT BE THE MOST RECENT EDITION OF THE DRAWING.

DISCLAIMER

K.E. HAWTON  
MAR 21 2011

**Knight Piesold**  
CONSULTING

**Baffinland**  
IRON MINES CORPORATION

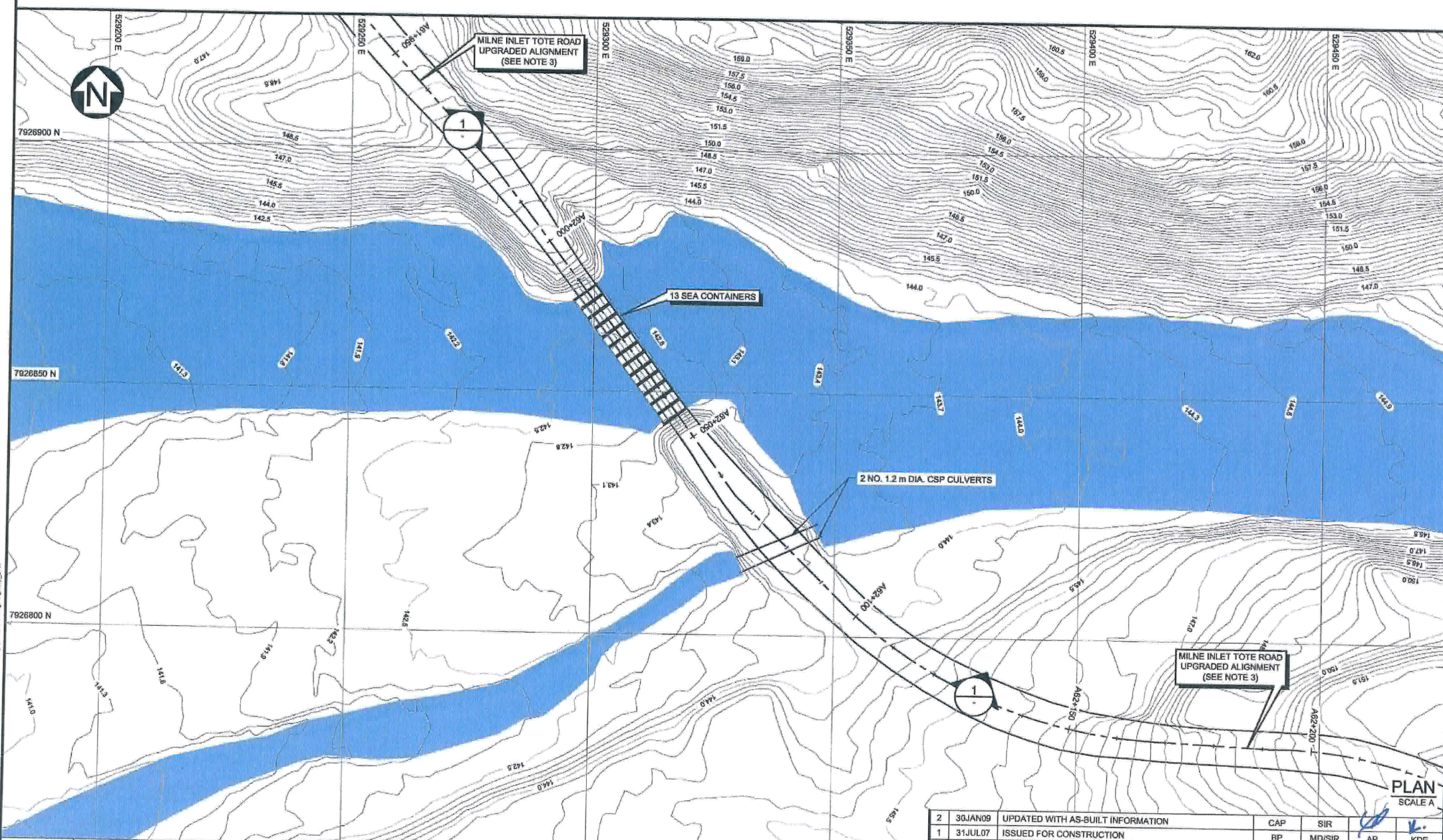
MARY RIVER PROJECT - BULK SAMPLING PROGRAM

EXTRA-LARGE CROSSING CV128  
PLAN AND SECTIONS

P/A NO. **NB102-181/10** DRG. NO. **441** REV **2**

DRG. NO.	DESCRIPTION	REV	DATE	DESIGN	DRAWN	CHKD	APPD
REVISIONS							
2	30JAN09	UPDATED WITH AS-BUILT INFORMATION					
1	31JUL07	ISSUED FOR CONSTRUCTION					
0	13JUL07	ISSUED IN FINAL					
REVISIONS							
REV	DATE	DESCRIPTION	DESIGN	DRAWN	CHKD	APPD	

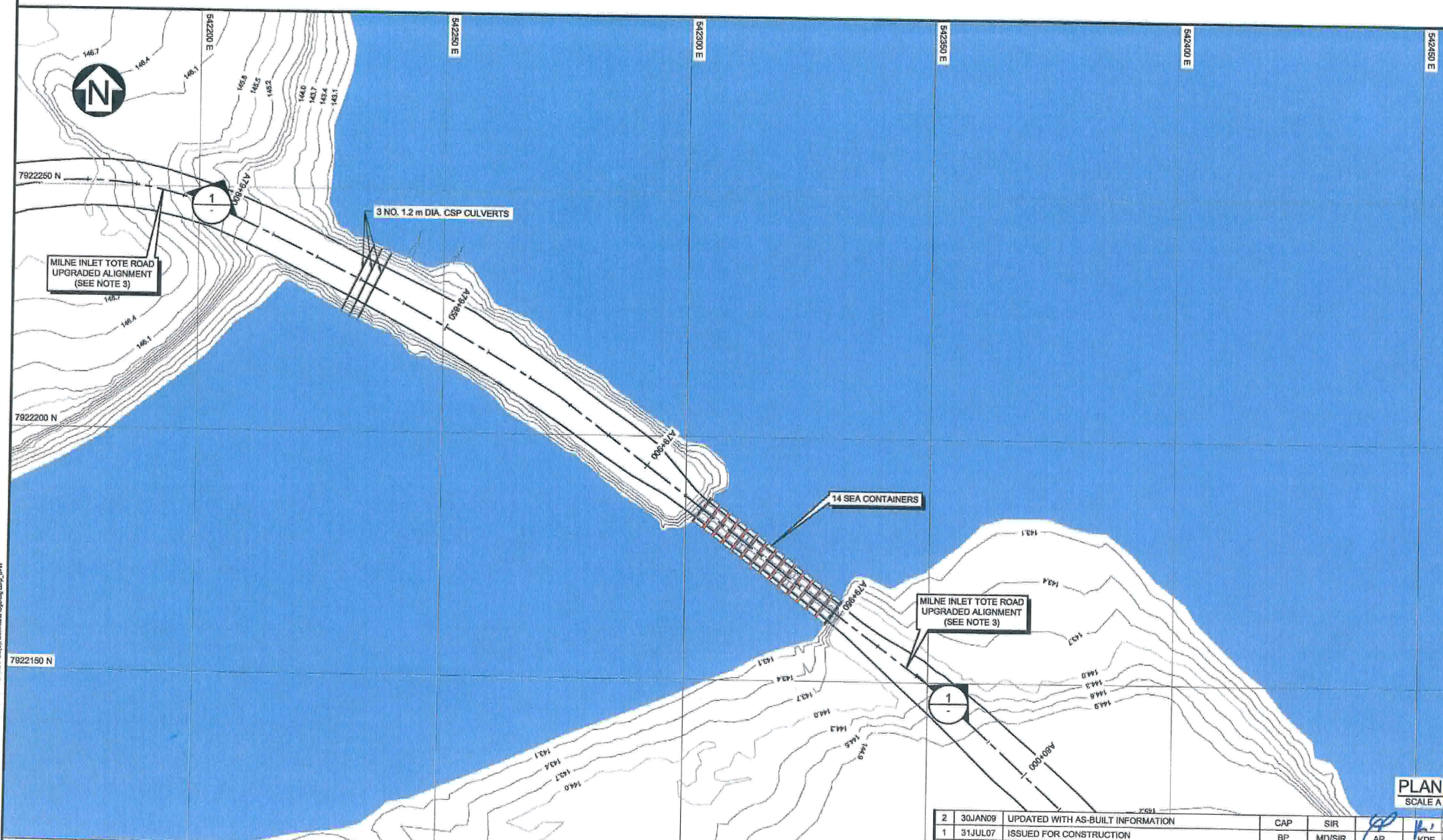
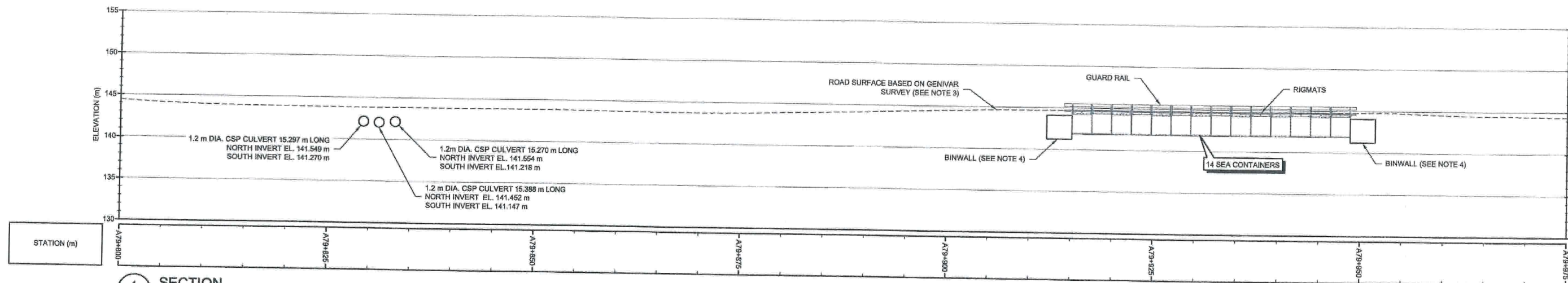




		
		
MARY RIVER PROJECT - BULK SAMPLING PROGRAM		
EXTRA-LARGE CROSSING BG50 PLAN AND SECTIONS		
PIA NO.  <b>NB102-181/10</b>	DRG. NO.  <b>442</b>	REV  <b>2</b>

2	30JAN09	UPDATED WITH AS-BUILT INFORMATION	CAP	SIR		
1	31JUL07	ISSUED FOR CONSTRUCTION	BP	MD/SIR	AP	KDE
0	13JUL07	ISSUED IN FINAL	BP	MD/SIR	AP	KDE
REV	DATE	DESCRIPTION	DESIGN	DRAWN	CHKD	APPD
REVISIONS						





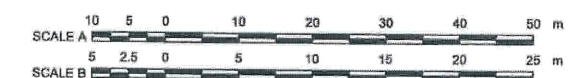
## AS-CONSTRUCTED

### LEGEND:

- WATER
- MAJOR CONTOUR
- MINOR CONTOUR
- ROAD SURFACE BASED ON GENIVAR SURVEY (SEE NOTE 3)
- ROAD ALIGNMENT (SEE NOTE 3)

### NOTE(S):

1. COORDINATE GRID IS UTM (NAD83) ZONE 17 AND IS IN METRES.
2. CONTOURS BASED ON LIDAR SURVEY COMPLETED NOVEMBER 2008. CONTOUR INTERVAL IS 0.3 METRES.
3. AS-CONSTRUCTED ROAD ALIGNMENT PROVIDED BY GENIVAR DATED JULY 2008.
4. BINWALL LOCATIONS AND ELEVATIONS ARE APPROXIMATE AND WERE NOT SURVEYED.



DISCLAIMER

THIS DRAWING WAS PREPARED BY KNIGHT PIESOLD LTD. FOR THE ACCOUNT OF THE CLIENT LISTED ON THIS DRAWING. THE MATERIAL ON IT REFLECTS KNIGHT PIESOLD'S BEST JUDGEMENT IN THE LIGHT OF THE INFORMATION AVAILABLE TO IT AT THE TIME OF PREPARATION. ANY USE WHICH A THIRD PARTY MAKES OF THIS DRAWING OR ANY RELIANCE ON OR DECISIONS TO BE MADE BASED ON IT, ARE THE RESPONSIBILITY OF SUCH THIRD PARTIES. KNIGHT PIESOLD ACCEPTS NO RESPONSIBILITY FOR DAMAGES, IF ANY, SUFFERED BY THE THIRD PARTY AS A RESULT OF DECISIONS MADE OR ACTIONS BASED ON THIS DRAWING. COPIES RESULTING FROM ELECTRONIC TRANSMISSIONS OR REPRODUCTION OF THIS DRAWING ARE UNCONTROLLED AND MAY NOT BE THE MOST RECENT VERSION OF THE DRAWING.

**Knight Piesold**  
CONSULTING

**Baffinland**  
Iron Mines Corporation

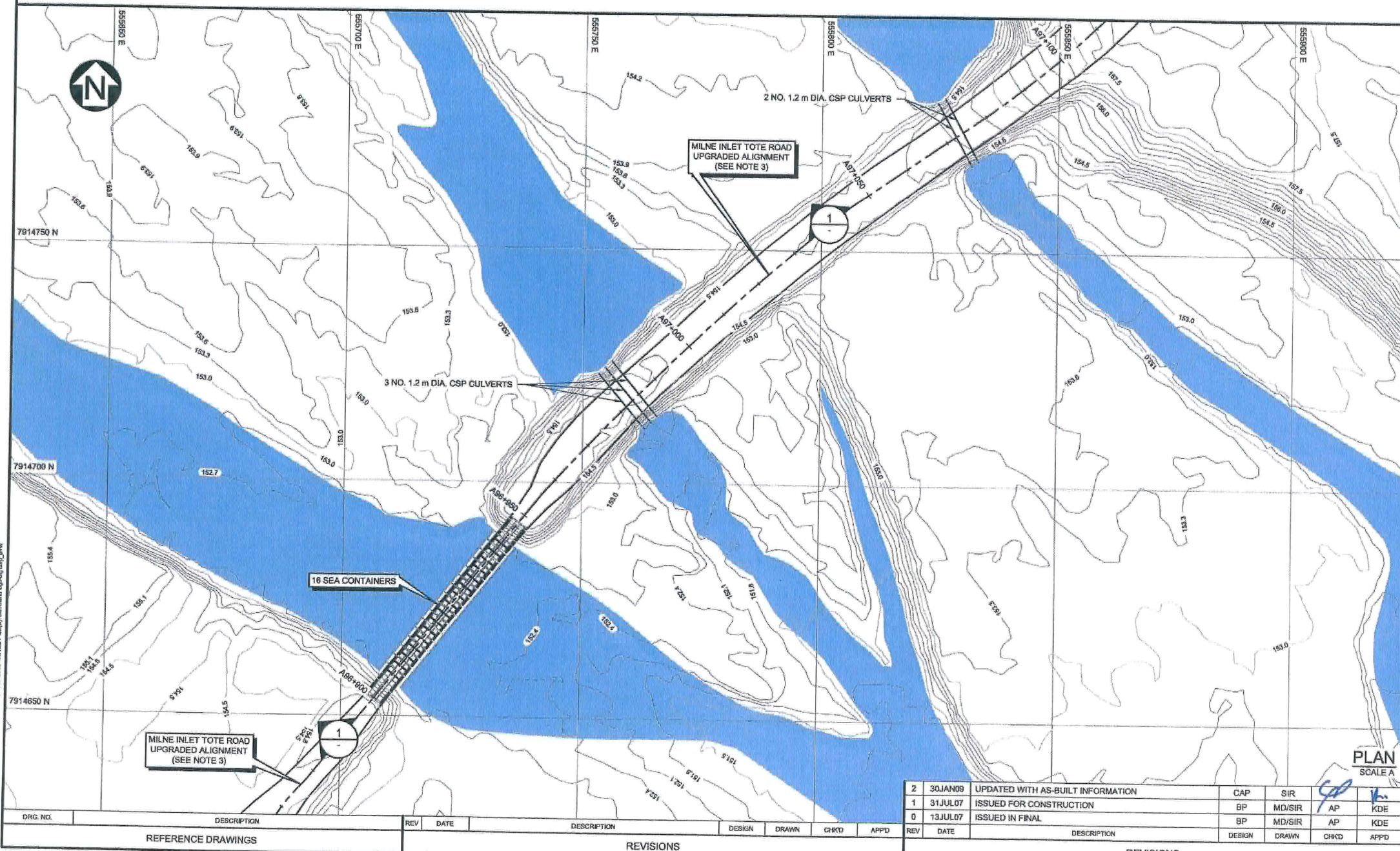
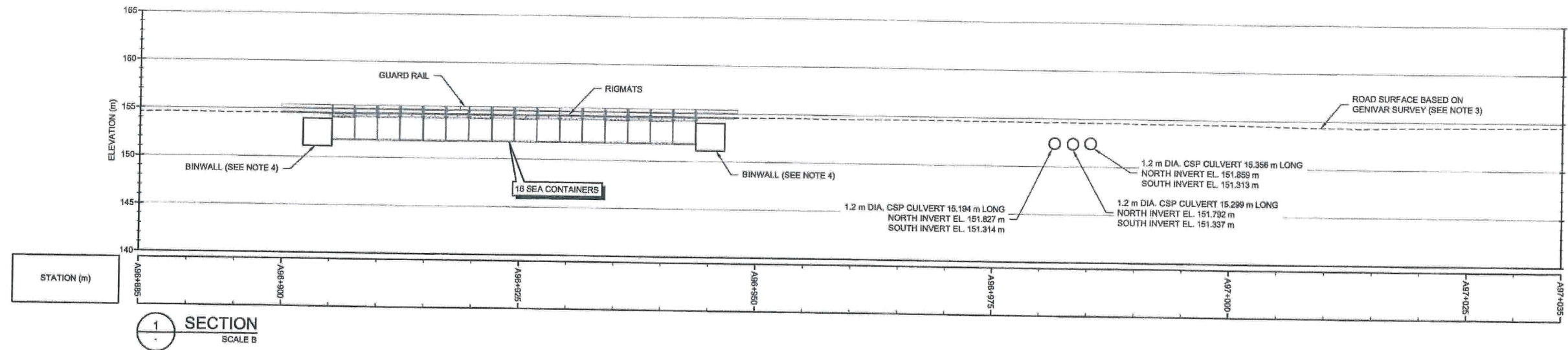
MARY RIVER PROJECT - BULK SAMPLING PROGRAM

**EXTRA-LARGE CROSSING CV217**  
**PLAN AND SECTIONS**

P/A NO. **NB102-181/10** DRG. NO. **443** REV **2**

REV	DATE	DESCRIPTION	DESIGN	DRAWN	CHKD	APPD
2	30JAN09	UPDATED WITH AS-BUILT INFORMATION	CAP	SIR		
1	31JUL07	ISSUED FOR CONSTRUCTION	BP	MD/SIR	AP	KDE
0	13JUL07	ISSUED IN FINAL	BP	MD/SIR	AP	KDE





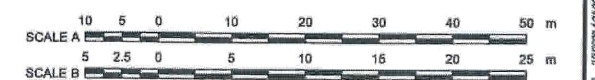
## AS-CONSTRUCTED

### LEGEND:

- WATER
- MAJOR CONTOUR
- MINOR CONTOUR
- ROAD SURFACE BASED ON GENVAR SURVEY (SEE NOTE 3)
- ROAD ALIGNMENT (SEE NOTE 3)

### NOTE(S):

1. COORDINATE GRID IS UTM (NAD83) ZONE 17 AND IS IN METRES.
2. CONTOURS BASED ON LIDAR SURVEY COMPLETED NOVEMBER 2008. CONTOUR INTERVAL IS 0.3 METRES.
3. AS-CONSTRUCTED ROAD ALIGNMENT PROVIDED BY GENVAR DATED JULY 2008.
4. BINWALL LOCATIONS AND ELEVATIONS ARE APPROXIMATE AND WERE NOT SURVEYED.



DISCLAIMER  
THIS DRAWING WAS PREPARED BY KNIGHT PIESOLD LTD. FOR THE ACCOUNT OF THE CLIENT LISTED ON THIS DRAWING. THE MATERIAL ON IT REFLECTS KNIGHT PIESOLD'S BEST JUDGMENT AT THE TIME OF PREPARATION. ANY USE WHICH A THIRD PARTY MAKES OF THIS DRAWING, OR ANY RELIANCE ON OR DECISIONS TO BE MADE BASED ON IT, ARE THE RESPONSIBILITY OF SUCH THIRD PARTIES. KNIGHT PIESOLD ACCEPTS NO RESPONSIBILITY FOR DAMAGES, IF ANY, SUFFERED BY THE THIRD PARTY AS A RESULT OF DECISIONS MADE OR ACTIONS BASED ON THIS DRAWING. REPRODUCTION OF THIS DRAWING IN ANY FORM OR BY ANY MEANS, WITHOUT THE WRITTEN PERMISSION OF KNIGHT PIESOLD, IS PROHIBITED.

**Knight Piésold**  
CONSULTING

**Baffinland**  
IRON MINES CORPORATION

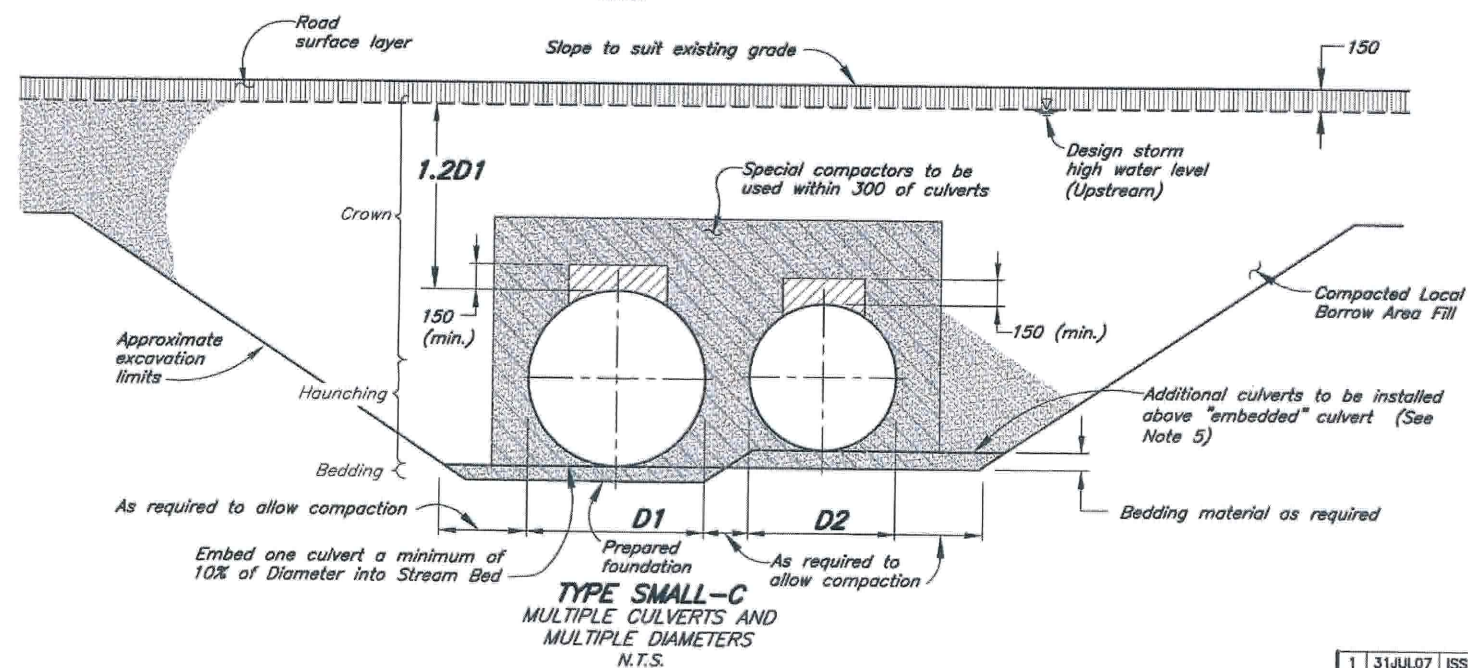
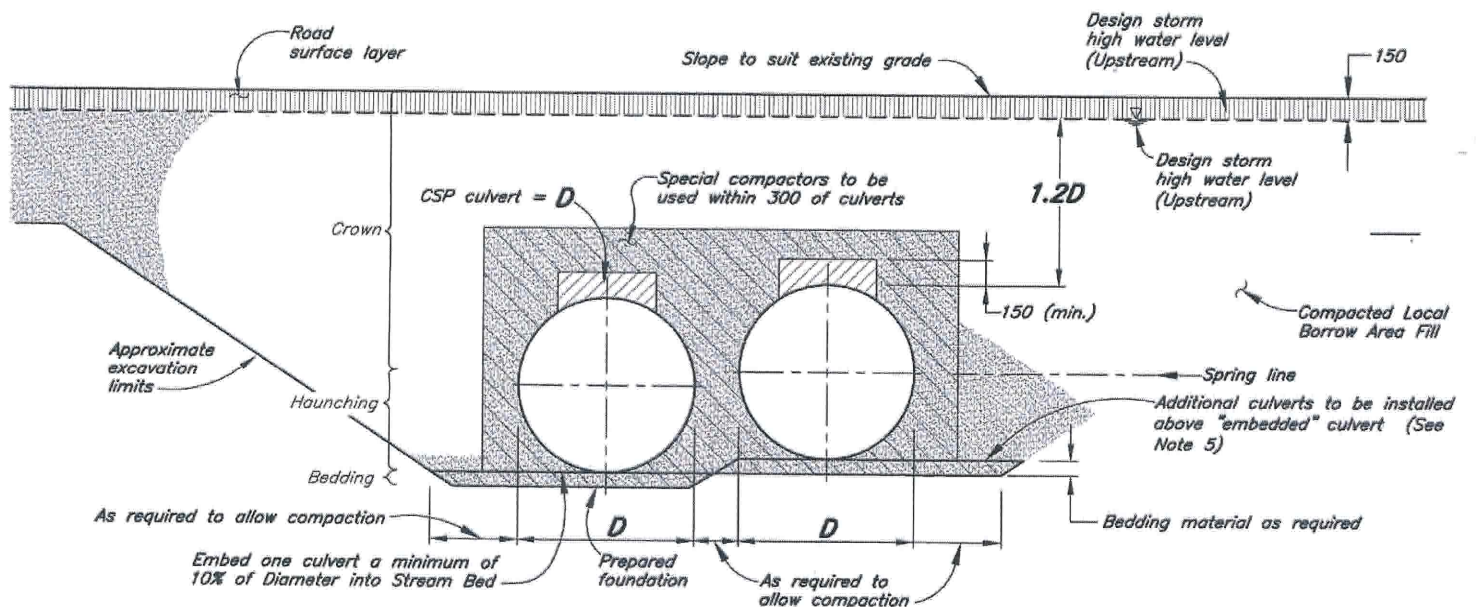
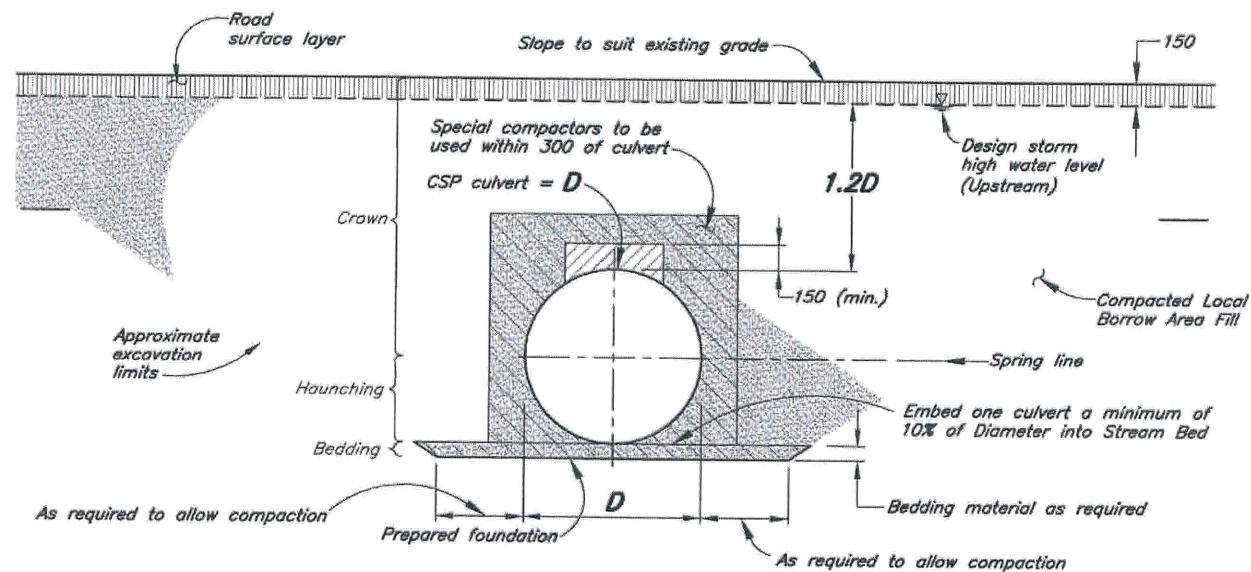
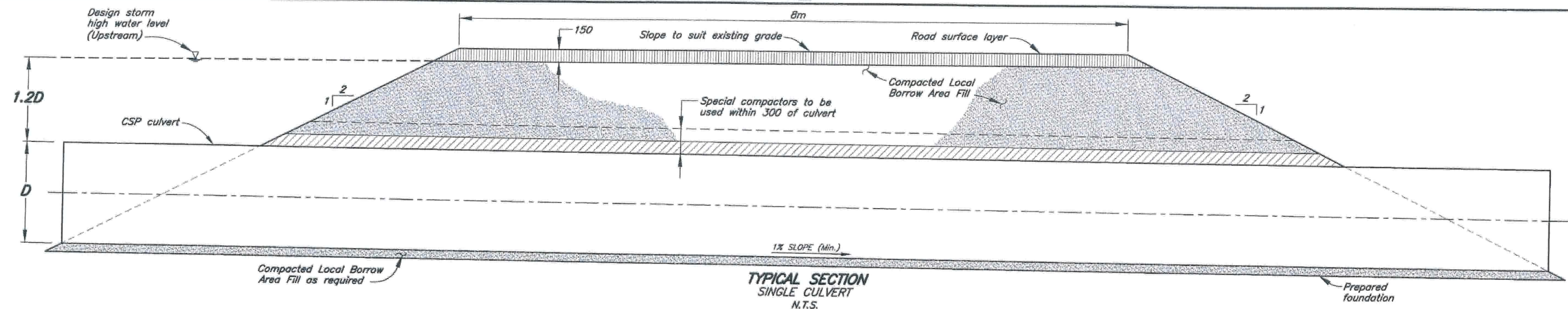
MARY RIVER PROJECT - BULK SAMPLING PROGRAM

EXTRA-LARGE CROSSING CV223  
PLAN AND SECTIONS

P/A NO. **NB102-181/10** DRG. NO. **444** REV **2**

REV	DATE	DESCRIPTION	DESIGN	DRAWN	CHKD	APPD
2	30JAN09	UPDATED WITH AS-BUILT INFORMATION	CAP	SIR		
1	31JUL07	ISSUED FOR CONSTRUCTION	BP	MD/SIR	AP	KDE
0	13JUL07	ISSUED IN FINAL	BP	MD/SIR	AP	KDE





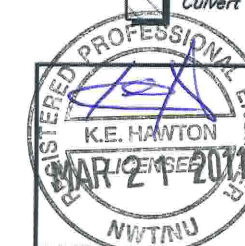
- NOTES:

1. *All dimensions are in millimetres unless otherwise noted.*
2. *Traffic crossings preferably located on a straight section of a watercourse, well downstream of any sharp bends.*
3. *Installation of culverts to be in accordance with the Technical Specifications.*
4. *Design storm for category small crossing is the 1 in 10 year return.*
5. *Additional culverts to be installed above "embedded" culvert to provide maximum flow depth during low flow periods.*

LEGEND:

 **Compacted Local Borrow Area Fill**
 **Loose Local Borrow Area Fill**
 **Road surfacing material**

 **Culvert Backfill**

**Knight Piésold**  
CONSULTING

†Baffinland

MARY RIVER PROJECT - BULK SAMPLING PROGRAM

## SMALL CROSSINGS

### TYPICAL SECTIONS AND DETAILS

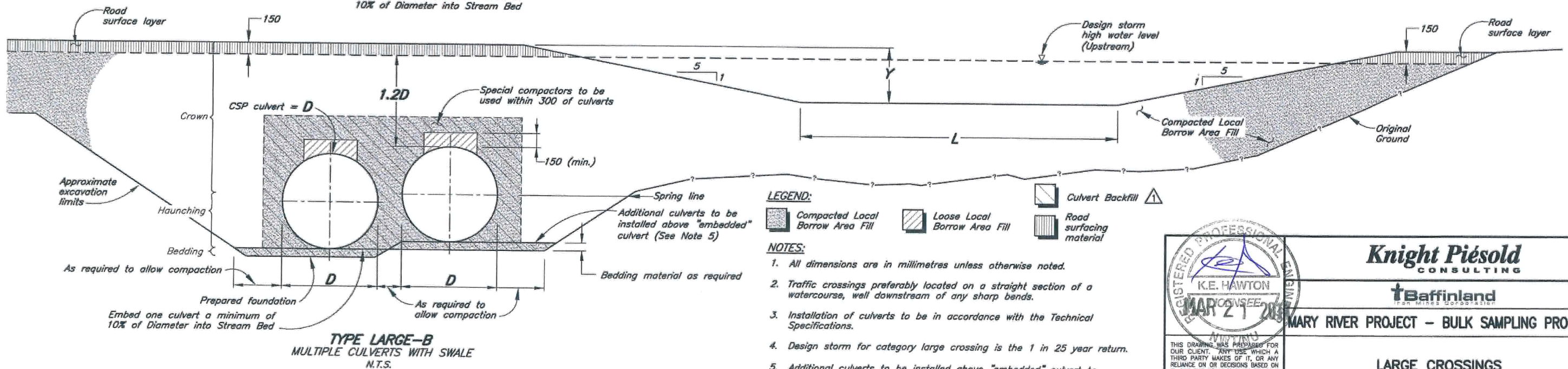
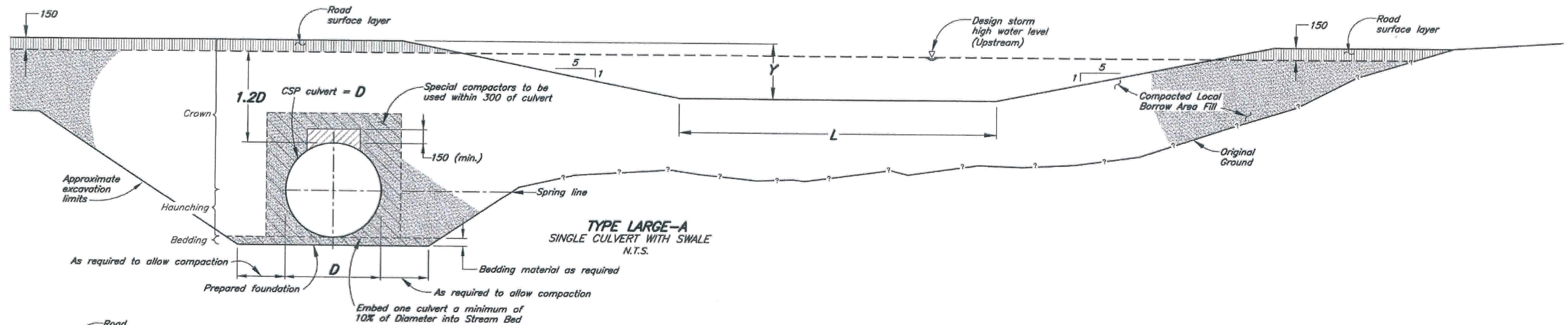
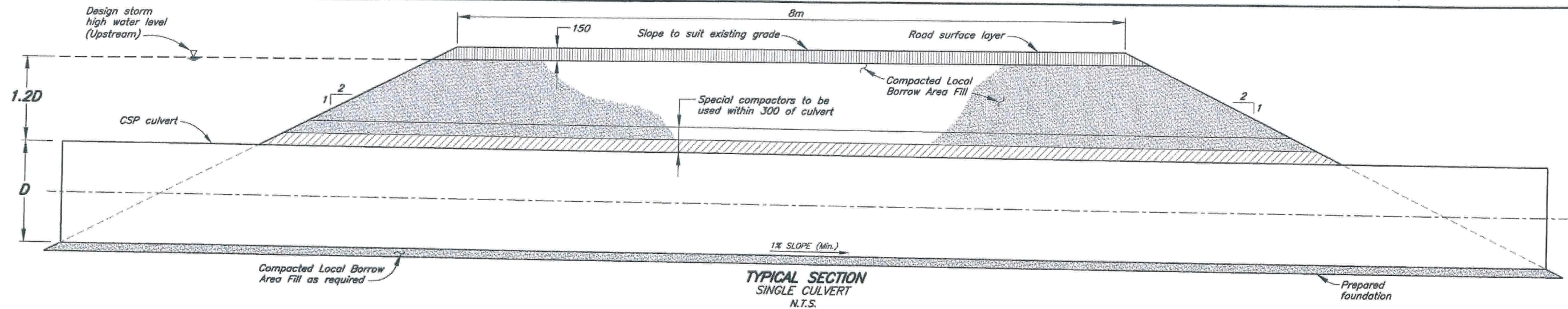
1	31JUL07	ISSUED FOR CONSTRUCTION	BP	MD	AP	K
0	13JUL07	ISSUED IN FINAL	BP	MD	AP	K
REV.	DATE	DESCRIPTION	DESIGN	DRAWN	CHK'D	APP'D
REVISIONS						

PROJECT/ASSIGNMENT NO.	DRAWING NO.	REVISION
NB102-00181/10	411	1









#### LEGEND:

- Compacted Local Borrow Area Fill
- Loose Local Borrow Area Fill
- Road Surfacing material
- Culvert Backfill

#### NOTES:

1. All dimensions are in millimetres unless otherwise noted.
2. Traffic crossings preferably located on a straight section of a watercourse, well downstream of any sharp bends.
3. Installation of culverts to be in accordance with the Technical Specifications.
4. Design storm for category large crossing is the 1 in 25 year return.
5. Additional culverts to be installed above "embedded" culvert to provide maximum flow depth during low flow periods.

REV.	DATE	DESCRIPTION	DESIGN	DRAWN	CHK'D	APP'D
1	31JUL07	ISSUED FOR CONSTRUCTION	BP	MD	AP	KE
0	13JUL07	ISSUED IN FINAL	BP	MD	AP	KE



**Knight Piésold**  
CONSULTING

**Baffinland**  
IRON MINES CORPORATION

MARY RIVER PROJECT - BULK SAMPLING PROGRAM

**LARGE CROSSINGS**  
**TYPICAL SECTIONS AND DETAILS**

PROJECT/ASSIGNMENT NO. **NB102-00181/10** DRAWING NO. **431** REVISION **1**