

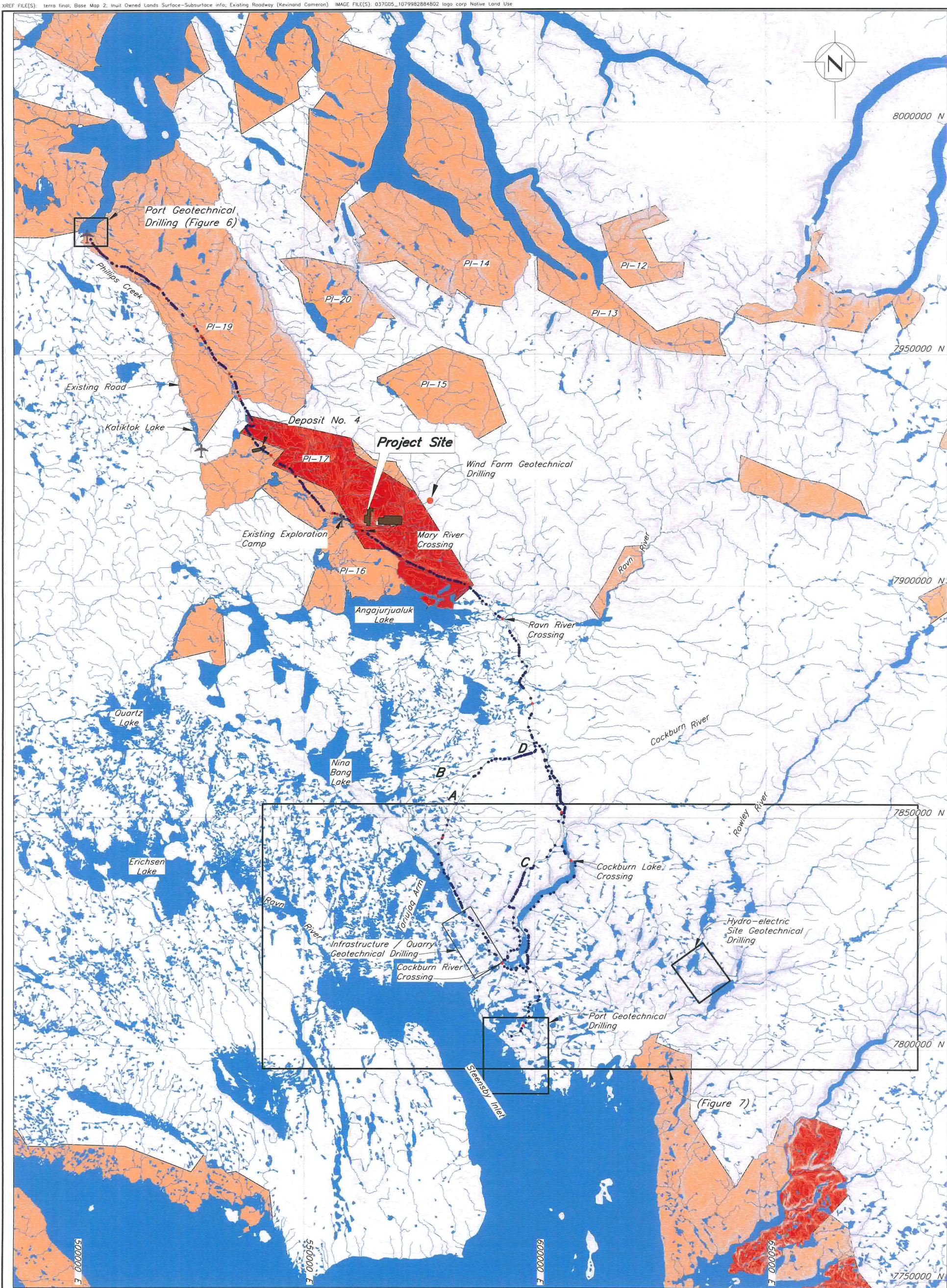


LEGEND:

- Water
- Existing Community



 MARY RIVER PROJECT			
PROJECT LOCATION MAP			
Knight Piésold <small>CONSULTING</small>	P/A NO. NB102-00181/4	REF. 13	REV. A
	FIGURE 1		



LEGEND:

- River
- Transportation Route Alternatives
- A, B.** South Route Alternatives
- Existing Road
- Contour
- ✈ Airstrip
- Orange box: Inuit Owned Land—Surface Only Excluding Minerals
- Red box: Inuit Owned Land—Surface and Subsurface including Minerals
- Brown box: Mineral Leases
- Red dot: Major Crossing
- Blue dot: Minor Crossing

NOTES:

1. Base Map © Her Majesty the Queen in Rights of Canada, Department of Natural Resources, (2004). All rights reserved. (Government of Canada, 2006).
2. Coordinate grid is shown in UTM (NAD83) Zone 17 and is in metres.
3. Transportation Route Alternatives were provided by Canarail.

Scale 8 4 0 8 16 24 32 40 Kilometres

MARY RIVER PROJECT			
LOCATION OF PROPOSED GEOTECHNICAL INVESTIGATIONS			
Knight Piésold CONSULTING		P/A NO. NB102-00181/4	REF. 13
		REV. A	
FIGURE 2			



LEGEND:

- Transportation Route Alternative (Canarail, 2006)
- River/Stream
- Mineral Lease Boundary
- Proposed Water Sources for Drilling

NOTES:

- Airphotos and topography provided by Eagle Mapping (2005).
- Contour interval is 5 metres.
- Coordinate grid is shown in UTM (NAD83) Zone 17 and is in metres.
- Mining lease boundaries from Indian and Northern Affairs (2006).



MARY RIVER PROJECT

WATER SOURCES FOR DRILLING AT
DEPOSIT NO. 4

Knight Piésold
CONSULTING

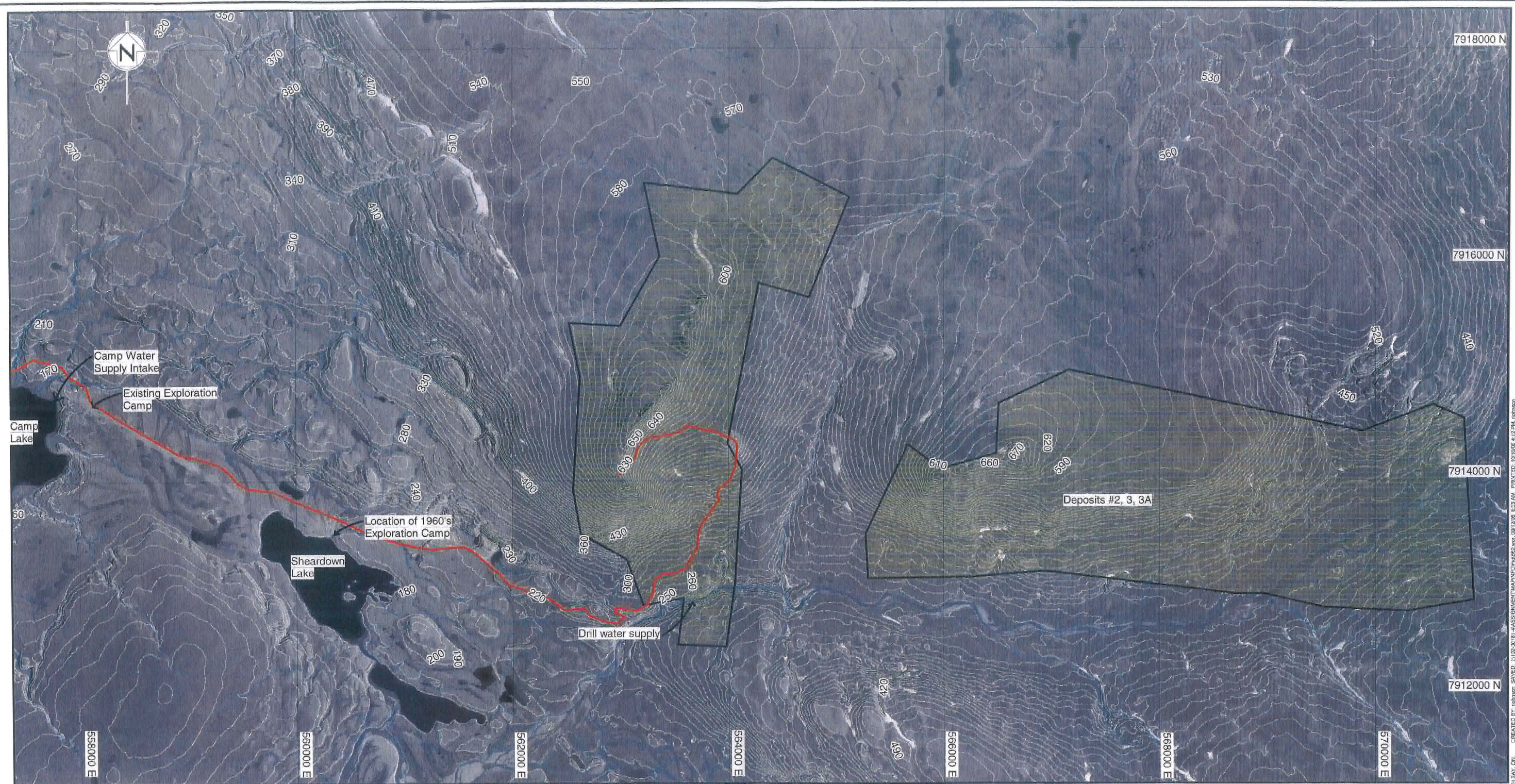
P/A NO.
NB102-00181/4

REF
13

REV.
A

FIGURE 3

Scale 0 500 1,000 Metres



LEGEND:

- Existing Tote Road
- River/Stream
- Mining Lease Boundary

NOTES:

1. Airphotos and topography provided by Eagle Mapping (2005).
2. Contour interval is 10 metres.
3. Coordinate grid is shown in UTM (NAD83) Zone 17 and is in metres.
4. Mining lease boundaries from Indian and Northern Affairs (2006).





MARY RIVER PROJECT

**MARY RIVER
SITE LAYOUT**

	P/A NO. NB102-00181/4	REF 13	REV A
	FIGURE 4		

NORTH: 84° 00' 00" N
 CREATED BY: jphillips
 SAVED: 11/25/2016 4:45:58 PM
 PRINTED: 11/25/2016 4:12 PM
 jphillips