



Photo 1: May 15, approximately 9 PM - View upstream showing washed out area of road and upstream pond.



Photo 2: May 15, approximately 9:00 PM – View downstream showing high flows resulting from road wash, flows subsided within 2 hrs. Note two temporary culverts that were washed downstream during attempt to mitigate.





Photo 3: May 16 approximately 2 AM – View downstream - close-up silt fence installation



Photo 4: May 16, approximately 11 AM – Aerial view upstream –silt fence installation.



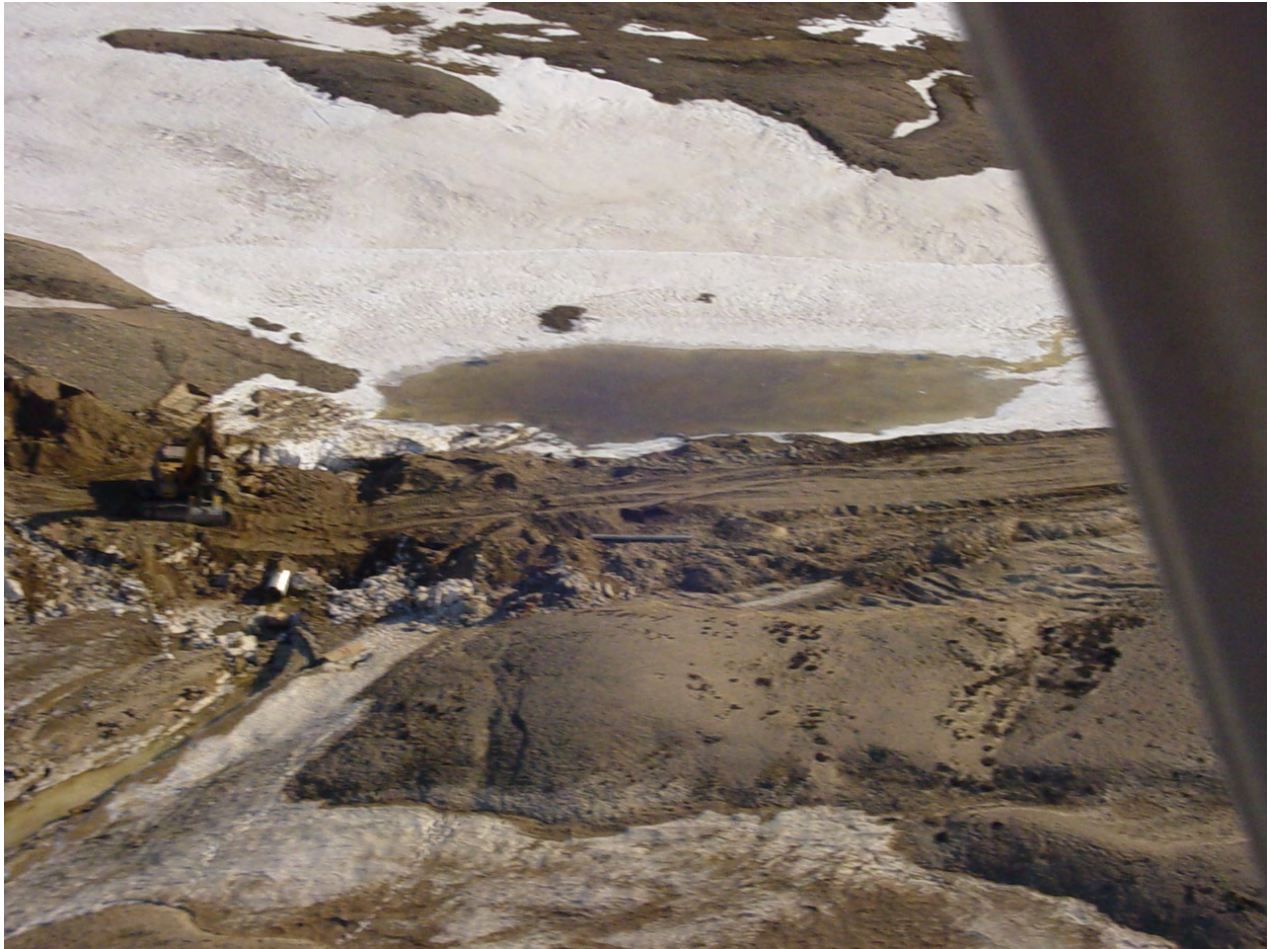


Photo 5: May 16, approximately 11 AM – Aerial view upstream showing auxiliary 1.0 m diam culvert, existing 1.0 m diam culvert (not washed out) is located below new installation (not visible in this photo).



Photo 6: May 16, approximately 11 AM - Aerial view downstream of stream and Camp Lake, note three silt fence installations.





Photo 7: May 16, approximately 11 AM - Aerial view downstream from remnant of upstream pond, showing installation of auxiliary culvert.



Photo 8: May 23 stream walk over - Perched downstream 'auxiliary' culvert. Original installed culvert is below, and not currently visible or open.





Photo 9: May 23 stream walk over - Road material, mainly cobbles and sand, deposited to west of main stream bed, immediately downstream of road. This material averages around 10 cm in depth, thinning in a downstream direction.



Photo 9: May 23 stream walk over - Approximately 80 m downstream. Material in foreground is thought to be natural material. Material in midground is several cm thick sand material from road bed, this material is found in patchy sections to within 80-100 m of Camp Lake shore.





Photo 10: May 23 stream walk over - Further downstream. Patchy cm thick sand deposited on stream bank.



Photo 11: May 23 stream walk over – last 60-80 m of stream banks are free of road bed material.





hoto 12: May 23 stream walkover - Outlet of stream to Camp Lake.