



**B.H. MARTIN CONSULTANTS LTD.**  
CONSULTING ENGINEERS AND ARCHITECT

**RECEIVED**

*By Richard Dwyer at 5:20 pm, Mar 31, 2011*

834 Mountjoy Street South  
P.O. Box 120  
Timmins, Ontario P4N 7C5  
Tel. (705) 264-9413  
Fax. (705) 267-2725

December 9, 2007

Derek Chubb  
Vice President- Sustainable Development  
Baffinland Iron Mines Corporation  
Suite 1016, 120 Adelaide Street West  
Toronto, Ontario M5H 1T1

Dear Derek,

**RE:**

**MARY RIVER PROJECT- FUEL STORAGE FACILITY  
MILNE INLET  
OUR REFERENCE NO. 06-090**

B. H. Martin Consultants Ltd. was retained by Baffinland Iron Mines Corporation (BIMC) to design containments for their fuel storage at their Milne Inlet site in Nunavut and subsequently compile all as-built conditions of the fuel storage facility.

## **BACKGROUND**

A total of 8,289,000 Litres of fuel will be used during the bulk sampling program. Of this approximately 8 ML is diesel fuel and the remainder is Jet "A" fuel for aviation. All fuel for the project arrives at the Milne Inlet port initially. A temporary fuel storage facility has been built to contain all the required fuel at this location. Approximately 1.6ML of this fuel will be transported by approved fuel trucks to the Mary River Camp (approximately 94 km from Milne Inlet). This fuel will be stored in another temporary storage facility at that site.

## **PROPOSED DESIGN OF THE FACILITIES**

Figure C101 (appendix 1) show the site plan at the Milne Inlet port.

Fuel was shipped via tankers from the port of Montreal. All fuel at Milne inlet is stored in the temporary bulk storage facility consisting of fuel bladders within a lined and bermed containment. Figures C201R1 to C203R1 included in Appendix 1 show the construction details of the fuel facility at Milne Inlet. The fuel bladders are identified in NIRB's Northern Remote Site Protocols document (Dillon, 1998) and have been used by both private and the federal government in Nunavut, Yukon and other arctic regions of the world. The fuel bladders are supplied by Raymac Industries and engineered by SEI Industries. Detailed arrangement of

the fuel bladders in the containment as well as piping arrangement is included in Appendix 2.

As shown in the related drawings in Appendix 1, each fuel storage facility consists of an earthen berm lined with a petroleum-resistant geomembrane liner (Hazard HZ-500) that meets ULC/ORD-C58.9-1997 specifications for Underground and Aboveground flammable and combustible liquid storage tanks. The liner is then covered with approximately 300mm of granular material to protect it from damage.

The containments are designed to hold 110% of total aggregate capacity of the fuel facility as per the CCME's "Environmental Code of Practice for Aboveground and Underground Storage Tank Systems containing Petroleum and Allied Petroleum Products" and "National Fire Code of Canada" standards. As well, the containments consist of a sump for collection of precipitation. The containments floors are graded towards the sump. A mobile oil/water separator & pump arrangement (on a trailer) will be brought in to empty the sump periodically to ensure adequate space in the sump. The oil water separator is equipped with filters to separate the oil from the water. The clean water from the oil/water separator is discharged to the outside of the container (a ditch is constructed around the perimeter of the containment to divert water away from the slopes) while the oil which is collected in drums and subsequently shipped offsite for recycling.

The Milne Inlet fuel facility consists of 74 bladders, each containing 113,560 litres. Approximately 71 of the bladders are used for storage of diesel fuel while 3 bladders are used for aviation fuel.

The fuel facility is equipped with dispensers consisting of electric pumps and shut-off valves, and fuelling procedures require full time attendance at all times. Fuel stations also consist of a lined pad backfilled with granular material. The precipitation within this area will be collected in a sump and will be pumped by oil/water separator and pump and discharged in the same fashion as described above. Any fuel spills will be contained within the lined areas which can be excavated, tested and treated if necessary at the end of the bulk sampling program.

## **AS-CONSTRUCTED CONDITIONS**

### *Containment construction*

The containment for the fuel farm was constructed in general conformance with the design. For details on the plans and sections of the containment construction, please refer to as-constructed drawings C201 to C202 (appendix 2). The material used for the containment berms and base was brought from nearby borrow sources. The material was free of any deleterious substances and was approved

by the liner construction staff. A certificate of acceptance is included in Appendix 2 by Raymac/Layfield who is the suppliers and contractor for the lining of the containment.

The liner was installed and welded as per the design criteria as well as liner manufacturer's recommendations. The liner was a nominal 40-mil impermeable material (commercially known as Hazgard 50). Quality Assurance and Quality Control was provided by Layfield (the liner material supplier) and a QA/QC report is included in Appendix 2.

#### *Mechanical (bladders, pipes, valves...)*

All mechanical components of the fuel farm including the bladders (fuel tanks), the piping network within the containment, valves, the sump, oil/water separator, and the piping from the shore to the fuel farm was designed by SEI Industries and constructed by Raymac Inc.

As-constructed drawings of the mechanical components of the fuel farm are included in Appendix 2.

It is our understanding that the fuel farm facility was designed and built in general conformance with CCME's "Environmental Code of Practice for Aboveground and Underground Storage Tank Systems Containing Petroleum and Allied Petroleum Products" as well as "National Fire Code of Canada".

The following requirements have either been followed or shall be followed by Baffinland Iron Mines Corporation in order to ensure compliance with CCME and NFC guidelines prior to the operation of the facility:

#### *Tank Registration*

Each storage tank will be registered with the Fire Marshal in December, 2007. The registration document will include the name of owner, address of owner, type of facility, location of the tanks, storage capacity of the tank, type of product stored, year of installation, ULC standard of tank (bladder), type of storage material, type of piping material, type of corrosion protection (if any), type of pumps, description of leak detection system, type of secondary containment, name of operator, name of land owner, name of installer, manufacturer of storage tanks as per CCME, item 2.4.2.

#### *Visual Leak Detection*

Baffinland conducts a daily visual leak inspection of each fuel farm tank. An inventory reconciliation plan will be devised during the bladder operation as part of the leak detection system.

### *Spill Contingency plan*

The fuel farm operation shall comply with the guidelines set forth by the Spill Contingency Planning and Reporting Regulations. This spill Contingency Plan has been provided by BIMC to the Nunavut Water Board and a copy is available at each site.

### *Bladder and Product Identification*

Each tank/bladder should be identified in conformance with CPPI "using the CPPI Colour-symbol system to mark equipment and vehicles for product identification".

### *Fire Protection*

At least 2 fire extinguishers, each having a rating of not less than 80-B:C, has been provided at the truck loading pad and at the fuel intake to the fuel farm.

Please note that in all cases, the authority having jurisdiction is as follows:

Fire Marshall  
Department of Community Government & Transportation  
Government of Nunavut  
P.O. Box 1000, Station 700  
Iqaluit, Nunavut X0A 0H0  
Tel. 879-975-5310  
Fax. 867-979-4221

We trust this report is satisfactory and meets your requirements. However, should you have any questions, please do not hesitate to contact the undersigned for further discussion.

Yours truly,

***B.H. Martin Consultants Ltd.***

*F. G. Kord*

Marz G. Kord, P. Eng., M.Sc., MBA  
Manager of Engineering



# **APPENDIX 1**

## **DESIGN DRAWINGS**



**TIME CHARTER BULK CARRIERS  
(HANDYMAX 40,000DWT)**

SHUTTLE BARGE  
(2 @ 1500 DWT)  
TUG

SPUD BARGE C/  
SHIP-LOADER

MILNE INLET BEACH

|                        |       |
|------------------------|-------|
| AREAS:                 | 3.9ha |
| STOCKPILE              | 1.9ha |
| FUEL FARM & GENERATOR  | 1.8ha |
| CAMP & COMPONENTS      | 0.1ha |
| AIRSTRIIP FUEL STATION | 2.4ha |
| AIRSTRIIP              |       |

SITE BENCH MARK

This Drawing is an instrument of service and shall remain the property of B.H. Martin Consultants Ltd. It may not be reproduced or copied in any form. It shall not be used for the construction, enlargement or alteration of a building other than the said project without the authorization of the ARCHITECT and/or ENGINEER.

Contractors shall verify and be responsible for all dimensions and conditions on the job and report any discrepancies to the Architect and/ or Engineer before proceeding with the work.

Drawings shall not

THE POSITION OF POLE LINES, CONDUITS, WATERMANS, SEWERS, AND OTHER UNDERGROUND AND OVERGROUND UTILITIES AND STRUCTURES IS NOT NECESSARILY SHOWN ON THIS DRAWING AND WHERE SHOWN, THE ACCURACY OF THE POSITION OF SUCH UTILITIES AND STRUCTURES IS NOT GUARANTEED. BEFORE STARTING WORK, THE CONTRACTOR SHALL INFORM HIMSELF OF ALL SUCH UTILITIES AND STRUCTURES AND SHALL ASSUME ALL LIABILITY FOR DAMAGE TO THEM.

|                            |   |               |
|----------------------------|---|---------------|
| DELETED FUEL PUMPING LINE: | 3 | Oct. 23, 2007 |
| GENERATOR                  |   |               |
| REVISED STOCKPILE AREA     |   |               |
| ADDITIONAL SITE WORK: Unid |   |               |
| Berm Areas: Tamack Area    |   |               |
| REVISED CAMP               | 2 | July 23, 2007 |
| EFFLUENT DISCHARGE DELETED | 2 | July 23, 2007 |
| ISSUED FOR CONSTRUCTION    | 1 | July 03, 2007 |
| ISSUED FOR REVIEW/TENDER   | 0 |               |
| Description                | N | Date          |
| Revisions and Issues       |   |               |



Date Printed



**B.H. MARTIN CONSULTANTS LTD.**  
Consulting Engineers and Architect  
Timmins Ontario  
[www.bhmartin.com](http://www.bhmartin.com)  
ARCHITECT STRUCTURAL/CIVIL

MECHANICAL ELECTRICAL

**Project**  
**MARY RIVER PROJECT**  
**BAFFINLAND IRON**  
**MINES CORP.**

Drawing  
**OVERALL SITE PLAN**  
**MILNE INLET**

|          |           |                  |                    |
|----------|-----------|------------------|--------------------|
| Date     | JUNE 2007 | CADD File Number | mhe16a0603issu.c10 |
| Scale    | 1:2500    | Job Number       |                    |
| Drawn    | CMJ       | <b>06-090</b>    |                    |
| Checked  | MK        | Drawing Number   |                    |
| Approved |           | <b>C101</b>      |                    |
| BHM      |           |                  |                    |

SITE BENCH MARK

This Drawing is an instrument of service and shall remain the property of B.H. Martin Consultants Ltd. It may not be reproduced or copied in any form. It shall not be used for the construction, enlargement or alteration of a building other than the safe project or authorized by the ARCHITECT and/or ENGINEER.

Contractors shall verify and be responsible for all dimensions and conditions on the job and report any discrepancies to the Architect and/or Engineer before proceeding with the work.

Drawings shall not be scaled.

THE POSITION OF POLE LINES, CONDUITS, WATERWAYS, SEWERS, AND OTHER UNDERGROUND AND OVERGROUND UTILITIES AND STRUCTURES IS WHERE SHOWN, THE ACCURACY OF THE POSITION OF SUCH UTILITIES AND STRUCTURES IS NOT GUARANTEED BY THE ARCHITECT. THE CONTRACTOR SHALL INFORM HIMSELF OF ALL SUCH UTILITIES AND STRUCTURES AND SHALL ASSUME ALL LIABILITY FOR DAMAGE TO THEM.

LEGEND:  
9.5' = EXISTING ELEVATION  
x 9.5' = PROPOSED ELEVATION

|                          |               |     |
|--------------------------|---------------|-----|
| ISSUED FOR CONSTRUCTION  | July 03, 2007 | 1   |
| ISSUED FOR REVIEW/TENDER | June 5, 2007  | 0   |
| Description              | Date          | No. |
| Revisions and Issues     |               |     |



NORTH

Date Plotted



B.H. MARTIN CONSULTANTS LTD.  
Consulting Engineers and Architect  
Toronto, Ontario  
www.bhmartin.com

ARCHITECT STRUCTURAL/CIVIL

MECHANICAL ELECTRICAL

\_\_\_\_\_

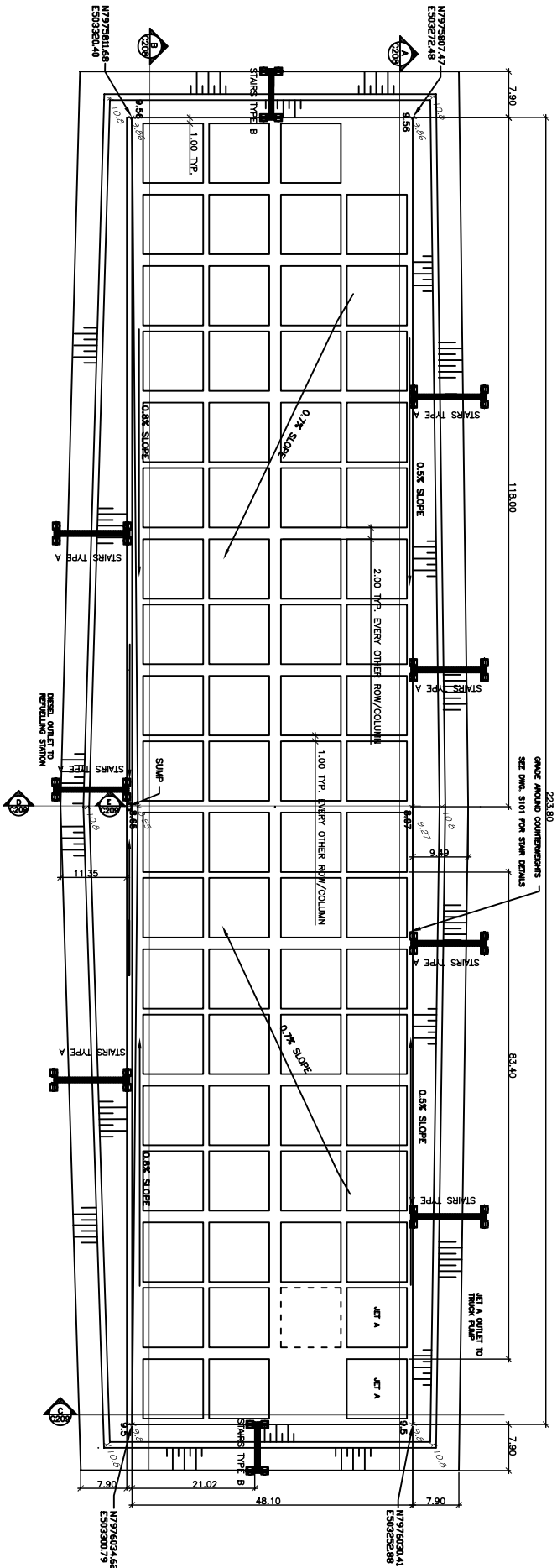
Project  
**BAFFINLAND  
IRON ORE MINES  
FUEL FARM**  
BAFFIN ISLAND

NUUNAVUT

Drawing  
**MILNE INLET SITE  
FUEL FARM  
PLAN VIEW**

|                   |   |
|-------------------|---|
| Date<br>JUNE 2007 | CADD File Number<br>-MILNE INLET FUEL FARM - C201R1 |
| Scale<br>1:5000   | Job Number<br><b>06-090</b>                         |
| Drawn<br>SO       |   |
| Checked<br>MK     | Drawing Number<br><b>C201-R1</b>                    |
| Approved          |   |

NOTE:  
- CONTRACTOR TO SHAPE BASIN TO DRAIN TO SUMP AS PER PLAN.  
- THEN TO PLACE GEOTEXTILE MEMBRANE AND GRAVEL COVER C/W BEAMS.  
- SUMP TO BE CONSTRUCTED TO 0.5% SLOPE TO DRAINAGE POINT.  
- OUTSIDE PERIMETER OF BEAM MAY VARY DUE TO ORIGINAL GROUND ELEVATIONS.

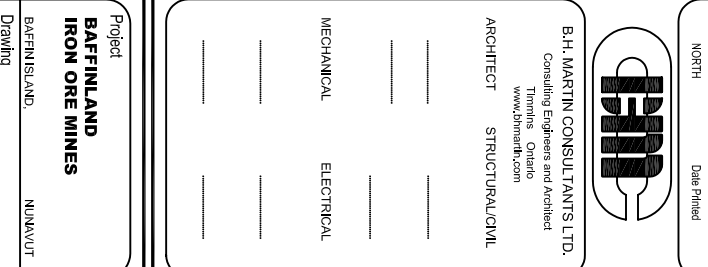


SCALE

This Drawing is an instrument of service and shall remain the property of B.H. HATHI CONSULTANTS LTD. It may not be reproduced or copied in any form. It shall not be used for the construction, enlargement or alteration of a building other than the said project without the authorization of the ARCHITECT and/or ENGINEER.

Contractors shall verify and be responsible for all dimensions and conditions on the job and report any discrepancies to the Architect and/or Engineer before proceeding with the work.

Drawings shall not be scaled.



|         |                                      |
|---------|--------------------------------------|
| Project | <b>BAFFINLAND<br/>IRON ORE MINES</b> |
|         | BAFFIN ISLAND,                       |
| Drawing | NUMAVUT                              |

|                   |  |
|-------------------|--|
| Date<br>JUNE 2007 | CADD File Number<br><i>ALBAC-Wing-Venture-V020</i> |
| Scale<br>1:100    | Job Number<br><b>06-090</b>                        |
| Drawn<br>SO       | Drawing Number<br><b>C202-R1</b>                   |
| Checked<br>MK     |  |
| Approved          |  |



Contractors shall verify and be responsible for all dimensions and conditions on the job and report any discrepancies to the Architect and/ or Engineer before proceeding with the work.

THE POSITION OF POLE LINES, CONDUITS, WATERMANS, SEWERS, AND OTHER UNDERGROUND AND OVERGROUND UTILITIES AND STRUCTURES IS NOT NECESSARILY SHOWN ON THIS DRAWING AND, WHERE SHOWN, THE ACCURACY OF THE POSITION OF SUCH UTILITIES AND STRUCTURES IS NOT GUARANTEED. BEFORE STARTING WORK, THE CONTRACTOR SHALL INFORM HIMSELF OF ALL SUCH UTILITIES AND STRUCTURES AND SHALL ASSUME ALL LIABILITY FOR DAMAGE TO THEM.

|          |           |                  |                      |
|----------|-----------|------------------|----------------------|
| Date     | JUNE 2007 | CADD File Number | \\BLC\cadd\Name_0207 |
| Scale    | 1:100     | Job Number       |                      |
| Drawn    | SO        |                  | <b>06-090</b>        |
| Checked  |           | Drawing Number   |                      |
| MK       |           |                  | <b>C203-R1</b>       |
| Approved |           |                  |                      |

A vertical scale bar labeled "SCALE" is positioned to the right of the diagram. It has a central horizontal line with tick marks. The top tick mark is labeled "5.0m", the middle tick mark is labeled "0", and the bottom tick mark is labeled "5.0m".



## **APPENDIX 2**

**AS-CONSTRUCTED DRAWINGS  
AS-CONSTRUCTED REPORTS (QA/QC)**

This Drawing is an instrument of service and shall remain the property of B.H. MARTIN CONSULTANTS LTD. It shall not be used for the construction, enlargement or alteration of a building other than the said project without the authorization of the ARCHITECT and/or ENGINEER.

Contractors shall verify and be responsible for all dimensions and conditions on the job and report any discrepancies to the Architect and/or Engineer before proceeding with the work.

Drawings shall not be scaled.

|                      |  |      |     |
|----------------------|--|------|-----|
| Description          |  | Date | No. |
| Revisions and Issues |  |      |     |



NORTH

Date Plotted



B.H. MARTIN CONSULTANTS LTD.  
Consulting Engineers and Architect  
Toronto, Ontario  
www.bhmartin.com

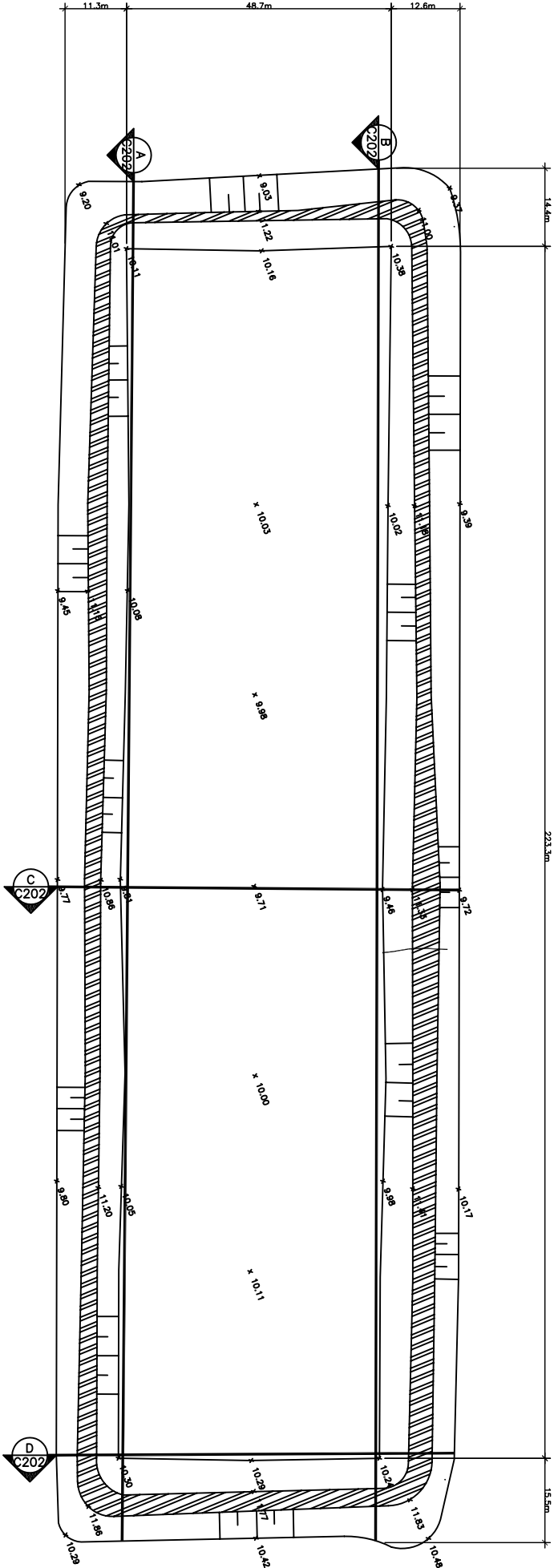
ARCHITECT STRUCTURAL/CML

MECHANICAL ELECTRICAL

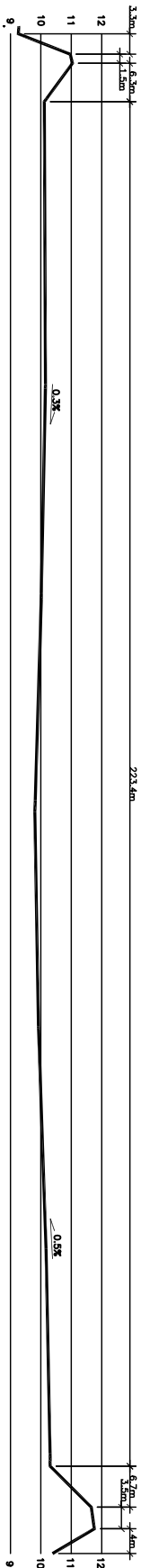
.....

|                     |         |
|---------------------|---------|
| Project             |         |
| Milne Inlet Project |         |
| Bathfeland Iron     |         |
| Mines Corp          |         |
| Bathfeland Island   | Nunavut |
| Drawing             |         |
| Milne Inlet         |         |
| Fuel Farm Layout    |         |
| As Built            |         |

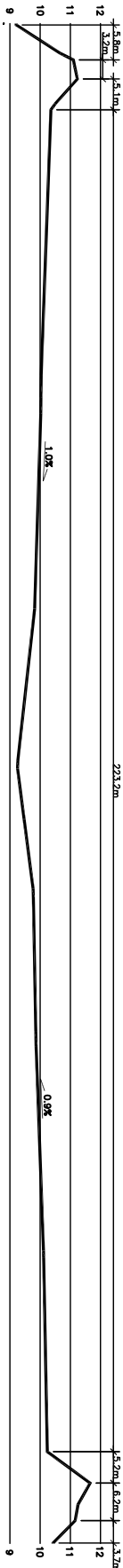
|          |                       |
|----------|-----------------------|
| Date     | CADD File Number      |
| Dec 2007 | Survey/Milne.dwg/C201 |
| Scale    | Job Number            |
| 1:500    | 07-039                |
| Drawn    |                       |
| AB       |                       |
| Checked  | Drawing Number        |
| Approved | C201                  |



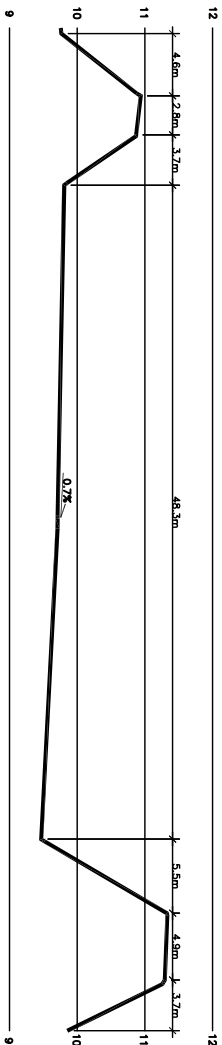
SECTION A  
SCALE 1:500  
C201



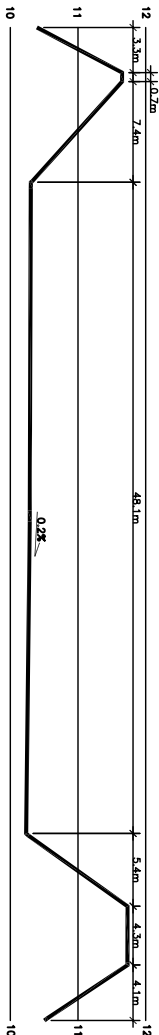
SECTION B  
SCALE 1:500  
C201



SECTION C  
SCALE 1:250  
C201



SECTION D  
SCALE 1:250  
C201

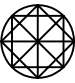


This Drawing is an instrument of service and shall remain the property of B.H. MARTIN CONSULTANTS LTD. It shall not be used for any purpose other than that for which it was prepared, and no part of it shall be used for the construction, enlargement or alteration of a building other than the said project without the authorization of the ARCHITECT and/or ENGINEER.

Contractors shall verify and be responsible for all dimensions and conditions on the job and report any discrepancies to the Architect and/or Engineer before proceeding with the work.

Drawings shall not be scaled.

|                      |      |     |
|----------------------|------|-----|
| Description          |      |     |
| Revisions and Issues | Date | No. |



NORTH

Date Plotted



B.H. MARTIN CONSULTANTS LTD.  
Consulting Engineers and Architect  
Timmins, Ontario  
www.bhmartin.com

ARCHITECT STRUCTURAL/CML

MECHANICAL ELECTRICAL

Project

**MILNE INLET PROJECT**

**BAFFINLAND IRON MINES CORP**

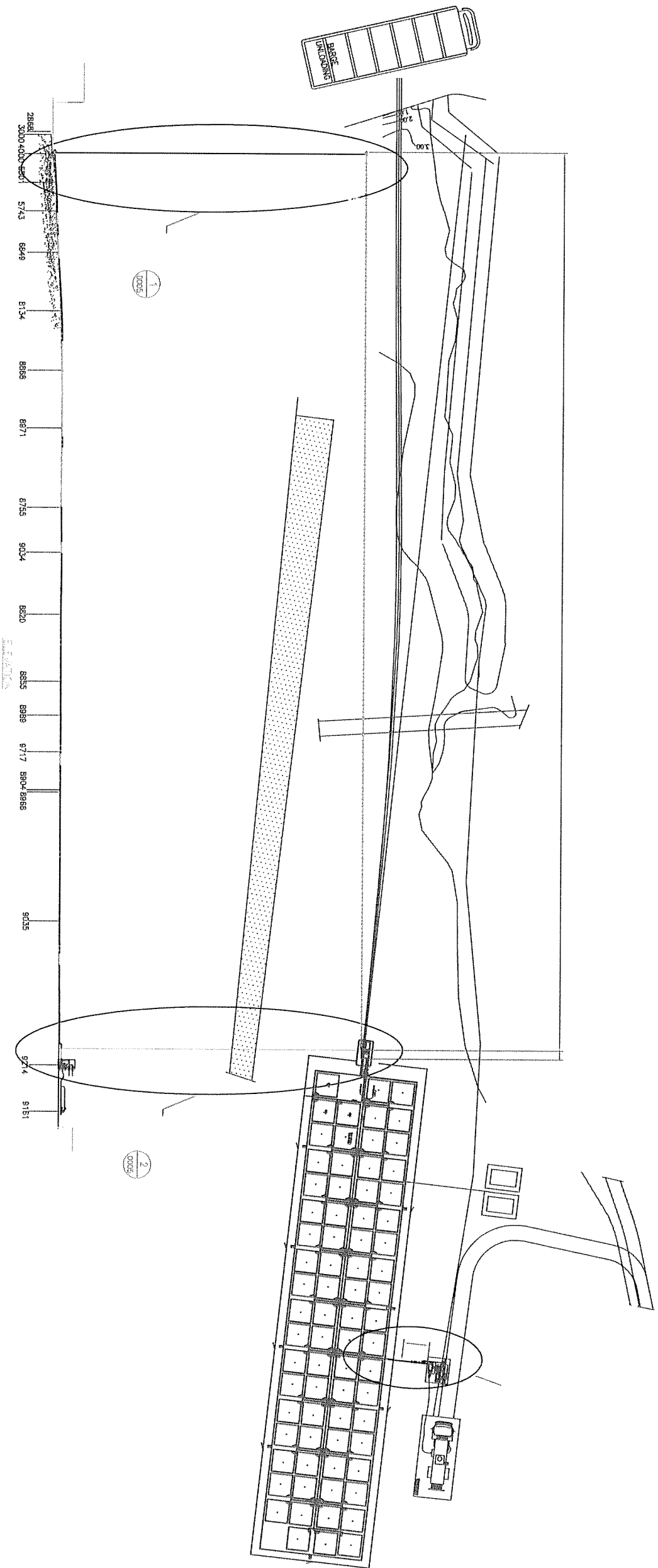
Drawing

**MILNE INLET FUEL FARM AS BUILT SECTIONS**

BAFFIN ISLAND

NUNAVUT

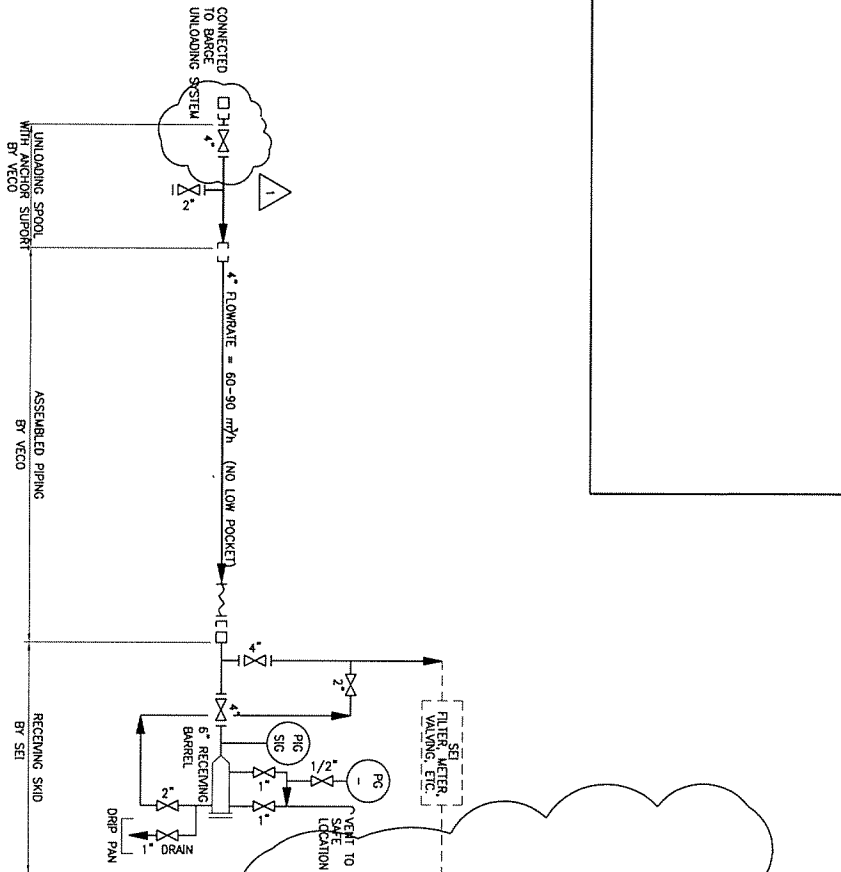
|          |          |                  |                      |
|----------|----------|------------------|----------------------|
| Date     | DEC 2007 | CADD File Number | survey/milnebwg C202 |
| Scale    | AS NOTED | Job Number       | <b>07-039</b>        |
| Drawn    | AB       | Drawing Number   | <b>C202</b>          |
| Checked  |          |                  |                      |
| Approved |          |                  |                      |



|  |  |  |  |  |  |  |  |  |  |                           |  |  |  |  |  |  |  |  |  |
|--|--|--|--|--|--|--|--|--|--|---------------------------|--|--|--|--|--|--|--|--|--|
|  |  |  |  |  |  |  |  |  |  | PROJECT NAME              |  |  |  |  |  |  |  |  |  |
|  |  |  |  |  |  |  |  |  |  | MILNE INLET FUEL STORAGE  |  |  |  |  |  |  |  |  |  |
|  |  |  |  |  |  |  |  |  |  | SEI INDUSTRIES            |  |  |  |  |  |  |  |  |  |
|  |  |  |  |  |  |  |  |  |  | MILNE INLET FUEL STORAGE  |  |  |  |  |  |  |  |  |  |
|  |  |  |  |  |  |  |  |  |  | PIPING PLAN AND ELEVATION |  |  |  |  |  |  |  |  |  |
|  |  |  |  |  |  |  |  |  |  | SCALE                     |  |  |  |  |  |  |  |  |  |
|  |  |  |  |  |  |  |  |  |  | 1 : 1000                  |  |  |  |  |  |  |  |  |  |
|  |  |  |  |  |  |  |  |  |  | DATE                      |  |  |  |  |  |  |  |  |  |
|  |  |  |  |  |  |  |  |  |  | APR/04/07                 |  |  |  |  |  |  |  |  |  |
|  |  |  |  |  |  |  |  |  |  | SHEET                     |  |  |  |  |  |  |  |  |  |
|  |  |  |  |  |  |  |  |  |  | 1                         |  |  |  |  |  |  |  |  |  |
|  |  |  |  |  |  |  |  |  |  | PROJECT NO.               |  |  |  |  |  |  |  |  |  |
|  |  |  |  |  |  |  |  |  |  | 3630-0100                 |  |  |  |  |  |  |  |  |  |
|  |  |  |  |  |  |  |  |  |  | DRAWING NUMBER            |  |  |  |  |  |  |  |  |  |
|  |  |  |  |  |  |  |  |  |  | 36300100-P-M-0004         |  |  |  |  |  |  |  |  |  |
|  |  |  |  |  |  |  |  |  |  | PROJECT NAME              |  |  |  |  |  |  |  |  |  |
|  |  |  |  |  |  |  |  |  |  | MILNE INLET FUEL STORAGE  |  |  |  |  |  |  |  |  |  |
|  |  |  |  |  |  |  |  |  |  | SEI INDUSTRIES            |  |  |  |  |  |  |  |  |  |
|  |  |  |  |  |  |  |  |  |  | MILNE INLET FUEL STORAGE  |  |  |  |  |  |  |  |  |  |
|  |  |  |  |  |  |  |  |  |  | PIPING PLAN AND ELEVATION |  |  |  |  |  |  |  |  |  |
|  |  |  |  |  |  |  |  |  |  | SCALE                     |  |  |  |  |  |  |  |  |  |
|  |  |  |  |  |  |  |  |  |  | 1 : 1000                  |  |  |  |  |  |  |  |  |  |
|  |  |  |  |  |  |  |  |  |  | DATE                      |  |  |  |  |  |  |  |  |  |
|  |  |  |  |  |  |  |  |  |  | APR/04/07                 |  |  |  |  |  |  |  |  |  |
|  |  |  |  |  |  |  |  |  |  | SHEET                     |  |  |  |  |  |  |  |  |  |
|  |  |  |  |  |  |  |  |  |  | 1                         |  |  |  |  |  |  |  |  |  |
|  |  |  |  |  |  |  |  |  |  | PROJECT NO.               |  |  |  |  |  |  |  |  |  |
|  |  |  |  |  |  |  |  |  |  | 3630-0100                 |  |  |  |  |  |  |  |  |  |
|  |  |  |  |  |  |  |  |  |  | DRAWING NUMBER            |  |  |  |  |  |  |  |  |  |
|  |  |  |  |  |  |  |  |  |  | 36300100-P-M-0004         |  |  |  |  |  |  |  |  |  |
|  |  |  |  |  |  |  |  |  |  | PROJECT NAME              |  |  |  |  |  |  |  |  |  |
|  |  |  |  |  |  |  |  |  |  | MILNE INLET FUEL STORAGE  |  |  |  |  |  |  |  |  |  |
|  |  |  |  |  |  |  |  |  |  | SEI INDUSTRIES            |  |  |  |  |  |  |  |  |  |
|  |  |  |  |  |  |  |  |  |  | MILNE INLET FUEL STORAGE  |  |  |  |  |  |  |  |  |  |
|  |  |  |  |  |  |  |  |  |  | PIPING PLAN AND ELEVATION |  |  |  |  |  |  |  |  |  |
|  |  |  |  |  |  |  |  |  |  | SCALE                     |  |  |  |  |  |  |  |  |  |
|  |  |  |  |  |  |  |  |  |  | 1 : 1000                  |  |  |  |  |  |  |  |  |  |
|  |  |  |  |  |  |  |  |  |  | DATE                      |  |  |  |  |  |  |  |  |  |
|  |  |  |  |  |  |  |  |  |  | APR/04/07                 |  |  |  |  |  |  |  |  |  |
|  |  |  |  |  |  |  |  |  |  | SHEET                     |  |  |  |  |  |  |  |  |  |
|  |  |  |  |  |  |  |  |  |  | 1                         |  |  |  |  |  |  |  |  |  |
|  |  |  |  |  |  |  |  |  |  | PROJECT NO.               |  |  |  |  |  |  |  |  |  |
|  |  |  |  |  |  |  |  |  |  | 3630-0100                 |  |  |  |  |  |  |  |  |  |
|  |  |  |  |  |  |  |  |  |  | DRAWING NUMBER            |  |  |  |  |  |  |  |  |  |
|  |  |  |  |  |  |  |  |  |  | 36300100-P-M-0004         |  |  |  |  |  |  |  |  |  |
|  |  |  |  |  |  |  |  |  |  | PROJECT NAME              |  |  |  |  |  |  |  |  |  |
|  |  |  |  |  |  |  |  |  |  | MILNE INLET FUEL STORAGE  |  |  |  |  |  |  |  |  |  |
|  |  |  |  |  |  |  |  |  |  | SEI INDUSTRIES            |  |  |  |  |  |  |  |  |  |
|  |  |  |  |  |  |  |  |  |  | MILNE INLET FUEL STORAGE  |  |  |  |  |  |  |  |  |  |
|  |  |  |  |  |  |  |  |  |  | PIPING PLAN AND ELEVATION |  |  |  |  |  |  |  |  |  |
|  |  |  |  |  |  |  |  |  |  | SCALE                     |  |  |  |  |  |  |  |  |  |
|  |  |  |  |  |  |  |  |  |  | 1 : 1000                  |  |  |  |  |  |  |  |  |  |
|  |  |  |  |  |  |  |  |  |  | DATE                      |  |  |  |  |  |  |  |  |  |
|  |  |  |  |  |  |  |  |  |  | APR/04/07                 |  |  |  |  |  |  |  |  |  |
|  |  |  |  |  |  |  |  |  |  | SHEET                     |  |  |  |  |  |  |  |  |  |
|  |  |  |  |  |  |  |  |  |  | 1                         |  |  |  |  |  |  |  |  |  |
|  |  |  |  |  |  |  |  |  |  | PROJECT NO.               |  |  |  |  |  |  |  |  |  |
|  |  |  |  |  |  |  |  |  |  | 3630-0100                 |  |  |  |  |  |  |  |  |  |
|  |  |  |  |  |  |  |  |  |  | DRAWING NUMBER            |  |  |  |  |  |  |  |  |  |
|  |  |  |  |  |  |  |  |  |  | 36300100-P-M-0004         |  |  |  |  |  |  |  |  |  |
|  |  |  |  |  |  |  |  |  |  | PROJECT NAME              |  |  |  |  |  |  |  |  |  |
|  |  |  |  |  |  |  |  |  |  | MILNE INLET FUEL STORAGE  |  |  |  |  |  |  |  |  |  |
|  |  |  |  |  |  |  |  |  |  | SEI INDUSTRIES            |  |  |  |  |  |  |  |  |  |
|  |  |  |  |  |  |  |  |  |  | MILNE INLET FUEL STORAGE  |  |  |  |  |  |  |  |  |  |
|  |  |  |  |  |  |  |  |  |  | PIPING PLAN AND ELEVATION |  |  |  |  |  |  |  |  |  |
|  |  |  |  |  |  |  |  |  |  | SCALE                     |  |  |  |  |  |  |  |  |  |
|  |  |  |  |  |  |  |  |  |  | 1 : 1000                  |  |  |  |  |  |  |  |  |  |
|  |  |  |  |  |  |  |  |  |  | DATE                      |  |  |  |  |  |  |  |  |  |
|  |  |  |  |  |  |  |  |  |  | APR/04/07                 |  |  |  |  |  |  |  |  |  |
|  |  |  |  |  |  |  |  |  |  | SHEET                     |  |  |  |  |  |  |  |  |  |
|  |  |  |  |  |  |  |  |  |  | 1                         |  |  |  |  |  |  |  |  |  |
|  |  |  |  |  |  |  |  |  |  | PROJECT NO.               |  |  |  |  |  |  |  |  |  |
|  |  |  |  |  |  |  |  |  |  | 3630-0100                 |  |  |  |  |  |  |  |  |  |
|  |  |  |  |  |  |  |  |  |  | DRAWING NUMBER            |  |  |  |  |  |  |  |  |  |
|  |  |  |  |  |  |  |  |  |  | 36300100-P-M-0004         |  |  |  |  |  |  |  |  |  |
|  |  |  |  |  |  |  |  |  |  | PROJECT NAME              |  |  |  |  |  |  |  |  |  |
|  |  |  |  |  |  |  |  |  |  | MILNE INLET FUEL STORAGE  |  |  |  |  |  |  |  |  |  |
|  |  |  |  |  |  |  |  |  |  | SEI INDUSTRIES            |  |  |  |  |  |  |  |  |  |
|  |  |  |  |  |  |  |  |  |  | MILNE INLET FUEL STORAGE  |  |  |  |  |  |  |  |  |  |
|  |  |  |  |  |  |  |  |  |  | PIPING PLAN AND ELEVATION |  |  |  |  |  |  |  |  |  |
|  |  |  |  |  |  |  |  |  |  | SCALE                     |  |  |  |  |  |  |  |  |  |
|  |  |  |  |  |  |  |  |  |  | 1 : 1000                  |  |  |  |  |  |  |  |  |  |
|  |  |  |  |  |  |  |  |  |  | DATE                      |  |  |  |  |  |  |  |  |  |
|  |  |  |  |  |  |  |  |  |  | APR/04/07                 |  |  |  |  |  |  |  |  |  |
|  |  |  |  |  |  |  |  |  |  | SHEET                     |  |  |  |  |  |  |  |  |  |
|  |  |  |  |  |  |  |  |  |  | 1                         |  |  |  |  |  |  |  |  |  |
|  |  |  |  |  |  |  |  |  |  | PROJECT NO.               |  |  |  |  |  |  |  |  |  |
|  |  |  |  |  |  |  |  |  |  | 3630-0100                 |  |  |  |  |  |  |  |  |  |
|  |  |  |  |  |  |  |  |  |  | DRAWING NUMBER            |  |  |  |  |  |  |  |  |  |
|  |  |  |  |  |  |  |  |  |  | 36300100-P-M-0004         |  |  |  |  |  |  |  |  |  |
|  |  |  |  |  |  |  |  |  |  | PROJECT NAME              |  |  |  |  |  |  |  |  |  |
|  |  |  |  |  |  |  |  |  |  | MILNE INLET FUEL STORAGE  |  |  |  |  |  |  |  |  |  |
|  |  |  |  |  |  |  |  |  |  | SEI INDUSTRIES            |  |  |  |  |  |  |  |  |  |
|  |  |  |  |  |  |  |  |  |  | MILNE INLET FUEL STORAGE  |  |  |  |  |  |  |  |  |  |
|  |  |  |  |  |  |  |  |  |  | PIPING PLAN AND ELEVATION |  |  |  |  |  |  |  |  |  |
|  |  |  |  |  |  |  |  |  |  | SCALE                     |  |  |  |  |  |  |  |  |  |
|  |  |  |  |  |  |  |  |  |  | 1 : 1000                  |  |  |  |  |  |  |  |  |  |
|  |  |  |  |  |  |  |  |  |  | DATE                      |  |  |  |  |  |  |  |  |  |
|  |  |  |  |  |  |  |  |  |  | APR/04/07                 |  |  |  |  |  |  |  |  |  |
|  |  |  |  |  |  |  |  |  |  | SHEET                     |  |  |  |  |  |  |  |  |  |
|  |  |  |  |  |  |  |  |  |  | 1                         |  |  |  |  |  |  |  |  |  |
|  |  |  |  |  |  |  |  |  |  | PROJECT NO.               |  |  |  |  |  |  |  |  |  |
|  |  |  |  |  |  |  |  |  |  | 3630-0100                 |  |  |  |  |  |  |  |  |  |
|  |  |  |  |  |  |  |  |  |  | DRAWING NUMBER            |  |  |  |  |  |  |  |  |  |
|  |  |  |  |  |  |  |  |  |  | 36300100-P-M-0004         |  |  |  |  |  |  |  |  |  |
|  |  |  |  |  |  |  |  |  |  | PROJECT NAME              |  |  |  |  |  |  |  |  |  |
|  |  |  |  |  |  |  |  |  |  | MILNE INLET FUEL STORAGE  |  |  |  |  |  |  |  |  |  |
|  |  |  |  |  |  |  |  |  |  | SEI INDUSTRIES            |  |  |  |  |  |  |  |  |  |
|  |  |  |  |  |  |  |  |  |  | MILNE INLET FUEL STORAGE  |  |  |  |  |  |  |  |  |  |
|  |  |  |  |  |  |  |  |  |  | PIPING PLAN AND ELEVATION |  |  |  |  |  |  |  |  |  |
|  |  |  |  |  |  |  |  |  |  | SCALE                     |  |  |  |  |  |  |  |  |  |
|  |  |  |  |  |  |  |  |  |  | 1 : 1000                  |  |  |  |  |  |  |  |  |  |
|  |  |  |  |  |  |  |  |  |  | DATE                      |  |  |  |  |  |  |  |  |  |
|  |  |  |  |  |  |  |  |  |  | APR/04/07                 |  |  |  |  |  |  |  |  |  |
|  |  |  |  |  |  |  |  |  |  | SHEET                     |  |  |  |  |  |  |  |  |  |
|  |  |  |  |  |  |  |  |  |  | 1                         |  |  |  |  |  |  |  |  |  |
|  |  |  |  |  |  |  |  |  |  | PROJECT NO.               |  |  |  |  |  |  |  |  |  |
|  |  |  |  |  |  |  |  |  |  | 3630-0100                 |  |  |  |  |  |  |  |  |  |
|  |  |  |  |  |  |  |  |  |  | DRAWING NUMBER            |  |  |  |  |  |  |  |  |  |
|  |  |  |  |  |  |  |  |  |  | 36300100-P-M-0004         |  |  |  |  |  |  |  |  |  |
|  |  |  |  |  |  |  |  |  |  | PROJECT NAME              |  |  |  |  |  |  |  |  |  |
|  |  |  |  |  |  |  |  |  |  | MILNE INLET FUEL STORAGE  |  |  |  |  |  |  |  |  |  |
|  |  |  |  |  |  |  |  |  |  | SEI INDUSTRIES            |  |  |  |  |  |  |  |  |  |
|  |  |  |  |  |  |  |  |  |  | MILNE INLET FUEL STORAGE  |  |  |  |  |  |  |  |  |  |
|  |  |  |  |  |  |  |  |  |  | PIPING PLAN AND ELEVATION |  |  |  |  |  |  |  |  |  |
|  |  |  |  |  |  |  |  |  |  | SCALE                     |  |  |  |  |  |  |  |  |  |
|  |  |  |  |  |  |  |  |  |  | 1 : 1000                  |  |  |  |  |  |  |  |  |  |
|  |  |  |  |  |  |  |  |  |  | DATE                      |  |  |  |  |  |  |  |  |  |
|  |  |  |  |  |  |  |  |  |  | APR/04/07                 |  |  |  |  |  |  |  |  |  |
|  |  |  |  |  |  |  |  |  |  | SHEET                     |  |  |  |  |  |  |  |  |  |
|  |  |  |  |  |  |  |  |  |  | 1                         |  |  |  |  |  |  |  |  |  |
|  |  |  |  |  |  |  |  |  |  | PROJECT NO.               |  |  |  |  |  |  |  |  |  |
|  |  |  |  |  |  |  |  |  |  | 3630-0100                 |  |  |  |  |  |  |  |  |  |
|  |  |  |  |  |  |  |  |  |  | DRAWING NUMBER            |  |  |  |  |  |  |  |  |  |
|  |  |  |  |  |  |  |  |  |  | 36300100-P-M-0004         |  |  |  |  |  |  |  |  |  |
|  |  |  |  |  |  |  |  |  |  | PROJECT NAME              |  |  |  |  |  |  |  |  |  |
|  |  |  |  |  |  |  |  |  |  | MILNE INLET FUEL STORAGE  |  |  |  |  |  |  |  |  |  |
|  |  |  |  |  |  |  |  |  |  | SEI INDUSTRIES            |  |  |  |  |  |  |  |  |  |
|  |  |  |  |  |  |  |  |  |  | MILNE INLET FUEL STORAGE  |  |  |  |  |  |  |  |  |  |
|  |  |  |  |  |  |  |  |  |  | PIPING PLAN AND ELEVATION |  |  |  |  |  |  |  |  |  |
|  |  |  |  |  |  |  |  |  |  | SCALE                     |  |  |  |  |  |  |  |  |  |
|  |  |  |  |  |  |  |  |  |  | 1 : 1000                  |  |  |  |  |  |  |  |  |  |
|  |  |  |  |  |  |  |  |  |  | DATE                      |  |  |  |  |  |  |  |  |  |
|  |  |  |  |  |  |  |  |  |  | APR/04/07                 |  |  |  |  |  |  |  |  |  |
|  |  |  |  |  |  |  |  |  |  | SHEET                     |  |  |  |  |  |  |  |  |  |
|  |  |  |  |  |  |  |  |  |  | 1                         |  |  |  |  |  |  |  |  |  |
|  |  |  |  |  |  |  |  |  |  | PROJECT NO.               |  |  |  |  |  |  |  |  |  |
|  |  |  |  |  |  |  |  |  |  | 3630-0100                 |  |  |  |  |  |  |  |  |  |
|  |  |  |  |  |  |  |  |  |  | DRAWING NUMBER            |  |  |  |  |  |  |  |  |  |
|  |  |  |  |  |  |  |  |  |  | 36300100-P-M-0004         |  |  |  |  |  |  |  |  |  |
|  |  |  |  |  |  |  |  |  |  | PROJECT NAME              |  |  |  |  |  |  |  |  |  |
|  |  |  |  |  |  |  |  |  |  | MILNE INLET FUEL STORAGE  |  |  |  |  |  |  |  |  |  |
|  |  |  |  |  |  |  |  |  |  | SEI INDUSTRIES            |  |  |  |  |  |  |  |  |  |
|  |  |  |  |  |  |  |  |  |  | MILNE INLET FUEL STORAGE  |  |  |  |  |  |  |  |  |  |
|  |  |  |  |  |  |  |  |  |  | PIPING PLAN AND ELEVATION |  |  |  |  |  |  |  |  |  |
|  |  |  |  |  |  |  |  |  |  | SCALE                     |  |  |  |  |  |  |  |  |  |
|  |  |  |  |  |  |  |  |  |  | 1 : 1000                  |  |  |  |  |  |  |  |  |  |
|  |  |  |  |  |  |  |  |  |  | DATE                      |  |  |  |  |  |  |  |  |  |
|  |  |  |  |  |  |  |  |  |  | APR/04/07                 |  |  |  |  |  |  |  |  |  |
|  |  |  |  |  |  |  |  |  |  | SHEET                     |  |  |  |  |  |  |  |  |  |
|  |  |  |  |  |  |  |  |  |  | 1                         |  |  |  |  |  |  |  |  |  |
|  |  |  |  |  |  |  |  |  |  | PROJECT NO.               |  |  |  |  |  |  |  |  |  |
|  |  |  |  |  |  |  |  |  |  | 3630-0100                 |  |  |  |  |  |  |  |  |  |
|  |  |  |  |  |  |  |  |  |  | DRAWING NUMBER            |  |  |  |  |  |  |  |  |  |
|  |  |  |  |  |  |  |  |  |  | 36300100-P-M-0004         |  |  |  |  |  |  |  |  |  |
|  |  |  |  |  |  |  |  |  |  | PROJECT NAME              |  |  |  |  |  |  |  |  |  |
|  |  |  |  |  |  |  |  |  |  | MILNE INLET FUEL STORAGE  |  |  |  |  |  |  |  |  |  |
|  |  |  |  |  |  |  |  |  |  | SEI INDUSTRIES            |  |  |  |  |  |  |  |  |  |
|  |  |  |  |  |  |  |  |  |  | MILNE INLET FUEL STORAGE  |  |  |  |  |  |  |  |  |  |
|  |  |  |  |  |  |  |  |  |  | PIPING PLAN AND ELEVATION |  |  |  |  |  |  |  |  |  |
|  |  |  |  |  |  |  |  |  |  | SCALE                     |  |  |  |  |  |  |  |  |  |
|  |  |  |  |  |  |  |  |  |  | 1 : 1000                  |  |  |  |  |  |  |  |  |  |
|  |  |  |  |  |  |  |  |  |  | DATE                      |  |  |  |  |  |  |  |  |  |
|  |  |  |  |  |  |  |  |  |  | APR/04/07                 |  |  |  |  |  |  |  |  |  |
|  |  |  |  |  |  |  |  |  |  | SHEET                     |  |  |  |  |  |  |  |  |  |
|  |  |  |  |  |  |  |  |  |  | 1                         |  |  |  |  |  |  |  |  |  |
|  |  |  |  |  |  |  |  |  |  | PROJECT NO.               |  |  |  |  |  |  |  |  |  |
|  |  |  |  |  |  |  |  |  |  | 3630-0100                 |  |  |  |  |  |  |  |  |  |
|  |  |  |  |  |  |  |  |  |  | DRAWING NUMBER            |  |  |  |  |  |  |  |  |  |
|  |  |  |  |  |  |  |  |  |  | 36300100-P-M-0004         |  |  |  |  |  |  |  |  |  |
|  |  |  |  |  |  |  |  |  |  | PROJECT NAME              |  |  |  |  |  |  |  |  |  |
|  |  |  |  |  |  |  |  |  |  | MILNE INLET FUEL STORAGE  |  |  |  |  |  |  |  |  |  |
|  |  |  |  |  |  |  |  |  |  | SEI INDUSTRIES            |  |  |  |  |  |  |  |  |  |
|  |  |  |  |  |  |  |  |  |  | MILNE INLET FUEL STORAGE  |  |  |  |  |  |  |  |  |  |
|  |  |  |  |  |  |  |  |  |  | PIPING PLAN AND ELEVATION |  |  |  |  |  |  |  |  |  |
|  |  |  |  |  |  |  |  |  |  | SCALE                     |  |  |  |  |  |  |  |  |  |
|  |  |  |  |  |  |  |  |  |  | 1 : 1000                  |  |  |  |  |  |  |  |  |  |
|  |  |  |  |  |  |  |  |  |  | DATE                      |  |  |  |  |  |  |  |  |  |
|  |  |  |  |  |  |  |  |  |  | APR/04/07                 |  |  |  |  |  |  |  |  |  |
|  |  |  |  |  |  |  |  |  |  | SHEET                     |  |  |  |  |  |  |  |  |  |
|  |  |  |  |  |  |  |  |  |  | 1                         |  |  |  |  |  |  |  |  |  |
|  |  |  |  |  |  |  |  |  |  | PROJECT NO.               |  |  |  |  |  |  |  |  |  |
|  |  |  |  |  |  |  |  |  |  | 3630-0100                 |  |  |  |  |  |  |  |  |  |
|  |  |  |  |  |  |  |  |  |  | DRAWING NUMBER            |  |  |  |  |  |  |  |  |  |
|  |  |  |  |  |  |  |  |  |  | 36300100-P-M-0004         |  |  |  |  |  |  |  |  |  |
|  |  |  |  |  |  |  |  |  |  | PROJECT NAME              |  |  |  |  |  |  |  |  |  |
|  |  |  |  |  |  |  |  |  |  | MILNE INLET FUEL STORAGE  |  |  |  |  |  |  |  |  |  |
|  |  |  |  |  |  |  |  |  |  | SEI INDUSTRIES            |  |  |  |  |  |  |  |  |  |
|  |  |  |  |  |  |  |  |  |  | MILNE INLET FUEL STORAGE  |  |  |  |  |  |  |  |  |  |
|  |  |  |  |  |  |  |  |  |  | PIPING PLAN AND ELEVATION |  |  |  |  |  |  |  |  |  |
|  |  |  |  |  |  |  |  |  |  | SCALE                     |  |  |  |  |  |  |  |  |  |
|  |  |  |  |  |  |  |  |  |  | 1 : 1000                  |  |  |  |  |  |  |  |  |  |
|  |  |  |  |  |  |  |  |  |  | DATE                      |  |  |  |  |  |  |  |  |  |
|  |  |  |  |  |  |  |  |  |  | APR/04/07                 |  |  |  |  |  |  |  |  |  |
|  |  |  |  |  |  |  |  |  |  | SHEET                     |  |  |  |  |  |  |  |  |  |
|  |  |  |  |  |  |  |  |  |  | 1                         |  |  |  |  |  |  |  |  |  |
|  |  |  |  |  |  |  |  |  |  | PROJECT NO.               |  |  |  |  |  |  |  |  |  |
|  |  |  |  |  |  |  |  |  |  | 3630-0100                 |  |  |  |  |  |  |  |  |  |
|  |  |  |  |  |  |  |  |  |  | DRAWING NUMBER            |  |  |  |  |  |  |  |  |  |
|  |  |  |  |  |  |  |  |  |  | 36300100-P-M-0004         |  |  |  |  |  |  |  |  |  |
|  |  |  |  |  |  |  |  |  |  | PROJECT NAME              |  |  |  |  |  |  |  |  |  |
|  |  |  |  |  |  |  |  |  |  | MILNE INLET FUEL STORAGE  |  |  |  |  |  |  |  |  |  |
|  |  |  |  |  |  |  |  |  |  | SEI INDUSTRIES            |  |  |  |  |  |  |  |  |  |
|  |  |  |  |  |  |  |  |  |  | MILNE INLET FUEL STORAGE  |  |  |  |  |  |  |  |  |  |
|  |  |  |  |  |  |  |  |  |  | PIPING PLAN AND ELEVATION |  |  |  |  |  |  |  |  |  |
|  |  |  |  |  |  |  |  |  |  | SCALE                     |  |  |  |  |  |  |  |  |  |
|  |  |  |  |  |  |  |  |  |  | 1 : 1000                  |  |  |  |  |  |  |  |  |  |
|  |  |  |  |  |  |  |  |  |  | DATE                      |  |  |  |  |  |  |  |  |  |
|  |  |  |  |  |  |  |  |  |  | APR/04/07                 |  |  |  |  |  |  |  |  |  |
|  |  |  |  |  |  |  |  |  |  | SHEET                     |  |  |  |  |  |  |  |  |  |
|  |  |  |  |  |  |  |  |  |  | 1                         |  |  |  |  |  |  |  |  |  |
|  |  |  |  |  |  |  |  |  |  | PROJECT NO.               |  |  |  |  |  |  |  |  |  |
|  |  |  |  |  |  |  |  |  |  | 3630-0100                 |  |  |  |  |  |  |  |  |  |
|  |  |  |  |  |  |  |  |  |  | DRAWING NUMBER            |  |  |  |  |  |  |  |  |  |
|  |  |  |  |  |  |  |  |  |  | 36300100-P-M-0004         |  |  |  |  |  |  |  |  |  |
|  |  |  |  |  |  |  |  |  |  | PROJECT NAME              |  |  |  |  |  |  |  |  |  |
|  |  |  |  |  |  |  |  |  |  | MILNE INLET FUEL STORAGE  |  |  |  |  |  |  |  |  |  |
|  |  |  |  |  |  |  |  |  |  | SEI INDUSTRIES            |  |  |  |  |  |  |  |  |  |
|  |  |  |  |  |  |  |  |  |  | MILNE INLET FUEL STORAGE  |  |  |  |  |  |  |  |  |  |
|  |  |  |  |  |  |  |  |  |  | PIPING PLAN AND ELEVATION |  |  |  |  |  |  |  |  |  |
|  |  |  |  |  |  |  |  |  |  | SCALE                     |  |  |  |  |  |  |  |  |  |
|  |  |  |  |  |  |  |  |  |  | 1 : 1000                  |  |  |  |  |  |  |  |  |  |
|  |  |  |  |  |  |  |  |  |  | DATE                      |  |  |  |  |  |  |  |  |  |
|  |  |  |  |  |  |  |  |  |  | APR/04/07                 |  |  |  |  |  |  |  |  |  |
|  |  |  |  |  |  |  |  |  |  | SHEET                     |  |  |  |  |  |  |  |  |  |
|  |  |  |  |  |  |  |  |  |  | 1                         |  |  |  |  |  |  |  |  |  |
|  |  |  |  |  |  |  |  |  |  | PROJECT NO.               |  |  |  |  |  |  |  |  |  |
|  |  |  |  |  |  |  |  |  |  | 3630-0100                 |  |  |  |  |  |  |  |  |  |
|  |  |  |  |  |  |  |  |  |  | DRAWING NUMBER            |  |  |  |  |  |  |  |  |  |
|  |  |  |  |  |  |  |  |  |  | 36300100-P-M-0004         |  |  |  |  |  |  |  |  |  |
|  |  |  |  |  |  |  |  |  |  | PROJECT NAME              |  |  |  |  |  |  |  |  |  |
|  |  |  |  |  |  |  |  |  |  | MILNE INLET FUEL STORAGE  |  |  |  |  |  |  |  |  |  |
|  |  |  |  |  |  |  |  |  |  | SEI INDUSTRIES            |  |  |  |  |  |  |  |  |  |
|  |  |  |  |  |  |  |  |  |  | MILNE INLET FUEL STORAGE  |  |  |  |  |  |  |  |  |  |
|  |  |  |  |  |  |  |  |  |  | PIPING PLAN AND ELEVATION |  |  |  |  |  |  |  |  |  |
|  |  |  |  |  |  |  |  |  |  | SCALE                     |  |  |  |  |  |  |  |  |  |
|  |  |  |  |  |  |  |  |  |  | 1 : 1000                  |  |  |  |  |  |  |  |  |  |
|  |  |  |  |  |  |  |  |  |  | DATE                      |  |  |  |  |  |  |  |  |  |
|  |  |  |  |  |  |  |  |  |  | APR/04/07                 |  |  |  |  |  |  |  |  |  |
|  |  |  |  |  |  |  |  |  |  | SHEET                     |  |  |  |  |  |  |  |  |  |
|  |  |  |  |  |  |  |  |  |  | 1                         |  |  |  |  |  |  |  |  |  |
|  |  |  |  |  |  |  |  |  |  | PROJECT NO.               |  |  |  |  |  |  |  |  |  |
|  |  |  |  |  |  |  |  |  |  | 3630-0100                 |  |  |  |  |  |  |  |  |  |
|  |  |  |  |  |  |  |  |  |  | DRAWING NUMBER            |  |  |  |  |  |  |  |  |  |
|  |  |  |  |  |  |  |  |  |  | 36300100-P-M-0004         |  |  |  |  |  |  |  |  |  |
|  |  |  |  |  |  |  |  |  |  | PROJECT NAME              |  |  |  |  |  |  |  |  |  |
|  |  |  |  |  |  |  |  |  |  | MILNE INLET FUEL STORAGE  |  |  |  |  |  |  |  |  |  |
|  |  |  |  |  |  |  |  |  |  | SEI INDUSTRIES            |  |  |  |  |  |  |  |  |  |
|  |  |  |  |  |  |  |  |  |  | MILNE INLET FUEL STORAGE  |  |  |  |  |  |  |  |  |  |
|  |  |  |  |  |  |  |  |  |  | PIPING PLAN AND ELEVATION |  |  |  |  |  |  |  |  |  |
|  |  |  |  |  |  |  |  |  |  | SCALE                     |  |  |  |  |  |  |  |  |  |
|  |  |  |  |  |  |  |  |  |  | 1 : 1000                  |  |  |  |  |  |  |  |  |  |
|  |  |  |  |  |  |  |  |  |  | DATE                      |  |  |  |  |  |  |  |  |  |
|  |  |  |  |  |  |  |  |  |  | APR/04/07                 |  |  |  |  |  |  |  |  |  |
|  |  |  |  |  |  |  |  |  |  | SHEET                     |  |  |  |  |  |  |  |  |  |
|  |  |  |  |  |  |  |  |  |  | 1                         |  |  |  |  |  |  |  |  |  |
|  |  |  |  |  |  |  |  |  |  | PROJECT NO.               |  |  |  |  |  |  |  |  |  |
|  |  |  |  |  |  |  |  |  |  | 3630-0100                 |  |  |  |  |  |  |  |  |  |
|  |  |  |  |  |  |  |  |  |  | DRAWING NUMBER            |  |  |  |  |  |  |  |  |  |
|  |  |  |  |  |  |  |  |  |  | 36300100-P-M-0004         |  |  |  |  |  |  |  |  |  |
|  |  |  |  |  |  |  |  |  |  | PROJECT NAME              |  |  |  |  |  |  |  |  |  |
|  |  |  |  |  |  |  |  |  |  | MILNE INLET FUEL STORAGE  |  |  |  |  |  |  |  |  |  |
|  |  |  |  |  |  |  |  |  |  | SEI INDUSTRIES            |  |  |  |  |  |  |  |  |  |
|  |  |  |  |  |  |  |  |  |  | MILNE INLET FUEL STORAGE  |  |  |  |  |  |  |  |  |  |
|  |  |  |  |  |  |  |  |  |  | PIPING PLAN AND ELEVATION |  |  |  |  |  |  |  |  |  |
|  |  |  |  |  |  |  |  |  |  | SCALE                     |  |  |  |  |  |  |  |  |  |
|  |  |  |  |  |  |  |  |  |  | 1 : 1000                  |  |  |  |  |  |  |  |  |  |
|  |  |  |  |  |  |  |  |  |  | DATE                      |  |  |  |  |  |  |  |  |  |
|  |  |  |  |  |  |  |  |  |  | APR/04/07                 |  |  |  |  |  |  |  |  |  |
|  |  |  |  |  |  |  |  |  |  | SHEET                     |  |  |  |  |  |  |  |  |  |
|  |  |  |  |  |  |  |  |  |  | 1                         |  |  |  |  |  |  |  |  |  |
|  |  |  |  |  |  |  |  |  |  | PROJECT NO.               |  |  |  |  |  |  |  |  |  |
|  |  |  |  |  |  |  |  |  |  | 3630-0100                 |  |  |  |  |  |  |  |  |  |
|  |  |  |  |  |  |  |  |  |  | DRAWING NUMBER            |  |  |  |  |  |  |  |  |  |
|  |  |  |  |  |  |  |  |  |  | 36300100-P-M-0004         |  |  |  |  |  |  |  |  |  |
|  |  |  |  |  |  |  |  |  |  | PROJECT NAME              |  |  |  |  |  |  |  |  |  |
|  |  |  |  |  |  |  |  |  |  | MILNE INLET FUEL STORAGE  |  |  |  |  |  |  |  |  |  |
|  |  |  |  |  |  |  |  |  |  | SEI INDUSTRIES            |  |  |  |  |  |  |  |  |  |
|  |  |  |  |  |  |  |  |  |  | MILNE INLET FUEL STORAGE  |  |  |  |  |  |  |  |  |  |
|  |  |  |  |  |  |  |  |  |  | PIPING PLAN AND ELEVATION |  |  |  |  |  |  |  |  |  |
|  |  |  |  |  |  |  |  |  |  | SCALE                     |  |  |  |  |  |  |  |  |  |
|  |  |  |  |  |  |  |  |  |  | 1 : 1000                  |  |  |  |  |  |  |  |  |  |
|  |  |  |  |  |  |  |  |  |  | DATE                      |  |  |  |  |  |  |  |  |  |
|  |  |  |  |  |  |  |  |  |  | APR/04/07                 |  |  |  |  |  |  |  |  |  |
|  |  |  |  |  |  |  |  |  |  | SHEET                     |  |  |  |  |  |  |  |  |  |
|  |  |  |  |  |  |  |  |  |  | 1                         |  |  |  |  |  |  |  |  |  |
|  |  |  |  |  |  |  |  |  |  | PROJECT NO.               |  |  |  |  |  |  |  |  |  |
|  |  |  |  |  |  |  |  |  |  | 3630-0100                 |  |  |  |  |  |  |  |  |  |
|  |  |  |  |  |  |  |  |  |  | DRAWING NUMBER            |  |  |  |  |  |  |  |  |  |
|  |  |  |  |  |  |  |  |  |  | 36300100-P-M-0004         |  |  |  |  |  |  |  |  |  |
|  |  |  |  |  |  |  |  |  |  | PROJECT NAME              |  |  |  |  |  |  |  |  |  |
|  |  |  |  |  |  |  |  |  |  | MILNE INLET FUEL STORAGE  |  |  |  |  |  |  |  |  |  |
|  |  |  |  |  |  |  |  |  |  | SEI INDUSTRIES            |  |  |  |  |  |  |  |  |  |
|  |  |  |  |  |  |  |  |  |  | MILNE INLET FUEL STORAGE  |  |  |  |  |  |  |  |  |  |
|  |  |  |  |  |  |  |  |  |  | PIPING PLAN AND ELEVATION |  |  |  |  |  |  |  |  |  |
|  |  |  |  |  |  |  |  |  |  | SCALE                     |  |  |  |  |  |  |  |  |  |
|  |  |  |  |  |  |  |  |  |  | 1 : 1000                  |  |  |  |  |  |  |  |  |  |
|  |  |  |  |  |  |  |  |  |  | DATE                      |  |  |  |  |  |  |  |  |  |
|  |  |  |  |  |  |  |  |  |  | APR/04/07                 |  |  |  |  |  |  |  |  |  |
|  |  |  |  |  |  |  |  |  |  | SHEET                     |  |  |  |  |  |  |  |  |  |
|  |  |  |  |  |  |  |  |  |  | 1                         |  |  |  |  |  |  |  |  |  |
|  |  |  |  |  |  |  |  |  |  | PROJECT NO.               |  |  |  |  |  |  |  |  |  |
|  |  |  |  |  |  |  |  |  |  | 3630-0100                 |  |  |  |  |  |  |  |  |  |
|  |  |  |  |  |  |  |  |  |  | DRAWING NUMBER            |  |  |  |  |  |  |  |  |  |
|  |  |  |  |  |  |  |  |  |  | 36300100-P-M-0004         |  |  |  |  |  |  |  |  |  |
|  |  |  |  |  |  |  |  |  |  | PROJECT NAME              |  |  |  |  |  |  |  |  |  |
|  |  |  |  |  |  |  |  |  |  | MILNE INLET FUEL STORAGE  |  |  |  |  |  |  |  |  |  |
|  |  |  |  |  |  |  |  |  |  | SEI INDUSTRIES            |  |  |  |  |  |  |  |  |  |
|  |  |  |  |  |  |  |  |  |  | MILNE INLET FUEL STORAGE  |  |  |  |  |  |  |  |  |  |
|  |  |  |  |  |  |  |  |  |  | PIPING PLAN AND ELEVATION |  |  |  |  |  |  |  |  |  |
|  |  |  |  |  |  |  |  |  |  | SCALE                     |  |  |  |  |  |  |  |  |  |
|  |  |  |  |  |  |  |  |  |  | 1 : 1000                  |  |  |  |  |  |  |  |  |  |
|  |  |  |  |  |  |  |  |  |  | DATE                      |  |  |  |  |  |  |  |  |  |
|  |  |  |  |  |  |  |  |  |  | APR/04/07                 |  |  |  |  |  |  |  |  |  |
|  |  |  |  |  |  |  |  |  |  | SHEET                     |  |  |  |  |  |  |  |  |  |
|  |  |  |  |  |  |  |  |  |  | 1                         |  |  |  |  |  |  |  |  |  |
|  |  |  |  |  |  |  |  |  |  | PROJECT NO.               |  |  |  |  |  |  |  |  |  |
|  |  |  |  |  |  |  |  |  |  | 3630-0100                 |  |  |  |  |  |  |  |  |  |
|  |  |  |  |  |  |  |  |  |  | DRAWING NUMBER            |  |  |  |  |  |  |  |  |  |
|  |  |  |  |  |  |  |  |  |  | 36300100-P-M-0004         |  |  |  |  |  |  |  |  |  |
|  |  |  |  |  |  |  |  |  |  | PROJECT NAME              |  |  |  |  |  |  |  |  |  |
|  |  |  |  |  |  |  |  |  |  | MILNE INLET FUEL STORAGE  |  |  |  |  |  |  |  |  |  |
|  |  |  |  |  |  |  |  |  |  | SEI INDUSTRIES            |  |  |  |  |  |  |  |  |  |
|  |  |  |  |  |  |  |  |  |  | MILNE INLET FUEL STORAGE  |  |  |  |  |  |  |  |  |  |
|  |  |  |  |  |  |  |  |  |  | PIPING PLAN AND ELEVATION |  |  |  |  |  |  |  |  |  |
|  |  |  |  |  |  |  |  |  |  | SCALE                     |  |  |  |  |  |  |  |  |  |
|  |  |  |  |  |  |  |  |  |  | 1 : 1000                  |  |  |  |  |  |  |  |  |  |
|  |  |  |  |  |  |  |  |  |  | DATE                      |  |  |  |  |  |  |  |  |  |
|  |  |  |  |  |  |  |  |  |  | APR/04/07                 |  |  |  |  |  |  |  |  |  |
|  |  |  |  |  |  |  |  |  |  | SHEET                     |  |  |  |  |  |  |  |  |  |
|  |  |  |  |  |  |  |  |  |  | 1                         |  |  |  |  |  |  |  |  |  |
|  |  |  |  |  |  |  |  |  |  | PROJECT NO.               |  |  |  |  |  |  |  |  |  |
|  |  |  |  |  |  |  |  |  |  | 3630-0100                 |  |  |  |  |  |  |  |  |  |
|  |  |  |  |  |  |  |  |  |  | DRAWING NUMBER            |  |  |  |  |  |  |  |  |  |
|  |  |  |  |  |  |  |  |  |  | 36300100-P-M-0004         |  |  |  |  |  |  |  |  |  |
|  |  |  |  |  |  |  |  |  |  | PROJECT NAME              |  |  |  |  |  |  |  |  |  |
|  |  |  |  |  |  |  |  |  |  | MILNE INLET FUEL STORAGE  |  |  |  |  |  |  |  |  |  |
|  |  |  |  |  |  |  |  |  |  | SEI INDUSTRIES            |  |  |  |  |  |  |  |  |  |
|  |  |  |  |  |  |  |  |  |  | MILNE INLET FUEL STORAGE  |  |  |  |  |  |  |  |  |  |
|  |  |  |  |  |  |  |  |  |  | PIPING PLAN AND ELEVATION |  |  |  |  |  |  |  |  |  |
|  |  |  |  |  |  |  |  |  |  | SCALE                     |  |  |  |  |  |  |  |  |  |
|  |  |  |  |  |  |  |  |  |  | 1 : 1000                  |  |  |  |  |  |  |  |  |  |
|  |  |  |  |  |  |  |  |  |  | DATE                      |  |  |  |  |  |  |  |  |  |
|  |  |  |  |  |  |  |  |  |  | APR/04/07                 |  |  |  |  |  |  |  |  |  |
|  |  |  |  |  |  |  |  |  |  | SHEET                     |  |  |  |  |  |  |  |  |  |
|  |  |  |  |  |  |  |  |  |  | 1                         |  |  |  |  |  |  |  |  |  |
|  |  |  |  |  |  |  |  |  |  | PROJECT NO.               |  |  |  |  |  |  |  |  |  |
|  |  |  |  |  |  |  |  |  |  | 3630-0100                 |  |  |  |  |  |  |  |  |  |
|  |  |  |  |  |  |  |  |  |  | DRAWING NUMBER            |  |  |  |  |  |  |  |  |  |
|  |  |  |  |  |  |  |  |  |  | 36300100-P-M-0004         |  |  |  |  |  |  |  |  |  |
|  |  |  |  |  |  |  |  |  |  | PROJECT NAME              |  |  |  |  |  |  |  |  |  |
|  |  |  |  |  |  |  |  |  |  | MILNE INLET FUEL STORAGE  |  |  |  |  |  |  |  |  |  |
|  |  |  |  |  |  |  |  |  |  | SEI INDUSTRIES            |  |  |  |  |  |  |  |  |  |
|  |  |  |  |  |  |  |  |  |  | MILNE INLET FUEL STORAGE  |  |  |  |  |  |  |  |  |  |
|  |  |  |  |  |  |  |  |  |  | PIPING PLAN AND ELEVATION |  |  |  |  |  |  |  |  |  |
|  |  |  |  |  |  |  |  |  |  | SCALE                     |  |  |  |  |  |  |  |  |  |
|  |  |  |  |  |  |  |  |  |  | 1 : 1000                  |  |  |  |  |  |  |  |  |  |
|  |  |  |  |  |  |  |  |  |  | DATE                      |  |  |  |  |  |  |  |  |  |
|  |  |  |  |  |  |  |  |  |  | APR/04/07                 |  |  |  |  |  |  |  |  |  |
|  |  |  |  |  |  |  |  |  |  | SHEET                     |  |  |  |  |  |  |  |  |  |
|  |  |  |  |  |  |  |  |  |  | 1                         |  |  |  |  |  |  |  |  |  |
|  |  |  |  |  |  |  |  |  |  | PROJECT NO.               |  |  |  |  |  |  |  |  |  |
|  |  |  |  |  |  |  |  |  |  | 3630-0100                 |  |  |  |  |  |  |  |  |  |
|  |  |  |  |  |  |  |  |  |  | DRAWING NUMBER            |  |  |  |  |  |  |  |  |  |
|  |  |  |  |  |  |  |  |  |  | 36300100-P-M-0004         |  |  |  |  |  |  |  |  |  |
|  |  |  |  |  |  |  |  |  |  | PROJECT NAME              |  |  |  |  |  |  |  |  |  |
|  |  |  |  |  |  |  |  |  |  | MILNE INLET FUEL STORAGE  |  |  |  |  |  |  |  |  |  |
|  |  |  |  |  |  |  |  |  |  | SEI INDUSTRIES            |  |  |  |  |  |  |  |  |  |
|  |  |  |  |  |  |  |  |  |  | MILNE INLET FUEL STORAGE  |  |  |  |  |  |  |  |  |  |
|  |  |  |  |  |  |  |  |  |  | PIPING PLAN AND ELEVATION |  |  |  |  |  |  |  |  |  |
|  |  |  |  |  |  |  |  |  |  | SCALE                     |  |  |  |  |  |  |  |  |  |
|  |  |  |  |  |  |  |  |  |  | 1 : 1000                  |  |  |  |  |  |  |  |  |  |
|  |  |  |  |  |  |  |  |  |  | DATE                      |  |  |  |  |  |  |  |  |  |
|  |  |  |  |  |  |  |  |  |  | APR/04/07                 |  |  |  |  |  |  |  |  |  |
|  |  |  |  |  |  |  |  |  |  | SHEET                     |  |  |  |  |  |  |  |  |  |
|  |  |  |  |  |  |  |  |  |  | 1                         |  |  |  |  |  |  |  |  |  |
|  |  |  |  |  |  |  |  |  |  | PROJECT NO.               |  |  |  |  |  |  |  |  |  |
|  |  |  |  |  |  |  |  |  |  | 3630-0100                 |  |  |  |  |  |  |  |  |  |
|  |  |  |  |  |  |  |  |  |  | DRAWING NUMBER            |  |  |  |  |  |  |  |  |  |
|  |  |  |  |  |  |  |  |  |  | 36300100-P-M-0004         |  |  |  |  |  |  |  |  |  |
|  |  |  |  |  |  |  |  |  |  | PROJECT NAME              |  |  |  |  |  |  |  |  |  |
|  |  |  |  |  |  |  |  |  |  | MILNE INLET FUEL STORAGE  |  |  |  |  |  |  |  |  |  |
|  |  |  |  |  |  |  |  |  |  | SEI INDUSTRIES            |  |  |  |  |  |  |  |  |  |
|  |  |  |  |  |  |  |  |  |  | MILNE INLET FUEL STORAGE  |  |  |  |  |  |  |  |  |  |
|  |  |  |  |  |  |  |  |  |  | PIPING PLAN AND ELEVATION |  |  |  |  |  |  |  |  |  |
|  |  |  |  |  |  |  |  |  |  | SCALE                     |  |  |  |  |  |  |  |  |  |
|  |  |  |  |  |  |  |  |  |  | 1 : 1000                  |  |  |  |  |  |  |  |  |  |
|  |  |  |  |  |  |  |  |  |  | DATE                      |  |  |  |  |  |  |  |  |  |
|  |  |  |  |  |  |  |  |  |  | APR/04/07                 |  |  |  |  |  |  |  |  |  |
|  |  |  |  |  |  |  |  |  |  | SHEET                     |  |  |  |  |  |  |  |  |  |
|  |  |  |  |  |  |  |  |  |  | 1                         |  |  |  |  |  |  |  |  |  |
|  |  |  |  |  |  |  |  |  |  | PROJECT NO.               |  |  |  |  |  |  |  |  |  |
|  |  |  |  |  |  |  |  |  |  | 3630-0100                 |  |  |  |  |  |  |  |  |  |
|  |  |  |  |  |  |  |  |  |  | DRAWING NUMBER            |  |  |  |  |  |  |  |  |  |
|  |  |  |  |  |  |  |  |  |  | 36300100-P-M-0004         |  |  |  |  |  |  |  |  |  |
|  |  |  |  |  |  |  |  |  |  | PROJECT NAME              |  |  |  |  |  |  |  |  |  |
|  |  |  |  |  |  |  |  |  |  | MILNE INLET FUEL STORAGE  |  |  |  |  |  |  |  |  |  |
|  |  |  |  |  |  |  |  |  |  | SEI INDUSTRIES            |  |  |  |  |  |  |  |  |  |
|  |  |  |  |  |  |  |  |  |  | MILNE INLET FUEL STORAGE  |  |  |  |  |  |  |  |  |  |
|  |  |  |  |  |  |  |  |  |  | PIPING PLAN AND ELEVATION |  |  |  |  |  |  |  |  |  |
|  |  |  |  |  |  |  |  |  |  | SCALE                     |  |  |  |  |  |  |  |  |  |
|  |  |  |  |  |  |  |  |  |  | 1 : 1000                  |  |  |  |  |  |  |  |  |  |
|  |  |  |  |  |  |  |  |  |  | DATE                      |  |  |  |  |  |  |  |  |  |
|  |  |  |  |  |  |  |  |  |  | APR/04/07                 |  |  |  |  |  |  |  |  |  |
|  |  |  |  |  |  |  |  |  |  | SHEET                     |  |  |  |  |  |  |  |  |  |
|  |  |  |  |  |  |  |  |  |  | 1                         |  |  |  |  |  |  |  |  |  |
|  |  |  |  |  |  |  |  |  |  | PROJECT NO.               |  |  |  |  |  |  |  |  |  |
|  |  |  |  |  |  |  |  |  |  | 3630-0100                 |  |  |  |  |  |  |  |  |  |
|  |  |  |  |  |  |  |  |  |  | DRAWING NUMBER            |  |  |  |  |  |  |  |  |  |
|  |  |  |  |  |  |  |  |  |  | 36300100-P-M-0004         |  |  |  |  |  |  |  |  |  |
|  |  |  |  |  |  |  |  |  |  | PROJECT NAME              |  |  |  |  |  |  |  |  |  |
|  |  |  |  |  |  |  |  |  |  | MILNE INLET FUEL STORAGE  |  |  |  |  |  |  |  |  |  |
|  |  |  |  |  |  |  |  |  |  | SEI INDUSTRIES            |  |  |  |  |  |  |  |  |  |
|  |  |  |  |  |  |  |  |  |  | MILNE INLET FUEL STORAGE  |  |  |  |  |  |  |  |  |  |
|  |  |  |  |  |  |  |  |  |  | PIPING PLAN AND ELEVATION |  |  |  |  |  |  |  |  |  |
|  |  |  |  |  |  |  |  |  |  | SCALE                     |  |  |  |  |  |  |  |  |  |
|  |  |  |  |  |  |  |  |  |  | 1 : 1000                  |  |  |  |  |  |  |  |  |  |
|  |  |  |  |  |  |  |  |  |  | DATE                      |  |  |  |  |  |  |  |  |  |
|  |  |  |  |  |  |  |  |  |  | APR/04/07                 |  |  |  |  |  |  |  |  |  |
|  |  |  |  |  |  |  |  |  |  | SHEET                     |  |  |  |  |  |  |  |  |  |
|  |  |  |  |  |  |  |  |  |  | 1                         |  |  |  |  |  |  |  |  |  |
|  |  |  |  |  |  |  |  |  |  | PROJECT NO.               |  |  |  |  |  |  |  |  |  |
|  |  |  |  |  |  |  |  |  |  | 3630-0100                 |  |  |  |  |  |  |  |  |  |
|  |  |  |  |  |  |  |  |  |  | DRAWING NUMBER            |  |  |  |  |  |  |  |  |  |
|  |  |  |  |  |  |  |  |  |  | 36300100-P-M-0004         |  |  |  |  |  |  |  |  |  |
|  |  |  |  |  |  |  |  |  |  | PROJECT NAME              |  |  |  |  |  |  |  |  |  |
|  |  |  |  |  |  |  |  |  |  | MILNE INLET FUEL STORAGE  |  |  |  |  |  |  |  |  |  |
|  |  |  |  |  |  |  |  |  |  | SEI INDUSTRIES            |  |  |  |  |  |  |  |  |  |
|  |  |  |  |  |  |  |  |  |  | MILNE INLET FUEL STORAGE  |  |  |  |  |  |  |  |  |  |
|  |  |  |  |  |  |  |  |  |  | PIPING PLAN AND ELEVATION |  |  |  |  |  |  |  |  |  |
|  |  |  |  |  |  |  |  |  |  | SCALE                     |  |  |  |  |  |  |  |  |  |
|  |  |  |  |  |  |  |  |  |  | 1 : 1000                  |  |  |  |  |  |  |  |  |  |
|  |  |  |  |  |  |  |  |  |  | DATE                      |  |  |  |  |  |  |  |  |  |
|  |  |  |  |  |  |  |  |  |  | APR/04/07                 |  |  |  |  |  |  |  |  |  |
|  |  |  |  |  |  |  |  |  |  | SHEET                     |  |  |  |  |  |  |  |  |  |
|  |  |  |  |  |  |  |  |  |  | 1                         |  |  |  |  |  |  |  |  |  |
|  |  |  |  |  |  |  |  |  |  | PROJECT NO.               |  |  |  |  |  |  |  |  |  |
|  |  |  |  |  |  |  |  |  |  | 3630-0100                 |  |  |  |  |  |  |  |  |  |
|  |  |  |  |  |  |  |  |  |  | DRAWING NUMBER            |  |  |  |  |  |  |  |  |  |
|  |  |  |  |  |  |  |  |  |  | 36300100-P-M-0004         |  |  |  |  |  |  |  |  |  |
|  |  |  |  |  |  |  |  |  |  | PROJECT NAME              |  |  |  |  |  |  |  |  |  |
|  |  |  |  |  |  |  |  |  |  | MILNE INLET FUEL STORAGE  |  |  |  |  |  |  |  |  |  |
|  |  |  |  |  |  |  |  |  |  | SEI INDUSTRIES            |  |  |  |  |  |  |  |  |  |
|  |  |  |  |  |  |  |  |  |  | MILNE INLET FUEL STORAGE  |  |  |  |  |  |  |  |  |  |
|  |  |  |  |  |  |  |  |  |  | PIPING PLAN AND ELEVATION |  |  |  |  |  |  |  |  |  |
|  |  |  |  |  |  |  |  |  |  | SCALE                     |  |  |  |  |  |  |  |  |  |
|  |  |  |  |  |  |  |  |  |  | 1 : 1000                  |  |  |  |  |  |  |  |  |  |
|  |  |  |  |  |  |  |  |  |  | DATE                      |  |  |  |  |  |  |  |  |  |
|  |  |  |  |  |  |  |  |  |  | APR/04/07                 |  |  |  |  |  |  |  |  |  |
|  |  |  |  |  |  |  |  |  |  | SHEET                     |  |  |  |  |  |  |  |  |  |
|  |  |  |  |  |  |  |  |  |  | 1                         |  |  |  |  |  |  |  |  |  |
|  |  |  |  |  |  |  |  |  |  | PROJECT NO.               |  |  |  |  |  |  |  |  |  |
|  |  |  |  |  |  |  |  |  |  | 3630-0100                 |  |  |  |  |  |  |  |  |  |
|  |  |  |  |  |  |  |  |  |  | DRAWING NUMBER            |  |  |  |  |  |  |  |  |  |
|  |  |  |  |  |  |  |  |  |  | 36300100-P-M-0004         |  |  |  |  |  |  |  |  |  |
|  |  |  |  |  |  |  |  |  |  | PROJECT NAME              |  |  |  |  |  |  |  |  |  |
|  |  |  |  |  |  |  |  |  |  | MILNE INLET FUEL STORAGE  |  |  |  |  |  |  |  |  |  |
|  |  |  |  |  |  |  |  |  |  | SEI INDUSTRIES            |  |  |  |  |  |  |  |  |  |
|  |  |  |  |  |  |  |  |  |  | MILNE INLET FUEL STORAGE  |  |  |  |  |  |  |  |  |  |
|  |  |  |  |  |  |  |  |  |  | PIPING PLAN AND ELEVATION |  |  |  |  |  |  |  |  |  |
|  |  |  |  |  |  |  |  |  |  | SCALE                     |  |  |  |  |  |  |  |  |  |
|  |  |  |  |  |  |  |  |  |  | 1 : 1000                  |  |  |  |  |  |  |  |  |  |
|  |  |  |  |  |  |  |  |  |  |                           |  |  |  |  |  |  |  |  |  |

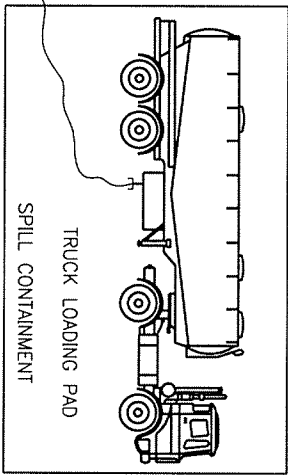
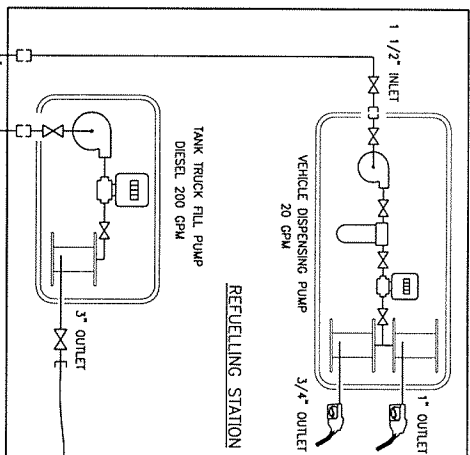
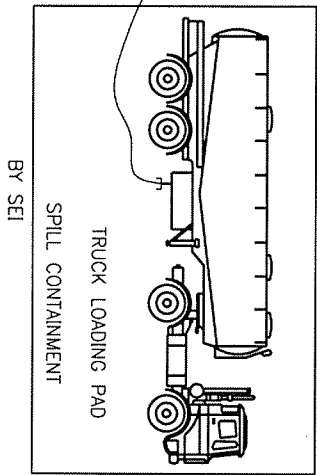
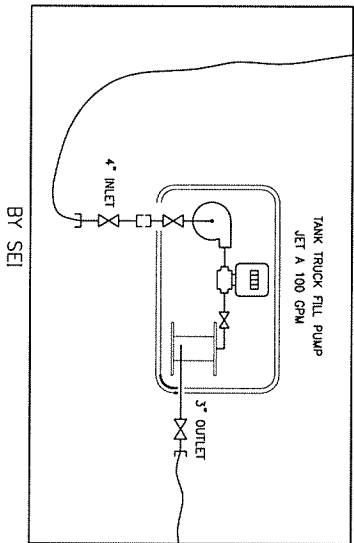
LEGEND

- ⋈ GATE VALVE
- ⌞ CHECK VALVE
- ◊ REDUCER
- QUICK COUPLER ADAPTOR (MALLON)
- HOSE
- PRESSURE GAGE
- PIC INDICATOR



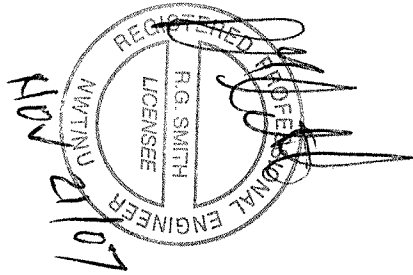
JET A TERRA TANKS  
CAPCITY: 4 x 30,000 USGPM

DIESEL TERRA TANKS  
CAPCITY: 68 x 30,000 USGPM

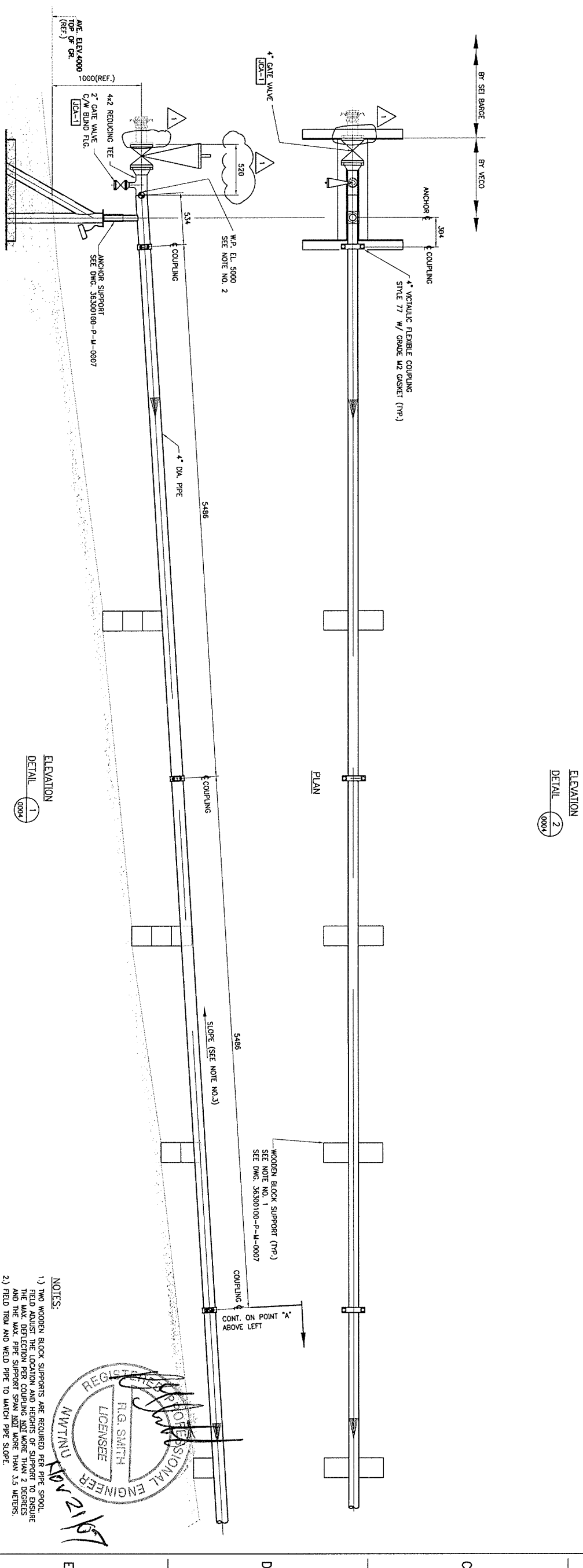
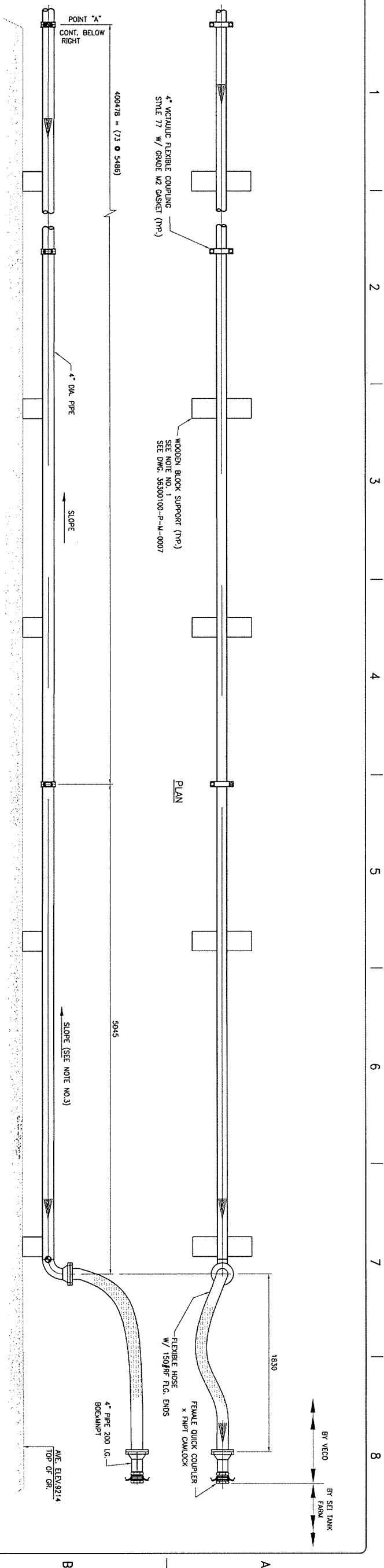


| DRAWING No. |            |   |     | TITLE |     |            |   | REFERENCE DRAWINGS |     |     |            | REVISIONS                                     |     |     |     |
|-------------|------------|---|-----|-------|-----|------------|---|--------------------|-----|-----|------------|---|-----|-----|-----|
| REV         | DATE       | DESCRIPTION                                   | CHK | APP   | REV | DATE       | DESCRIPTION                                   | CHK                | APP | REV | DATE       | DESCRIPTION                                   | CHK | APP | REV |
| 1           | 2007/11/19 | ISSUED FOR FINAL RECORD (AS BUILT INFO ADDED) | JOW | RB    | 1   | 2007/11/19 | ISSUED FOR FINAL RECORD (AS BUILT INFO ADDED) | JOW                | RB  | 1   | 2007/11/19 | ISSUED FOR FINAL RECORD (AS BUILT INFO ADDED) | JOW | RB  | 1   |
| 0           | 2007/09/18 | ISSUED FOR CONSTRUCTION                       | JOW | RB    | 0   | 2007/09/18 | ISSUED FOR CONSTRUCTION                       | JOW                | RB  | 0   | 2007/09/18 | ISSUED FOR CONSTRUCTION                       | JOW | RB  | 0   |
| A           | 2007/09/04 | ISSUED FOR CLIENT REVIEW                      | JOW | RB    | A   | 2007/09/04 | ISSUED FOR CLIENT REVIEW                      | JOW                | RB  | A   | 2007/09/04 | ISSUED FOR CLIENT REVIEW                      | JOW | RB  | A   |

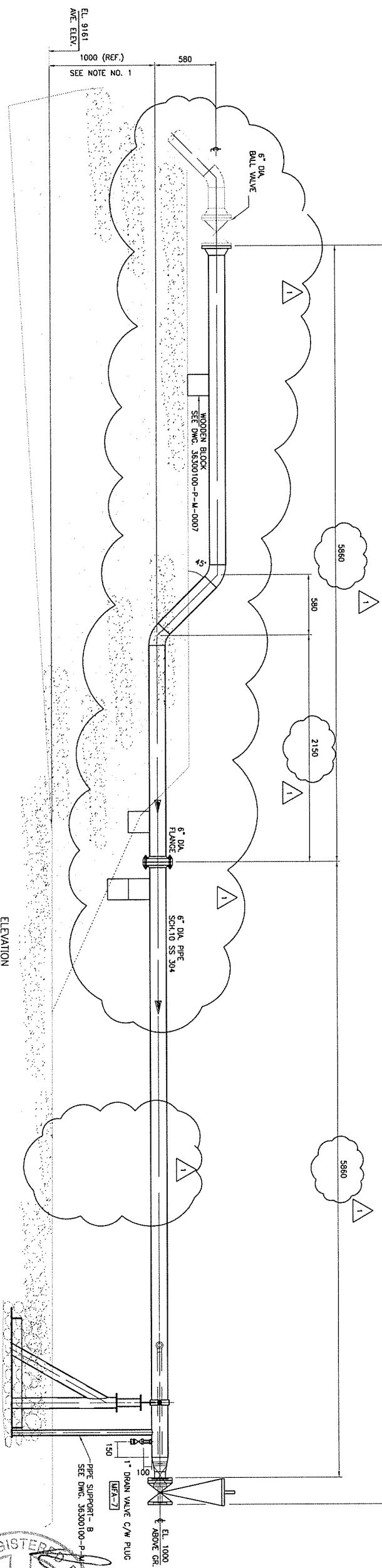
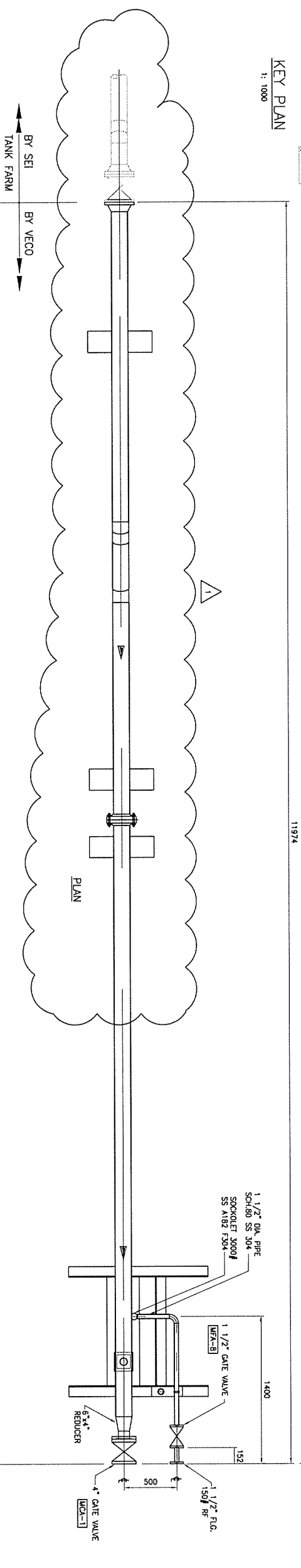
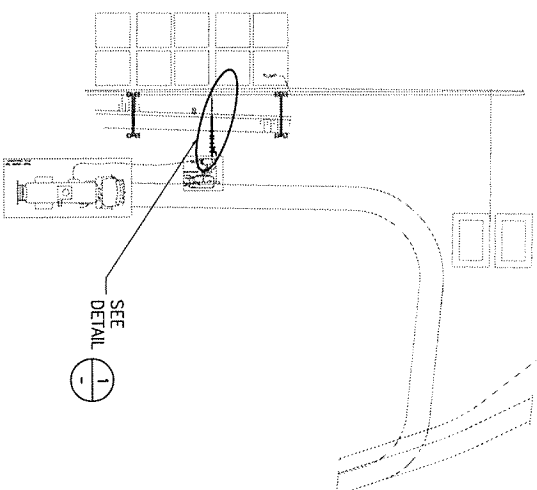
| DRAWING No. |            |   |     | TITLE |     |            |   | REFERENCE DRAWINGS |     |     |            | REVISIONS                                     |     |     |     |
|-------------|------------|---|-----|-------|-----|------------|---|--------------------|-----|-----|------------|---|-----|-----|-----|
| REV         | DATE       | DESCRIPTION                                   | CHK | APP   | REV | DATE       | DESCRIPTION                                   | CHK                | APP | REV | DATE       | DESCRIPTION                                   | CHK | APP | REV |
| 1           | 2007/11/19 | ISSUED FOR FINAL RECORD (AS BUILT INFO ADDED) | JOW | RB    | 1   | 2007/11/19 | ISSUED FOR FINAL RECORD (AS BUILT INFO ADDED) | JOW                | RB  | 1   | 2007/11/19 | ISSUED FOR FINAL RECORD (AS BUILT INFO ADDED) | JOW | RB  | 1   |
| 0           | 2007/09/18 | ISSUED FOR CONSTRUCTION                       | JOW | RB    | 0   | 2007/09/18 | ISSUED FOR CONSTRUCTION                       | JOW                | RB  | 0   | 2007/09/18 | ISSUED FOR CONSTRUCTION                       | JOW | RB  | 0   |
| A           | 2007/09/04 | ISSUED FOR CLIENT REVIEW                      | JOW | RB    | A   | 2007/09/04 | ISSUED FOR CLIENT REVIEW                      | JOW                | RB  | A   | 2007/09/04 | ISSUED FOR CLIENT REVIEW                      | JOW | RB  | A   |



| PROJECT NAME             |  |  |  | SCALE     |  |  |  |
|--------------------------|--|--|--|-----------|--|--|--|
| MILNE INLET FUEL STORAGE |  |  |  | NONE      |  |  |  |
| SEI INDUSTRIES           |  |  |  | DATE      |  |  |  |
| MILNE INLET FUEL STORAGE |  |  |  | APR/09/07 |  |  |  |
| PROCESS FLOW DIAGRAM     |  |  |  | SHEET     |  |  |  |
| 1                        |  |  |  | REV       |  |  |  |
| 1                        |  |  |  | 1         |  |  |  |



|              |  |  |  |  |  |  |  |  |  |                          |  |  |  |  |  |  |  |  |  |
|--------------|--|--|--|--|--|--|--|--|--|--------------------------|--|--|--|--|--|--|--|--|--|
| PROJECT NAME |  |  |  |  |  |  |  |  |  | MILNE INLET FUEL STORAGE |  |  |  |  |  |  |  |  |  |
| DRAWN        |  |  |  |  |  |  |  |  |  | SCALE                    |  |  |  |  |  |  |  |  |  |
| QMS          |  |  |  |  |  |  |  |  |  | 1 : 20                   |  |  |  |  |  |  |  |  |  |
| DESIGNED     |  |  |  |  |  |  |  |  |  | DATE                     |  |  |  |  |  |  |  |  |  |
|              |  |  |  |  |  |  |  |  |  | APR/04/07                |  |  |  |  |  |  |  |  |  |
| CHECKED      |  |  |  |  |  |  |  |  |  | SHEET                    |  |  |  |  |  |  |  |  |  |
| RWB          |  |  |  |  |  |  |  |  |  | 1                        |  |  |  |  |  |  |  |  |  |
| PROJECT NO.  |  |  |  |  |  |  |  |  |  | ISSUANCE NUMBER          |  |  |  |  |  |  |  |  |  |
| 3630-0100    |  |  |  |  |  |  |  |  |  | 36500100-P-M-0005        |  |  |  |  |  |  |  |  |  |
| REV          |  |  |  |  |  |  |  |  |  | 1                        |  |  |  |  |  |  |  |  |  |



|              |  |  |  |  |  |  |  |  |  |   |  |  |  |  |  |  |  |  |  |
|--------------|--|--|--|--|--|--|--|--|--|---|--|--|--|--|--|--|--|--|--|
| PROJECT NAME |  |  |  |  |  |  |  |  |  | MILNE INLET FUEL STORAGE                      |  |  |  |  |  |  |  |  |  |
| DRAWING NO.  |  |  |  |  |  |  |  |  |  | 36300100-P-M-0006                             |  |  |  |  |  |  |  |  |  |
| TITLE        |  |  |  |  |  |  |  |  |  | SEI INDUSTRIES                                |  |  |  |  |  |  |  |  |  |
| REVISIONS    |  |  |  |  |  |  |  |  |  | MILNE INLET FUEL STORAGE                      |  |  |  |  |  |  |  |  |  |
| REV          |  |  |  |  |  |  |  |  |  | DATE  |  |  |  |  |  |  |  |  |  |
| DESCRIPTION  |  |  |  |  |  |  |  |  |  | ISSUED FOR FINAL RECORD (AS BUILT INFO ADDED) |  |  |  |  |  |  |  |  |  |
| DRN          |  |  |  |  |  |  |  |  |  | CHK   |  |  |  |  |  |  |  |  |  |
| APR          |  |  |  |  |  |  |  |  |  | RMB   |  |  |  |  |  |  |  |  |  |
| REV          |  |  |  |  |  |  |  |  |  | DATE  |  |  |  |  |  |  |  |  |  |
| DESCRIPTION  |  |  |  |  |  |  |  |  |  | ISSUED FOR CONSTRUCTION                       |  |  |  |  |  |  |  |  |  |
| DRN          |  |  |  |  |  |  |  |  |  | CHK   |  |  |  |  |  |  |  |  |  |
| APR          |  |  |  |  |  |  |  |  |  | RMB   |  |  |  |  |  |  |  |  |  |
| REV          |  |  |  |  |  |  |  |  |  | DATE  |  |  |  |  |  |  |  |  |  |
| DESCRIPTION  |  |  |  |  |  |  |  |  |  | ISSUED FOR CLIENT REVIEW                      |  |  |  |  |  |  |  |  |  |
| DRN          |  |  |  |  |  |  |  |  |  | CHK   |  |  |  |  |  |  |  |  |  |
| APR          |  |  |  |  |  |  |  |  |  | RMB   |  |  |  |  |  |  |  |  |  |
| REV          |  |  |  |  |  |  |  |  |  | DATE  |  |  |  |  |  |  |  |  |  |
| DESCRIPTION  |  |  |  |  |  |  |  |  |  | ISSUED FOR CLIENT REVIEW                      |  |  |  |  |  |  |  |  |  |
| DRN          |  |  |  |  |  |  |  |  |  | CHK   |  |  |  |  |  |  |  |  |  |
| APR          |  |  |  |  |  |  |  |  |  | RMB   |  |  |  |  |  |  |  |  |  |
| REV          |  |  |  |  |  |  |  |  |  | DATE  |  |  |  |  |  |  |  |  |  |
| DESCRIPTION  |  |  |  |  |  |  |  |  |  | ISSUED FOR CLIENT REVIEW                      |  |  |  |  |  |  |  |  |  |
| DRN          |  |  |  |  |  |  |  |  |  | CHK   |  |  |  |  |  |  |  |  |  |
| APR          |  |  |  |  |  |  |  |  |  | RMB   |  |  |  |  |  |  |  |  |  |
| REV          |  |  |  |  |  |  |  |  |  | DATE  |  |  |  |  |  |  |  |  |  |
| DESCRIPTION  |  |  |  |  |  |  |  |  |  | ISSUED FOR CLIENT REVIEW                      |  |  |  |  |  |  |  |  |  |
| DRN          |  |  |  |  |  |  |  |  |  | CHK   |  |  |  |  |  |  |  |  |  |
| APR          |  |  |  |  |  |  |  |  |  | RMB   |  |  |  |  |  |  |  |  |  |
| REV          |  |  |  |  |  |  |  |  |  | DATE  |  |  |  |  |  |  |  |  |  |
| DESCRIPTION  |  |  |  |  |  |  |  |  |  | ISSUED FOR CLIENT REVIEW                      |  |  |  |  |  |  |  |  |  |
| DRN          |  |  |  |  |  |  |  |  |  | CHK   |  |  |  |  |  |  |  |  |  |
| APR          |  |  |  |  |  |  |  |  |  | RMB   |  |  |  |  |  |  |  |  |  |
| REV          |  |  |  |  |  |  |  |  |  | DATE  |  |  |  |  |  |  |  |  |  |
| DESCRIPTION  |  |  |  |  |  |  |  |  |  | ISSUED FOR CLIENT REVIEW                      |  |  |  |  |  |  |  |  |  |
| DRN          |  |  |  |  |  |  |  |  |  | CHK   |  |  |  |  |  |  |  |  |  |
| APR          |  |  |  |  |  |  |  |  |  | RMB   |  |  |  |  |  |  |  |  |  |
| REV          |  |  |  |  |  |  |  |  |  | DATE  |  |  |  |  |  |  |  |  |  |
| DESCRIPTION  |  |  |  |  |  |  |  |  |  | ISSUED FOR CLIENT REVIEW                      |  |  |  |  |  |  |  |  |  |
| DRN          |  |  |  |  |  |  |  |  |  | CHK   |  |  |  |  |  |  |  |  |  |
| APR          |  |  |  |  |  |  |  |  |  | RMB   |  |  |  |  |  |  |  |  |  |
| REV          |  |  |  |  |  |  |  |  |  | DATE  |  |  |  |  |  |  |  |  |  |
| DESCRIPTION  |  |  |  |  |  |  |  |  |  | ISSUED FOR CLIENT REVIEW                      |  |  |  |  |  |  |  |  |  |
| DRN          |  |  |  |  |  |  |  |  |  | CHK   |  |  |  |  |  |  |  |  |  |
| APR          |  |  |  |  |  |  |  |  |  | RMB   |  |  |  |  |  |  |  |  |  |
| REV          |  |  |  |  |  |  |  |  |  | DATE  |  |  |  |  |  |  |  |  |  |
| DESCRIPTION  |  |  |  |  |  |  |  |  |  | ISSUED FOR CLIENT REVIEW                      |  |  |  |  |  |  |  |  |  |
| DRN          |  |  |  |  |  |  |  |  |  | CHK   |  |  |  |  |  |  |  |  |  |
| APR          |  |  |  |  |  |  |  |  |  | RMB   |  |  |  |  |  |  |  |  |  |
| REV          |  |  |  |  |  |  |  |  |  | DATE  |  |  |  |  |  |  |  |  |  |
| DESCRIPTION  |  |  |  |  |  |  |  |  |  | ISSUED FOR CLIENT REVIEW                      |  |  |  |  |  |  |  |  |  |
| DRN          |  |  |  |  |  |  |  |  |  | CHK   |  |  |  |  |  |  |  |  |  |
| APR          |  |  |  |  |  |  |  |  |  | RMB   |  |  |  |  |  |  |  |  |  |
| REV          |  |  |  |  |  |  |  |  |  | DATE  |  |  |  |  |  |  |  |  |  |
| DESCRIPTION  |  |  |  |  |  |  |  |  |  | ISSUED FOR CLIENT REVIEW                      |  |  |  |  |  |  |  |  |  |
| DRN          |  |  |  |  |  |  |  |  |  | CHK   |  |  |  |  |  |  |  |  |  |
| APR          |  |  |  |  |  |  |  |  |  | RMB   |  |  |  |  |  |  |  |  |  |
| REV          |  |  |  |  |  |  |  |  |  | DATE  |  |  |  |  |  |  |  |  |  |
| DESCRIPTION  |  |  |  |  |  |  |  |  |  | ISSUED FOR CLIENT REVIEW                      |  |  |  |  |  |  |  |  |  |
| DRN          |  |  |  |  |  |  |  |  |  | CHK   |  |  |  |  |  |  |  |  |  |
| APR          |  |  |  |  |  |  |  |  |  | RMB   |  |  |  |  |  |  |  |  |  |
| REV          |  |  |  |  |  |  |  |  |  | DATE  |  |  |  |  |  |  |  |  |  |
| DESCRIPTION  |  |  |  |  |  |  |  |  |  | ISSUED FOR CLIENT REVIEW                      |  |  |  |  |  |  |  |  |  |
| DRN          |  |  |  |  |  |  |  |  |  | CHK   |  |  |  |  |  |  |  |  |  |
| APR          |  |  |  |  |  |  |  |  |  | RMB   |  |  |  |  |  |  |  |  |  |
| REV          |  |  |  |  |  |  |  |  |  | DATE  |  |  |  |  |  |  |  |  |  |
| DESCRIPTION  |  |  |  |  |  |  |  |  |  | ISSUED FOR CLIENT REVIEW                      |  |  |  |  |  |  |  |  |  |
| DRN          |  |  |  |  |  |  |  |  |  | CHK   |  |  |  |  |  |  |  |  |  |
| APR          |  |  |  |  |  |  |  |  |  | RMB   |  |  |  |  |  |  |  |  |  |
| REV          |  |  |  |  |  |  |  |  |  | DATE  |  |  |  |  |  |  |  |  |  |
| DESCRIPTION  |  |  |  |  |  |  |  |  |  | ISSUED FOR CLIENT REVIEW                      |  |  |  |  |  |  |  |  |  |
| DRN          |  |  |  |  |  |  |  |  |  | CHK   |  |  |  |  |  |  |  |  |  |
| APR          |  |  |  |  |  |  |  |  |  | RMB   |  |  |  |  |  |  |  |  |  |
| REV          |  |  |  |  |  |  |  |  |  | DATE  |  |  |  |  |  |  |  |  |  |
| DESCRIPTION  |  |  |  |  |  |  |  |  |  | ISSUED FOR CLIENT REVIEW                      |  |  |  |  |  |  |  |  |  |
| DRN          |  |  |  |  |  |  |  |  |  | CHK   |  |  |  |  |  |  |  |  |  |
| APR          |  |  |  |  |  |  |  |  |  | RMB   |  |  |  |  |  |  |  |  |  |
| REV          |  |  |  |  |  |  |  |  |  | DATE  |  |  |  |  |  |  |  |  |  |
| DESCRIPTION  |  |  |  |  |  |  |  |  |  | ISSUED FOR CLIENT REVIEW                      |  |  |  |  |  |  |  |  |  |
| DRN          |  |  |  |  |  |  |  |  |  | CHK   |  |  |  |  |  |  |  |  |  |
| APR          |  |  |  |  |  |  |  |  |  | RMB   |  |  |  |  |  |  |  |  |  |
| REV          |  |  |  |  |  |  |  |  |  | DATE  |  |  |  |  |  |  |  |  |  |
| DESCRIPTION  |  |  |  |  |  |  |  |  |  | ISSUED FOR CLIENT REVIEW                      |  |  |  |  |  |  |  |  |  |
| DRN          |  |  |  |  |  |  |  |  |  | CHK   |  |  |  |  |  |  |  |  |  |
| APR          |  |  |  |  |  |  |  |  |  | RMB   |  |  |  |  |  |  |  |  |  |
| REV          |  |  |  |  |  |  |  |  |  | DATE  |  |  |  |  |  |  |  |  |  |
| DESCRIPTION  |  |  |  |  |  |  |  |  |  | ISSUED FOR CLIENT REVIEW                      |  |  |  |  |  |  |  |  |  |
| DRN          |  |  |  |  |  |  |  |  |  | CHK   |  |  |  |  |  |  |  |  |  |
| APR          |  |  |  |  |  |  |  |  |  | RMB   |  |  |  |  |  |  |  |  |  |
| REV          |  |  |  |  |  |  |  |  |  | DATE  |  |  |  |  |  |  |  |  |  |
| DESCRIPTION  |  |  |  |  |  |  |  |  |  | ISSUED FOR CLIENT REVIEW                      |  |  |  |  |  |  |  |  |  |
| DRN          |  |  |  |  |  |  |  |  |  | CHK   |  |  |  |  |  |  |  |  |  |
| APR          |  |  |  |  |  |  |  |  |  | RMB   |  |  |  |  |  |  |  |  |  |
| REV          |  |  |  |  |  |  |  |  |  | DATE  |  |  |  |  |  |  |  |  |  |
| DESCRIPTION  |  |  |  |  |  |  |  |  |  | ISSUED FOR CLIENT REVIEW                      |  |  |  |  |  |  |  |  |  |
| DRN          |  |  |  |  |  |  |  |  |  | CHK   |  |  |  |  |  |  |  |  |  |
| APR          |  |  |  |  |  |  |  |  |  | RMB   |  |  |  |  |  |  |  |  |  |
| REV          |  |  |  |  |  |  |  |  |  | DATE  |  |  |  |  |  |  |  |  |  |
| DESCRIPTION  |  |  |  |  |  |  |  |  |  | ISSUED FOR CLIENT REVIEW                      |  |  |  |  |  |  |  |  |  |
| DRN          |  |  |  |  |  |  |  |  |  | CHK   |  |  |  |  |  |  |  |  |  |
| APR          |  |  |  |  |  |  |  |  |  | RMB   |  |  |  |  |  |  |  |  |  |
| REV          |  |  |  |  |  |  |  |  |  | DATE  |  |  |  |  |  |  |  |  |  |
| DESCRIPTION  |  |  |  |  |  |  |  |  |  | ISSUED FOR CLIENT REVIEW                      |  |  |  |  |  |  |  |  |  |
| DRN          |  |  |  |  |  |  |  |  |  | CHK   |  |  |  |  |  |  |  |  |  |
| APR          |  |  |  |  |  |  |  |  |  | RMB   |  |  |  |  |  |  |  |  |  |
| REV          |  |  |  |  |  |  |  |  |  | DATE  |  |  |  |  |  |  |  |  |  |
| DESCRIPTION  |  |  |  |  |  |  |  |  |  | ISSUED FOR CLIENT REVIEW                      |  |  |  |  |  |  |  |  |  |
| DRN          |  |  |  |  |  |  |  |  |  | CHK   |  |  |  |  |  |  |  |  |  |
| APR          |  |  |  |  |  |  |  |  |  | RMB   |  |  |  |  |  |  |  |  |  |
| REV          |  |  |  |  |  |  |  |  |  | DATE  |  |  |  |  |  |  |  |  |  |
| DESCRIPTION  |  |  |  |  |  |  |  |  |  | ISSUED FOR CLIENT REVIEW                      |  |  |  |  |  |  |  |  |  |
| DRN          |  |  |  |  |  |  |  |  |  | CHK   |  |  |  |  |  |  |  |  |  |
| APR          |  |  |  |  |  |  |  |  |  | RMB   |  |  |  |  |  |  |  |  |  |
| REV          |  |  |  |  |  |  |  |  |  | DATE  |  |  |  |  |  |  |  |  |  |
| DESCRIPTION  |  |  |  |  |  |  |  |  |  | ISSUED FOR CLIENT REVIEW                      |  |  |  |  |  |  |  |  |  |
| DRN          |  |  |  |  |  |  |  |  |  | CHK   |  |  |  |  |  |  |  |  |  |
| APR          |  |  |  |  |  |  |  |  |  | RMB   |  |  |  |  |  |  |  |  |  |
| REV          |  |  |  |  |  |  |  |  |  | DATE  |  |  |  |  |  |  |  |  |  |
| DESCRIPTION  |  |  |  |  |  |  |  |  |  | ISSUED FOR CLIENT REVIEW                      |  |  |  |  |  |  |  |  |  |
| DRN          |  |  |  |  |  |  |  |  |  | CHK   |  |  |  |  |  |  |  |  |  |
| APR          |  |  |  |  |  |  |  |  |  | RMB   |  |  |  |  |  |  |  |  |  |
| REV          |  |  |  |  |  |  |  |  |  | DATE  |  |  |  |  |  |  |  |  |  |
| DESCRIPTION  |  |  |  |  |  |  |  |  |  | ISSUED FOR CLIENT REVIEW                      |  |  |  |  |  |  |  |  |  |
| DRN          |  |  |  |  |  |  |  |  |  | CHK   |  |  |  |  |  |  |  |  |  |
| APR          |  |  |  |  |  |  |  |  |  | RMB   |  |  |  |  |  |  |  |  |  |
| REV          |  |  |  |  |  |  |  |  |  | DATE  |  |  |  |  |  |  |  |  |  |
| DESCRIPTION  |  |  |  |  |  |  |  |  |  | ISSUED FOR CLIENT REVIEW                      |  |  |  |  |  |  |  |  |  |
| DRN          |  |  |  |  |  |  |  |  |  | CHK   |  |  |  |  |  |  |  |  |  |
| APR          |  |  |  |  |  |  |  |  |  | RMB   |  |  |  |  |  |  |  |  |  |
| REV          |  |  |  |  |  |  |  |  |  | DATE  |  |  |  |  |  |  |  |  |  |
| DESCRIPTION  |  |  |  |  |  |  |  |  |  | ISSUED FOR CLIENT REVIEW                      |  |  |  |  |  |  |  |  |  |
| DRN          |  |  |  |  |  |  |  |  |  | CHK   |  |  |  |  |  |  |  |  |  |
| APR          |  |  |  |  |  |  |  |  |  | RMB   |  |  |  |  |  |  |  |  |  |

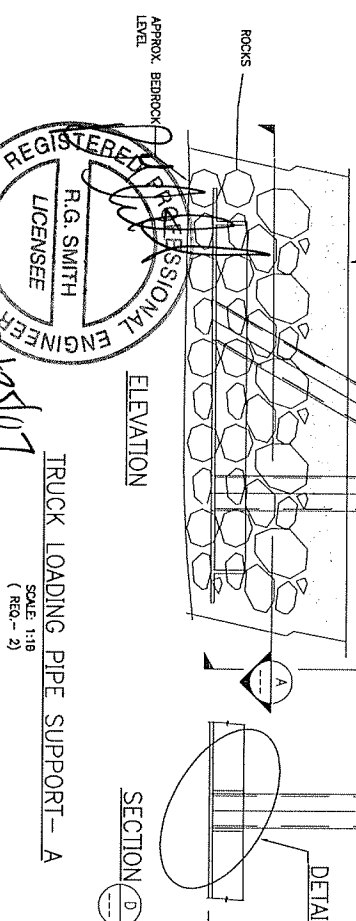
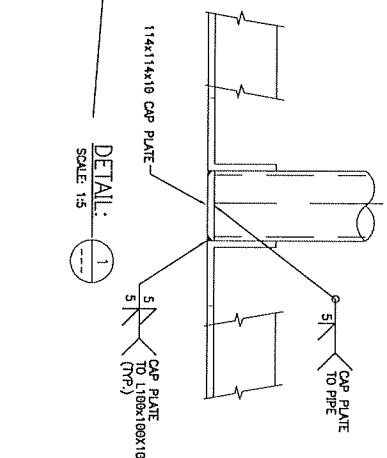
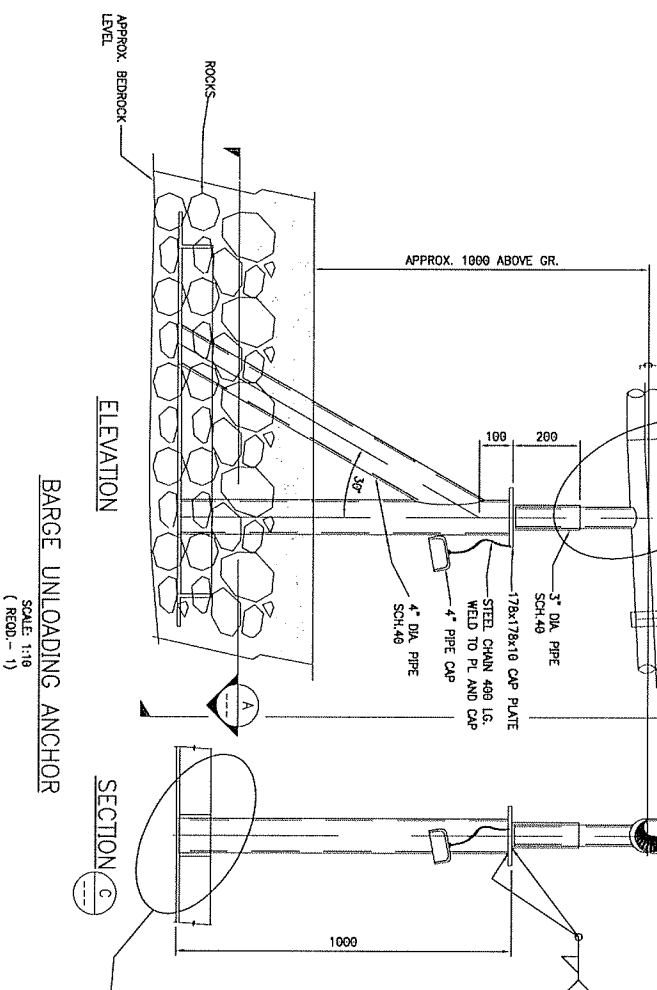
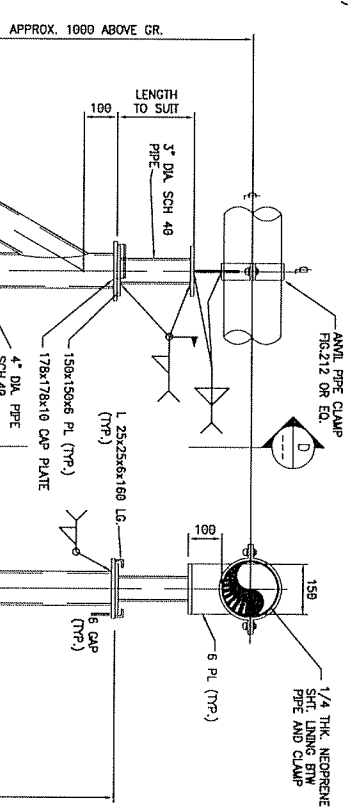
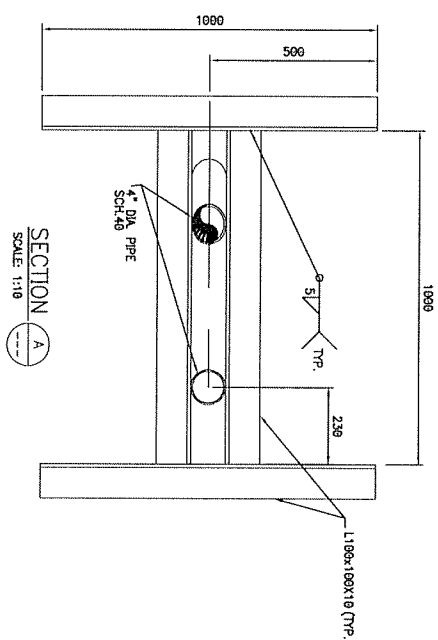
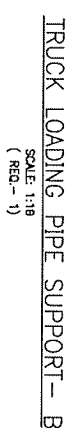
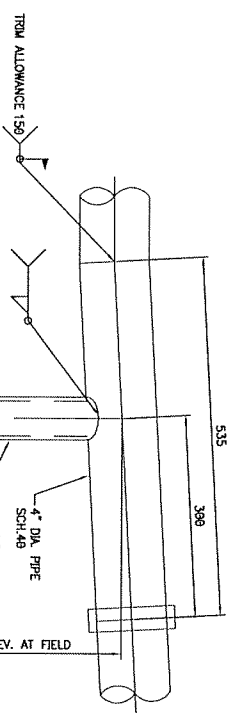
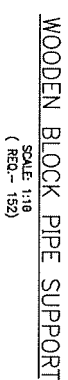
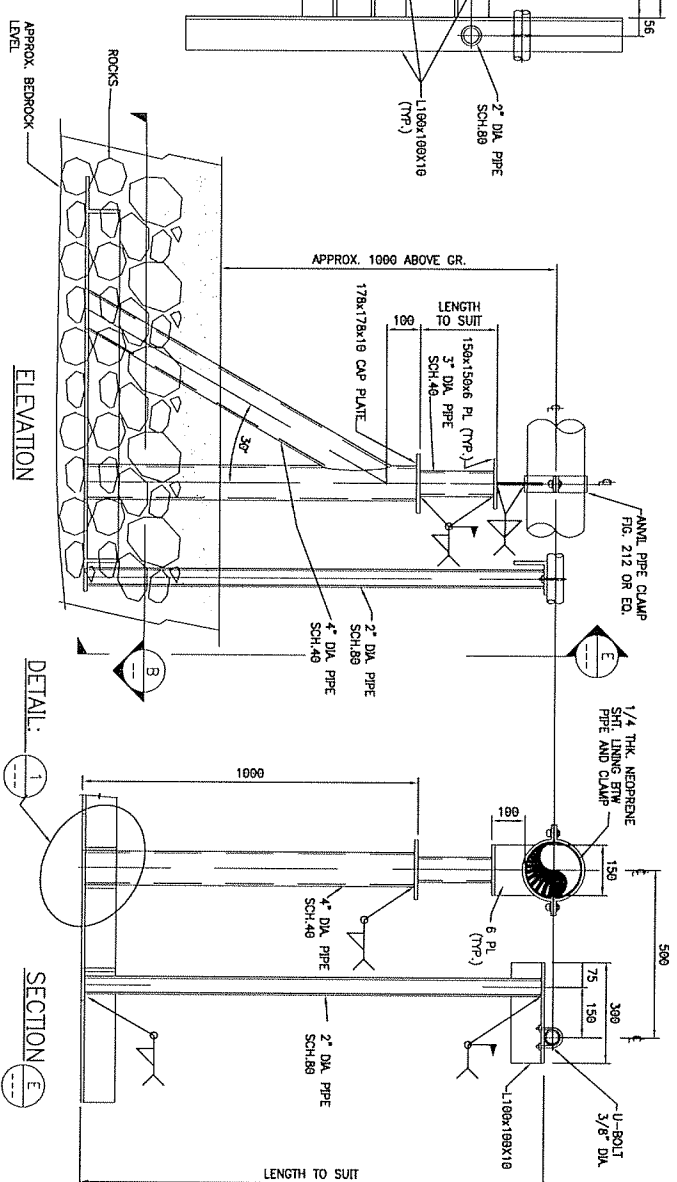
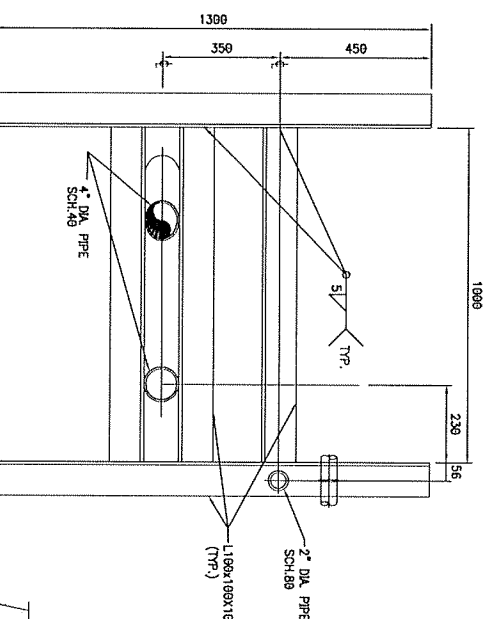
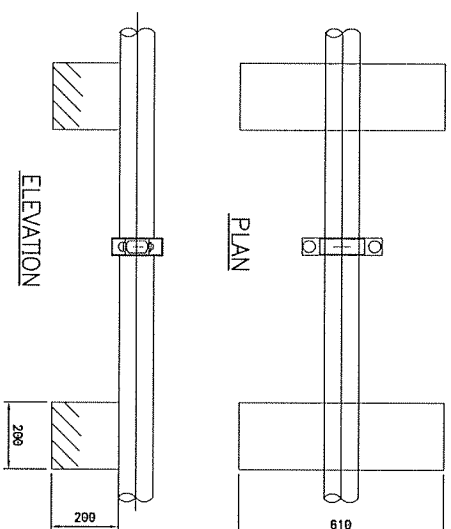
NOTE  
1.) PIPE LINE  $\phi$  TO BE APPROX.  
1 METER ABOVE GRADE.

EL 1000  
ABOVE GR.  
N PLUG

REGISTERED PROFESSIONAL ENGINEER  
R.G. SMITH  
LICENSEE

1000-01-008





TRUCK LOADING PIPE SUPPORT- A

|  |  |  |  |  |  |  |  |  |  |
|--|--|--|--|--|--|--|--|--|--|
| <div style="display: flex; justify-content: space-between;"> <div> <p>PROJECT NAME</p> <p>MILNE INLET FUEL STORAGE</p> </div> <div> <p>SEI INDUSTRIES</p> <p>MILNE INLET FUEL STORAGE</p> <p>PIPE SUPPORT DETAILS</p> </div> <div> <p>SCALE</p> <p>AS SHOWN</p> <p>DATE</p> <p>APR/30/07</p> <p>SHEET</p> <p>1</p> </div> </div> |  |  |  |  |  |  |  |  |  |
| <div style="display: flex; justify-content: space-between;"> <div> <p>DRAWN</p> <p>OMS</p> <p>DESIGNED</p> <p>CHECKED</p> <p>RWB</p> </div> <div> <p>PROJECT NO</p> <p>36500-0100</p> </div> <div> <p>DRAWING NUMBER</p> <p>36500100-P-M-0007</p> </div> </div>  |  |  |  |  |  |  |  |  |  |
| <div style="display: flex; justify-content: space-between;"> <div> <p>APPROVED</p> <p>RWB</p> </div> <div> <p>PROJECT NO</p> <p>36500-0100</p> </div> <div> <p>DRAWING NUMBER</p> <p>36500100-P-M-0007</p> </div> </div>   |  |  |  |  |  |  |  |  |  |
| <div style="display: flex; justify-content: space-between;"> <div> <p>REV</p> <p>0</p> </div> <div> <p>DATE</p> <p>APR/30/07</p> </div> <div> <p>SHEET</p> <p>1</p> </div> </div>  |  |  |  |  |  |  |  |  |  |

# **Layfield Environmental Systems Ltd.**

**Project Completion QA/QC Package  
for**

## **Raymac Environmental Services Inc.**

### **Baffinland Fuel Farms**

**Mary River, and Milne Inlet, Nu**

**Supply and Install of Hazgard 500 and LP 16 Geotextile**

Prepared By: Jesse Langmo

Reviewed By: Fred Cross

Date Submitted: November 28, 2007



# **Layfield Environmental Systems Ltd.**

## **Table of Contents**

**for**

### **Raymac Environmental Services Inc.**

#### **Install of Haz 500 and LP 16 Geotextile**

##### **Baffin Island, Nu**

##### **Milne Inlet**

|   |        |
|---|--------|
| 1) Certificate of Acceptance of Soil Subgrade Surface | 1 pg.  |
| 2) Certificate of Final Inspection and Acceptance     | 1 pg.  |
| 3) Hazgard 500 As-Built Drawing                       | 1 pg.  |
| 4) Geosynthetics Inventory Log                        | 1 pg.  |
| 5) Geomembrane Trial Seam Log                         | 1 pg.  |
| 6) Geomembrane Seam Log                               | 4 pgs. |
| 7) Geomembrane Vacuum / Air Lance Test Log            | 2 pgs. |
| 8) Geomembrane Defect/Repair Log                      | 1 pg.  |
| 9) Hazgard 500 Shop QC and Mill Certificates          | 7 pgs. |
| 10) Installation Warranty                             | 2 pgs. |

##### **Mary River**

|   |        |
|---|--------|
| 1) Certificate of Acceptance of Soil Subgrade Surface | 1 pg.  |
| 2) Certificate of Final Inspection and Acceptance     | 1 pg.  |
| 3) Hazgard 500 As-Built Drawing                       | 1 pg.  |
| 4) Geosynthetics Inventory Log                        | 1 pg.  |
| 5) Geomembrane Trial Seam Log                         | 1 pg.  |
| 6) Geomembrane Seam Log                               | 4 pgs. |
| 7) Geomembrane Vacuum / Air Lance Test Log            | 1 pg.  |
| 8) Geomembrane Defect/Repair Log                      | 1 pg.  |



## CERTIFICATE OF ACCEPTANCE OF SOIL SUBGRADE SURFACE

PROJECT NAME: Fuel Farm  
PROJECT NUMBER: 07C-015  
OWNER: Baffinlands  
LOCATION: Milne Inlet

I, the undersigned, a duly appointed representative of Layfield Environmental Systems Ltd. (LESL), have visually observed the soil subgrade described below, and found it to be an acceptable surface on which to install geomembrane.

This certification is based on observations of the surface of the subgrade only. No subterranean inspections or tests have been performed by Layfield Environmental Systems, and LESL makes no representations or warranties regarding conditions which may exist below the surface of the subgrade. Layfield Environmental Systems accepts no responsibility for conformance of the subgrade to this project's specifications.

The soil subgrade accepted on this date refers to its present condition. Any changes in the subgrade condition that result from the effects of inclement weather and/or other forces beyond the control of Layfield Environmental Systems and remedial work to correct the resulting deficiencies, will be the direct responsibility of the General Contractor.

Area Being Accepted: Area under panels A-1 to A-18, panels  
B1 to B4, well compacted surface, some rock.  
Used LP-16 as an underlay

### LAYFIELD ENVIRONMENTAL SYSTEMS REPRESENTATIVE:

Date: August 18, 2007  
Signature: [Signature]  
Name: Allen McKinnon  
Title: Project Supervisor

### OWNERS REPRESENTATIVE:

Date: Aug 20/07  
Signature: [Signature]  
Name: Jeff Bush  
Title: Mine Manager  
Company: Baffinland Iron Mines

## CERTIFICATE OF FINAL INSPECTION AND ACCEPTANCE

PROJECT NAME: Fuel Farm  
PROJECT NUMBER: 87C-015 DATE: August 19, 2007  
OWNER: Baffinlands  
LOCATION: Milne Inlet

Scope of Installation(s): **THE WORK**

Installed, welded, repaired, tested approx 15,916 m<sup>2</sup>  
of Hazard 500. Installed approx 346,000 sq. ft. of  
LP-16 as an underlay & overlay. Installed 1 sump  
@ toe.

### Part 1 - LAYFIELD ENVIRONMENTAL SYSTEMS LTD.

I, Allan McKinnon, a duly appointed representative of Layfield Environmental Systems Ltd. (LESL), have visually observed the installations (as outlined above), and have found the Work to be complete and free of defects and declare that the Work was completed in accordance with the project specifications, Layfield Environmental Systems' QC program and the terms and conditions of the contract.

#### Layfield Environmental Systems Representative:

Name: Allan McKinnon  
Title: Project Supervisor  
Date: August 19, 2007 Signature: [Signature]

### Part 2 - OWNER (or Representative)

I, Jeff Buoh, a duly appointed representative of Baffinland Iron Mines, do hereby take over and accept the installation(s) described above, and confirm that the work has been completed in accordance with the project specifications and the terms of the conditions of the contract.

I have evaluated and measured the work together with the Layfield Environmental Systems representative, and agree that the measurements shown are both true and correct, and that the installation has met our approval.

#### Owners Representative:

Name: Jeff Buoh  
Title: Mine Manager  
Company: Baffinland Iron Mines  
Date: Aug 20/07 Signature: [Signature]

Comments: \_\_\_\_\_  
\_\_\_\_\_  
\_\_\_\_\_



1. NORTH ARROW ? \_\_\_\_\_
2. REPAIR NUMBERS & LOCATIONS ? \_\_\_\_\_
3. SITE DIMENSIONS ? \_\_\_\_\_
4. SLOPE LENGTHS ? \_\_\_\_\_
5. TITLE BLOCKS COMPLETED ? \_\_\_\_\_
6. CERT. OF SUBGRADE ACCEPTANCE ? \_\_\_\_\_
7. CERT. OF FINAL ACCEPTANCE ? \_\_\_\_\_

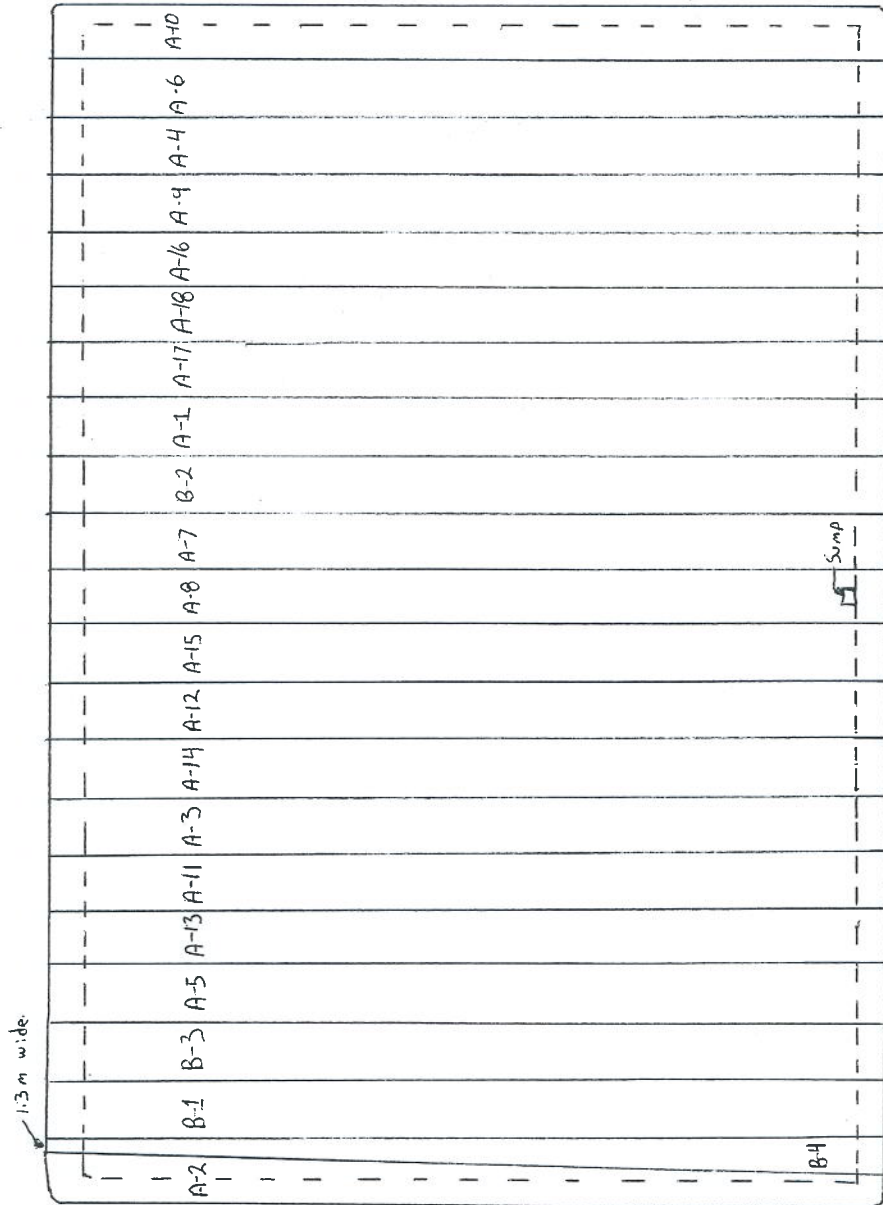
1) SEAM NUMBERS SHOWN ON TESTING LOG SHEETS REPRESENT THE ADJACENT PANEL NUMBERS.

——— CHANGE IN GRADE  
 ——— LINER FIELD SEAM  
 ——— ANCHOR TRENCH  
 P 3 PANEL NUMBER  
 ⊗ PIPE PENETRATION  
 R 2 REPAIR NUMBER  
 Δ PATCH  
 XXX EXTRUSION BEAD (OR WELD)



Raymac  
Baffinlands  
Wilne Inlet  
Fuel Farm  
Hazgard 5000

|                     |             |
|---------------------|-------------|
| SCALE: N.T.S.       | PROJECT No. |
| DWG: 1 OF 1         | 07C-015     |
| DWN: JPM            | APPD:       |
| DATE: Sept. 9, 2007 |             |



Note: All A panels 12.2 m wide  
B1 B2 & B3 8.7 m wide.

23.6m wide

## GEOSYNTHETICS INVENTORY LOG

PROJECT NUMBER: 07C-015

PROJECT TITLE: Fuel Farm

OWNER: Boffinlands

CONTRACTOR: \_\_\_\_\_

LOCATION: Milne Inlet

SHEET NUMBER: 1071

MATERIAL TYPE: GEOMEMBRANE

GEONET GEOTEXTILE OTHER

DATE OF ARRIVAL: \_\_\_\_\_

DATE OF INVENTORY: August 10, 2007

UNLOADING METHOD:

INVENTORY BY: ASm & A.G.

PRODUCT TYPE: LP162 Hazgod 500 CONDITION IN TRUCK:

MATERIAL MANUFACTURER:

[illegible]

SUBMITTED BY: Asim

DATE: August 10, 2007



PROJECT NUMBER: 07c-015

OWNER: Baffinlands

LOCATION: Milne Inlet

PROJECT TITLE: Fuel Farm.

**CONTRACTOR:** \_\_\_\_\_

SHEET NUMBER: 1 of 1

TX - # = EXTRUSION

TS - # = SOLVENT

[illegible]

SUBMITTED BY: A.S.M.  
DATE: Sep 1, 2007

LAYFIELD ENVIRONMENTAL SYSTEMS

LS FORM 3





# GEOMEMBRANE SEAM LOG

PROJECT NUMBER: 07C-015

OWNER: Baffinlands

LOCATION: Milne Inlet

PROJECT TITLE: Fuel Farm

CONTACTOR: \_\_\_\_\_

## PASSING TRIAL SEAMS

✓ FUSION

\_\_\_\_\_  
EXTRUSION

\_\_\_\_\_  
SOLVENT

| NO.  | TIME | TECH ID |
|------|------|---------|
| TF-1 | 1605 | A.G.    |
|      |      |         |
|      |      |         |
|      |      |         |

SHEET NUMBER: 1094

DATE: August 14, 2007

| SEAM NUMBER | SEAM SECTION *<br>START POINT | FINISH POINT | APPROX. START TIME | AMB. AIR TEMP. | WELD TECH. | PREHEAT OR MACH. SPEED | MACHINE TEMPERATURES           |                                | APPROX. LENGTH WELDED | DESTR. NUMBER | CHK'D BY | REMARKS | NON-DESTRUCTIVE |            |
|-------------|-------------------------------|--------------|--------------------|----------------|------------|------------------------|--------------------------------|--------------------------------|-----------------------|---------------|----------|---------|-----------------|------------|
|             |                               |              |                    |                |            |                        | DIGITAL SET<br>WEDGE OR BARREL | DIGITAL SET<br>WEDGE OR BARREL |                       |               |          |         | TEST DATE       | CHECKED BY |
| A10/A6      | NEOS                          | -SEOS        | 1915               | +8°            | A.G.       | 60%                    | 420°                           | -                              | 61.87m                |               | AM       |         | Aug. 14         | A.M.       |
| A6/A4       | NEOS                          | -SEOS        | 1845               | +8°            | A.G.       | 60%                    | 420°                           | -                              | 61.26m                |               | AM       |         | Aug. 14         | A.M.       |
| A4/A9       | NEOS                          | -SEOS        | 1720               | +9°            | A.G.       | 60%                    | 420°                           | -                              | 61.57m                |               | AM       |         | Aug. 14         | A.M.       |
| A9/A16      | NEOS                          | -SEOS        | 1655               | +9°            | A.G.       | 60%                    | 420°                           | -                              | 61.25m                |               | AM       |         | Aug. 14         | A.M.       |
| A16/A-18    | NEOS                          | -SEOS        | 1630               | +9°            | A.G.       | 60%                    | 420°                           | -                              | 61.26m                |               | AM       |         | Aug. 14         | A.M.       |
| /           | -                             | -            |                    |                |            |                        | -                              | -                              |                       |               |          |         |                 |            |
| /           | -                             | -            |                    |                |            |                        | -                              | -                              |                       |               |          |         |                 |            |
| /           | -                             | -            |                    |                |            |                        | -                              | -                              |                       |               |          |         |                 |            |
| /           | -                             | -            |                    |                |            |                        | -                              | -                              |                       |               |          |         |                 |            |
| /           | -                             | -            |                    |                |            |                        | -                              | -                              |                       |               |          |         |                 |            |
| /           | -                             | -            |                    |                |            |                        | -                              | -                              |                       |               |          |         |                 |            |
| DAILY TOTAL |                               |              |                    |                |            |                        |                                |                                | 307.21m               |               |          |         |                 |            |

\* REFERENCE SEAM ENDPOINTS FROM AN END OF SEAM (EOS), A REPAIR, OR A POINT LOCATION ON THE SEAM.

SUBMITTED BY: A.S.M

DATE: Sept 11, 2007



# GEOMEMBRANE SEAM LOG

PROJECT NUMBER: 07C-015 PROJECT TITLE: Fuel Farm  
OWNER: Baffinlands CONTACTOR: \_\_\_\_\_  
LOCATION: Milne Inlet

## PASSING TRIAL SEAMS

|  | NO.  | TIME | TECH ID |
|--|------|------|---------|
|  |      |      |         |
| <input checked="" type="checkbox"/> FUSION | TF-2 | 1045 | A.G.    |
| <input type="checkbox"/> EXTRUSION         |      |      |         |
| <input type="checkbox"/> SOLVENT           |      |      |         |

SHEET NUMBER: 2894  
DATE: August 15, 2007

| SEAM NUMBER | SEAM SECTION *<br>START POINT | FINISH POINT | APPROX. START TIME | AMB. AIR TEMP. | WELD TECH. | PREHEAT OR MACH. SPEED | MACHINE TEMPERATURES           |                                | APPROX. LENGTH WELDED | DESTR. NUMBER | CHK'D BY | REMARKS | NON-DESTRUCTIVE |            |
|-------------|-------------------------------|--------------|--------------------|----------------|------------|------------------------|--------------------------------|--------------------------------|-----------------------|---------------|----------|---------|-----------------|------------|
|             |                               |              |                    |                |            |                        | DIGITAL SET<br>WEDGE OR BARREL | DIGITAL SET<br>WEDGE OR BARREL |                       |               |          |         | TEST DATE       | CHECKED BY |
| A15/A8      | SEOS                          | -NEOS        | 1415               | +6°            | AG         | 60%                    | 420°                           | -                              | 64.9m                 |               | AM       |         | Aug. 15         | AM         |
| A8/A7       | NEOS                          | SEOS         | 1350               | +6°            | AG         | 60%                    | 420°                           | -                              | 63.7m                 |               | AM       |         | Aug. 15         | AM         |
| A7/B2       | NEOS                          | SEOS         | 1320               | +6°            | A.G.       | 60%                    | 420°                           | -                              | 63m                   |               | AM       |         | Aug. 15         | AM         |
| B2/A1       | NEOS                          | -SEOS        | 1251               | +6°            | AG         | 60%                    | 420°                           | -                              | 62.48m                |               | A.M.     |         | Aug. 15         | AM         |
| A1/A17      | NEOS                          | -SEOS        | 1229               | +6°            | AG         | 60%                    | 420°                           | -                              | 61.57m                |               | A.M.     |         | Aug. 15         | AM         |
| A17/A18     | NEOS                          | -SEOS        | 1100               | +6°            | AG         | 60%                    | 420°                           | -                              | 60.66m                |               | AM       |         | Aug. 15         | AM         |
| /           | -                             | -            |                    |                |            |                        | -                              | -                              |                       |               |          |         |                 |            |
| /           | -                             | -            |                    |                |            |                        | -                              | -                              |                       |               |          |         |                 |            |
| /           | -                             | -            |                    |                |            |                        | -                              | -                              |                       |               |          |         |                 |            |
| /           | -                             | -            |                    |                |            |                        | -                              | -                              |                       |               |          |         |                 |            |
| /           | -                             | -            |                    |                |            |                        | -                              | -                              |                       |               |          |         |                 |            |
| DAILY TOTAL |                               |              |                    |                |            |                        |                                |                                | 3763m                 |               |          |         |                 |            |

\* REFERENCE SEAM ENDPOINTS FROM AN END OF SEAM (EOS), A REPAIR, OR A POINT LOCATION ON THE SEAM.

SUBMITTED BY: ASm  
DATE: August 16, 2007



# GEOMEMBRANE SEAM LOG

PROJECT NUMBER: 07C-015 PROJECT TITLE: Fuel Farm  
OWNER: Baffinlands CONTACTOR: \_\_\_\_\_  
LOCATION: Milne Inlet

## PASSING TRIAL SEAMS

|  | NO.  | TIME |         | TECH ID |
|--|------|------|---------|---------|
|  |      | TIME | TECH ID |         |
| <input checked="" type="checkbox"/> FUSION | TF-3 | 1215 | AG      |         |
| <input type="checkbox"/> EXTRUSION         |      |      |         |         |
| <input type="checkbox"/> SOLVENT           |      |      |         |         |

SHEET NUMBER: 3 of 4  
DATE: August 16, 2007

| SEAM NUMBER | SEAM SECTION *<br>START POINT FINISH POINT | APPROX. START TIME | AMB. AIR TEMP. | WELD TECH. | PREHEAT OR MACH. SPEED | MACHINE TEMPERATURES           |                                | APPROX. LENGTH WELDED | DESTR. NUMBER | CHK'D BY | REMARKS | NON-DESTRUCTIVE |            |
|-------------|--|--------------------|----------------|------------|------------------------|--------------------------------|--------------------------------|-----------------------|---------------|----------|---------|-----------------|------------|
|             |  |                    |                |            |                        | DIGITAL SET<br>WEDGE OR BARREL | DIGITAL SET<br>WEDGE OR BARREL |                       |               |          |         | TEST DATE       | CHECKED BY |
| A15/A12     | SEOS - NEOS                                | 1232               | +90            | AG         | 60%                    | 420°                           | -                              | 63.1 m                |               | AM       |         | Aug. 16         | AM         |
| A12/A14     | SEOS - NEOS                                | 1300               | +90            | AG         | 60%                    | 420°                           | -                              | 62.18 m               |               | AM       |         | Aug. 16         | AM         |
| A14/A13     | SEOS - NEOS                                | 1325               | +90            | AG         | 60%                    | 420°                           | -                              | 62.79 m               |               | AM       |         | Aug. 16         | AM         |
| A3/A11      | SEOS - NEOS                                | 1400               | +10°C          | AG         | 60%                    | 420°                           | -                              | 63.4 m                |               | AM       |         | Aug. 16         | AM         |
| A11/A13     | SEOS - NEOS                                | 1432               | +10°C          | AG         | 60%                    | 420°                           | -                              | 63.4 m                |               | AM       |         | Aug. 16         | AM         |
| A13/A5      | SEOS - NEOS                                | 1535               | +10°C          | AG         | 60%                    | 420°                           | -                              | 63.7 m                |               | AM       |         | Aug. 16         | AM         |
| /           | -  |                    |                |            |                        | -                              | -                              |                       |               |          |         |                 |            |
| /           | -  |                    |                |            |                        | -                              | -                              |                       |               |          |         |                 |            |
| /           | -  |                    |                |            |                        | -                              | -                              |                       |               |          |         |                 |            |
| /           | -  |                    |                |            |                        | -                              | -                              |                       |               |          |         |                 |            |
| /           | -  |                    |                |            |                        | -                              | -                              |                       |               |          |         |                 |            |

DAILY TOTAL 378.57m

\* REFERENCE SEAM ENDPOINTS FROM AN END OF SEAM (EOS), A REPAIR, OR A POINT LOCATION ON THE SEAM.

SUBMITTED BY: AM  
DATE: Aug. 16, 2007

LAYFIELD ENVIRONMENTAL SYSTEMS





# GEOMEMBRANE SEAM LOG

PROJECT NUMBER: 07C-015 PROJECT TITLE: Fuel Farm  
OWNER: Baffinlands CONTACTOR: \_\_\_\_\_  
LOCATION: Milne Inlet

## PASSING TRIAL SEAMS

| NO.  | TIME | TECH ID |
|------|------|---------|
| TF-4 | 0930 | AG      |
|      |      |         |
|      |      |         |

SHEET NUMBER: 40f4  
DATE: Aug. 17, 2007

☒ FUSION  
☐ EXTRUSION  
☐ SOLVENT

| SEAM NUMBER | SEAM SECTION *<br>START POINT | FINISH POINT | APPROX. START TIME | AMB. AIR TEMP. | WELD TECH. | PREHEAT OR MACH. SPEED | MACHINE TEMPERATURES           |                                | APPROX. LENGTH WELDED | DESTR. NUMBER | CHK'D BY | REMARKS | NON-DESTRUCTIVE |            |
|-------------|-------------------------------|--------------|--------------------|----------------|------------|------------------------|--------------------------------|--------------------------------|-----------------------|---------------|----------|---------|-----------------|------------|
|             |                               |              |                    |                |            |                        | DIGITAL SET<br>WEDGE OR BARREL | DIGITAL SET<br>WEDGE OR BARREL |                       |               |          |         | TEST DATE       | CHECKED BY |
| A5/B3       | SEOS                          | -NEOS        | 0940               | +8°C           | AG         | 60%                    | 420°                           | -                              | 63.7m                 |               | Am       |         | Aug 17          | Am         |
| B3/B1       | SEOS                          | -NEOS        | 1015               | +8°C           | AG         | 60%                    | 420°                           | -                              | 62.9m                 |               | Am       |         | Aug 17          | Am         |
| B1/B4       | SEOS                          | -NEOS        | 1255               | +9°C           | AG         | 60%                    | 420°                           | -                              | 63.9m                 |               | Am       |         | Aug 17          | Am         |
| B4/A2       | SEOS                          | -NEOS        | 1045               | +8°C           | AG         | 60%                    | 420°                           | -                              | 63.8m                 |               | Am       |         | Aug 17          | Am         |
| /           | -                             | -            |                    |                |            |                        | -                              | -                              |                       |               |          |         |                 |            |
| /           | -                             | -            |                    |                |            |                        | -                              | -                              |                       |               |          |         |                 |            |
| /           | -                             | -            |                    |                |            |                        | -                              | -                              |                       |               |          |         |                 |            |
| /           | -                             | -            |                    |                |            |                        | -                              | -                              |                       |               |          |         |                 |            |
| /           | -                             | -            |                    |                |            |                        | -                              | -                              |                       |               |          |         |                 |            |
| /           | -                             | -            |                    |                |            |                        | -                              | -                              |                       |               |          |         |                 |            |
| /           | -                             | -            |                    |                |            |                        | -                              | -                              |                       |               |          |         |                 |            |
| DAILY TOTAL |                               |              |                    |                |            |                        |                                |                                | 2543m                 |               |          |         |                 |            |

\* REFERENCE SEAM ENDPOINTS FROM AN END OF SEAM (EOS), A REPAIR, OR A POINT LOCATION ON THE SEAM.

SUBMITTED BY: Sept. 1, 2007  
DATE: ASm



# LAYFIELD GEOMEMBRANE VACUUM / AIR LANCE TEST LOG

PROJECT NUMBER: 07C-015 PROJECT TITLE: Fuel Farm  
OWNER: Baffinlands CONTRACTOR: \_\_\_\_\_  
LOCATION: Midline Inlet DATE: Aug 14-17, 2007

VACUUM BOX \_\_\_\_\_

AIR LANCE ☒

SHEET NUMBER: 1 of 2

| SEAMS          |                           |              |            |               |                                     |             |               |                |              | REPAIRS    |               |             |               |  |
|----------------|---------------------------|--------------|------------|---------------|-------------------------------------|-------------|---------------|----------------|--------------|------------|---------------|-------------|---------------|--|
| SEAM<br>NUMBER | SEAM SECTION *<br>FROM TO | TEST<br>DATE | TECH<br>ID | DEFECTS<br>** | SEAM<br>COMPLETE<br>NO YES          | CHK'D<br>BY | REMARKS<br>** | DEFECT<br>CODE | TEST<br>DATE | TECH<br>ID | DEFECTS<br>** | CHK'D<br>BY | REMARKS<br>** |  |
| A10-A6         | NEOS - SEOS               | 8-14         | AM         |               | <input checked="" type="checkbox"/> | AM          |               | 1A             | 8-14         | AM         |               | AM          |               |  |
| A6-A4          | SEOS - NEOS               | 8-14         | AM         |               | <input checked="" type="checkbox"/> | AM          |               | 1B             | 8-14         | AM         |               | AM          |               |  |
| A4-A9          | NEOS - SEOS               | 8-14         | AM         |               | <input checked="" type="checkbox"/> | AM          |               | 1C             | 8-15         | AM         |               | AM          |               |  |
| A9-A16         | NEOS - SEOS               | 8-14         | AM         |               | <input checked="" type="checkbox"/> | AM          |               | 1D             | 8-15         | AM         |               | AM          |               |  |
| A16-A18        | SEOS - NEOS               | 8-14         | AM         |               | <input checked="" type="checkbox"/> | AM          |               | 1E             | 8-15         | AG         |               | AM          |               |  |
| A15-A8         | NEOS - SEOS               | 8-15         | AM         |               | <input checked="" type="checkbox"/> | AM          |               | 1F             | 8-15         | AG         |               | AM          |               |  |
| A8-A7          | NEOS - SEOS               | 8-15         | AM         |               | <input checked="" type="checkbox"/> | AM          |               | 1G             | 8-16         | AM         |               | AM          |               |  |
| A7-B2          | SEOS - NEOS               | 8-15         | AM         |               | <input checked="" type="checkbox"/> | AM          |               | 1H             | 8-16         | AM         |               | AM          |               |  |
| B2-A1          | NEOS - SEOS               | 8-15         | AM         |               | <input checked="" type="checkbox"/> | AM          |               | 1I             | 8-17         | AM         |               | AM          |               |  |
| A1-A17         | NEOS - SEOS               | 8-15         | AM         |               | <input checked="" type="checkbox"/> | AM          |               |                |              |            |               |             |               |  |
| A17-A18        | SEOS - NEOS               | 8-15         | AM         |               | <input checked="" type="checkbox"/> | AM          |               |                |              |            |               |             |               |  |
| A15-A12        | SEOS - NEOS               | 8-16         | AM         |               | <input checked="" type="checkbox"/> | AM          |               |                |              |            |               |             |               |  |
| A12-A14        | SEOS - NEOS               | 8-16         | AM         |               | <input checked="" type="checkbox"/> | AM          |               |                |              |            |               |             |               |  |
| A14-A3         | SEOS - NEOS               | 8-16         | AM         |               | <input checked="" type="checkbox"/> | AM          |               |                |              |            |               |             |               |  |
| A3-A11         | SEOS - NEOS               | 8-16         | AM         |               | <input checked="" type="checkbox"/> | AM          |               |                |              |            |               |             |               |  |
| A11-A13        | SEOS - NEOS               | 8-16         | AM         |               | <input checked="" type="checkbox"/> | AM          |               |                |              |            |               |             |               |  |
| A13-A5         | SEOS - NEOS               | 8-16         | AM         |               | <input checked="" type="checkbox"/> | AM          |               |                |              |            |               |             |               |  |
| A5-B3          | SEOS - NEOS               | 8-17         | AM         |               | <input checked="" type="checkbox"/> | AM          |               |                |              |            |               |             |               |  |
| B3-B1          | NEOS - SEOS               | 8-17         | AM         |               | <input checked="" type="checkbox"/> | AM          |               |                |              |            |               |             |               |  |
| B1-B4          | SEOS - NEOS               | 8-17         | AM         |               | <input checked="" type="checkbox"/> | AM          |               |                |              |            |               |             |               |  |

\* REFERENCE SEAM ENDPOINTS FROM AN END OF SEAM (EOS), A REPAIR NUMBER, OR A POINT LOCATION ON THE SEAM

\*\* RECORD QUANTITY OF LEAKS DETECTED AND REFERENCE NEW DEFECT CODE IN REMARKS



**LAYFIELD**

PROJECT NUMBER: 07C-015

PROJECT TITLE: Fuel Form

OWNER: Baffinlands

**CONTRACTOR:**

LOCATION: Milne Inlet

DATE: August 17, 2007

## VACUUM BOX

**AIR LANCE** ✓

**SHEET NUMBER:** 2042

[illegible]

\* REFERENCE SEAM ENDPOINTS FROM AN END OF SEAM (EOS), A REPAIR NUMBER, OR A POINT LOCATION ON THE SEAM

\*\*\* RECORD QUANTITY OF LEAKS DETECTED AND REFERENCE NEW DEFECT CODE IN REMARKS

SUBMITTED BY: ASm  
DATE: Aug. 18, 2007

LAYFIELD ENVIRONMENTAL SYSTEMS





**LAYFIELD**

PROJECT TITLE: Fuel Farm

**CONTRACTOR:**

**SHEET NUMBER:** 10 of 1

|                                      |   |   |                                |
|--------------------------------------|---|---|--------------------------------|
| <b>DEFECT TYPE:</b>                  | AD - ANIMAL RELATED DAMAGE              | EE - EARTHWORK EQUIPMENT DAMAGE         | P1 - PRESSURE TEST CUT         |
| B - UNDISPERSED RESIN BEAD           | EXT - EXTENSION                         | FM - FISHMOUTH                          | SI - SOIL SURFACE IRREGULARITY |
| BO - FUSION WELDER BURN              | FS - FAILED SEAM LENGTH                 | FTS - FIELD TEST STRIP                  | SL - SLAG ON TEXTURED SHEET    |
| BS - BOOT/SKIRT FROM FML PENETRATION | HT - HEAT TACK BURN                     | ID - INSUFFICIENT OVERLAP (UNDER SPEC.) | T - THREE PANEL INTERSECTION   |
| CO - CHANGE OF OVERLAP               | IO - INSUFFICIENT OVERLAP (UNDER SPEC.) | MD - MANUFACTURER/DELIVERY DAMAGE       | VL - VACUUM TEST LEAK          |
| CR - CREASE                          | DS-II - DESTRUCTIVE TEST NUMBER         | OTHER:                                  | WR - WRINKLE                   |
| D - INSTALLATION DAMAGE              |   |   | WS - WELDER RESTANT            |

SUBMITTED BY: ASm  
DATE: Sept. 9, 2007

LAYFIELD ENVIRONMENTAL SYSTEMS



SHOP QC

|                |                                 |       |             |
|----------------|---------------------------------|-------|-------------|
| Job Desc.      | Baffinland Mary River Panel B r |       |             |
| Customer:      | Raymac Environmental            |       |             |
| Sales Person:  | frc                             | Date: | 8-Aug-07    |
| Material Type: | HAZGARD 500 Red 71"             |       |             |
| Prod Code:     | 0                               |       |             |
| Fab Code:      | 03LMHZ50                        |       |             |
| Length         | <b>126.3</b>                    | Width | <b>60.4</b> |

| Special Fabrication Instructions | Description of Operations/Procedures |
|----------------------------------|--------------------------------------|
|----------------------------------|--------------------------------------|

[illegible]

Repairs

Quantity

Liner# / Panels

Piece #

Roll Tag #

spliced panel #2, seam/liner #1 37' from start  
half panel spliced 26' from start liners 1 + 2  
splice panel #5 liner #2 26' from start  
Panel 10 spliced at 60ft.

|       |     |        |       |         |
|-------|-----|--------|-------|---------|
| Mach: | PFS | Speed: | Temp: | Splice: |
|       |     |        |       |         |

| 3 | Tech/Date (Seam #) |
|---|--------------------|
|   |                    |

Peel (Seam #) 60Shear (Seam #) ~~93.3~~ 93.375

4939163

[illegible]

| Inspections | #1   | #2   | #3   | Final |
|-------------|------|------|------|-------|
|             | Done | done | done | done  |

|              |    |           |
|--------------|----|-----------|
| Donna Stroud | #2 | Garner    |
| day 9.07     |    | Aug 11/07 |





## Certification Results: Containment Laminate



Head Office: 52 Middleton St. Cambridge, Ontario, N1R 5T6 phone 519 623 1630 fax 519 740 2977

SPEC 10508  
LOT# V59483 - E22443 Edm (H2 500)  
ROLLS 1-26  
Date: April 25/07

| Property                  | Result      | Test Method                    |
|---------------------------|-------------|--------------------------------|
| Thickness (mils)          | 40.5        | ASTM D5199                     |
| Tensile ( lbs.)           | 222 x 200   | ASTM D751                      |
| Tear Resistance ( lbs. )  | 95.7 x 73.4 | ASTM D751                      |
| Low Temperature ( -30°C ) | Passed      | ASTM D2136                     |
| Dim. Stability ( % )      | 0.5 x 0.0   | ASTM 1204<br>( 100°C 15 Min. ) |
| Volatile Loss (%)         | Pass        | ASTM 1203 A                    |

PASS  
J.K.



## Certification Results: Containment Laminate



Head Office: 52 Middleton St. Cambridge, Ontario, N1R 5T6 phone 519 623 1630 fax 519 740 2977

SPEC 10508  
LOT# V59483  
ROLLS 27-45  
Date: April 25/07

| Property                  | Result      | Test Method                    |
|---------------------------|-------------|--------------------------------|
| Thickness (mils)          | 40.5        | ASTM D5199                     |
| Tensile ( lbs.)           | 245 x 213   | ASTM D751                      |
| Tear Resistance ( lbs. )  | 94.4 x 91.6 | ASTM D751                      |
| Low Temperature ( -30°C ) | Passed      | ASTM D2136                     |
| Dim. Stability ( % )      | 0.5 x 0.0   | ASTM 1204<br>( 100°C 15 Min. ) |
| Volatile Loss (%)         | Pass        | ASTM 1203 A                    |



## Certification Results: Containment Laminate



Head Office: 52 Middleton St. Cambridge, Ontario, N1R 5T6 phone 519 623 1630 fax 519 740 2977

SPEC 10508  
LOT# V59483  
ROLLS 46LR  
Date: April 25/07

| Property                  | Result      | Test Method                    |
|---------------------------|-------------|--------------------------------|
| Thickness (mils)          | 40          | ASTM D5199                     |
| Tensile ( lbs.)           | 239 x 212   | ASTM D751                      |
| Tear Resistance ( lbs. )  | 78.1 x 60.0 | ASTM D751                      |
| Low Temperature ( -30°C ) | Passed      | ASTM D2136                     |
| Dim. Stability ( % )      | 0.5 x 0.0   | ASTM 1204<br>( 100°C 15 Min. ) |
| Volatile Loss (%)         | Pass        | ASTM 1203 A                    |



# Certification Results: Containment Laminate



Head Office: 52 Middleton St. Cambridge, Ontario, N1R 5T6 phone 519 623 1630 fax 519 740 2977

SPEC 10508  
LOT# Y98375 - E22442 (H7500)  
ROLLS 1-26  
Date: April 10/06

| Property                  | Result      | Test Method                    |
|---------------------------|-------------|--------------------------------|
| Thickness (mils)          | 41.5        | ASTM D5199                     |
| Tensile ( lbs.)           | 233 x 219   | ASTM D751                      |
| Tear Resistance ( lbs. )  | 78.5 x 62.1 | ASTM D751                      |
| Low Temperature ( -30°C ) | Passed      | ASTM D2136                     |
| Dim. Stability ( % )      | 0.5 x 0.0   | ASTM 1204<br>( 100°C 15 Min. ) |
| Volatile Loss (%)         | Pass        | ASTM 1203 A                    |

PASSE  
I.K.



## Certification Results: Containment Laminate



Head Office: 52 Middleton St. Cambridge, Ontario, N1R 5T6 phone 519 623 1630 fax 519 740 2977

SPEC 10508  
LOT# Y98375  
ROLLS 27-48  
Date: April 10/06

| Property                  | Result      | Test Method                    |
|---------------------------|-------------|--------------------------------|
| Thickness (mils)          | 40          | ASTM D5199                     |
| Tensile ( lbs. )          | 250 x 226   | ASTM D751                      |
| Tear Resistance ( lbs. )  | 79.8 x 55.9 | ASTM D751                      |
| Low Temperature ( -30°C ) | Passed      | ASTM D2136                     |
| Dim. Stability ( % )      | 0.8 x 0.0   | ASTM 1204<br>( 100°C 15 Min. ) |
| Volatile Loss (%)         | Pass        | ASTM 1203 A                    |



## Certification Results: Containment Laminate



Head Office: 52 Middleton St. Cambridge, Ontario, N1R 5T6 phone 519 623 1630 fax 519 740 2977

SPEC 10508  
LOT# Y98375  
ROLLS 49LR  
Date: April 10/06

| Property                  | Result      | Test Method                    |
|---------------------------|-------------|--------------------------------|
| Thickness (mils)          | 40.1        | ASTM D5199                     |
| Tensile ( lbs.)           | 247 x 212   | ASTM D751                      |
| Tear Resistance ( lbs. )  | 78.7 x 58.2 | ASTM D751                      |
| Low Temperature ( -30°C ) | Passed      | ASTM D2136                     |
| Dim. Stability ( % )      | 0.5 x 0.0   | ASTM 1204<br>( 100°C 15 Min. ) |
| Volatile Loss (%)         | Pass        | ASTM 1203 A                    |





LAYFIELD ENVIRONMENTAL SYSTEMS LTD.  
11603 – 180 Street Edmonton, Alberta T5S 2H6 Canada

# Phone: (780) 453-6731  
# Fax: (780) 452-9495  
# Toll Free: 1 800 840-2884

# Web: [www.layfieldgroup.com](http://www.layfieldgroup.com)  
# E-Mail: [edm@layfieldgroup.com](mailto:edm@layfieldgroup.com)

### **INSTALLATION WARRANTY**

Customer Reference No. PO# 201738  
Layfield Reference No. : 07C-015

LAYFIELD ENVIRONMENTAL SYSTEMS LTD. (LAYFIELD) hereby warrants to Baffinland Iron Mines Corp.; (the Customer) that the work performed by LAYFIELD on the Installation described as Milne Inlet, Mary River Fuel Farms – Hazgard 500 will:

1. Meet the field seam specifications set out in the contract between LAYFIELD and the Customer (as amended by LAYFIELD's quotation), all workmanship to meet the requirements of LAYFIELD's Field Installation Quality Assurance program, and be free of defects at the time of completion of the Installation; and
2. Be free of installation defects from the date of the completion of the Installation (as identified on the Layfield Certificate of Final Inspection and Acceptance), for a period of 1 year so long as the completed Installation is used for the purposes and in the manner for which the Installation was designed.

Should damage or defects within the scope of the aforesaid warranties occur, LAYFIELD shall repair the damage or defects, PROVIDED THAT the area to be repaired must first be made ready by the Customer and be in a clean, dry, unencumbered condition, free from all water, soil, sludge, residuals, and liquids of any kind.


To enable LAYFIELD to investigate and determine the cause of any alleged damage or defect, notice and details of any claim hereunder must be presented in writing to LAYFIELD within thirty (30) days after the alleged damage or defect was first noticed or observed. Failure to provide such notice and details shall invalidate all warranties provided hereunder.

The liability of LAYFIELD under the aforesaid warranties are subject to the following conditions:

- a. LAYFIELD's only obligation shall be to repair or replace any defective workmanship and in no event shall LAYFIELD be liable for any amount in excess of the cost of the Installation;
- b. No allowance will be made for repairs, replacements or alterations made by the Customer unless with the prior written consent of LAYFIELD;
- c. The warranties hereunder extend only to the Customer and are not transferable;
- d. The warranties hereunder shall not apply to any damage or defects resulting from misuse, mechanical abuse by machinery, equipment or persons, excessive pressures or stresses, exposure of the completed Installation of harmful chemicals, unusual weather conditions, casualty catastrophe such as (but not limited to) earthquake, flood, hail, tornado, or any other act of God;

- e. Under no circumstances shall LAYFIELD be liable for any special, direct, indirect, or consequential damages including the loss of use of the Installation howsoever caused;
- f. All liner materials provided for the Installation are covered by a separate warranty provided by Canadian General-Tower Limited , and LAYFIELD shall not be liable for material failure claims hereunder;
- g. The warranties hereunder are given in lieu of all other warranties, express, implied, statutory, or otherwise, and the Customer expressly waives all other warranties and claims whatsoever except those specifically given herein, and the Customer acknowledges that the warranties hereunder are accepted in preference to and to the exclusion of any or all other warranties; and
- h. An Installation Warranty will not be provided for lining projects unless the installation is completed by LAYFIELD personnel or designated LAYFIELD subcontractors.

LAYFIELD ENVIRONMENTAL SYSTEMS LTD.

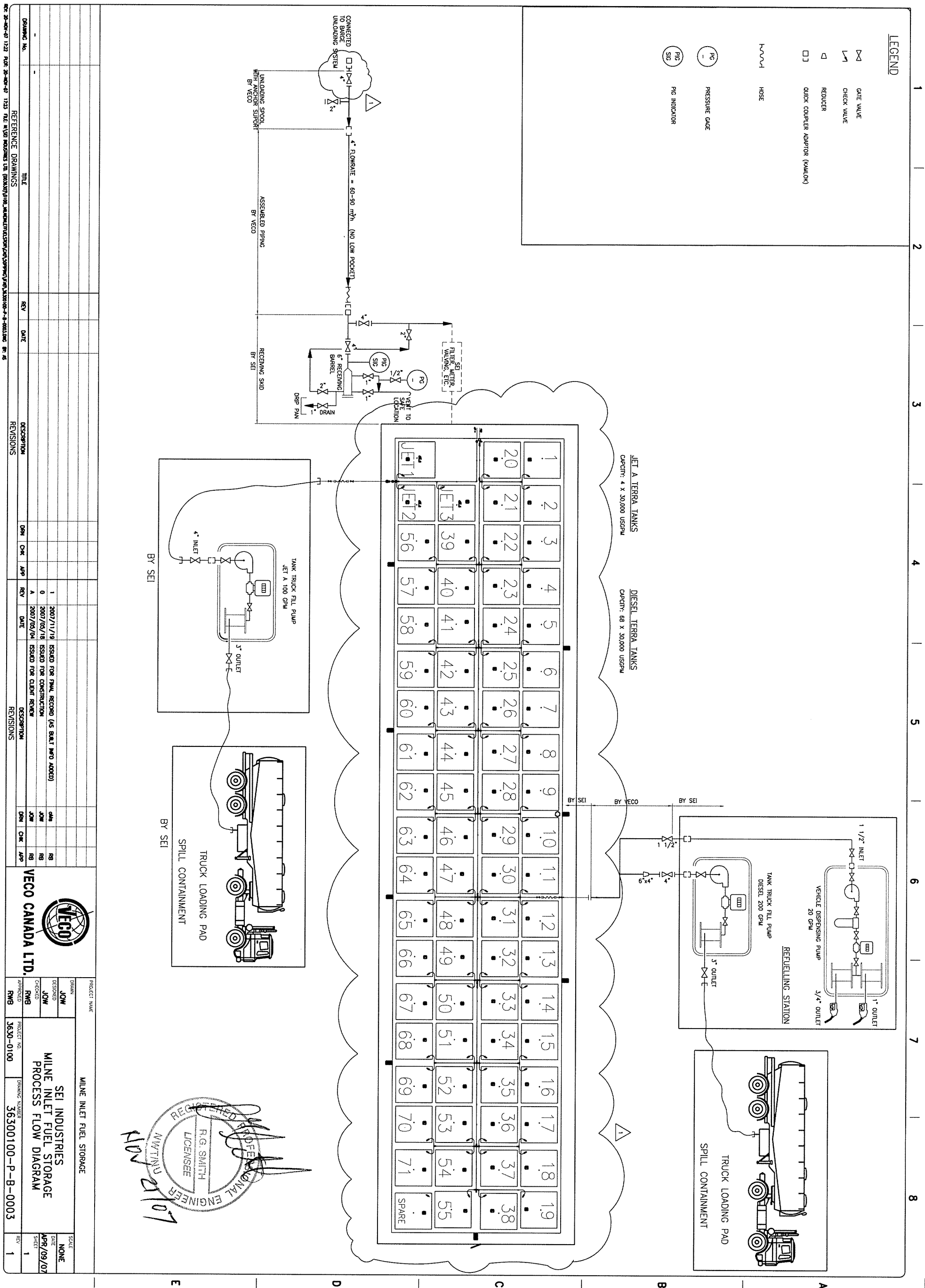


Al McRae, Director or Construction Operations

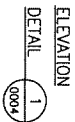
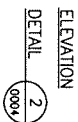


RECEIVED

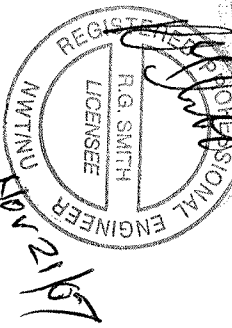
*By Richard Dwyer at 5:20 pm, Mar 31, 2011*



*By Richard Dwyer at 5:20 pm, Mar 31, 2011*

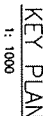


- NOTES:**
- 1) TWO WOODEN BLOCK SUPPORTS ARE REQUIRED PER PIPE SPOOL. FIELD ADJUST THE LOCATION AND HEIGHTS OF SUPPORT TO ENSURE THE MAX. DEFLECTION PER COUPLING NOT MORE THAN 2 DEGREES AND THE MAX. PIPE SUPPORT SPAN NOT MORE THAN 3.5 METERS.
  - 2) FIELD TEND AND WELD PIPE TO MATCH PIPE SLOPE.
  - 3) SLOPE PIPE FROM TANK FARM TO SHORE TO AVOID ANY LOW POCKET.



|              |  |  |  |  |  |  |  |  |  |                          |  |  |  |  |  |  |  |  |  |
|--------------|--|--|--|--|--|--|--|--|--|--------------------------|--|--|--|--|--|--|--|--|--|
| PROJECT NAME |  |  |  |  |  |  |  |  |  | MILNE INLET FUEL STORAGE |  |  |  |  |  |  |  |  |  |
| DRAWN        |  |  |  |  |  |  |  |  |  | SCALE                    |  |  |  |  |  |  |  |  |  |
| QMS          |  |  |  |  |  |  |  |  |  | 1 : 20                   |  |  |  |  |  |  |  |  |  |
| DESIGNED     |  |  |  |  |  |  |  |  |  | DATE                     |  |  |  |  |  |  |  |  |  |
|              |  |  |  |  |  |  |  |  |  | APR/04/07                |  |  |  |  |  |  |  |  |  |
| CHECKED      |  |  |  |  |  |  |  |  |  | SHEET                    |  |  |  |  |  |  |  |  |  |
| RWB          |  |  |  |  |  |  |  |  |  | 1                        |  |  |  |  |  |  |  |  |  |
| PROJECT NO.  |  |  |  |  |  |  |  |  |  | ISSUANCE NUMBER          |  |  |  |  |  |  |  |  |  |
| 3630-0100    |  |  |  |  |  |  |  |  |  | 36500100-P-M-0005        |  |  |  |  |  |  |  |  |  |
| REV          |  |  |  |  |  |  |  |  |  | 1                        |  |  |  |  |  |  |  |  |  |

*By Richard Dwyer at 5:20 pm, Mar 31, 2011*



NOTE  
1.) PIPE LINE  $\phi$  TO BE APPROX.  
1 METER ABOVE GRADE.



|                     |  |  |  |  |  |  |  |  |  |                          |  |  |  |  |  |  |  |  |  |
|---------------------|--|--|--|--|--|--|--|--|--|--------------------------|--|--|--|--|--|--|--|--|--|
| PROJECT NAME        |  |  |  |  |  |  |  |  |  | MILNE INLET FUEL STORAGE |  |  |  |  |  |  |  |  |  |
| SCALE               |  |  |  |  |  |  |  |  |  | SCALE                    |  |  |  |  |  |  |  |  |  |
| 1 : 20              |  |  |  |  |  |  |  |  |  | 1 : 20                   |  |  |  |  |  |  |  |  |  |
| DATE                |  |  |  |  |  |  |  |  |  | DATE                     |  |  |  |  |  |  |  |  |  |
| APR/19/07           |  |  |  |  |  |  |  |  |  | APR/19/07                |  |  |  |  |  |  |  |  |  |
| SHEET               |  |  |  |  |  |  |  |  |  | SHEET                    |  |  |  |  |  |  |  |  |  |
| 1                   |  |  |  |  |  |  |  |  |  | 1                        |  |  |  |  |  |  |  |  |  |
| REV                 |  |  |  |  |  |  |  |  |  | REV                      |  |  |  |  |  |  |  |  |  |
| 1                   |  |  |  |  |  |  |  |  |  | 1                        |  |  |  |  |  |  |  |  |  |
| DRAWING NUMBER      |  |  |  |  |  |  |  |  |  | DRAWING NUMBER           |  |  |  |  |  |  |  |  |  |
| 36300-0100-P-M-0006 |  |  |  |  |  |  |  |  |  | 36300-0100-P-M-0006      |  |  |  |  |  |  |  |  |  |
| PROJECT NO.         |  |  |  |  |  |  |  |  |  | PROJECT NO.              |  |  |  |  |  |  |  |  |  |
| 3630-0100           |  |  |  |  |  |  |  |  |  | 3630-0100                |  |  |  |  |  |  |  |  |  |
| DESIGNED            |  |  |  |  |  |  |  |  |  | DESIGNED                 |  |  |  |  |  |  |  |  |  |
| O.M.S.              |  |  |  |  |  |  |  |  |  | O.M.S.                   |  |  |  |  |  |  |  |  |  |
| CHECKED             |  |  |  |  |  |  |  |  |  | CHECKED                  |  |  |  |  |  |  |  |  |  |
| R.W.B.              |  |  |  |  |  |  |  |  |  | R.W.B.                   |  |  |  |  |  |  |  |  |  |
| APPROVED            |  |  |  |  |  |  |  |  |  | APPROVED                 |  |  |  |  |  |  |  |  |  |
| R.W.B.              |  |  |  |  |  |  |  |  |  | R.W.B.                   |  |  |  |  |  |  |  |  |  |

