

CAUTION: THIS PLAN MAY BE REDUCED

0 25mm 50mm ORIGINAL SCALE

NO.	REVISION	DATE	APRVD

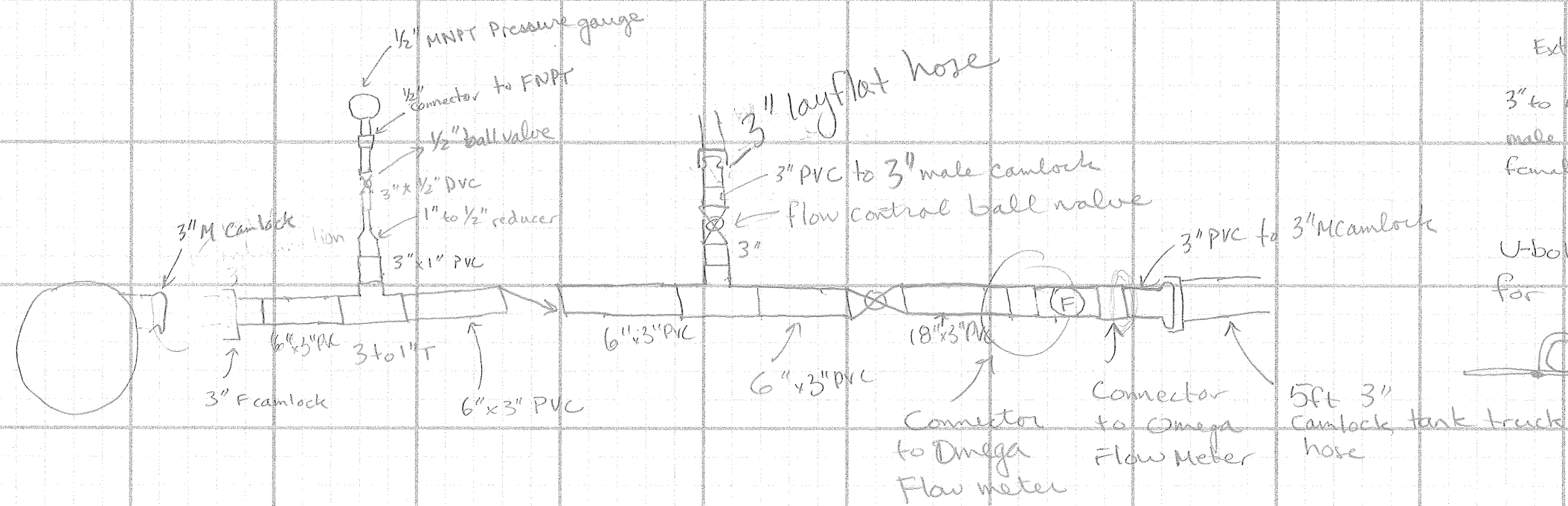
DRAWN JR JULY 2009  
DESIGNED JW JULY 2009  
CHECKED  
REVIEWED

AMEC Geomatrix  
AMEC Geomatrix Limited  
420 Weber Street, North, Unit G  
Waterloo, Ontario N2L 4E7  
(519) 886-7500

PROCESS FLOW DIAGRAM  
BAFFINLAND IRON MINES  
POND WASTEWATER TREATMENT

DATE: JULY 2009  
SCALE: N.T.S.  
SHEET: 1 OF 1 SHEETS  
PROJ No: W01446  
PFD-01

Detail #1



Extras

3" to 4" Camlock adaptor  
 male male 3" adaptor  
 female female 3" adaptor

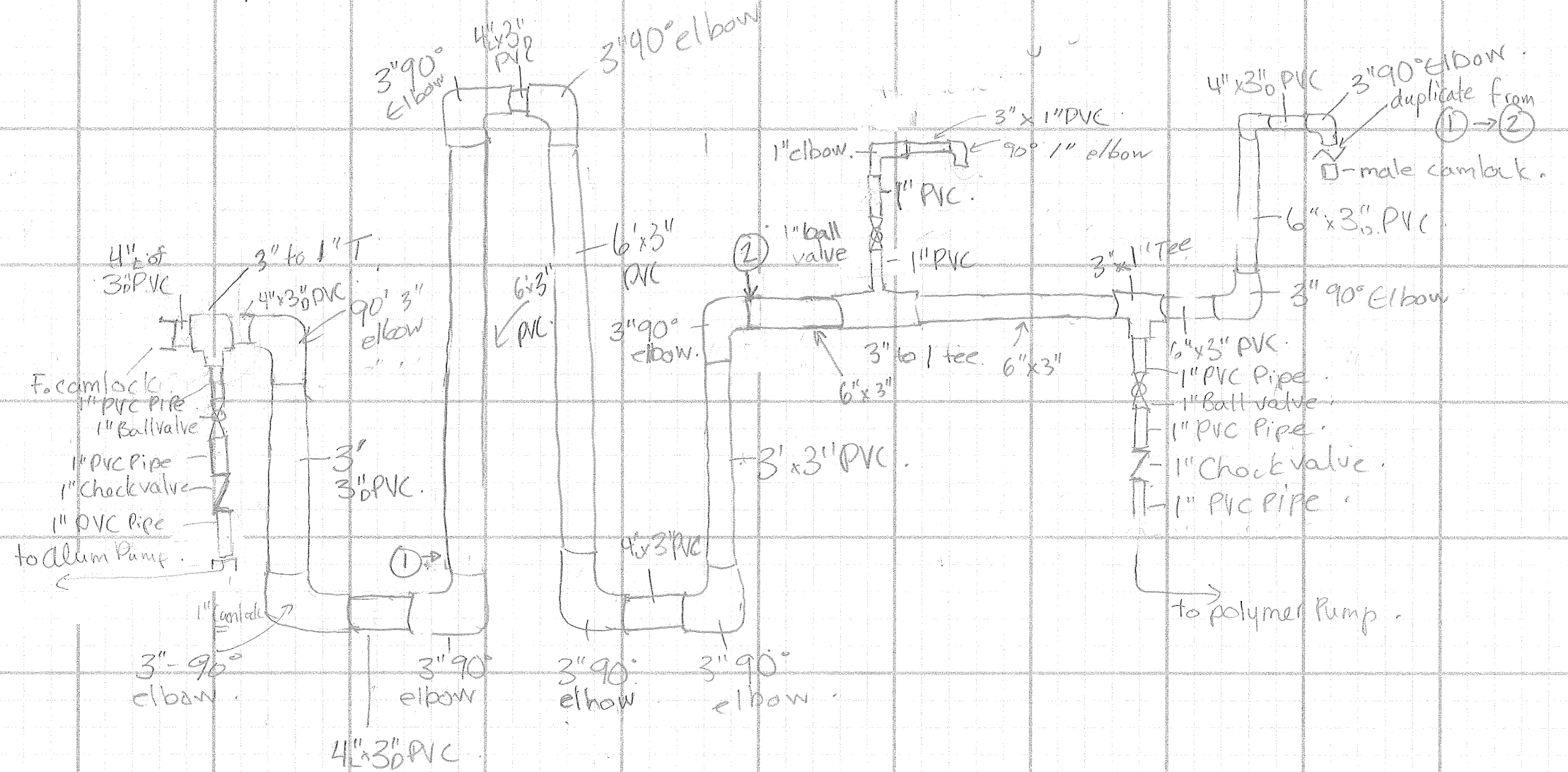
U-bolt to ply wood  
 for supports



5ft 3"  
 Camlock tank truck  
 hose

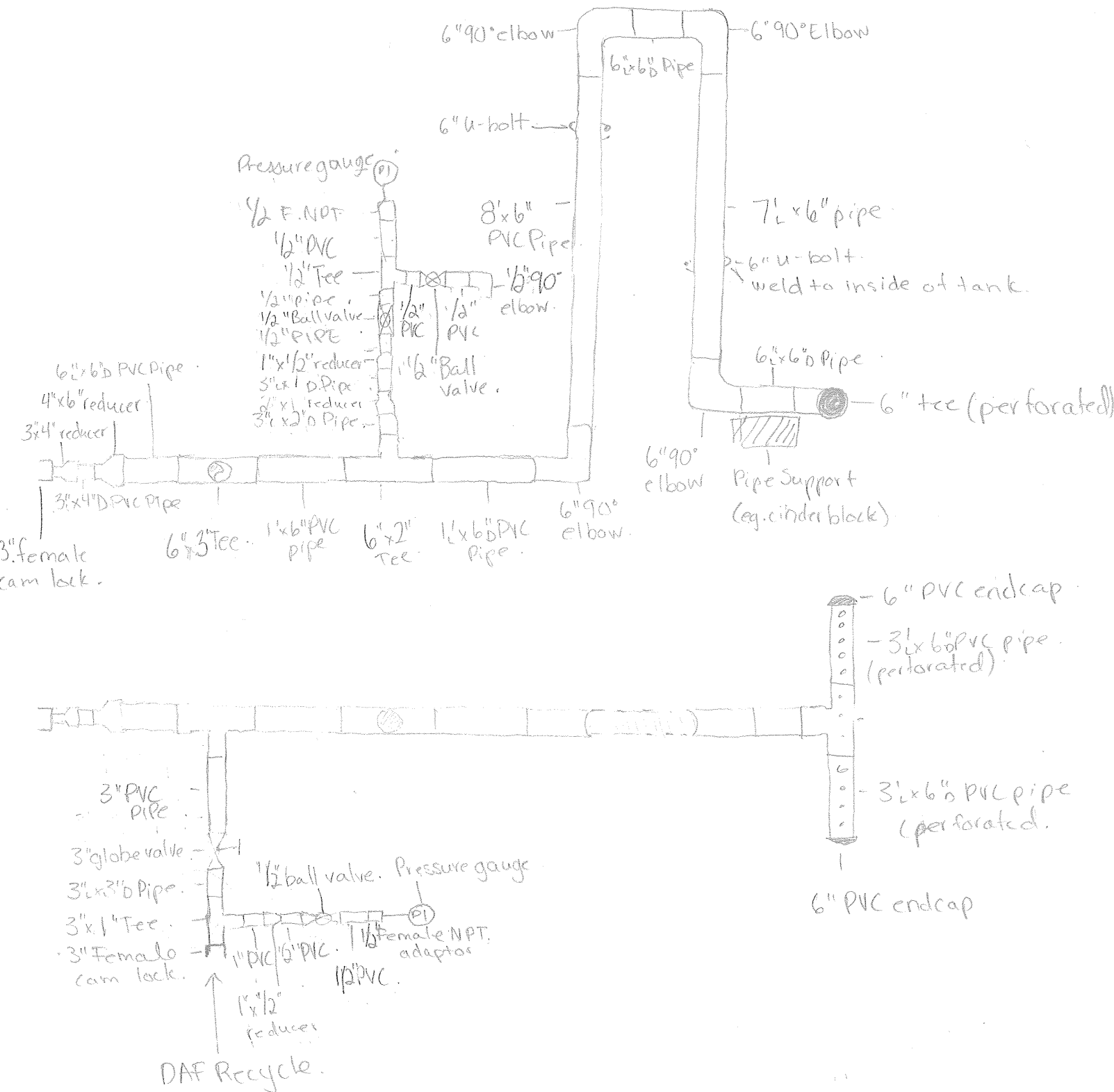
1. Omega Flow meter  
 2. 3" x 1" PVC  
 3. 1" to 1/2" reducer  
 4. 1/2" ball valve  
 5. 1/2" connector to FNPT  
 6. 1/2" MNPT Pressure gauge  
 7. 3" x 1/2" DVC  
 8. 3" x 1" PVC  
 9. 3" F camlock  
 10. 3" M camlock  
 11. 6" x 3" PVC  
 12. 6" x 3" PVC  
 13. 6" x 3" PVC  
 14. 18" x 3" PVC  
 15. Connector to Omega Flow meter  
 16. 3" PVC to 3" M camlock  
 17. Flow control ball valve  
 18. 3" PVC to 3" male camlock  
 19. 3" layflat hose  
 20. 3"

# Flocculator Detail #2



July 28 / 09.

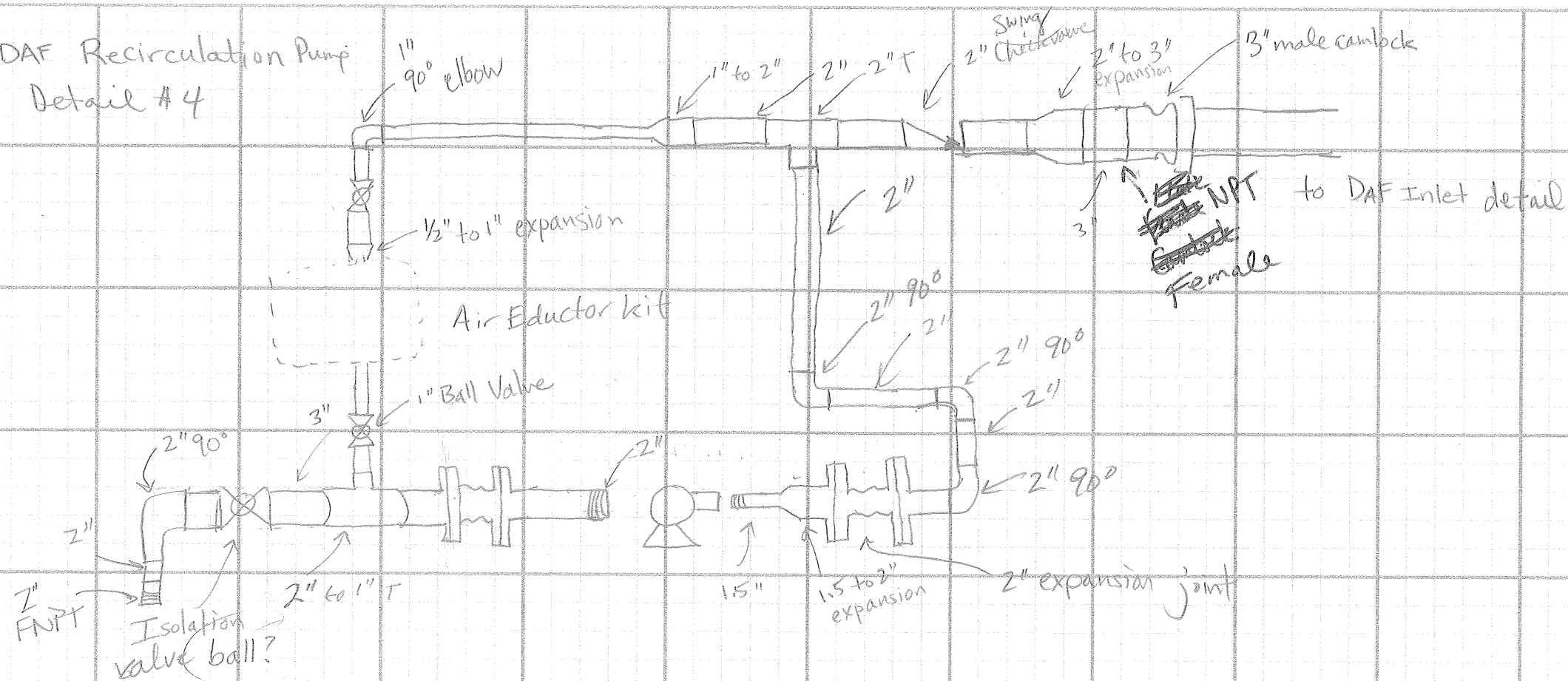
Detail #3



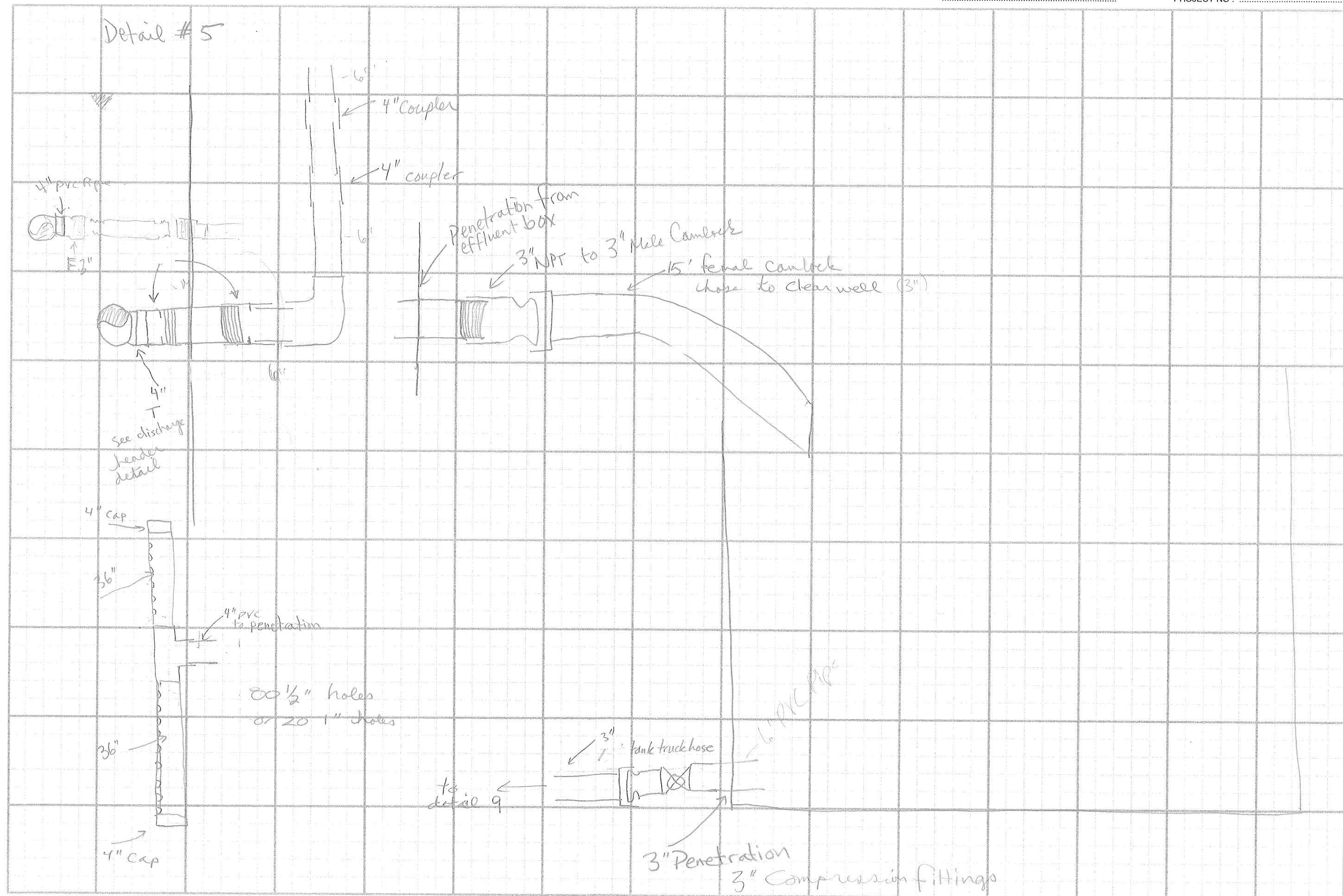
## DAF Rec / Header Detail.

July 28, 09.

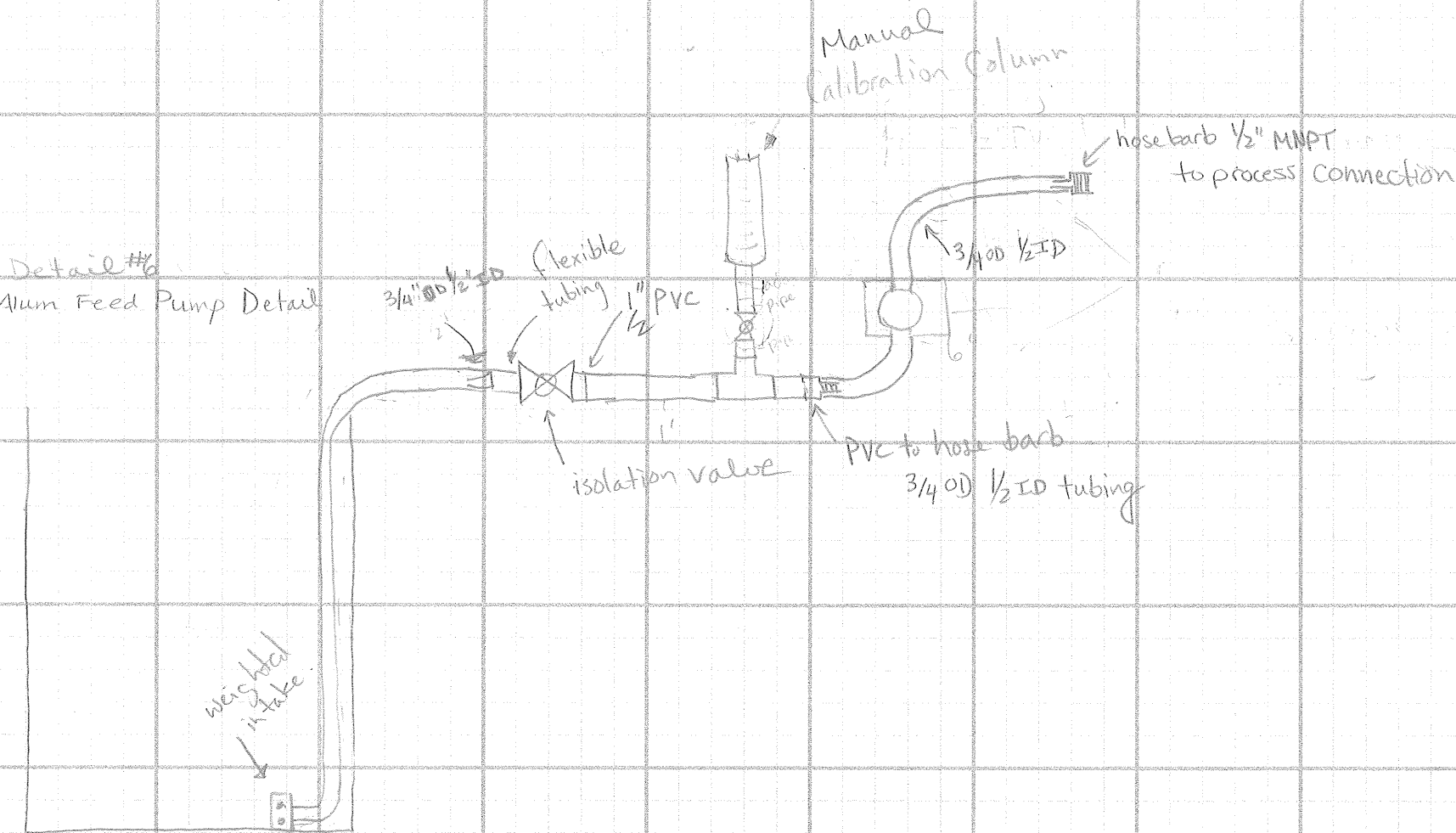
DAF Recirculation Pump  
Detail #4



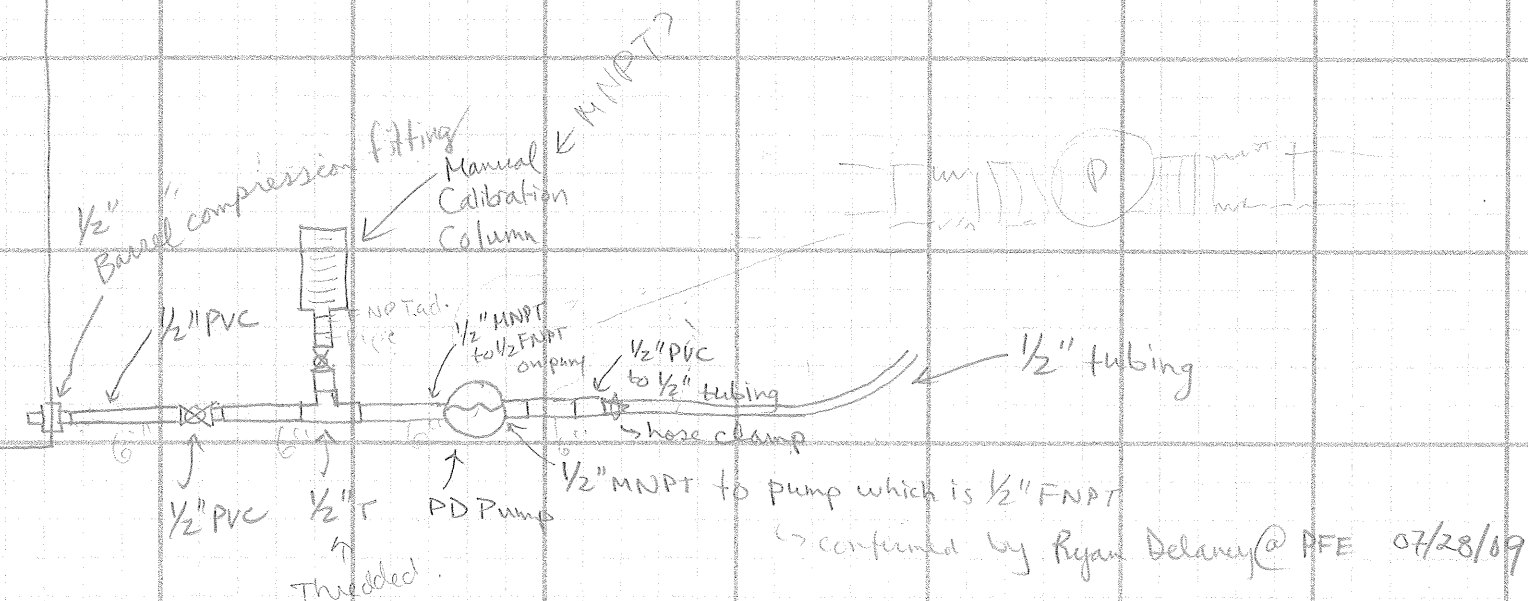




Detail #6  
Alum Feed Pump Detail



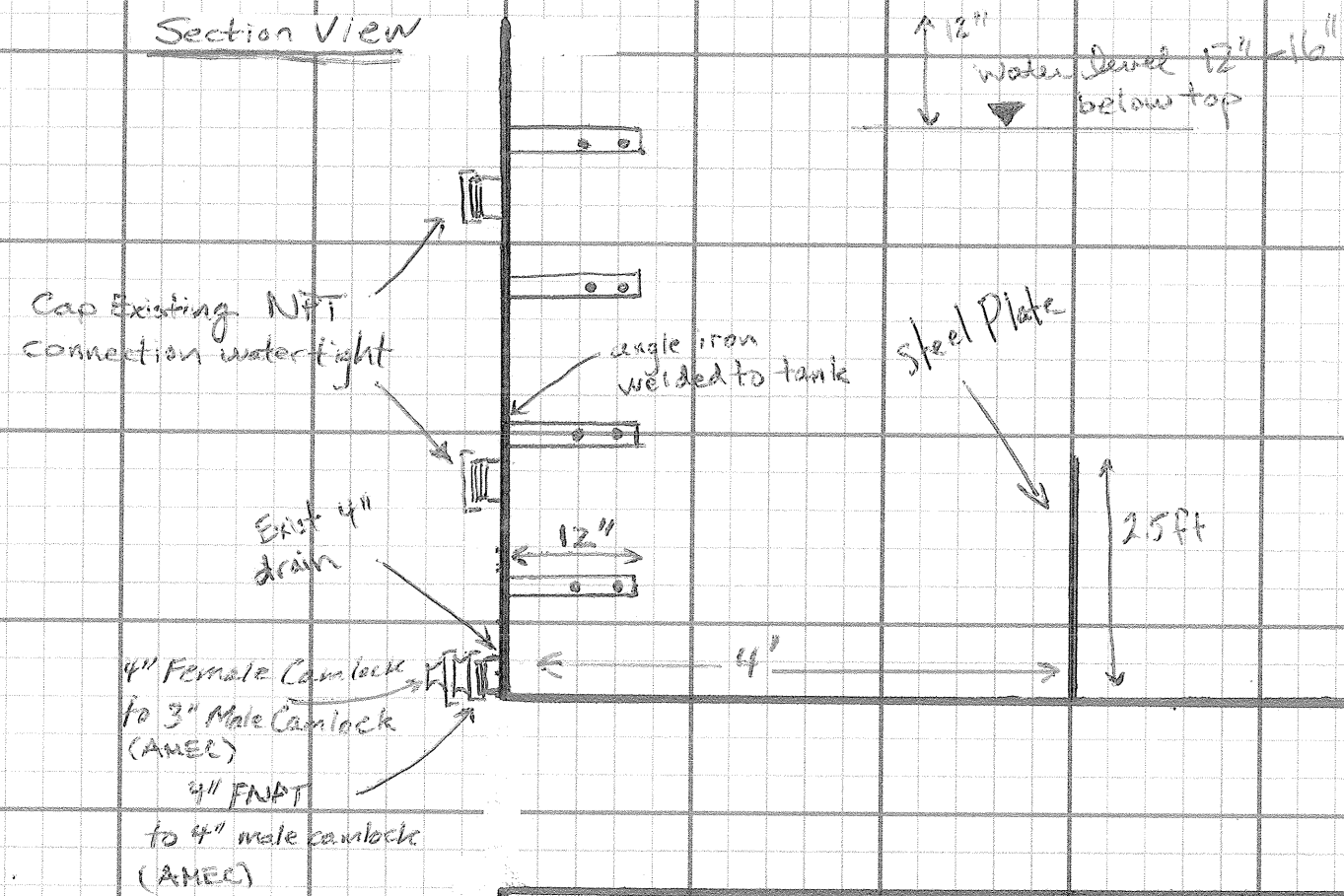
Detail #7



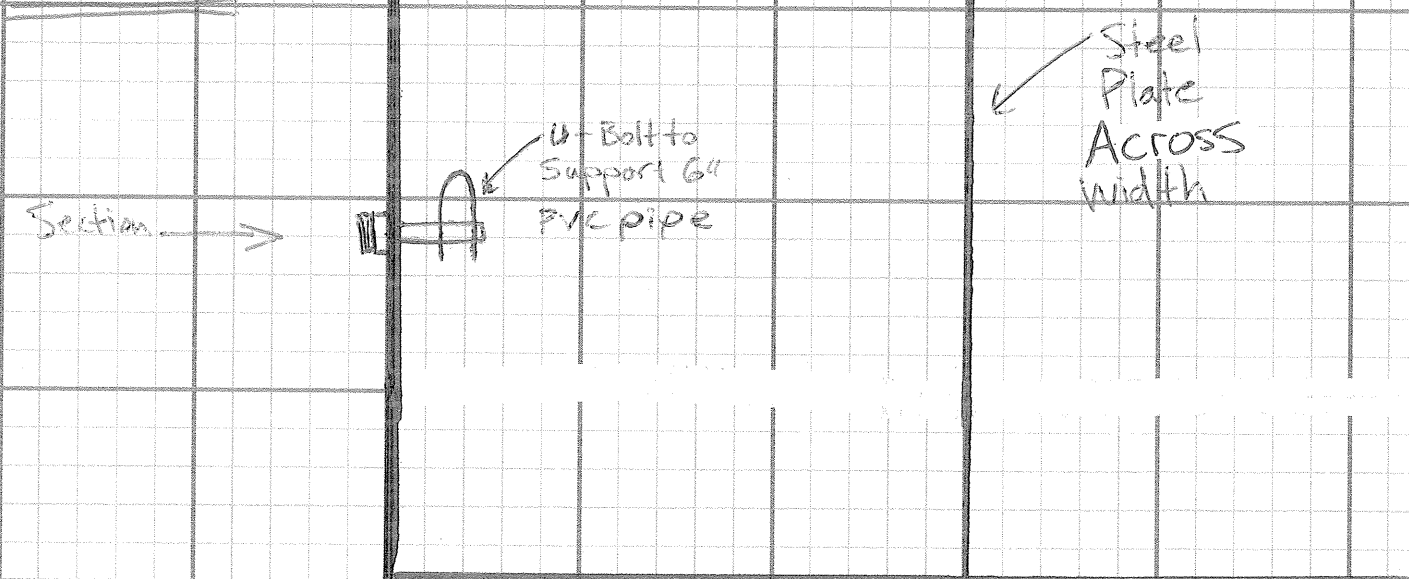
confirmed by Ryan Delaney@PFE 07/28/09

Detail 8a Skimming Tank Influent

## Section View



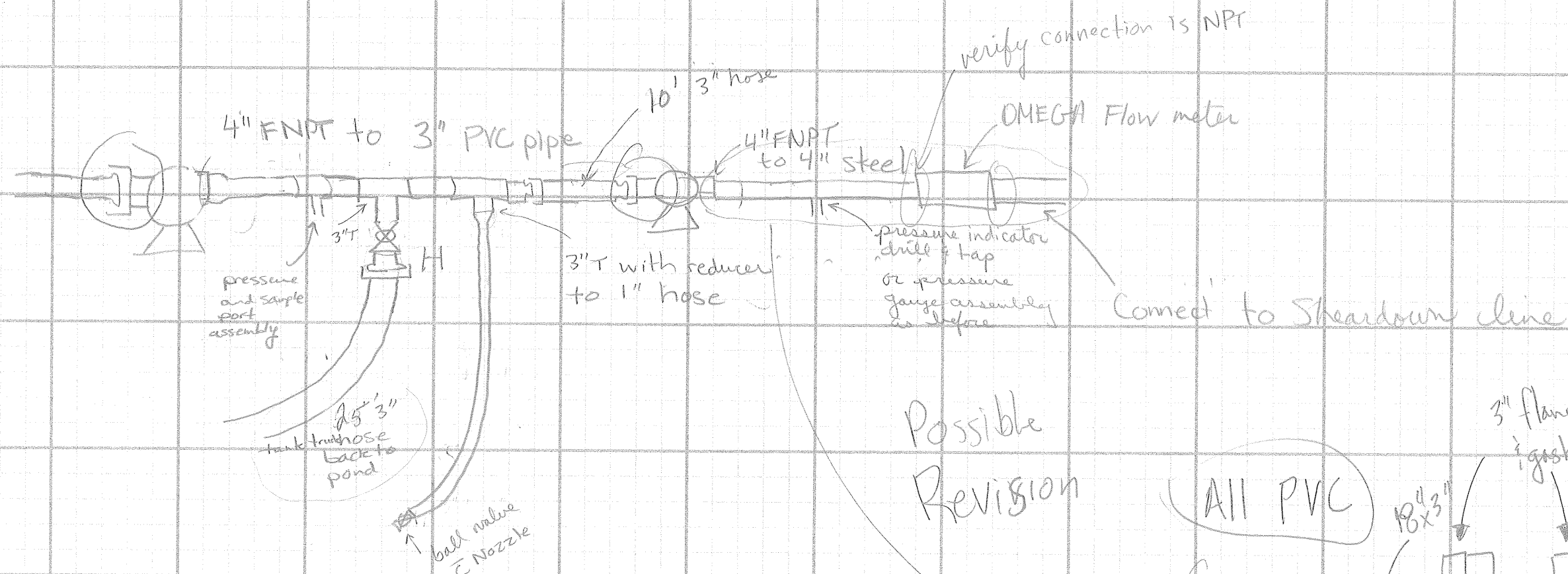
### Plan View



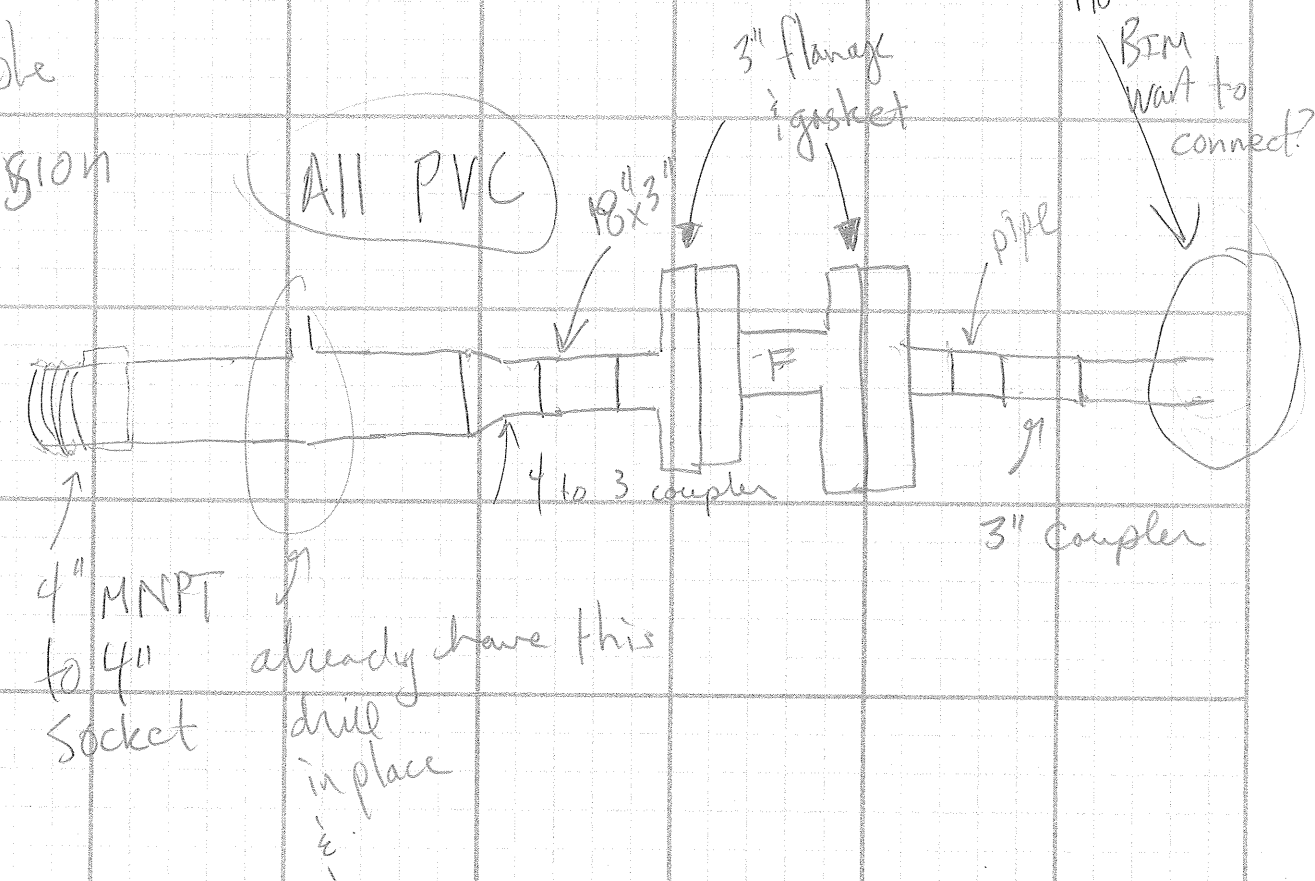




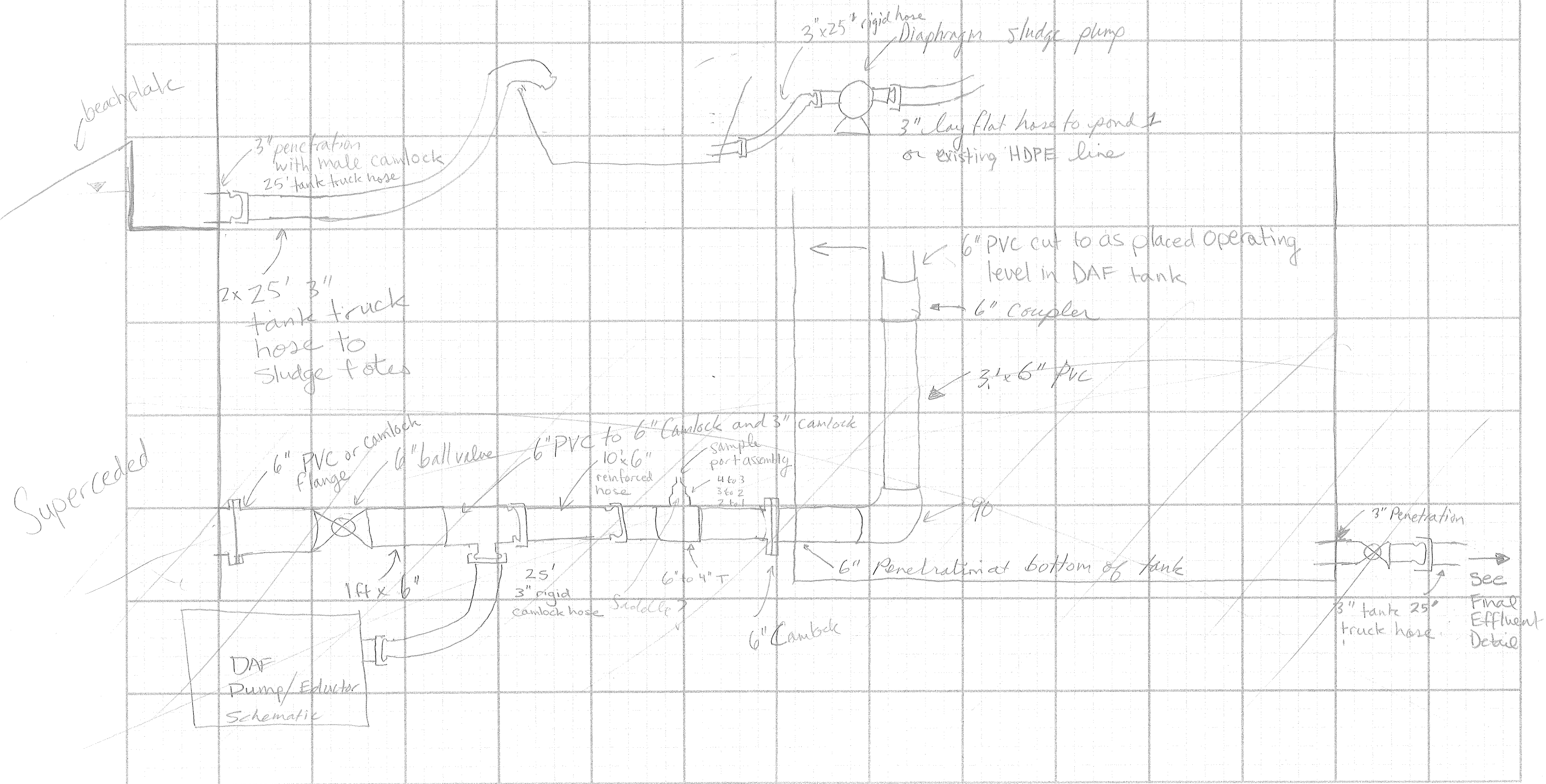
# Final Effluent detail #9

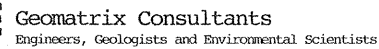


Possible Revision



# DAF Discharge Detail #10





BY ..... DATE .....

SHEET NO. .... OF .....

PROJECT NO. ....

