

**RECEIVED**

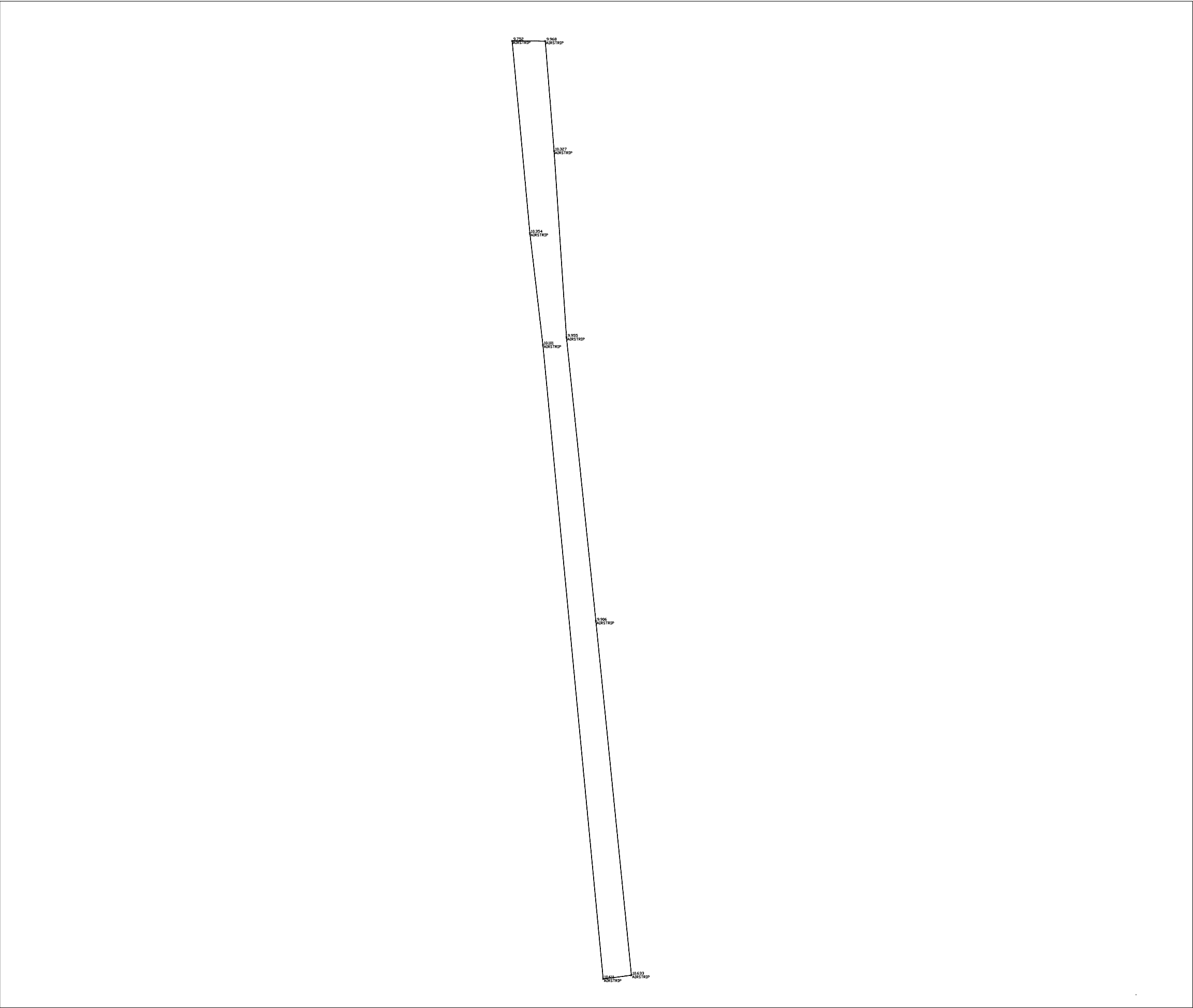
*By Richard Dwyer at 5:18 pm, Mar 31, 2011*

**2011 ABANDONMENT AND RECLAMATION PLAN**

**Appendix B-2**

**Milne Inlet**

***(Included with Electronic Version Only)***



This Drawing is an instrument of service and shall remain the property of **B.H. Martin Consultants Ltd.** It may not be reproduced or copied in any form. It shall not be used for the construction, enlargement or alteration of a building other than the said project without the authorization of the ARCHITECT and/or ENGINEER.

Contractors shall verify and be responsible for all dimensions and conditions on the job and report any discrepancies to the Architect and/ or Engineer before proceeding with the work.

Drawings shall not be scaled.

Description	Date	No.
Revisions and Issues		



NORTH

Date Printed



**B.H. MARTIN CONSULTANTS LTD.**  
Consulting Engineers and Architect  
Timmins Ontario  
www.bhmartin.com

ARCHITECT	STRUCTURAL/CIVIL
_____	_____
_____	_____

MECHANICAL	ELECTRICAL
_____	_____
_____	_____

Project

**MILNE INLET**

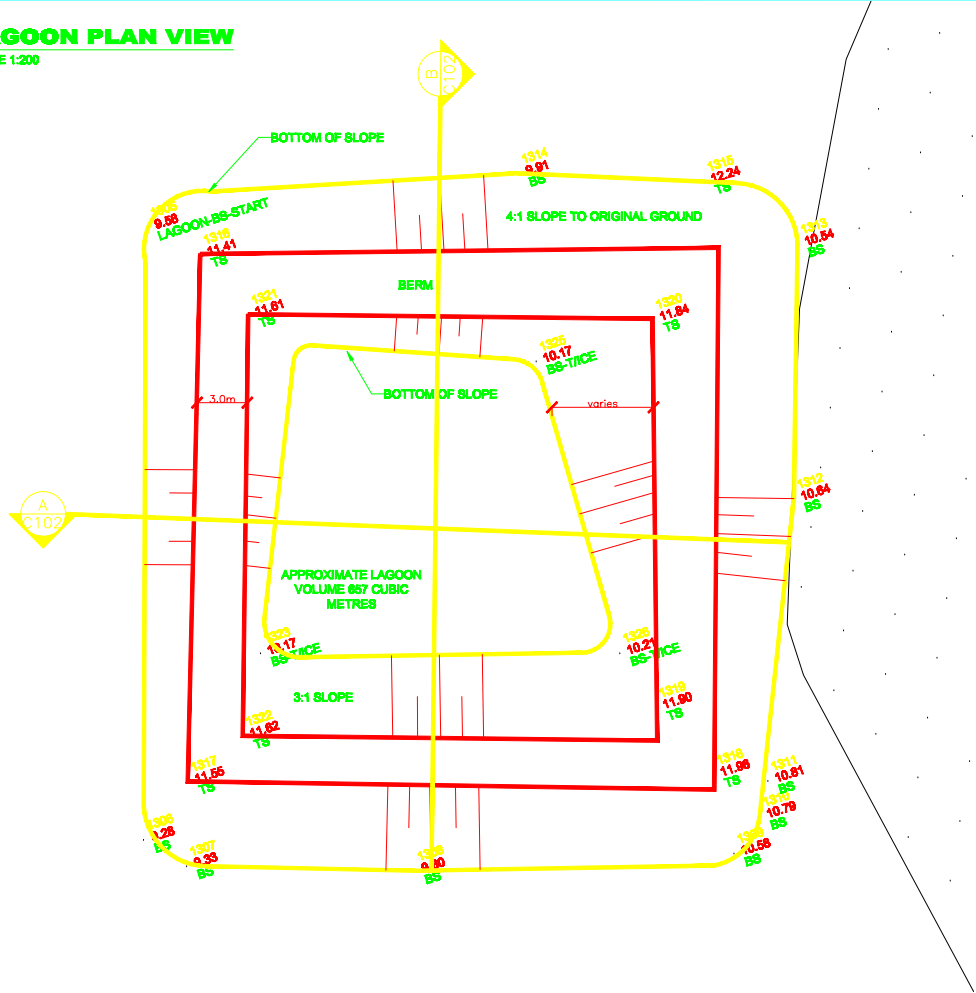
MARY-RIVER	NUNAVUT
------------	---------

Drawing

**AS BUILT RUNWAY**

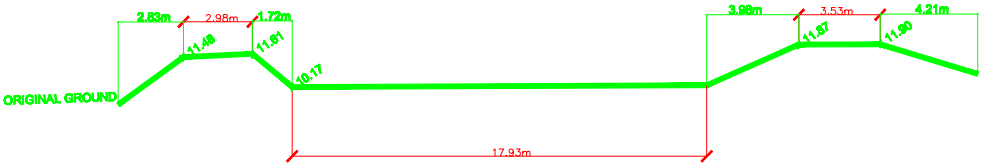
Date	CADD File Number
JAN 2008	CIVIL/SURV/MILNE/C101
Scale	Job Number
1:1600	<b>07-039</b>
Drawn	
AB	
Checked	Drawing Number
	<b>100_01_01</b>
Approved	

LAGOON PLAN VIEW  
SCALE 1:200



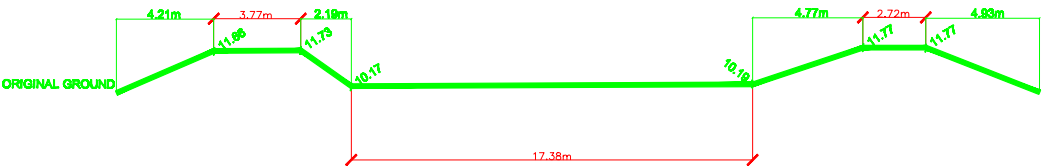
SECTION

A  
C102



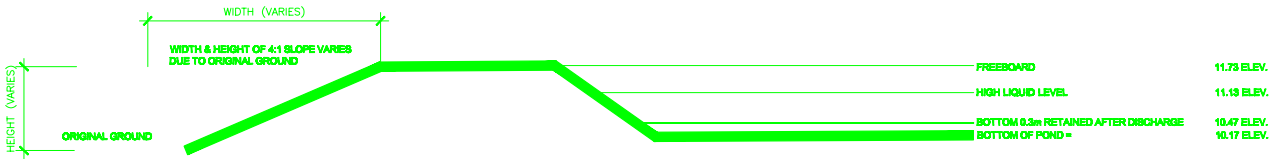
SECTION

B  
C102  
SCALE 1:150



TYPICAL LAGOON BERM

SCALE 1:75



This Drawing is an instrument of service and shall remain the property of B.H. Martin Consultants Ltd. It may not be reproduced or copied in any form. It shall not be used for the construction, enlargement or alteration of a building other than the said project without the authorization of the ARCHITECT and/or ENGINEER.

Contractors shall verify and be responsible for all dimensions and conditions on the job and report any discrepancies to the Architect and/or Engineer before proceeding with the work.

Drawings shall not be scaled.

Description	Date	No.
Revisions and Issues		



NORTH

Date Printed



B.H. MARTIN CONSULTANTS LTD.  
Consulting Engineers and Architect  
Timmins Ontario  
www.bhmartin.com

ARCHITECT STRUCTURAL/CIVIL

MECHANICAL ELECTRICAL

Project

MILNE INLET

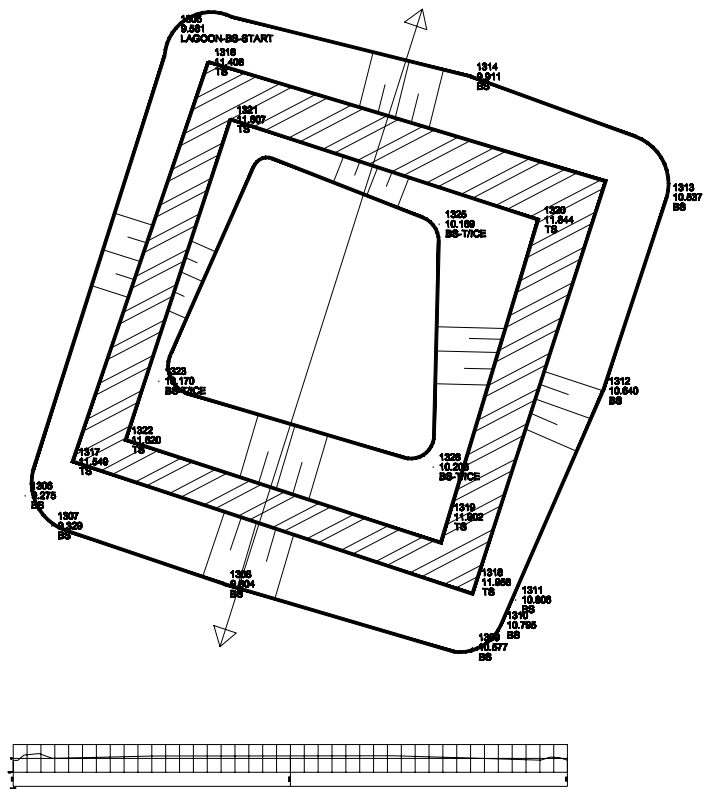
MARY-RIVER NUNAVUT

Drawing

AS BUILT  
SEWAGE LAGOON  
PLAN AND PROFILES

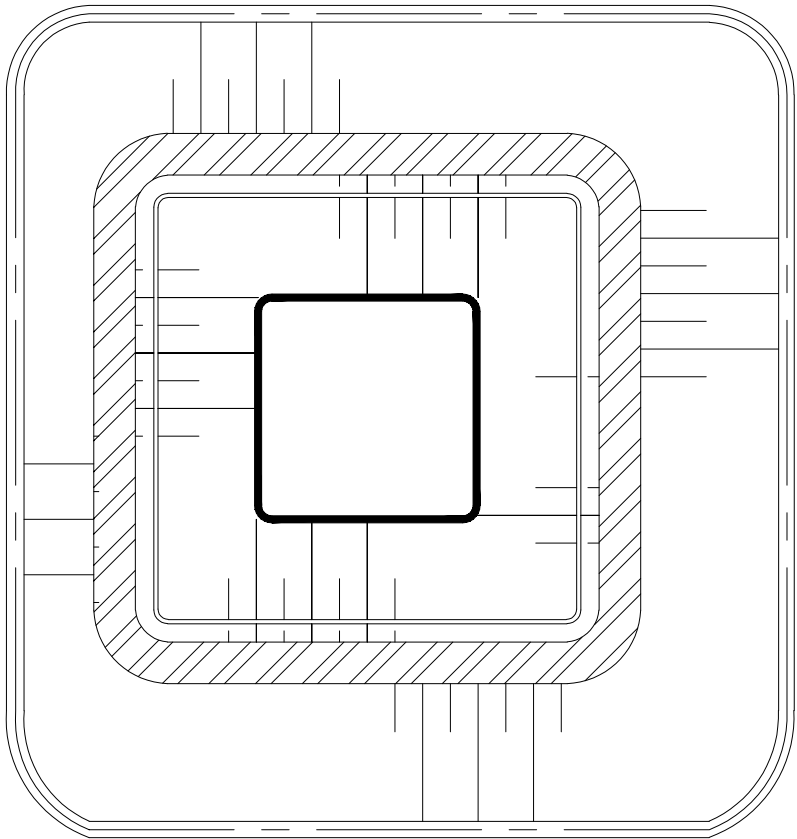
Date	JAN 2008	CADD File Number	milne-tpwsp-ldwg100_06_01
Scale	AS NOTED	Job Number	07-039
Drawn	AB	Drawing Number	100_06_01
Checked			
Approved			

AS BUILT



NOTE: AS BUILT VOLUME IS TO TOP OF BERM  
SINCE AS BUILT REPORT HAS NOT BEEN  
RECEIVED FROM LAYFIELD.

DESIGN



38.354m<sup>2</sup>(INCLUDING 0.3mSLUDGE)  
33.356m<sup>2</sup>(NOT INCLUDING 0.3mSLUDGE)

DESIGN VOLUME 1000 CUBIC METRES  
(INCLUDING SLUDGE)

This Drawing is an instrument of service and shall remain the property of B.H. Martin Consultants Ltd. It may not be reproduced or copied in any form. It shall not be used for the construction, enlargement or alteration of a building other than the said project without the authorization of the ARCHITECT and/or ENGINEER.

Contractors shall verify and be responsible for all dimensions and conditions on the job and report any discrepancies to the Architect and/ or Engineer before proceeding with the work.

Drawings shall not be scaled.

Description Date No.  
Revisions and Issues



NORTH

Date Printed



B.H. MARTIN CONSULTANTS LTD.  
Consulting Engineers and Architect  
Timmins Ontario  
www.bhmartin.com

ARCHITECT STRUCTURAL/CIVIL

MECHANICAL ELECTRICAL

Project

MILNE INLET

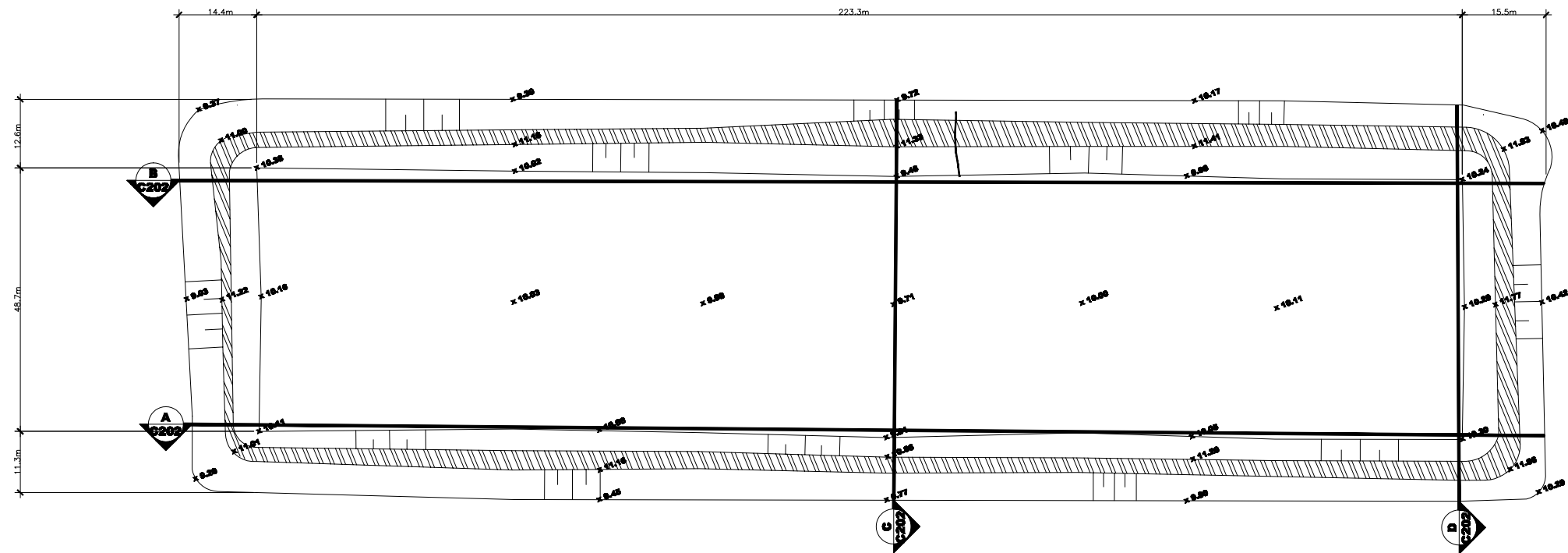
MARY-RIVER NUNAVUT

Drawing

AS BUILT  
AS BUILT vs DESIGN LAGOON

Date	JAN 2008	CADD File Number	CIVIL/SURV/MILNE/C101
Scale	1:120	Job Number	07-039
Drawn	AS		
Checked		Drawing Number	100_06_02
Approved			





This Drawing is an instrument of service and shall remain the property of B.H. Martin Consultants Ltd. It may not be reproduced or copied in any form. It shall not be used for the construction, enlargement or alteration of a building other than the said project without the authorization of the ARCHITECT and/or ENGINEER.

Contractors shall verify and be responsible for all dimensions and conditions on the job and report any discrepancies to the Architect and/ or Engineer before proceeding with the work.

Drawings shall not be scaled.

Description	Date	No.
Revisions and Issues		



NORTH

Date Printed



B.H. MARTIN CONSULTANTS LTD.  
Consulting Engineers and Architect  
Timmins Ontario  
www.bhmartin.com

ARCHITECT STRUCTURAL/CIVIL

MECHANICAL ELECTRICAL

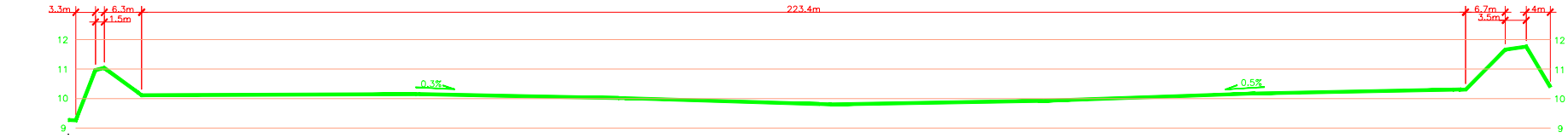
Project  
**Milne Inlet Project**  
**Baffinland Iron**  
**Mines Corp**  
Baffin Island Nunavut  
Drawing  
**Milne Inlet**  
**Fuel Farm Layout**  
**As Built**

Date Dec 2007	CADD File Number milne initial layout/100_06_04
Scale 1:500	Job Number <b>07-039</b>
Drawn AB	Drawing Number
Checked	<b>100_06_04</b>
Approved	

SECTION

SCALE 1:500

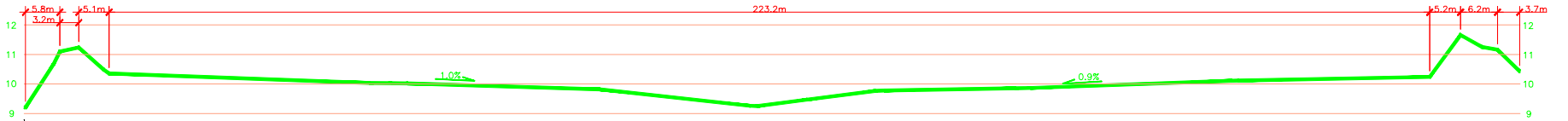
A  
C201



SECTION

SCALE 1:500

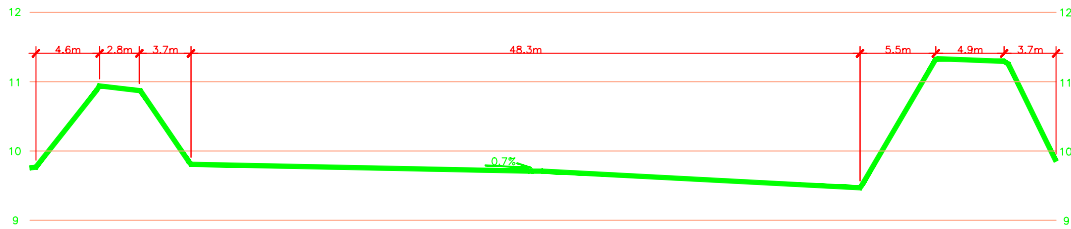
B  
C201



SECTION

SCALE 1:250

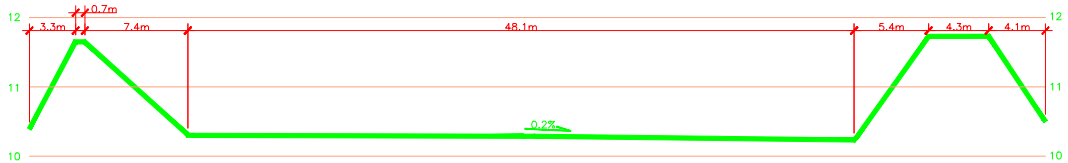
C  
C201



SECTION

SCALE 1:250

D  
C201



This Drawing is an instrument of service and shall remain the property of B.H. Martin Consultants Ltd. It may not be reproduced or copied in any form. It shall not be used for the construction, enlargement or alteration of a building other than the said project without the authorization of the ARCHITECT and/or ENGINEER.

Contractors shall verify and be responsible for all dimensions and conditions on the job and report any discrepancies to the Architect and/or Engineer before proceeding with the work.

Drawings shall not be scaled.

Description	Date	No.
Revisions and Issues		



NORTH

Date Printed

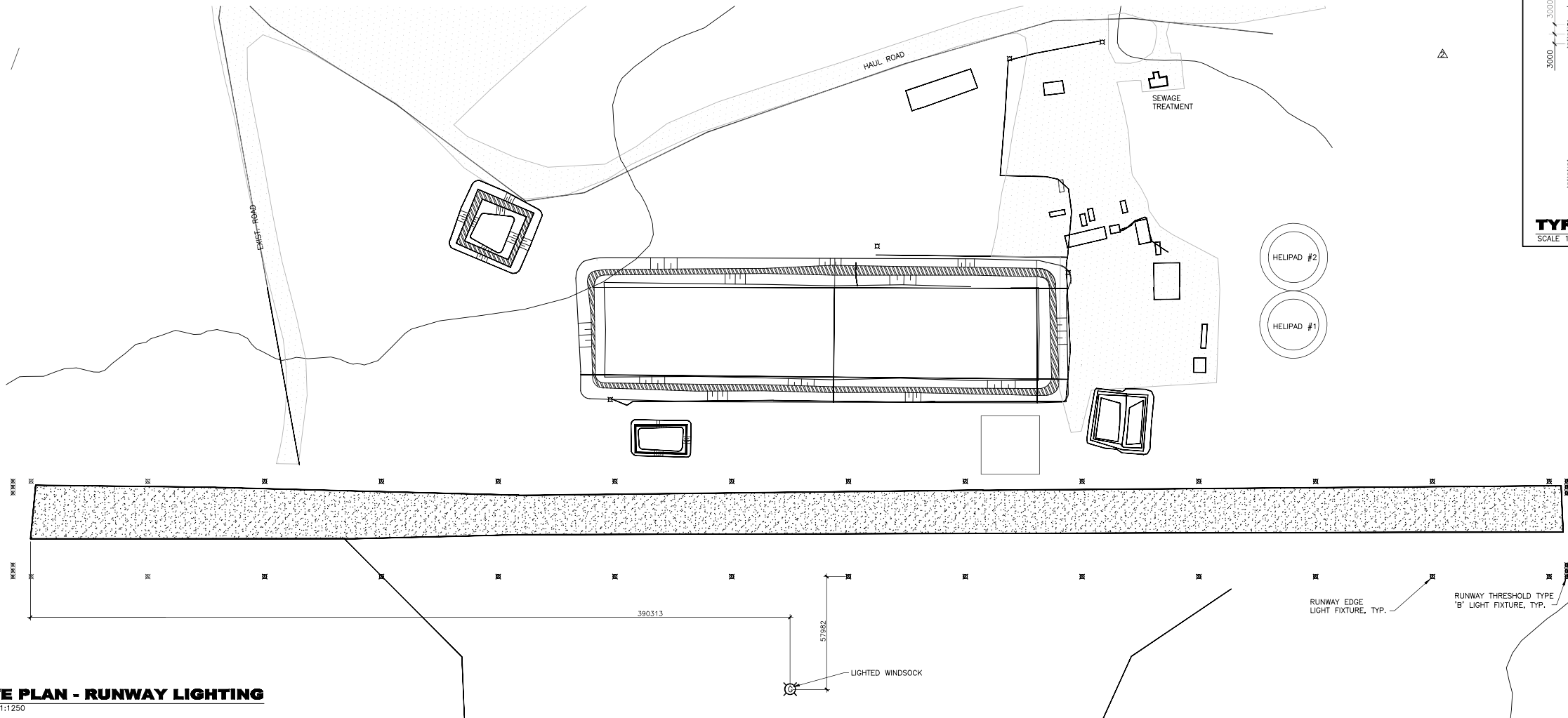


B.H. MARTIN CONSULTANTS LTD.  
Consulting Engineers and Architect  
Timmins Ontario  
www.bhmartin.com

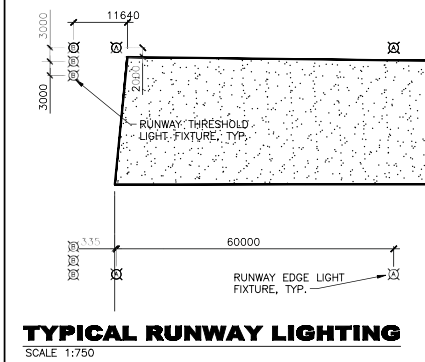
ARCHITECT	STRUCTURAL/CIVIL
MECHANICAL	ELECTRICAL

Project  
**MILNE INLET PROJECT**  
**BAFFINLAND IRON**  
**MINES CORP**  
BAFFIN ISLAND NUNAVUT  
Drawing  
**MILNE INLET**  
**FUEL FARM**  
**AS BUILT SECTIONS**

Date DEC 2007	CADD File Number milne InletFuel FarmAug100_06_05
Scale AS NOTED	Job Number <b>07-039</b>
Drawn AB	Drawing Number <b>100_06_05</b>
Checked	
Approved	



**SITE PLAN - RUNWAY LIGHTING**  
SCALE 1:1250

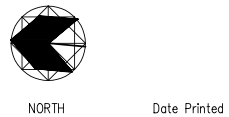


This Drawing is an instrument of service and shall remain the property of B.H. Martin Consultants Ltd. It shall not be reproduced or copied in any form. It shall not be used for the construction, enlargement or alteration of a building other than the said project without the authorization of the ARCHITECT and/or ENGINEER.

Contractors shall verify and be responsible for all dimensions and conditions on the job and report any discrepancies to the Architect and/or Engineer before proceeding with the work.

Drawings shall not be scaled.

REVISIONS: NEW SITE PLAN	JULY 31/07	2
ISSUED FOR CONSTRUCTION	JULY 13/07	1
ISSUED FOR TENDERS	MAY 25/07	0
Description	Date	No.
Revisions and Issues		



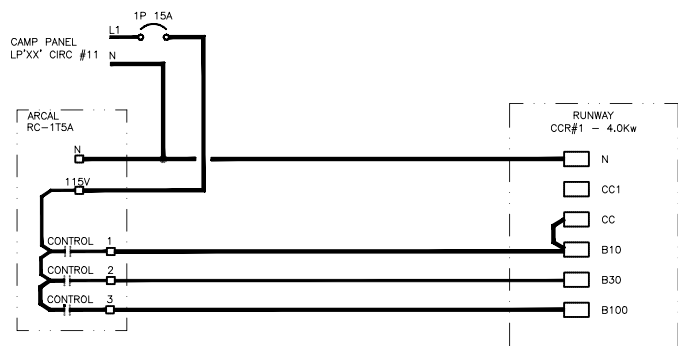
**B.H. MARTIN CONSULTANTS LTD.**  
Consulting Engineers and Architect  
Timmins Ontario  
www.bhmartin.com

ARCHITECT STRUCTURAL/CIVIL

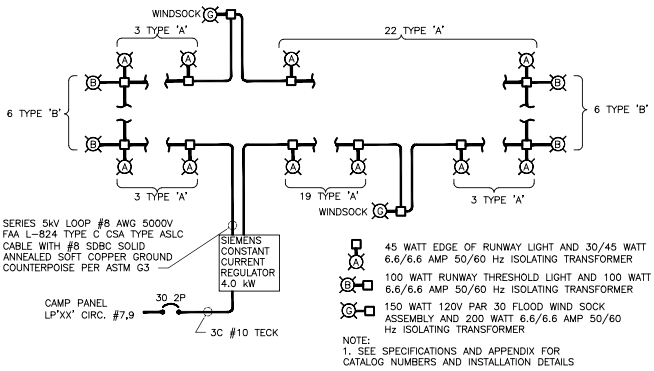
MECHANICAL ELECTRICAL

Project  
**BAFFINLAND MINE  
MILNE INLET SITE**  
Drawing  
**AIRPORT LIGHTING SITE  
PLAN,  
SECTIONS AND DETAILS**

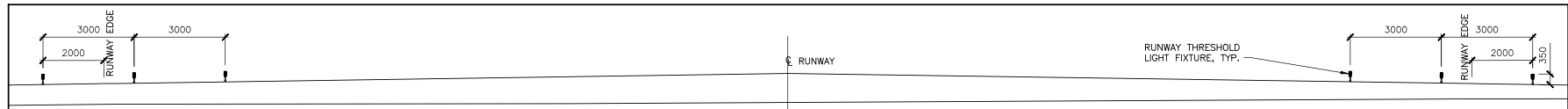
Date <b>MAY 2007</b>	CADD File Number <b>07039elec100-03-01</b>
Scale <b>AS NOTED</b>	Job Number <b>06-090</b>
Drawn <b>MEB</b>	Drawing Number <b>100-03-01</b>
Checked <b>MEB/NRL</b>	
Approved <b>NRL</b>	



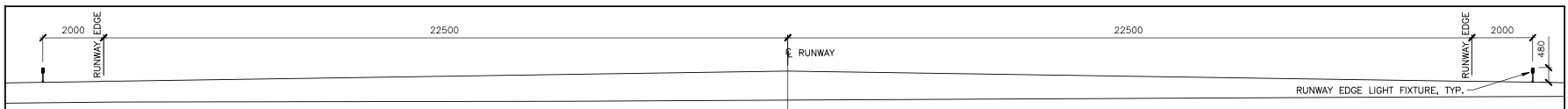
**CCR CONTROL SCHEMATIC**  
NO SCALE



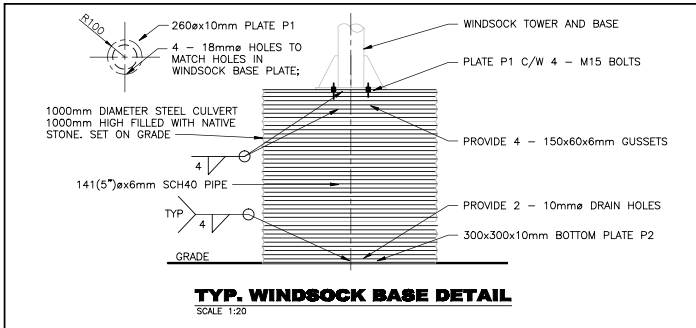
**RUNWAY LIGHTING BLOCK DIAGRAM**  
NO SCALE



**RUNWAY SECTION @ THRESHOLD LIGHTS**  
SCALE 1:100

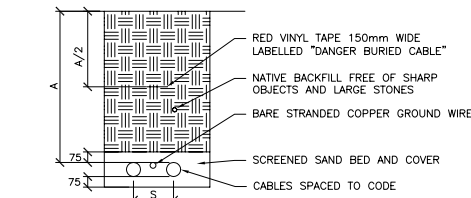


**RUNWAY SECTION @ EDGE LIGHTS**  
SCALE 1:100



**TYP. WINDSOCK BASE DETAIL**  
SCALE 1:20

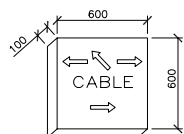
TYPE	DESCRIPTION	LAMPS
A	RUNWAY EDGE FIXTURE, SEE SPECS & APPENDIX	
B	RUNWAY END FIXTURE, SEE SPECS & APPENDIX	
G	WINDSOCK FIXTURE & ASSEMBLY, SEE SPECS & APPENDIX	1-100W 6.6A HALOGEN
H	AREA LIGHT WITH TYPE 3 DISTRIBUTION, CUTOFF REFLECTOR, HOUSESIDE SHIELD, CLEAR FLAT LENS AND MOUNTING BRACKETS. 25' POLE, 4" STEEL ROUND POLE WITH HANDHOLE AT 1800MM FROM BASE. 208V, LITHONIA KSF2 400M R3 208 XXX KSF_HS CSA	1-400W MH



S- SPACING TO ELECTRICAL SAFETY CODE TO MAINTAIN AMPACITY AND CLEARANCE BETWEEN SYSTEMS.  
A- MINIMUM COVER REQUIREMENTS FOR DIRECT BURIAL CONDUCTORS, CABLES OR RACEWAYS.

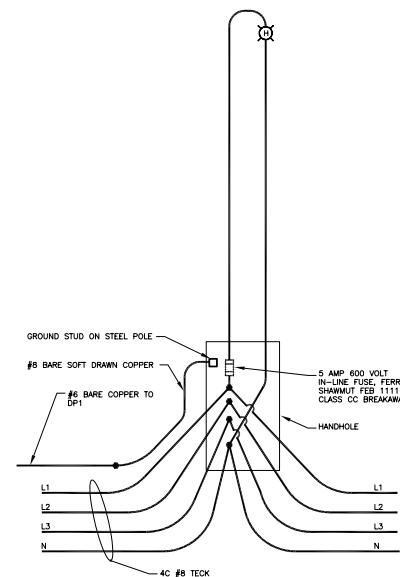
WIRING METHOD	MINIMUM COVER (mm)			
	NON-VEHICULAR AREAS	VEHICULAR AREAS	750 V OR LESS	OVER 750 V
CONDUCTORS OR CABLES NOT HAVING A METAL SHEATH OR ARMOUR	600	750	900	1000
CONDUCTOR OR CABLES HAVING A METAL SHEATH OR ARMOUR	450	750	600	1000
RACEWAY (PVC CONDUIT)	450	750	600	1000

TABLE HAS BEEN REPRODUCED FROM TABLE 53 OF THE ONTARIO ELECTRICAL SAFETY CODE. LATEST EDITION OF THE SAFETY CODE SHOULD BE CONSULTED.  
**LOW VOLTAGE TRENCH DETAIL**  
N.T.S.

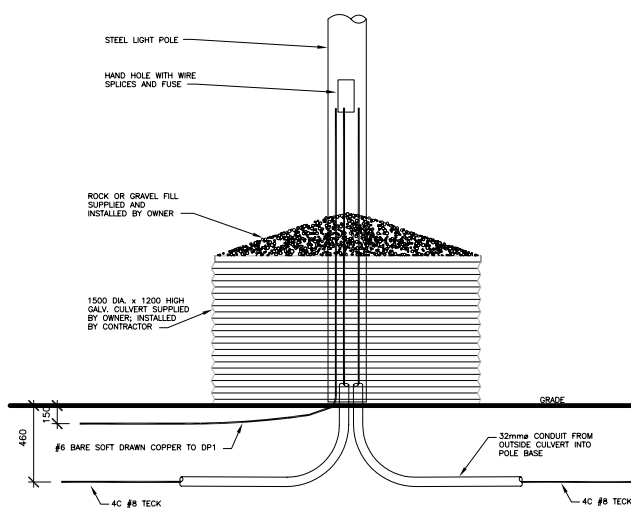


1. THE WORD CABLE, CONDUIT OR JOINT, AS REQUIRED SHALL BE LOCATED IN THE CENTER OF THE TOP FACE OF THE MARKER, AND THE INDICATING ARROWS LOCATED ABOVE THE WORD FOR A STRAIGHT RUN, OR ABOVE AND BELOW FOR A CHANGE IN DIRECTION. SEE BROKEN LINE ARROWS ABOVE.
  2. THE ARROWS SHALL BE 100mm IN LENGTH AND THE WORDS SHALL BE 100mm HIGH. BOTH THE LETTERS AND THE ARROWS SHALL HAVE A STROKE 13mm WIDE AND 13mm DEEP.
  3. THE MARKER SHALL BE MADE TO DIMENSIONS SHOWN AND CONSTRUCTED OF REINFORCED CONCRETE.
  4. THE REINFORCING SHALL CONSIST OF #6 GAUGE STANDARD 153mm x 153mm STEEL WIRE MESH, OR EQUAL.
- CONCRETE MARKER DETAIL**  
N.T.S.

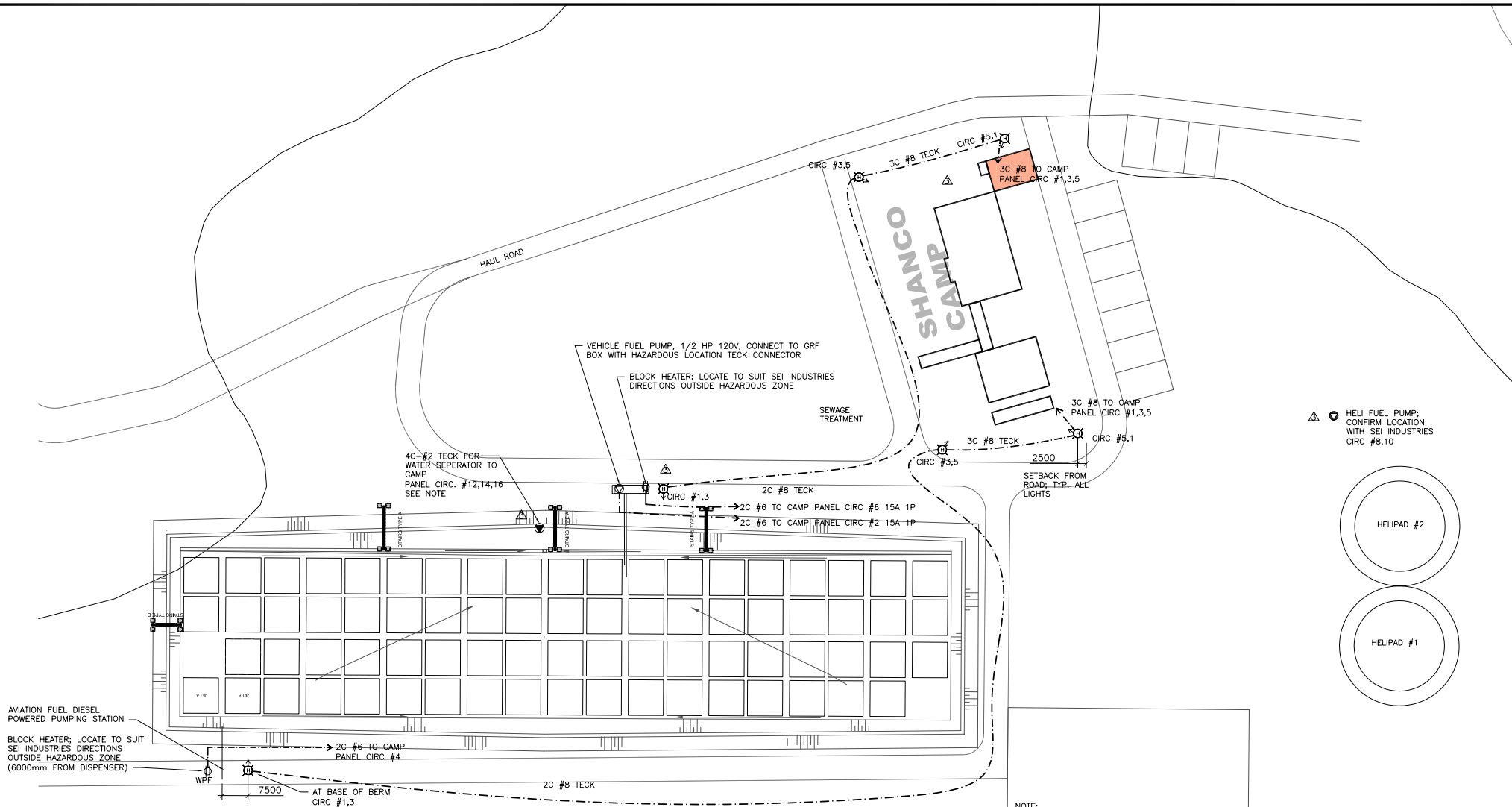
LIGHT FIXTURE SCHEDULE		
TYPE	DESCRIPTION	LAMPS
A	RUNWAY EDGE FIXTURE, SEE SPECS & APPENDIX	
B	RUNWAY END FIXTURE, SEE SPECS & APPENDIX	
G	WINDSOCK FIXTURE & ASSEMBLY, SEE SPECS & APPENDIX	1-100W 6.6A HALOGEN
H	AREA LIGHT WITH TYPE 3 DISTRIBUTION, CUTOFF REFLECTOR, HOUSESIDE SHIELD, CLEAR FLAT LENS AND MOUNTING BRACKETS. 25" POLE, 4" STEEL ROUND POLE WITH HANDHOLE AT 1800MM FROM BASE. 208V. LITHONIA KSF2 400M R3 208 XXX KSF_HS CSA	1-400W MH



**TYP. WIRING DIAGRAM FOR AREA LIGHTS**

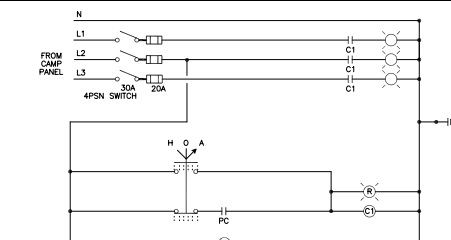


**TYP. BASE DETAIL FOR AREA LIGHTS**  
N.T.S.



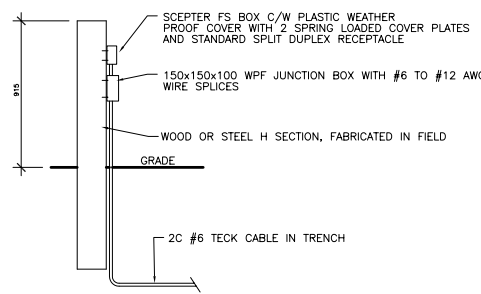
**SITE PLAN**  
SCALE 1:750

- NOTE:**
1. ALL CIRCUITS SHALL BE FED FROM LP'XX'. AT TIME OF TENDER THE LOCATION OF LP'XX' IS NOT KNOWN. THIS CONTRACTOR SHALL ASSUME THE PANEL WILL BE AT THE FURTHEST LOCATION FROM THE LOADS IN DETERMINING ESTIMATED CABLE/TRENCH LENGTHS.
  2. A WATER SEPARATOR WILL BE LOCATED AT MID POINT OF THE FUEL FARM, ON THE EAST SIDE, NORTH OF THE FUELING PUMPS. THIS SEPARATOR IS PORTABLE AND WILL PLUG INTO A POWER SUPPLY LOCATED AT THE BOTTOM OF THE BERM. FROM THE PANEL IN THE CAMP PROVIDE A 40 AMP 3 POLE BREAKER AND #2 TECK FEEDER UNDERGROUND TO THE PLUG IN LOCATION. PROVIDE AN APPLETON JBR SERIES SWITCHED RECEPTACLE #JBR6034-150 AND A MATING PLUG. APPLETON CPH 8034 BG MOUNT THE RECEPTACLE AT 1200MM ABOVE GRADE TO BOTTOM ON A WOOD BACKBOARD MADE UP OF TWO 100 X 100MM TREATED TIMBERS SET 1200 MM INTO THE GROUND, OR TO PERMAFROST, AND SPACED 304MM APART. FASTEN A 60MM WIDE TREATED 19MM THICK TREATED PLYWOOD ACROSS THE TWO 100 X 100 POSTS. FASTEN THE RECEPTACLE TO THE PLYWOOD PANEL. TERMINATE THE 4 CONDUCTOR TECK IN THE RECEPTACLE WITH EXPLOSION PROOF TECK CONNECTOR. TURN THE PLUG-IN OVER TO SIE INDUSTRIES WHO WILL FIT IT TO THEIR EXTENSION CORD FROM THE PORTABLE SEPARATOR.



PC - PARAGON TL 201-50 C/W TB BRACKET AND SOCKET OR EQUAL  
C1 - CONTRACTOR 50 AMP 3 POLE 208 VOLT HAND OFF AUTO SELECTOR SWITCH  
AND RED PILOT NEMA1 ENCLOSURE 208-120 VOLT CCT

**STREET LIGHTING CONTROL SCHEMATIC**  
N.T.S.



**BLOCK HEATER PEDESTAL AT RE-FUEL STATION**  
N.T.S.

**LEGEND**

- ⊗ LIGHT FIXTURE, TYPE AS NOTED
- ⊕ DUPLEX RECEPTACLE
- ⊙ 120V SPECIAL RECEPTACLE OR DIRECT CONNECTION TO EQUIPMENT
- ⊙ 208V SPECIAL RECEPTACLE OR DIRECT CONNECTION TO EQUIPMENT

PANELBOARD SCHEDULE (three phase)									
LOAD	SERVICE	BRK	CT	A	B	C	CT	BRK	SERVICE
2700	Flood Lights	153P	3	*	*	*	2	151P	Vehicle Fuel Pump
			5	*	*	*	6	151P	Block Heater Plug AV Fuel
4000	Runway Lighting Constant Current Regulator	202P	7	*	*	*	8	202P	Block Heater Plug Vehicle Fuel
500	Runway ARCAL Controller	151P	11	*	*	*	12	403P	Heli Fuel Pump
			13	*	*	*	14		Water Separator
			15	*	*	*	16		
			17	*	*	*	18		
			19	*	*	*	20		
			21	*	*	*	22		
			23	*	*	*	24		
			25	*	*	*	26		
			27	*	*	*	28		
			29	*	*	*	30		
			31	*	*	*	32		
			33	*	*	*	34		
			35	*	*	*	36		
			37	*	*	*	38		
			39	*	*	*	40		
			41	*	*	*	42		
7200	TOTAL CONNECTED LOAD =		22333 VA				62.0 AMPS		15133

**NOTE:**  
LP'XX' WILL BE PROVIDED WITH THE CAMP. BREAKER ARRANGEMENT AND PANEL DESIGNATION WILL BE DIFFERENT FROM THAT SHOWN. BREAKERS WILL BE PROVIDED WITH THE PANEL BY THE CAMP SUPPLIER

This Drawing Is an Instrument of service and shall remain the property of B.H. Martin Consultants Ltd. It may not be reproduced or copied in any form. It shall not be used for the construction, enlargement or alteration of a building other than the said project without the authorization of the ARCHITECT and/or ENGINEER.

Contractors shall verify and be responsible for all dimensions and conditions on the job and report any discrepancies to the Architect and/ or Engineer before proceeding with the work.

Drawings shall not be scaled.

ADDENDUM #1, NEW SITE PLAN	JULY 31/07	3
REVISION OF FIXTURE H	JULY 25/07	2
ISSUED FOR CONSTRUCTION	JULY 13/07	1
ISSUED FOR TENDERS	MAY 25/07	0
Description	Date	No.
Revisions and Issues		



NORTH

Date Printed



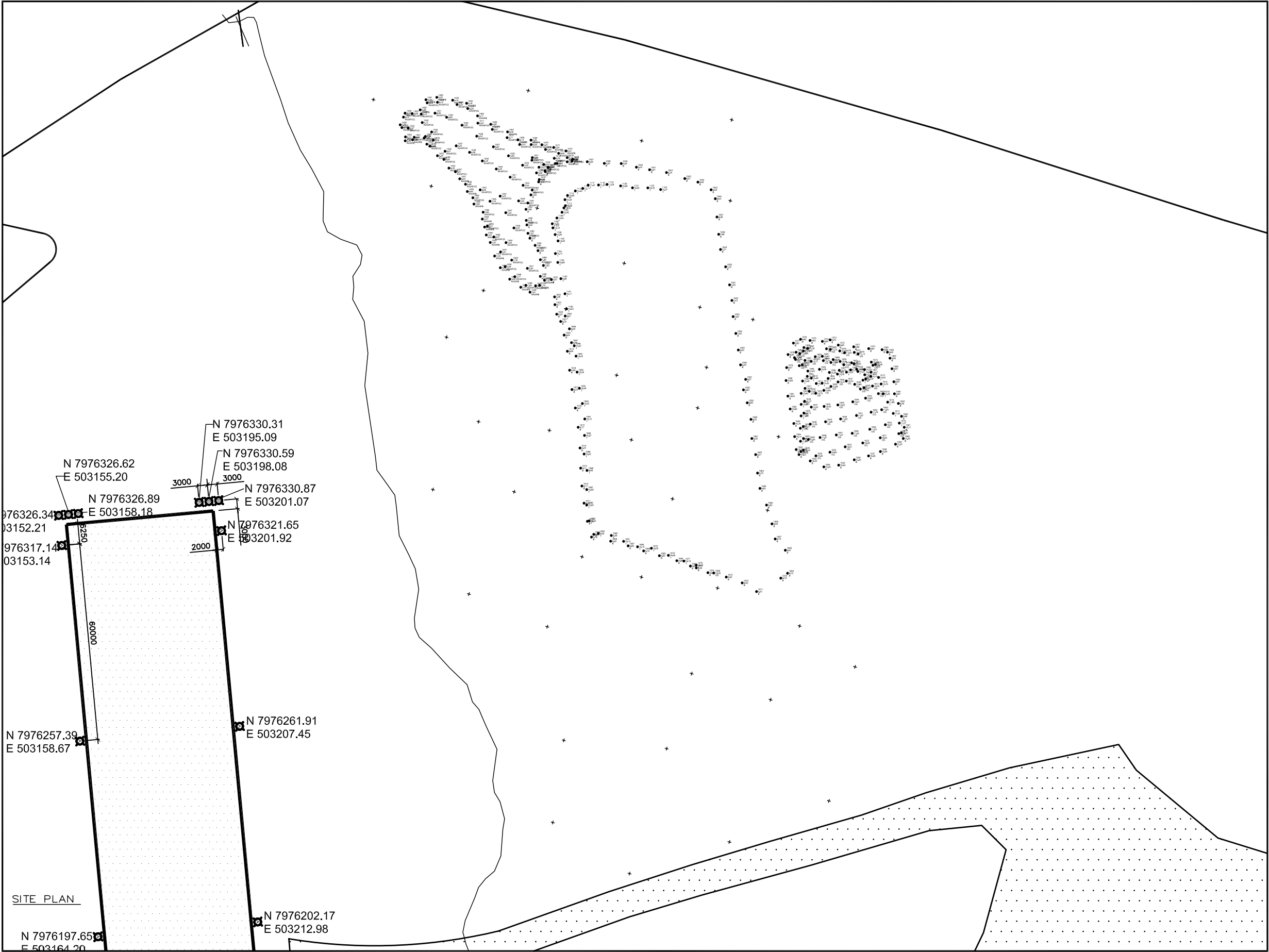
**B.H. MARTIN CONSULTANTS LTD.**  
Consulting Engineers and Architect  
Timmins Ontario  
www.bhmartin.com

ARCHITECT STRUCTURAL/CIVIL

MECHANICAL ELECTRICAL

Project  
**BAFFINLAND MINE MILNE INLET**  
BAFFIN ISLAND NUNAVUT  
Drawing  
**FUEL FARM LIGHTING & POWER SITE PLAN AND DETAILS**

Date	CADD File Number
MAY 2007	07039...100_03_02
Scale	Job Number
AS NOTED	<b>07-039</b>
Drawn	
RSP	
Checked	Drawing Number
NRL	<b>100_03_02</b>
Approved	
NRL	



This Drawing is an instrument of service and shall remain the property of B.H. Martin Consultants Ltd. It may not be reproduced or copied in any form. It shall not be used for the construction, enlargement or alteration of a building other than the said project without the authorization of the ARCHITECT and/or ENGINEER.

Contractors shall verify and be responsible for all dimensions and conditions on the job and report any discrepancies to the Architect and/or Engineer before proceeding with the work.

Drawings shall not be scaled.

Description	Date	No.
Revisions and Issues		



NORTH Date Printed



B.H. MARTIN CONSULTANTS LTD.  
Consulting Engineers and Architect  
Timmins Ontario  
www.bhmartin.com

ARCHITECT STRUCTURAL/CIVIL

MECHANICAL ELECTRICAL

Project  
MILNE INLET  
MARY-RIVER NUNAVUT  
Drawing  
ORE SAMPLE PAD  
CONTOURS

Date NOV 2007	CADD File Number CIVIL/SURV/MILNE/C01
Scale 1:500	Job Number 07-039
Drawn AB	Drawing Number C01
Checked	
Approved	