

**RECEIVED**

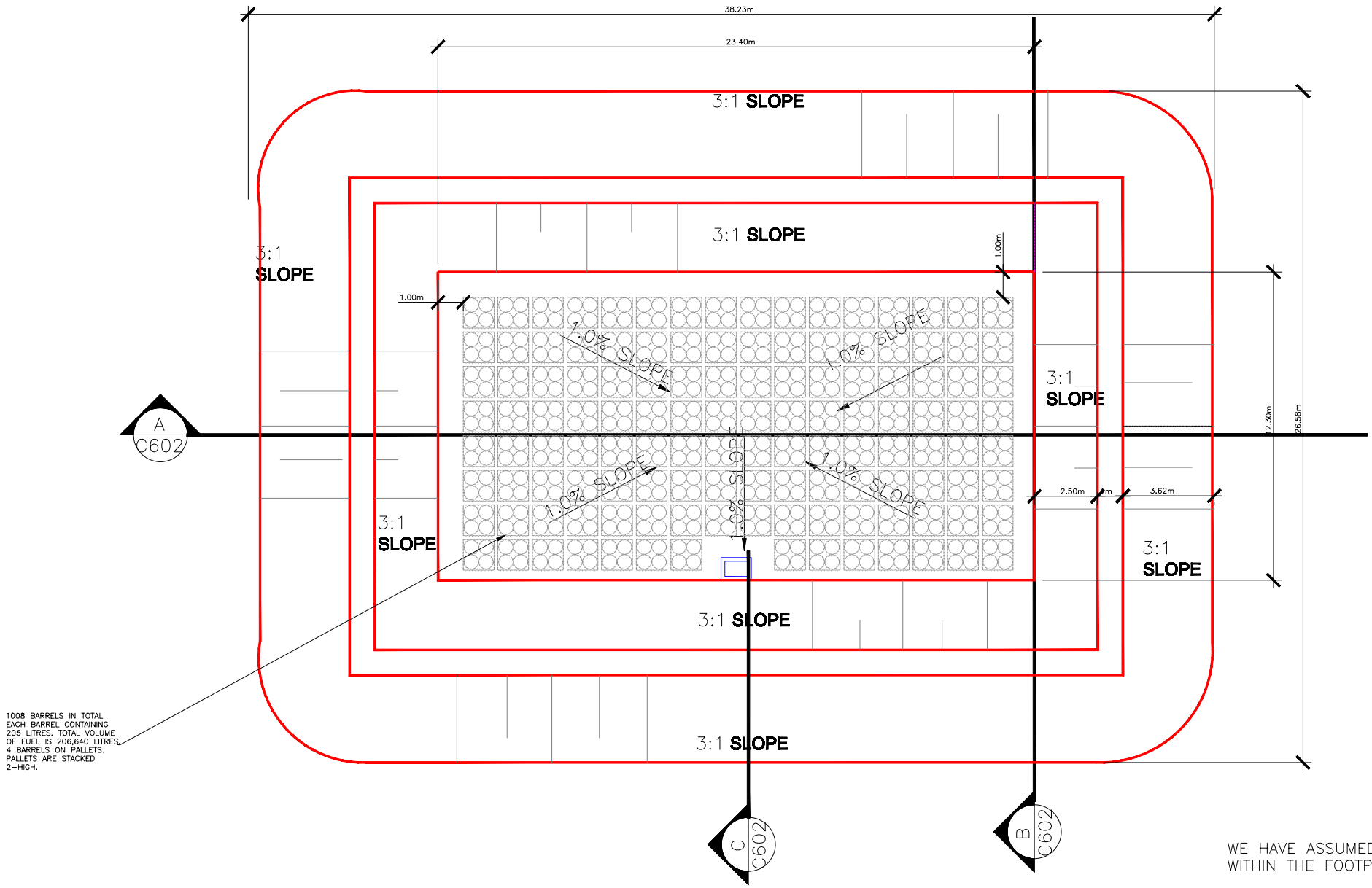
*By Richard Dwyer at 5:19 pm, Mar 31, 2011*

**2011 ABANDONMENT AND RECLAMATION PLAN**

**Appendix B-3**

**Steensby Inlet**

*(Included with Electronic Version Only)*

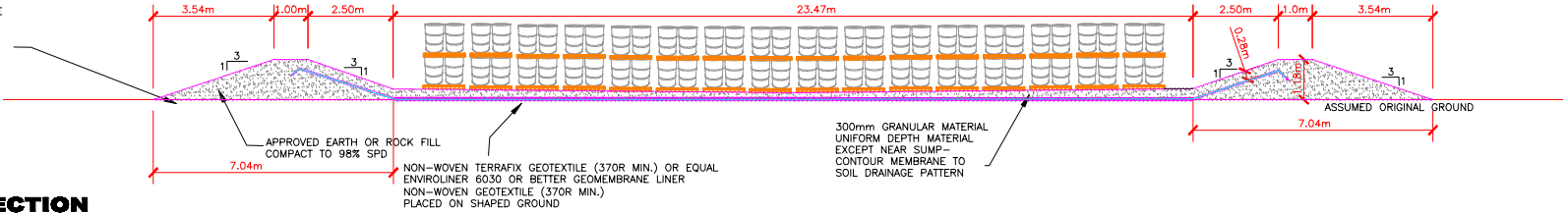


1008 BARRELS IN TOTAL  
EACH BARREL CONTAINING  
205 LITRES. TOTAL VOLUME  
OF FUEL IS 206,640 LITRES.  
4 BARRELS ON PALLET.  
PALLET ARE STACKED  
2-HIGH.

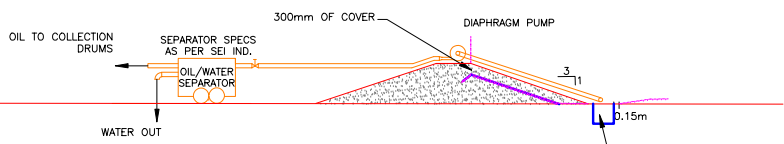
WE HAVE ASSUMED THE ORIGINAL GROUND TO BE FLAT  
WITHIN THE FOOTPRINT OF THE CONTAINMENT.

IF THE ORIGINAL GROUND ELEVATION VARIES FROM ONE  
END TO THE OTHER, THE MINIMUM HEIGHT OF THE  
BERMS AND THE MINIMUM DEPTH OF THE CONTAINMENT  
WILL STILL HAVE TO BE MAINTAINED.

STRIP TOPSOIL AND REMOVE UNSUITABLE  
MATERIALS.  
PROOF ROLL SUB BASE AT GRADES  
SHOWN WHICH ARE VERY CLOSE TO  
ORIGINAL GROUND.  
SUB GRADE TO BE APPROVED BY  
GEOTECHNICAL ENGINEER

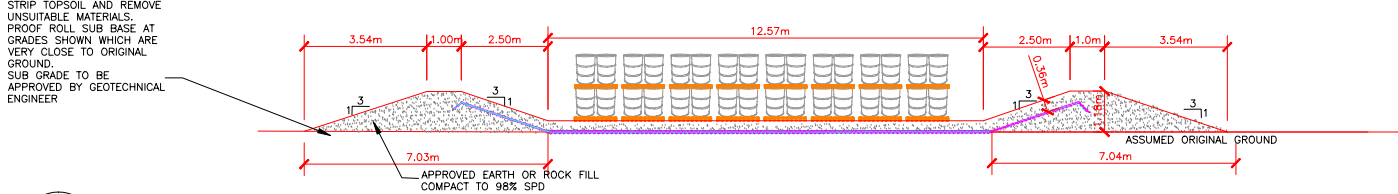


**CROSS-SECTION**  
A  
C502



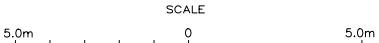
**SUMP DETAIL**  
C  
C502

STRIP TOPSOIL AND REMOVE  
UNSUITABLE MATERIALS.  
PROOF ROLL SUB BASE AT  
GRADES SHOWN WHICH ARE  
VERY CLOSE TO ORIGINAL  
GROUND.  
SUB GRADE TO BE  
APPROVED BY GEOTECHNICAL  
ENGINEER



**CROSS-SECTION**  
B  
C502

MINIMUM LINER REQUIREMENTS NOT INCLUDING  
SUMP AND FUEL LOADING AREA:  
LINER LENGTH = 31.1m OR 102 FEET  
LINER WIDTH = 18.6m OR 62.0 FEET



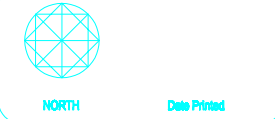
This Drawing is an instrument of service and shall remain the property of B.H. Martin Consultants Ltd. It may not be reproduced or copied in any form. It shall not be used for the construction, enlargement or alteration of a building other than the said project without the authorization of the ARCHITECT and/or ENGINEER.

Contractors shall verify and be responsible for all dimensions and conditions on the job and report any discrepancies to the Architect and/or Engineer before proceeding with the work.

Drawings shall not be scaled.

THE POSITION OF POLE LINES, CONDUITS, WATERMANS, SEWERS, AND OTHER UNDERGROUND AND OVERGROUND UTILITIES AND STRUCTURES IS NOT NECESSARILY SHOWN ON THIS DRAWING AND WHERE SHOWN, THE ACCURACY OF THE POSITION OF SUCH UTILITIES AND STRUCTURES IS NOT GUARANTEED. BEFORE STARTING WORK, THE CONTRACTOR SHALL INFORM HIMSELF OF ALL SUCH UTILITIES AND STRUCTURES AND SHALL ASSUME ALL LIABILITY FOR DAMAGE TO THEM.

ISSUED FOR CONSTRUCTION	July 03, 2007	1
ISSUED FOR TENDER/REVIEW	Mar. 26, 2007	0
Description	Date	No.
Revisions and Issues		



B.H. MARTIN CONSULTANTS LTD.  
Consulting Engineers and Architect  
Timmins Ontario  
www.bhmartin.com

ARCHITECT STRUCTURAL/CIVIL

MECHANICAL ELECTRICAL

Project  
MARY RIVER PROJECT  
BAFFINLAND  
IRON ORE MINES  
BAFFIN ISLAND, NUNAVUT

Drawing  
STEENSBY INLET CAMP  
FUEL BARREL FARM  
SECTION AND DETAILS

Date MAR 2006	CADD File Number System: Fuel_Farm_2006_06_11
Scale 1:100	Job Number 06-090
Drawn MIK	Drawing Number 200_06_11
Checked MIK	
Approved	