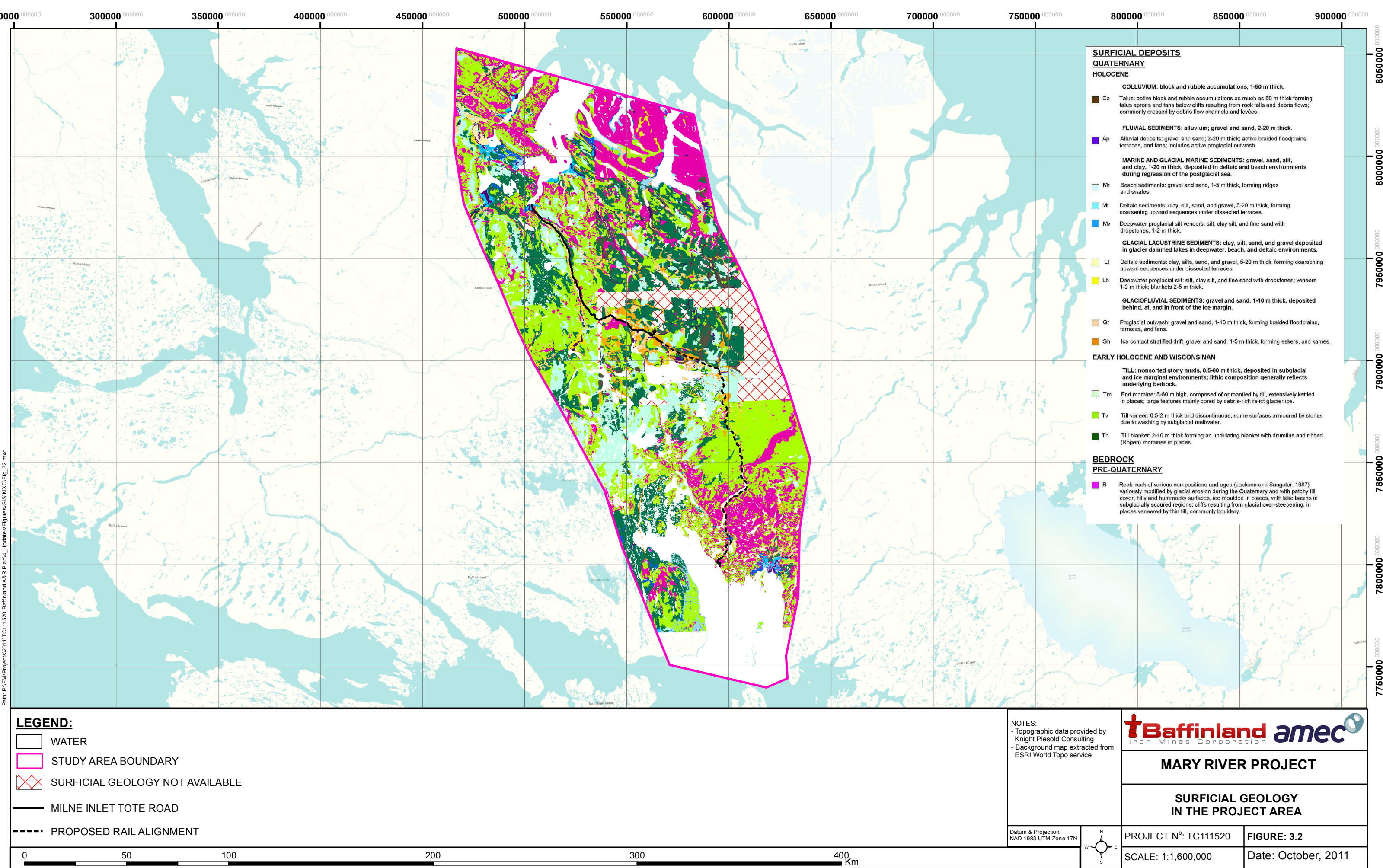


Path: P:\ENM\Projects\2011\TC111520 Baffinland A&R Plan\4_Updates\Figures\GIS\MXD\Fig_32.mxd



SURFICIAL DEPOSITS

QUATERNARY

HOLOCENE

COLLUVIUM: block and rubble accumulations, 1-50 m thick.

Ca Talus: active block and rubble accumulations as much as 50 m thick forming talus aprons and fans below cliffs resulting from rock falls and debris flows; commonly crossed by debris flow channels and leveés.

FLUVIAL SEDIMENTS: alluvium; gravel and sand, 2-20 m thick.

Ap Alluvial deposits: gravel and sand; 2-20 m thick; active braided floodplains, terraces, and fans; includes active proglacial outwash.

MARINE AND GLACIAL MARINE SEDIMENTS: gravel, sand, silt, and clay, 1-20 m thick, deposited in deltaic and beach environments during regression of the postglacial sea.

Mr Beach sediments: gravel and sand, 1-5 m thick, forming ridges and swales.

Mt Deltaic sediments: clay, silt, sand, and gravel, 5-20 m thick, forming coarsening upward sequences under dissected terraces.

Mv Deepwater proglacial silt veneers: silt, clay silt, and fine sand with dropstones, 1-2 m thick.

GLACIAL LACUSTRINE SEDIMENTS: clay, silt, sand, and gravel deposited in glacier dammed lakes in deepwater, beach, and deltaic environments.

Lt Deltaic sediments: clay, silts, sand, and gravel, 5-20 m thick, forming coarsening upward sequences under dissected terraces.

Lb Deepwater proglacial silt: silt, clay silt, and fine sand with dropstones; veneers 1-2 m thick; blankets 2-5 m thick.

GLACIOFLUVIAL SEDIMENTS: gravel and sand, 1-10 m thick, deposited behind, at, and in front of the ice margin.

Gt Proglacial outwash: gravel and sand, 1-10 m thick, forming braided floodplains, terraces, and fans.

Gh Ice contact stratified drift: gravel and sand, 1-5 m thick, forming eskers, and kames.

EARLY HOLOCENE AND WISCONSINAN

TILL: nonsorted stony muds, 0.5-60 m thick, deposited in subglacial and ice marginal environments; lithic composition generally reflects underlying bedrock.

Tm End moraine: 5-60 m high, composed of or mantled by till, extensively kettled in places; large features mainly cored by debris-rich relict glacier ice.

Tv Till veneer: 0.5-2 m thick and discontinuous; some surfaces armoured by stones due to washing by subglacial meltwater.

Tb Till blanket: 2-10 m thick forming an undulating blanket with drumlins and ribbed (Rogen) moraines in places.

BEDROCK

PRE-QUATERNARY

R Rock: rock of various compositions and ages (Jackson and Sangster, 1987) variously modified by glacial erosion during the Quaternary and with patchy till cover; hilly and hummocky surfaces, ice moulded in places, with lake basins in subglacially scoured regions; cliffs resulting from glacial over-steepening; in places veneered by thin till, commonly bouldery.