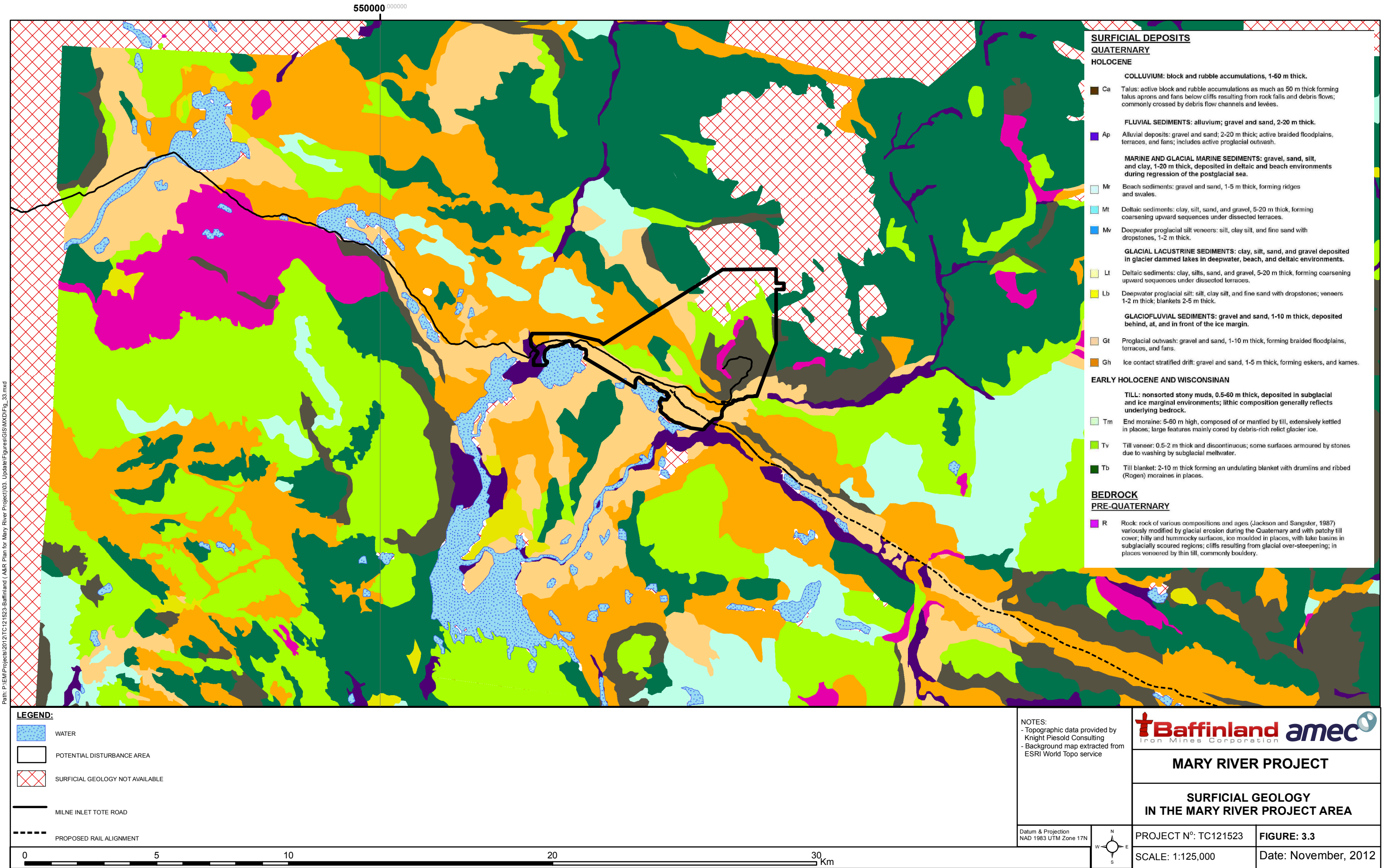
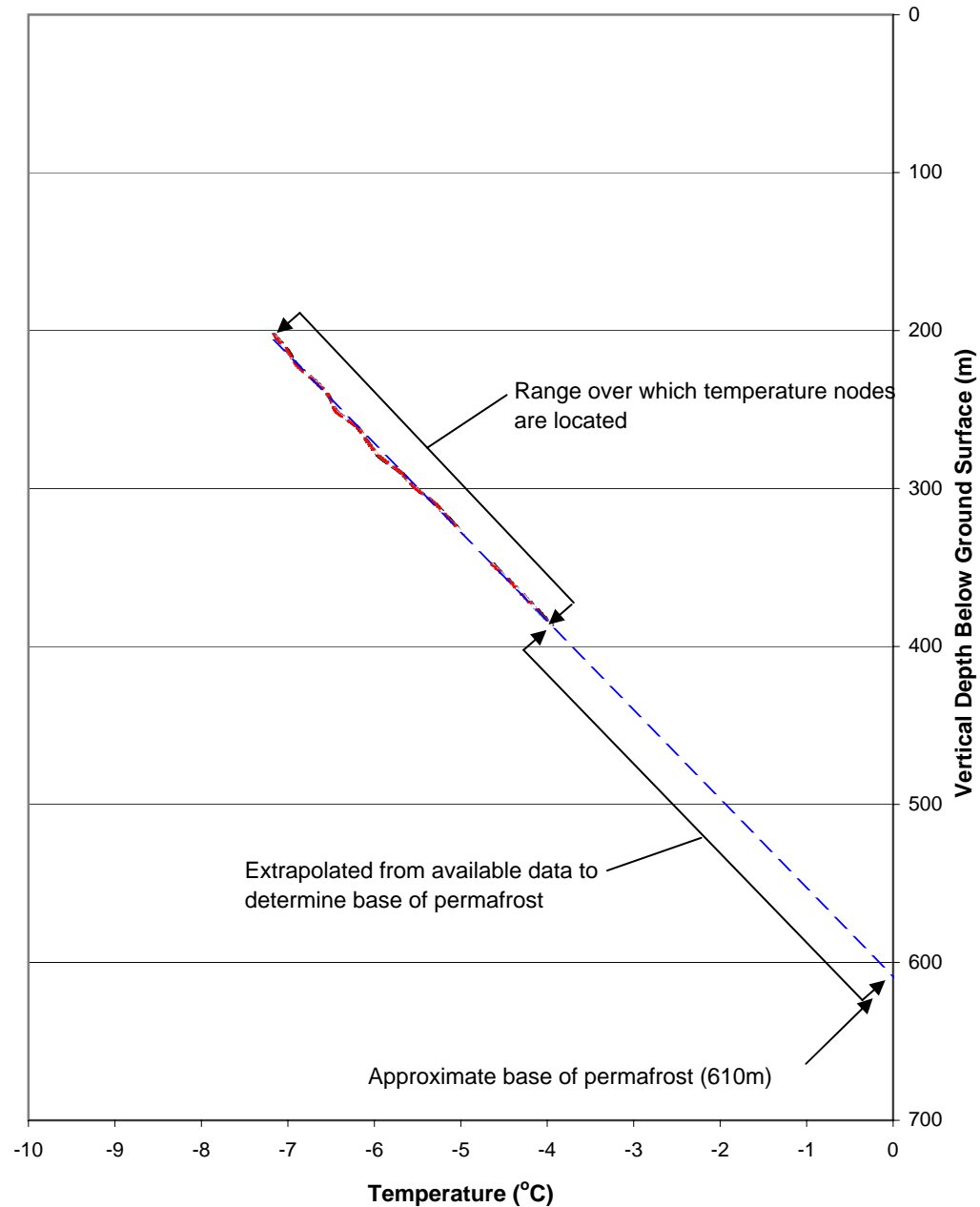


Path: P:\EWP\Projects\2012\TC121523-Baffinland (A&R Plan for Mary River Project)\03\_Update\Figures\GIS\MXD\Fig\_33.mxd



Notes:

1. DATA READINGS FROM AUGUST 25 - SEPTEMBER 25, 2007.
2. THERMISTOR READINGS WERE RECORDED BETWEEN DEPTH OF APPROXIMATELY 200 M AND 400 M BELOW THE GROUND SURFACE. TEMPERATURES ARE INTERPOLATED TO 610 M BELOW GROUND SURFACE.

BAFFINLAND IRON MINES CORPORATION

MARY RIVER PROJECT

**DEEP THERMISTOR TEMPERATURE RESULTS*****Knight Piésold***  
CONSULTINGP/A NO.  
NB102-181/29REF.  
1REV.  
0**FIGURE 3.4**