

LEGEND:

- River/Stream/Drainage
- Milne Inlet Tote Road
- Proposed Rail Alignment
- Contour
- Water
- Inuit Owned Land-Surface Only Excluding Minerals
- Inuit Owned Land-Surface and Subsurface Including Minerals
- Mineral Lease Boundary
- Crown Land

- Existing Borrow Area (IOL Commercial Lease)
- Existing Rock Quarry (IOL Commercial Lease)

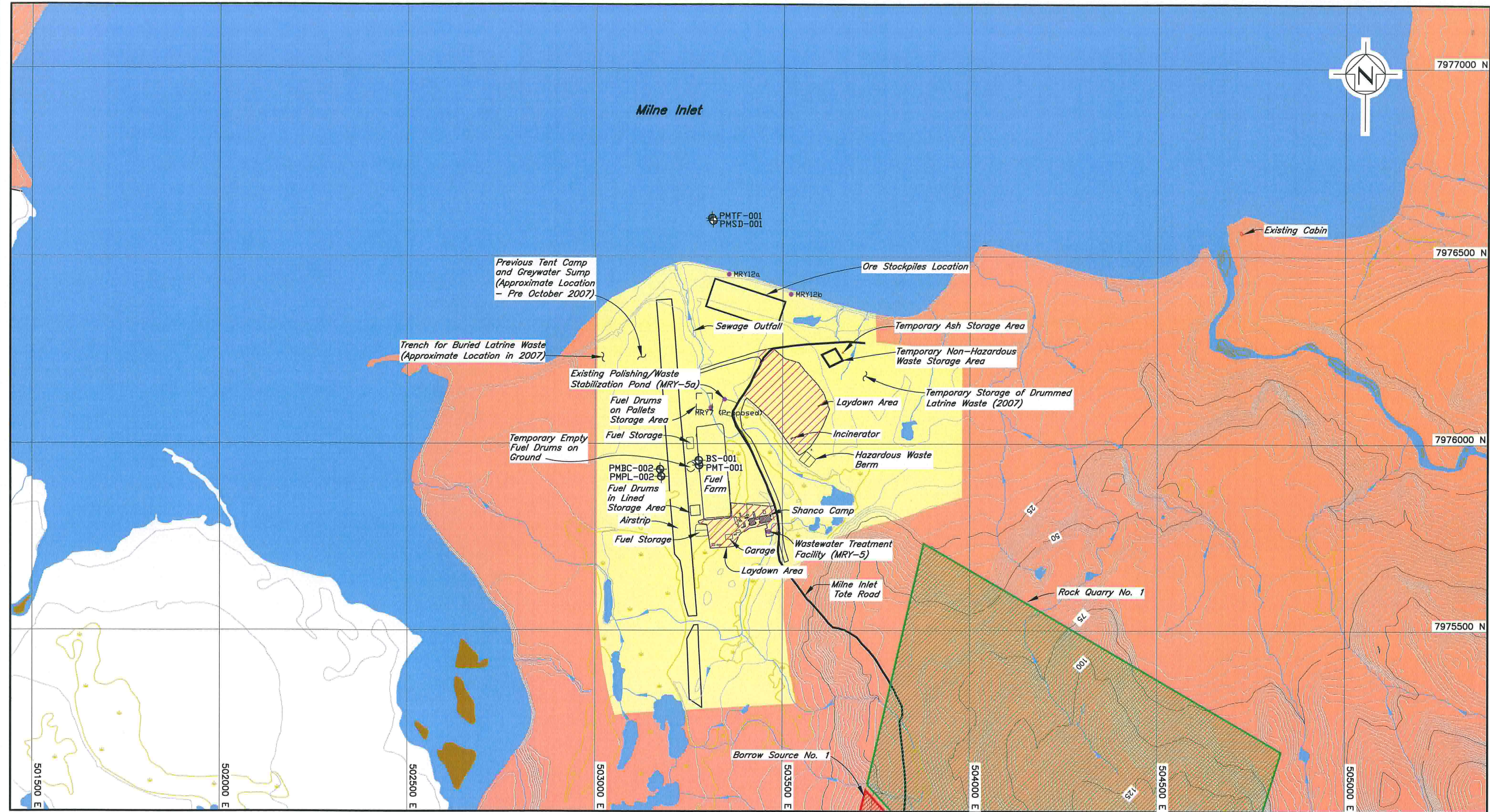
NOTES:

1. Base Map: © Her Majesty the Queen in Rights of Canada, Department of Natural Resources (2004). All rights reserved.
2. Coordinate grid is shown in UTM (NAD83) Zone 17 and is in metres.
3. Contours are in metres. Contour interval varies.
4. Proposed Rail Alignment provided by Canarail Consultants Inc. in late 2007.



MARY RIVER PROJECT			
LOCATION OF PROJECT ACTIVITIES			
		P/A NO. NB102-00181/10	REV. 1
		REF. 8	
FIGURE 1.1			

XREF FILE(S): Milne Inlet; Inuit Owned Lands Surface-Subsurface_REV1; Lakes hatched IMAGE FILE(S): Baffinland logo-big corp



LEGEND:

- | | | |
|--|---|---|
| Water | Surface Rights Area (IOL Commercial Lease) | Drillhole Completed in 2007 |
| Inuit Owned Land-Surface Only Excluding Minerals | Existing Borrow Area (IOL Commercial Lease) | River/Stream/Drainage |
| Crown Land | Existing Rock Quarry (IOL Commercial Lease) | Direction of surface water runoff |
| Laydown Area | Wetland | Milne Inlet Tote Road |
| | | Road |
| | | MRY-5 Water Licence Monitoring Location |

NOTES:

1. Topography provided by Eagle Mapping (2005).
2. Coordinate grid is shown in UTM (NAD83) Zone 17 and is in metres.
3. Contours are in metres. Contour interval is 2.5 metres.
4. Layout provided by BH Martin/Genivar and Baffinland (as of December 31, 2007).





MARY RIVER PROJECT			
MILNE INLET CAMP AND PORT LAYOUT			
		P/A NO. NB102-00181/10	REV. 1
		REF. 6	
FIGURE 1.2			

NORTH BAY ON. SAVED: I:\102-00181-10\Assignment\Map\Fig10170_3/31/2008 10:58:27 AM PRINTED: 3/31/2008 10:58:35 AM Layout1.rpt



LEGEND:

- *River/Stream/Drainage*
-  *Spill Kit*
-  *Tent*

NOTES:

1. *Airphotos provided by Eagle Mapping (2005) and ALS contour data provided by Terrapoint (2006).*
2. *Coordinate grid is shown in UTM (NAD83) Zone 17 and is in metres.*
3. *Contours are in metres. Contour interval is 1.5 metres.*
4. *Layout as of December 31, 2007 provided by BH Martin/Genivar and Baffinland.*

Scale  Metres

Baffinland
Lead Mines Development

MARY RIVER PROJECT

MARY RIVER SITE LAYOUT

Knight Piésold
CONSULTING

P/A NO. NB102-00181/10	REF. 6	REV. 1
---------------------------	-----------	-----------

FIGURE 1.3

NORTH BAY ON. SAVED: I:\102-00181-10\Assignment\Acad\Fig\B180, 3/31/2008 9:44:51 AM PRINTED: 3/31/2008 9:45:22 AM, Layout1, bport