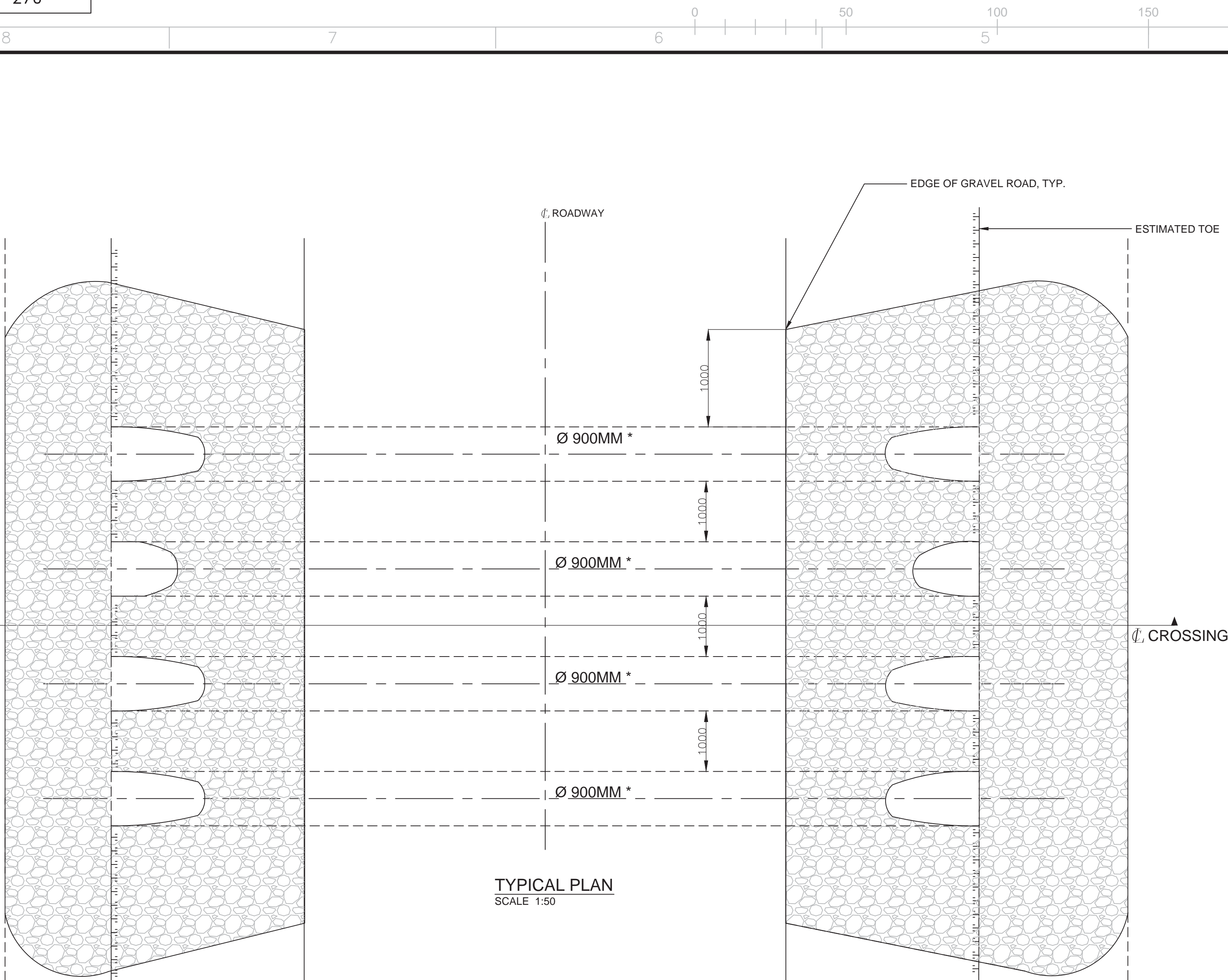


H
G
F
E
D
C
B
A



TYPICAL PLAN
SCALE 1:50

GENERAL

- ANY DESIGN CHANGES PROPOSED DURING CONSTRUCTION SHALL REQUIRE PRIOR WRITTEN APPROVAL FROM THE COORDINATING REGISTERED PROFESSIONAL.

HYDROLOGY AND HYDRAULIC ASSESSMENT

- THE EXTENT OF THE RIP RAP IS BASED ON AVAILABLE INFORMATION, THE EXTENTS SHOULD BE ADJUSTED IN THE FIELD TO ENSURE ADEQUATE SCOUR PROTECTION IS PROVIDED TO THE BRIDGE SUBSTRUCTURE AND ABUTMENTS.

CULVERT DESIGN

- CONFORM TO CAN/CSA-S6-06 (MODIFIED)
- DESIGN LIFE IS 45 YEARS

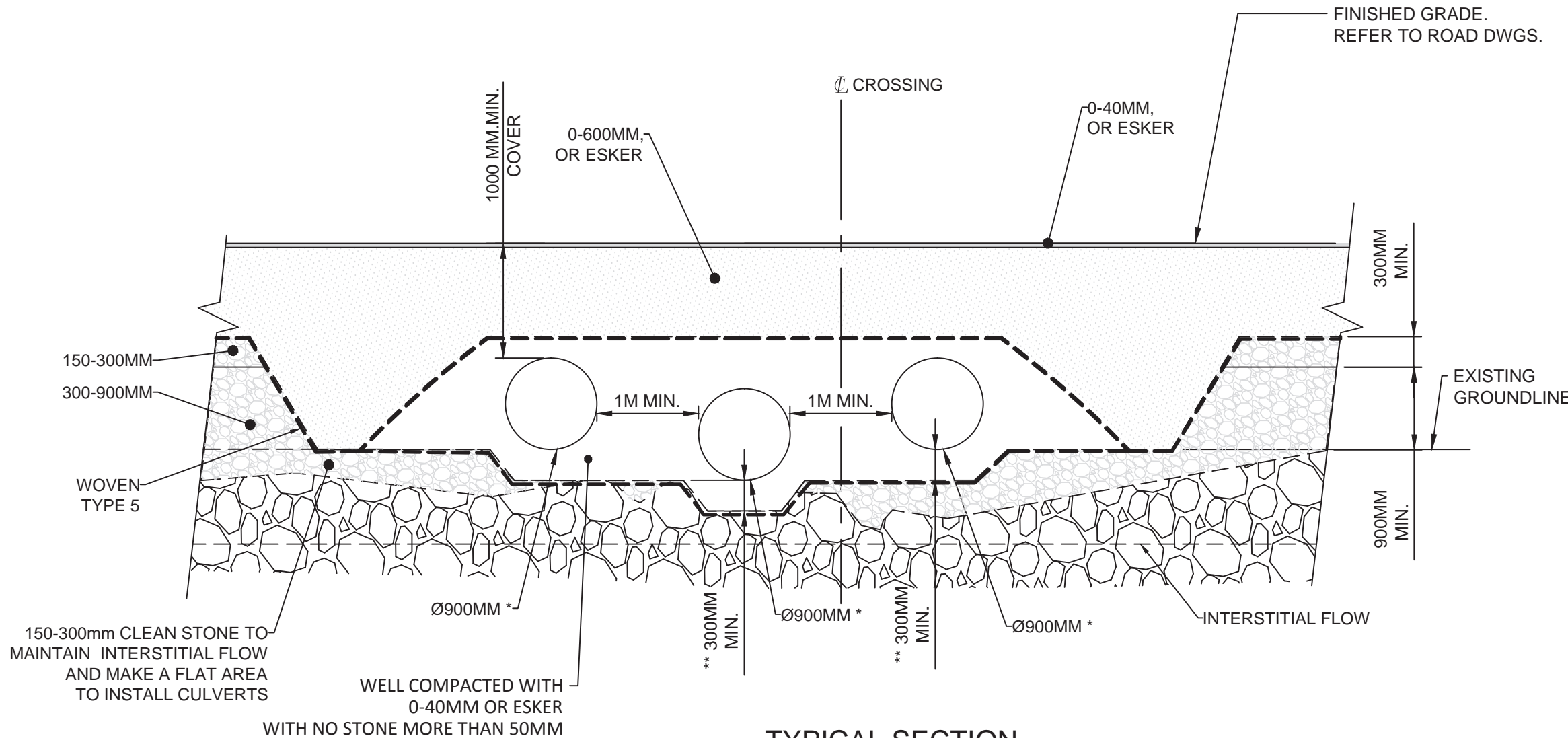
CULVERTS

- THE DESIGN SHOWS THE MINIMUM REQUIRED LENGTH & OPENING SIZE.
- THE CULVERT INSTALLATION, BEDDING & BACKFILL SHALL BE ADEQUATELY PROTECTED TO PREVENT SEEPAGE THAT WAY RESULT IN FAILURE OF THE ROAD EMBANKMENT.
- THE CULVERT INSTALLATION AND BACKFILL IN ACCORDANCE WITH MANUFACTURER'S SPECIFICATIONS.
- LOCATION TO BE CONFIRMED IN FIELD WITH COORDINATING REGISTERED PROFESSIONAL.
- D: DIAMETER

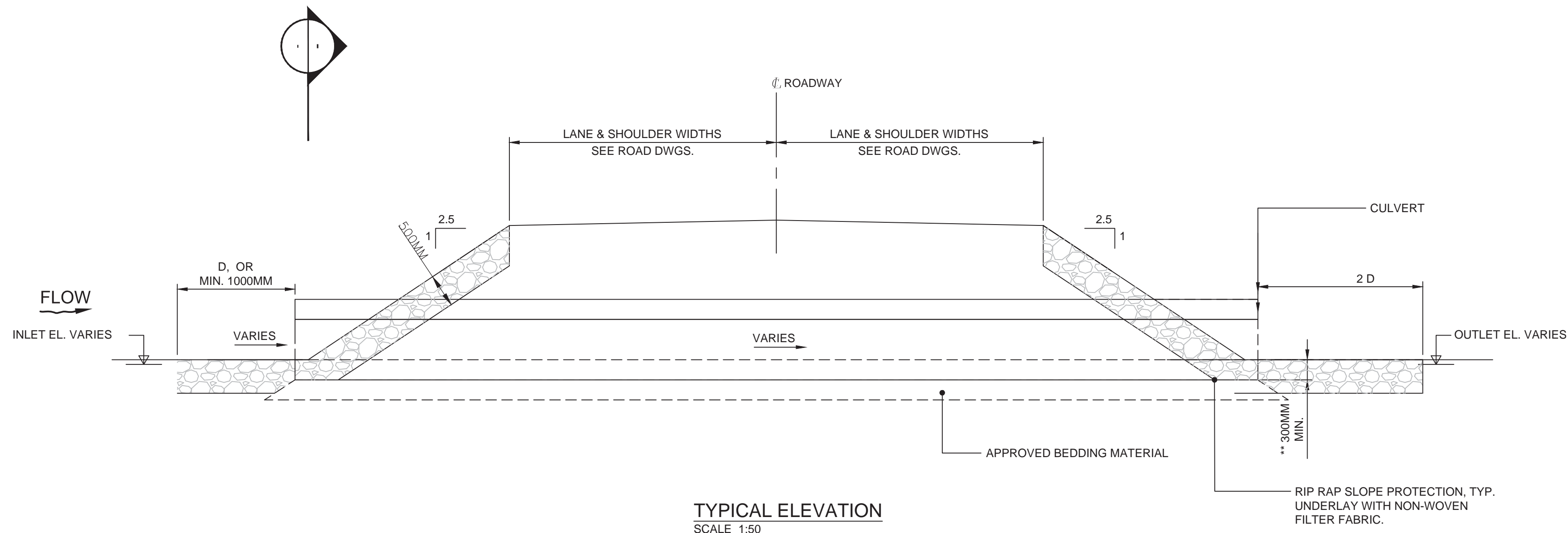
** WHERE GRAMINOID WATERCOURSES THAT ARE FISH HABITAT ARE CONVEYED SOLELY BY CULVERTS (I.E. THERE IS NO BRIDGE) - THE LOWEST CULVERT WILL BE EMBEDDED 300MM BELOW THE STREAM INVERT AND ADDITIONAL CULVERTS, IF REQUIRED, WILL BE EMBEDDED BY 10% OF THEIR DIAMETER.
WHERE CULVERTS ARE PLACED ON TOP OF BOULDER WATERCOURSES THAT ARE FISH HABITAT AND THERE IS NO BRIDGE, INTERSTITIAL FLOW WILL BE MAINTAINED AND THE LOWEST CULVERT WILL BE EMBEDDED 300MM BELOW THE TOP OF THE BOULDERS AND ADDITIONAL CULVERTS, IF REQUIRED, WILL BE PLACED ON TOP OF THE BOULDERS.
CULVERT WHERE THERE IS NOT FISH WILL BE EMBEDDED BY 10% OF THEIR DIAMETER FOR THE LOWEST.
* FOR CULVERTS DIAMETER AND QUANTITY : SEE PLAN AND PROFILE DRAWINGS.

MATERIALS

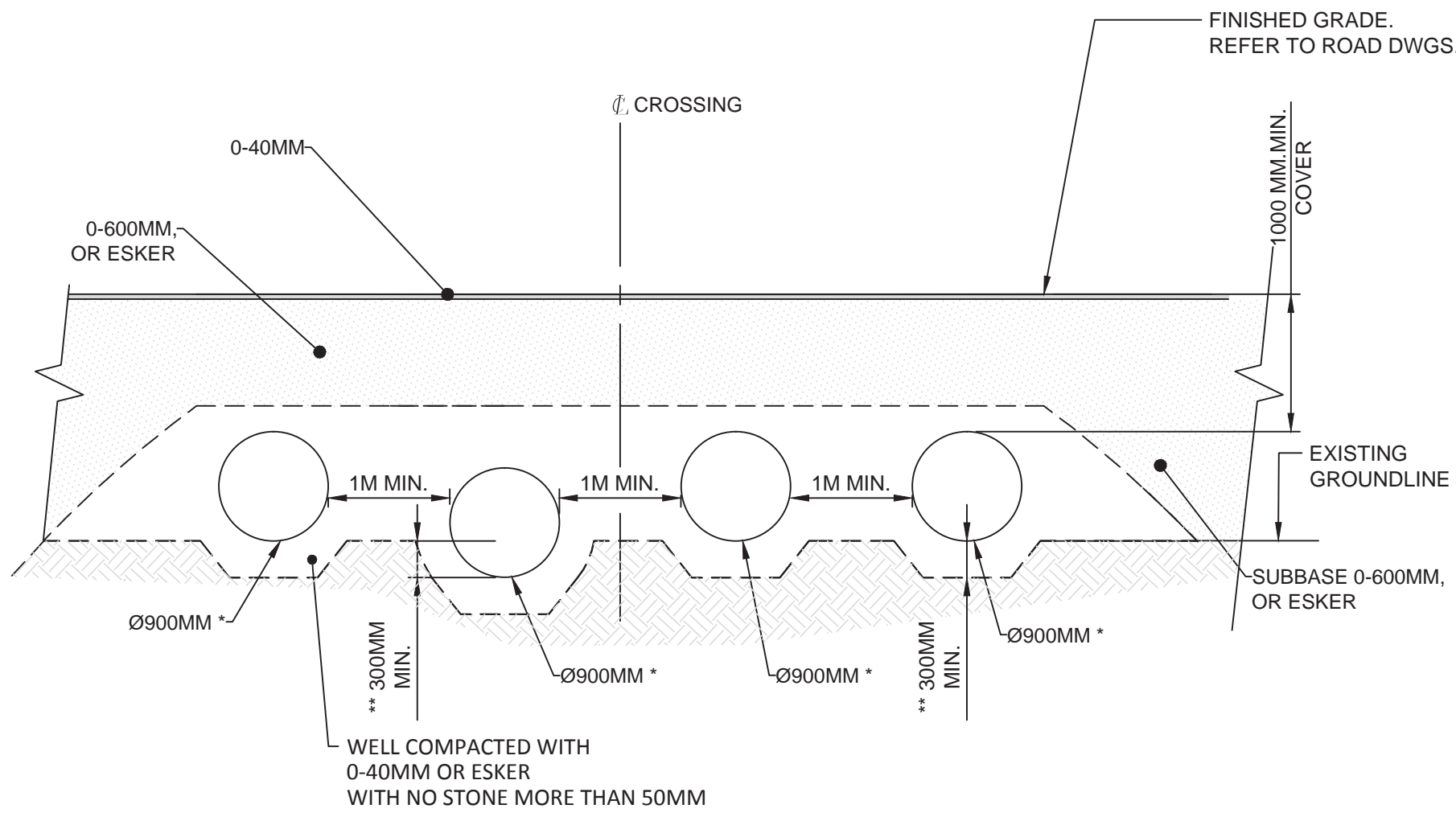
- CORRUGATED STEEL PIPE: CONFORM TO CSA G40.21M
PLATE: GRADE 350A (OTHER STRUCTURAL STEEL)



TYPICAL SECTION
SCALE 1:50
BOULDER CROSSING



TYPICAL ELEVATION
SCALE 1:50



TYPICAL SECTION
SCALE 1:50
GRAMINOID CROSSING

PLAN CLE
KEY PLAN

NOTE GÉNÉRALE / GENERAL NOTE

UTM ZONE 14 NAD 83 (SCRS)



L'INFORMATION CI-CONTENUE EST LA PROPRIÉTÉ DE AGNICO EAGLE LTD ET DOIT ÊTRE RETENUE SUR DEMANDE, SANS AUTORISATION ÉCRITE. PRÉALABLE, TOUTE TRANSMISSION DE COPIES À ALORS ET TOUTE ÉVALUATION AUTRE QUE CELLE POUR LAQUELLE L'INFORMATION EST PRÉCISE, SOUS INTERDIT. (C) AGNICO EAGLE LTD.
THE INFORMATION HERE ON IS THE PROPERTY OF AGNICO EAGLE LTD. AND MUST BE RETURNED UPON REQUEST. WITHOUT WRITTEN PERMISSION, ANY COPIING, TRANSMISSION, TO OTHERS AND ANY USE EXCEPT THAT FOR WHICH IT IS LOANED ARE PROHIBITED.
(C) AGNICO EAGLE LTD.

DESSINS EN RÉFÉRENCE / REFERENCE DRAWINGS

TITRE / TITLE	# DWG



AGNICO EAGLE

1	2015/11/23	ISSUED FOR CONSTRUCTION	S.D.	S.D.	E.T.
0	2015/10/08	ISSUED FOR CONSTRUCTION	S.D.	P.C.	E.T.
REV.	DATE	DESCRIPTION	PAR/APP.	APP.	CLIENT

REVISIONS



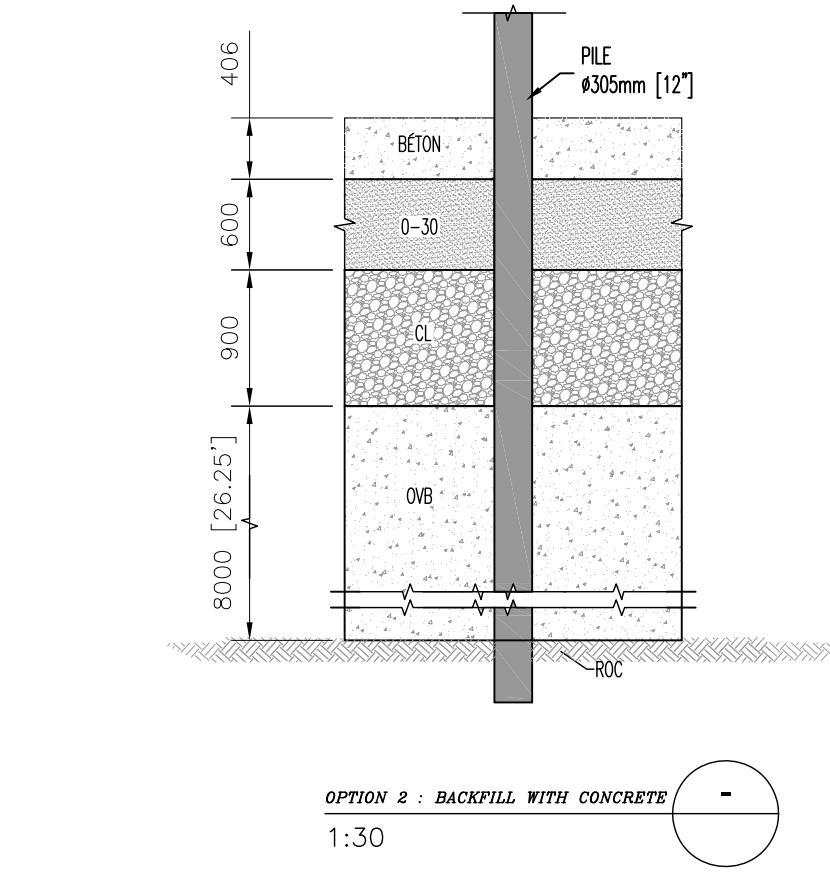
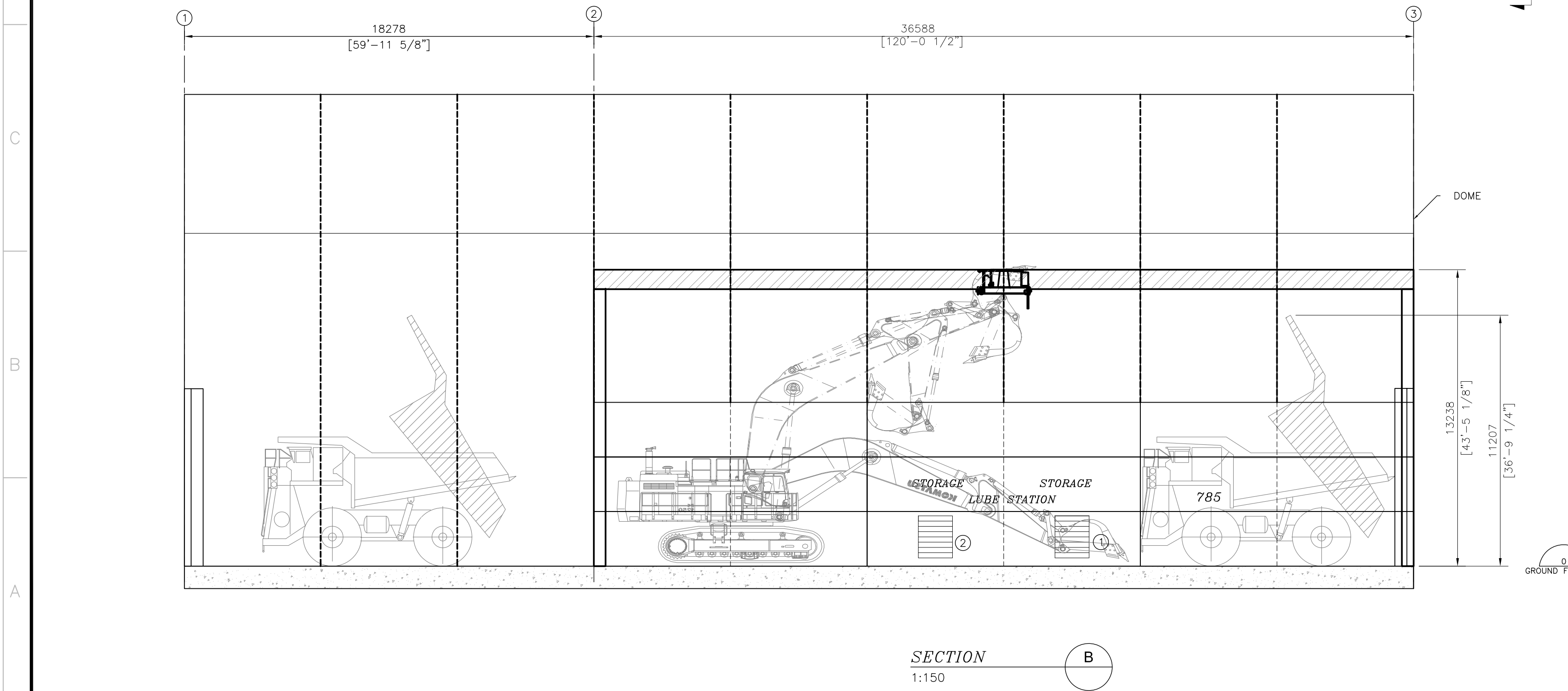
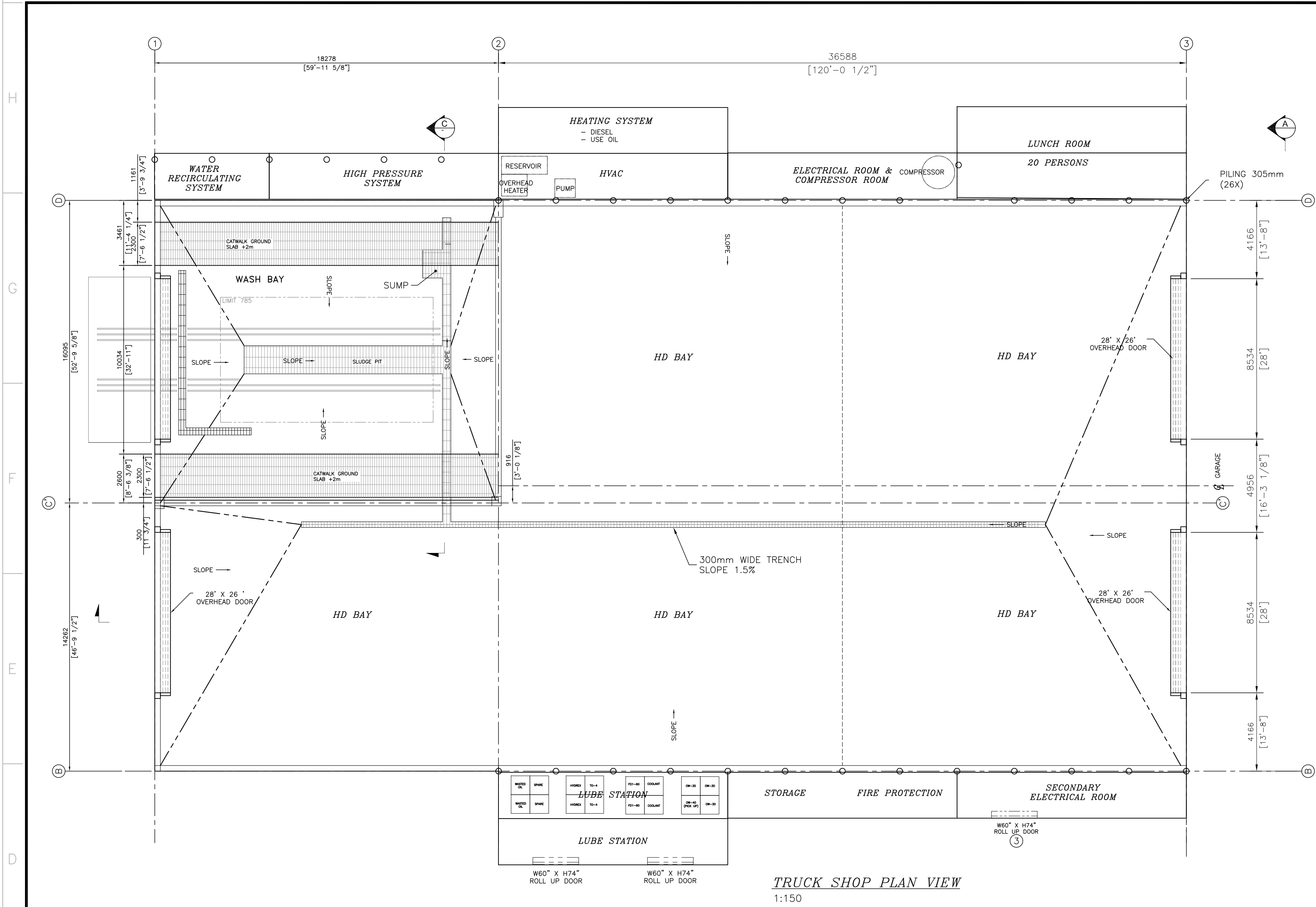
TITRE / TITLE
AGNICO EAGLE -- MEADOWBANK DIVISION
117-ROAD, YARDS, FENCES AND OTHER
VAULT TO AMARUQ
230-GENERAL EARTH WORK ROAD
CULVERT
INSTALLATION DETAILS

DESSINÉ PAR DRAWN BY	SYLVIE DUFOUR.	DATE	2015/11/23
VÉRIFIÉ PAR CHECKED BY	ERIC TRUDEL, P.Eng.		2015/11/23
APPROUVÉ PAR APPROVED BY	STEPHANE DUPUIS, P.Eng.		2015/11/23

ÉCHELLE
SCALE 1 : 1000 DATE 2015/04/28

NO. DESSIN
DRAWING NO. 6103-117-230-270

NO. PROJET PROJECT NO.	REVISION	FEUILLE / SHIT
6103	1	1 / 1



SPECIFICATION:

DIMENSIONS 777 :

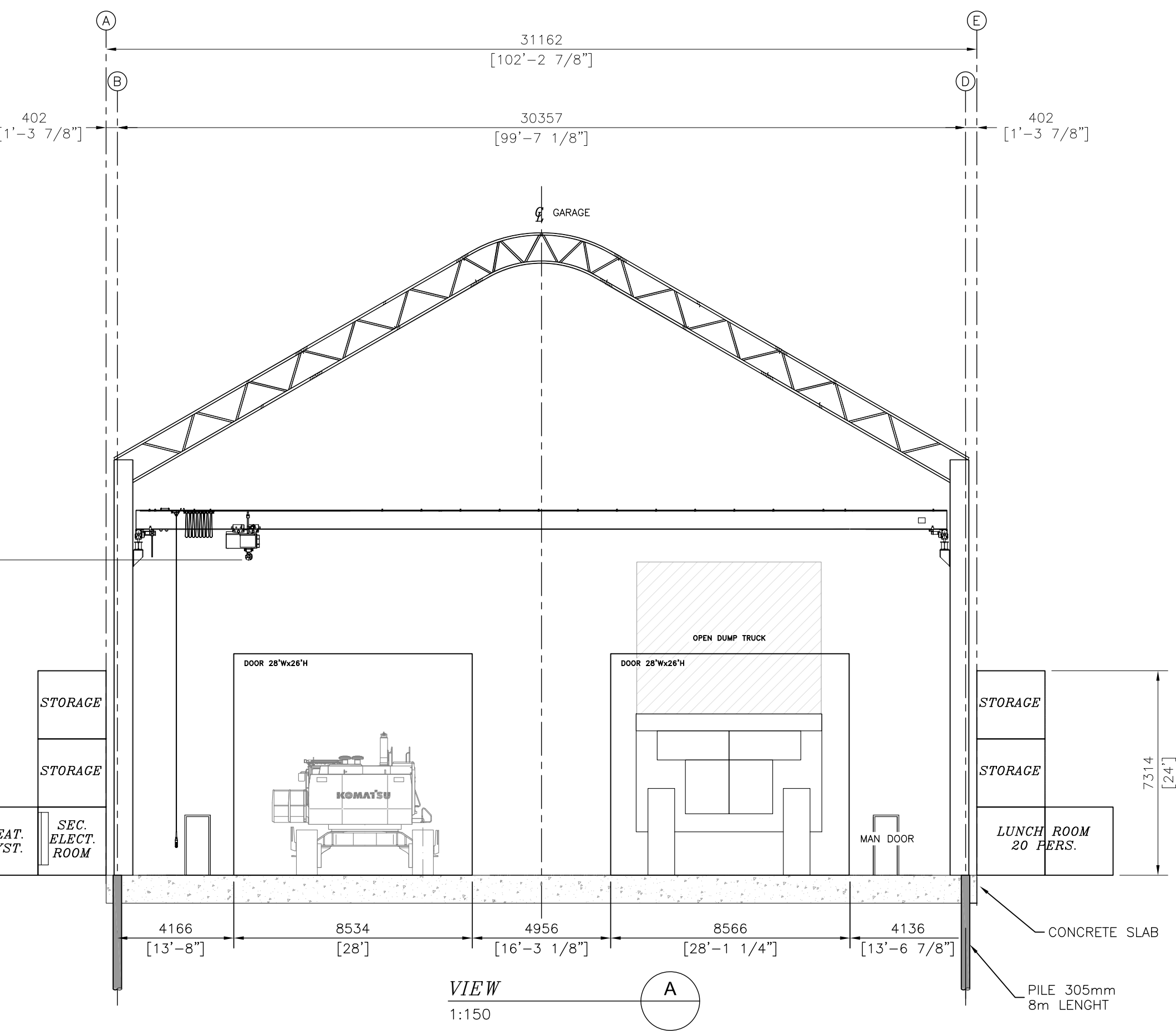
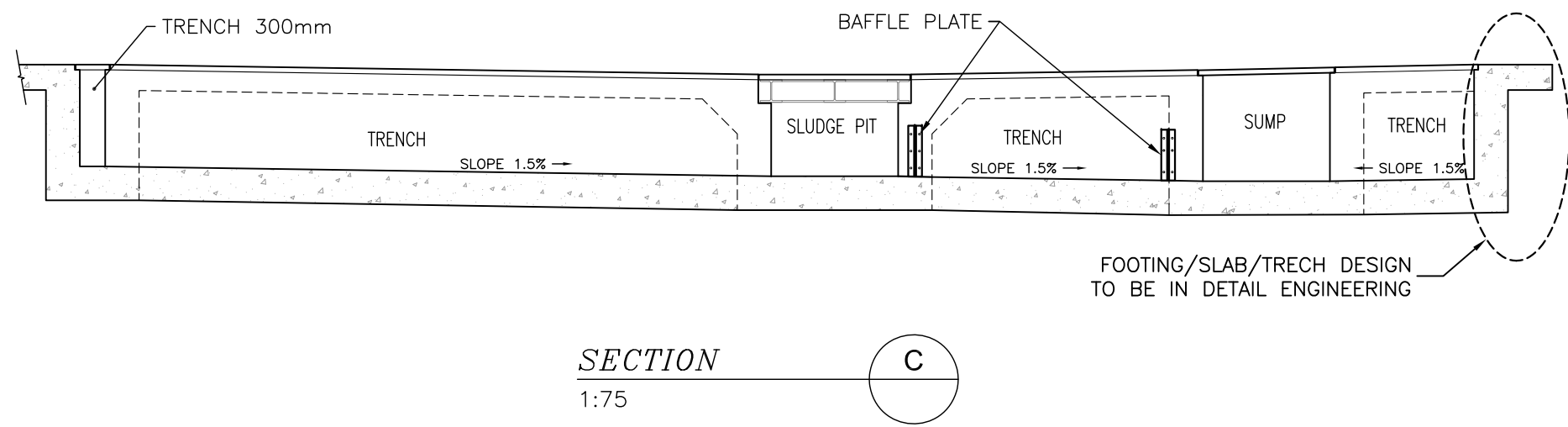
- EMPTY OPERATING WEIGHT : 72 977 kg 160 549 lb
- OVERHALL HEIGHT - BODY RAISED : 10 325 mm 33ft 11 in
- OPERATING WIDTH: 6494mm 21 ft 4 in
- FRONT CANOPY HEIGHT : 5170 mm 17ft

DIMENSIONS 785 :

- EMPTY OPERATING WEIGHT : 102 150 kg 224 730 lb
- OVERHALL HEIGHT - BODY RAISED : 11 207 mm 36ft 10 in
- OPERATING WIDTH: 6640mm 21 ft 10 in
- FRONT CANOPY HEIGHT : 5769 mm 19 ft 0 in

DIMENSIONS PC 1250 KOMATSU :

- EMPTY OPERATING WEIGHT : 106 500 kg 234 300 lb
- OVERHALL HEIGHT - BODY RAISED :
- OPERATING WIDTH:
- FRONT CANOPY HEIGHT :



PLAN CLE
KEY PLAN

NOTES GÉNÉRALES / GENERAL NOTES

TEMPERATURE INSIDE : 10 - 15°C

**PRÉLIMINAIRE
PRELIMINARY**
AGNICO EAGLE DATE : 2017-02-22

**POUR INFORMATION
FOR INFORMATION**
AGNICO EAGLE DATE : 2017-02-22

L'INFORMATION CONTENUE EST LA PROPRIÉTÉ DE AGNICO EAGLE LTD ET DOIT ÊTRE RETENUE SUR DEMANDE. SANS AUTORISATION ÉCRITE, PRÉLIMINAIRE, TOUTE TRANSMISSION DE COPIES À AUTRES ET TOUTE RÉVÉLATION À UN TROISIÈME PARTI SONT INTERDITES. © AGNICO EAGLE LTD.

ALL INFORMATION HEREIN IS THE PROPERTY OF AGNICO EAGLE LTD. AND MUST BE RETURNED UPON REQUEST. WITHOUT WRITTEN PERMISSION, PRELIMINARY, ANY COPYING, TRANSMISSION TO OTHERS AND ANY USE EXCEPT THAT FOR WHICH IT IS LOANED ARE PROHIBITED. © AGNICO EAGLE LTD.

DESSINS EN RÉFÉRENCE / REFERENCE DRAWINGS

TITRE / TITLE	# DWG
-	-
-	-
-	-
-	-
-	-
-	-

AGNICO EAGLE

REV.	DATE	DESCRIPTION	PAR/ENI	APP.	CLIENT
A	2017-02-22	ISSUED FOR INFORMATION	JC	DL	

REVISIONS

AMARUQ PROJECT

TITRE / TITLE
AGNICO EAGLE - AMARUQ
441- MAINTENANCE SHOP
210 - GENERAL ARRANGEMENT
PLAN, SECTIONS & DETAILS
MAIN MAINTENANCE SHOP ARR'GMT
HD BAY

DESSINÉ PAR
DRAWN BY J. CRETE DATE 2017-02-22

VÉRIFIÉ PAR
CHECKED BY D. LAFLAMME

APPROUVÉ PAR
APPROVED BY

ÉCHELLE
SCALE 1:150 DATE 2016-05-25

NO. DESSIN
DRAWING NO. 61-441-210-002

NO. PROJET
PROJECT NO. 6115

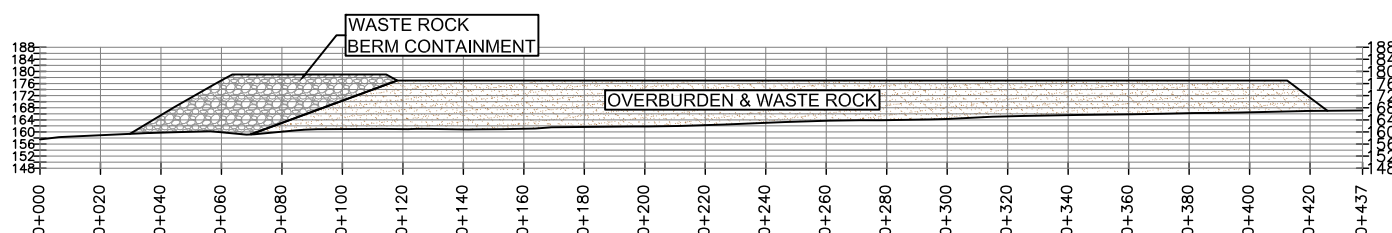
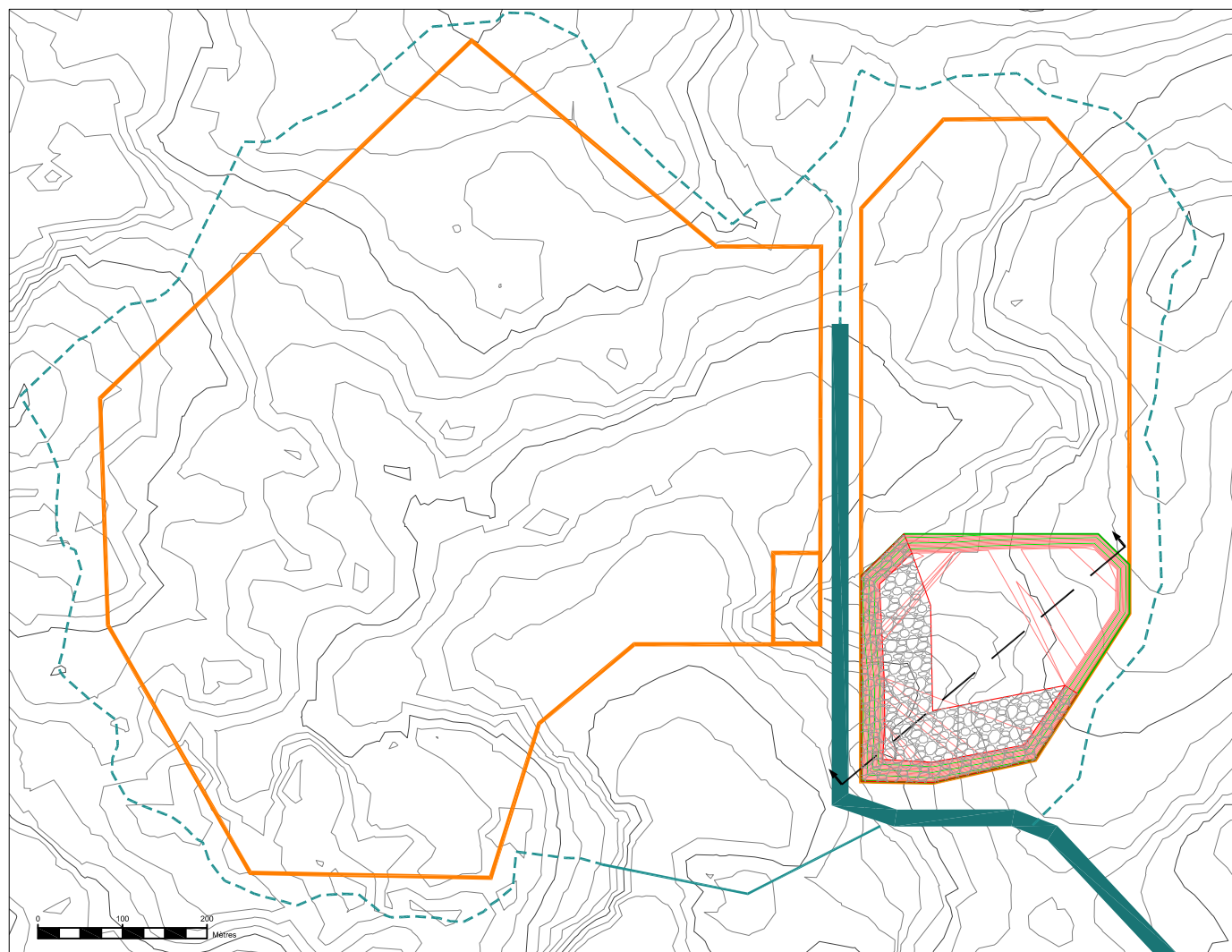
REVISION	FEUILLE / SHIT
A	1 / 1



AMARUQ		2017-Q4	2018-S1	T	m ³	
Number of Days	day	92	183	CUM Q4-S1	CUM Q4-S1	d BulkPile
Total Tonnage	tonne	744 679	1 061 231	1 805 910	959 443	
Waste	tonne	499 149	368 875	868 024	438 396	1.98
OVB	tonne	245 530	692 355	937 885	521 047	1.80

Résumé de déblai/remblai

Nom	Facteur de déblai	Facteur de remblai	Aire 2D	Déblai	Remblai	Net
VOL Waste Pile Quarry 1-2 A	1.000	1.000	77095.80m ²	0.03 M ³	1041795.42 M ³	1041795.38 M ³ <Remblai>
Totaux			77095.80m ²	0.03 M ³	1041795.42 M ³	1041795.38 M ³ <Remblai>



REV	DATE	DESCRIPTION	PAR
REVISIONS			
AGNICO EAGLE – MEADOWBANK DIVISION			



686—WASTE ROCK & OVERBURDENT MGMT PLAN & SECTION PILE QUARRY 1 & 2 – 2018 Q2			
No. PROJ PROJECT No.		DATE 2017-03-10	
DESSINE PAR DRAWN BY J.C.			FEUILLE/SHT 1 / 1
APPROUVÉ PAR APPROVED BY F.P.			
NO. DESSIN DRAWING NO. 6112-686-210-001		REVISION A	