



ABANDONMENT AND RESTORATION PLAN

ARCADIA BAY PROPERTY Coronation Gulf Area, NU

Prepared by:



Effective Date:

1 June 2017

Table of Contents

	<u>Page No.</u>
1. INTRODUCTION	1
1.1 Contact Details	1
1.2 Purpose and Scope	1
1.3 Other Plans.....	1
1.4 Property and Camp Description.....	1
2. SCHEDULE	2
3. DETAILED INFRASTRUCTURE	3
3.1 Proposed Seasonal Camp.....	3
3.1.1 Structures.....	3
3.1.2 Other Camp Infrastructure.....	3
3.1.3 Vehicles.....	3
3.1.4 Drilling Equipment.....	3
4. SEASONAL SHUT DOWNS	4
4.1 Inspection and Documentation.....	4
4.2 Buildings, Content, and Fuel	4
4.3 Waste	4
4.3.1 Combustible Waste.....	4
4.3.2 Non-Combustible, Recyclable and Hazardous Waste	4
4.3.3 Grey Water	4
4.3.4 Sewage	5
4.3.5 Contaminated soils/snow	5
4.3.6 Empty fuel drums	5
4.4 Seasonal Restoration.....	5
5. FINAL ABANDONMENT AND RESTORATION	5
5.1 Inspection and Documentation.....	5
5.2 Buildings, Content, and Fuel	6
5.3 Waste	6
5.4 Restoration.....	6
6. POST-CLOSURE SITE MONITORING	6
7. EMERGENCY CONTACT INFORMATION	6

Tables

Table 7.1: Emergency Contact Information	6
---	---

Appendices

APPENDIX 1: Arcadia Bay Property Figures	8
APPENDIX 2: Arcadia Bay Property Example Seasonal Camp Shutdown Inspection Record...	10
APPENDIX 3: Arcadia Bay Property Example Camp Inventory Record.....	12

1. INTRODUCTION

This Abandonment and Restoration Plan (ARP) applies to mineral exploration activities conducted by Transition Metals Corp. and Nunavut Resources Corporation (the Companies) on the Arcadia Bay Property (the Property), Nunavut, Canada.

This ARP will come into effect 1 June 2017, pending approval. Copies and updates to this plan may be obtained via Transition Metals Corp. (Transition) or APEX Geoscience Ltd. (APEX). The ARP will be replaced, upon approval, if there are any significant changes to the activities outlined in the existing permits which warrant changes to the ARP. Minor changes will be submitted as an addendum to the ARP and submitted to the distribution list as required.

1.1 Contact Details

Transition Metals Corp.

#5 – 410 Falconbridge Road

Sudbury, ON P3A 4S4

Tel: (705) 669-1777

Fax: (705) 669-1100

www.transitionmetalscorp.com

Nunavut Resources Corp.

Box 18

Cambridge Bay, NU X0B 0C0

Tel: (867) 983-2458

Fax: (867) 983-2701

www.nunavutrc.com

APEX Geoscience Ltd.

110-8429-24 Street NW

Edmonton, AB T6P 1L3

Tel: (780) 467-3532

Fax: (780) 467-4025

www.apexgeoscience.com

1.2 Purpose and Scope

The purpose of the Arcadia Bay Property ARP is to provide guidelines to follow during seasonal shutdown and final abandonment of the Property, in order to return exploration sites to as near as possible to natural conditions.

1.3 Other Plans

The ARP should be considered as a part of the property-wide management system. Other management plans in place at the Arcadia Bay Property include:

- Emergency Response Plan (ERP)
- Environmental Management Plan (EMP)
- Spill Contingency and Fuel Management Plan (SCFMP)
- Waste Management Plan (WMP)

1.4 Property and Camp Description

The Arcadia Bay Property is a gold mineral exploration property located within the Kitikmeot region of Nunavut, within the 1:50,000 National Topographic System (NTS) map sheet 076M11. The Property, composed of Inuit-Owned Land (IOL) Parcel CO-31, is located on the shore of Arcadia Bay, on the Coronation Gulf, approximately 160 kilometres (km) east of Kugluktuk, 200 km west of Hope Bay, and 305 km southwest of Cambridge Bay. The Property is centred at approximately 67°42'21.6"N and 111°32'13.2"W or, using the Universal Transverse Mercator (UTM) conformal projection, 483608 E/7510147 N, North American Datum (nad) 83 zone 12. The land parcel measures approximately 7.5 km north-south by 4.5 km east-west covering 2,696 hectares (Appendix 1).

Float or ski-equipped fixed wing aircraft access to the Property is via Salt Lake, located on the northern perimeter of the Property. Alternatively, an airstrip associated with the Ulu deposit is located approximately 95 km to the south or there is also an airstrip at the Tree River Lodge, located approximately 20 km to the west, which can also be utilized. A helicopter will remain

onsite to move personnel and equipment around the project area. A barge landing site, located at the north end of the Property may also be utilized. Barge service is available on the Coronation Gulf for a short season in mid to late summer.

The proposed 2017 exploration activities on the project will include a 12 hole diamond drill program, totaling approximately 2,500 metres (m). A small (12-person) seasonal camp will be required to support the exploration activities at the project. The camp will be located approximately 2 km south of the barge landing, at a historic site used by Orofino Resources Ltd. in the late 1980's. The approximate location of the camp is 67°43'12.9" N and 111°23'6.9" W or 483701E/7511726N UTM NAD 83 Zone 12. The camp structures are expected to include 1 office tent (12X16'), 3 sleeping tents (12X16' each), 1 first aid tent (12X16'), 1 dry (16X20'), 1 generator/storage shack or Weatherhaven tent (14X16'), and 1 core logging/sample storage shack (16X20'). The majority of the structures will be insulated Weatherhaven tents, or similar, with plywood floors.

A fuel cache will be established on stable ground near the camp, primarily to store diesel (to a maximum of 100-205 litre (L) drums) and jet fuel (to a maximum of 50-205 L drums). Small quantities of gasoline (to a maximum of 10-205 L drums) and propane (to a maximum of 50-100 pound (lb) cylinders) will also be stored. Small temporary fuel caches (totaling less than 4,000 L) may also be required to support the exploration activities, such as staking, prospecting, geological sampling and geophysics at the Property.

2. SCHEDULE

The 2017 exploration program is projected to start July 1st, or as soon as authorizations are received, and run for approximately 60 days. Prior to subsequent years program commencements, all the regulatory authorities and will be notified and supplied with updated schedules.

As a generalized guide for future timing of activities, equipment and supplies, including camp construction materials, will be mobilized in the spring. It is expected that camp construction will take approximately one week. Drilling will commence as soon as the camp is constructed and all equipment can be mobilized, and may have the potential to continue through the winter.

Exploration programs which may include prospecting, geochemical sampling, ground geophysical surveys and drilling are anticipated for three to four subsequent years, depending on each of the previous year's results.

Final abandonment and restoration will commence as soon as possible after it has been determined that the project does not warrant further exploration or following commercial production. The duration of the final abandonment and restoration is dependent on the scale of infrastructure on site and on environmental parameters (physical, biological, and socio economic). All abandonment and restoration work will be completed prior to the date of expiry of any existing or future applicable land use permits and water licenses.

3. DETAILED INFRASTRUCTURE

3.1 Proposed Seasonal Camp

The following is a list which details the potential structures, equipment and vehicles that may be constructed or stored at the proposed seasonal camp.

3.1.1 Structures

- 5 12'x16' insulated Weatherhaven tents (or similar) with plywood flooring to serve as office, sleeping and first aid tents
- 3 16'x20' insulated Weatherhaven tents (or similar) with plywood flooring to serve as kitchen, dry and core logging/sample storage tents. The dry will contain 1 sink and 1 shower.
- 1 14'x16' Weatherhaven tent (or similar) with plywood flooring, or completely wooden shack (to assist with sound insulation), to serve as housing for a 10 to 20 kW diesel generator.
- 1 5'x5' wooden outhouse structure

3.1.2 Other Camp Infrastructure

- 2 Water tanks (1 for kitchen and 1 for dry)
- 2 Water pumps with fish screens and hose line
- 1 Camp fuel cache, with Insta-Berm (or similar) secondary containment.

3.1.3 Vehicles

- 1 Helicopter (A-Star, Bell 407, or similar)

3.1.4 Drilling Equipment

- 1 Zinex A5 (or similar) diamond drill complete with motor, gear box, drill head, tower, overshot, skids, and housing
- 1 Supply pump with shack
- 1 Mix tank with pressure pump
- 6 Coil heater
- 6 Fuel tank
- 6 Fly basket for drill equipment, spares, supplies, etc.
- 400 3 m NQ drill rods
- 50 NQ casing (various sizes)
- 150 100' hose line

4. SEASONAL SHUTDOWNS

4.1 Inspection and Documentation

Prior to a seasonal shutdown of the camp, a complete inspection of all areas will be conducted. Photographs will be taken to document the conditions prior to leaving the site, and will be archived along with any photos taken at the beginning of each season. Copies of these photos will be included as part of the Arcadia Bay Property Annual Report. An example Seasonal Camp Inspection Record is attached in Appendix 2.

4.2 Buildings, Content, and Fuel

A full inventory of all structures, equipment, fuel, and other supplies will be taken at the beginning and end of each exploration season. An example Camp Inventory Record is attached in Appendix 3.

All food, fuel, wastes, empty fuel drums, and valuable or sensitive equipment will be removed from site. A few wooden structures will be left at the camp. All structures to be left on site will be winterized, closed off, and secured. One structure will be designated to house any chemicals or other hazardous materials that are not suited to outdoor storage. All water tanks and pipes will be drained at the end of each season. Pumps and hoses, remaining at site, will be drained and stored inside a secured structure. All mechanical equipment to remain at site, including any drill equipment and generator, will be winterized and stored in berms for secondary containment. When possible, the equipment and berms will be fully covered.

All remaining fuel and empty drums will be removed from site.

4.3 Waste

All 2017 wastes will be separated into combustible, recyclable or hazardous waste and all non-combustible waste will be backhauled for proper disposal.

4.3.1 Combustible Waste

All combustible waste will be incinerated in accordance with the Nunavut Environmental Guideline for the Burning and Incineration of Solid Waste utilizing an Environment Canada-approved batch waste, controlled air, dual chamber incinerator. Any residual waste (ash) will be placed in sealed containers and backhauled for proper disposal.

4.3.2 Non-Combustible, Recyclable and Hazardous Waste

All non-combustible, recyclable and hazardous wastes, including lubricating oils, hydraulic fluids, petroleum-based solvents, batteries, aerosol cans and fluorescent light bulbs will be sealed in appropriate containers and backhauled to Yellowknife for proper disposal at an accredited facility.

4.3.3 Grey Water

Camp grey water will be stored and treated in an excavated sump, which will allow for slow infiltration into the soil and will be located at least 31 m from the high water mark of any water body. If available, coarse gravel will be placed in the bottom of the sump to provide filtration, and supports will be built on the sides to prevent slumping. Filters will be installed on kitchen drains to ensure solid food wastes do not enter the sumps and have the potential to attract wildlife. When full, grey water sumps will be covered with enough material to allow for future ground settlement.

4.3.4 Sewage

Privy pits (outhouses) will be located at least 31 m from the high water mark of any water body. To control sewage pathogens, outhouses will be periodically treated with lime. When full, the pits will be covered with at least 30 centimetres (cm) of compacted soil. Alternately, portable toilet systems will be used and the waste incinerated.

4.3.5 Contaminated soils/snow

Any contaminated soil, snow, or ice will be cleaned up immediately in accordance with the Arcadia Bay Property SCFMP. All contaminated soil, snow, and ice will be sealed in 205 Litre steel drums and stored in the hazardous waste storage area to await backhaul to a registered hazardous waste receiver.

4.3.6 Empty fuel drums

Empty drums will be collected in a designated area and returned to the supplier. Alternatively the drums may be drained, air dried, and backhauled to a recycling facility.

For more information on waste generation and management see the Arcadia Bay Property WMP.

4.4 Seasonal Restoration

Any contaminated areas around the camp, fuel caches or drill sites will be treated in accordance with the Arcadia Bay Property SPFMP. Any washed-out areas will be filled and re-contoured to natural levels. Any areas of disturbed vegetation, including camp, fuel caches or drill sites will be photographed and managed as per recommendation of the KIA and INAC inspector. Remediation procedures might include fertilization to encourage re-growth.

5. FINAL ABANDONMENT AND RESTORATION

5.1 Inspection and Documentation

Prior to final abandonment, a thorough inspection of all areas will be conducted. Any contaminated areas around the camp, fuel caches or drill sites that have gone unnoticed will be treated as per the SPFMP. Photographs will be taken to include in the final reports submitted to the KIA, NWB and NIRB. All relevant regulatory agencies will be notified upon final abandonment of the Property.

5.2 Buildings, Content, and Fuel

Prior to land use permit or lease termination, all structures, equipment, supplies, and fuel will be removed from the Property with the exception of the drill core stacks, which will be permanently secured on site. Any materials of value on site will be salvaged.

Any wooden floors will be burned in accordance with the Nunavut Environmental Guideline for the Burning and Incineration of Solid Waste, and tent sites may be fertilized, as per recommendation by the Inspector, to encourage re-vegetation. The open burning of structures will only occur after approval from the KIA and NWB. A request letter will be submitted to the regulating authorities, which will include the characteristic and volume of material to be burned.

Drills and drilling equipment will be dismantled, packaged, secured, and shipped as per the drill contract. All drill casing will be removed from the ground or if removal is not possible, cut down to ground level or below and capped.

All remaining fuel and empty drums will be removed from site. The soil under and surrounding any area where fuel was stored will be thoroughly inspected for any contamination and photographs will be taken.

5.3 Waste

All wastes will be disposed of in accordance with the Arcadia Bay Property WMP and any contamination will be treated as per the SPFMP. Sumps will be inspected to ensure there is no leaching or run-off. Back filling and levelling will be employed as necessary.

5.4 Restoration

Tent sites, drill sites, and any other areas disturbed by activities related to exploration at the Arcadia Bay Property will be fertilized as recommended by the KIA and INAC Inspector to encourage re-vegetation. Eroded or washed out areas related to exploration activities will be filled and re-contoured to natural levels. Any contaminated areas around the camp, fuel caches or drill sites that have gone unnoticed will be treated as per the SPFMP.

6. POST-CLOSURE SITE MONITORING

After reclamation is complete, annual monitoring may take place. If required, the monitoring may consist of soil and water testing, measuring and documenting plan re-growth, examining potential run-off and erosion problems, and checking the stability and condition of the core boxes. Reports, including photographs, will be submitted to the appropriate regulatory bodies. The monitoring will continue as long as the regulating bodies deem it necessary.

7. EMERGENCY CONTACT INFORMATION

Table 7.1: Emergency Contact Information

Contact	Telephone Number
24 Hour Nunavut Spill Report Line	867-920-8130
Thomas Hart (Transition Metals Corp.)	705-669-1777 Ext 203 (office) 705-662-8403 (mobile)
Kitikmeot Inuit Association	867-982-3310 (phone) 867-982-3311 (fax)
INAC Resource Management Officers (Kitikmeot Region)	867-982-4306 (Kugluktuk)
INAC Water Resource Officers (Kitikmeot Region)	867-982-4306 (Kugluktuk)
IANC Field Operations Manager	867-975-4295 (Iqaluit)
Government of Nunavut Department of Environment	867-975-7700 (Iqaluit)
DFO (Central and Arctic Branch)	519-383-1813
Nunavut Water Board	867-360-6338
RCMP (Kugluktuk)	867-982-1111 (emergency) 867-982-0123 (general)
RCMP (Cambridge Bay)	867-983-1111 (emergency) 867-983-0123 (general)

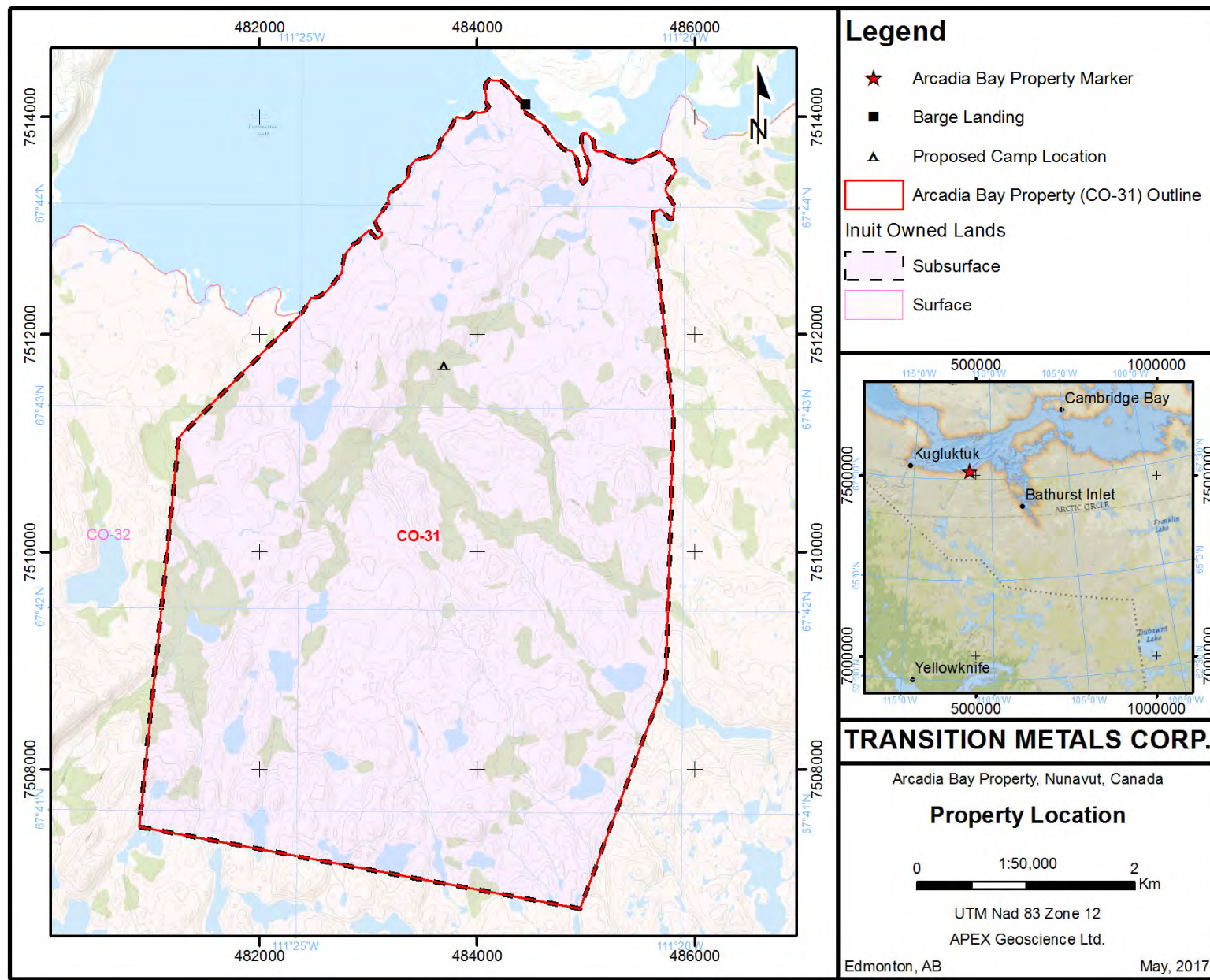
Contact	Telephone Number
RCMP (Yellowknife)	867-765-8403 (general)
Stanton Territorial Hospital (Yellowknife)	867-669-4111 (switchboard)
	867-669-4115 (medical travel)
Kugluktuk Health Centre	867-982-4531
Cambridge Bay Health Centre	867-793-2816
Medevac (Adlair Aviation, Yellowknife)	888-873-5161
Medevac (Adlair Aviation, Cambridge Bay)	867-983-2569
Camp Satellite Phone	TBA
Helicopter Satellite Phone	TBA
Drill Site Satellite Phone	TBA
Field Crew Satellite Phone(s)	TBA

* Phone numbers for the satellite phones change annually. Once the numbers have been assigned, all applicable plans will be updated.

APPENDIX 1:

Arcadia Bay Property

Figures



APPENDIX 2:
Arcadia Bay Property
Example Seasonal Camp Shutdown Inspection Record

Area	Complete	Comment	Inspector
General Camp area			
General camp area inspected for any waste, spills or contamination			
General camp area secure for winter			
All combustible and non-recyclable waste incinerated			
All non-combustible waste prepared for removal			
Any unnecessary or excessive vegetation damage			
Buildings and Content			
All tents and building complexes secured for the winter and cleared of any debris.			
All office equipment; furniture; kitchen equipment; recreational equipment and other mobile heavy equipment will be winterised and secured			
Any equipment not capable of withstanding the harsh winter conditions will be removed			
Area inspected for petroleum spills or contamination.			
Water Supply System			
Water pumps, filtering systems, water lines and any other equipment associated with the water supply system drained and winterised			
Water pump shed will be secured.			
Area inspected for petroleum spills or contamination.			
Sewage System			
Greywater system drained (ie. no greywater remaining in the discharge pipe).			
Greywater sumps treated if required, filled and recontoured			
Privy Pits treated with lye and winterized			
Privy Pits secure and cleared of any debris			
Area inspected for petroleum spills or contamination.			
Waste Incinerator			
Incinerator Fuel supply shut off using all valves.			
Incinerator Fuel in appropriate and functional secondary containment adjacent to the incinerator			
Area inspected for petroleum spills or contamination.			
Incinerator area cleared of any debris.			
Electrical System			
Generator shack and surrounding area inspected for signs of spills and remaining wastes such as oil and grease.			
Generator shed is lined with enviromat in the event any external spills go unnoticed			
Generator drained of fuel and winterized			
Generator shack secured for winter			
All electrical wires, plugs and sockets which remain in their installed locations are safe and secure			
All electrical cords temporarily connected to a buildings or machinery unplugged, rolled and stored			
Camp Heating Systems			
Each 205 L fuel barrel attached to respective tent or building secured and within secondary containment			
Any remaining fuel in lines will burned out.			
Empty propane cylinders ready for transport for refilling or recycling.			
Any sleeping quarters converted to electric heat are secured			
Petroleum Products and Storage Facilities			
All Fuel stored in appropriate and functional secondary containment			
All Fuel storage areas clearly marked in the event snow clearing activities are required during spring camp opening			
All Fuel storage areas GPS location recorded			
All Fuel labelled properly			
Area inspected for spills or contamination.			
Fuel storage area cleared of any debris.			
Chemicals and Hazardous Waste			
All chemicals stored in appropriate building or on within appropriate functional secondary containment			
All household cleaners properly secured and stored in kitchen and dry.			
All empty bags/containers removed for proper disposal			
Any remaining waste fuel, oil and grease stored in approved and labelled containers for reuse during summer operations.			
Any hazardous waste that cannot be reused properly stored, sealed, labels, and prepared for removal			
Area inspected for spills or contamination.			
Area cleared of any debris.			
Spill Response Kits			
Spill kit inventory performed			
Spill kits not needed over winter relocated to secured building			
Spill kits needed over winter (ie. for the remaining petroleum areas) properly stocked and secure			
Emergency Response			
Fire extinguishers in working order and secure in all necessary locations			
Smoke/CO2 detector in working order and secure in all necessary locations			
Fire extinguishers used prepared for removal for refilling			
Transportation			
Transport areas including air strips, helipads, ATV trails, docks and footpaths inspected for spills or contamination.			
Vehicles remaining onsite moved into secure buildings			
Vehicles remaining onsite winterized			
Drill Sites			
Diamond drills dismantled and ready for demobilization or secure in designated storage area			
Diamond drills remaining on site winterized			
Any drill casing unable to be removed flush cut so as to not pose a hazard			
Drill sites restored and inspected for any waste, spills or contamination			
Drill sites photographed before drilling and after restoration			
Documentation			
Proper documentation and approvals for all inert and Hazardous waste transport and receiving			
Notification to all required authorities of pending seasonal shut down			
Baseline samples (ie. water, soil, air quality) collected and all data recorded			
Inspections recorded, dated and signed			
Photos taken of camp, drill sites, fuel caches and any other important locations/items			
Photos of drill lay down storage area			
GPS coordinates recorded for camp, fuel storage areas, drill sites, wildlife or habitat sightings, Archeological/paleontological sites or any area/items of interes			
Descriptions recorded for all wildlife or habitat sightings, Archeological/paleontological sites or any area/item of interes!			
Year-end inventory of all equipment and buildings left on site			
List of all equipment, items and repairs required for next operating season			

APPENDIX 3:
Arcadia Bay Property
Example Camp Inventory Record

First Aid Tent

Needed For Next Season

Generator Shack

Needed For Next Season

Seasonal Camp Shut Down Inventory

Kitchen Tent

<u>Container</u>	<u>Item</u>	<u>Quantity</u>	<u>Container</u>	<u>Item</u>	<u>Quantity</u>
Kitchen Box 1 - Dishes, Cutlery, Cooking Utensils	Dinner plates, dessert plates, bowls		Kitchen Box 4 - Large Kitchen Items	Stand up fridge	
	Coffee cups			Propane stoves	
	Juice cups			Overhead fans	
	Forks, spoons, butter knives			Grease traps for under sinks	
	Steak knives			Water cooler	
	Paring Knives			Chest freezers	
	Cutting knives			Barbeque	
	Cutlery trays			Metal brush for BBQ grill	
	Serving spoons			Folding tables	
	Slotted serving spoons			Folding chairs	
	Wooden spoons			Plastic bins for holding vegetables	
	plastic spatulas			microwave	
	Whisks			Floor mats	
	Can openers				
	Cutting boards				
	Tongs				
	Disposable drinking cups				
	Tupperware storage containers				
Kitchen Box 2 - Cookware, Bakeware	Square cake pans		Kitchen Box 5 - Cleaning	Teatowels	
	Round cake pans			Dishtowels	
	Pie pans			Rags	
	Cookie sheets			Dish racks	
	cake cooling rack			Scrub brushes	
	Bread loaf tins			Rubber gloves	
	non stick fry pan			Liquid handsoap	
	Large metal bowls			Smoke/CO2 Detectors	
	Small metal bowls			Brooms	
	Soup pots with lids			Dust Pans	
	Large pots with lids			Garbage Bins	
	Small pots with lids			Wooden Beds	
	5 gallon galvanized pot			Foamies	
	2 gallon galvanized pot				
	1 gallon galvanized pot				
	Sauce pan with lid				
	Omelet pan with lid				
	Roasting pans with lids				
Kitchen Box 3 - Small Appliances & Cleaning	Metal sieves		Needed For Next Season		
	Plastic sieves				
	Quisenaar with grating and slicing blade				
	Kitchen aide mixer				
	Coffee Makers				
	Electric kettle				
	Toaster				
	Pump style coffee thermos				
	Clothes pins				
	Hand pump for large water bottles				

Seasonal Camp Shut Down Inventory

Office Tent

<u>Container</u>	<u>Item</u>	<u>Quantity</u>
Office Box 1 -	Safety Gear	
	Safety glasses	
	Ear plugs	
	Hard hat ear defenders	
	Safety goggles	
	Dust masks	
	Respirator masks	
	Respirator filters	
	Bug repellent	
	Bear spray	
	Plastic rain suits	
	Mosquito coils	
	Air horns	
	Safety vest	
	Orange gloves	
	Leather gloves	
	Rubber gloves	
	Cloth gloves	

Office Box 2 - Field Gear

	Flagging	
	Packing tape	
	Nylon rope	
	Field books	
	Rock sample cards	
	Till sample cards	
	Core sample cards	
	Personal FA kits	
	Sample tags	
	Sharpies	
	Cable ties	
	Security seals	
	Rope chains	
	Scale	
	Electrical power bars	
	Surge protector	
	Measuring tape	

Office Box 3 - Office Supplies

	Binders	
	Stapler	
	Staples	
	White board	
	Dry erase pens	
	Pens	
	Pencils	
	Volt meter	
	3 hole punch	
	Push pins	
	Cameras	
	Printers	
	Printer paper	
	Router stand	
	Router booster	
	Cordless phones	

<u>Container</u>	<u>Item</u>	<u>Quantity</u>
Office Box 4 (freezables to be sent out for storage)	Epoxy	
	Enamel paint	
	Wet coat tree paint	
	Marker paint	
	Printer ink	

Office Box 5 -

Needed For Next Season
