



February 22, 2009

Sent via email

Phyllis Beaulieu
Licensing Manager
Nunavut Water Board
P.O. Box 119
Gjoa Haven, NU X0E 1J0

Dear Phyllis;

**RE: Addendum to the Updated March 2009 Spill Contingency Plan
Licence Number: 2BE- ANG0813 Type "B" – Amendment No. 1**

This letter is in response to a request for an Addendum to the Updated March 2009 Spill Contingency Plan, Item 2, of Amendment No. 1 to Licence No. 2BE-ANG0813 Type "B", issued to Kivalliq Energy Corporation by the Nunavut Water Board (NWB), dated January 25, 2010.

The Addendum includes two maps showing the location of amended camp facilities, camp layout and the camp fuel cache in relation to local topography and immediate water sources. As per our application and previous information letter, coordinates for the new amended camp site are:

- UTM 6937950mN / 527975mE, NAD83 Zone 14V or;
- 62 degrees, 34 minutes, 17 seconds North
98 degrees, 27 minutes, 20 seconds West

Also in response to the letter to NWB from Environment Canada, Environmental Protection Operations, dated November 20, 2009 and the letter to NWB from Government of Nunavut, Department of the Environment dated November 20, 2009 following are three 24 hour emergency contact numbers under Kivalliq Energy Corporations Spill Contingency Plan:

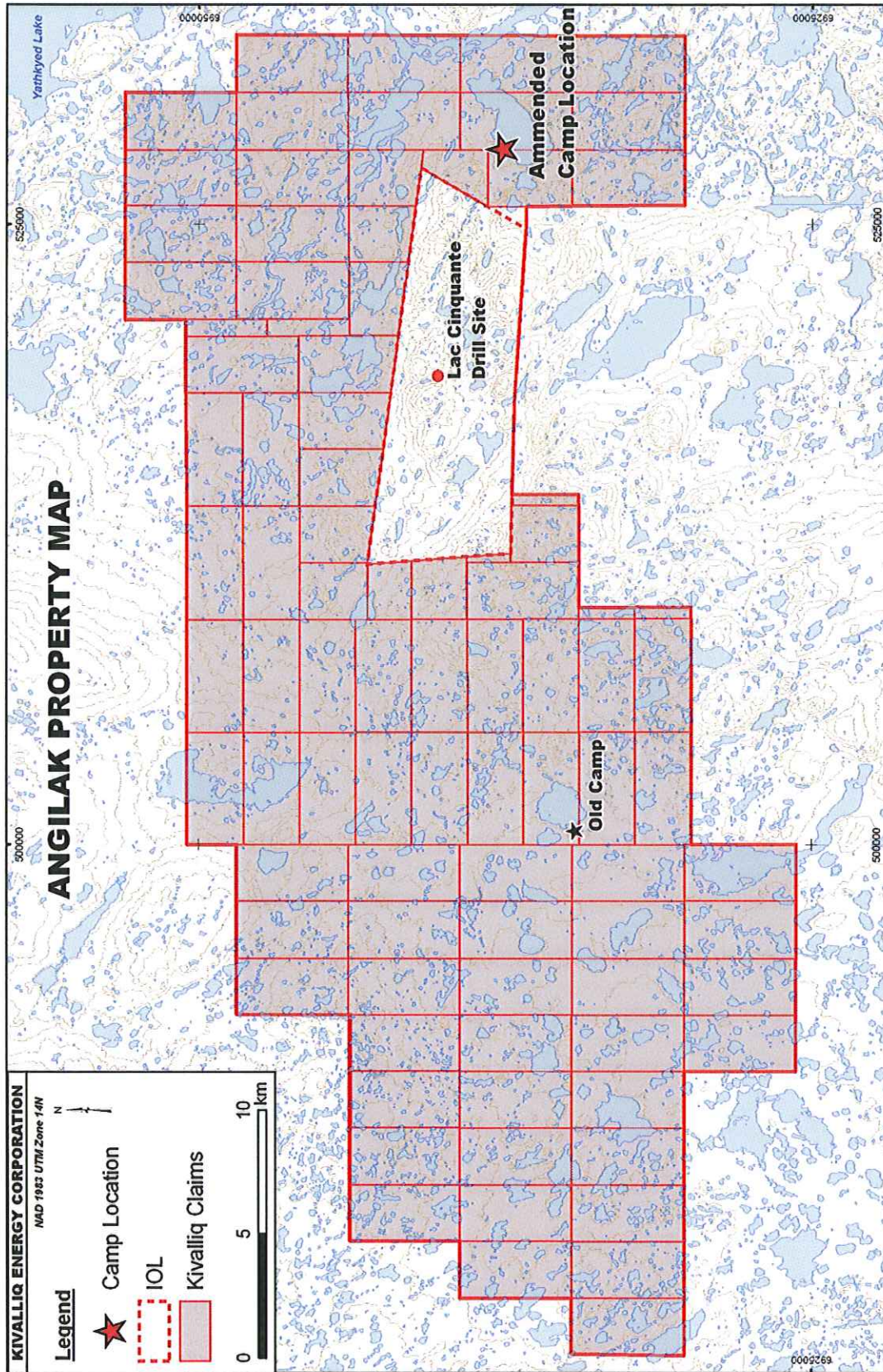
24 Hour Emergency Line for Environment Canada is 867-975-7700.
24 Hour Spill Line is 867-920-8130
24 Hour Kivalliq Emergency Contact, Jeff Ward VP Exploration is 604-763-8723

If you have any further questions or require any additional information, please do not hesitate to contact me directly or Allison Rippin Armstrong, Environmental Consultant working on behalf of Kivalliq Energy Corporation, at (780) 995-2499, or by email, ar_enviro@yahoo.ca.

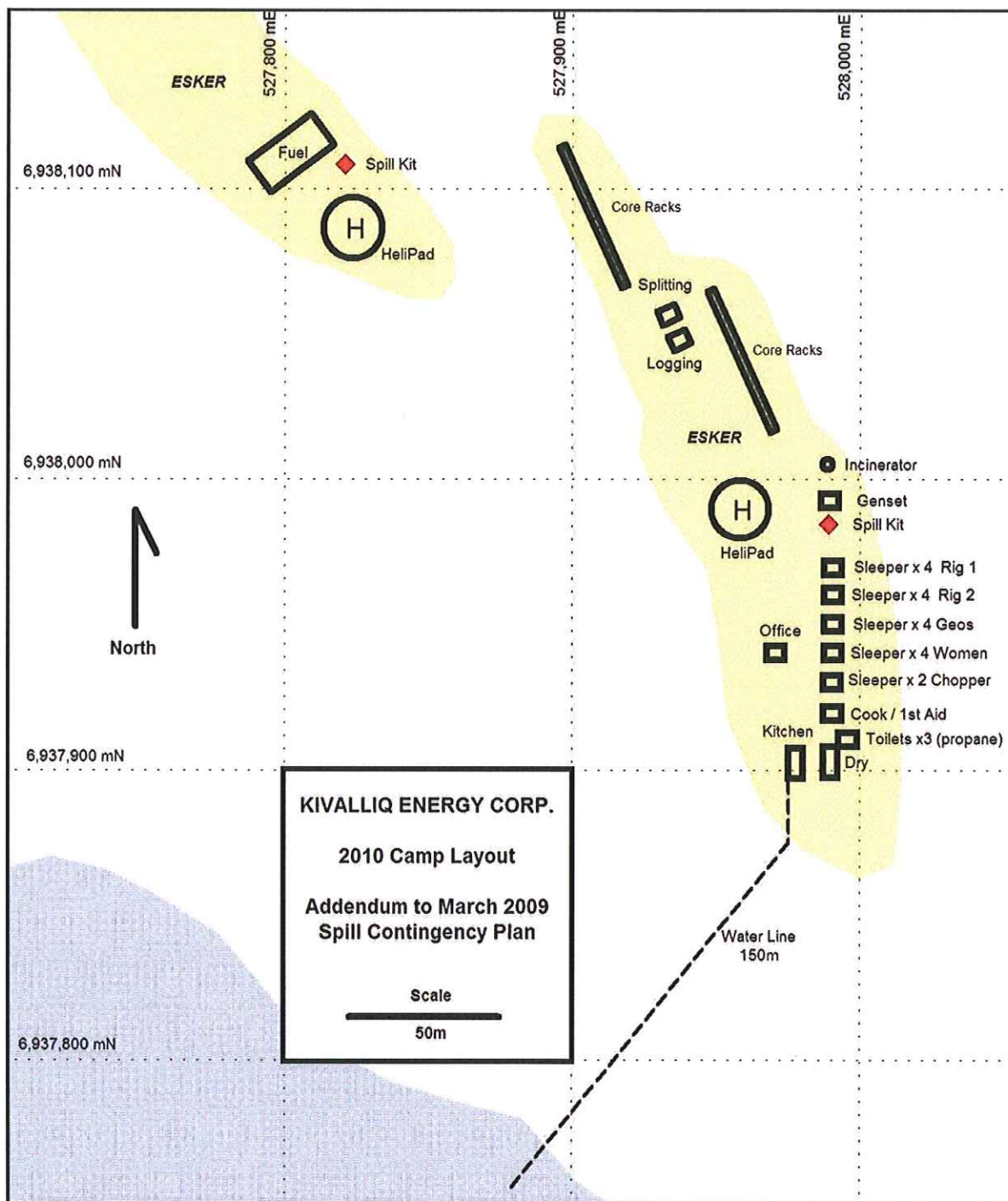
Sincerely,

Jeff Ward
Vice President of Exploration
Kivalliq Energy Corporation

Cc: Allison Rippen Armstrong, Environmental Consultant
Addendum Attached



Kivalliq Energy Corporation – Angilak Property Map
Showing the old camp site, the Lac Cinquante drill site and the Amended New Camp Location



Kivalliq Energy Corporation- 2010 Camp Layout Map

Location of camp facilities and fuel caches in relation to local topographic features and water sources.