

**Final Land Use Plan
Land Use Permit #N2003C0033
Ashton Mining (Northwest Territories) Ltd.**

Introduction

Class "A" Land Use Permit N2003C0033 was issued to Ashton Mining (Northwest Territories) Ltd. (a wholly owned subsidiary of Stornoway Diamond Corporation) in September of 2003 for a period of two years.

The original permit was issued for a land use area comprised of approximately 220 mineral claims and the establishment of temporary camps at 4 possible locations. The main purpose of the land use operation was to conduct ground geophysical surveys, till sampling, and drilling activities.

The land use license authorized 4 possible camp locations however only 2 were ever utilized.

<i>RJ Camp</i>	Lat: -113.046370	Long: 66.729690
<i>Phantom Camp</i>	Lat: -112.858328	Long: 67.210523

This license was originally issued for a two year period expiring on September 22, 2005 however extension requests were submitted for 1 year periods in 2005, 2006 and 2007.

In 2006 N2003C0033 was assigned to Vaaldiam Resources Ltd. who, under an option agreement with Ashton Mining (Northwest Territories) Ltd., conducted a sampling program on selected properties covered under the authority of this land use license.

Upon Vaaldiam Resources Limited giving notice of their termination of the aforementioned option agreement in 2007 the land use license was assigned back to the Ashton Mining (Northwest Territories) Ltd.

Land Use Area

Please see Appendix "B" for a listing of the mineral claims comprising the land use area covered under the authority of this license. At the time of the application for this land use license the Eokuk property contained 18 claims, the James River property 41 claims, the Kikerk Lake property 15 claims, the Kim property 52 claims, the Ric property 49 claims and the Vic property 45 claims.

Over the course of the 5 year period for which this license was valid some of these claims were allowed to lapse as the areas of interest were narrowed down on each of the respective properties.

Land Use Activities – 2003

A winter drilling program took place on the Kim, Ric and Kikerk Lake properties beginning on April 3, 2003 and finishing on May 14, 2003. During this time 10 drill holes were completed for a total of 913.2 meters of drilling.

In the winter of 2003 a series of ground geophysical surveys were conducted on the Kim, Ric and Kikerk Lake properties beginning on March 16 and completed by April 26, 2003. TDEM, Magnetic Line, and MaxMin EM surveys were conducted on selected targets on all 3 of these properties.

The summer program for 2003 began on July 3, 2003 and was completed on September 8, 2003. During this time a regional sampling program was conducted on selected mineral claims on each of the Eokuk, James River, Kikerk Lake, Kim, Ric and Vic properties, and a total of 1333 samples was collected.

The RJ camp was used as a base for all of the land use operations conducted in 2003.

Total land use calculation for 2003 – 10 drill sites x 400m² per site = 4,000 m² (0.4 ha)

Land Use Activities – 2004

In May of 2004 a small crew of contract personnel conducted ground geophysical surveys over selected targets on the Ric and Kim properties. The crew utilized the RJ camp from the period of May 8, 2004 to May 26, 2004.

The RJ camp was mobilized July 5, 2004 and demobilized on August 31, 2004. During this time a six person crew collected 1207 samples from selected mineral claims covered under the authority of this land use permit.

No drilling activities took place under the authority of this license during 2004.

Total land use calculation for 2004 – 0 ha

Land Use Activities – 2005

In the winter of 2005 a short drilling program was conducted on selected targets on the Ric property. The RJ camp was utilized from March 15, 2005 to April 5, 2005 for a total of 21 days. During this time a small crew completed 3 drill holes for a total 499.3 meters of drilling.

The Phantom camp was utilized from July 15, 2005 to August 19, 2005, for a total of 33 days. During this time a short drill program was conducted on selected targets on the Kikerk Lake property which involved the completion of 4 drill holes for a total of 381.9 meters of drilling. During the summer program a regional till sampling program was also conducted on selected claims from each of the properties. A total of 584 till samples were collected in 2005.

Total land use calculation for 2005 – 7 drill sites x 400m² per site = 2800m² (0.28 ha)

Land Use Activities – 2006

In 2006, operating under an option agreement between Ashton Mining (Northwest Territories) Ltd., Vaaldiam Resources Limited conducted a sampling program during the months of August and September. During this time a 100 ton kimberlite sample was collected from the Kim property, a 1000 kg kimberlite sample was collected from the Ric property, and 136 till samples were collected from specific mineral claims on the Kim and Vic properties.

The Phantom camp was utilized by the crew contracted by Vaaldiam Resources Limited to conduct the 2006 land use operation, and during this time the land use permit was assigned to Vaaldiam Resources Limited.

Total land use calculation for 2006 – 0 ha

Land Use Activities – 2007

No land use activities were conducted during 2007 under the authority of this land use license, and in 2007 the land use license was assigned back to Ashton Mining (Northwest Territories) Ltd.

Abandonment and Reclamation Activities

The exploration activities conducted under the authority of this land use permit were all low impact in nature and scope and upon completion of the abandonment and reclamation procedures specific to each activity, left little to no evidence of the land use operation.

Till sampling activities, which were primarily helicopter supported, involved the collection of 2kg to 20kg bags of unconsolidated material using ordinary hand shovels. Upon completion of the collection of each sample the ground was typically recontoured to ensure that no divots were left that could prove dangerous to wildlife or traditional users of the land.

Ground geophysics requires a control grid to be established involving the placement of wooden pickets at regularly spaced intervals. The established grid was then traversed by a ground crew with a hand held geophysical instrument which causes no damage to wildlife or vegetation. All of the land use area utilized during this activity was preserved its original condition.

The drilling activities that took place under the authority of this land use permit were entirely helicopter supported (i.e. transport of drill rig and personnel), and caused minimal disturbance to the land use area.

Each drill site used a maximum area of 20x20m, or 400m², and upon the completion of each drill hole the tubular metal casing was removed or cut-off at ground level, and all materials (including empty fuel drums) were removed from the drill site area. The average time spent at each drill site was typically 2.5 days.

The 100 ton kimberlite sample that was collected during the 2006 exploration program conducted by Vaaldiam Resources Limited was completed exclusively through the use

of hand tools (no mechanized equipment was utilized) and due to the nature of the terrain and the location of the extraction site there was little evidence of the trenching activity upon completion of the land use operation.

At the end of each season each of the camp facilities (if utilized) would be demobilized and winterized, and during the summer of 2008 both of the temporary exploration camps were removed and final abandonment and reclamation activities conducted.

From July 20, 2008 to July 24, 2008 a contract crew removed all equipment, tent frames and fuel drums from the RJ camp location, and from July 25, 2008 to July 30, 2008 similar reclamation activities were conducted at the Phantom camp location.

Tent frames were burned, the ashes raked for any left over nails or metal components, and domestic items (fridges, etc,) and fuel were backhauled to Yellowknife for proper disposal at an approved facility.

Please see Appendix "C" for photographs of the reclaimed areas.

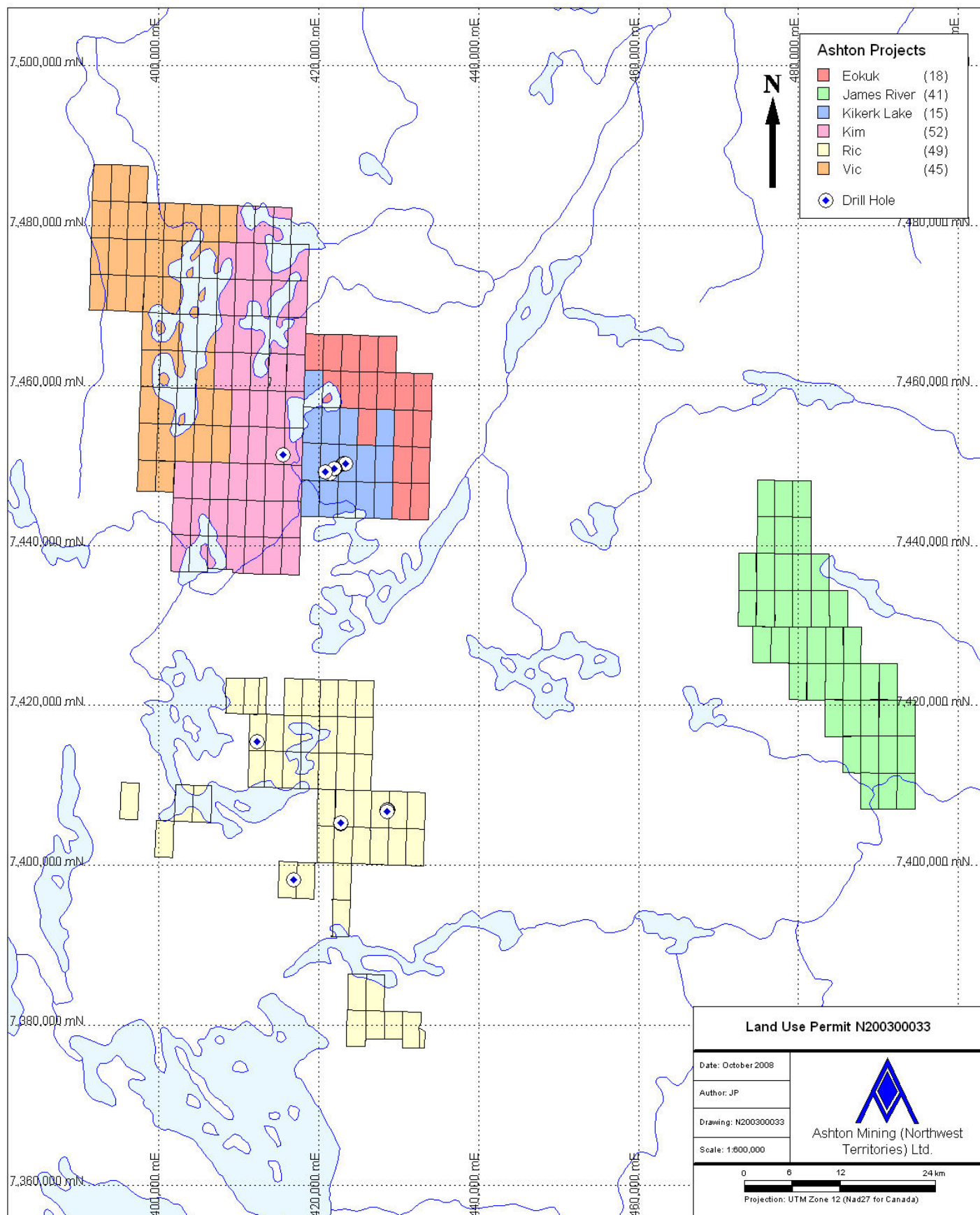
Conclusion

During the course of the land use operation conducted under the authority of land use license N2003C0033 the land use area utilized for drilling activities has been calculated to be 0.68 hectares.

At this time, all abandonment and reclamation activities have been completed for the land use operation conducted under the authority of this land use license and therefore Ashton Mining (Northwest Territories) Ltd. respectfully requests the official closure of land use license N2003C0033.

Appendix “A”

Figure: Original Land Use Area and Drill Hole Locations



Appendix “B”

List of Claims Comprising Original Land Use Area

Eokuk Property Summary

<i>Claim Name</i>	<i>Permit Number</i>	<i>Area</i>	<i>Recording Date</i>	<i>Anniversary Date</i>	<i>Filing Date</i>	<i>Claim Holder</i>	<i>Holder Percent</i>
CW033	F71813	2582.5Acres	Jul 03, 2001	Jul 03, 2003	Oct 01, 2003	Dave Pickston	100.00
CW034	F71814	2582.5Acres	Jul 03, 2001	Jul 03, 2003	Oct 01, 2003	Dave Pickston	100.00
CW035	F71815	2582.5Acres	Jul 03, 2001	Jul 03, 2003	Oct 01, 2003	Dave Pickston	100.00
CW036	F71816	2582.5Acres	Jul 03, 2001	Jul 03, 2003	Oct 01, 2003	Dave Pickston	100.00
CW037	F71817	2582.5Acres	Jul 03, 2001	Jul 03, 2003	Oct 01, 2003	Dave Pickston	100.00
CW038	F71818	2582.5Acres	Jul 03, 2001	Jul 03, 2003	Oct 01, 2003	Dave Pickston	100.00
CW039	F71819	2582.5Acres	Jul 03, 2001	Jul 03, 2003	Oct 01, 2003	Dave Pickston	100.00
CW040	F71820	2582.5Acres	Jul 03, 2001	Jul 03, 2003	Oct 01, 2003	Dave Pickston	100.00
CW041	F71821	2582.5Acres	Jul 03, 2001	Jul 03, 2003	Oct 01, 2003	Dave Pickston	100.00
CW042	F71822	2582.5Acres	Jul 03, 2001	Jul 03, 2003	Oct 01, 2003	Dave Pickston	100.00
SB001	F73311	2582.5Acres	Sep 25, 2001	Sep 25, 2003	Dec 24, 2003	Dave Pickston	100.00
SB002	F73312	2582.5Acres	Sep 25, 2001	Sep 25, 2003	Dec 24, 2003	Dave Pickston	100.00
SB003	F73313	2582.5Acres	Sep 25, 2001	Sep 25, 2003	Dec 24, 2003	Dave Pickston	100.00
SB004	F73314	2582.5Acres	Sep 25, 2001	Sep 25, 2003	Dec 24, 2003	Dave Pickston	100.00
SB005	F73315	2582.5Acres	Sep 25, 2001	Sep 25, 2003	Dec 24, 2003	Dave Pickston	100.00
SB006	F73316	2582.5Acres	Sep 25, 2001	Sep 25, 2003	Dec 24, 2003	Dave Pickston	100.00
Who001	F69907	2582.5Acres	Sep 25, 2001	Sep 25, 2003	Dec 24, 2003	AMNWT	100.00
Who002	F69908	2582.5Acres	Sep 25, 2001	Sep 25, 2003	Dec 24, 2003	AMNWT	100.00

Total Acres **46485**

of Claims **18**

James River Property Summary

<i>Claim Name</i>	<i>Permit Number</i>	<i>Area</i>	<i>Recording Date</i>	<i>Anniversary Date</i>	<i>Filing Date</i>	<i>Claim Holder</i>	<i>Holder Percent</i>
DP001	F75121	2582.5Acres	Jan 29, 2002	Jan 29, 2004	Apr 28, 2004	AMNWT	100.00
DP002	F75122	2582.5Acres	Jan 29, 2002	Jan 29, 2004	Apr 28, 2004	AMNWT	100.00
DP003	F75123	2582.5Acres	Jan 29, 2002	Jan 29, 2004	Apr 28, 2004	AMNWT	100.00
DP004	F75124	2582.5Acres	Jan 29, 2002	Jan 29, 2004	Apr 28, 2004	AMNWT	100.00
DP005	F75125	2582.5Acres	Jan 29, 2002	Jan 29, 2004	Apr 28, 2004	AMNWT	100.00
DP006	F75126	2582.5Acres	Jan 29, 2002	Jan 29, 2004	Apr 28, 2004	AMNWT	100.00
DP007	F75127	2582.5Acres	Jan 29, 2002	Jan 29, 2004	Apr 28, 2004	AMNWT	100.00
DP008	F75128	2582.5Acres	Jan 29, 2002	Jan 29, 2004	Apr 28, 2004	AMNWT	100.00
DP009	F75129	2582.5Acres	Jan 29, 2002	Jan 29, 2004	Apr 28, 2004	AMNWT	100.00
DP010	F75130	2582.5Acres	Jan 29, 2002	Jan 29, 2004	Apr 28, 2004	AMNWT	100.00
DP011	F75131	2582.5Acres	Jan 29, 2002	Jan 29, 2004	Apr 28, 2004	AMNWT	100.00
DP012	F75132	2582.5Acres	Jan 29, 2002	Jan 29, 2004	Apr 28, 2004	AMNWT	100.00
DP013	F75133	2582.5Acres	Jan 29, 2002	Jan 29, 2004	Apr 28, 2004	AMNWT	100.00
DP014	F75134	2582.5Acres	Jan 29, 2002	Jan 29, 2004	Apr 28, 2004	AMNWT	100.00
DP015	F75135	2582.5Acres	Jan 29, 2002	Jan 29, 2004	Apr 28, 2004	AMNWT	100.00
DP016	F75136	2582.5Acres	Jan 29, 2002	Jan 29, 2004	Apr 28, 2004	AMNWT	100.00
DP017	F75137	2582.5Acres	Jan 29, 2002	Jan 29, 2004	Apr 28, 2004	AMNWT	100.00
DP018	F75138	2582.5Acres	Jan 29, 2002	Jan 29, 2004	Apr 28, 2004	AMNWT	100.00
DP019	F75139	2582.5Acres	Jan 29, 2002	Jan 29, 2004	Apr 28, 2004	AMNWT	100.00
DP020	F75140	2582.5Acres	Jan 29, 2002	Jan 29, 2004	Apr 28, 2004	AMNWT	100.00
DP021	F75141	2582.5Acres	Jan 29, 2002	Jan 29, 2004	Apr 28, 2004	AMNWT	100.00
DP022	F75142	2582.5Acres	Jan 29, 2002	Jan 29, 2004	Apr 28, 2004	AMNWT	100.00
DP023	F75143	2582.5Acres	Jan 29, 2002	Jan 29, 2004	Apr 28, 2004	AMNWT	100.00
DP024	F75144	2582.5Acres	Jan 29, 2002	Jan 29, 2004	Apr 28, 2004	AMNWT	100.00
DP025	F75145	2582.5Acres	Jan 29, 2002	Jan 29, 2004	Apr 28, 2004	AMNWT	100.00
DP026	F75146	2582.5Acres	Jan 29, 2002	Jan 29, 2004	Apr 28, 2004	AMNWT	100.00
DP027	F75147	2582.5Acres	Jan 29, 2002	Jan 29, 2004	Apr 28, 2004	AMNWT	100.00
DP028	F75148	2582.5Acres	Jan 29, 2002	Jan 29, 2004	Apr 28, 2004	AMNWT	100.00
DP029	F75149	2582.5Acres	Jan 29, 2002	Jan 29, 2004	Apr 28, 2004	AMNWT	100.00
DP030	F75150	2582.5Acres	Jan 29, 2002	Jan 29, 2004	Apr 28, 2004	AMNWT	100.00
DP031	F75151	2582.5Acres	Jan 29, 2002	Jan 29, 2004	Apr 28, 2004	AMNWT	100.00
DP032	F75152	2582.5Acres	Jan 29, 2002	Jan 29, 2004	Apr 28, 2004	AMNWT	100.00
DP033	F75153	2582.5Acres	Jan 29, 2002	Jan 29, 2004	Apr 28, 2004	AMNWT	100.00
DP034	F75154	2582.5Acres	Jan 29, 2002	Jan 29, 2004	Apr 28, 2004	AMNWT	100.00
DP035	F75155	2582.5Acres	Jan 29, 2002	Jan 29, 2004	Apr 28, 2004	AMNWT	100.00
DP036	F75156	2582.5Acres	Jan 29, 2002	Jan 29, 2004	Apr 28, 2004	AMNWT	100.00

<i>Claim Name</i>	<i>Permit Number</i>	<i>Area</i>	<i>Recording Date</i>	<i>Anniversary Date</i>	<i>Filing Date</i>	<i>Claim Holder</i>	<i>Holder Percent</i>
DP037	F75157	2582.5Acres	Jan 29, 2002	Jan 29, 2004	Apr 28, 2004	AMNWT	100.00
DP038	F75158	2266.5Acres	Jan 29, 2002	Jan 29, 2004	Apr 28, 2004	AMNWT	100.00
DP039	F75159	2582.5Acres	Jan 29, 2002	Jan 29, 2004	Apr 28, 2004	AMNWT	100.00
DP040	F75160	2582.5Acres	Jan 29, 2002	Jan 29, 2004	Apr 28, 2004	AMNWT	100.00
DP041	F75161	2384.5Acres	Jan 29, 2002	Jan 29, 2004	Apr 28, 2004	AMNWT	100.00

Total Acres 105368.5

of Claims 41

Kikerk Lake Property Summary

<i>Claim Name</i>	<i>Permit Number</i>	<i>Area</i>	<i>Recording Date</i>	<i>Anniversary Date</i>	<i>Filing Date</i>	<i>Claim Holder</i>	<i>Holder Percent</i>
KOT005	F35905	2582.5Acres	Aug 05, 1993	Aug 05, 2003	Nov 03, 2003	AMNWT	100.00
KOT006	F35906	2582.5Acres	Aug 05, 1993	Aug 05, 2003	Nov 03, 2003	AMNWT	100.00
KOT007	F35907	2582.5Acres	Aug 05, 1993	Aug 05, 2003	Nov 03, 2003	AMNWT	100.00
KOT008	F35908	2582.5Acres	Aug 05, 1993	Aug 05, 2003	Nov 03, 2003	AMNWT	100.00
KOT013	F35913	2582.5Acres	Aug 05, 1993	Aug 05, 2003	Nov 03, 2003	AMNWT	100.00
KOT014	F35914	2582.5Acres	Aug 05, 1993	Aug 05, 2003	Nov 03, 2003	AMNWT	100.00
KOT015	F35915	2582.5Acres	Aug 05, 1993	Aug 05, 2003	Nov 03, 2003	AMNWT	100.00
KOT026	F35926	2582.5Acres	Aug 05, 1993	Aug 05, 2003	Nov 03, 2003	AMNWT	100.00
KOT027	F35927	2582.5Acres	Aug 05, 1993	Aug 05, 2003	Nov 03, 2003	AMNWT	100.00
KOT028	F35928	2582.5Acres	Aug 05, 1993	Aug 05, 2003	Nov 03, 2003	AMNWT	100.00
KOT033	F35933	2582.5Acres	Aug 05, 1993	Aug 05, 2003	Nov 03, 2003	AMNWT	100.00
KOT034	F35934	2582.5Acres	Aug 05, 1993	Aug 05, 2003	Nov 03, 2003	AMNWT	100.00
KOT046	F35946	2582.5Acres	Aug 05, 1993	Aug 05, 2003	Nov 03, 2003	AMNWT	100.00
KOT047	F35947	2582.5Acres	Aug 05, 1993	Aug 05, 2003	Nov 03, 2003	AMNWT	100.00
KOT048	F35948	2582.5Acres	Aug 05, 1993	Aug 05, 2003	Nov 03, 2003	AMNWT	100.00

Total Acres **38737.5**

of Claims **15**

Kim Property Summary

<i>Claim Name</i>	<i>Permit Number</i>	<i>Area</i>	<i>Recording Date</i>	<i>Anniversary Date</i>	<i>Filing Date</i>	<i>Claim Holder</i>	<i>Holder Percent</i>
CW014	F70737	2582.5Acres	Jan 26, 2001	Jan 26, 2003	Apr 26, 2003	AMNWT	100.00
JIM001	F69902	2582.5Acres	Sep 08, 2000	Sep 08, 2003	Dec 07, 2003	AMNWT	100.00
JIM002	F69903	2582.5Acres	Sep 08, 2000	Sep 08, 2003	Dec 07, 2003	AMNWT	100.00
JIM003	F69904	2582.5Acres	Sep 08, 2000	Sep 08, 2003	Dec 07, 2003	AMNWT	100.00
JIM004	F69905	2582.5Acres	Sep 08, 2000	Sep 08, 2003	Dec 07, 2003	AMNWT	100.00
JIM005	F69906	2582.5Acres	Sep 08, 2000	Sep 08, 2003	Dec 07, 2003	AMNWT	100.00
KIM001	F67663	2582.5Acres	Sep 30, 1999	Sep 30, 2003	Dec 29, 2003	AMNWT	100.00
KIM002	F67664	2582.5Acres	Sep 30, 1999	Sep 30, 2003	Dec 29, 2003	AMNWT	100.00
KIM003	F67665	2582.5Acres	Sep 30, 1999	Sep 30, 2003	Dec 29, 2003	AMNWT	100.00
KIM004	F67666	2582.5Acres	Sep 30, 1999	Sep 30, 2009	Dec 29, 2009	AMNWT	100.00
KIM005	F67667	2582.5Acres	Sep 30, 1999	Sep 30, 2009	Dec 29, 2009	AMNWT	100.00
KIM006	F67668	2582.5Acres	Sep 30, 1999	Sep 30, 2003	Dec 29, 2003	AMNWT	100.00
KIM007	F67669	2582.5Acres	Sep 30, 1999	Sep 30, 2003	Dec 29, 2003	AMNWT	100.00
KIM008	F67670	2582.5Acres	Sep 30, 1999	Sep 30, 2003	Dec 29, 2003	AMNWT	100.00
KIM009	F67671	2582.5Acres	Sep 30, 1999	Sep 30, 2003	Dec 29, 2003	AMNWT	100.00
KIM010	F67672	2582.5Acres	Sep 30, 1999	Sep 30, 2003	Dec 29, 2003	AMNWT	100.00
KIM011	F67673	2582.5Acres	Sep 30, 1999	Sep 30, 2003	Dec 29, 2003	AMNWT	100.00
KIM012	F67674	2582.5Acres	Sep 30, 1999	Sep 30, 2003	Dec 29, 2003	AMNWT	100.00
KIM013	F67675	2582.5Acres	Sep 30, 1999	Sep 30, 2003	Dec 29, 2003	AMNWT	100.00
KIM014	F67676	2582.5Acres	Sep 30, 1999	Sep 30, 2003	Dec 29, 2003	AMNWT	100.00
KIM015	F67677	2582.5Acres	Sep 30, 1999	Sep 30, 2003	Dec 29, 2003	AMNWT	100.00
KIM016	F68405	2582.5Acres	Oct 08, 1999	Oct 08, 2003	Jan 06, 2004	AMNWT	100.00
KIM017	F68406	2582.5Acres	Oct 08, 1999	Oct 08, 2003	Jan 06, 2004	AMNWT	100.00
KIM018	F68407	2582.5Acres	Oct 08, 1999	Oct 08, 2003	Jan 06, 2004	AMNWT	100.00
KIM019	F68408	2582.5Acres	Oct 08, 1999	Oct 08, 2003	Jan 06, 2004	AMNWT	100.00
KIM020	F68409	2582.5Acres	Oct 08, 1999	Oct 08, 2003	Jan 06, 2004	AMNWT	100.00
KIM021	F68410	2582.5Acres	Oct 08, 1999	Oct 08, 2003	Jan 06, 2004	AMNWT	100.00
KIM022	F68411	2582.5Acres	Oct 08, 1999	Oct 08, 2003	Jan 06, 2004	AMNWT	100.00
KIM023	F68412	2582.5Acres	Oct 08, 1999	Oct 08, 2003	Jan 06, 2004	AMNWT	100.00
KIM024	F68413	2582.5Acres	Oct 08, 1999	Oct 08, 2003	Jan 06, 2004	AMNWT	100.00
KIM025	F68414	2582.5Acres	Oct 08, 1999	Oct 08, 2003	Jan 06, 2004	AMNWT	100.00
KIM026	F68415	2582.5Acres	Oct 08, 1999	Oct 08, 2003	Jan 06, 2004	AMNWT	100.00
KIM027	F68416	2582.5Acres	Oct 08, 1999	Oct 08, 2003	Jan 06, 2004	AMNWT	100.00
KIM028	F68417	2582.5Acres	Oct 08, 1999	Oct 08, 2003	Jan 06, 2004	AMNWT	100.00
KIM029	F68418	2582.5Acres	Oct 08, 1999	Oct 08, 2003	Jan 06, 2004	AMNWT	100.00
KIM030	F68419	2582.5Acres	Oct 08, 1999	Oct 08, 2003	Jan 06, 2004	AMNWT	100.00

<i>Claim Name</i>	<i>Permit Number</i>	<i>Area</i>	<i>Recording Date</i>	<i>Anniversary Date</i>	<i>Filing Date</i>	<i>Claim Holder</i>	<i>Holder Percent</i>
KIM031	F68420	2582.5Acres	Oct 08, 1999	Oct 08, 2003	Jan 06, 2004	AMNWT	100.00
KIM032	F68421	2582.5Acres	Oct 06, 1999	Oct 06, 2003	Jan 04, 2004	AMNWT	100.00
KIM033	F68422	2582.5Acres	Oct 06, 1999	Oct 06, 2003	Jan 04, 2004	AMNWT	100.00
KIM034	F68423	2582.5Acres	Oct 06, 1999	Oct 06, 2003	Jan 04, 2004	AMNWT	100.00
KIM035	F69986	2582.5Acres	Sep 08, 2000	Sep 08, 2003	Dec 07, 2003	AMNWT	100.00
KIM036	F69987	2582.5Acres	Sep 08, 2000	Sep 08, 2003	Dec 07, 2003	AMNWT	100.00
KIM037	F69988	2582.5Acres	Sep 08, 2000	Sep 08, 2003	Dec 07, 2003	AMNWT	100.00
KIM038	F69989	2582.5Acres	Sep 08, 2000	Sep 08, 2003	Dec 07, 2003	AMNWT	100.00
KIM039	F69990	2582.5Acres	Sep 08, 2000	Sep 08, 2003	Dec 07, 2003	AMNWT	100.00
KIM040	F69991	2582.5Acres	Sep 08, 2000	Sep 08, 2003	Dec 07, 2003	AMNWT	100.00
KIM041	F69992	2582.5Acres	Sep 08, 2000	Sep 08, 2003	Dec 07, 2003	AMNWT	100.00
KIM042	F69993	2582.5Acres	Sep 08, 2000	Sep 08, 2003	Dec 07, 2003	AMNWT	100.00
KIM043	F69994	2475.5Acres	Sep 08, 2000	Sep 08, 2003	Dec 07, 2003	AMNWT	100.00
KIM044	F69995	2304.5Acres	Sep 08, 2000	Sep 08, 2003	Dec 07, 2003	AMNWT	100.00
KIM045	F69996	2582.5Acres	Sep 08, 2000	Sep 08, 2003	Dec 07, 2003	AMNWT	100.00
KIM046	F69997	2582.5Acres	Sep 08, 2000	Sep 08, 2003	Dec 07, 2003	AMNWT	100.00

Total Acres **133905**

of Claims **52**

Ric Property Summary

<i>Claim Name</i>	<i>Permit Number</i>	<i>Area</i>	<i>Recording Date</i>	<i>Anniversary Date</i>	<i>Filing Date</i>	<i>Claim Holder</i>	<i>Holder Percent</i>
AB001	F70434	2582.5Acres	Oct 31, 2000	Oct 31, 2003	Jan 29, 2004	AMNWT	100.00
AB002	F70435	2582.5Acres	Oct 31, 2000	Oct 31, 2003	Jan 29, 2004	AMNWT	100.00
AB003	F70436	2582.5Acres	Oct 31, 2000	Oct 31, 2003	Jan 29, 2004	AMNWT	100.00
AB004	F70437	2582.5Acres	Oct 31, 2000	Oct 31, 2003	Jan 29, 2004	AMNWT	100.00
AB005	F70438	2582.5Acres	Oct 31, 2000	Oct 31, 2003	Jan 29, 2004	AMNWT	100.00
RIC002	F69962	1132Acres	Sep 08, 2000	Sep 08, 2003	Dec 07, 2003	AMNWT	100.00
RIC003	F63413	2220.95Acres	May 23, 1997	May 23, 2005	Aug 21, 2005	AMNWT	100.00
RIC004	F63414	2220.95Acres	May 23, 1997	May 23, 2004	Aug 21, 2004	AMNWT	100.00
RIC009	F63419	2582.5Acres	May 23, 1997	May 23, 2007	Aug 21, 2007	AMNWT	100.00
RIC010	F63420	2582.5Acres	May 23, 1997	May 23, 2003	Aug 21, 2003	AMNWT	100.00
RIC017	F63427	2582.5Acres	May 23, 1997	May 23, 2004	Aug 21, 2004	AMNWT	100.00
RIC019	F63429	2582.5Acres	May 23, 1997	May 23, 2007	Aug 21, 2007	AMNWT	100.00
RIC020	F63430	2582.5Acres	May 23, 1997	May 23, 2007	Aug 21, 2007	AMNWT	100.00
RIC021	F69963	2582.5Acres	Sep 08, 2000	Sep 08, 2003	Dec 07, 2003	AMNWT	100.00
RIC022	F69964	2582.5Acres	Sep 08, 2000	Sep 08, 2003	Dec 07, 2003	AMNWT	100.00
RIC023	F63433	2582.5Acres	May 23, 1997	May 23, 2007	Aug 21, 2007	AMNWT	100.00
RIC024	F63434	2582.5Acres	May 23, 1997	May 23, 2004	Aug 21, 2004	AMNWT	100.00
RIC025	F63435	2582.5Acres	May 23, 1997	May 23, 2003	Aug 21, 2003	AMNWT	100.00
RIC029	F63439	2582.5Acres	May 23, 1997	May 23, 2003	Aug 21, 2003	AMNWT	100.00
RIC030	F63440	2582.5Acres	May 23, 1997	May 23, 2003	Aug 21, 2003	AMNWT	100.00
RIC031	F69965	2582.5Acres	Sep 08, 2000	Sep 08, 2003	Dec 07, 2003	AMNWT	100.00
RIC033	F69966	2582.5Acres	Sep 08, 2000	Sep 08, 2003	Dec 07, 2003	AMNWT	100.00
RIC034	F70444	2582.5Acres	Oct 31, 2000	Oct 31, 2003	Jan 29, 2004	AMNWT	100.00
RIC035	F70445	2582.5Acres	Oct 31, 2000	Oct 31, 2003	Jan 29, 2004	AMNWT	100.00
RIC036	F63446	2582.5Acres	May 23, 1997	May 23, 2003	Aug 21, 2003	AMNWT	100.00
RIC037	F63447	2582.5Acres	May 23, 1997	May 23, 2003	Aug 21, 2003	AMNWT	100.00
RIC040	F63450	2582.5Acres	May 23, 1997	May 23, 2003	Aug 21, 2003	AMNWT	100.00
RIC041	F63451	2479.2Acres	May 23, 1997	May 23, 2003	Aug 21, 2003	AMNWT	100.00
RIC042	F70442	2530.85Acres	Oct 31, 2000	Oct 31, 2003	Jan 29, 2004	AMNWT	100.00
RIC043	F70443	2582.5Acres	Oct 31, 2000	Oct 31, 2003	Jan 29, 2004	AMNWT	100.00
RIC044	F63454	2582.5Acres	May 23, 1997	May 23, 2003	Aug 21, 2003	AMNWT	100.00
RIC047	F63457	2582.5Acres	May 23, 1997	May 23, 2003	Aug 21, 2003	AMNWT	100.00
RIC048	F63458	2582.5Acres	May 23, 1997	May 23, 2003	Aug 21, 2003	AMNWT	100.00
RIC052	F63462	2582.5Acres	May 23, 1997	May 23, 2003	Aug 21, 2003	AMNWT	100.00
RIC053	F63463	1962.7Acres	May 23, 1997	May 23, 2003	Aug 21, 2003	AMNWT	100.00
RIC054	F63464	1962.7Acres	May 23, 1997	May 23, 2003	Aug 21, 2003	AMNWT	100.00

<i>Claim Name</i>	<i>Permit Number</i>	<i>Area</i>	<i>Recording Date</i>	<i>Anniversary Date</i>	<i>Filing Date</i>	<i>Claim Holder</i>	<i>Holder Percent</i>
RIC059	F63469	2582.5Acres	May 23, 1997	May 23, 2003	Aug 21, 2003	AMNWT	100.00
RIC071	F63481	2505.9Acres	May 23, 1997	May 23, 2003	Aug 21, 2003	AMNWT	100.00
RIC072	F63482	243.3Acres	May 23, 1997	May 23, 2004	Aug 21, 2004	AMNWT	100.00
RIC102	F67678	2582.5Acres	Sep 30, 1999	Sep 30, 2003	Dec 29, 2003	AMNWT	100.00
RIC103	F67679	2582.5Acres	Sep 30, 1999	Sep 30, 2003	Dec 29, 2003	AMNWT	100.00
RIC104	F67680	2582.5Acres	Sep 30, 1999	Sep 30, 2003	Dec 29, 2003	AMNWT	100.00
RIC105	F67681	2582.5Acres	Sep 30, 1999	Sep 30, 2003	Dec 29, 2003	AMNWT	100.00
RIC106	F67682	2582.5Acres	Sep 30, 1999	Sep 30, 2003	Dec 29, 2003	AMNWT	100.00
RIC107	F67683	2582.5Acres	Sep 30, 1999	Sep 30, 2003	Dec 29, 2003	AMNWT	100.00
RIC108	F67684	2582.5Acres	Sep 30, 1999	Sep 30, 2003	Dec 29, 2003	AMNWT	100.00
RICE001	F69900	1879Acres	Sep 08, 2000	Sep 08, 2003	Dec 07, 2003	AMNWT	100.00
RICE002	F69901	2578Acres	Sep 08, 2000	Sep 08, 2003	Dec 07, 2003	AMNWT	100.00
SB032	F73342	2582.5Acres	Sep 25, 2001	Sep 25, 2003	Dec 24, 2003	Dave Pickston	100.00

Total Acres 119850.55

of Claims 49

Vic Property Summary

<i>Claim Name</i>	<i>Permit Number</i>	<i>Area</i>	<i>Recording Date</i>	<i>Anniversary Date</i>	<i>Filing Date</i>	<i>Claim Holder</i>	<i>Holder Percent</i>
CW001	F70724	2582.5Acres	Feb 12, 2001	Feb 12, 2003	May 13, 2003	AMNWT	100.00
CW002	F70725	2582.5Acres	Jan 26, 2001	Jan 26, 2003	Apr 26, 2003	AMNWT	100.00
CW003	F70726	2582.5Acres	Jan 26, 2001	Jan 26, 2003	Apr 26, 2003	AMNWT	100.00
CW004	F70727	2582.5Acres	Feb 12, 2001	Feb 12, 2003	May 13, 2003	AMNWT	100.00
CW005	F70728	2582.5Acres	Jan 26, 2001	Jan 26, 2003	Apr 26, 2003	AMNWT	100.00
CW006	F70729	2582.5Acres	Jan 26, 2001	Jan 26, 2003	Apr 26, 2003	AMNWT	100.00
CW007	F70730	2582.5Acres	Feb 12, 2001	Feb 12, 2003	May 13, 2003	AMNWT	100.00
CW008	F70731	2582.5Acres	Jan 26, 2001	Jan 26, 2003	Apr 26, 2003	AMNWT	100.00
CW009	F70732	2582.5Acres	Jan 26, 2001	Jan 26, 2003	Apr 26, 2003	AMNWT	100.00
CW010	F70733	2582.5Acres	Feb 12, 2001	Feb 12, 2003	May 13, 2003	AMNWT	100.00
CW011	F70734	2582.5Acres	Jan 26, 2001	Jan 26, 2003	Apr 26, 2003	AMNWT	100.00
CW012	F70735	2582.5Acres	Jan 26, 2001	Jan 26, 2003	Apr 26, 2003	AMNWT	100.00
CW013	F70736	2582.5Acres	Jan 26, 2001	Jan 26, 2003	Apr 26, 2003	AMNWT	100.00
CW015	F70796	2582.5Acres	Jul 03, 2001	Jul 03, 2003	Oct 01, 2003	AMNWT	100.00
CW016	F70797	2582.5Acres	Jul 03, 2001	Jul 03, 2003	Oct 01, 2003	AMNWT	100.00
CW017	F70798	2582.5Acres	Jul 03, 2001	Jul 03, 2003	Oct 01, 2003	AMNWT	100.00
CW018	F70799	2188Acres	Jul 03, 2001	Jul 03, 2003	Oct 01, 2003	AMNWT	100.00
CW019	F70800	2188Acres	Jul 03, 2001	Jul 03, 2003	Oct 01, 2003	AMNWT	100.00
CW022	F67467	2582.5Acres	Jul 03, 2001	Jul 03, 2003	Oct 01, 2003	AMNWT	100.00
CW023	F67468	2582.5Acres	Jul 03, 2001	Jul 03, 2003	Oct 01, 2003	AMNWT	100.00
SB007	F73317	2582.5Acres	Sep 25, 2001	Sep 25, 2003	Dec 24, 2003	AMNWT	100.00
SB008	F73318	2582.5Acres	Sep 25, 2001	Sep 25, 2003	Dec 24, 2003	AMNWT	100.00
SB009	F73319	2582.5Acres	Sep 25, 2001	Sep 25, 2003	Dec 24, 2003	AMNWT	100.00
SB010	F73320	2582.5Acres	Sep 25, 2001	Sep 25, 2003	Dec 24, 2003	AMNWT	100.00
SB011	F73321	2582.5Acres	Sep 25, 2001	Sep 25, 2003	Dec 24, 2003	AMNWT	100.00
SB012	F73322	2582.5Acres	Sep 25, 2001	Sep 25, 2003	Dec 24, 2003	AMNWT	100.00
SB013	F73323	2582.5Acres	Sep 25, 2001	Sep 25, 2003	Dec 24, 2003	AMNWT	100.00
SB014	F73324	2582.5Acres	Sep 25, 2001	Sep 25, 2003	Dec 24, 2003	AMNWT	100.00
SB015	F73325	2582.5Acres	Sep 25, 2001	Sep 25, 2003	Dec 24, 2003	AMNWT	100.00
SB016	F73326	2582.5Acres	Sep 25, 2001	Sep 25, 2003	Dec 24, 2003	AMNWT	100.00
SB017	F73327	2582.5Acres	Sep 25, 2001	Sep 25, 2003	Dec 24, 2003	AMNWT	100.00
SB018	F73328	2582.5Acres	Sep 25, 2001	Sep 25, 2003	Dec 24, 2003	AMNWT	100.00
SB019	F73329	2582.5Acres	Sep 25, 2001	Sep 25, 2003	Dec 24, 2003	AMNWT	100.00
SB020	F73330	2582.5Acres	Sep 25, 2001	Sep 25, 2003	Dec 24, 2003	AMNWT	100.00
SB021	F73331	2582.5Acres	Sep 25, 2001	Sep 25, 2003	Dec 24, 2003	AMNWT	100.00
SB022	F73332	2582.5Acres	Sep 25, 2001	Sep 25, 2003	Dec 24, 2003	AMNWT	100.00

<i>Claim Name</i>	<i>Permit Number</i>	<i>Area</i>	<i>Recording Date</i>	<i>Anniversary Date</i>	<i>Filing Date</i>	<i>Claim Holder</i>	<i>Holder Percent</i>
SB023	F73333	2582.5Acres	Sep 25, 2001	Sep 25, 2003	Dec 24, 2003	AMNWT	100.00
SB024	F73334	2582.5Acres	Sep 25, 2001	Sep 25, 2003	Dec 24, 2003	AMNWT	100.00
SB025	F73335	2582.5Acres	Sep 25, 2001	Sep 25, 2003	Dec 24, 2003	AMNWT	100.00
SB026	F73336	2582.5Acres	Sep 25, 2001	Sep 25, 2003	Dec 24, 2003	AMNWT	100.00
SB027	F73337	2582.5Acres	Sep 25, 2001	Sep 25, 2003	Dec 24, 2003	AMNWT	100.00
SB028	F73338	2582.5Acres	Sep 25, 2001	Sep 25, 2003	Dec 24, 2003	AMNWT	100.00
SB029	F73339	2582.5Acres	Sep 25, 2001	Sep 25, 2003	Dec 24, 2003	AMNWT	100.00
SB030	F73340	2582.5Acres	Sep 25, 2001	Sep 25, 2003	Dec 24, 2003	AMNWT	100.00
SB031	F73341	2582.5Acres	Sep 25, 2001	Sep 25, 2003	Dec 24, 2003	AMNWT	100.00

Total Acres 115423.5

of Claims 45

Appendix “C”

Photographs of Reclaimed Camp Locations



***Reclaimed RJ Camp Location – Picture 1
July 2008***



***Reclaimed RJ Camp Location – Picture 2
July 2008***



*Reclaimed RJ Camp Location – Picture 3
July 2008*



***Reclaimed Phantom Camp Location – Picture 1
July 2008***



***Reclaimed Phantom Camp Location – Picture 2
July 2008***