

WESTSTAR RESOURCES CORPORATION

**ABANDONMENT & RESTORATION PLAN
ELLESMERE ISLAND COAL *PROJECT***

NORTH BAFFIN ISLAND, NUNAVUT

Submitted To: NWB, INAC, QIA

Submitted By: Dean Besserer, VP, APEX Geoscience

Submitted On: July 2, 2009

Table of Contents

	Page
1. Preamble	3
2. Introduction	3
3. Schedule	3
4. Infrastructure	4
5. Seasonal Shutdowns	4
6. Final Abandonment and Restoration	6
7. Emergency Contact Information	7
8. Appendix I – Maps, Figures & Photos	8

Weststar Exploration Program/Remote Camp Abandonment and Restoration Plan

1. Preamble

This Abandonment and Restoration (A&R) Plan has been prepared for Weststar exploration programs and remote camps. Although the 2009 exploration program will be based from an existing facility at Eureka, a camp could be established as early as 2010 to support this program. Camp locations will be selected during the 2009 field program and a suitable location will be determined with input from the communities. Once the location is finalised, the information will be submitted to the appropriate regulatory agencies for review and approval.

This Plan applies specifically to the Ellesmere Island coal Project in the North Baffin Region, Nunavut. A property map is included in Appendix I. Weststar endeavours to take every reasonable precaution toward ensuring the protection and conservation of the natural environment and the safety and health of all employees and contractors from any potential harmful effects of stored materials and operations. All plans, licences and permits will be reviewed with employees and contractors when hired and will comprise part of the orientation that each employee and contractor will receive upon arrival at the project. Copies of the plans will be available in the office tent for reference.

2. Introduction

The work proposed for this project consists of prospecting; staking; geological mapping; rock and soil/till sampling; geophysics, both ground and airborne; drilling; possibility of trenching (non-mechanical); fuel transport (fixed- and rotary-wing); establishment of fuel caches; and in 2010 the establishment of a camp.

Although the camp once established will be temporary, it is the company's desire to have the camp remain in position for the duration of the land use permits and water licence. No buildings, equipment or waste will remain once the project is complete.

3. Schedule

The final restoration of the future camp site will begin once the program is complete. All work under the Abandonment and Restoration Plan will be completed prior to the date of expiry of the land use permits and water licence unless a renewal is required and granted. Empty fuel drums will be removed from site regularly. Once a fuel cache is retired, a thorough inspection will be conducted. Any contamination will be cleaned up according to the Spill Contingency Plan and debris will be removed from the site.

4. Infrastructure – Fuel Caches

A fuel cache will be established to support the program. The maximum number of drums to be stored at the camp will be no more than:

- 100 drums of Aviation fuel
- 100 drums of diesel
- 5 gasoline
- 10 propane tanks

The fuel will be stored within secondary containment with bungs facing 3 and 9 o'clock. The fuel cache will be inspected daily. A spill kit will be located at the fuel cache. A Fuel Management Plan has been prepared as part of this application package and provides more detail on fuel storage and transport.

The camp, once constructed will most likely consist of:

- 12 – 14' x 16' insulated tents on wood frames. These tents function as sleep tents, an office, core tent and first aid station
- 2 – 14' x 32' insulated tent on wood frames. These tents function as the kitchen mess and the dry
- An outhouse facility
- A generator building to house a 20 kW diesel generator as well as a backup generator
- A helicopter landing area, and
- A garbage incineration area.

5. Seasonal Shutdown

Buildings and Contents

All tents will be dismantled and the canvas tents removed from site for drying and storage. Wood structures (generator shacks) and wood floors will be kept secured. Wooden bed frames will be turned upside down and secured to the wooden floors for over-winter storage. The generator will be removed from site for servicing and storage.

Water system

Pumps and hoses will be drained and dismantled. Pumps and hoses will be removed from site for servicing and storage.

Fuel caches and Chemical Storage

An inventory will be conducted prior to leaving at the end of the field season. A thorough inspection of all fuel caches will be completed and empty fuel drums will be removed from site. Tarps, or some other form of cover, will be placed over

the secondary containment structures containing the fuel drums to prevent snow from building up inside.

Chemicals will not be stored on site over winter. All chemicals, including cleaning products, will be removed from site for storage and or disposal.

Waste

Combustible waste: All combustible waste will be incinerated.

Grey water sump: The grey water sump will be inspected and covered securely for the winter. Stakes will be placed around the sump so that it is easily identifiable when the camp is opened up again each year.

Drill sites

The drill will be dismantled into its main components as per the drilling contractor procedure, packaged and secured along with its ancillary equipment and rods. The drill will be flown out by the drilling contractor if required or stored appropriately for the winter months.

All drill sites will be inspected for soil contamination. Any remaining waste will be taken to camp to be burned if possible or to be flown out to an approved disposal location. Greywater and sludge sumps will be filled and levelled.

Progressive reclamation is the ultimate goal so whenever practical, drill sites will be restored immediately after the drill has been moved to the next site.

Contamination Clean Up

Any soil around camp that has become contaminated and gone unnoticed will be treated as per the Spill Contingency Plan. Before and after photos will be taken to document the contamination and the clean up. These photos will make up part of the final report to be submitted to the Water Resource Inspector and the Qikiqtani Inuit Association following any spill and will also be attached as part of the Annual Report submitted to the Nunavut Water Board, the Qikiqtani Inuit Association and the Nunavut Impact Review Board.

Inspection and Documentation

A complete inspection will be conducted of all areas prior to seasonal closure. Photos will be taken to document the conditions prior to leaving the site for the winter. A full inventory will be conducted. These photographs and the information will comprise part of the annual reports that are submitted to the regulatory agencies.

6. Final Abandonment and Restoration

Buildings and Contents

All buildings will be dismantled and removed. All wooden structures including floors will either be burned or removed.

Equipment

All equipment, including pumps, will be dismantled and removed from the project area.

Fuel caches and Chemical Storage

All fuel drums will be removed. All areas where there have been fuel caches will be thoroughly inspected. Any contamination will be cleaned up as well as any debris removed. Contaminated soil will be handled as per the Spill Contingency Plan. Final photos will be taken of all fuel caches for inclusion in the final report.

All chemicals will be removed from site. Areas where chemicals have been stored will be inspected to ensure that there has been no contamination.

Sumps

All sumps will be inspected to ensure that there is no leaching or run-off. Sumps will be back-filled and levelled as required. Final photos will be taken.

Drill Sites

The drill will be dismantled into its main components as per the drilling contractor procedure, packaged and secured along with its ancillary equipment and rods. The drill will be flown out by the drilling contractor.

All drill sites will be inspected for soil contamination. Any remaining waste will be taken to camp to be burned if possible or to be flown out to an approved disposal location. Greywater and sludge sumps will be filled and levelled.

An inspection will be conducted to ensure that all drill sites are/have been restored and sumps have been covered and levelled.

Contamination Clean Up

Any contamination will be treated as per the Spill Contingency Plan. Before and after photos will be taken to document the contamination and the clean up. These photos will make up part of the final report to be submitted to the Water Resource Inspector and the Qikiqtani Inuit Association following any spill and will also be attached as part of the Annual Report submitted to the Nunavut Water Board and the Qikiqtani Inuit Association.

Inspection and Documentation

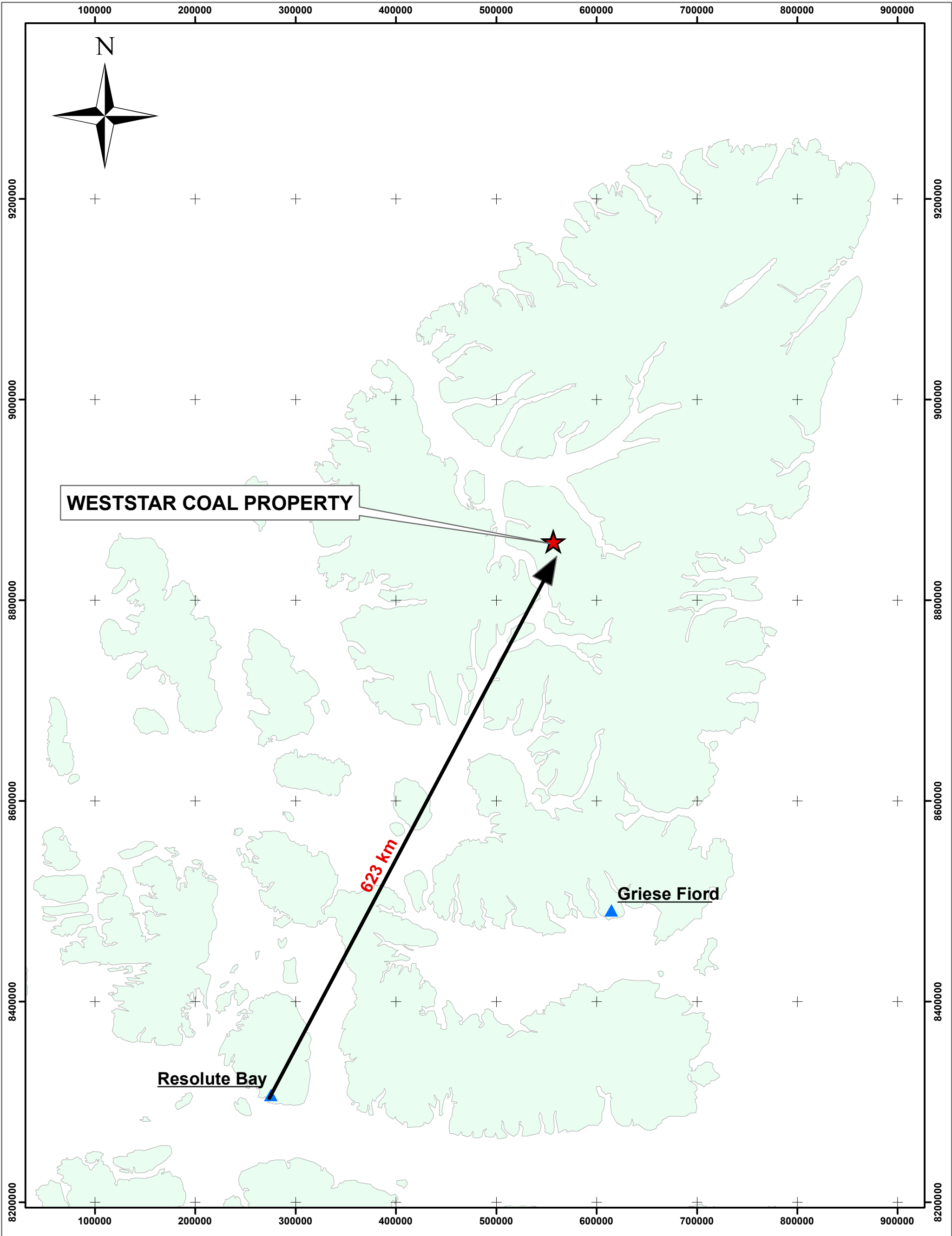
A complete inspection will be conducted of all areas prior to closure. Photos will be taken to document the conditions prior to leaving the site for use in the final

plan. All appropriate agencies will be contacted and notified once the final clean up has been conducted. The photos will make up part of the final closure reports to be submitted to DIAND, the Nunavut Water Board and the Qikiqtani Inuit Association.

7. Emergency Contact Information

CONTACT	TELEPHONE NUMBER
INAC Water Resource Officer, Iqaluit	(867) 975-4295
Environment Canada	(867) 975-4644, 24hr page (867) 766-3737
Nunavut Department of Environment	(867) 975-7700
Manager Pollution Control/Air Quality	(867) 975-7748
John Amagoalik, Director of Lands & Resources, Qikiqtani Inuit Association	(867) 975-8417
DFO	(867) 979-8007
Dean Besserer, APEX Geoscience, VP	(780) 439-5380
Ryan Grywal, Weststar Resources	(604) 669-9330
Air Tindi	(867) 669-8212
Yellowknife Fire Department	(867) 873-2222
Resolute Bay RCMP	(867) 252-0123
Grise Fiord RCMP	(867) 980-0123
Qikiqtani General Hospital – Iqaluit	(867) 975-8600
Discovery Mining Services	(867) 920-4600

Appendix I



Legend

Northern Communities

Property Location

WESTSTAR RESOURCES

ELLESMERE ISLAND NUNAVUT

GENERAL LOCATION

125

62.5

0

125

Kilometers

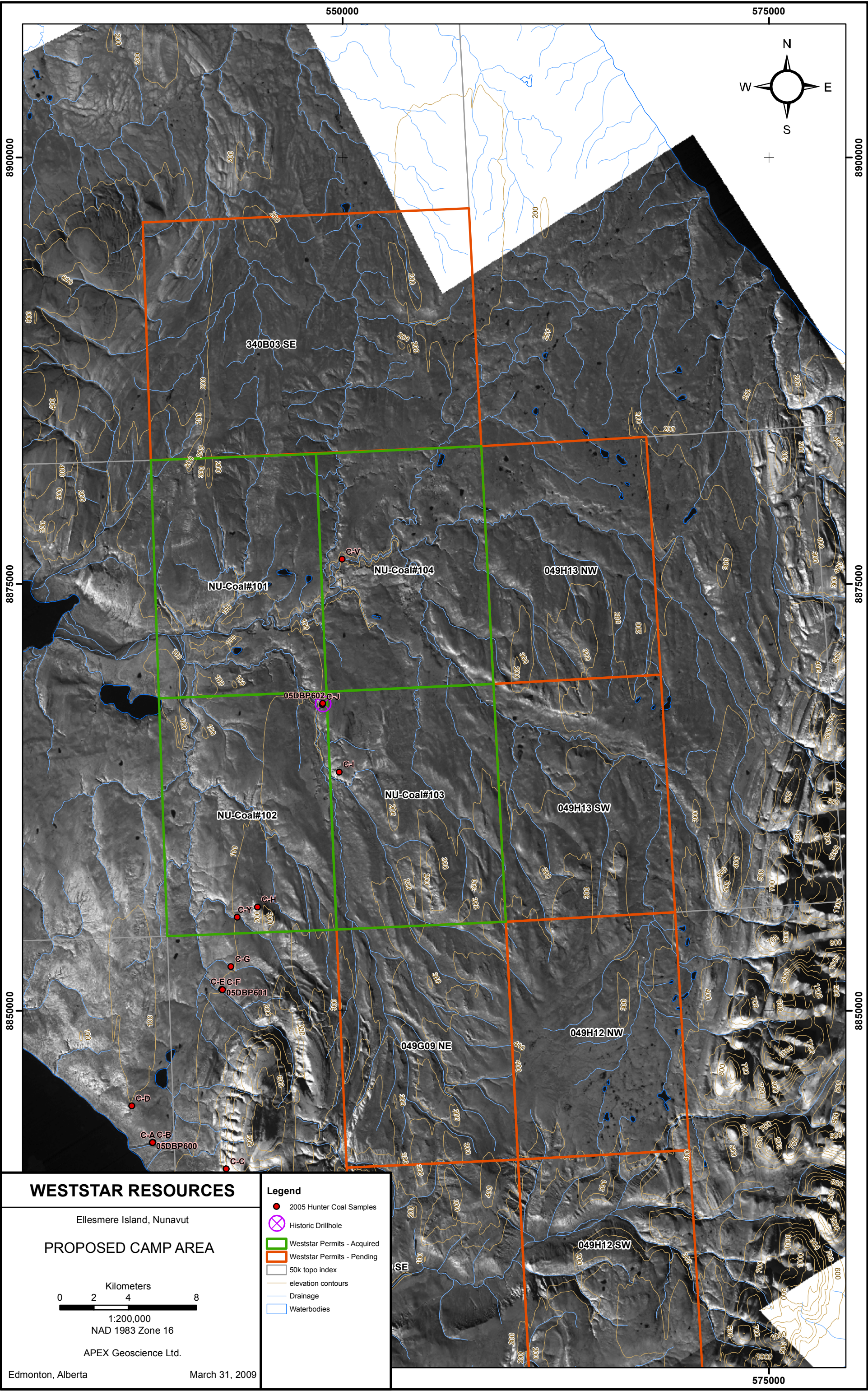
1:3,500,000

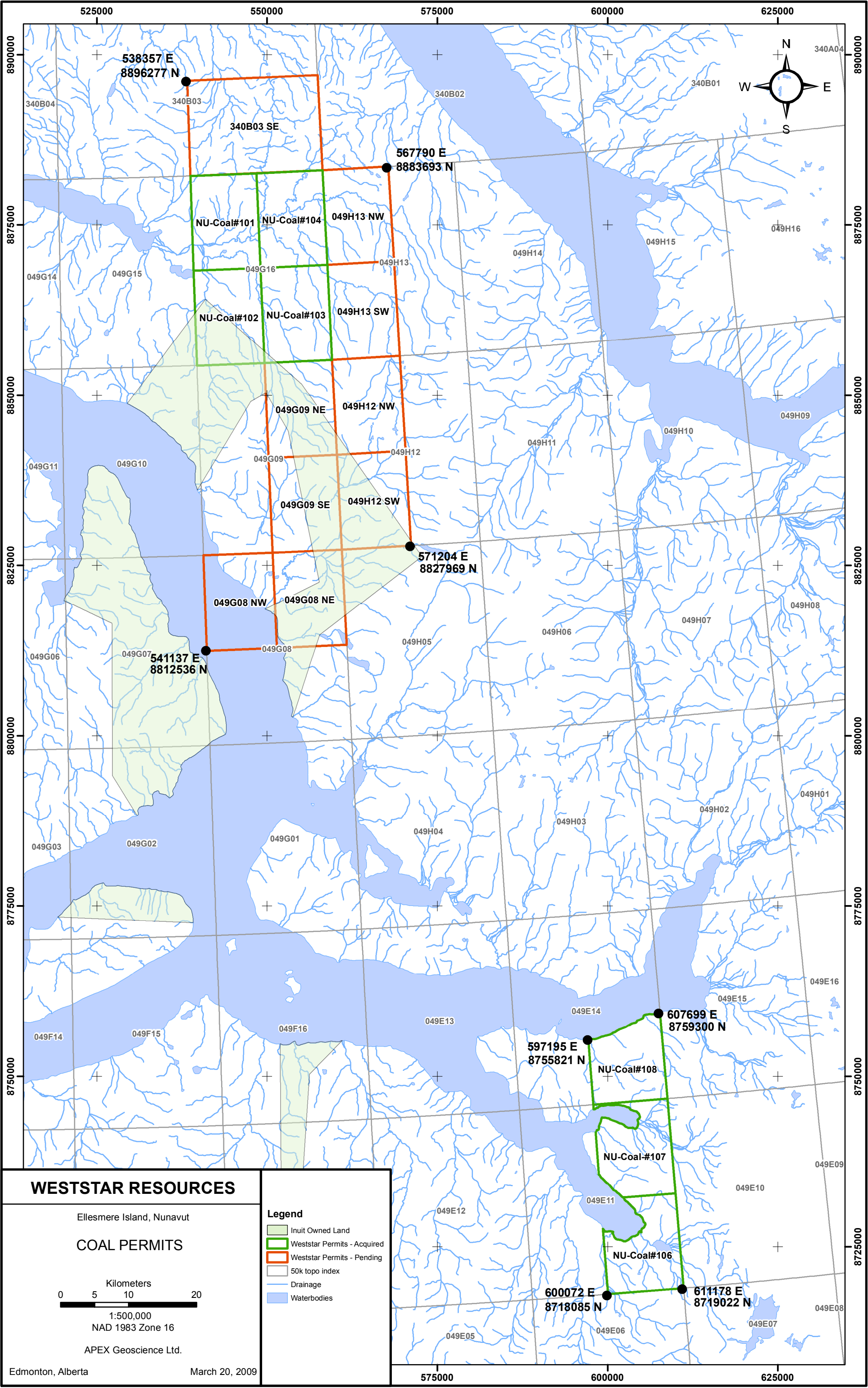
NAD 83 Zone 16

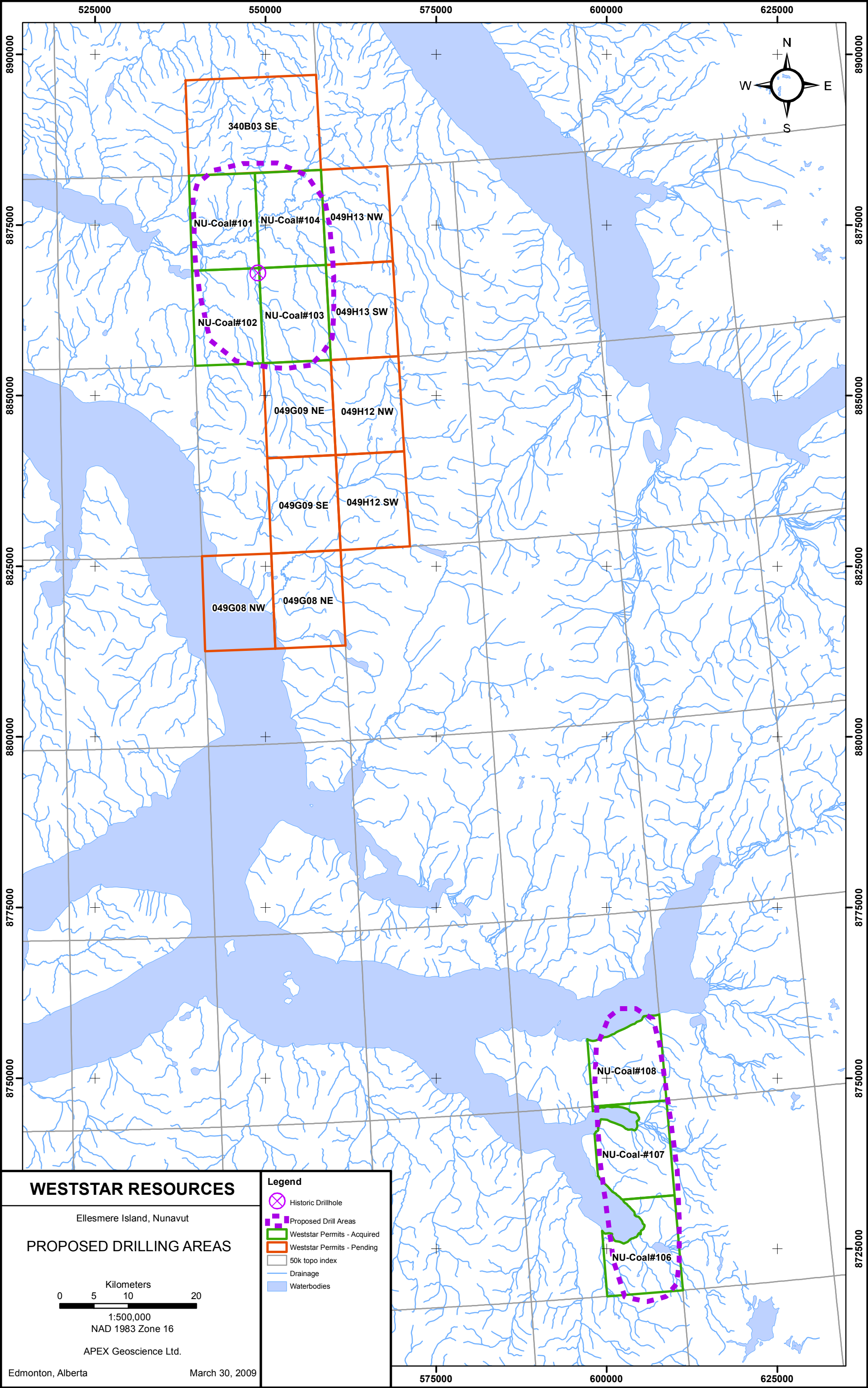
APEX Geoscience Ltd.

EDMONTON, ALBERTA

APRIL 2009



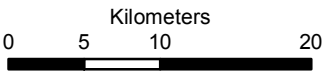




WESTSTAR RESOURCES

Ellesmere Island, Nunavut

PROPOSED DRILLING AREAS



1:500,000
NAD 1983 Zone 16

APEX Geoscience Ltd.

Edmonton, Alberta

March 30, 2009

Legend

- Historic Drillhole
- Proposed Drill Areas
- Weststar Permits - Acquired
- Weststar Permits - Pending
- 50k topo index
- Drainage
- Waterbodies