

Canoe Lake Cleanup of Historic Debris - Water Licence 2BE-CAN0608

On August 9th 2014 two areas of the Canoe Lake property were visited to cleanup historic debris as requested by Ms. Eva Paul (Water Resources Officer for AANDC) in a letter to Strongbow Exploration dated November 2013. All of the debris found at the site was historical in nature, and predated by many years the exploration of the area by Strongbow and the water licences under which Strongbow had operated in the area. Before and after photos of all the debris found and removed from the Canoe Lake fly camp area and the east end of Canoe Lake are presented in the following pages.

The 2006 Strongbow fly camp area on the southwest side of Canoe Lake and the east end of Canoe Lake (Table 1) were visited on August 09, 2014. Access to the areas was gained by a float plane (DHC-2 Beaver) chartered from Yellowknife. All co-ordinates are reported in Latitude and Longitude as well as Easting and Northing (datum: NAD83 UTM zone 12). Figure 1 shows the Canoe Lake fly camp area and east end of Canoe Lake area where debris was reported. Table 1 also provides four waypoints measured by a handheld GPS that mark some of the specific sites where debris was found and removed. These waypoints are also shown on Figure 1.

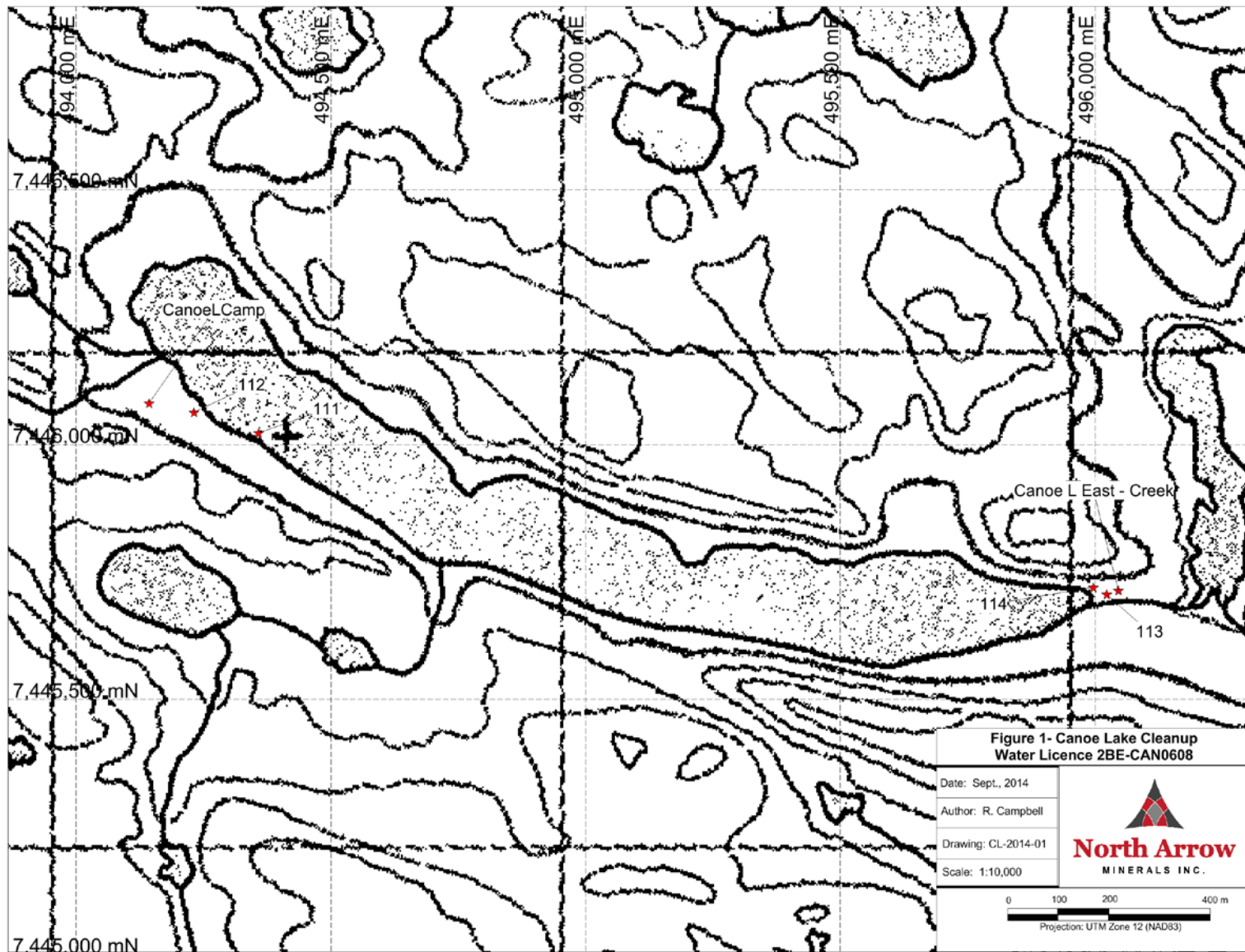
At the Canoe Lake fly camp area there were no signs of any debris or garbage left behind by Strongbow or affiliated companies, however very old historic debris that had no association with any of the work undertaken by Strongbow, was found. This included pieces of plywood, 2"x4" pieces, rusty wire, rusty nails, broken glass and rusty cans. All of this debris was cleaned up and removed from the site. In addition a pile of historic drill core was restacked in an orderly fashion (see photos below).

At the east end of the lake where an intermittent creek drains into Canoe Lake, pieces of wood associated with a very old historic floating dock were found and removed from the site (see photos below).

The July 5, 2013 inspection report noted burn barrels at one of the sites, however these drums could not be found in the area and are presumed to have been removed.

Table 1: Canoe Lake Cleanup Sites-August 9th, 2014

Area	Waypoint	EAST_NAD83 UTMz12	NORTH_NAD83 UTMz12	LATITUDE	LONGITUDE
Canoe Lake Camp	General location	494142	7446083	67° 07' 54.6"	111° 08' 06.3"
Canoe Lake East End	General location	496045	7445715	67° 07' 42.8"	111° 05' 28.3"
Canoe Lake Camp	111	494357	7446024	67° 07' 52.7"	111° 07' 48.4"
Canoe Lake Camp	112	494230	7446064	67° 07' 54.0"	111° 07' 59.0"
Canoe Lake Camp	113	496022	7445708	67° 07' 42.6"	111° 05' 30.2"
Canoe Lake Camp	114	495996	7445720	67° 07' 43.0"	111° 05' 32.3"



Canoe Lake Fly Camp Area Photos



Photo 1: Before photo of historic plywood and debris. Looking west.



Photo 2: After cleanup photo of historic plywood and debris (Photo1). Looking west.



Photo 3: Before photo of historic garbage including broken glass.



Photo 4: After cleanup photo of historic garbage including broken glass (Photo 3). White bag at top of photo is garbage bag used to collect debris and was removed from site.



Photo 5: Before photo of historic wood debris. Looking north. Rusty nails were also found in this area (See photos 7 to 9). GPS waypoint 112 (Table 1).



Photo 6: "After" photo of historic wood debris (Photo 5). Looking north. GPS waypoint 112 (Table 1).



Photo 7: Before photo historic rusty nails found in area of Photo 5.



Photo 8: Pile of rusty nails collected in area of Photo 5.



Photo 9: After cleanup photo of historic rusty nails found in area of Photo 5.



Photo 10: Before photo of historic wood debris along southwest shore of Canoe Lake. Looking north. GPS waypoint 111 (Table 1).



Photo 11: After cleanup photo where historic wood debris was found along southwest shore of Canoe Lake. Looking north.



Photo 12: Before photo of historic garbage. Looking southwest.



Photo 13: After cleanup photo of historic garbage. Looking southwest.



Photo 14: Before photo of historic wood debris. Looking south.



Photo 15: After cleanup photo of historic wood debris. Looking south.

Water Licence 2BE-CAN0608 Cleanup-August09-2014



Photo 16: Before photo of historic drill core piles in disarray. Looking south.



Photo 17: After cleanup photo of historic drill core piles (with rocks). Looking south.



Photo 18: After cleanup photo of historic drill core piles (Photo 16). Looking north.



Photo 19: After cleanup. Float plane access point to Canoe Lake fly camp area. Looking north.



Photo 20: After cleanup. Looking east along shore from spot Photo 19 was taken.



Photo 21: After cleanup. Looking north from spot Photo 19 was taken. Looking south.

East End of Canoe Lake Area Photos



Photo 22: Before photo of historic debris from wooden dock at east end of Canoe Lake. Looking south. GPS waypoint 113 (Table 1).



Photo 23: After cleanup of historic debris from wooden dock at east end of Canoe Lake. Looking south. GPS waypoint 113 (Table 1).



Photo 24: Before photo of historic debris from wooden dock at east end of Canoe Lake. Looking south. GPS waypoint 114 (Table 1).



Photo 25: In progress cleanup of historic debris from wooden dock at east end of Canoe Lake. Looking south. GPS waypoint 114 (Table 1).



Photo 26: After cleanup of historic debris from wooden dock at east end of Canoe L. Looking south. GPS waypoint 114 (Table 1).



Photo 27: Float plane departing from east end of Canoe L after cleaning up historic wooden dock debris. Looking west.