

Non-Technical Summary for the Committee Bay Property

The Committee Bay Property is located within the Kitikmeot and Kivalliq Regions of Nunavut, within the 1:250,000 scale NTS map sheets, 56J and 56K. The Property is approximately 300 km west of the community of Nauyasat (Repulse Bay), 300 km northeast of the community of Baker Lake and 400 km northwest of the community of Rankin Inlet. The Property consists of three project areas: Area A to the north, Area B in the centre and Area C to the south (Figure 1).

The proposed exploration program will be supported by a temporary, 6 to 10 person exploration camp. The program is anticipated to commence June 15th, 2017 and run for 6 weeks (42 days). INAC, NWB and NIRB will be notified 30 days prior to the establishment of the camp and fuel cache. Personnel and cargo will be transported to the Property via a chartered plane from Baker Lake or Rankin Inlet. Structures for the proposed camp may include 4 sleeper tents, 1 kitchen, 1 dry, 1 generator shack, and 1 outhouse. The majority of the structures will be insulated Weatherhaven tents, or similar, with tarp floors.

A fuel cache of less than 4,000 L (approximately 19 drums) will be established on stable ground near the camp, primarily to store diesel and jet fuel. Small quantities of gasoline and propane will also be stored. Small temporary fuel caches (less than 4,000 L), may also be required to supply the drilling and exploration programs. Within 30 days of the establishment of any temporary fuel cache, the appropriate agencies will be notified of the details of the cache including: GPS location, fuel type, container sizes, method of storage and proposed date of removal. The temporary fuel cache GPS locations will also be included in the annual reports submitted to the INAC, NWB and NIRB.

The proposed 2017 exploration activities for the Committee Bay Property include prospecting, till sampling and ground geophysical surveys. The intent of the 2017 exploration program is to delineate targets for diamond drilling. As soon as targets are identified for drilling INAC, NWB and NIRB will be notified and supplied with locations and maps. All exploration work and drilling will be strictly confined to the Areas A, B and C (Figure 1).

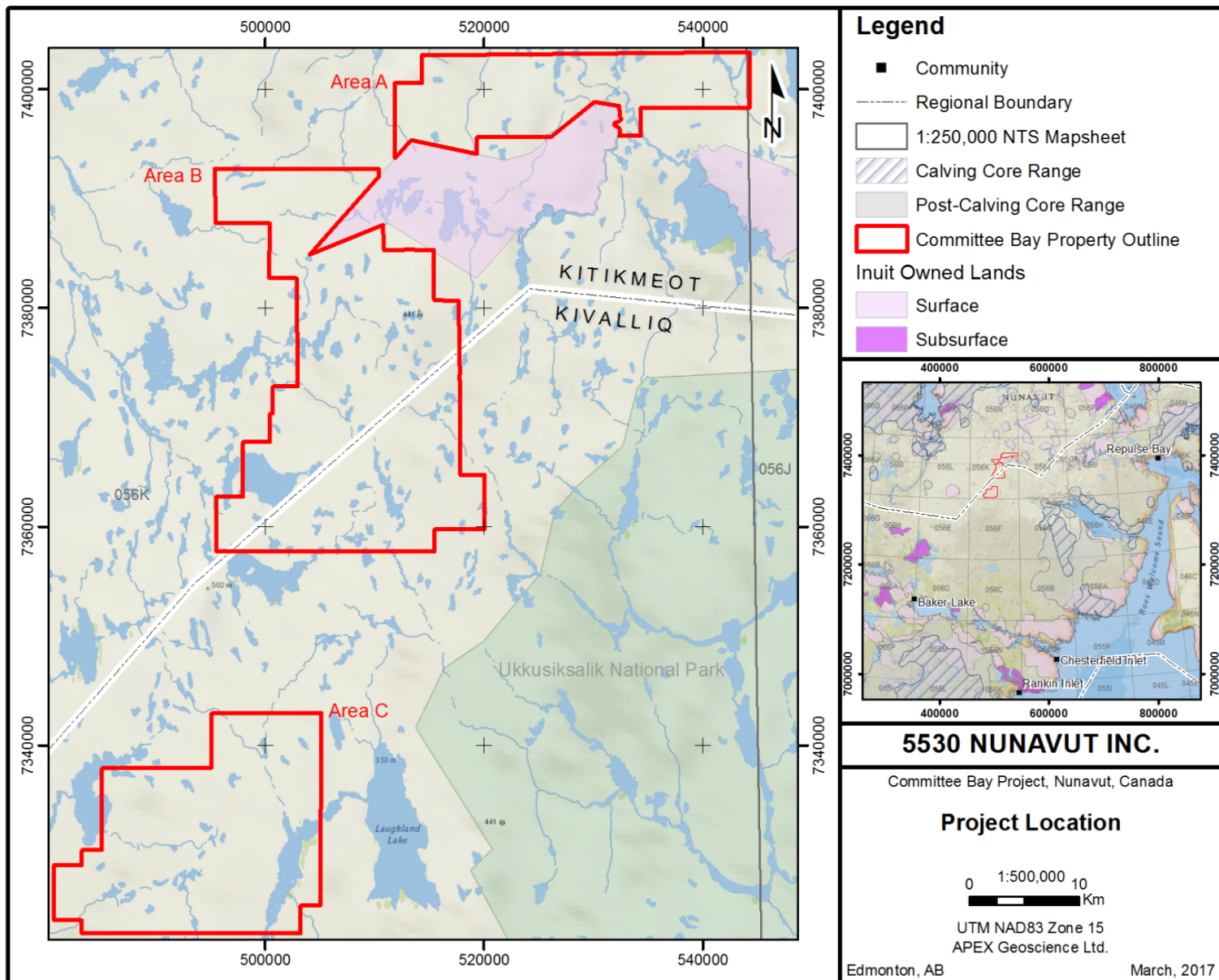


Figure 1.