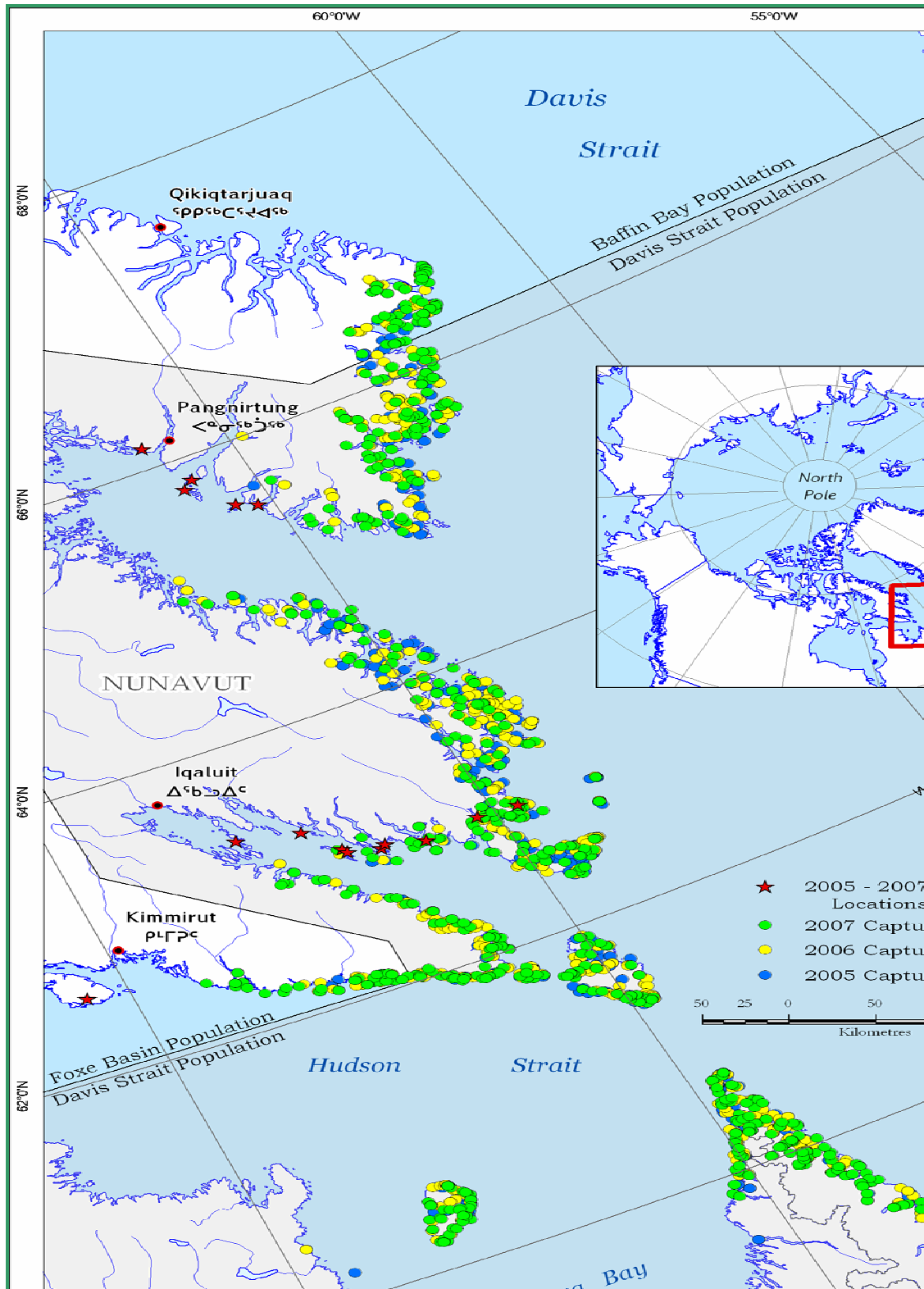


MAP 4



Map of unpublished data, 2005-2007 polar bear captures for studies of the Davis Strait Population, South Baffin (courtesy of E. Peacock, GN Biologist). Denning and summering habitat exists at the northernmost edges of the Chidliak property. Peregrine is aware of this and will practise avoidance when bears are reported in an area planned for survey, coupled with use of Inuit Bear Monitors for ground-based activity.