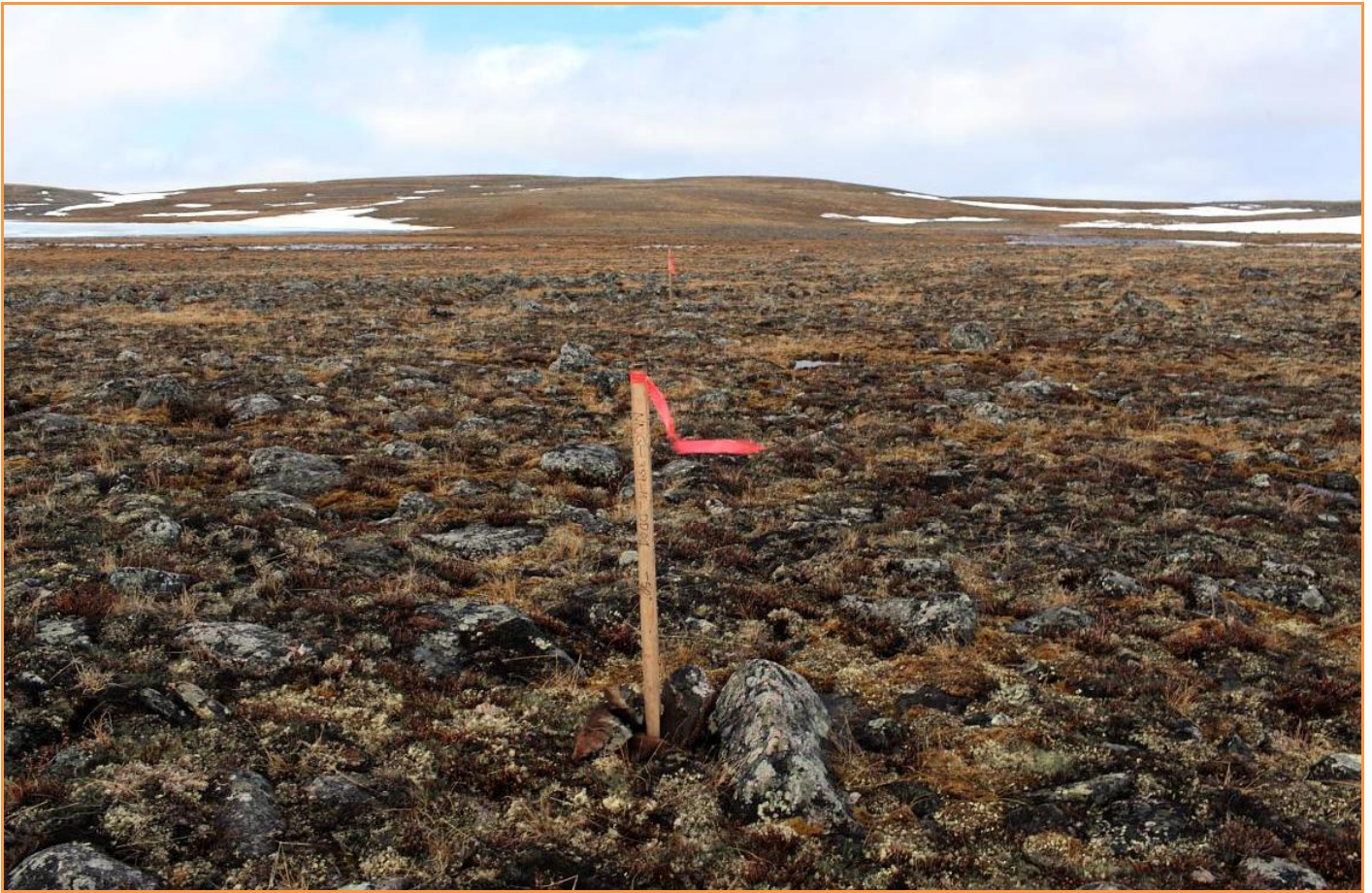


**PEREGRINE DIAMONDS LTD.  
NANUQ PHOTOS AND MAPS – 2011**



**TOP: Looking south to Nanuq Camp during an AANDC inspection – 22 July 2011.  
ABOVE: Wildlife monitor Alistair Sammurtok on the job at drillsite – August 2011.**



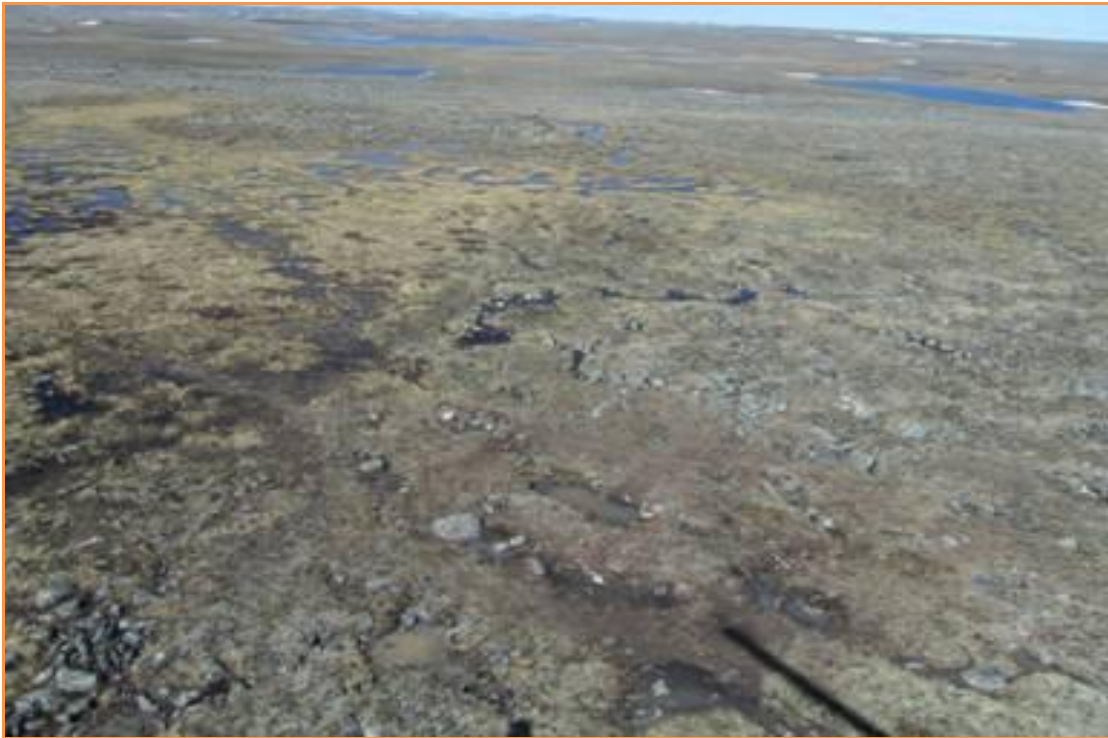


**TOP: NNQ\_359 drill location (approx. 14km NNE of Nanuq Camp) prior to drilling – 25 June 2011.    ABOVE: Camp attendant Chris Richardson sets up for Spill Drill exercise on 10 August 2011.**



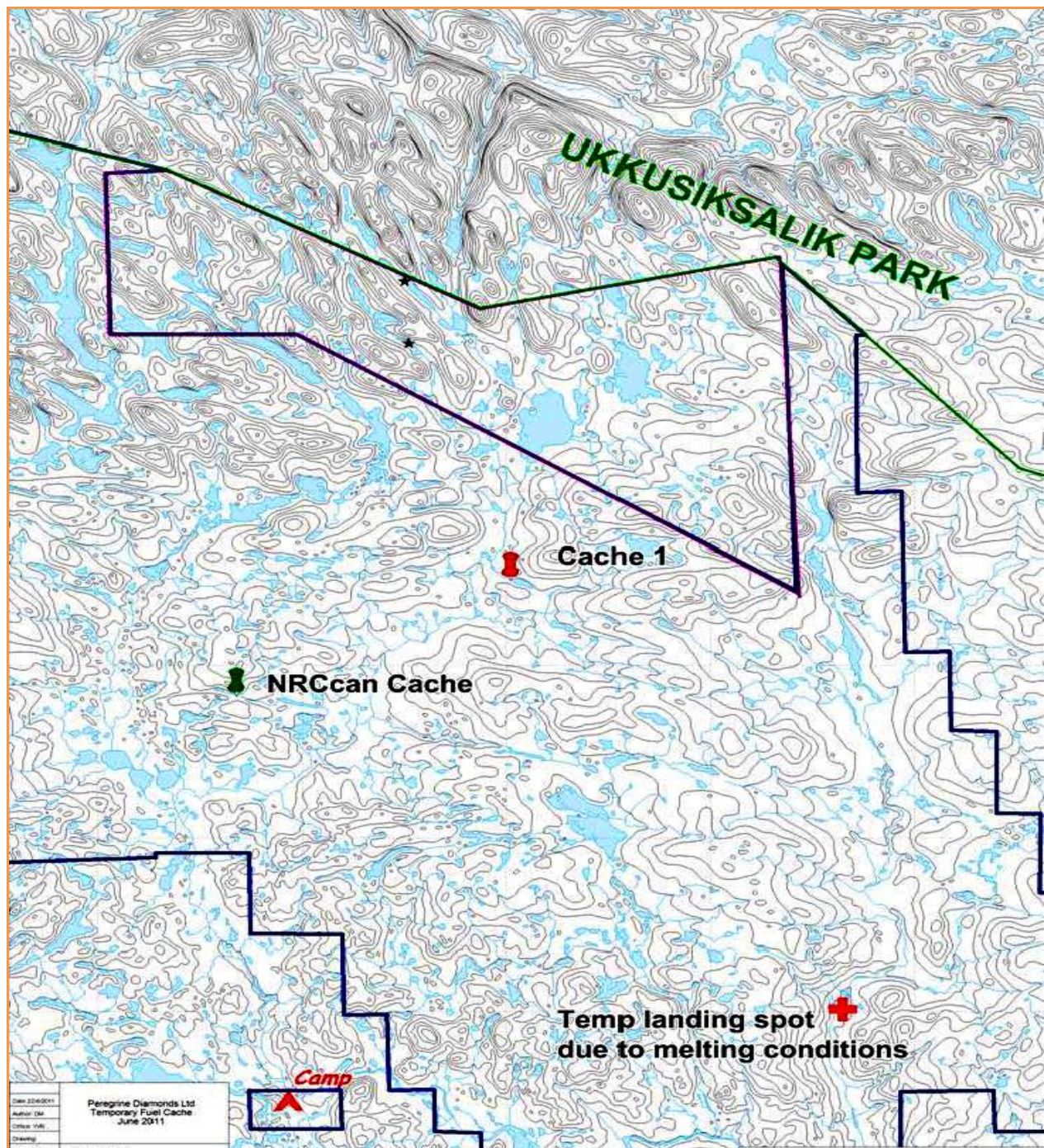


**TOP: Dead wolf beside torn tent at Nanuq Camp – 09 July 2011. CENTRE: Community meeting in Chesterfield Inlet – 30 May 2011. ABOVE: View of audience during Repulse Bay community meeting – 01 June 2011.**



**TOP:** View of Nanuq fuel cache location post-closure – August 2011. The cache was comprised of 15 drums of Jet-A and a spill kit, and was located 30m from the river shoreline (L bank in photo, where river narrows).  
**ABOVE:** Aerial view of NNQ\_382 drill location after post-hole-closure on 26 June 2011, illustrating no visible signs of drilling.





**ABOVE:** Location of Nanuq fuel cache used between 22 and 30 June 2011, and removed on the latter date. Due to wet-snow conditions at the Nanuq Camp airstrip, a temporary Twin landing area, 24km ENE of camp, was used for about a week until 21 June 2011, then everything was removed to the camp strip.



