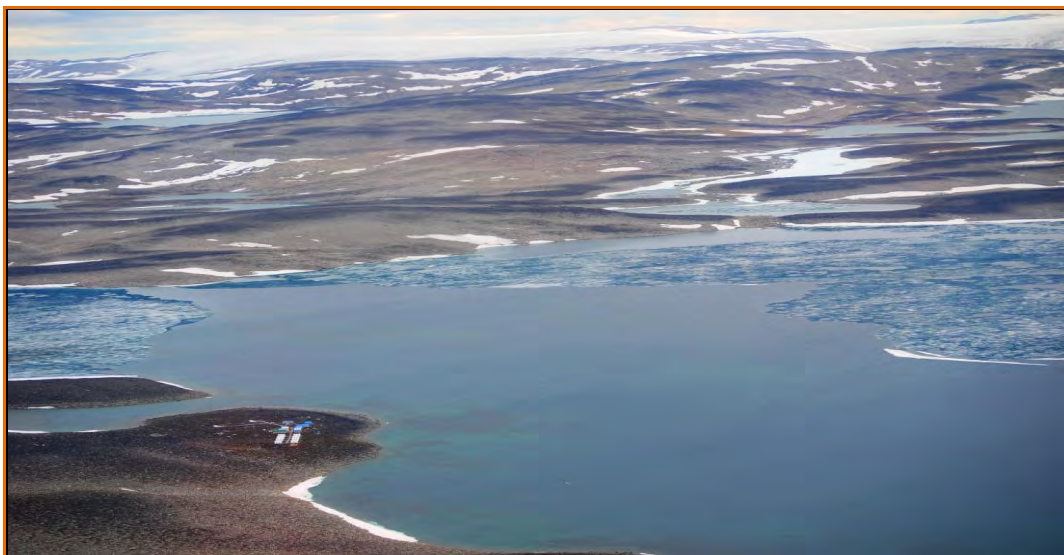


**PEREGRINE DIAMONDS LTD.
CHIDLIAK PROJECT PHOTOS, MAPS, TABLE – 2012**

PHOTOS



TOP: Chidliak's Sunrise Camp during spring programme, 20 April 2012. CENTRE: Aerial of Sunrise Camp before closure, 10 May 2012. ABOVE: Aerial of Sunrise Camp and lake, 14 July 2012.



ABOVE: Aerial of Discovery Camp with water-supply glacial rill, 14 July 2012.



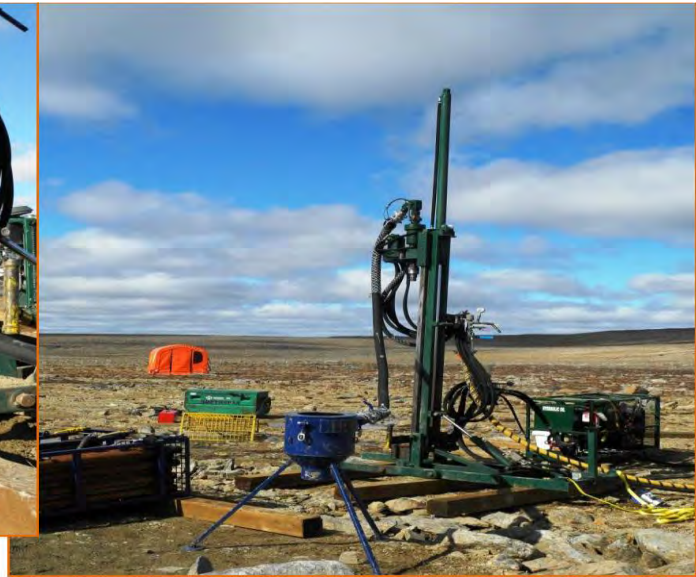
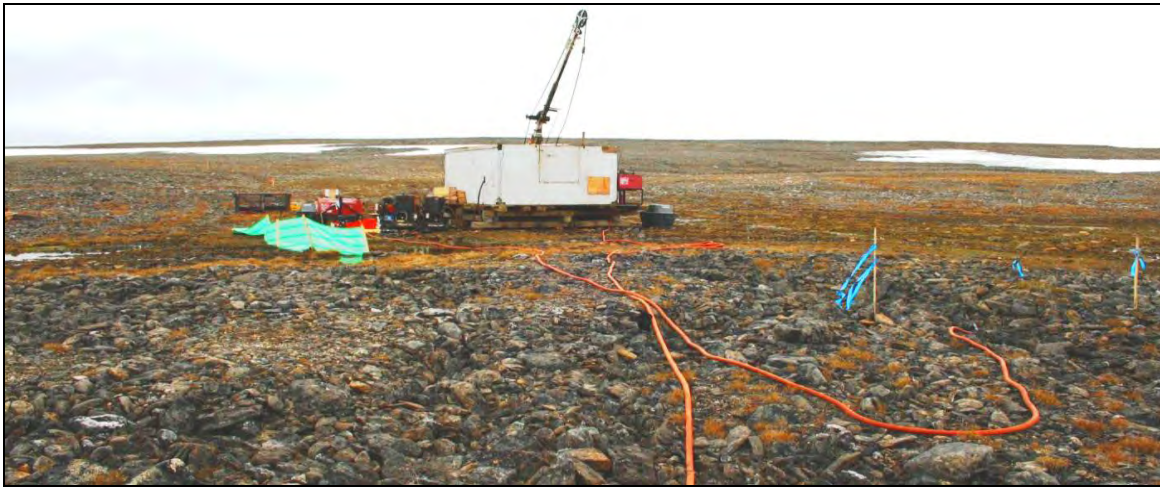
TOP and ABOVE: Discovery Camp greywater sump with rock channel; Pangnirtung worker Amie Nashalik training on CAT Skidsteer, 13 July 2012.
LEFT-ABOVE: Petrol station at Sunrise Camp, 21 April 2012.
LEFT: A400 (sec) Inciner8 during daily incinerator burn at Discovery Camp, 13 July 2012. Peregrine has had a Waste Management Strategy in place at Chidliak camps since 2009.



TOP: Discovery Camp with new Kitchen on Nunavut Day, 09 July 2012. (Kitchen and Dry changed places within the camp layout, but camp footprint did not change). LEFT-CENTRE: WSCC Inspector Martin Van Rooy (far R) during safety visit, 08 August 2012. RIGHT-CENTRE: Heli-safety briefing for summer programme at Discovery Camp, 30 June 2012. ABOVE: Annual spill drill exercise at Discovery Camp, led by Operations Manager Ron Corey (centre), 17 July 2012.



TOP: Sno-Cat on Pang Trail with supply komatik during trial mobe-in of heavy equipment, 20 April 2012.
CENTRE: End of successful scouting trip for equipment mobe-in. From L: Dave Clarke, Nuna Logistics, and Amarok HTA scouting experts Jetaloo Kakee and Etulu Aningmiak upon arrival at Sunrise Camp, 08 April 2012. **ABOVE:** Equipment parked beside Discovery Camp equipment shed, 08 April 2012.



TOP: First drillhole of the 2012 season: #CHI-251-12-DD15 core-drill setup at CH-7, 03 July 2012. **CENTRE:** Hornet drill on first RC hole of the season: #CHI-050-12-RC01 setup at CH-6, 07 August 2012. **ABOVE:** Camp medic checks on drill crew at core hole #CHI-095-12-DD05 at CH-1, 27 July 2012.



SPILL INCIDENTS 2012: CLEANUP PHOTOS



TOP: Spill Incident #12-102 occurred 31 March 2012 when 5L of red-dyed diesel fuel leaked onto Sunrise Camp lake ice; contaminated snow and ice were easily retrieved. Cleaned location is shown, with boot in photo for scale. **ABOVE:** Spill Incident #12-315 occurred 01 August 2012 when 25L of fuel leaked from faulty aircraft fuel-drain valve onto apron of landing strip, Discovery Camp. Six drums and one overpack of rocks and soil were outshipped; excavated area as shown here was levelled with clean material from surrounding area.



TOP: CH-6 Camp after demobe, 29 August 2012; blue object parked at SE is a Nuna sled trailer. ABOVE: CH-6 Camp whilst demobe was in progress, 17 August 2012. With the announcement of the postponement of the bulk-sample programme, Peregrine down-scaled CH-6, Discovery and Sunrise Camps, removing some tents and other items to guard against wear-and-tear whilst the camps were not in use and to reduce project footprint. Aurora Camp already had been down-scaled after the 2011 programme, with final removal of fuel and cleanup occurring in spring and summer 2012. (Camp layouts are depicted below).

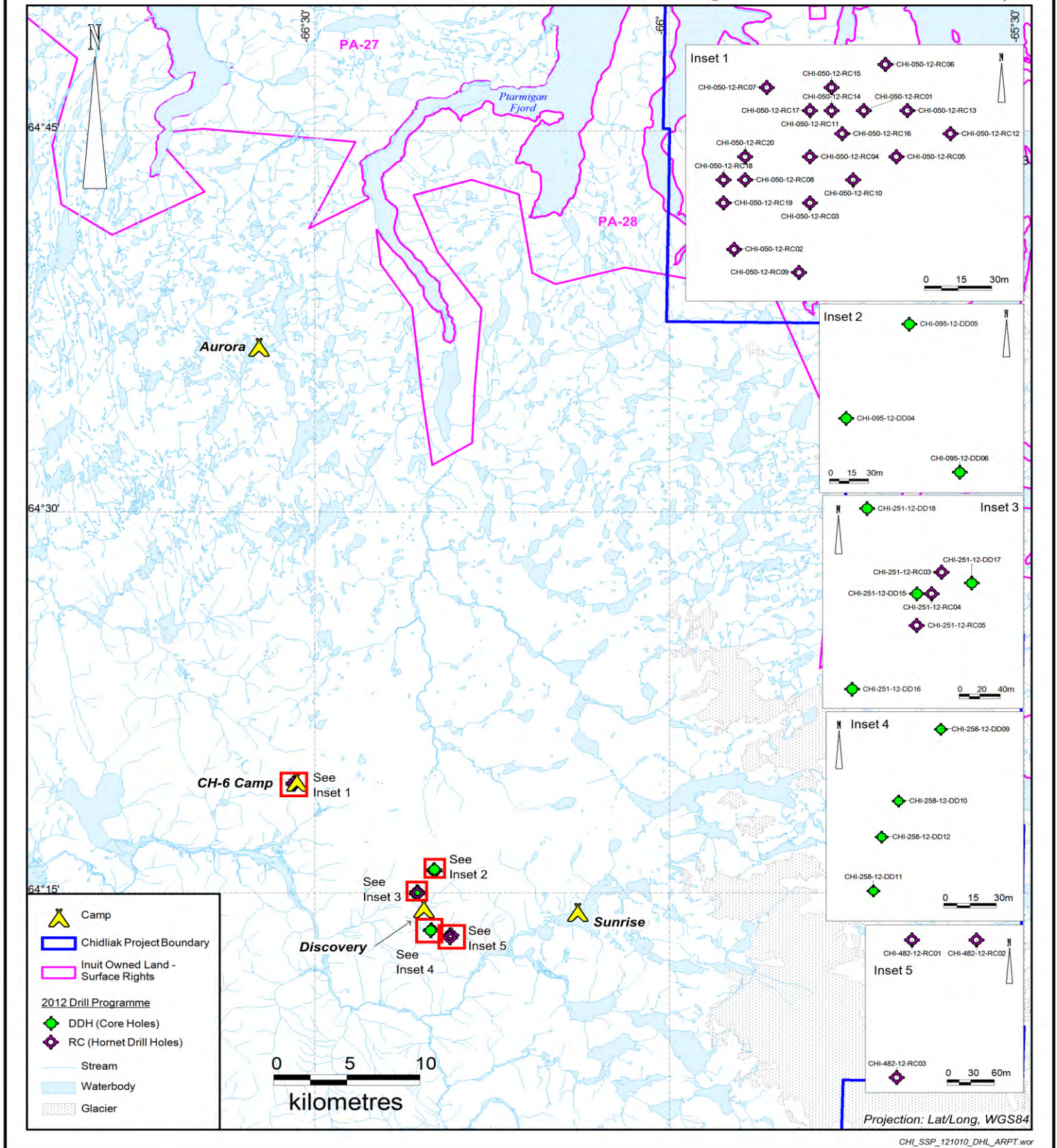


TOP: Peregrine community meeting in Pangnirtung, 24 April 2012. **CENTRE:** Peregrine President Brooke Clements (second from L) led discussion with Pangnirtung hamlet representatives, 23 April 2012. **ABOVE:** Chidliak Project Manager Al O'Connor (foreground R) during second day of Pangnirtung Open House, 25 April 2012. Groups in Iqaluit, including City representatives and the Amarak Hunters & Trappers (HTA), were not available to meet during the late-April consultation tour, but were kept informed of activities.

MAPS

Peregrine Diamonds Ltd. - Chidliak Project 2012 Drill-Collar Locations - Core and RC Hornet Drill Programme

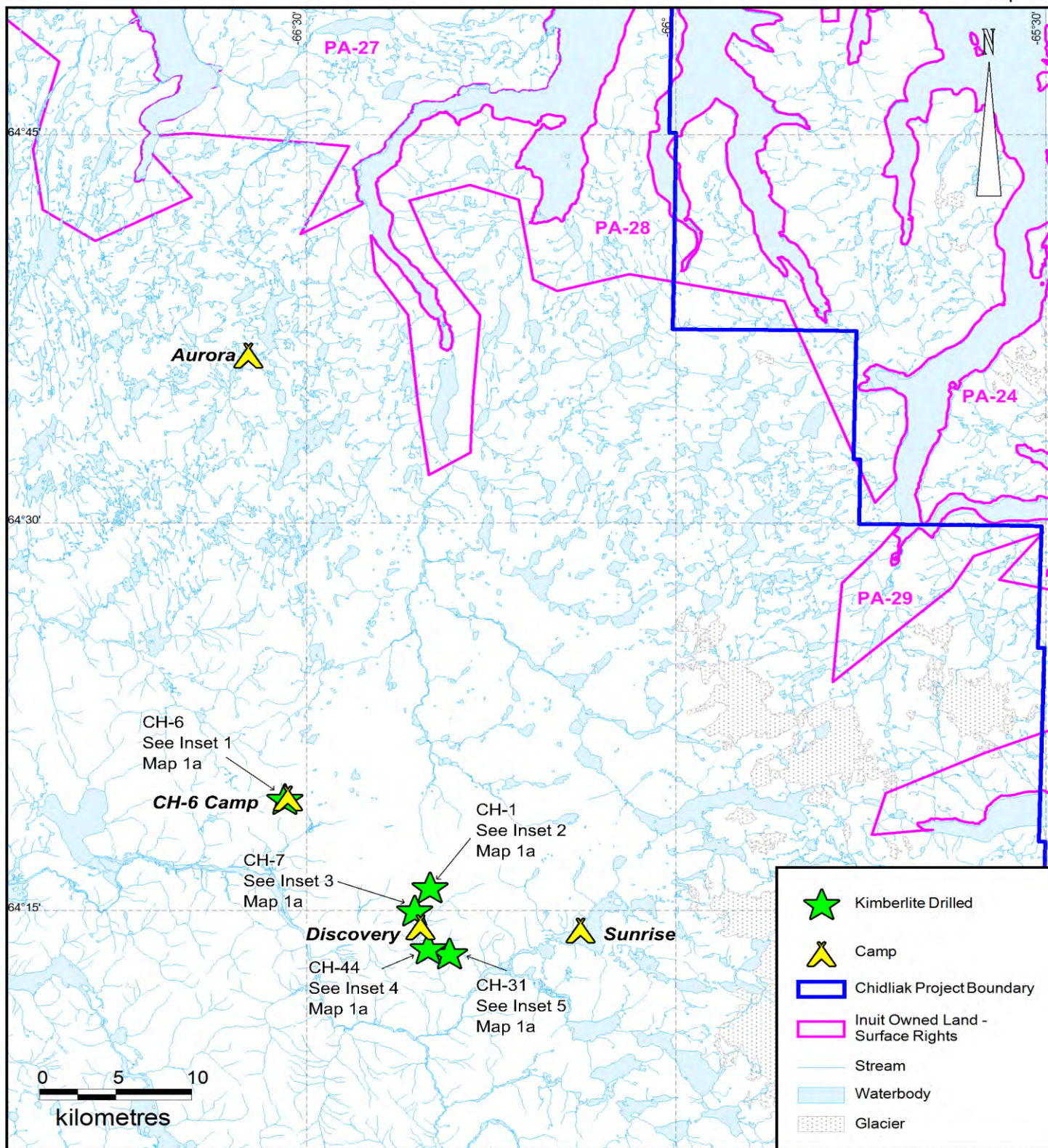
Map 1a



A total of 26 Hornet RC holes were drilled into kimberlites CH-6- CH-7 and CH-31 in 2012, with 11 core holes drilled into kimberlites CH-7, CH-1 and CH-44, for a grand total of 2 536.40m of land-based drilling.

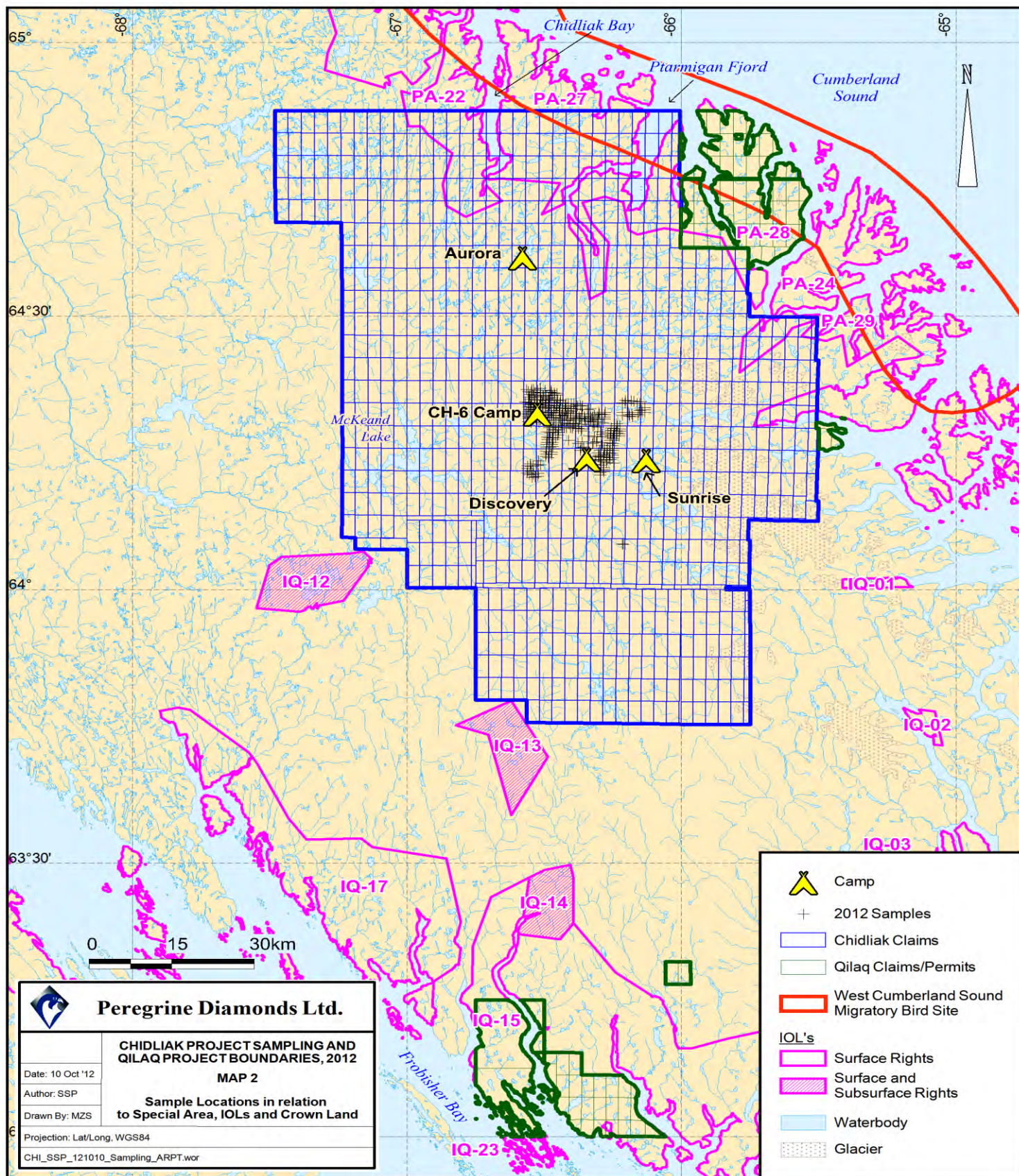
Peregrine Diamonds Ltd. - Chidliak Project
2012 Drilling Locations by Kimberlite

Map 1b

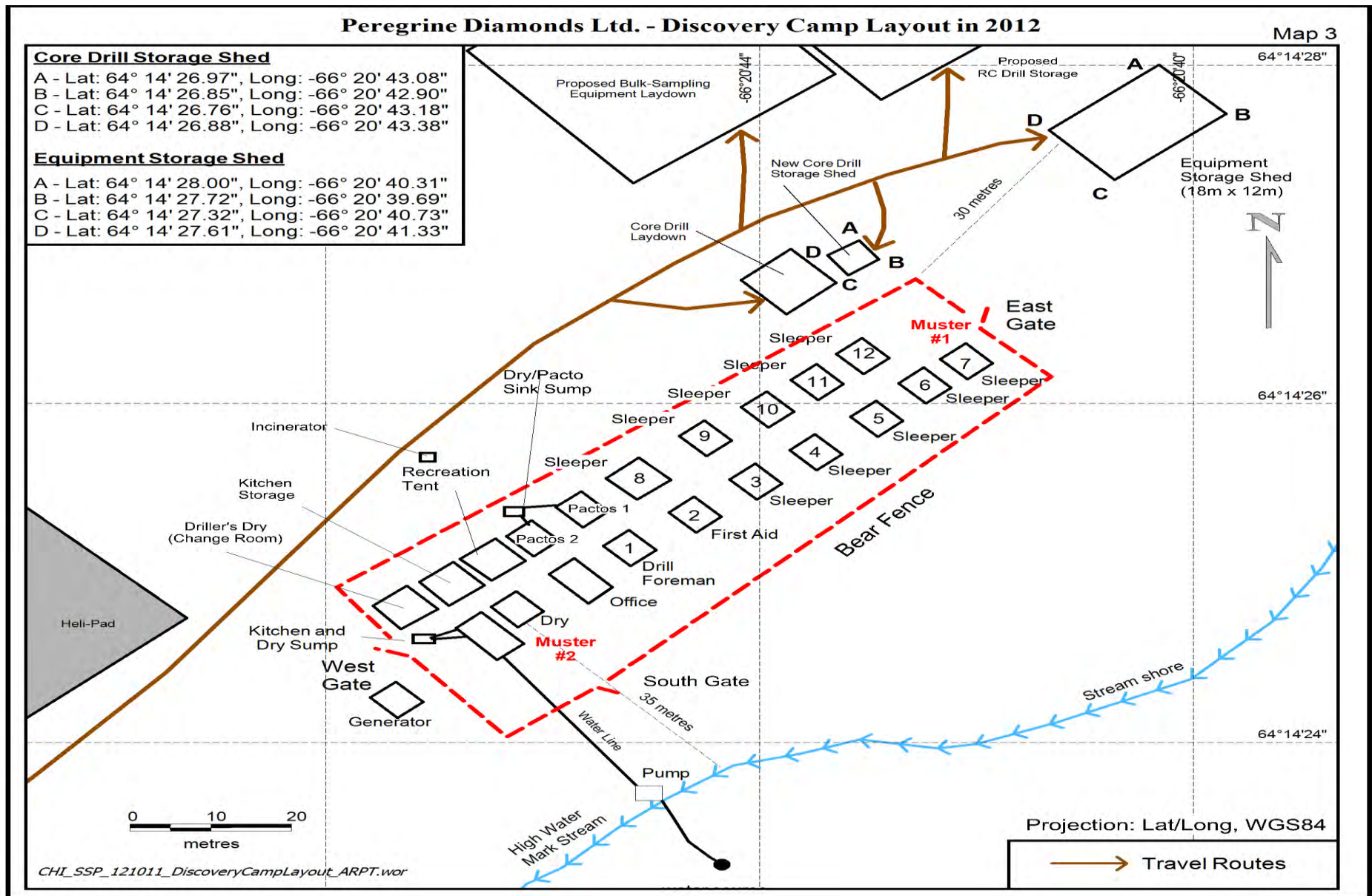


CHI_SSP_121010_DHL_ARPT.wor

Chidliak drilling in 2012 occurred only within the boundaries of kimberlites CH-6, CH-7, CH-1, CH-31 and CH-44 within the Focus Area in the south-centre of the Chidliak claimblock.



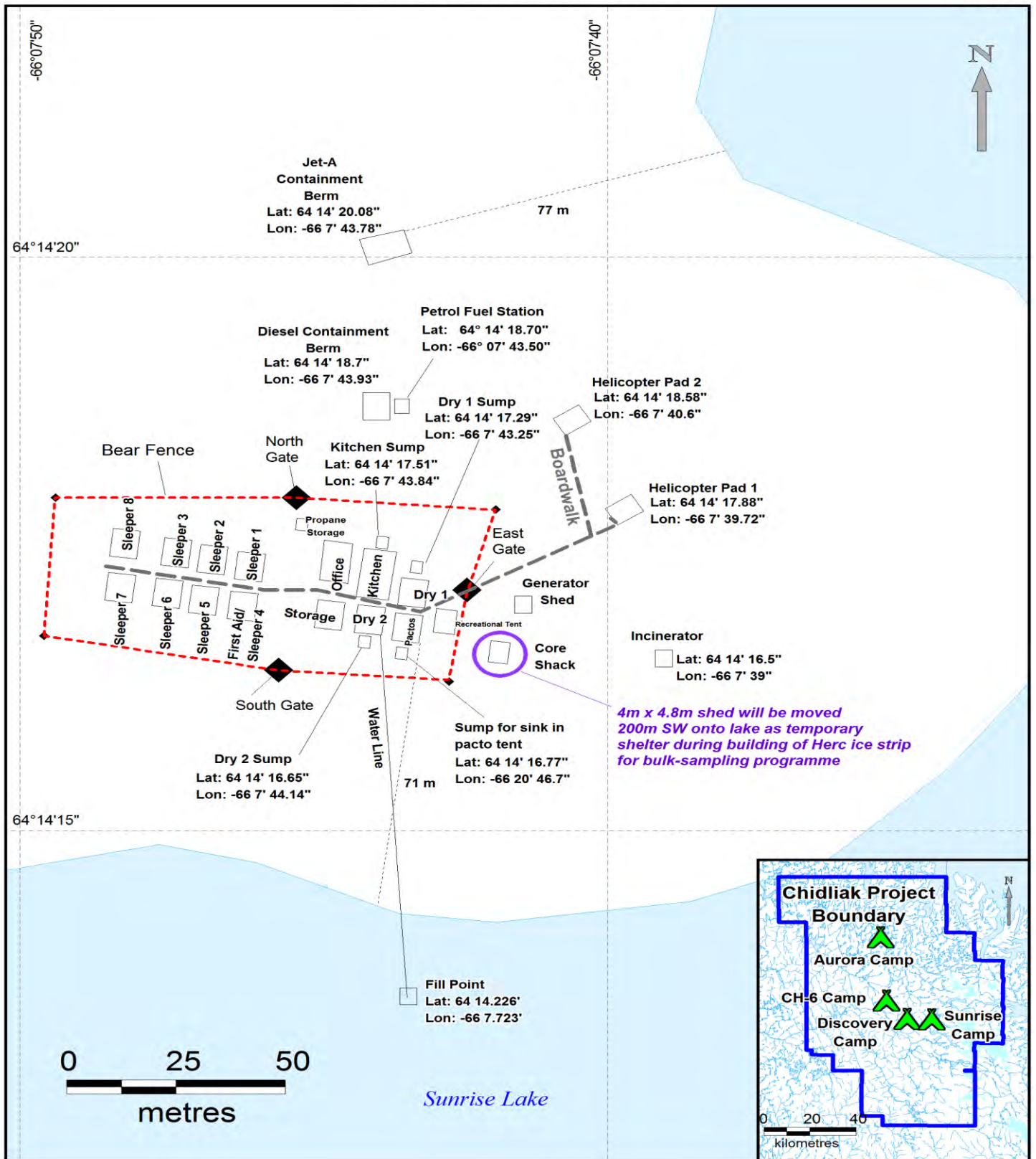
A total of 412 till samples were collected on Crown Land in the Chidliak Project. No samples were collected on the Qilaq Project, and no samples were collected on IOL's under QIA Land Licence #Q10L1C008-Extension. No samples were collected within the boundaries of the Canadian Wildlife Service Migratory Bird Site #29.



Discovery Camp as it appeared during 2012, prior to downscaling. At the end of season, 8 sleep tents, the Boart Longyear core drill and the Northspan RC Hornet drill were removed from site. Tents can be re-established later on the plywood bases left behind.

Peregrine Diamonds Ltd.
Sunrise Camp Layout in 2012

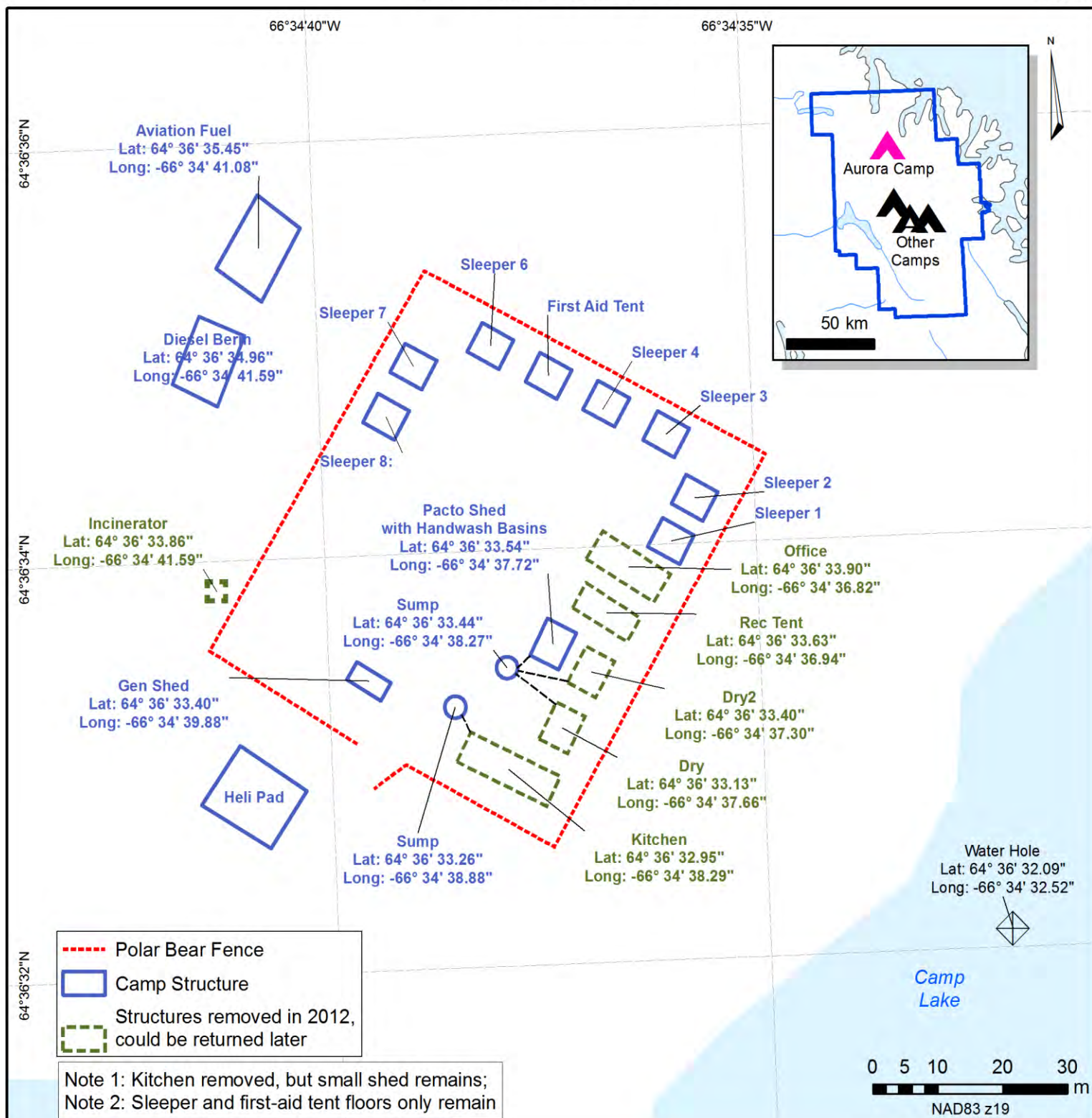
Map 4



Sunrise Camp as it appeared in 2012, prior to downscaling. At the end of season, 8 sleep tents, the 2 dry tents and the contents of the kitchen and dries were removed from site. Tents can be re-established later on the plywood bases left behind.

Peregrine Diamonds Ltd.
Aurora Camp Layout in 2012

Map 5



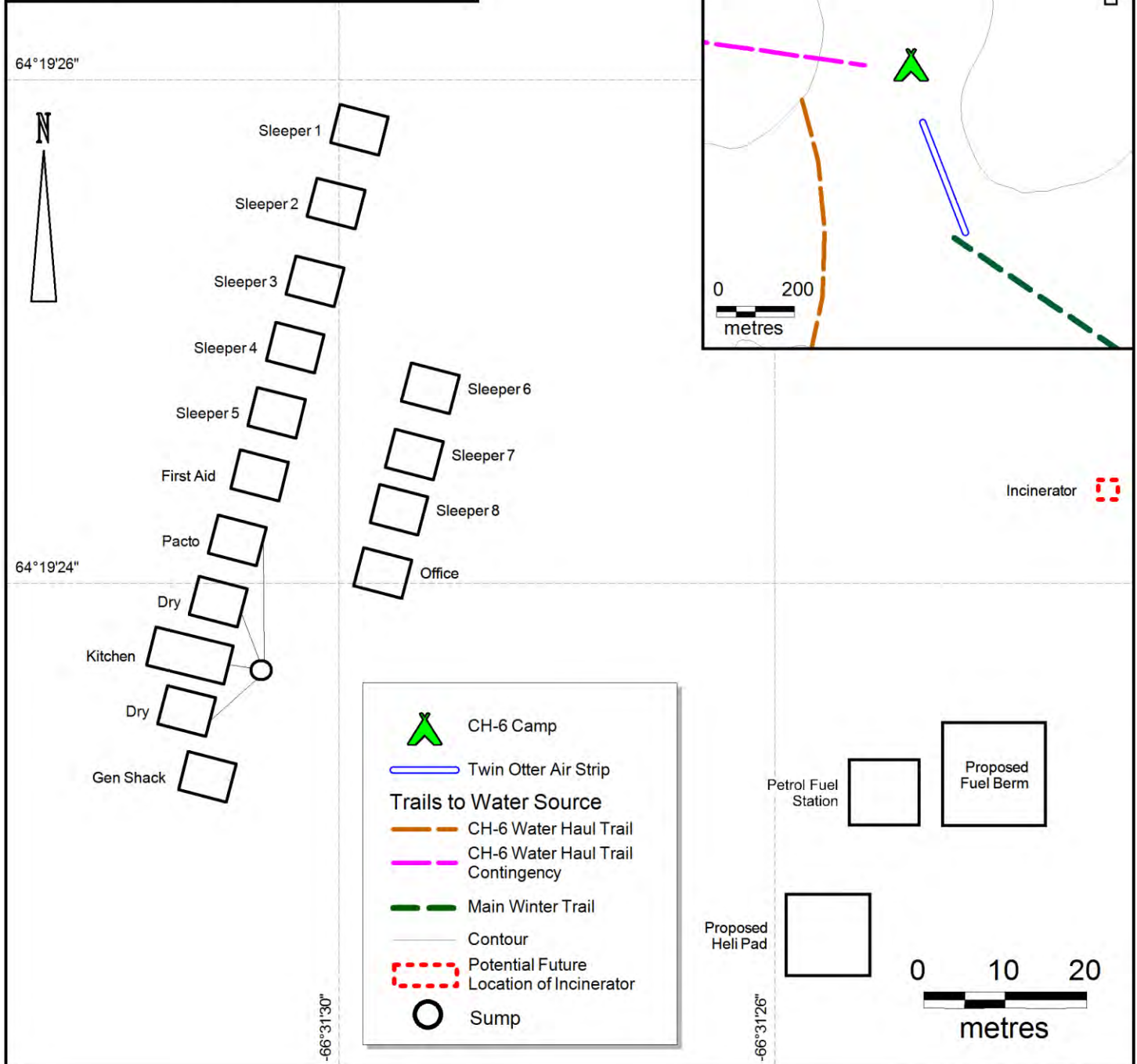
CHI_SSP_121012_AuroraCamp_ARPT.mxd

Aurora Camp already was downscaled in 2011; camp remained closed in 2012, with only minor cleanup and fuel removal required in 2012. Tents can be re-established later on the plywood bases left behind.

Peregrine Diamonds Inc.
CH-6 Camp Proposed Layout

MAP 6

The Only Structures in Place in 2012 were:
Pacto Shed Frame, Gen Shed Frame and the
8 Sets of Floors N of Gen Shack



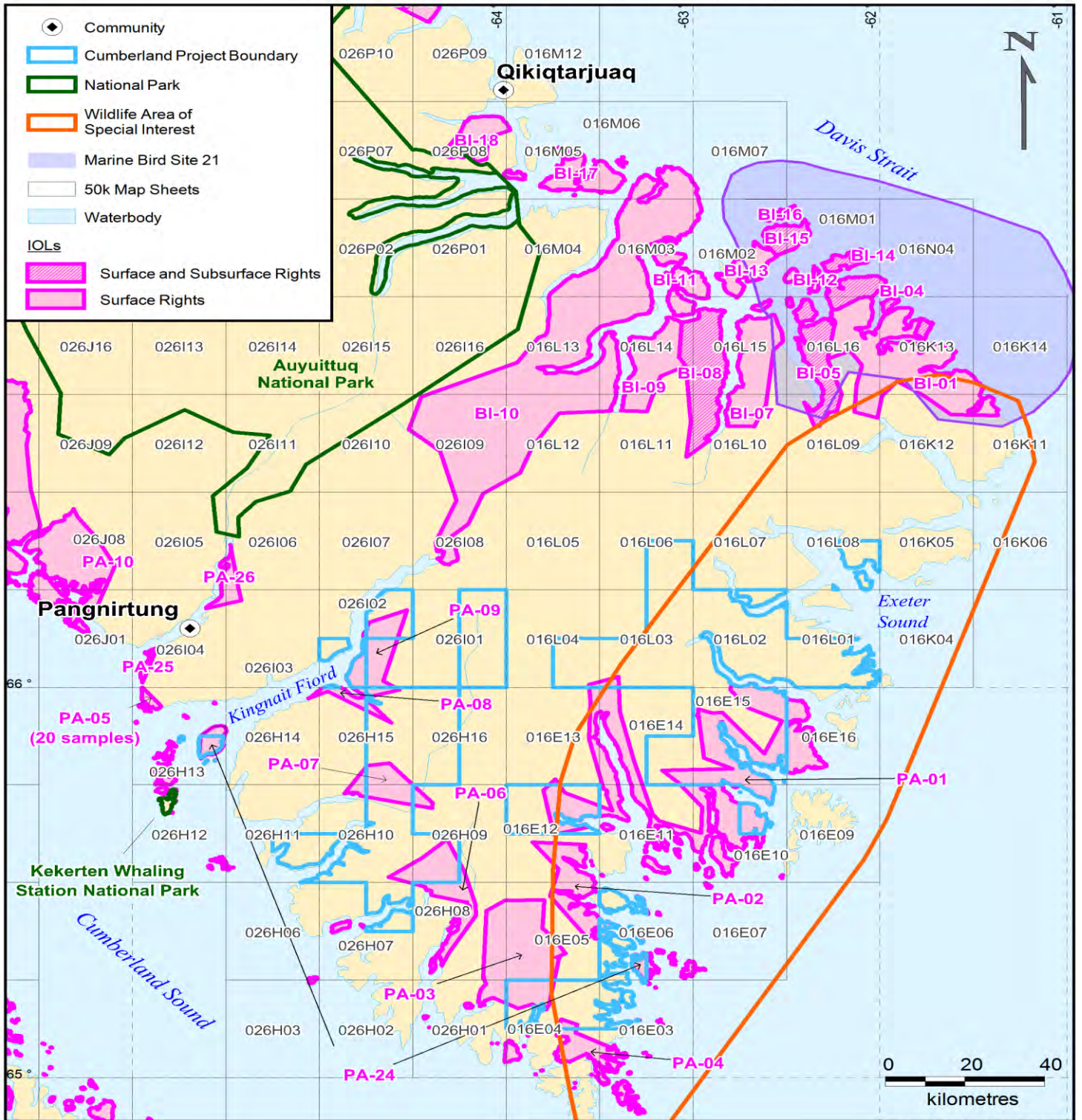
CHI_SSP_121012_CH6Layout_ARPT.wor

CH-6 Camp will be established to support bulk sampling. As shown in the photo at the top of Page 7, only 2 sheds and 8 tent floors currently are on site; the layout above is proposed. Tents can be established later on the plywood bases left behind, and an additional row of tents erected as shown. Fuel and fuel berms are not yet established.

Peregrine Diamonds Ltd.

Cumberland Project 2012, Prospecting Permit Locations
in relation to Special Areas and Inuit and Crown Lands

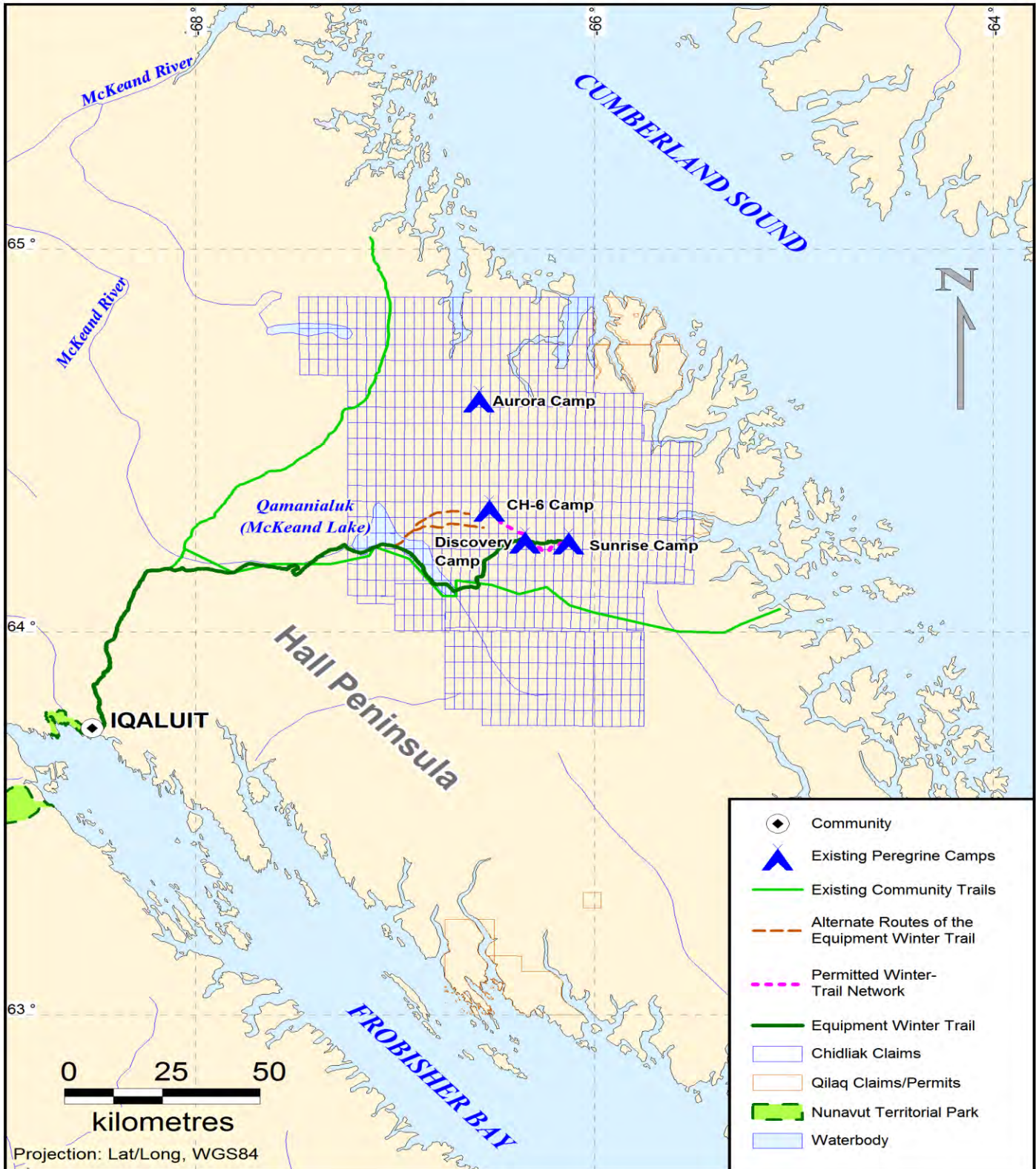
Map 7



Cumberland Project Prospecting Permit boundaries are shown in relation to Cumberland Peninsula IOLs, parks, the Wildlife Area of Special Interest (a polar bear denning and coastal hunting area) and the Canadian Wildlife Service Marine Migratory Bird Site #21. No sampling programme occurred in 2012 either on Crown Land or on IOLs under QIA Land Licence #Q10L1C014-Extension.

**Peregrine Diamonds Inc.
Equipment Winter Trail and Winter-Trail Network
in relation to Community Trails through Chidliak Project Area**

MAP 8



DARK GREEN line above depicts the winter equipment trail that was scouted and then travelled from Iqaluit to Sunrise and Discovery Camps in spring 2012. The purpose of scouting and trial-run trips was to ensure proper routings were selected for the future trail to serve the bulk-sampling programme.

TABLE

15/10/2012

PEREGRINE DIAMONDS LTD. - 2012 DRILL LOG FOR CHIDLIAK PROJECT

NOTE 1: "RC" refers to short-hole heli-portable, waterless Hornet drill used since 2010. "DD" refers to LM-55 core drill

NOTE 2: "CHI" = Chidiak drillholes. NOTE 3: White = RC, Light Orange = Core.

Drillhole #	Easting (NAD83)	Northing (NAD83)	Zone	Lat. (WGS84)	Long. (WGS84)	Year	Drill Type	Length (m)	Elev. (m)	Topography	Start Date	End Date	FID.
CHI-050-12-RC01	619459.619	7135235.376	19	64.3221	-66.5287	2012	RC	5.60	678.032	Land	07 August 2012	07 August 2012	1
CHI-050-12-RC02	619405.116	7135166.081	19	64.3215	-66.5299	2012	RC	5.60	678.616	Land	08 August 2012	08 August 2012	2
CHI-050-12-RC03	619438.082	7135183.549	19	64.3217	-66.5292	2012	RC	5.60	678.508	Land	08 August 2012	08 August 2012	3
CHI-050-12-RC04	619434.862	7135211.531	19	64.3219	-66.5292	2012	RC	5.60	677.995	Land	09 August 2012	09 August 2012	4
CHI-050-12-RC05	619476.450	7135210.898	19	64.3219	-66.5284	2012	RC	5.60	678.524	Land	09 August 2012	09 August 2012	5
CHI-050-12-RC06	619469.932	7135250.894	19	64.3223	-66.5285	2012	RC	12.80	677.628	Land	09 August 2012	10 August 2012	6
CHI-050-12-RC07	619418.079	7135237.284	19	64.3222	-66.5296	2012	RC	5.60	676.793	Land	10 August 2012	10 August 2012	7
CHI-050-12-RC08	619407.237	7135195.342	19	64.3218	-66.5298	2012	RC	4.10	675.966	Land	11 August 2012	11 August 2012	8
CHI-050-12-RC09	619436.710	7135147.956	19	64.3214	-66.5293	2012	RC	18.90	678.813	Land	11 August 2012	11 August 2012	9
CHI-050-12-RC10	619456.892	7135199.938	19	64.3218	-66.5288	2012	RC	7.20	678.519	Land	11 August 2012	11 August 2012	10
CHI-050-12-RC11	619435.695	7135225.472	19	64.3221	-66.5292	2012	RC	7.20	677.276	Land	12 August 2012	12 August 2012	11
CHI-050-12-RC12	619500.739	7135214.875	19	64.322	-66.5279	2012	RC	8.70	679.055	Land	12 August 2012	12 August 2012	12
CHI-050-12-RC13	619481.415	7135232.820	19	64.3221	-66.5283	2012	RC	4.10	678.477	Land	12 August 2012	12 August 2012	13
CHI-050-12-RC14	619447.484	7135230.353	19	64.3221	-66.529	2012	RC	4.10	677.791	Land	12 August 2012	12 August 2012	14
CHI-050-12-RC15	619444.779	7135237.280	19	64.3222	-66.529	2012	RC	4.10	677.378	Land	13 August 2012	13 August 2012	15
CHI-050-12-RC16	619448.689	7135223.126	19	64.322	-66.5289	2012	RC	4.10	678.169	Land	13 August 2012	13 August 2012	16
CHI-050-12-RC17	619436.972	7135233.465	19	64.3221	-66.5292	2012	RC	4.10	677.527	Land	13 August 2012	13 August 2012	17
CHI-050-12-RC18	619399.147	7135199.160	19	64.3218	-66.53	2012	RC	4.10	675.643	Land	13 August 2012	13 August 2012	18
CHI-050-12-RC19	619399.859	7135187.921	20	64.3217	-66.53	2012	RC	4.10	675.640	Land	13 August 2012	13 August 2012	19
CHI-050-12-RC20	619408.084	7135201.923	19	64.3219	-66.5298	2012	RC	5.60	676.525	Land	14 August 2012	14 August 2012	20
CHI-251-12-DD15	628178.092	7127556.760	19	64.2502	-66.3552	2012	CORE	185.00	684.248	Land	05 July 2012	08 July 2012	1
CHI-251-12-DD16	628119.239	7127452.680	19	64.2493	-66.3565	2012	CORE	302.00	676.608	Land	09 July 2012	12 July 2012	2
CHI-251-12-DD17	628230.926	7127577.690	19	64.2503	-66.3541	2012	CORE	218.00	684.335	Land	13 July 2012	15 July 2012	3
CHI-251-12-DD18	628122.305	7127651.934	19	64.251	-66.3562	2012	CORE	278.00	685.199	Land	16 July 2012	20 July 2012	4
CHI-251-12-RC03	628199.319	7127582.002	19	64.2504	-66.3547	2012	RC	4.10	683.036	Land	14 August 2012	14 August 2012	21
CHI-251-12-RC04	628193.182	7127560.099	19	64.2502	-66.3549	2012	RC	5.20	682.460	Land	14 August 2012	14 August 2012	22
CHI-251-12-RC05	628176.159	7127525.388	19	64.2499	-66.3552	2012	RC	4.10	681.921	Land	14 August 2012	14 August 2012	23
CHI-258-12-DD09	629217.675	7124927.837	19	64.2262	-66.336	2012	CORE	298.00	639.777	Land	01 August 2012	04 August 2012	5
CHI-258-12-DD10	629197.124	7124878.862	19	64.2258	-66.3365	2012	CORE	62.00	638.159	Land	04 August 2012	05 August 2012	6
CHI-258-12-DD11	629182.345	7124824.472	19	64.2253	-66.3368	2012	CORE	170.00	638.134	Land	05 August 2012	07 August 2012	7
CHI-258-12-DD12	629189.280	7124859.274	19	64.2256	-66.3367	2012	CORE	228.50	638.603	Land	08 August 2012	10 August 2012	8
CHI-482-12-RC01	630544.326	7124572.633	19	64.2225	-66.309	2012	RC	4.00	646.620	Land	13 August 2012	13 August 2012	24
CHI-482-12-RC02	630629.555	7124576.552	19	64.2225	-66.3073	2012	RC	11.30	649.078	Land	13 August 2012	13 August 2012	25
CHI-482-12-RC03	630532.915	7124375.790	19	64.2208	-66.3094	2012	RC	2.40	645.465	Land	14 August 2012	14 August 2012	26

TABLE (cont.)

15/10/2012

PEREGRINE DIAMONDS LTD. - 2012 DRILL LOG FOR CHIDLIAK PROJECT

NOTE 1: "RC" refers to short-hole heli-portable, waterless Hornet drill used since 2010. "DD" refers to LM-55 core drill

NOTE 2: "CHI" = Chidiak drillholes. NOTE 3: White = RC, Light Orange = Core.

Drillhole #	Easting (NAD83)	Northing (NAD83)	Zone	Lat. (WGS84)	Long. (WGS84)	Year	Drill Type	Length (m)	Elev. (m)	Topography	Start Date	End Date	FID.
CHI-095-12-DD04	629190.135	7129243.520	19	64.2649	-66.3329	2012	CORE	137.00	739.255	Land	21 July 2012	24 July 2012	9
CHI-095-12-DD05	629235.465	7129318.464	19	64.2656	-66.3319	2012	CORE	250.00	741.878	Land	24 July 2012	28 July 2012	10
CHI-095-12-DD06	629276.706	7129200.846	19	64.2645	-66.3311	2012	CORE	250.00	741.657	Land	29 July 2012	31 July 2012	11

TOTAL DRILLING METRES:

2,536.40

TOTAL Core-Drill Metres:

2,378.50

TOTAL RC(Hornet Drill) Metres:

157.90

Amongst Peregrine's Baffin Island projects, drilling occurred only on the Chidiak Project in 2012. Drilling occurred only on Crown Land.