



## STORNOWAY VENTURES LTD..

A NORTHAIR GROUP COMPANY

SUITE 860 - 625 HOWE STREET • VANCOUVER, BC • V6C 2T6 CANADA • TEL: 604-687-7545 FAX: 604-689-5041

TECHNICAL OFFICE:

SUITE 1300-409 GRANVILLE STREET • VANCOUVER, BC • V6C 1T2 • CANADA • TEL: 604-668-8355 FAX: 604-668-8366

December 6, 2002

Rita Becker  
Licensing Administrator  
Nunvaut Water Board  
P.O. Box 119  
Gjoa Haven, Nunavut  
X0B 1J0

Nunavut Water

17 2002

Pub Registry

INTERNAL	
PC	IP
LA	
OM	
TA	
BS	
ST	
ED	
CEO	
BRD	
EXT.	

Re: NWB License NWB2COR0204 (Stornoway Ventures)

Dear Ms. Becker,

Please find enclosed three copies of an annual report which briefly describes Stornoway Ventures' 2002 summer till sampling program. As mentioned in the report results from this program are still forthcoming, with complete results not expected until February 2003. We will inform NWB of our plans for the Coronation Properties in 2003 once they have been established.

If you have any questions regarding the attached reports or license NWB2COR0204 please feel free to contact either myself or Robin Hopkins at Stornoway's technical office.

Yours truly,  
STORNOWAYS VENTURES LTD.

Ken Armstrong

Enclosures

021206 COR Annual Report - 1 LAE

**Stornaway Ventures Ltd.**  
**Coronation Gulf Diamond District, NU**

Nunavut Water Board License # NWB2COR0205

Summary

During the summer of 2002, Stornaway Ventures Ltd. conducted exploration activities on mineral claims covering 1,252,000 acres located in the greater Coronation Gulf Area. Activities included the collection of approximately 2400 till samples, both as part of a regional program and as more specific samples intended to follow up identified geophysical anomalies. Details of the 2002 program are provided below.

Background and General Program Description

The 2002 program was conducted under the authority of Nunavut Water Board (NWB) License NWB2COR0205 (expires October 31, 2005), DIAND Land Use Permit N2002J0019 (expires December 5, 2004), and, where appropriate, KIA License KTL302C011 (expires May 31, 2002). The above noted NWB license extends for the period of May 6, 2002 to October 31, 2005. This report is to serve as an Annual Report for the purposes outlining the land and water use activities as authorized under the water license.

The 2002 work program was conducted from June 5<sup>th</sup> to August 22<sup>nd</sup>, 2002. Personnel were housed in two separate campsites, as will be described.

Till Sampling

Till samples were collected at 500m intervals along lines oriented roughly perpendicular to the direction of the last recorded ice movement (+/-340) and separated by 4 to 5 km. Sample lines were traversed by foot, allowing for detailed ground observations and prospecting for signs of possible kimberlitic float. Approximately 2400 samples were collected a number of which represent target specific samples intended to test geophysical anomalies, that remained unexplained after ground checking.

A Hughes 500D helicopter, chartered from Great Slave Helicopters of Yellowknife, was responsible for setting out and picking up of the sampling crew and ferrying of samples during the day. The helicopter also served as a safety resource for the crew. Samples were amassed in camp and flown to Yellowknife and Lupin via Twin Otter fixed wing aircraft chartered from Arctic Sunwest of Yellowknife.

Camps

Two sites were chosen to be points of operations during the season. The first camp, occupied from June 5<sup>th</sup> to July 8<sup>th</sup>, was located at UTM zone 12, 382700E, 7442700N (NTS map

sheet 86P/04) providing a base from which the sampling was conducted on the southern areas of interest.

The second camp was occupied from July 13<sup>th</sup> to August 22<sup>nd</sup> and was located at UTM zone 12, 401600E, 7492385N (NTS map sheet 86 P/11). Nunavut Expediting of Yellowknife provided all expediting requirements for the program, including tent-camp building and sample-shipping control.

Each camp consisted of five 14' x 16' wood framed, Jutland Tents. The kitchen, and a dry occupied two tents, while the remaining tents were used for accommodation.

#### Water Use and Waste disposal

An estimated 100L of water were used per day for domestic consumption (i.e. washing, food preparation, etc.) at each of the camps. Combustible wastes were burned on site, while non-combustible materials were backhauled to Yellowknife for suitable disposal. Sumps for blackwater and greywater, located more than 30 meters from the high tide mark, were backfilled prior to leaving each site. There were no fuel spills during the 2002 program and the abandonment/reclamation and contingency plans have not been changed.

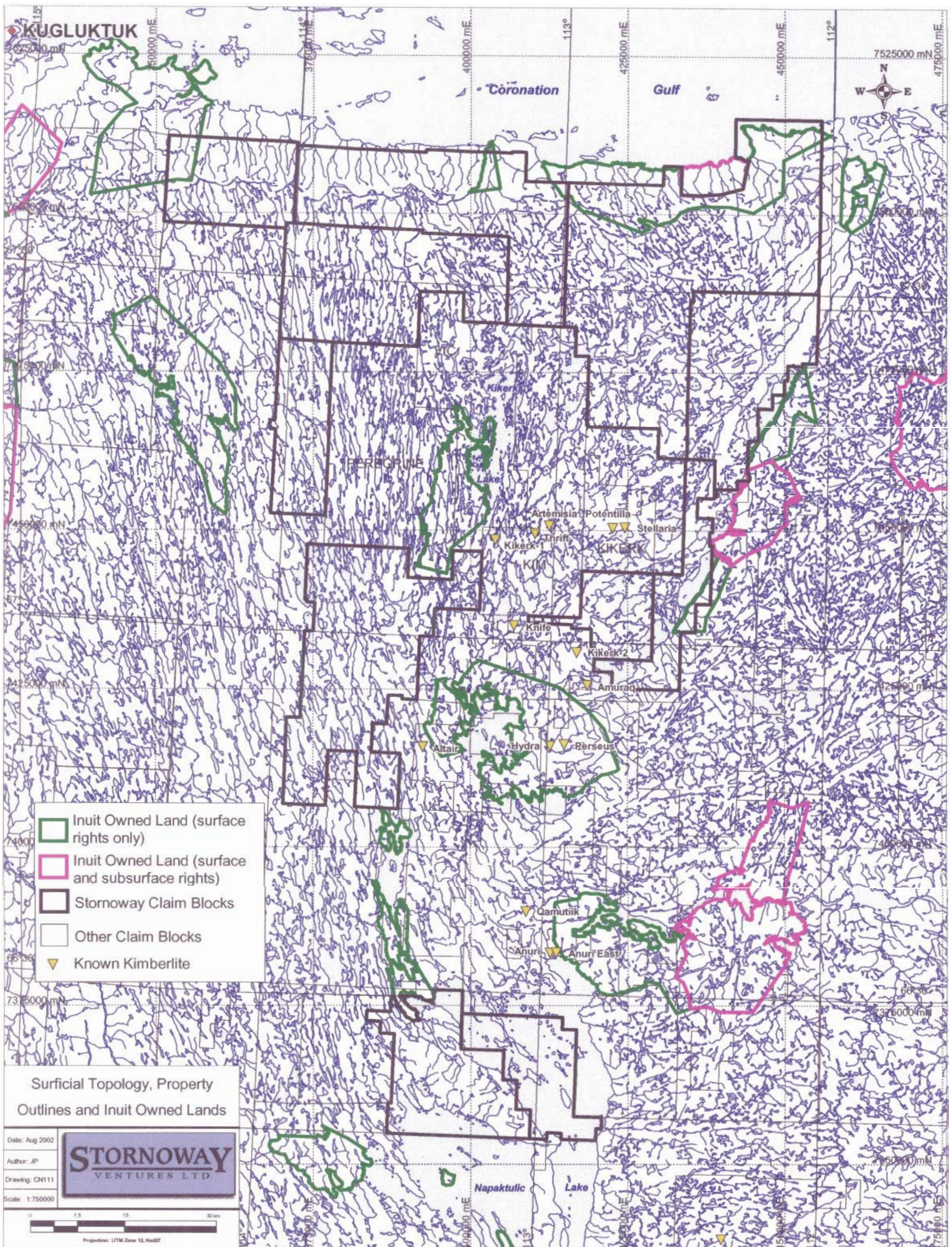
#### Future Plans

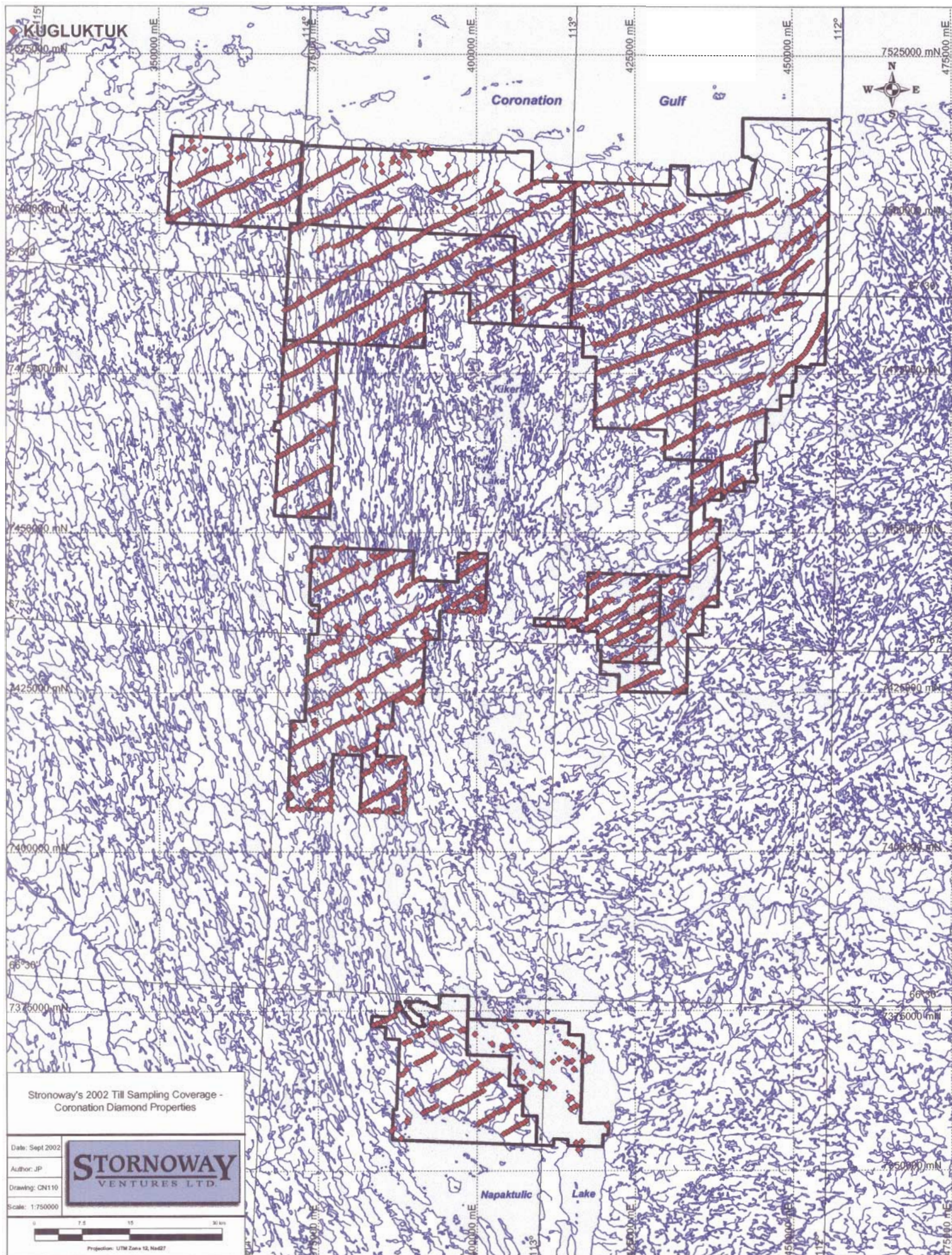
Samples from the 2002 regional till program are still being processed. Results from this processing must be reviewed prior to finalizing plans for a program in 2003. Future work may include further till sampling, ground-based geophysics, and, if results warrant, exploratory drilling. If you have any questions or comments, do not hesitate to contact either Robin Hopkins, or Ken Armstrong at (604) 668-8355, or email at [navigator@telus.net](mailto:navigator@telus.net).

#### Attached figures

Claim outlines 1:100,000

Sampling Locations 1:100,000





**Stornaway Ventures Ltd.**  
**Coronation Gulf Diamond District, NU**

Nunavut Water Board License # NWB2COR0205

Summary

During the summer of 2002, Stornaway Ventures Ltd. conducted exploration activities on mineral claims covering 1,252,000 acres located in the greater Coronation Gulf Area. Activities included the collection of approximately 2400 till samples, both as part of a regional program and as more specific samples intended to follow up identified geophysical anomalies. Details of the 2002 program are provided below.

Background and General Program Description

The 20002 program was conducted under the authority of Nunavut Water Board (NWB) License NWB2COR0205 (expires October 31, 2005), DIAND Land Use Permit N2002J0019 (expires December 5, 2004), and, where appropriate, KIA License KTL302C011 (expires May 31, 2002). The above noted NWB license extends for the period of May 6, 2002 to October 31, 2005. This report is to serve as an Annual Report for the purposes outlining the land and water use activities as authorized under the water license.

The 2002 work program was conducted from June 5<sup>th</sup> to August 22<sup>nd</sup>, 2002. Personnel were housed in two separate campsites, as will be described.

Till Sampling

Till samples were collected at 500m intervals along lines oriented roughly perpendicular to the direction of the last recorded ice movement (+/-340) and separated by 4 to 5 km. Sample lines were traversed by foot, allowing for detailed ground observations and prospecting for signs of possible kimberlitic float. Approximately 2400 samples were collected a number of which represent target specific samples intended to test geophysical anomalies, that remained unexplained after ground checking.

A Hughes 500D helicopter, chartered from Great Slave Helicopters of Yellowknife, was responsible for setting out and picking up of the sampling crew and ferrying of samples during the day. The helicopter also served as a safety resource for the crew. Samples were amassed in camp and flown to Yellowknife and Lupin via Twin Otter fixed wing aircraft chartered from Arctic Sunwest of Yellowknife.

Camps

Two sites were chosen to be points of operations during the season. The first camp, occupied from June 5<sup>th</sup> to July 8<sup>th</sup>, was located at UTM zone 12, 382700E, 7442700N (NTS map

sheet 86P/04) providing a base from which the sampling was conducted on the southern areas of interest.

The second camp was occupied from July 13<sup>th</sup> to August 22<sup>nd</sup> and was located at UTM zone 12, 401600E, 7492385N (NTS map sheet 86 P/11). Nunavut Expediting of Yellowknife provided all expediting requirements for the program, including tent-camp building and sample-shipping control.

Each camp consisted of five 14' x 16' wood framed, Jutland Tents. The kitchen, and a dry occupied two tents, while the remaining tents were used for accommodation.

#### Water Use and Waste disposal

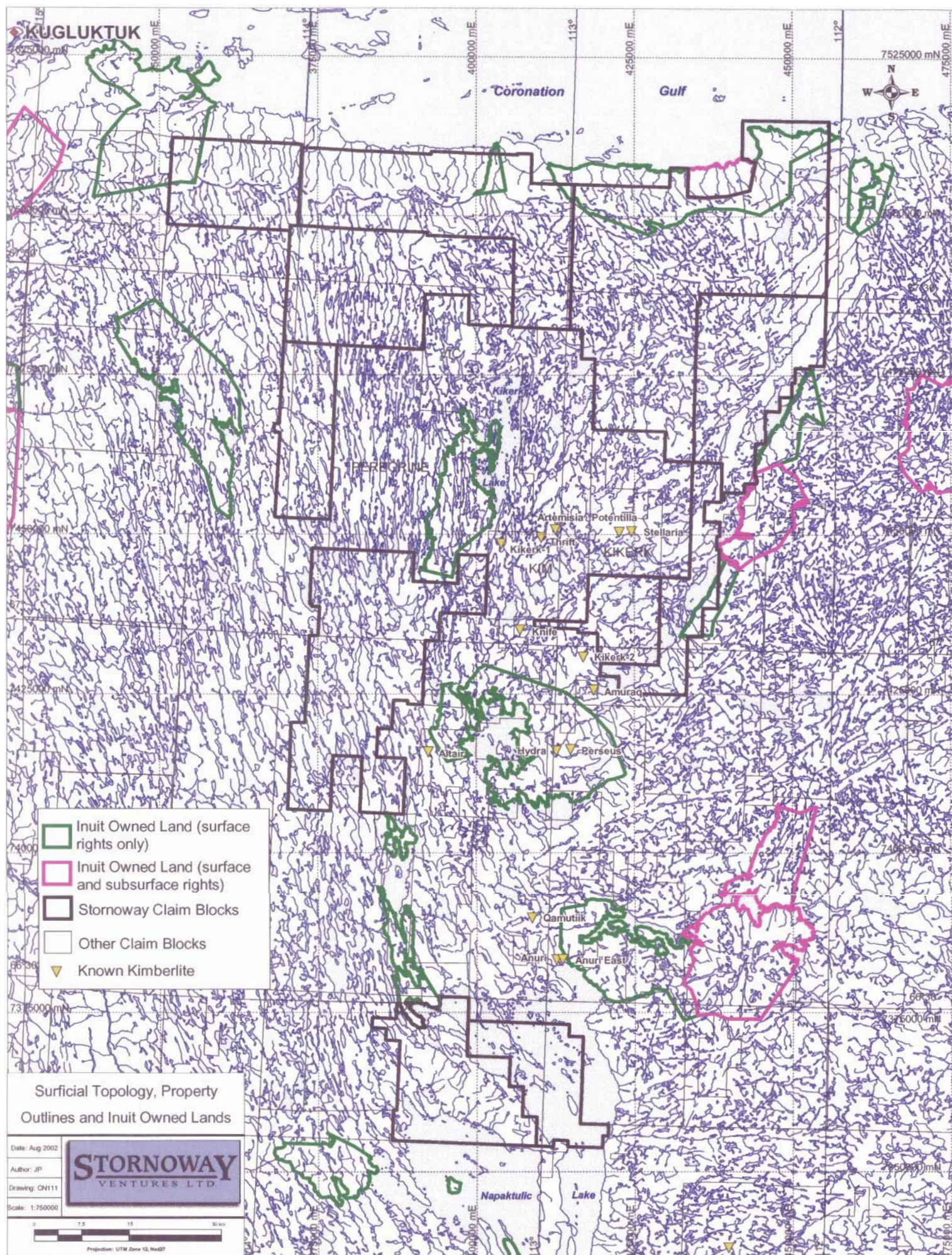
An estimated 100L of water were used per day for domestic consumption (i.e. washing, food preparation, etc.) at each of the camps. Combustible wastes were burned on site, while non-combustible materials were backhauled to Yellowknife for suitable disposal. Sumps for blackwater and greywater, located more than 30 meters from the high tide mark, were backfilled prior to leaving each site. There were no fuel spills during the 2002 program and the abandonment/reclamation and contingency plans have not been changed.

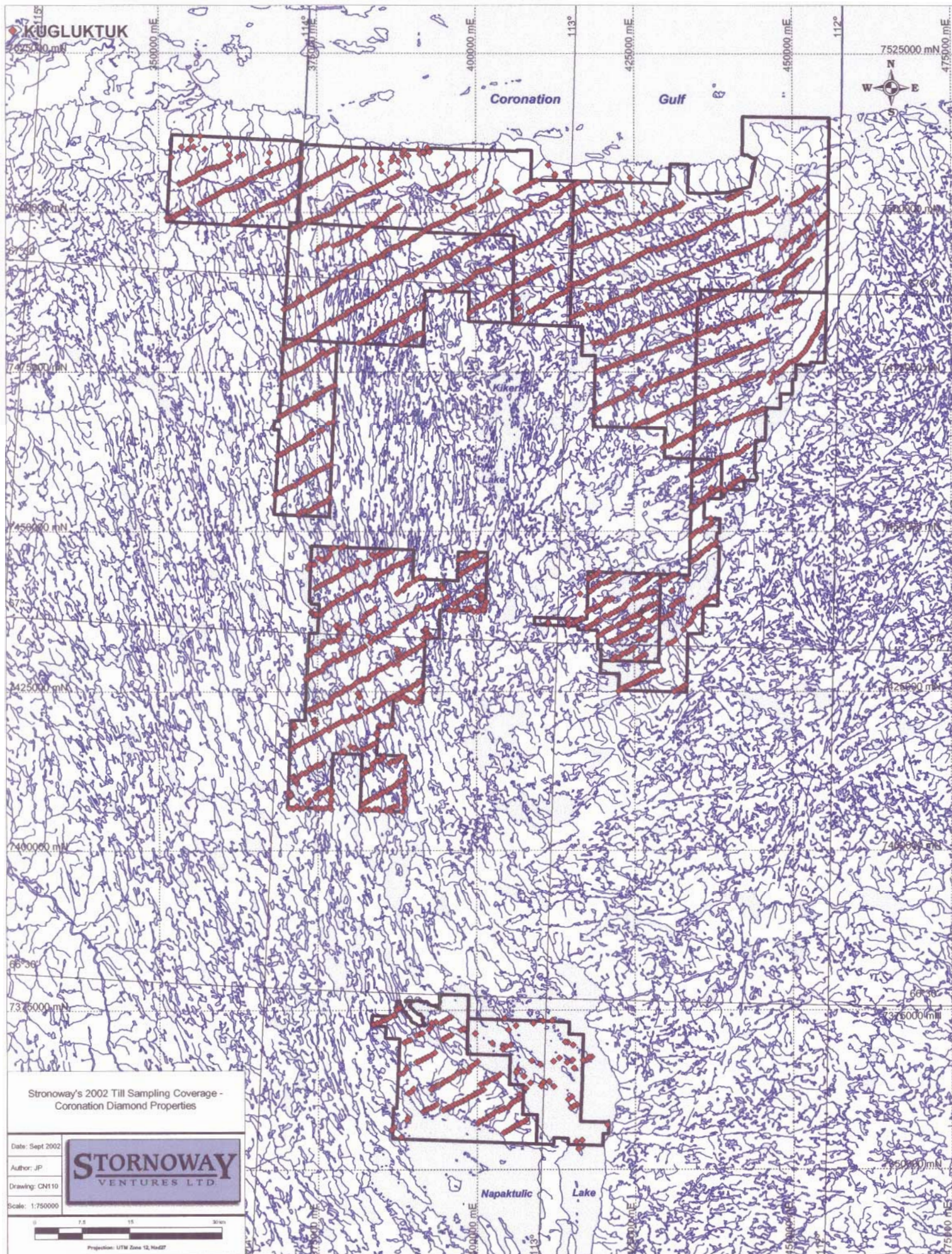
#### Future Plans

Samples from the 2002 regional till program are still being processed. Results from this processing must be reviewed prior to finalizing plans for a program in 2003. Future work may include further till sampling, ground-based geophysics, and, if results warrant, exploratory drilling. If you have any questions or comments, do not hesitate to contact either Robin Hopkins, or Ken Armstrong at (604) 668-8355, or email at [navigator@telus.net](mailto:navigator@telus.net).

#### Attached figures

Claim outlines 1:100,000  
Sampling Locations 1:100,000





**Stornaway Ventures Ltd.**  
**Coronation Gulf Diamond District, NU**

Nunavut Water Board License # NWB2COR0205

Summary

During the summer of 2002, Stornaway Ventures Ltd. conducted exploration activities on mineral claims covering 1,252,000 acres located in the greater Coronation Gulf Area. Activities included the collection of approximately 2400 till samples, both as part of a regional program and as more specific samples intended to follow up identified geophysical anomalies. Details of the 2002 program are provided below.

Background and General Program Description

The 2002 program was conducted under the authority of Nunavut Water Board (NWB) License NWB2COR0205 (expires October 31, 2005), DIAND Land Use Permit N2002J0019 (expires December 5, 2004), and, where appropriate, KIA License KTL302C011 (expires May 31, 2002). The above noted NWB license extends for the period of May 6, 2002 to October 31, 2005. This report is to serve as an Annual Report for the purposes outlining the land and water use activities as authorized under the water license.

The 2002 work program was conducted from June 5<sup>th</sup> to August 22<sup>nd</sup>, 2002. Personnel were housed in two separate campsites, as will be described.

Till Sampling

Till samples were collected at 500m intervals along lines oriented roughly perpendicular to the direction of the last recorded ice movement (+/-340) and separated by 4 to 5 km. Sample lines were traversed by foot, allowing for detailed ground observations and prospecting for signs of possible kimberlitic float. Approximately 2400 samples were collected a number of which represent target specific samples intended to test geophysical anomalies, that remained unexplained after ground checking.

A Hughes 500D helicopter, chartered from Great Slave Helicopters of Yellowknife, was responsible for setting out and picking up of the sampling crew and ferrying of samples during the day. The helicopter also served as a safety resource for the crew. Samples were amassed in camp and flown to Yellowknife and Lupin via Twin Otter fixed wing aircraft chartered from Arctic Sunwest of Yellowknife.

Camps

Two sites were chosen to be points of operations during the season. The first camp, occupied from June 5<sup>th</sup> to July 8<sup>th</sup>, was located at UTM zone 12, 382700E, 7442700N (NTS map

sheet 86P/04) providing a base from which the sampling was conducted on the southern areas of interest.

The second camp was occupied from July 13<sup>th</sup> to August 22<sup>nd</sup> and was located at UTM zone 12, 401600E, 7492385N (NTS map sheet 86 P/11). Nunavut Expediting of Yellowknife provided all expediting requirements for the program, including tent-camp building and sample-shipping control.

Each camp consisted of five 14' x 16' wood framed, Jutland Tents. The kitchen, and a dry occupied two tents, while the remaining tents were used for accommodation.

#### Water Use and Waste disposal

An estimated 100L of water were used per day for domestic consumption (i.e. washing, food preparation, etc.) at each of the camps. Combustible wastes were burned on site, while non-combustible materials were backhauled to Yellowknife for suitable disposal. Sumps for blackwater and greywater, located more than 30 meters from the high tide mark, were backfilled prior to leaving each site. There were no fuel spills during the 2002 program and the abandonment/reclamation and contingency plans have not been changed.

#### Future Plans

Samples from the 2002 regional till program are still being processed. Results from this processing must be reviewed prior to finalizing plans for a program in 2003. Future work may include further till sampling, ground-based geophysics, and, if results warrant, exploratory drilling. If you have any questions or comments, do not hesitate to contact either Robin Hopkins, or Ken Armstrong at (604) 668-8355, or email at [navigator@telus.net](mailto:navigator@telus.net).

#### Attached figures

Claim outlines 1:100,000  
Sampling Locations 1:100,000

