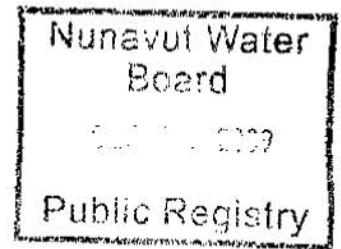


**Final Report
Nunavut Water Board License 2BE-COR0508
The Coronation Gulf Properties**



Introduction

This is to serve as the final report for Nunavut Water Board license NWB2COR0205 which expired October 31, 2005. This license was renewed as 2BE-COR0508 and expired October 21, 2008.

This project also operated under the authority of DIAND land use license N2002J0019 originally issued on May 13, 2002. The original license authorized exploration activities on 11 different claim groups/properties in the Coronation Gulf area located on NTS Map Sheets 86/O and 86/P, as well as the establishment of 2 temporary exploration camps and 3 "fly camp" locations.

A small portion of the land use area was located on Inuit Owned Land and exploration activities on IOL Parcels CO-63, 64, 64 and 70 were authorized under Land Use License 3 KTL302C011 issued by the Kitikmeot Inuit Association on June 2, 2002 and expired May 21, 2004. No exploration activities took place on Inuit Owned Land Parcels after this time.

Exploration activities authorized on both Crown land and Inuit Owned Land Parcels included mapping, prospecting, till sampling, ground geophysics and diamond drilling. No camps were established on Inuit Owned Land at any time during the land use operations.

Land Use Area

The original land use area associated with this license was made up of 11 claim blocks/properties and consisted of 527 mineral claims. (Please see Appendix "A" for a figure showing the complete land use area and the camp locations associated with this license).

Over the years as the areas of interest were narrowed down claims were allowed to lapse and the land use area associated with Stornoway Diamond Corporation's ("Stornoway") Coronation Gulf properties has been greatly reduced.

Please see Appendix "B" for a listing of claims comprising the original land use area.

Land Use Activities - 2002

At the beginning of June 2002 the first temporary exploration camp was established at UTM zone 12, 382700mE, 7422700mN, and was occupied from June 5, 2002 to July 8, 2002. The camp consisted of six 14' x 16' wood framed Jutland tents, three of which served as accommodation and the remaining three as the office, kitchen and dry facilities.

Following spring breakup the lake adjacent to the camp was found to be unsuitable for float equipped aircraft and all tent floors, frames and equipment were moved to a more suitable location nearby. Both the Nunavut Water Board and DIAND were provided with notification of this change of camp location in 2002.

The new site, located at UTM zone 12, 384500E, 7436500N, was found to be accessible by both ski and float equipped aircraft and had a previously utilized, marked landing strip suitable for a Twin Otter to land on tundra tires and became known as the "Eureka" camp. This site was not occupied during the 2002 exploration season.

A second camp, the "Jubilee" camp was established in early July of 2002 at UTM zone 12, 401600E, 7492385N, and was occupied from July 13 to August 22 of 2002. This camp also consisted of six 14' x 16' wood framed Jutland tents which served as kitchen, dry, office and crew accommodation. A small wooden dock structure was also built at the lake edge in order to better facilitate the loading and offloading of the fixed wing aircraft servicing the camp (please see Appendix "C" for photograph).

All combustible camp waste was incinerated in a burn barrel (as was acceptable practice at the time that this program was conducted) and all non-combustible waste was kept in sealed 5 gallon pails and backhauled regularly to Yellowknife for proper disposal.

At the end of the season the both camps were prepared for winter storage leaving tent frames and floors, stovepipes, some wooden furniture and small caches of fuel stored in accordance with the Spill Contingency Plan for the project.

Exploration Activities and Logistics

During the 2002 exploration season the main focus of the activities was to carry out a broad based regional till sampling program over Stornoway's landholdings in the Coronation Gulf area. While the land use area associated with the early stages of the project was quite large the program was designed to have a minimal impact on the environment by using a small crew that, while supported by helicopter for the shuttling of themselves and the samples to and from the sites, traversed mainly on foot over pre-determined sample lines each day.

Samples were amassed at camp or at a central cache and flown each week to either Yellowknife or Lupin Mine where at both locations they were later shipped south for processing. Approximately 2,400 samples were collected during the 2002 exploration program with 55 of these taken on Inuit Owned Land.

The winter road from Yellowknife to Lupin Mine was utilized to position fuel for the program at Lupin Mine where regular fixed wing flights would ferry fuel, samples and supplies between both camp locations, Lupin, and Yellowknife.

No drilling activities took place under the authority of this license during 2002.

2003

Camp Facilities

The 2003 exploration program was conducted between June 5 and August 28, 2003 during which time personnel operated out of both the established "Eureka" and "Jubilee" temporary camp facilities as well as 3, small two person fly camps.

From June 5th to June 21st a single, two person crew operated out of the following fly camp locations:

"Camp Lake"	UTM zone 12, 414300E, 7436200N
"Horseshoe Lake"	UTM zone 12, 407600E, 7483800N
"Esker Airstrip"	UTM zone 12, 385100E, 7434500N

The two person crew utilized a temporary 6' x 4' dome tent as accommodation and spent approximately one week's time at each location. Both crew and their supplies were dropped off by a fixed wing aircraft at each location and all sampling activities took place on foot. Samples were transported back to each camp location via small non-motorized sleds and cached there until pick up by supporting aircraft.

All domestic waste associated with these operations was sealed in 5 gallon plastic pails and transported to Yellowknife for proper disposal and upon leaving each of the 3 sites little to evidence was left of the land use operation at the end of each week.

The Eureka camp was utilized from June 26 to July 24, 2003 and the Jubilee camp was occupied from July 29 to August 28, 2003. During these periods the camp population at both Eureka and Jubilee typically consisted of 8 personnel including 5 geologists or samplers, 1 geotechnician, 1 helicopter pilot and 1 cook.

All combustible camp waste was incinerated in a burn barrel (as was acceptable practice at the time that this program was conducted) and all non-combustible waste was kept in sealed 5 gallon pails and backhauled regularly to Yellowknife for proper disposal.

At the end of the season the both camps were prepared for winter storage leaving tent frames and floors, stovepipes, some wooden furniture and small caches of fuel stored in accordance with the Spill Contingency Plan for the project.

Exploration Activities

Exploration activities during 2003 were again focused on a carefully designed regional sampling program which again saw helicopter supported sampling crews traversing pre-determined sample lines each day. Approximately 2,682 samples were collected during the 2003 exploration season with 91 of these taken from Inuit Owned Land Parcels.

The winter road from Yellowknife to Lupin Mine was utilized to position fuel for the program at Lupin Mine where regular fixed wing flights would ferry fuel, samples and supplies between both camp locations, Lupin, and Yellowknife.

No drilling activities took place under the authority of this license during 2003.

2004

Camp Facilities

The 2004 exploration program took place from June 13 to July 28, 2004 during which time only the Eureka camp location was utilized.

The camp had a fluctuating population over this six week period with the minimum occupancy being 8 personnel consisting of four geologists, one project manager, one helicopter pilot, one engineer and one cook all of whom were there for the entire 6 weeks. For a period of 17 days this population increased with the addition of four drillers and one foreman and for a period of 16 days a crew of three geophysical personnel also based themselves from the camp.

All combustible camp waste was incinerated in a burn barrel (as was acceptable practice at the time that this program was conducted) and all non-combustible waste was kept in sealed 5 gallon pails and backhauled regularly to Yellowknife for proper disposal.

Although not utilized during the season as accommodation the Jubilee camp location was visited during the 2004 season to insure that there were no leaks in the fuel drums stored there and that the site was still in a clean and orderly state.

As in the previous years the winter road from Yellowknife to Lupin was utilized to position fuel for the program at Lupin Mine and the camp location was supported by regular fixed winged flights from Yellowknife

Exploration Activities

The exploration activities conducted in 2004 included a regional till sampling program, ground geophysical surveys, and a small diamond drilling program.

The till sampling program was conducted similarly to the ones conducted during the previous years being reported, with a total of 1493 samples collected over the course of the season. None of these samples were taken from Inuit Owned Land Parcels.

Aurora Geosciences Ltd. was contracted to carry out six ground geophysical surveys on the properties over a period of 16 days. Activities included gridding, total magnetic field and the limited use of horizontal-loop electromagnetics. The crew conducting the surveys was transported to their work areas by helicopter, and all surveys were traversed by foot.

A short drill program also took place over a course of 17 days on the Sceptre and Tiara properties during which time seven holes and approximately 800m was drilled.

The winter road from Yellowknife to Lupin Mine was utilized to position fuel for the program at Lupin Mine where regular fixed wing flights would ferry fuel, samples and supplies between both camp locations, Lupin, and Yellowknife.

2005

Camp Facilities

In 2005 neither the Jubilee nor the Eureka camp was occupied. A small regional till sampling program was conducted from August 18th through to September 9th however the 2 person sampling crew and their helicopter pilot stayed at Lupin Mine.

Both camp sites were visited during 2005 and were used as fuel cache locations at various stages throughout the program. At the end of the season less than 10 drums of fuel remained cached at each of the respective sites and was stored in accordance with the Spill Contingency Plan for this project.

Exploration Activities

A small regional till sampling program was conducted in 2005. Over a 21 day period a two person sampling crew collected 257 till samples on selected properties covered under the authority of this license. The two samplers were ferried by helicopter to the sampling sites, and none of the samples were taken from Inuit Owned Land Parcels.

No drilling activities took place under the authority of this license during 2005.

2006

No exploration activities were conducted under the authority of this license during 2006 and both the Eureka and Jubilee camps remained in states of winterization/storage.

2007

No exploration activities were conducted under the authority of this license during 2007 and both the Eureka and Jubilee camps remained in states of winterization/storage.

Abandonment and Reclamation

Exploration Activities

The exploration activities conducted under the authority of this land use permit were all low impact in nature and scope and upon completion of the abandonment and reclamation procedures specific to each activity left little to no evidence of the land use operation.

Till sampling activities, which were primarily helicopter supported, involved the collection of 2kg to 20kg bags of unconsolidated material using ordinary hand shovels. Upon completion of the collection of each sample the ground was typically recontoured to ensure that no divots were left that could prove dangerous to wildlife or traditional users of the land.

Ground geophysics requires a control grid to be established involving the placement of wooden pickets at regularly spaced intervals. The established grid was then traversed by a ground crew with a hand held geophysical instrument which causes no damage to

wildlife or vegetation. All of the land use area utilized during this activity was preserved its original condition.

The drilling activities that took place under the authority of this land use permit were entirely helicopter supported (i.e. transport of drill rig and personnel), and caused minimum disturbance to the land use area. There was no clearing or leveling of drill sites.

A minimal amount of fuel stored in 205 l drums was kept at each drill site, only in quantities enough to ensure uninterrupted operation of the equipment. As per the Spill Contingency Plan for this land use operation absorbent pads/mats were used during all refueling activities and were placed at strategic areas around the drill rig. Fuel was transported to the drill site on an as needed basis from larger caches based at either the Eureka camp or Lupin Mine.

All drilling additives used during the course of the program were biodegradable, and where applicable, the drill was accompanied by a "Poly Drill" or similar filtration system to treat return water.

Each drill site used a maximum area of 20x20m, or 400m², and upon the completion of each drill hole the tubular metal casing was removed or cut-off at ground level, and all materials (including empty fuel drums) were removed from the drill site area. The time spent at each drill site was typically no more than three days.

Camp Facilities

Abandonment and restoration activities were completed on the first "Eureka" site which was occupied from June 5, 2002 to July 8, 2002 immediately after the tent frames and equipment were moved to the more suitable site. The greywater and latrine sumps were backfilled and recontoured to match the surrounding landscape and little to no evidence of the land use operation remained.

At the end of each season that Eureka and Jubilee were occupied tents and other valuable items were demobilized and the remainder of the camp put into a winterized or storage mode typically leaving only the wooden tent frames and floors, wooden furniture, stove pipes, and a small cache of fuel at the camp locations. All garbage and empty drums were removed from the sites and backhauled to Yellowknife for proper disposal.

Over the period of September 2, 2008 through to September 4, 2008 Discovery Mining Services completed final abandonment and restoration activities at the Jubilee camp site.

All tent frames and wooden furniture were burned and the ashes raked for any left over nails or metal components. The temporary dock structure was removed from the lakeshore and it was insured that all of the previous sump locations were properly backfilled and the surface recontoured to match the surrounding landscape. The stovepipes and fuel that have been previously identified as items being stored at the site were backhauled to Yellowknife for proper disposal at an approved facility.

Upon completion of the restoration activities conducted at the Jubilee camp there was little to no evidence of the land use operation. Please see Appendix "C" for photographs of the reclaimed area.

Conclusion

At this time all abandonment and reclamation activities have been completed for the Jubilee camp and we request that this location be slated for a final inspection.

The Eureka camp still remains in storage mode (as detailed in the previous section) and a storage permit has been granted for this license which expires on June 12, 2010. On July 21, 2009 a representative of Stornoway visited the camp location and found the drums of diesel and Jet B stored at the site to be in good condition and free from any signs of leakage.

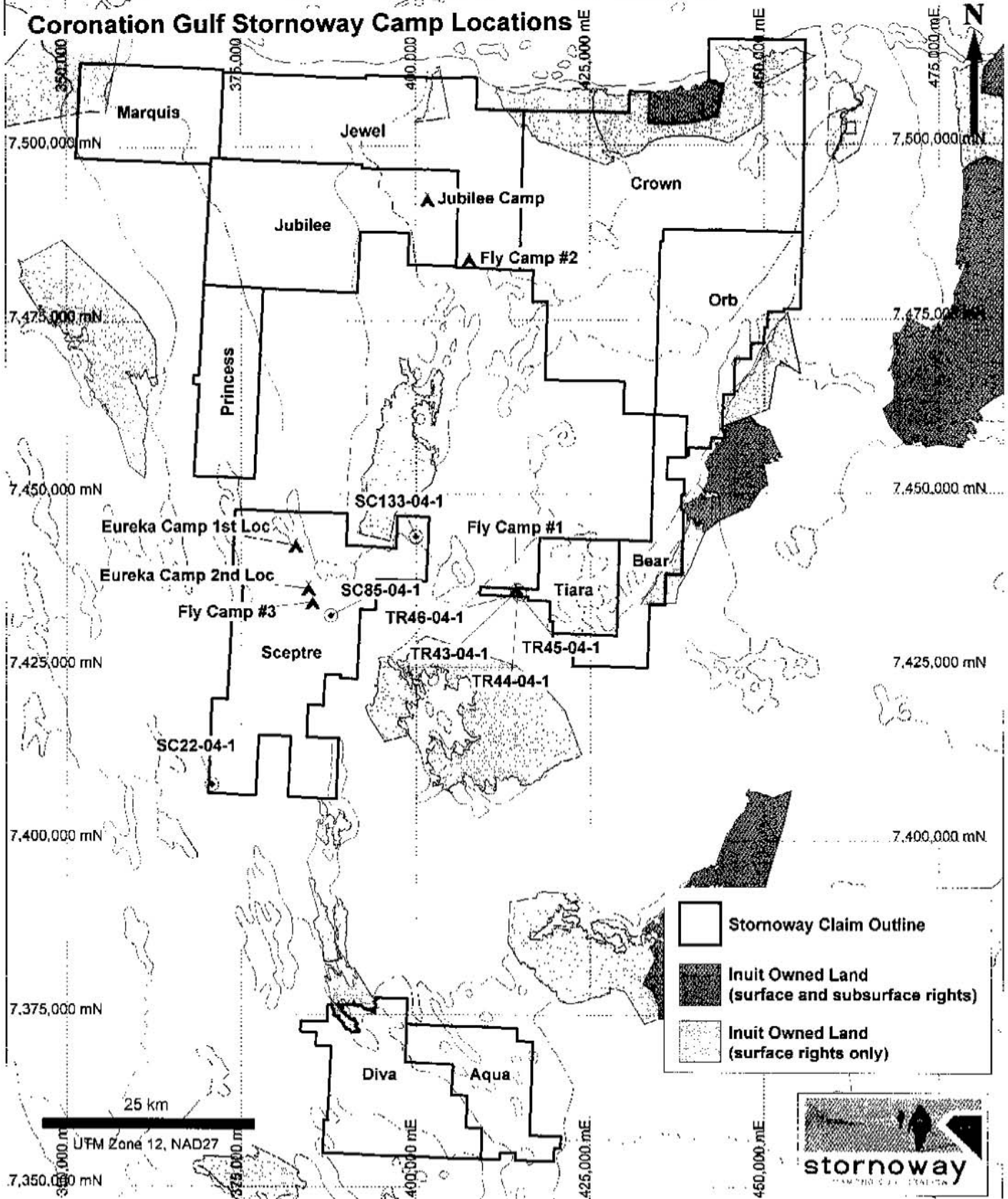
With Stornoway's take over of Ashton Mining Canada Inc. in 2006 the company found itself with a total of 4 camp site locations in the Coronation Gulf region. In 2008 abandonment and reclamation activities were completed at two other locations as well as Jubilee leaving only the Eureka site remaining. Plans for the future use of this site remain speculative however since Stornoway does still have mineral claims in the Coronation Gulf region it seems prudent to retain one camp within the area instead of reclaiming this area and then rebuilding in another site at a later date.

Once future plans for the Eureka camp site have been established an application for a new water license will be submitted to the Nunavut Water Board and an application for a new land use license will be submitted to INAC (to whom a similar report has been submitted as a final land use plan for N2002J0019) detailing the new, reduced land use area as well as occupancy plans for the one remaining camp facility.

APPENDIX “A”

Figure – Land Use Area

Coronation Gulf Stornoway Camp Locations



APPENDIX “B”

Land Use Area – Mineral Claims Listing

Mineral Claims - Land Use Area
Land Use License N2002J0019

Property Name	Claim Number	Claim Name	Property Name	Claim Number	Claim Name
Crown	F73551	EH 1	Crown	F73945	H 27
Crown	F73560	EH 10	Crown	F73946	H 28
Crown	F73561	EH 11	Crown	F73947	H 29
Crown	F73562	EH 12	Crown	F73921	H 3
Crown	F73563	EH 13	Crown	F73948	H 30
Crown	F73564	EH 14	Crown	F73949	H 31
Crown	F73565	EH 15	Crown	F73950	H 32
Crown	F73566	EH 16	Crown	F73951	H 33
Crown	F73567	EH 17	Crown	F73952	H 34
Crown	F73568	EH 18	Crown	F73953	H 35
Crown	F73569	EH 19	Crown	F73954	H 36
Crown	F73552	EH 2	Crown	F73957	H 39
Crown	F73570	EH 20	Crown	F73958	H 40
Crown	F73571	EH 21	Crown	F73959	H 41
Crown	F73572	EH 22	Crown	F73960	H 42
Crown	F73573	EH 23	Crown	F73961	H 43
Crown	F73574	EH 24	Crown	F73962	H 44
Crown	F73575	EH 25	Crown	F73963	H 45
Crown	F73576	EH 26	Crown	F73964	H 46
Crown	F73577	EH 27	Crown	F73965	H 47
Crown	F73578	EH 28	Crown	F73968	H 50
Crown	F73579	EH 29	Crown	F73969	H 51
Crown	F73553	EH 3	Crown	F73970	H 52
Crown	F73580	EH 30	Crown	F73971	H 53
Crown	F73581	EH 31	Crown	F73972	H 54
Crown	F73582	EH 32	Crown	F73973	H 55
Crown	F73583	EH 33	Crown	F73974	H 56
Crown	F73584	EH 34	Crown	F73975	H 57
Crown	F73585	EH 35	Crown	F73976	H 58
Crown	F73586	EH 36	Crown	F73924	H 6
Crown	F73554	EH 4	Crown	F73925	H 7
Crown	F73555	EH 5	Crown	F73926	H 8
Crown	F73556	EH 6	Crown	F73927	H 9
Crown	F73557	EH 7	Crown	F73772	HE 142
Crown	F73558	EH 8	Crown	F73773	HE 143
Crown	F73559	EH 9	Crown	F73774	HE 144
Crown	F73919	H 1	Crown	F73775	HE 145
Crown	F73928	H 10	Crown	F73776	HE 146
Crown	F73829	H 11	Crown	F73777	HE 147
Crown	F73930	H 12	Crown	F73778	HE 148
Crown	F73931	H 13	Crown	F73779	HE 149
Crown	F73932	H 14	Crown	F73780	HE 150
Crown	F73933	H 15	Crown	F73781	HE 151
Crown	F73934	H 16	Crown	F73782	HE 152
Crown	F73935	H 17	Crown	F73783	HE 153
Crown	F73936	H 18	Crown	F73784	HE 154
Crown	F73937	H 19	Crown	F73785	HE 155
Crown	F73920	H 2	Crown	F73786	HE 156
Crown	F73938	H 20	Crown	F73787	HE 157
Crown	F73939	H 21	Crown	F73788	HE 158
Crown	F73940	H 22	Crown	F73789	HE 159
Crown	F73941	H 23	Crown	F73790	HE 160
Crown	F73942	H 24	Crown	F73791	HE 161
Crown	F73943	H 25	Crown	F73792	HE 162
Crown	F73944	H 26	Crown	F73793	HE 163

Mineral Claims - Land Use Area
Land Use License N2002J0019

Property Name	Claim Number	Claim Name		Property Name	Claim Number	Claim Name
Crown	F73794	HE 164		Jewel	F73824	HE 194
Crown	F73795	HE 165		Jewel	F73825	HE 195
Crown	F73796	HE 166		Jewel	F73826	HE 196
Crown	F73798	HE 168		Jewel	F73827	HE 197
Crown	F73799	HE 169		Jewel	F73828	HE 198
Crown	F73800	HE 170		Jewel	F73829	HE 199
Crown	F73801	HE 171		Jewel	F73830	HE 200
Crown	F73802	HE 172		Jewel	F73831	HE 201
Crown	F73803	HE 173		Jewel	F73832	HE 202
Crown	F73804	HE 174		Jewel	F73833	HE 203
Crown	F73805	HE 175		Jewel	F73834	HE 204
Crown	F73811	HE 181		Jewel	F73835	HE 205
Crown	F73797	HE 167		Jewel	F73836	HE 206
Princess	F73727	HE 117		Jewel	F73837	HE 207
Princess	F73728	HE 118		Jewel	F73838	HE 208
Princess	F73729	HE 119		Jewel	F73839	HE 209
Princess	F73750	HE 120		Jewel	F73840	HE 210
Princess	F73751	HE 121		Jewel	F73841	HE 211
Princess	F73752	HE 122		Jewel	F73842	HE 212
Princess	F73753	HE 123		Jewel	F73843	HE 213
Princess	F73754	HE 124		Jewel	F73844	HE 214
Princess	F73755	HE 125		Jewel	F73845	HE 215
Princess	F73756	HE 126		Jewel	F73846	HE 216
Princess	F73757	HE 127		Jewel	F73847	HE 217
Princess	F73758	HE 128		Jewel	F73848	HE 218
Princess	F73759	HE 129		Jewel	F73849	HE 219
Princess	F73760	HE 130		Jewel	F73850	HE 220
Princess	F73761	HE 131		Jewel	F73851	HE 221
Princess	F73762	HE 132		Jewel	F73702	HE 222
Princess	F73763	HE 133		Jewel	F73703	HE 223
Princess	F73764	HE 134		Jewel	F73704	HE 224
Princess	F73765	HE 135		Jewel	F73705	HE 225
Princess	F73766	HE 136		Jewel	F73706	HE 226
Princess	F73767	HE 137		Jewel	F70717	HE 227
Princess	F73768	HE 138		Jewel	F70718	HE 228
Princess	F73769	HE 139		Jewel	F73719	HE 229
Princess	F73770	HE 140		Jewel	F73720	HE 230
Princess	F73771	HE 141		Jewel	F73721	HE 231
Jewel	F73806	HE 176		Jewel	F73722	HE 232
Jewel	F73807	HE 177		Jewel	F73723	HE 233
Jewel	F73808	HE 178		Jewel	F73724	HE 234
Jewel	F73809	HE 179		Jewel	F73725	HE 235
Jewel	F73810	HE 180		Jewel	F73726	HE 236
Jewel	F73812	HE 182		Jewel	F60557	HE 237
Jewel	F73813	HE 183		Jewel	F60458	HE 238
Jewel	F73814	HE 184		Jewel	F60459	HE 239
Jewel	F73815	HE 185		Jewel	F60460	HE 240
Jewel	F73816	HE 186		Jewel	F62261	HE 241
Jewel	F73817	HE 187		Jewel	F62262	HE 242
Jewel	F73818	HE 188		Marquis	F62263	HE 243
Jewel	F73819	HE 189		Marquis	F62264	HE 244
Jewel	F73820	HE 190		Marquis	F62265	HE 245
Jewel	F73821	HE 191		Marquis	F62266	HE 246
Jewel	F73822	HE 192		Marquis	F62267	HE 247
Jewel	F73823	HE 193		Marquis	F62268	HE 248

Mineral Claims - Land Use Area
Land Use License N2002J0019

Property Name	Claim Number	Claim Name		Property Name	Claim Number	Claim Name
Marquis	F70619	HE 249		Jubilee	F73527	HE 77
Marquis	F73990	HE 250		Jubilee	F73528	HE 78
Marquis	F73991	HE 251		Jubilee	F73529	HE 79
Marquis	F73992	HE 252		Jubilee	F73530	HE 80
Marquis	F73993	HE 253		Jubilee	F73531	HE 81
Marquis	F73994	HE 254		Jubilee	F73532	HE 82
Marquis	F73995	HE 255		Jubilee	F73533	HE 83
Marquis	F73996	HE 256		Jubilee	F73534	HE 84
Marquis	F73997	HE 257		Jubilee	F73535	HE 85
Marquis	F73998	HE 258		Jubilee	F73536	HE 86
Marquis	F73999	HE 259		Jubilee	F73537	HE 87
Marquis	F74000	HE 260		Jubilee	F73538	HE 88
Marquis	F69355	HE 261		Jubilee	F73539	HE 89
Marquis	F69356	HE 262		Jubilee	F73540	HE 90
Marquis	F69357	HE 263		Jubilee	F73541	HE 91
Marquis	F69358	HE 264		Jubilee	F73542	HE 92
Marquis	F67146	HE 265		Jubilee	F73543	HE 93
Marquis	F67147	HE 266		Jubilee	F73544	HE 94
Marquis	F67148	HE 267		Jubilee	F73545	HE 95
Marquis	F67149	HE 268		Jubilee	F73546	HE 96
Marquis	F67150	HE 269		Jubilee	F73547	HE 97
Jubilee	F73493	HE 43		Orb	F73880	HK 10
Jubilee	F73494	HE 44		Orb	F73881	HK 11
Jubilee	F73495	HE 45		Orb	F73882	HK 12
Jubilee	F73496	HE 46		Orb	F73883	HK 13
Jubilee	F73497	HE 47		Orb	F73884	HK 14
Jubilee	F73498	HE 48		Orb	F73885	HK 15
Jubilee	F73499	HE 49		Orb	F73886	HK 16
Jubilee	F73500	HE 50		Orb	F73887	HK 17
Jubilee	F73501	HE 51		Orb	F73888	HK 18
Jubilee	F73502	HE 52		Orb	F73872	HK 2
Jubilee	F73503	HE 53		Orb	F73889	HK 19
Jubilee	F73504	HE 54		Orb	F73890	HK 20
Jubilee	F73505	HE 55		Orb	F73891	HK 21
Jubilee	F73506	HE 56		Orb	F73892	HK 22
Jubilee	F73507	HE 57		Orb	F73893	HK 23
Jubilee	F73508	HE 58		Orb	F73894	HK 24
Jubilee	F73509	HE 59		Orb	F73895	HK 25
Jubilee	F73510	HE 60		Orb	F73896	HK 26
Jubilee	F73511	HE 61		Orb	F73897	HK 27
Jubilee	F73512	HE 62		Orb	F73898	HK 28
Jubilee	F73513	HE 63		Orb	F73899	HK 29
Jubilee	F73514	HE 64		Orb	F73873	HK 3
Jubilee	F73515	HE 65		Orb	F73900	HK 30
Jubilee	F73516	HE 66		Orb	F73901	HK 31
Jubilee	F73517	HE 67		Orb	F73902	HK 32
Jubilee	F73518	HE 68		Orb	F73903	HK 33
Jubilee	F73519	HE 69		Orb	F73904	HK 34
Jubilee	F73520	HE 70		Orb	F73905	HK 35
Jubilee	F73521	HE 71		Orb	F73906	HK 36
Jubilee	F73522	HE 72		Orb	F73907	HK 37
Jubilee	F73523	HE 73		Orb	F73908	HK 38
Jubilee	F73524	HE 74		Orb	F73909	HK 39
Jubilee	F73525	HE 75		Orb	F73874	HK 4
Jubilee	F73526	HE 76		Orb	F73910	HK 40

Mineral Claims - Land Use Area
Land Use License N2002J0019

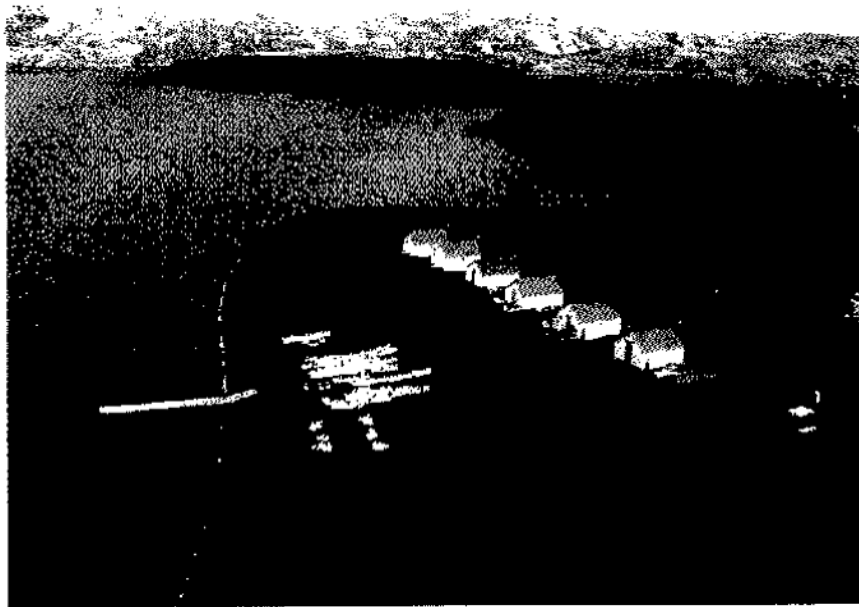
Property Name	Claim Number	Claim Name	Property Name	Claim Number	Claim Name
Orb	F73911	HK 41	Sceptre	F70561	TR 11
Orb	F73912	HK 42	Sceptre	F70563	TR 13
Orb	F73913	HK 43	Sceptre	F70564	TR 14
Orb	F73914	HK 44	Sceptre	F70565	TR 15
Orb	F73915	HK 45	Sceptre	F70552	TR 2
Orb	F73916	HK 46	Sceptre	F70572	TR 22
Orb	F73907	HK 47	Sceptre	F70573	TR 23
Orb	F73918	HK 48	Sceptre	F70574	TR 24
Orb	F73875	HK 5	Sceptre	F70576	TR 26
Orb	F73876	HK 6	Sceptre	F70575	TR 25
Orb	F73877	HK 7	Sceptre	F70577	TR 27
Orb	F73878	HK 8	Sceptre	F70553	TR 3
Orb	F73879	HK 9	Sceptre	F70584	TR 34
Bear	F73587	EH 37	Sceptre	F70585	TR 35
Bear	F73588	EH 38	Sceptre	F70586	TR 36
Bear	F73589	EH 39	Sceptre	F70587	TR 37
Bear	F73590	EH 40	Sceptre	F70588	TR 38
Bear	F73591	EH 41	Sceptre	F70589	TR 39
Bear	F73592	EH 42	Sceptre	F70596	TR 46
Bear	F73593	EH 43	Sceptre	F70597	TR 47
Bear	F73594	EH 44	Sceptre	F70598	TR 48
Bear	F73595	EH 45	Sceptre	F70599	TR 49
Bear	F73596	EH 46	Sceptre	F70600	TR 50
Bear	F73707	EH 47	Sceptre	F70601	TR 51
Bear	F73708	EH 48	Sceptre	F70602	TR 52
Bear	F73709	EH 49	Sceptre	F70603	TR 53
Bear	F73710	EH 50	Sceptre	F70604	TR 54
Bear	F73711	EH 51	Sceptre	F70605	TR 55
Bear	F73712	EH 52	Sceptre	F70595	TR 45
Bear	F73713	EH 53	Sceptre	F70555	TR 5
Bear	F73714	EH 54	Sceptre	F70556	TR 6
Bear	F73515	EH 55	Sceptre	F70557	TR 7
Bear	F73516	EH 56	Sceptre	F67574	TR 74
Bear	F73517	EH 57	Sceptre	F67575	TR 75
Bear	F73518	EH 58	Sceptre	F67576	TR 76
Bear	F73554	TSC1	Sceptre	F67577	TR 77
Bear	F73555	TSC2	Sceptre	F67578	TR 78
Sceptre	F70566	TR 16	Sceptre	F67579	TR 79
Sceptre	F70567	TR 17	Sceptre	F70558	TR 8
Sceptre	F70568	TR 18	Sceptre	F67580	TR 80
Sceptre	F70569	TR 19	Sceptre	F67581	TR 81
Sceptre	F70570	TR 20	Sceptre	F67582	TR 82
Sceptre	F70571	TR 21	Sceptre	F67583	TR 83
Sceptre	F70578	TR 28	Sceptre	F67584	TR 84
Sceptre	F70579	TR 29	Sceptre	F67585	TR 85
Sceptre	F70580	TR 30	Sceptre	F67586	TR 86
Sceptre	F70581	TR 31	Sceptre	F67587	TR 87
Sceptre	F70582	TR 32	Sceptre	F67588	TR 88
Sceptre	F70583	TR 33	Sceptre	F67589	TR 89
Sceptre	F70554	TR 4	Sceptre	F70559	TR 9
Sceptre	F70590	TR 40	Sceptre	F67590	TR 90
Sceptre	F70591	TR 41	Sceptre	F67561	TR 91
Sceptre	F70592	TR 42	Sceptre	F67222	TR 92
Sceptre	F70593	TR 43	Sceptre	F67223	TR 93
Sceptre	F70594	TR 44	Sceptre	F70551	TR 1

Mineral Claims - Land Use Area
Land Use License N2002J0019

Property Name	Claim Number	Claim Name		Property Name	Claim Number	Claim Name
Sceptre	F70560	TR 10		Diva	F24889	TLP 36
Sceptre	F70562	TR 12		Diva	F24890	TLP 37
Tiara	F70606	TR 56		Diva	F24891	TLP 38
Tiara	F70607	TR 57		Aqua	F74331	TL 1
Tiara	F70610	TR 60		Aqua	F74332	TL 2
Tiara	F70611	TR 61		Aqua	F74333	TL 3
Tiara	F70612	TR 62		Aqua	F74334	TL 4
Tiara	F70613	TR 63		Aqua	F74335	TL 5
Tiara	F70616	TR 66		Aqua	F74336	TL 6
Tiara	F70617	TR 67		Aqua	F74337	TL 7
Tiara	F70618	TR 68		Aqua	F74339	TL 9
Tiara	F66679	TR 69		Aqua	F74340	TL 10
Tiara	F66681	TR 71		Aqua	F74341	TL 11
Tiara	F66682	TR 72		Aqua	F74342	TL 12
Tiara	F66683	TR 73		Aqua	F74343	TL 13
Tiara	F66680	TR 70		Aqua	F74344	TL 14
Tiara	F70615	TR 65		Aqua	F74345	TL 15
Tiara	F70614	TR 64		Aqua	F74346	TL 16
Tiara	F70609	TR 59		Aqua	F74347	TL 17
Tiara	F70608	TR 58		Aqua	F74348	TL 18
Diva	F74283	TLP 1		Aqua	F74349	TL 19
Diva	F74284	TLP 2		Aqua	F74350	TL 20
Diva	F74285	TLP 3		Aqua	F74351	TL 21
Diva	F74286	TLP 4		Aqua	F74357	TL 27
Diva	F74287	TLP 5		Aqua	F74358	TL 28
Diva	F74288	TLP 6		Aqua	F74359	TL 29
Diva	F74289	TLP 7		Aqua	F74360	TL 30
Diva	F74290	TLP 8		Aqua	F74361	TL 31
Diva	F74291	TLP 9		Aqua	F74362	TL 32
Diva	F74292	TLP 10		Aqua	F74363	TL 33
Diva	F74293	TLP 11		Aqua	F74364	TL 34
Diva	F74294	TLP 12		Aqua	F74365	TL 35
Diva	F74295	TLP 13				
Diva	F74296	TLP 14				
Diva	F74297	TLP 15				
Diva	F74298	TLP 16				
Diva	F74299	TLP 17				
Diva	F74300	TLP 18				
Diva	F24872	TLP 19				
Diva	F24873	TLP 20				
Diva	F24874	TLP 21				
Diva	F24875	TLP 22				
Diva	F24876	TLP 23				
Diva	F24877	TLP 24				
Diva	F24878	TLP 25				
Diva	F24879	TLP 26				
Diva	F24880	TLP 27				
Diva	F24881	TLP 28				
Diva	F24882	TLP 29				
Diva	F24883	TLP 30				
Diva	F24884	TLP 31				
Diva	F24885	TLP 32				
Diva	F24886	TLP 33				
Diva	F24887	TLP 34				
Diva	F24888	TLP 35				

APPENDIX “C”

Abandonment and Restoration Photographs



Jubilee Camp 2003 – Camp location with empty fuel drums and samples waiting to be picked up at the dock



Jubilee Camp – Winterized/Storage Mode 2002



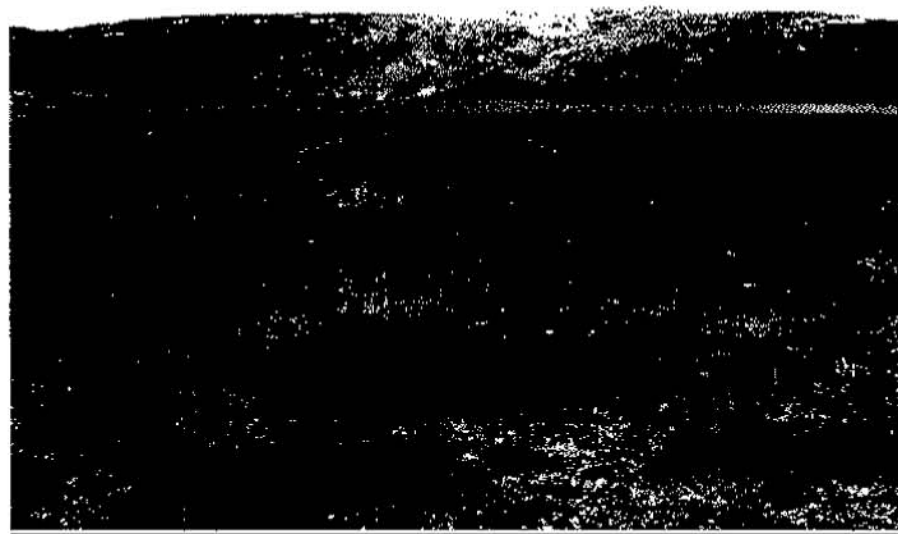
Jubilee Camp – Abandonment and Restoration Completed, September 2008



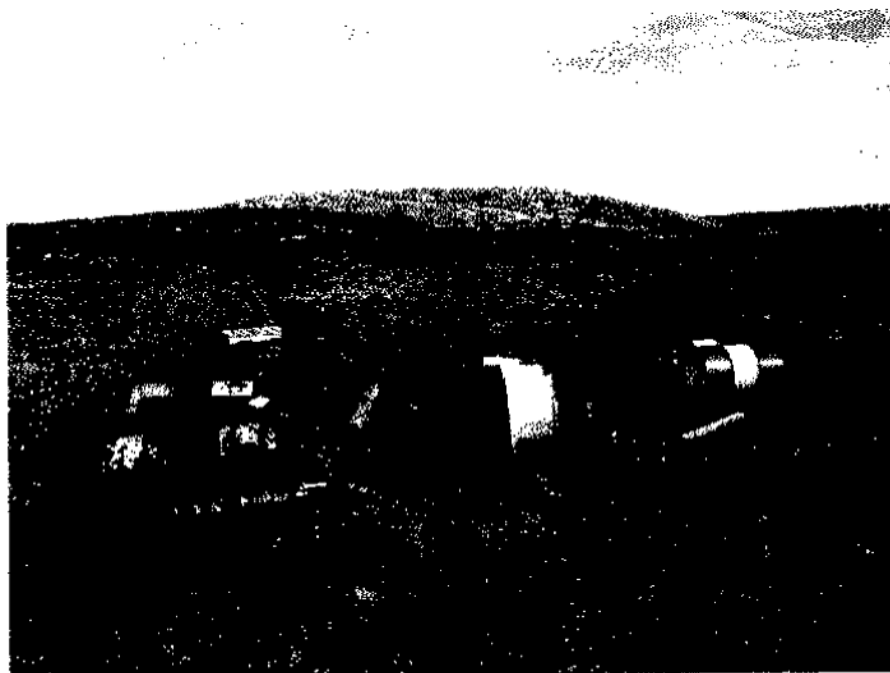
Jubilee Camp – Abandonment and Restoration Completed, September 2008



Jubilee Camp – Abandonment and Restoration Completed, September 2008



Jubilee Camp – Abandonment and Restoration Completed, September 2008



Eureka Camp – Fuel Cache on July 21, 2009