



ANNUAL REPORT

COMMITTEE BAY PROJECT

2011

Distribution:

- ☐ Kitikmeot Inuit Association
- ☐ Indian and Northern Affairs Canada
- ☐ Nunavut Water Board

File: NCG_CBay_2011 Annual Report.doc

Background

North Country Gold Corp. ('NCG') is a publically listed, Canadian based exploration company focussed on the discovery and development of gold resources within the Committee Bay region of Nunavut Territory, Canada. The company was created and listed on the TSX venture exchange in March 2010 as a new entity to facilitate ongoing development of the Committee Bay properties held previously by CBR Gold Corporation and Committee Bay Resources. While North Country Gold appears as a brand new exploration company in Nunavut, the Corporation's principals and management team boast more than 18 years of experience within the Committee Bay region and more than 100 years of combined experience investing and operating in Nunavut.

North Country Gold invested \$27,733,085.70 dollars on exploration in 2011 and via predecessor companies CBR Gold Corporation and Committee Bay Resources, principal's facilitated investment in excess of 47.5 million dollars on the Committee Bay region since 1992.

North Country Gold is committed to expanding and developing its flagship Three Bluffs high grade gold deposit while concurrently advancing regional gold targets and continuing exploration within its Committee Bay properties.

Project Description

The Committee Bay Project currently comprises a land package of 207 mineral claims and 12 mineral leases securing mineral rights to the most prospective portions of the 300 km long gold rich Committee Bay Greenstone belt. The 214,796 hectare property encompasses the Three Bluffs gold deposit, eight advanced gold targets and an additional 28 prospects.

Three Bluffs is located approximately central to the Committee Bay property some 220km south of Kugaaruk, 235km west of Repulse Bay and approximately 300km north east of Agnico Eagle's new Meadowbank Mine. The deposit currently hosts an indicated resource of 508,000 ounces (2,700,000 tonnes at 5.85 g/t Au) and an additional inferred resource of 244,000 ounces (1,270,000 tonnes at 5.98 g/t Au) which has been delineated over nearly 1km of strike and to approximately 100m vertical depth. The deposit remains open at depth. Additionally, geological mapping, the presence of high grade rock samples in sporadic outcrop and regional and ground magnetics suggests that rocks equivalent to Three Bluffs persist south west for up to 16km. This rock package, referred to as the Walker Lake Trend, is considered to have excellent potential to host additional gold resources.

2011 Exploration Program

Exploration activities completed at the Committee Bay project during the 2011 calendar year comprised additional diamond drilling, as well as reverse circulation (RC) drilling over the Three Bluffs gold deposit and the completion of a ground magnetic geophysical survey along the south westerly strike extension, together with concurrent field based prospecting and assessment of the company's regional mineral properties. Work activities were completed throughout the whole season, from April 15 to September 9, and were based out of the company's Hayes Camp.

Three Bluffs Drill Program

2011 saw the largest drilling program in the Committee Bay project to date. A total of 187 holes were drilled for a total of 28,640.01m, of which 92 were NQ2 diamond drill holes for 18,495.95m and 95 were RC holes for 10,148.01m. Drill hole locations are presented in Figures 1 and 2. Significant gold intersections are presented in Tables 1-6.

Drilling focused on resource delineation along the main Walker Lake Trend from Three Bluffs in the west to Hayes in the east. The focus was to drill near existing drillholes which returned high assay results and to add drillholes to expand the current resource. As well, 2 deep (>300m) holes were drilled to test grade at depth and to target plunging down grade shoots. Strong results indicate a down plunge potential which will lead to further investigation and deeper drilling in the 2012 season.

57 holes (55 RC, 2 diamond) were also drilled to the north and south in a series of regional multi-hole fence set ups. This was to test magnetic anomalies to the north and south of the main Walker Lake Trend as well as test stratigraphy. Figures 1 and 2 show the location of such regional drilling indicated by the black drill holes and traces. Three areas of regional drilling have been named. Benz is to the northeast of Three Bluffs, Ledge to the north of Three Bluffs from Benz southwest to Three Bluffs, and Najak, directly south of Three Bluffs. An exploratory fence was also completed in the west of the Hayes prospect.

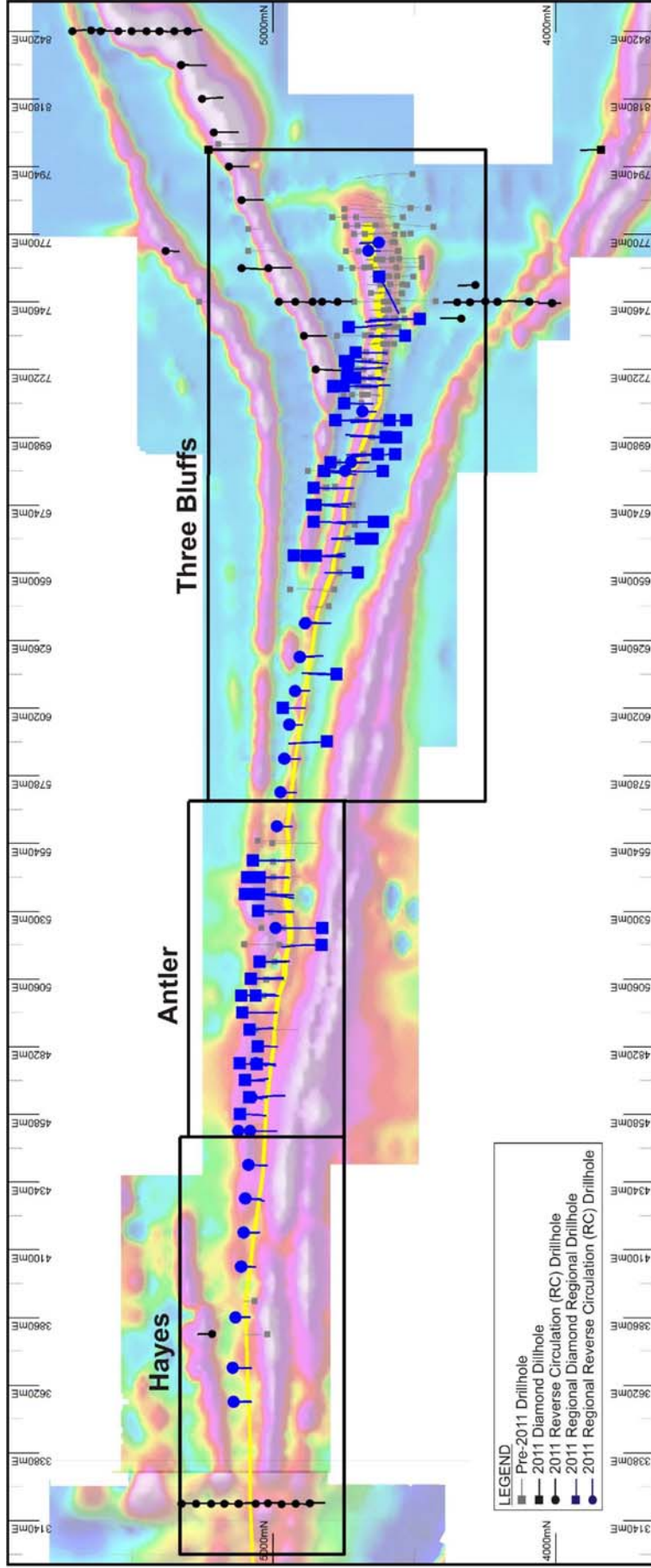


Figure 1

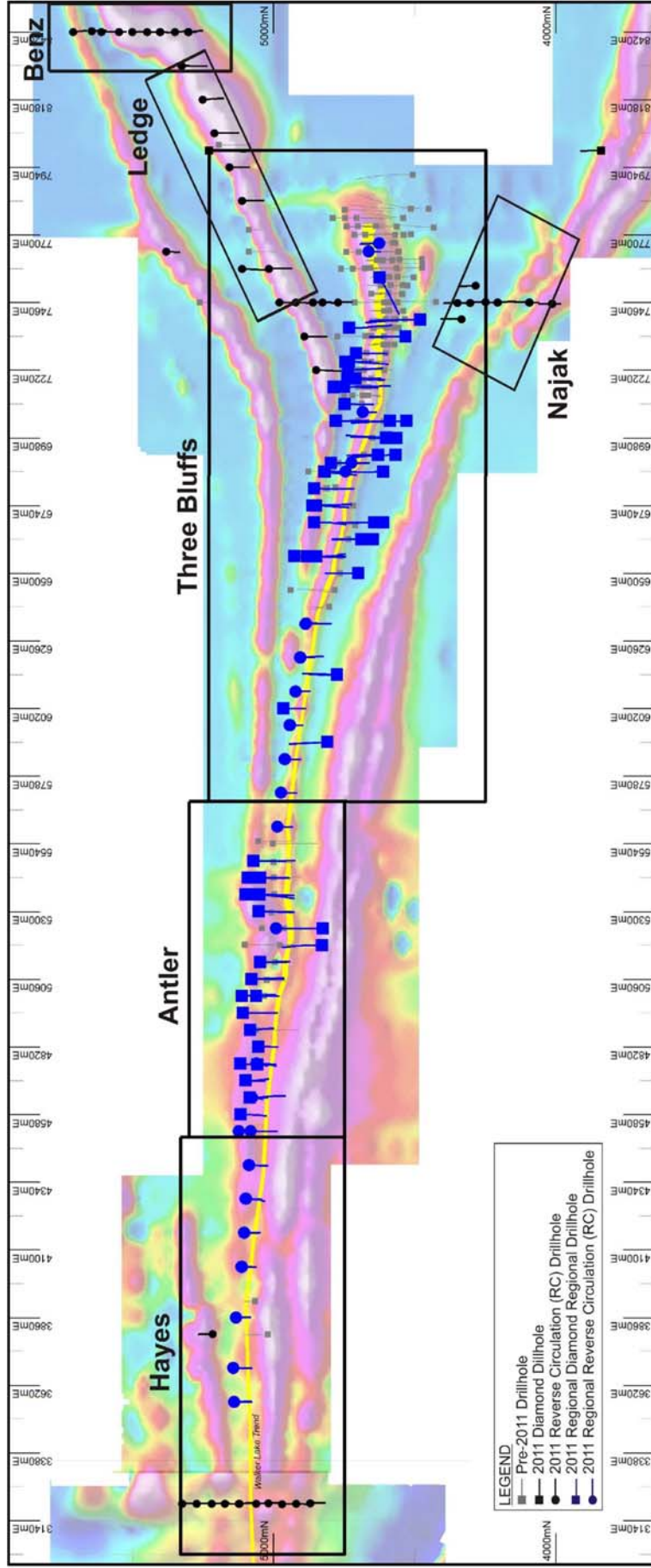


Figure 2

Table 1 – Three Bluffs Hinge Zone Diamond Drill Results

<i>HoleID</i>		<i>From (m)</i>	<i>To (m)</i>	<i>Length (m)</i>	<i>Au (g/t)</i>
11TB101		94.40	149.00	54.60	1.25
	including	145.00	149.00	4.00	7.69
11TB102		112.30	114.00	1.70	1.63
	and	118.00	122.69	4.69	1.39
	and	131.00	137.00	6.00	2.38
	including	131.00	135.00	4.00	3.00
11TB103		147.00	174.00	27.00	2.45
	including	163.00	174.00	11.00	4.62
	or	169.00	173.13	4.13	8.83
11TB104		108.00	133.00	25.00	7.34
	Including	108.00	113.90	5.90	28.71
11TB105		148.00	181.00	33.00	2.31
	including	148.00	157.00	9.00	6.33
	or	152.00	157.00	5.00	9.63
11TB106		123.00	124.00	1.00	1.20
	and	125.00	126.00	1.00	1.24
	and	129.50	136.00	6.50	2.96
	including	131.00	134.00	3.00	4.21
		153.00	169.39	16.39	2.10
	including	162.00	168.00	6.00	2.92
11TB107		169.00	187.00	18.00	2.41
	including	172.00	175.00	3.00	3.42
	and	178.00	182.00	4.00	3.71
	and	186.00	187.00	1.00	7.09
11TB107B		188.00	200.00	12.00	15.00
	including	191.00	196.00	5.00	27.53
	and	221.00	227.00	6.00	2.15
11TB108B		128.00	136.00	8.00	1.19
	and	145.52	156.00	10.48	2.43
	including	149.00	153.00	4.00	3.64
		162.00	163.00	1.00	3.70
11TB0110		85.00	95.00	10.00	2.84
	including	85.00	88.19	3.19	4.82
	and	90.00	91.00	1.00	5.69
	and	94.00	95.00	1.00	5.26
11TB116		130.02	159.00	28.98	0.97
	including	133.00	138.00	5.00	3.09
	and	188.00	212.00	24.00	1.08

	including	199.00	201.00	2.00	4.18
11TB119		129.00	155.80	26.80	0.80
	including	129.00	131.75	2.75	1.89
	and	147.00	149.00	2.00	1.69
		180.94	192.00	11.06	2.74
	including	186.00	190.00	4.00	4.40
11TB120		115.00	116.00	1.00	8.04
	including	124.90	134.00	9.10	1.21
	and	176.00	187.00	11.00	2.22
	including	185.00	187.00	2.00	6.49
11TB122		225.00	243.00	18.00	9.59
	including	226.00	231.00	5.00	30.73
	and	264.00	272.00	8.00	2.79
11TB124		222.00	226.00	4.00	6.65
	and	255.50	257.00	1.50	1.49

Table 2 – Three Bluffs Hinge Zone RC Drill Results

<i>Hole ID</i>		<i>From (m)</i>	<i>To (m)</i>	<i>Length (m)</i>	<i>Au (g/t)</i>
11TBC001		24.37	54.86	30.49	8.06
	including	41.15	51.81	10.66	18.71
11TBC002		7.61	24.37	16.76	2.20
	including	7.61	12.18	4.57	3.79
	and	39.61	42.66	3.05	1.77
11TBC003		22.86	45.72	22.86	1.98
	including	32.00	36.57	4.57	3.33
	and	41.14	45.72	4.58	4.35
	and	57.91	76.19	18.28	1.47
	and	109.72	111.25	1.52	12.20
11TBC004		16.76	30.47	13.71	1.49
	including	16.76	19.81	3.04	3.80
	and	41.14	48.76	7.62	1.22
11TBC005		9.14	13.71	4.57	1.94
	and	21.33	25.90	4.57	1.85

Table 3 – Three Bluffs West Diamond Drill Results

<i>Hole ID</i>		<i>From (m)</i>	<i>To (m)</i>	<i>Length (m)</i>	<i>Au (g/t)</i>
11TW014		170.00	172.00	2.00	2.09
	and	190.00	199.00	9.00	2.92
	including	195.00	199.00	4.00	5.26
11TW015		105.00	109.00	4.00	43.02
	and	126.80	155.00	28.20	2.24
	including	148.00	155.00	7.00	6.07
11TW016		146.00	157.25	11.25	15.00
	including	152.00	157.25	5.25	29.02
11TW017		101.00	110.00	9.00	2.11
	including	105.00	110.00	5.00	2.93
11TW018		170.00	175.00	5.00	1.61
11TW020		150.94	153.00	2.06	1.84
	and	159.00	167.00	8.00	4.85
	including	163.00	167.00	4.00	8.58

Table 4 – Three Bluffs West RC Drill Results

<i>Hole ID</i>		<i>From (m)</i>	<i>To (m)</i>	<i>Length (m)</i>	<i>Au (g/t)</i>
11TWC004		48.77	50.29	1.52	1.93
	and	59.43	62.47	3.04	2.23
11TWC005		108.20	112.77	4.57	1.94
	and	124.96	129.53	4.57	8.67
11TWC008		57.91	59.43	1.52	4.93
11TWC009		88.39	92.96	4.57	2.16
11TWC011		88.39	94.48	6.09	2.44

Table 5 – Antler Gold Discovery Diamond Drill Results

<i>Hole ID</i>		<i>From (m)</i>	<i>To (m)</i>	<i>Length (m)</i>	<i>Au (g/t)</i>
11AN018		157.00	158.00	1.00	1.57
		173.00	175.00	1.00	1.24
		181.00	186.00	5.00	2.37
	including	181.00	184.00	3.00	3.22
11AN019		192.00	193.00	1.00	2.24
	and	196.00	201.69	5.69	1.81
11AN020		157.91	167.39	9.48	7.58

	including	163.80	167.39	3.59	15.38
11AN021C		206.00	214.00	8.00	4.33
	including	210.00	214.00	4.00	5.93
11AN025B		154.00	156.00	2.00	1.49
		160.00	173.00	13.00	3.06
	including	162.00	166.00	4.00	6.48
11AN034		149.00	151.00	2.00	1.37
		155.00	168.36	13.36	2.71
	including	158.00	161.00	3.00	6.83
	and	166.41	168.36	1.95	4.99
11AN041		37.00	50.00	13.00	4.99
	including	38.00	41.00	3.00	9.52
	and	44.79	50.00	5.21	6.12
11AN042		308.00	318.00	10.00	4.35
	including	312.00	315.00	3.00	8.42
	or	312.00	317.00	5.00	6.00

Table 6– Antler Gold Discovery RC Drill Results

<i>Hole ID</i>		<i>From (m)</i>	<i>To (m)</i>	<i>Length (m)</i>	<i>Au (g/t)</i>
11ANC001		65.53	71.62	6.09	1.13
11ANC002		65.53	67.05	1.52	2.35
	and	76.19	77.72	1.52	1.69
11ANC003		25.90	27.43	1.53	1.97
	and	41.14	48.76	7.62	3.89
	including	45.72	48.76	3.04	6.83
11ANC004		27.43	28.95	1.52	2.65
11ANC006		22.86	30.47	7.61	3.63
	including	22.86	25.90	3.04	6.10
11ANC007		48.76	51.81	3.05	5.66

Ground Magnetic Geophysical Survey

A 64.31 line-kilometre ground magnetic geophysical survey was completed between June 1 and June 6, 2011, approximately four kilometres west from the major Three Bluffs deposit. The survey spans across two NCG claims (FWL5 and FWL6) and 1 NCG lease (4910), and there were 39 survey lines and one tie-line completed, see Table 1 and Figure 3

Table 7. 2011 Ground Magnetic Geophysical Survey Summary

Claim / Lease	Line Direction	Line Spacing	Survey Lines (line-km)
Claim FWL 5	NW-SE 331°	60 metres	41.62
	NE-SW 70°	(Tie-line)	3.43
Claim FWL 6	NW-SE 331°	60 metres	12.04
	NE-SW 70°	(Tie-line)	0.76
Lease 4910	NW-SE 331°	60 metres	5.81
	NE-SW 70°	(Tie-line)	0.65
Total			64.31

The ground magnetic geophysical survey covers the strike extension of the Three Bluffs stratigraphy to the west of the main gold deposit. The results indicate linear “magnetic highs” extending the main linear anomaly of the Walker Lake Trend to the west. These magnetic highs are interpreted to represent iron formation stratigraphy, with greywacke and lesser tonalite present in magnetic lows.

Another positive linear anomaly located to the south along the boundary between claims FWL5 and FWL6, could represent another new area of iron formation and possible gold mineralization. Follow up drilling would be recommended.

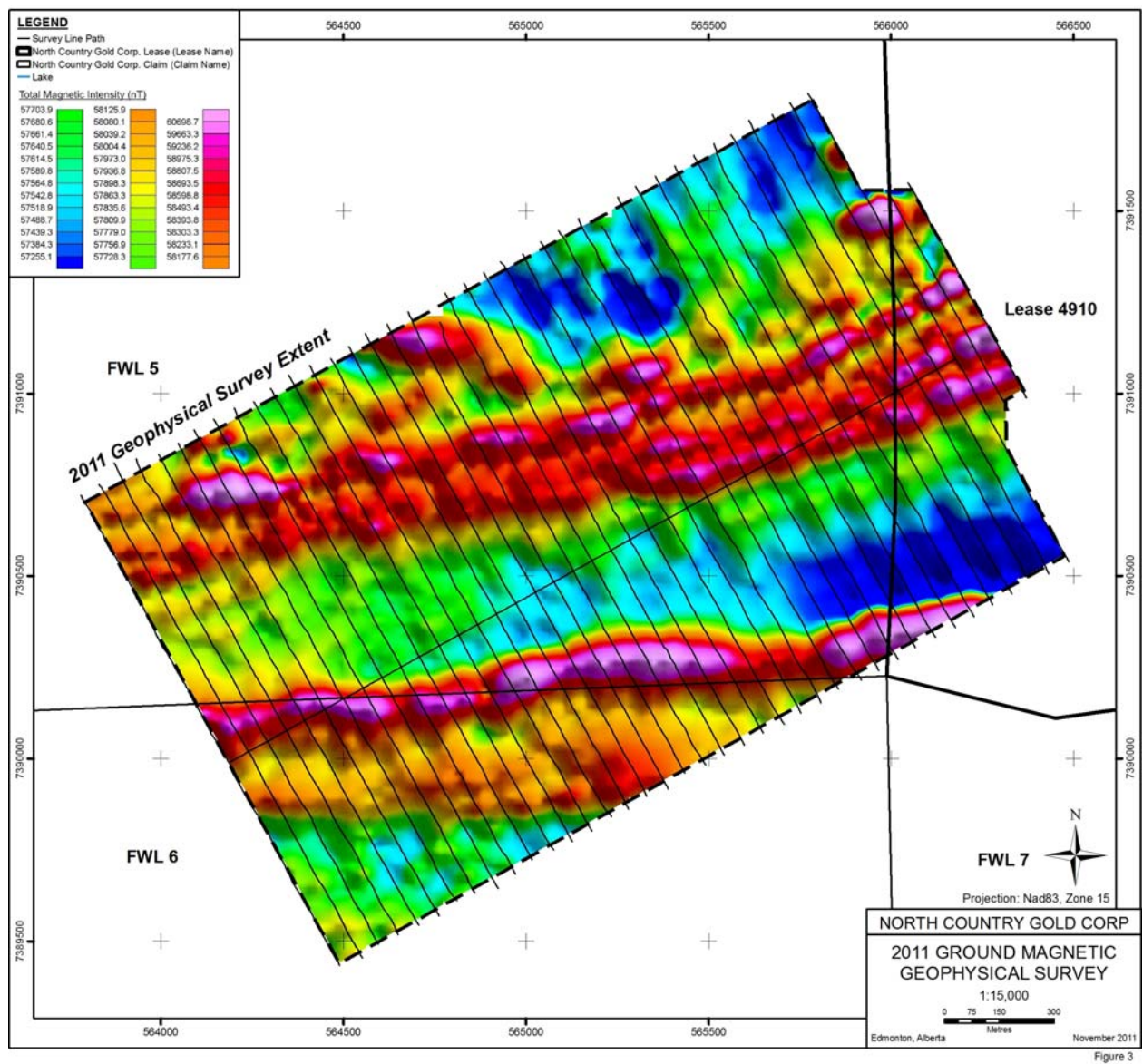


Figure 3. 2011 Ground Magnetic Geophysical Survey Extent

West Plains Drill Program

A small diamond drill program was completed towards the end of the 2011 season (August 25-September 9) at the West Plains prospect in the south west region of the 300km long Committee Bay greenstone belt. Four drill holes were completed for a total of 426.11m. Holes have been positioned to infill existing 2006 holes in an attempt to define the geometry of plunging ore shoots, and examine underlying stratigraphy. Drill hole locations are presented in Figure 4. Assay results are still pending.

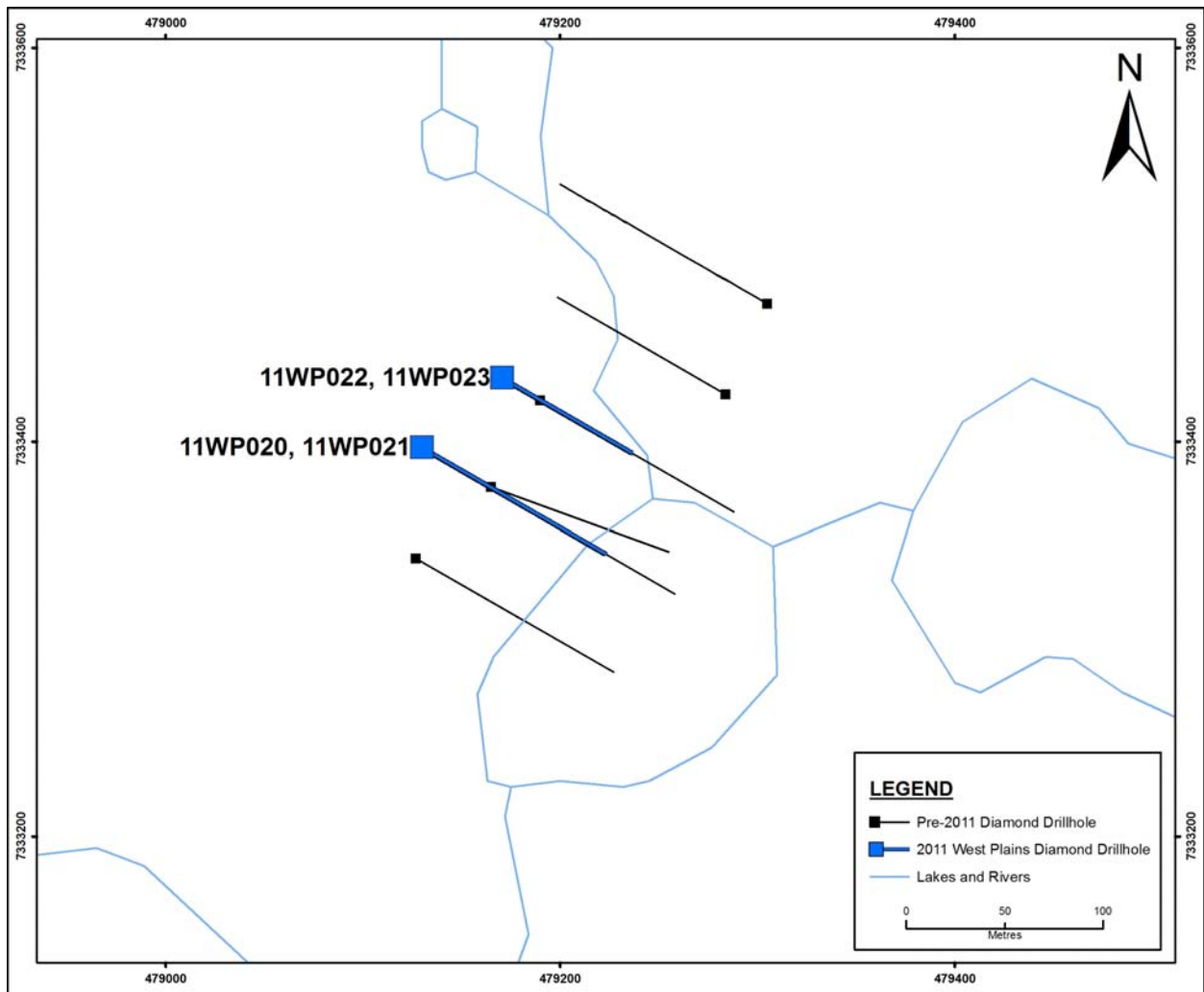


Figure 4

Figure 4. 2011 West Plains drillhole locations

Table 8 – West Plains Drill Results

Hole ID	Grid	Easting	Northing	Azimuth	Dip	Result
11WP020	WP	479178.97	4333398.31	120	-50	<i>Assays Pending</i>
11WP021	WP	479178.77	7333398.43	120	-65	<i>Assays Pending</i>
11WP022	WP	479196.14	7333446.50	120	-45	<i>Assays Pending</i>
11WP023	WP	479196.14	7333446.50	119	-64	<i>Assays Pending</i>

Regional Prospecting and Exploration

A total of 921 rock samples were collected from North Country's Committee Bay regional properties during the 2011 field season. Sampling programs focussed following-up on previous results of interest or to investigate areas away from known gold occurrences that had seen little or no previous ground work, in order to evaluate their potential for hosting economic mineral deposits. As a result, 21 of the 921 rock samples returned assays ≥ 0.5 gAu/t. The following discusses the highlights of the 2011 prospecting program.

Naqsaq – KN6

At the Naqsaq prospect, followup sampling identified further mineralization in boulders and talus (11WBP154 - 8.29gAu/t, 11HEP144 - 7.93gAu/t, 11WBP162 - 2.96 gAu/t, 11SKP144 - 2.31gAu/t, and 11WBP153 - 1.09 gAu/t) The 11 samples collected to date average 4.4 gAu/t and cover a new gold-bearing trend of at least 75m. These anomalous samples correspond with a 1.3km long regional positive magnetic anomaly in conjunction with a 1 km long structural break indicate that Naqsaq is a new discovery area.

Maro – MA1 and SK1

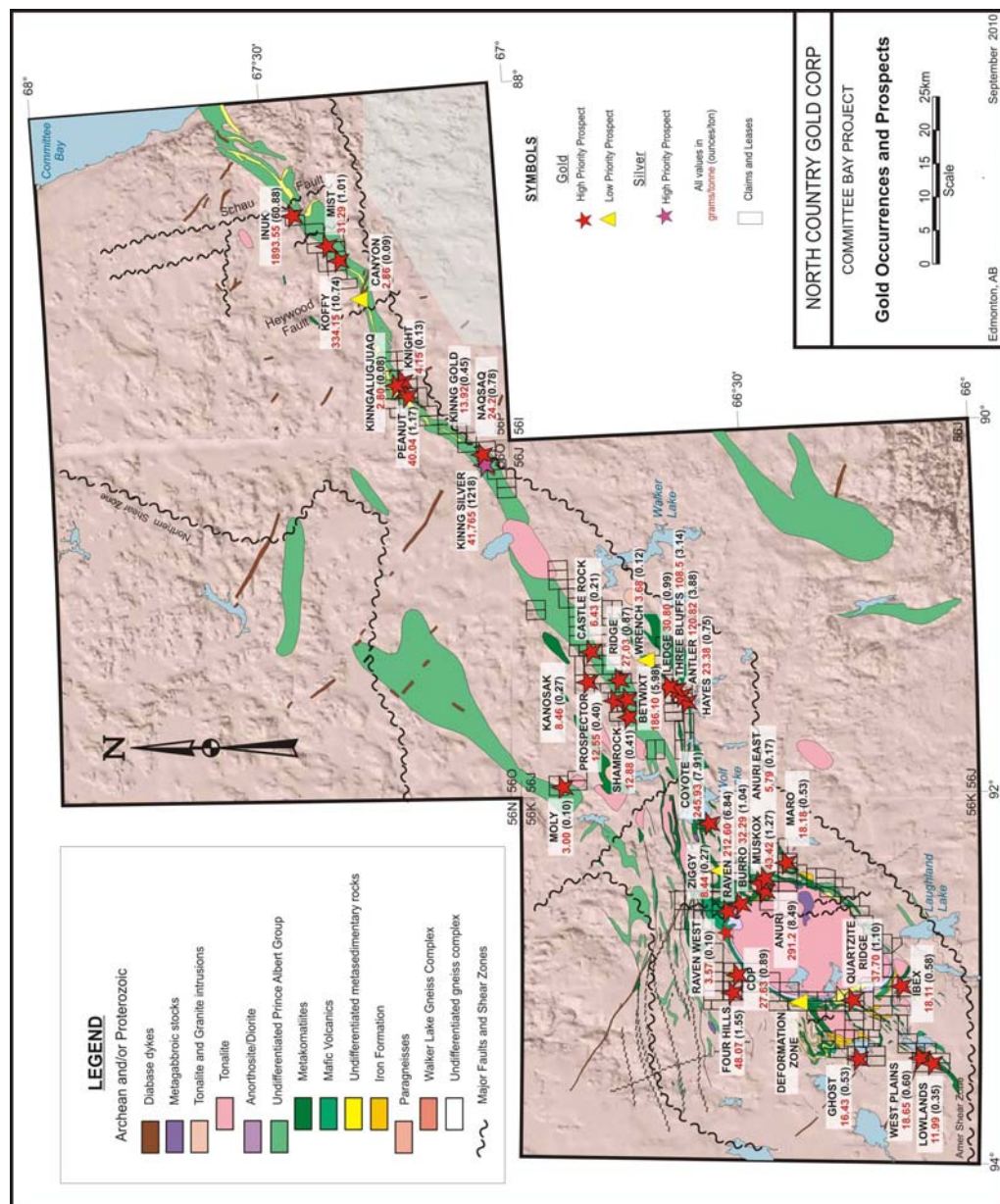
The Maro prospect comprises of two linear glacially transported boulder trains that previously assayed up to 18.18 gAu/t (05RLP061). New 2011 boulder sampling of intensely altered and sulphidized and mafic and ultramafic volcanic rocks has yielded additional assays of 4.47 gAu/t (11GSP195) and 1.53 gAu/t (11WBP200). New mineralised outcrop has been located 2.3 km south of the second boulder train has yielded assays up to 1.19 gAu/t (11SKP206). A strong positive EM and magnetic coinciding with a large regional fold structure suggest that the source of the boulders and the new outcrop is located along a 6km trend that may represent a new large target area.

Cop 9, 11-12

Prospecting in claims COP 9, 11 and 12 located 5km north of the COP and Four Hills prospects located 5 boulder samples of mineralized iron formation (11SKP114 – 3.55 gAu/t, 11SKP117 – 1.78 gAu/t, 11WBP131 – 0.646 gAu/t 11PTP008 – 1.95 gAu/t, 11PTP010 – 3.36 gAu/t). These boulders are interpreted to be sourced at the COP or Four Hills outcrops.

Coyote - FYE1

At the Coyote prospect, followup sampling identified 2 new boulder samples of siliceous iron formation (11WBP051 - 3.24 gAu/t, 11SKP047 – 1.68 gAu/t) located 300m north of the main Coyote outcrop.



Activities

The following table outlines the man-day and locations of activity during the 2011 field season.

Camp Site	Season	Date In	Date Out	Man Days	Activity
Hayes	Spring / Summer	March 7	September 19	10143	Open Camp, build Herc Strip, Mob in drills and fuel for the season, drilling program, infrastructure upgrades, geophysical ground magnetic survey, construction of new buffalo strip
Bullion	Spring				No activity out of Bullion this spring
	Summer	August 25	September 9	152	RC drill program, small crew on site, camp cleanup
Ingot	Spring				No activity out of Ingot Camp this spring
	Summer			5	Minor camp cleanup
Crater	Spring				No activity out of Crater Camp this spring
	Summer			5	Minor camp cleanup

Hayes Camp

Personnel arrived at Hayes Camp on March 7th in order to open camp, build a Hercules airstrip and mobilize drilling equipment and fuel for the 2011 program. The drilling program started on April 15 and was completed on September 9. Camp was shut down September 19th. Twin Otter was utilized to move crew and equipment from to and from Rankin Inlet, and from Hayes Camp to both Bullion Camp and Ingot Camp. Complete inventories of camp equipment were taken and a list of fuels remaining on-site is provided below.

Fuel Inventory	Hayes Camp	Bullion Camp	Ingot Camp	Crater	Baker Lake	Rankin Inlet	Churchill	Yellowknife	IBEX	West Plains	3 Bluffs	Totals
P-50 Diesel	627	52	50	0	44	0	0	0	0	18	100	891
Gasoline	5	1	0	0	0	0	0	0	0	0	2	8
Jet - A	0	0	0	0	0	0	0	0	0	0	0	0
Jet - B	156	21	0	0	266	0	0	0	0	1	0	444
Jet (Contaminated)	124	0	0	0	0	0	0	0	0	0	0	124
Jet (Expired)	0	0	0	0	0	0	0	0	6	4	0	10
Propane	66	9	0	0	50	0	0	0	0	0	0	125
Empty Propane	148	0	0	0	0	0	0	0	0	0	0	148
Empty Diesel drums	400	0	0	0	0	0	0	0	0	0	0	400
Empty Jet fuel drums	100	0	0	0	0	0	0	0	8	0	0	108
Crushed Drums	2520	0	0	0	0	0	0	0	2	0	0	2522
Drums of Garbage	211	0	0	0	0	0	0	0	0	0	0	211
Contaminated (Fuel)	89	0	0	0	0	0	0	0	0	0	0	89
Contaminated (Soil)	10	0	0	0	0	0	0	0	0	0	0	10
Contaminated (Water)	62	0	0	0	0	0	0	0	0	0	0	62
Used Oil	8	0	0	0	0	0	0	0	0	0	0	8
Recycled Jet-B	36	0	0	0	0	0	0	0	0	0	0	36
Recycled P-50	44	0	0	0	0	0	0	0	0	0	0	44
Recycled Gas	2	0	0	0	0	0	0	0	0	0	0	2
Core Boxes	3275	105	0	0	0	0	0	0	0	235	0	3615
Core Box Lids	0	15	0	0	0	0	0	0	0	20	0	35
Salt	180	0	0	0	0	0	0	100	0	43	0	323

All empty crushed drums, contaminated waste and garbage will be removed from site via Hercules heavy lift aircraft during the 2012 spring program.

2011 Environmental Program

All exploration activities were conducted out of the Hayes and Bullion Camps during the 2011 exploration season. North Country Gold Corp. adhered to all regulations concerning water and environmental issues and ensured that contractors and sub-contractors were also in compliance.

Hayes camp was occupied by a maximum of 89 people during the height of the 2011 program and daily water usage for camp was monitored and documented up to 9 cubic meters per each given day. Water was pumped from nearby lakes into covered, plastic receptacles from which water for cooking, drinking, and washing was drawn. New wash cars, a new kitchen unit and waste water treatment plant were installed at Hayes Camp during the summer and were fully operational by mid August. A small amount of chlorine (1 teaspoon) was added to the camp drinking water to eliminate the presence of chloroform bacteria in the potable water. No bacteria presence was detected and no cases of nausea or diarrhoea were reported to the first aid attendants. An ultra violet water purification system was utilised at Hayes Camp as an added protection against possible impurities to the main drinking water for the camp. Grey water from the kitchen and washing facilities was routed by ABS piping to sumps which were located at least 30m away from the high water level of nearby lakes. The sumps were monitored and bermed to ensure they did not overflow. Once the waste water treatment plant was operational, the plant treated all grey water and sewage.

During the spring season, a new drill water supply system (DWSS) was installed at the Three Bluffs drillsite. The DWSS consists of a heat traced and insulated pipe that carries water from a Hayes River pond to a main water tank where it is heated and pumped to two additional satellite water storage tanks. Water for diamond drilling was then drawn from one of the three storage tanks. The 5 diamond drills onsite, used up to 180 cubic meters of water any given day (refer to Appendix 1).

Fuels stored on site included propane, Jet B, gasoline and diesel. The latter three were cached in the same vicinity and are differentiated by distinct barrel colors. Fuel barrels were stored on their side with the bungs horizontal and checked daily for leakage. When necessary, fuel was pumped via a wobble pump into 20-25 litre gas cans for the fueling of snow machines, an all terrain vehicle and small gas generators. Fuel Containment Berms and absorbent padding was used to catch drips when fuel was being moved. Spill kits containing absorbent matting, safety gloves and goggles, plastic bags, absorbent peat and containment socks were stationed at the fuel cache, the main generator, the helicopter pad and the drill. 2 35,000 litre double walled fuel tanks were installed at the Hayes camp fuel cache during the summer for use in the 2012 season. This will reduce the requirement for drummed fuel.

2011 Employees and Firms

Most directly employed personnel (geologists, helicopter pilots and engineers) for the 2010 exploration program were hired in-house or through our consultancy APEX Geoscience Ltd. of Edmonton. A total of 26 Inuit staff was hired in the 2011 season, from Repulse Bay and Gjoa Haven to perform camp and camp management duties. All transportation and training was supplied by North Country Gold Corp. A total of \$330,000.00 was spent on Inuit salaries and wages in the 2011 season. Community consultations in 2011 were forced to be cancelled due to weather.

Of the \$28 M spent on the 2011 exploration program, approximately \$10,400,000 was spent in the north and \$6,900,000 of that was spent with Inuit owned suppliers. Significant Inuit and Northern suppliers include:

- M+T Enterprises (Rankin Inlet)
- Medics North Nunavut
- Canadian North
- Great Slave Helicopters
- Unaalik Aviation (Rankin Inlet)
- Toromont Arctic (Rankin Inlet)
- The Northern Store (Rankin Inlet)
- Umingmak (Rankin Inlet)
- Siniktarvik Hotel (Rankin Inlet)
- Nanuq Lodge (Rankin Inlet)
- First Air
- Nunavut Sealink and Supply

It is expected that the 2012 exploration program in the North Country Gold Corp project will have a budget in excess of \$20 M. This budget allowance will enable us to continue to hire local Inuit crew members and conduct community consultations prior to the field season, in addition to further spending in the northern regions (see following list).

North Country Gold Corp. provides both on the job training and certificate based training to all its hired Inuit personnel. On the job training consists of instruction directly related to the type of work that the person is employed for. Some examples include Helicopter safety, camp assistant and camp manager positions, core cutting/splitting, loading and off-loading of various aircrafts, heavy equipment operators, drill helpers, water treatment plant and incinerator operators, carpenters, mechanics. Certificate based training may consist of onsite First Aid training and WSCC supervisors training and possible field related opportunities, such as surveying and sampling. North Country Gold Corp. has also covered costs of conducting elders and family tours to the camps and drilling locations as part of community relations.

Northern Businesses

Aurora Northern Contractors

Weaver & Devore Trading Ltd.

Great Slave Helicopters

Discovery Mining Services

Northern Communications

Gardewine North

Northern Store, Rankin Inlet

Ron's Auto

Canadian North Airlines

Nickel City Motors

Summit Air

Northern Communications

Northwest Telecommunications

Arctic Tracks

Inuit Owned Businesses

First Air

Calm Air

Medics North Nunavut

Kissarvik CO-OP Ltd.

M&T Enterprise Ltd.

Northern Logistics

Toromont Arctic

J&D Catworks

Unaalik Aviation

Ookpik Aviation Inc.

Nunavut Sealink and Supply

Sakku Drugs Ltd.

Inns North

Toromont Industries

Siniktarvik Hotel and Conference Centre

Umingmak Supply Ltd.

The Nanuq Lodge

APPENDIX 1
North Country Gold Corp
Water usage for the 2011 season

		March																														
	Totals (M³)	1	2	3	4	5	6	7	8	9	10	11	12	13	14	15	16	17	18	19	20	21	22	23	24	25	26	27	28	29	30	31
Camps																																
Hayes Camp	28.30	0	0	0	0	0	0	0.5	0.8	0.7	0.8	0.9	0.8	0.8	1	0.8	1.3	0.7	0.5	0.8	0.7	0.8	0.9	0.5	0.5	1	2.1	1.7	2.2	2.1	3.2	2.2
Crater Camp	0.00																															
Bullion Camp	0.00																															
Ingot Camp	0.00																															
Drill Rigs																																
3 Bluffs	0.00																															
West Plains	0.00																															
Total For 2011 Season	21564.00																															
	Total Gallions/ Day																															
	Total M³/ Day	0	0	0	0	0	0	0.5	0.8	0.7	0.8	0.9	0.8	0.8	1	0.8	1.3	0.7	0.5	0.8	0.7	0.8	0.9	0.5	0.5	1	2.1	1.7	2.2	2.1	3.2	2.2

		April																													
	Totals (M³)	1	2	3	4	5	6	7	8	9	10	11	12	13	14	15	16	17	18	19	20	21	22	23	24	25	26	27	28	29	30
Camps																															
Hayes Camp	84.00	1.9	1.6	3	2.5	2.6	3.2	2.4	3.7	2.4	2.8	2.6	2.7	2.6	2.8	3.3	2.9	2.8	2.6	3.1	4	2.7	2.8	2.8	2.6	2.5	2.5	3.3	3.1	4.3	2.7
Crater Camp	0.00																														
Bullion Camp	0.00																														
Ingot Camp	0.00																														
Drill Rigs																															
3 Bluffs	1114.00														30	48	48	48	60	60	60	60	70	70	70	80	80	80	80	80	90
West Plains	0.00																														
Total For 2011 Season	21564.00																														
	Total Gallons/ Day																														
	Total M³/ Day	1.9	1.6	3	2.5	2.6	3.2	2.4	3.7	2.4	2.8	2.6	2.7	2.6	32.8	51.3	50.9	50.8	62.6	63.1	64	62.7	72.8	72.8	72.6	82.5	82.5	83.3	83.1	84.3	92.7

		May																															
	Totals (M³)	1	2	3	4	5	6	7	8	9	10	11	12	13	14	15	16	17	18	19	20	21	22	23	24	25	26	27	28	29	30	31	
Camps																																	
Hayes Camp	111.40	2.4	2.5	4	3	3.4	4.7	4.8	3.5	3.7	3.5	2.9	2.9	3.6	3.5	3.5	3.5	3.5	4	3.5	3.5	3.5	3.5	3.5	4	3.5	3.5	3.5	5	3.5	4.5		
Crater Camp	0.00																																
Bullion Camp																																	
Ingot Camp	0.00																																
Drill Rigs																																	
3 Bluffs	4564.00	90	90	90	90	90	90	120	120	152	160	172	165	165	165	165	165	165	165	165	165	165	165	165	165	165	165	165	165	165	165	165	
West Plains	0.00																																
Total For 2011 Season	21564.00																																
	Total Gallons/ Day																																
	Total M³/Day	92.4	92.5	94	93	93.4	94.7	124.8	123.5	155.7	163.5	174.9	167.9	168.6	168.5	168.5	168.5	168.5	169	168.5	168.5	168.5	168.5	168.5	169	168.5	168.5	168.5	170	168.5	169.5		

[illegible]

		July																															
	Totals (M ³)	1	2	3	4	5	6	7	8	9	10	11	12	13	14	15	16	17	18	19	20	21	22	23	24	25	26	27	28	29	30	31	
Camps																																	
Hayes Camp	199.00	8	8	8	8	8	8	8	8	7	7	7	6	5	5	5	5	5	5	5	5	5	5	5	5	5	5	6	7	7	7	8	8
Crater Camp	0.00																																
Bullion Camp	0.00																																
Ingot Camp	0.00																																
Drill Rigs																																	
3 Bluffs	3325.00	165	165	165	165	165	165	165	165	165	165	165	70	70	70	70	70	70	70	70	70	70	70	70	70	70	70	70	70	70	70	180	
West Plains	0.00																																
Total For 2011 Season	21564.00																																
	Total Gallons/ Day																																
	Total M ³ / Day	173	173	173	173	173	173	173	173	172	172	172	76	75	75	75	75	75	75	75	75	75	75	75	75	75	76	77	77	77	78	188	

		August																															
	Totals (M³)	1	2	3	4	5	6	7	8	9	10	11	12	13	14	15	16	17	18	19	20	21	22	23	24	25	26	27	28	29	30	31	
Camps																																	
Hayes Camp	259.00	8	9	9	9	9	9	9	9	9	9	9	9	9	9	9	9	9	9	9	9	9	9	9	9	9	9	7	6	5	4	4	
Crater Camp	0.00																																
Bullion Camp	7.50																								0.5	0.5	0.5	1	1	1	1	1	1
Ingot Camp	0.00																																
Drill Rigs																																	
3 Bluffs	5580.00	180	180	180	180	180	180	180	180	180	180	180	180	180	180	180	180	180	180	180	180	180	180	180	180	180	180	180	180	180	180	180	
West Plains	245.00																																
Total For 2011 Season	21564.00																																
	Total Gallons/ Day																																
	Total M³/ Day	188	189	189	189	189	189	189	189	189	189	189	189	189	189	189	189	189	189	189	189	189	189	189	189.5	189.5	224.5	225	223	222	221	220	220

		September																														
	Totals (M³)	1	2	3	4	5	6	7	8	9	10	11	12	13	14	15	16	17	18	19	20	21	22	23	24	25	26	27	28	29	30	31
Camps																																
Hayes Camp	259.00	8	9	9	9	9	9	9	9	9	9	9	9	9	9	9	9	9	9	9	9	9	9	9	9	9	9	9	9	9	9	
Crater Camp	0.00																															
Bullion Camp	8.00	1	1	1	1	1	1	1	0.5	0.5																						
Ingot Camp	0.00																															
Drill Rigs																																
3 Bluffs	5580.00	180	180	180	180	180	180	180	180	180	180	180	180	180	180	180	180	180	180	180	180	180	180	180	180	180	180	180	180	180	180	180
West Plains	315.00	35	35	35	35	35	35	35	35	35																						
Total For 2011 Season	21564.00																															
	Total Gallons/ Day																															
	Total M³/ Day	224	225	225	225	225	225	225	224.5	224.5	189	189	189	189	189	189	189	189	189	189	189	189	189	189	189	189	189	187	186	185	184	184